

V&V Reference Report

L2 ASCDS Version : 8.4.5

Observation 13287 - L2 Version 1
Chandra X-Ray Center

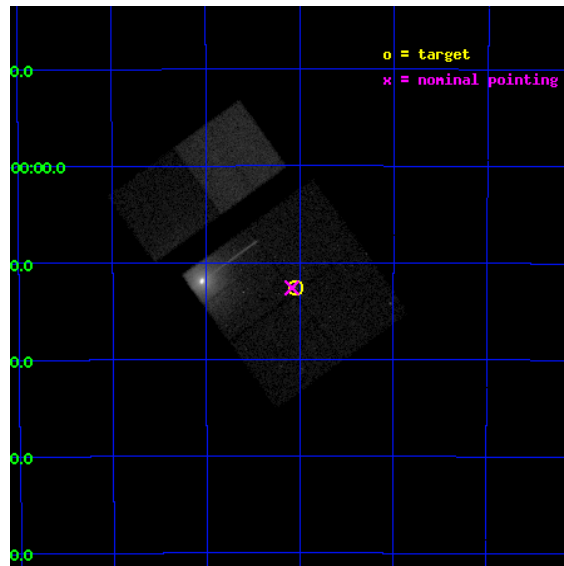
L2 Processing Date : Jun 17 2012

Contents

1	Front	2
2	OBI	3
2.1	OBI	3
2.1.1	Images	3
2.1.2	Bias	3
2.1.3	Parameters	4
2.1.4	Events	4
2.2	Compared Parameters	5
2.3	Aspect	6
2.4	Star Slots	9
2.4.1	Slot 3	9
2.4.2	Slot 4	10
2.4.3	Slot 5	11
2.4.4	Slot 6	12
2.4.5	Slot 7	13
2.5	FID Slots	14
2.5.1	Slot 0	14
2.5.2	Slot 1	15
2.5.3	Slot 2	16
A	Summary	17
A.1	Status	17
A.2	Comments	17

1 Front

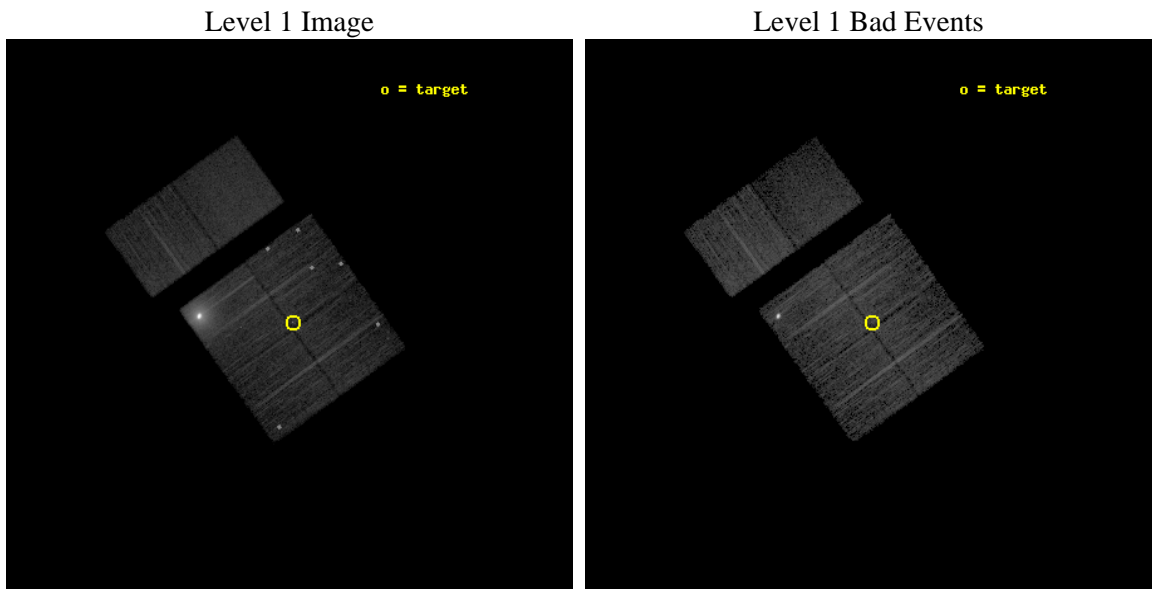
seq_num	501555	Sequence number
obs_id	13287	Observation id
title	Snap-shot survey of new galactic gamma-ray sources	Proposal title
observer	Professor Gordon Garmire	Principal investigator
object	HESS J1626-490	Source name
dtcycle	0	
cycle	P	events from which exps? Prim/Second/Both
ra_targ	246.7625	Observer's specified target RA [deg]
dec_targ	-49.209083	Observer's specified target Dec [deg]
ra_nom	246.77116371682	Nominal RA [deg]
dec_nom	-49.210175263948	Nominal Dec [deg]
roll_nom	324.23372999915	Nominal Roll [deg]
revision	1	Processing version of data
ontime	10166.399962187	Sum of GTIs [s]
livetime	10037.666884394	Livetime [s]
ontime0	10166.399962187	Sum of GTIs [s]
ontime1	10166.399962187	Sum of GTIs [s]
ontime2	10166.399962187	Sum of GTIs [s]
ontime3	10166.399962187	Sum of GTIs [s]
ontime6	10166.399962187	Sum of GTIs [s]
ontime7	10166.399962187	Sum of GTIs [s]
l2events	249320	Number of level 2 events



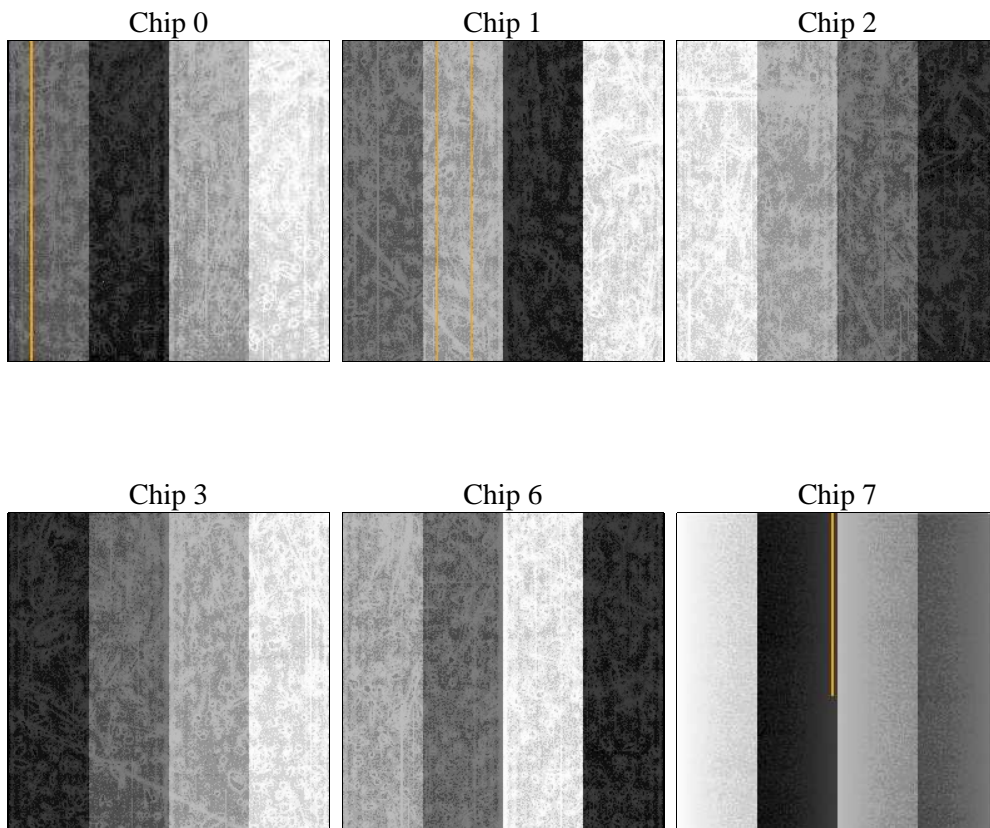
2 OBI

2.1 OBI

2.1.1 Images



2.1.2 Bias



2.1.3 Parameters

obi_num	0	Obi number	sched_exp_time	10199.346000	[s] Scheduled observation exposure time
ascdsver	8.4.5	Processing system revision	ontime	10166.399962187	Sum of GTIs [s]
caldsver	4.4.10	 	ontime0	10166.399962187	Sum of GTIs [s]
date	2012-06-17T13:43:11	Date and time of file creation	ontime1	10166.399962187	Sum of GTIs [s]
revision	1	Processing version of data	ontime2	10166.399962187	Sum of GTIs [s]
			ontime3	10166.399962187	Sum of GTIs [s]
			ontime6	10166.399962187	Sum of GTIs [s]
			ontime7	10166.399962187	Sum of GTIs [s]
			l1events	602905	Number of level 1 events

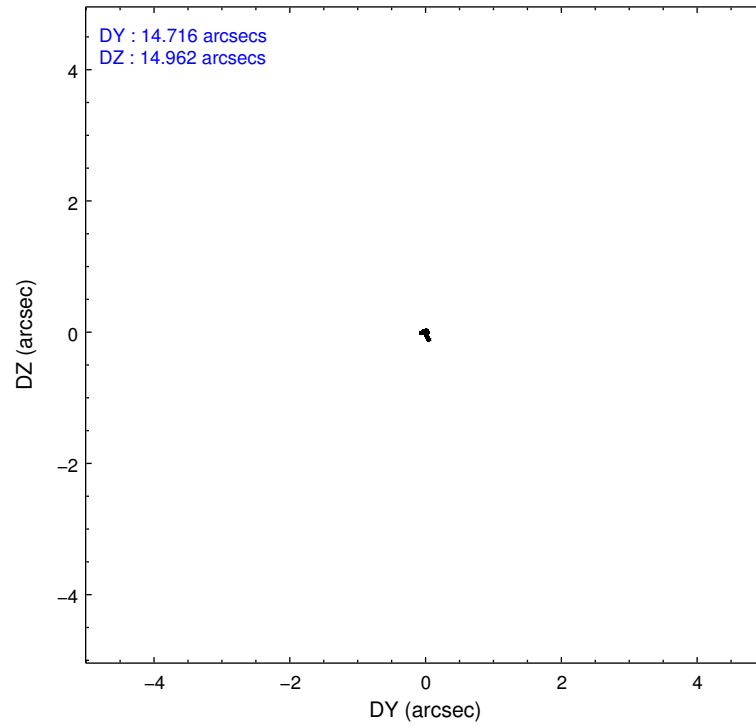
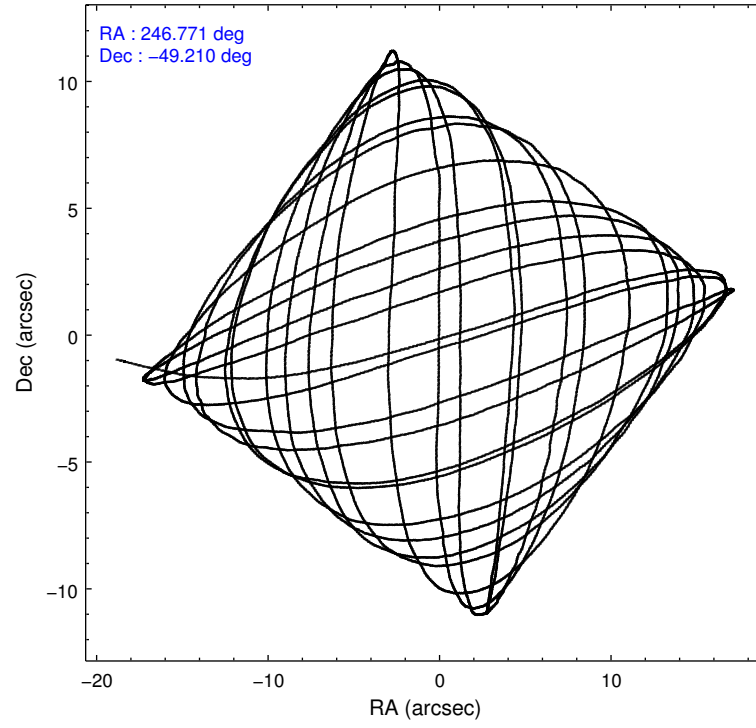
2.1.4 Events

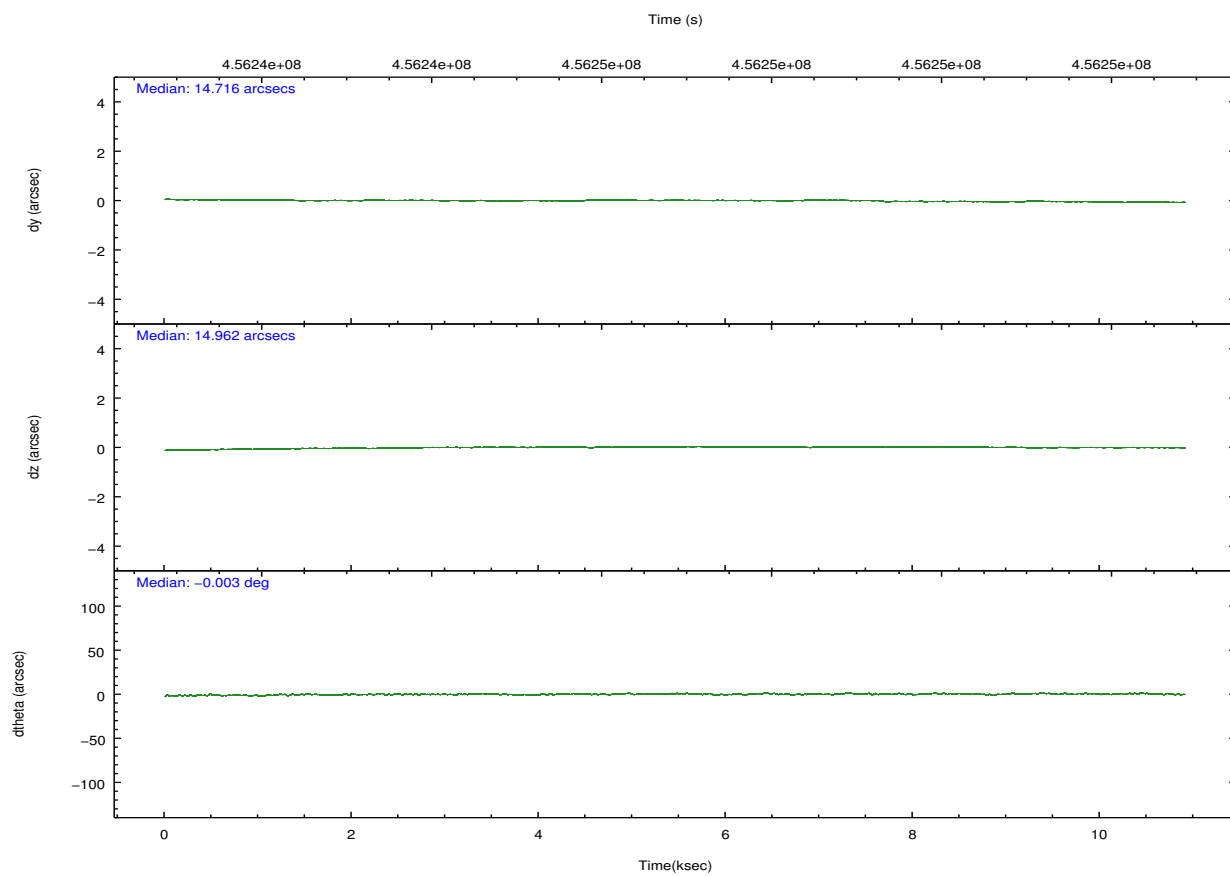
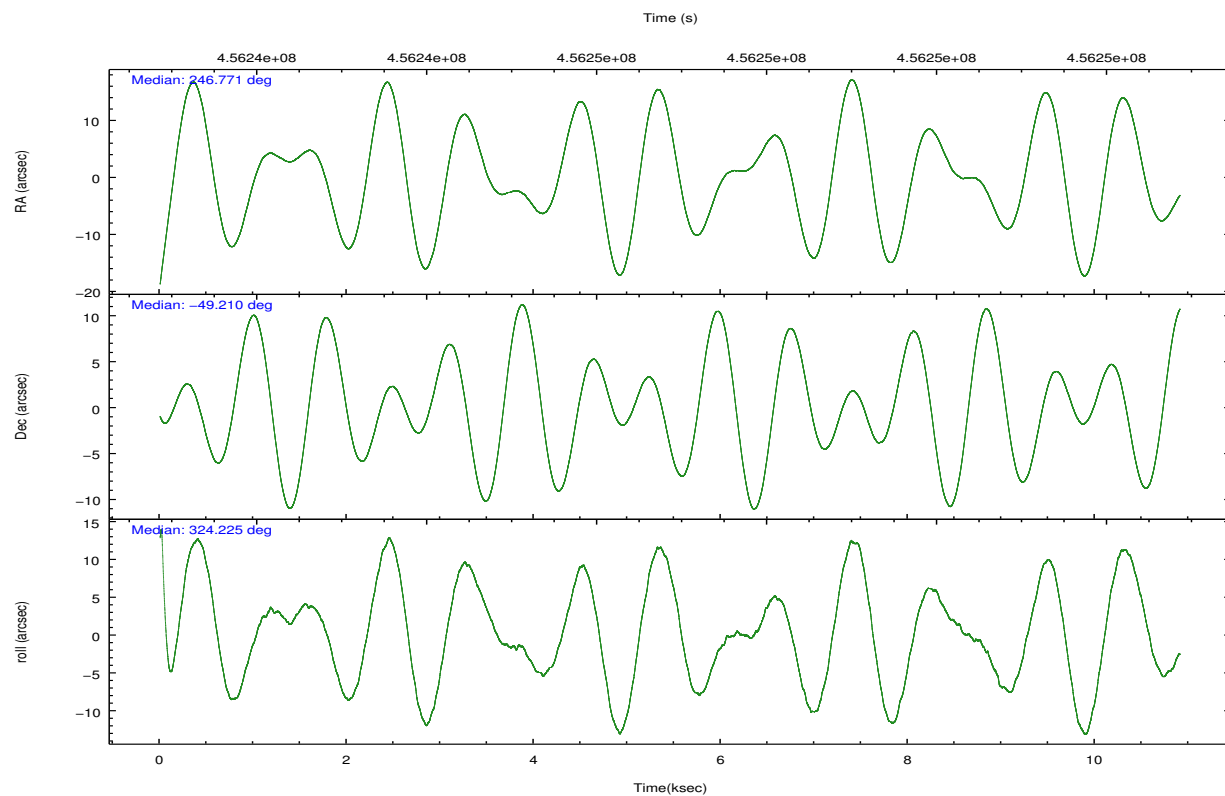
	ccd 0	ccd 1	ccd 2	ccd 3	ccd 6	ccd 7		ccd 0	ccd 1	ccd 2	ccd 3	ccd 6	ccd 7
level 1 events	58069	58233	285993	71533	63318	65759	grade 0 events	6975	6390	121567	15886	4969	3322
rejected events	46406	47156	83386	51178	53188	33499		12%	10%	42%	22%	7%	5%
rejected %	79%	80%	29%	71%	84%	50%	grade 1 events	43	37	10667	103	47	110
								0%	0%	3%	0%	0%	0%
							grade 2 events	2003	1759	33659	1685	2079	7156
								3%	3%	11%	2%	3%	10%
							grade 3 events	730	743	12829	772	755	2950
								1%	1%	4%	1%	1%	4%
							grade 4 events	717	731	12889	708	759	2854
								1%	1%	4%	0%	1%	4%
							grade 5 events	2093	2245	10681	2363	2503	6832
								3%	3%	3%	3%	3%	10%
							grade 6 events	1242	1456	21725	1309	1574	15987
								2%	2%	7%	1%	2%	24%
							grade 7 events	44266	44872	61976	48707	50632	26548
								76%	77%	21%	68%	79%	40%

2.2 Compared Parameters

Parameter	Planned	Actual	Parameter	Planned	Actual
Instrument	ACIS	ACIS	Obspar format version number	7	7
Detector	ACIS-012367	ACIS-012367	Obspar file type	PREDICTED	ACTUAL
Grating	NONE	NONE	Obspar update status	NONE	UPDATED
Data mode	FAINT	FAINT	CCD I0 on	Y	Y
Observation mode	POINTING	POINTING	CCD I1 on	Y	Y
[deg] Pointing RA	246.729247	246.7711637168215	CCD I2 on	Y	Y
[deg] Pointing Dec	-49.207518	-49.21017526394819	CCD I3 on	Y	Y
[deg] Pointing Roll	323.993269	324.233729999148	CCD S0 on	N	N
[mm] SIM focus pos	-0.782348	-0.7809083437167272	CCD S1 on	N	N
[mm] SIM defocus	0	0.001439871863259334	CCD S2 on	O2	Y
[mm] SIM translation stage pos	-233.592463	-233.5874344608287	CCD S3 on	O1	Y
[mm] SIM translation stage offset	0	-0.005018542100998502	CCD S4 on	N	N
[s] Observation start time (MET)	456242126.184000	456240902.73483	CCD S5 on	N	N
Observation start date	2012-06-16T13:54:20	2012-06-16T13:35:02	Number of optional ACIS chips dropped	0	0
[s] Observation end time (MET)	456252325.184000	456252562.11045	On-chip summing requested	N	N
Observation end date	2012-06-16T16:44:19	2012-06-16T16:49:22	Subarray requested	NONE	NONE
Read mode	TIMED	TIMED	Alternating exposures requested	N	N
			[s] Primary exposure time	0.000000	3.2

2.3 Aspect



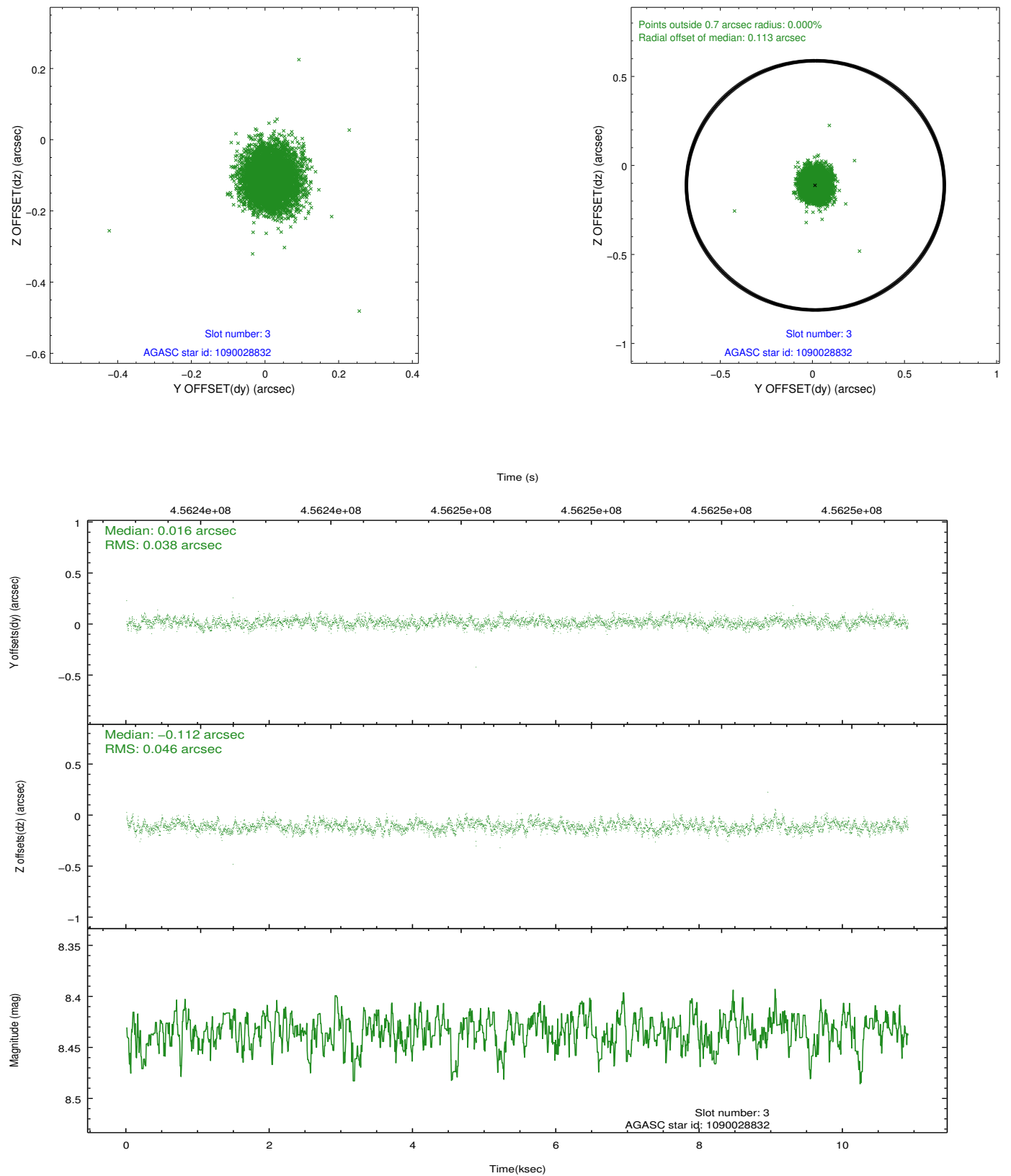


Slot Statistics

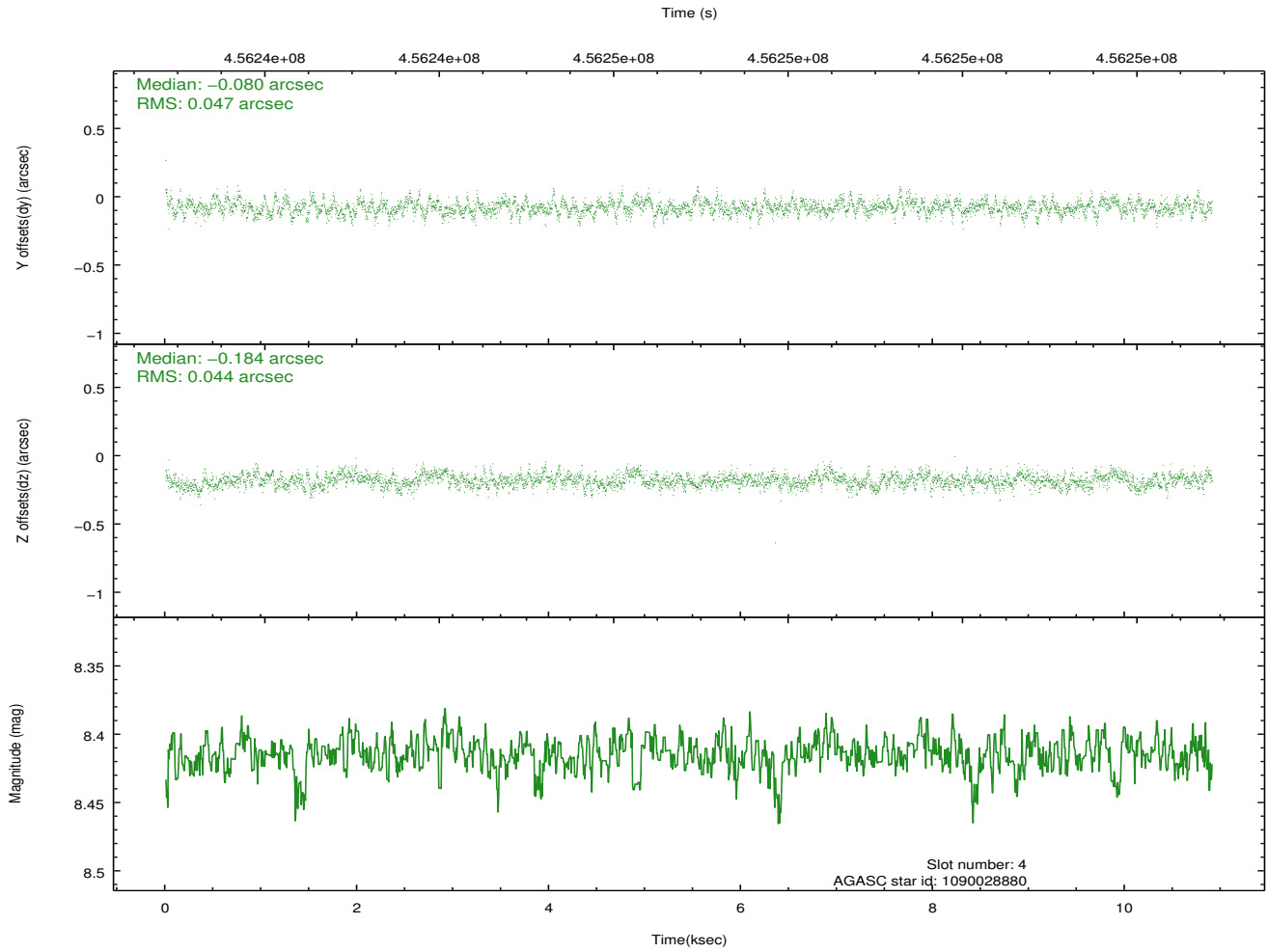
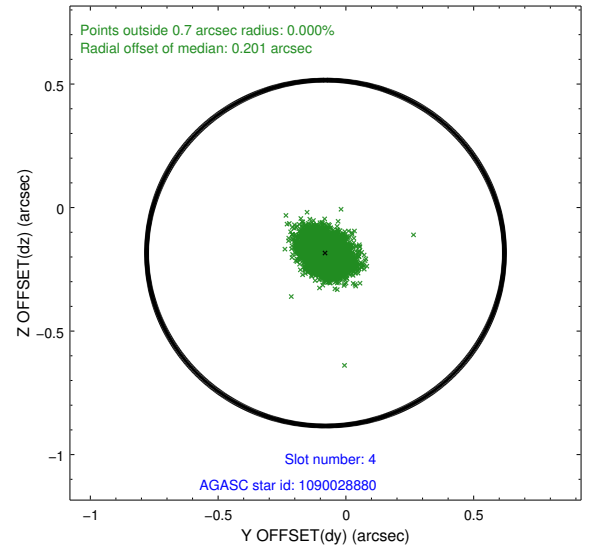
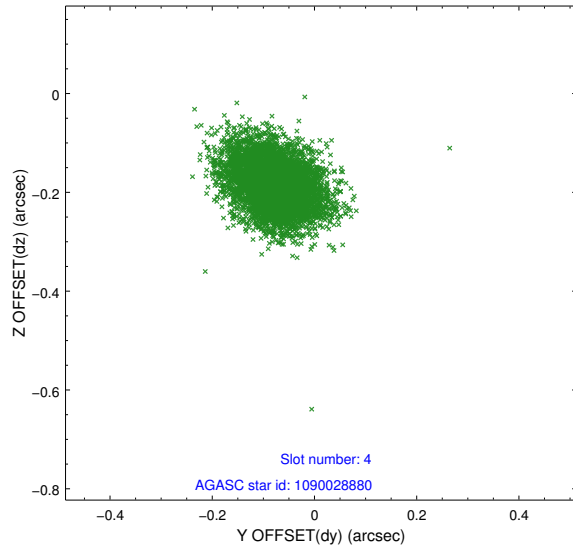
slot	status	id	mag	n_pts	med_dy	med_dz	dr1	dr2	ra	dec	mean_y	mean_z
0	FID	ACIS-I-1	7.13	2660	0.045	-0.013	0.007	0.014	0.000000	0.000000	924.82	-838.55
1	FID	ACIS-I-5	7.12	2660	-0.235	0.042	0.007	0.011	0.000000	0.000000	-1823.34	1058.71
2	FID	ACIS-I-6	7.13	2658	0.099	0.040	0.008	0.014	0.000000	0.000000	389.85	1703.79
3	GUIDE	1090028832	8.43	5318	0.016	-0.112	0.062	0.100	247.053685	-48.746399	-351.63	1794.19
4	GUIDE	1090028880	8.41	5319	-0.080	-0.184	0.068	0.113	246.652578	-48.420288	-1814.48	2184.85
5	GUIDE	1090527696	7.24	5321	0.155	0.020	0.073	0.111	246.414931	-49.424565	-134.99	-1065.77
6	GUIDE	1090535440	8.35	5319	0.035	0.070	0.075	0.118	246.931412	-49.440589	876.82	-401.63
7	GUIDE	1090522688	8.03	5318	-0.125	0.202	0.059	0.100	245.358664	-49.397960	-2176.78	-2465.84

2.4 Star Slots

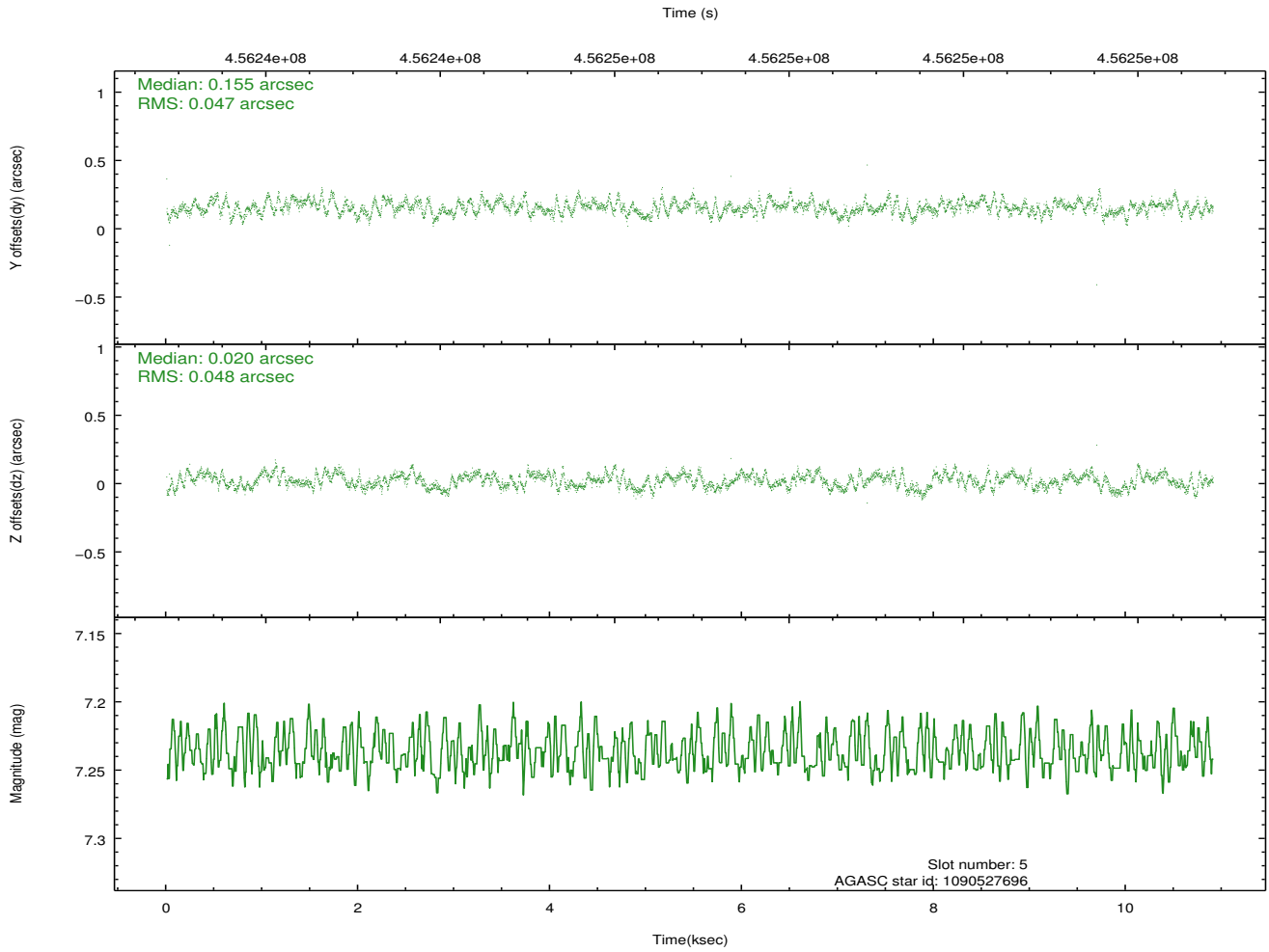
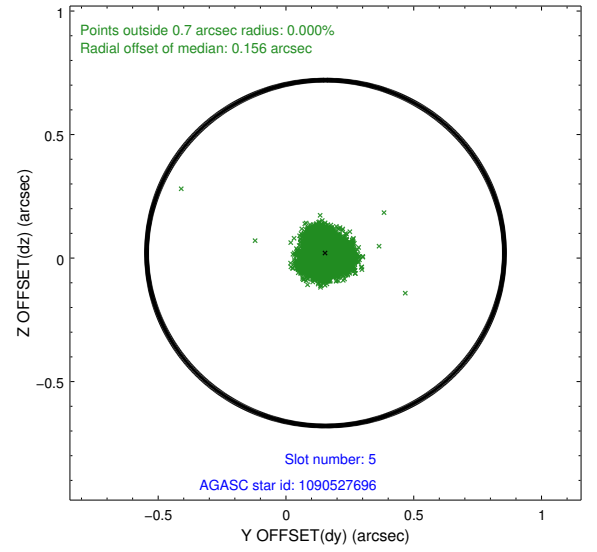
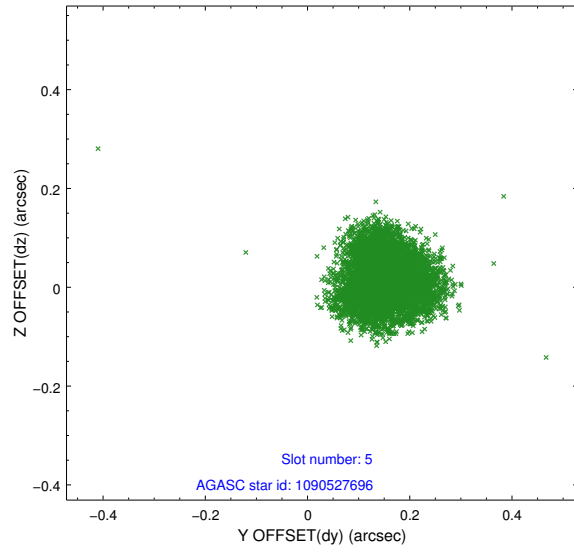
2.4.1 Slot 3



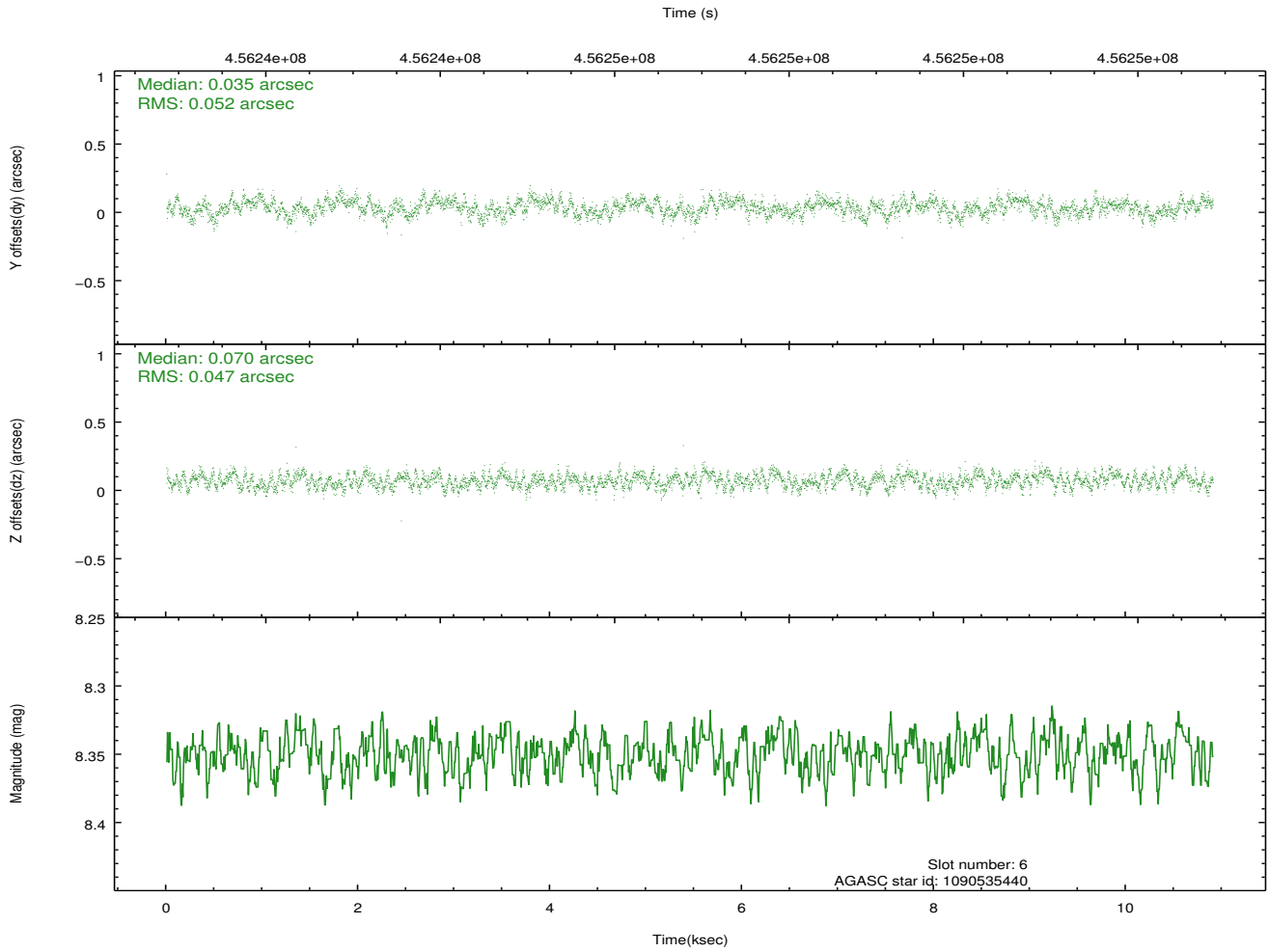
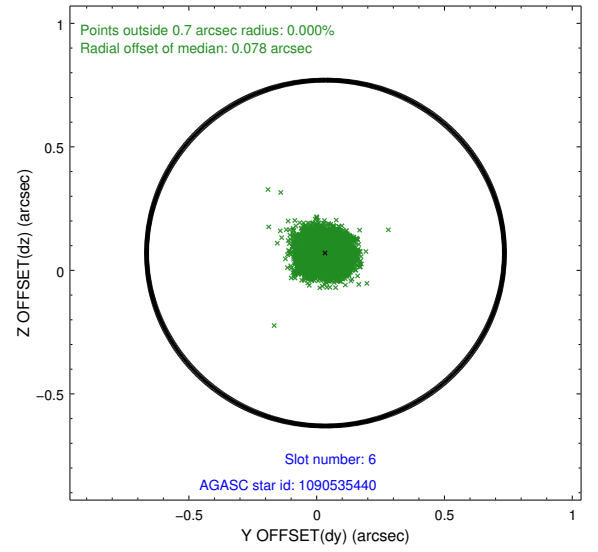
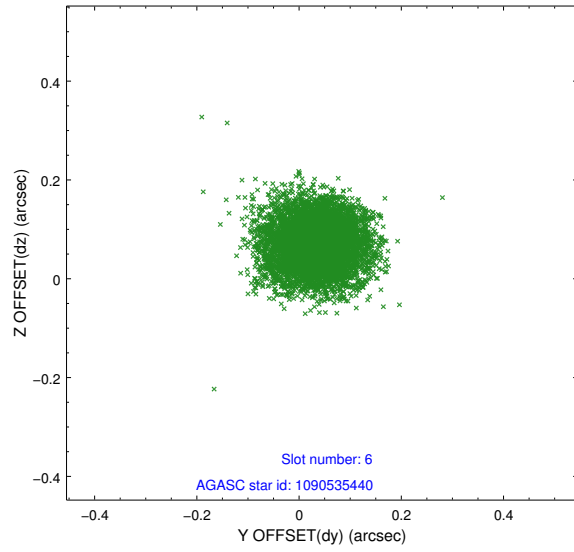
2.4.2 Slot 4



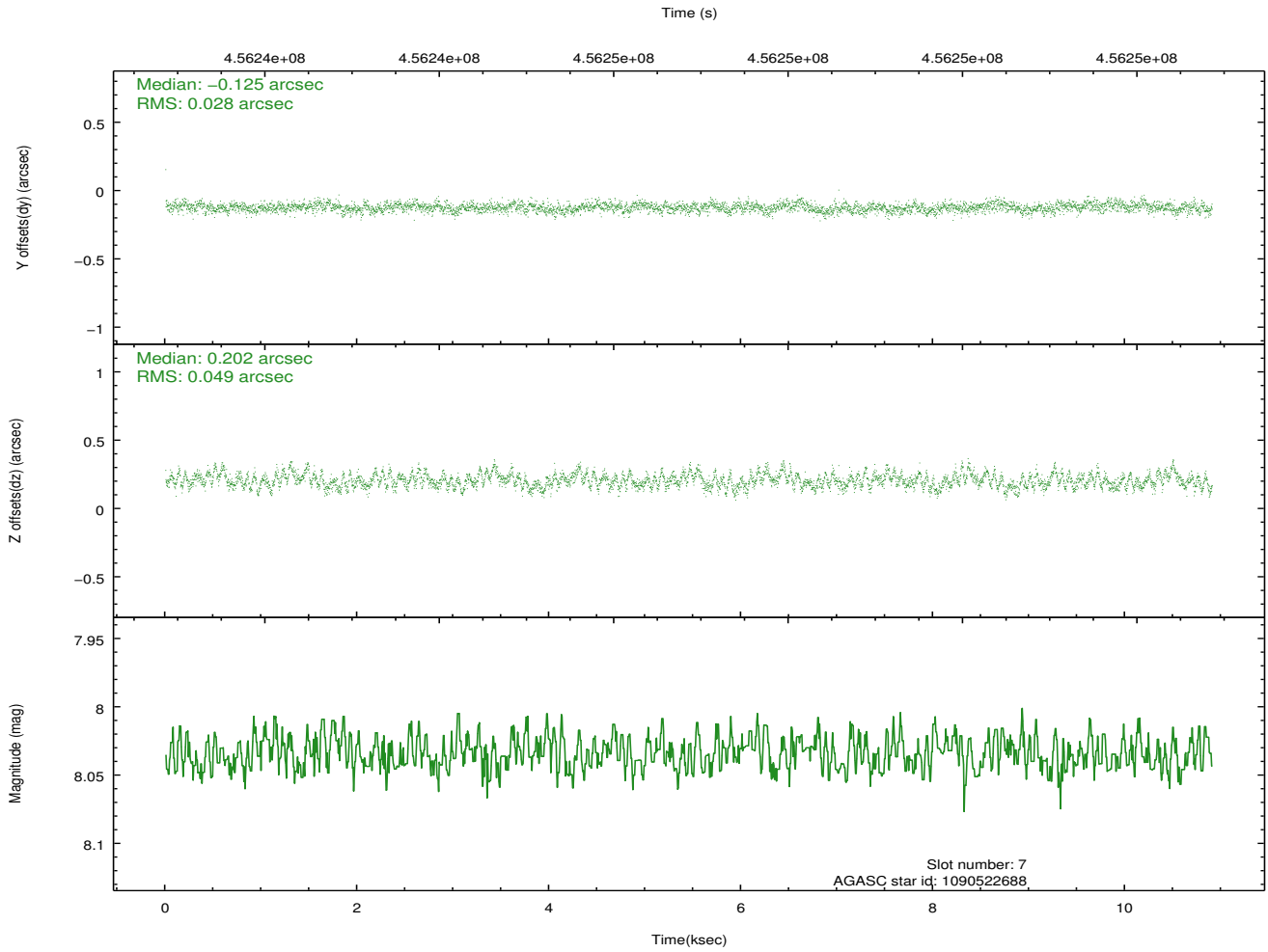
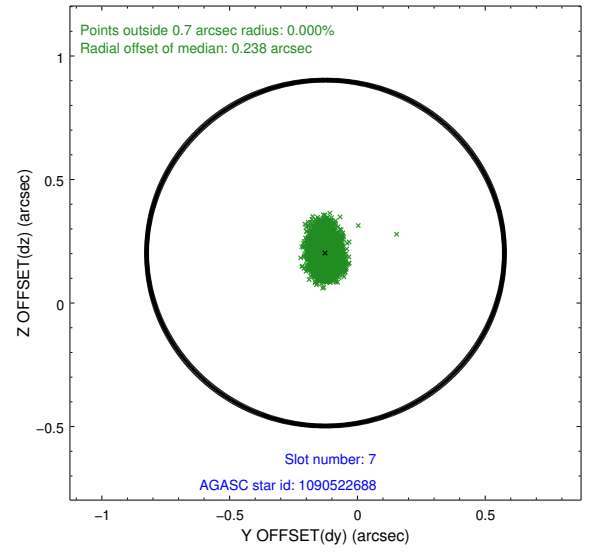
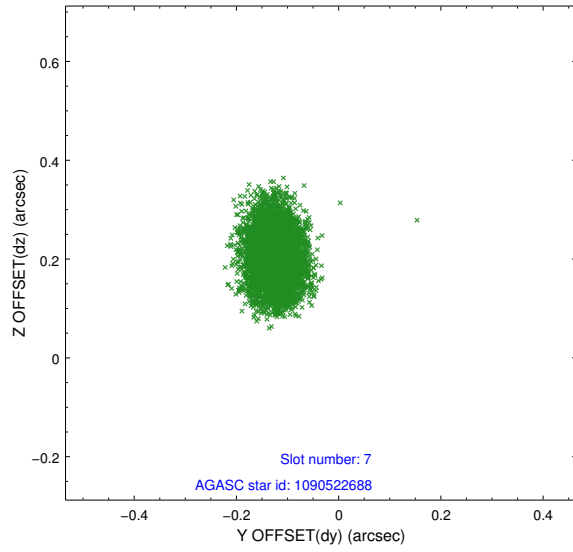
2.4.3 Slot 5



2.4.4 Slot 6

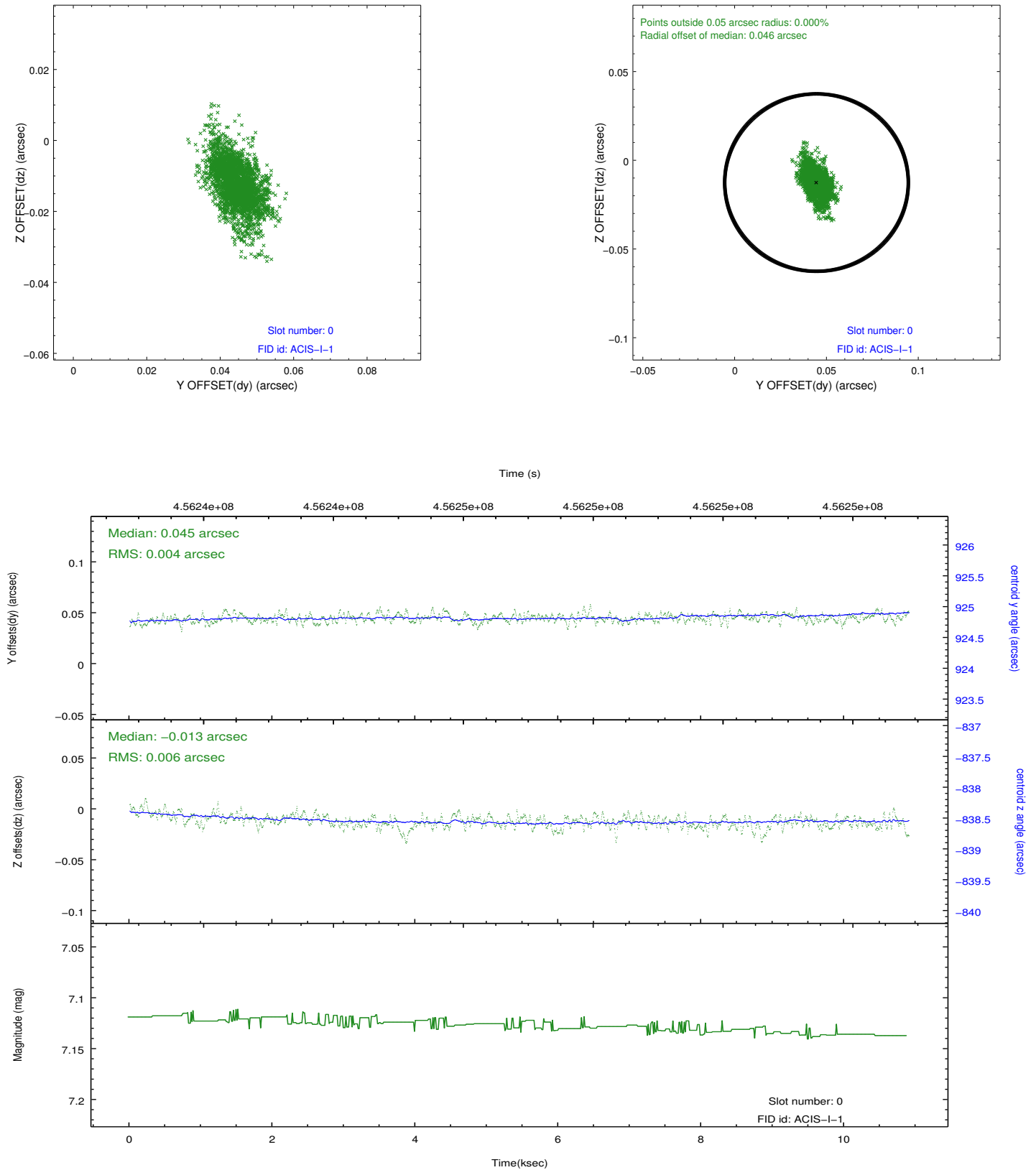


2.4.5 Slot 7

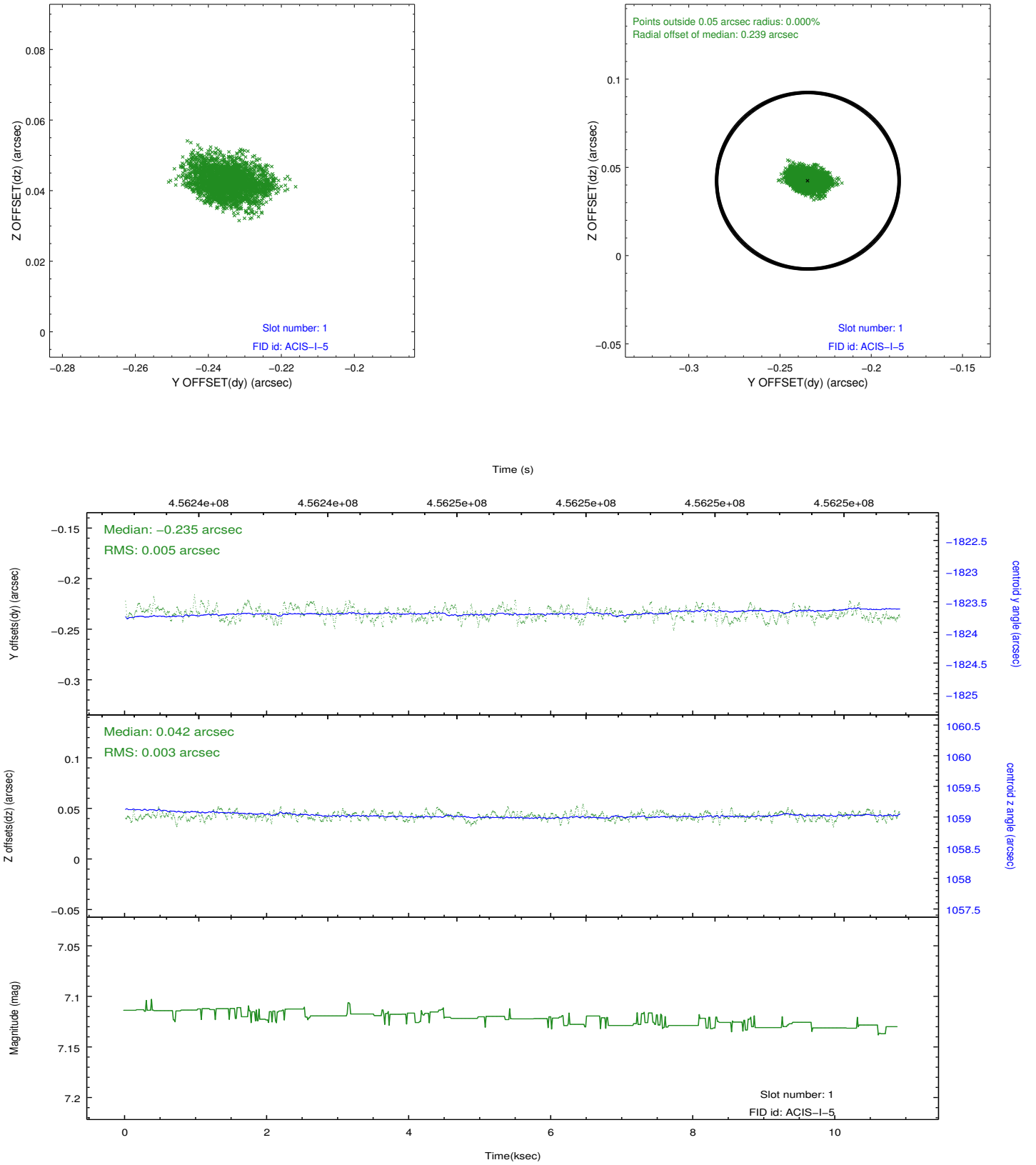


2.5 FID Slots

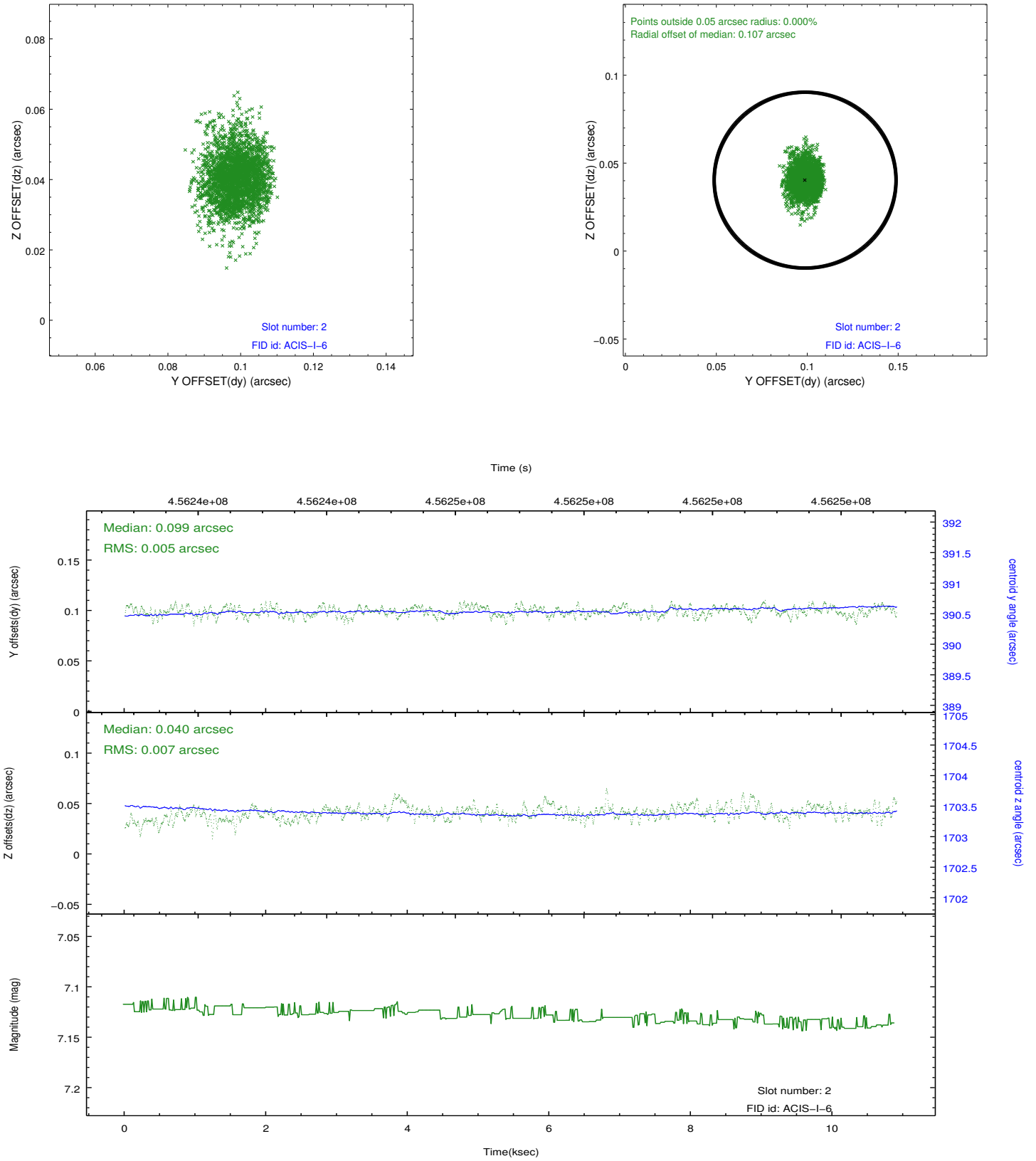
2.5.1 Slot 0



2.5.2 Slot 1



2.5.3 Slot 2



A Summary

A.1 Status

V&V Scientist	Joy Nichols
V&V Date (YYYY-MM-DD)	2012.06.18
V&V Edition	1
V&V Disposition and Status	OK
V&V Charge Time	10.166399962187

A.2 Comments