

V&V Reference Report

L2 ASCDS Version : 8.4.5

Observation 1317 - L2 Version 3
Chandra X-Ray Center

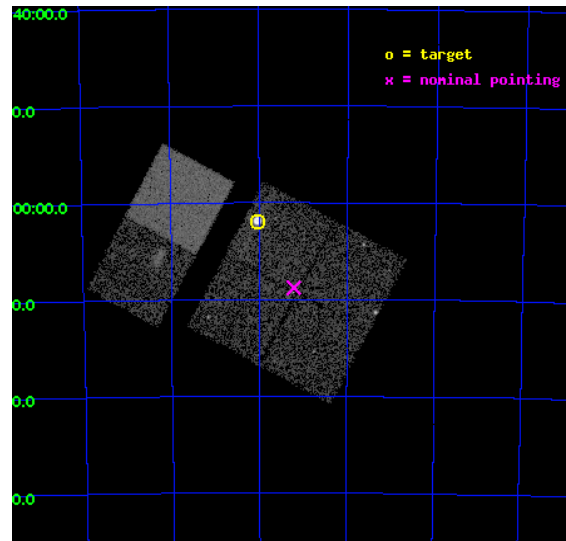
L2 Processing Date : Oct 1 2012

Contents

1	Front	2
2	OBI	3
2.1	OBI	3
2.1.1	Images	3
2.1.2	Bias	3
2.1.3	Parameters	4
2.1.4	Events	4
2.2	Compared Parameters	5
2.3	Aspect	6
2.4	Star Slots	9
2.4.1	Slot 3	9
2.4.2	Slot 4	10
2.4.3	Slot 5	11
2.4.4	Slot 6	12
2.4.5	Slot 7	13
2.5	FID Slots	14
2.5.1	Slot 0	14
2.5.2	Slot 1	15
2.5.3	Slot 2	16
A	Summary	17
A.1	Status	17
A.2	Comments	17

1 Front

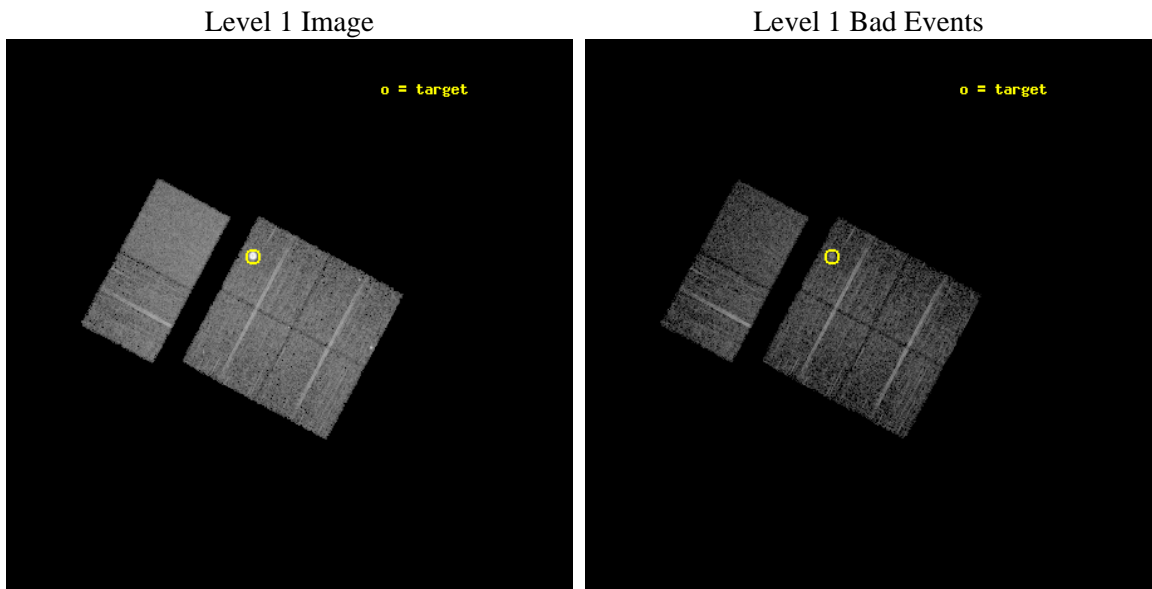
seq_num	590131	Sequence number
obs_id	1317	Observation id
title	ACIS CALIBRATION OBSERVATION OF THE SUPERNOVA REMNANT E0102-72 (DEC 2000)	Proposal title
observer	Dr. CXC Calibration	Principal investigator
object	E0102-72.3 [Chip I3, T=120, Offsets=-4,6,0]	Source name
dtcycle	0	
cycle	P	events from which exps? Prim/Second/Both
ra_targ	16.01	Observer's specified target RA [deg]
dec_targ	-72.032028	Observer's specified target Dec [deg]
ra_nom	15.802480414872	Nominal RA [deg]
dec_nom	-72.146670864343	Nominal Dec [deg]
roll_nom	298.1523186151	Nominal Roll [deg]
revision	3	Processing version of data
ontime	6956.8000064641	Sum of GTIs [s]
livetime	6868.7088159002	Livetime [s]
ontime0	6956.8000064641	Sum of GTIs [s]
ontime1	6956.8000064641	Sum of GTIs [s]
ontime2	6956.8000064641	Sum of GTIs [s]
ontime3	6956.8000064641	Sum of GTIs [s]
ontime6	6956.8000064641	Sum of GTIs [s]
ontime7	6956.8000064641	Sum of GTIs [s]
l2events	65007	Number of level 2 events



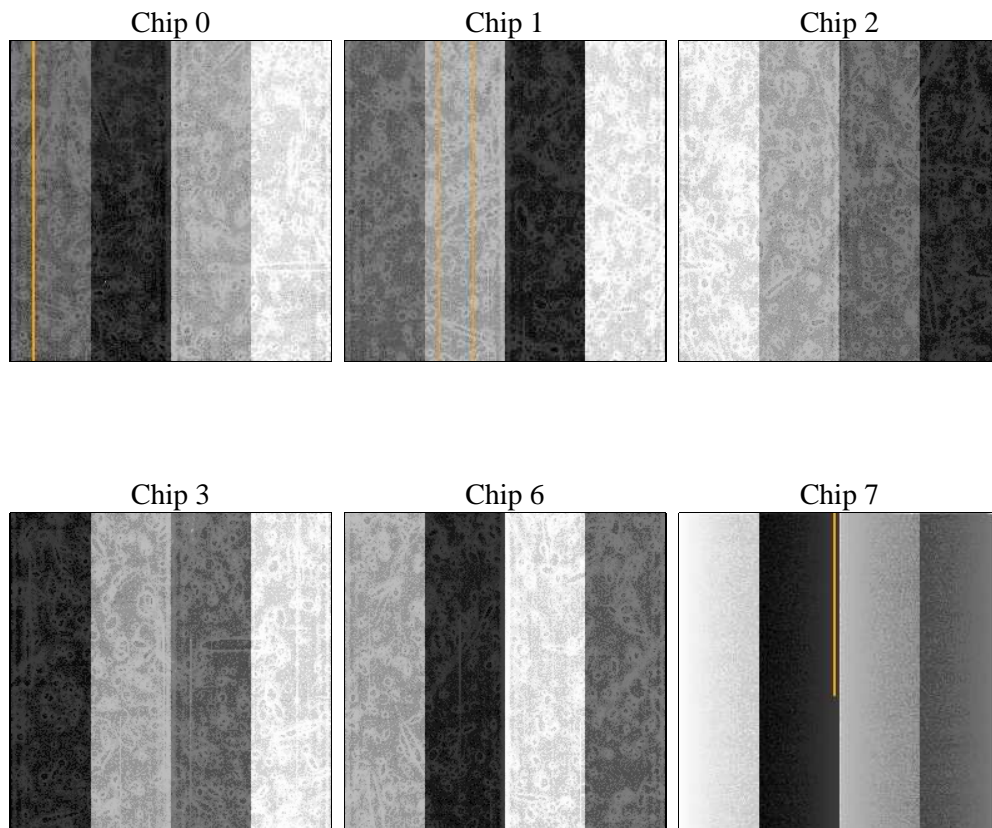
2 OBI

2.1 OBI

2.1.1 Images



2.1.2 Bias



2.1.3 Parameters

obi_num	0	Obi number	sched_exp_time	7200.000000	[s] Scheduled observation exposure time
ascdsver	8.4.5	Processing system revision	ontime	6956.8000064641	Sum of GTIs [s]
caldsver	4.5.2	 	ontime0	6956.8000064641	Sum of GTIs [s]
date	2012-10-01T21:59:29	Date and time of file creation	ontime1	6956.8000064641	Sum of GTIs [s]
revision	3	Processing version of data	ontime2	6956.8000064641	Sum of GTIs [s]
			ontime3	6956.8000064641	Sum of GTIs [s]
			ontime6	6956.8000064641	Sum of GTIs [s]
			ontime7	6956.8000064641	Sum of GTIs [s]
			l1events	277768	Number of level 1 events

2.1.4 Events

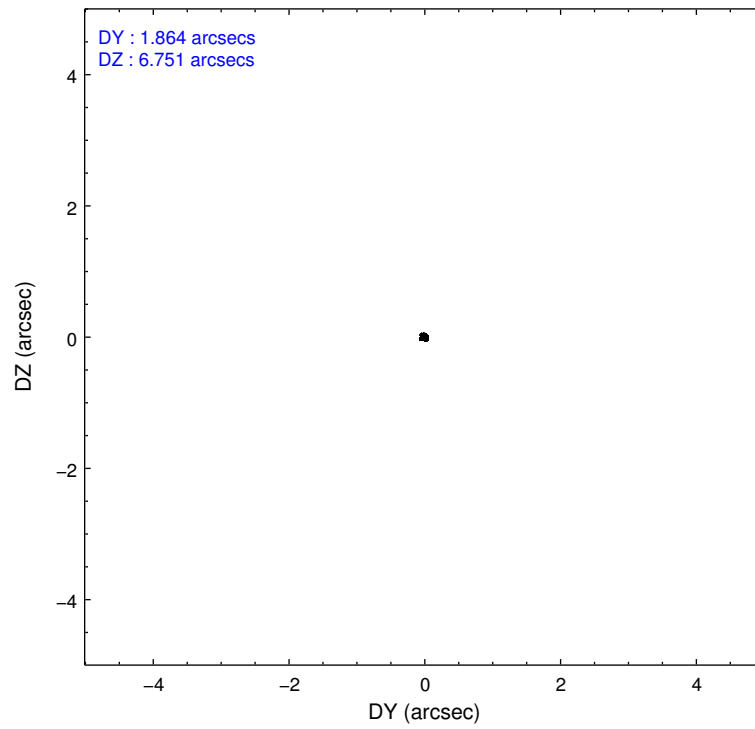
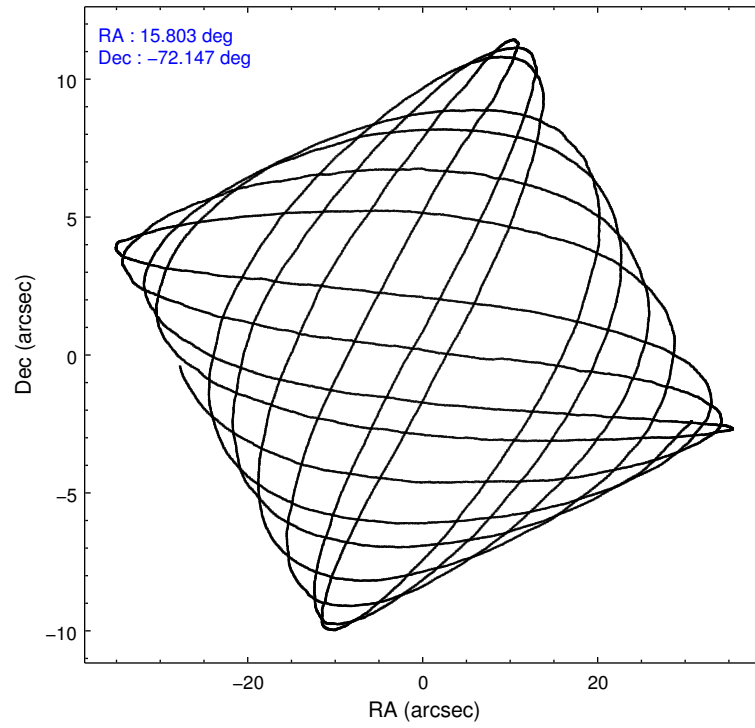
	ccd 0	ccd 1	ccd 2	ccd 3	ccd 6	ccd 7		ccd 0	ccd 1	ccd 2	ccd 3	ccd 6	ccd 7
level 1 events	37672	38941	41149	63321	43331	53354	grade 0 events	2365	2683	2635	21633	2290	2293
rejected events	32534	33056	35802	36537	38244	31322		6%	6%	6%	34%	5%	4%
rejected %	86%	84%	87%	57%	88%	58%	grade 1 events	17	22	29	165	21	45
								0%	0%	0%	0%	0%	0%
							grade 2 events	1004	1108	1001	2477	945	4267
								2%	2%	2%	3%	2%	7%
							grade 3 events	503	554	471	861	498	2054
								1%	1%	1%	1%	1%	3%
							grade 4 events	453	564	437	811	430	2024
								1%	1%	1%	1%	0%	3%
							grade 5 events	1513	1629	1376	1570	1787	5055
								4%	4%	3%	2%	4%	9%
							grade 6 events	818	979	805	1014	926	11404
								2%	2%	1%	1%	2%	21%
							grade 7 events	30999	31402	34395	34790	36434	26212
								82%	80%	83%	54%	84%	49%

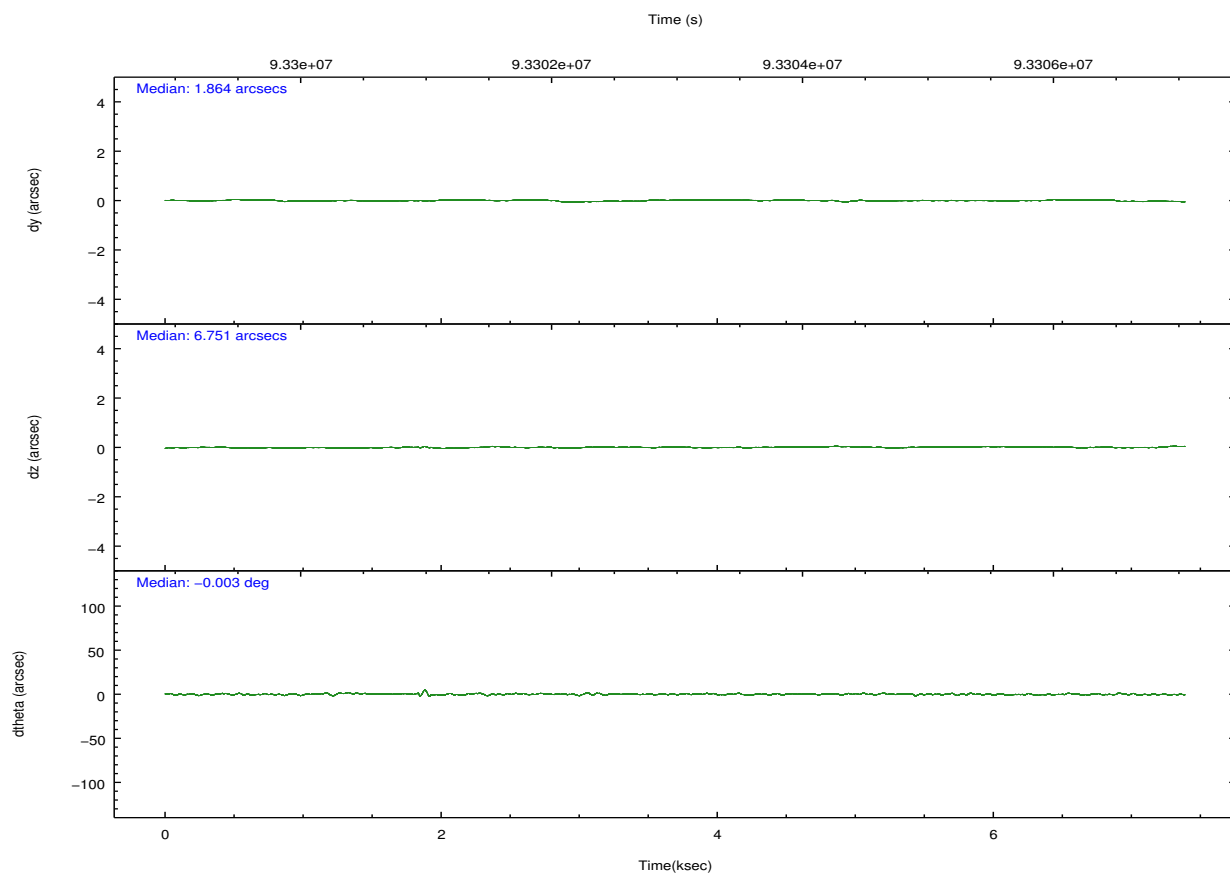
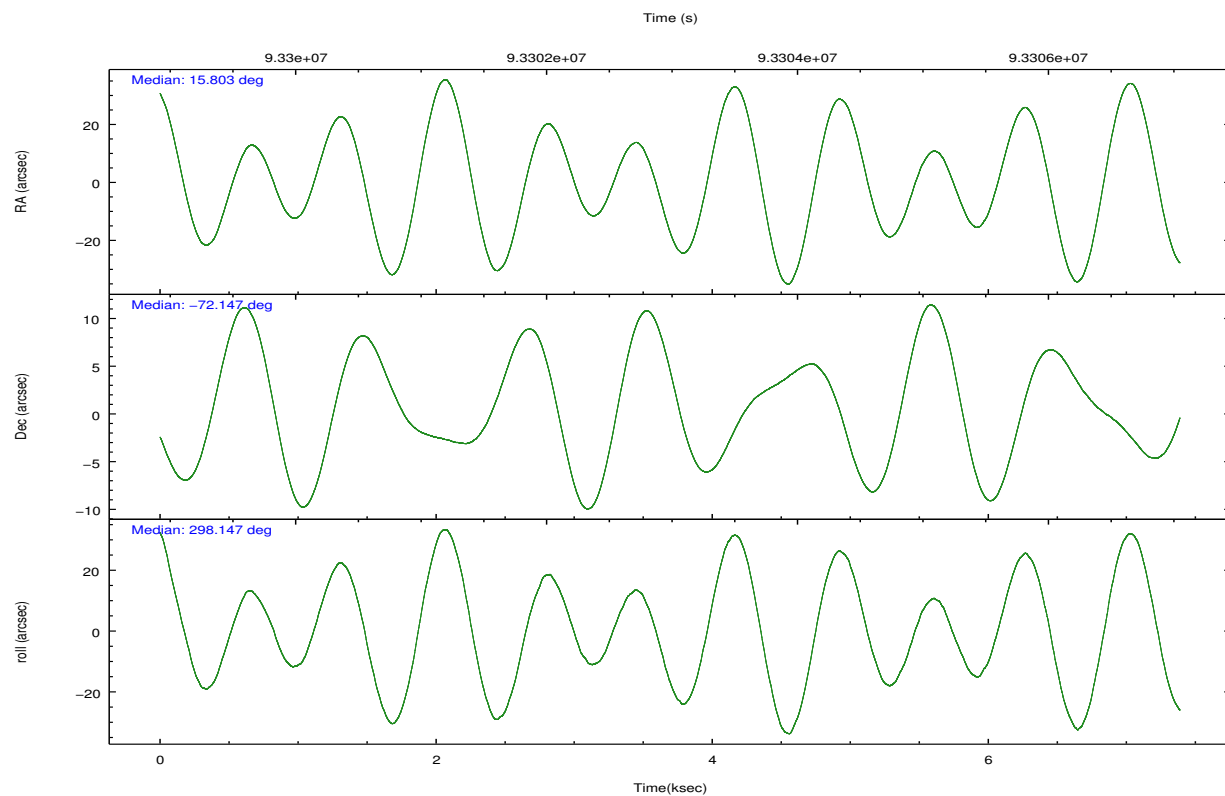
2.2 Compared Parameters

Parameter	Planned	Actual
Instrument	ACIS	ACIS
Detector	ACIS-012367	ACIS-012367
Grating	NONE	NONE
Data mode	FAINT	FAINT
Observation mode	POINTING	POINTING
[deg] Pointing RA	15.726393	15.80248041487206
[deg] Pointing Dec	-72.132044	-72.14667086434275
[deg] Pointing Roll	297.871219	298.1523186150989
[s] Window start time (MET)	92016064.184000	92016064.184000
[s] Window stop time (MET)	94608064.184000	94608064.184000
[mm] SIM focus pos	-0.782348	-0.7809083437167272
[mm] SIM defocus	0	0.001439871863259334
[mm] SIM translation stage pos	-233.592463	-233.5874344608287
[mm] SIM translation stage offset	0	-0.005018542100998502
[s] Observation start time (MET)	93299477.184000	93299101.99787401
Observation start date	2000-12-15T20:30:13	2000-12-15T20:25:01
[s] Observation end time (MET)	93306677.184000	93306811.535669
Observation end date	2000-12-15T22:30:13	2000-12-15T22:33:31
Read mode	TIMED	TIMED

Parameter	Planned	Actual
Obspar format version number	7	7
Obspar file type	PREDICTED	ACTUAL
Obspar update status	NONE	UPDATED
Number of optional ACIS chips dropped	0	0
On-chip summing requested	N	N
Subarray requested	NONE	NONE
Alternating exposures requested	N	N
[s] Primary exposure time	0.000000	3.2

2.3 Aspect



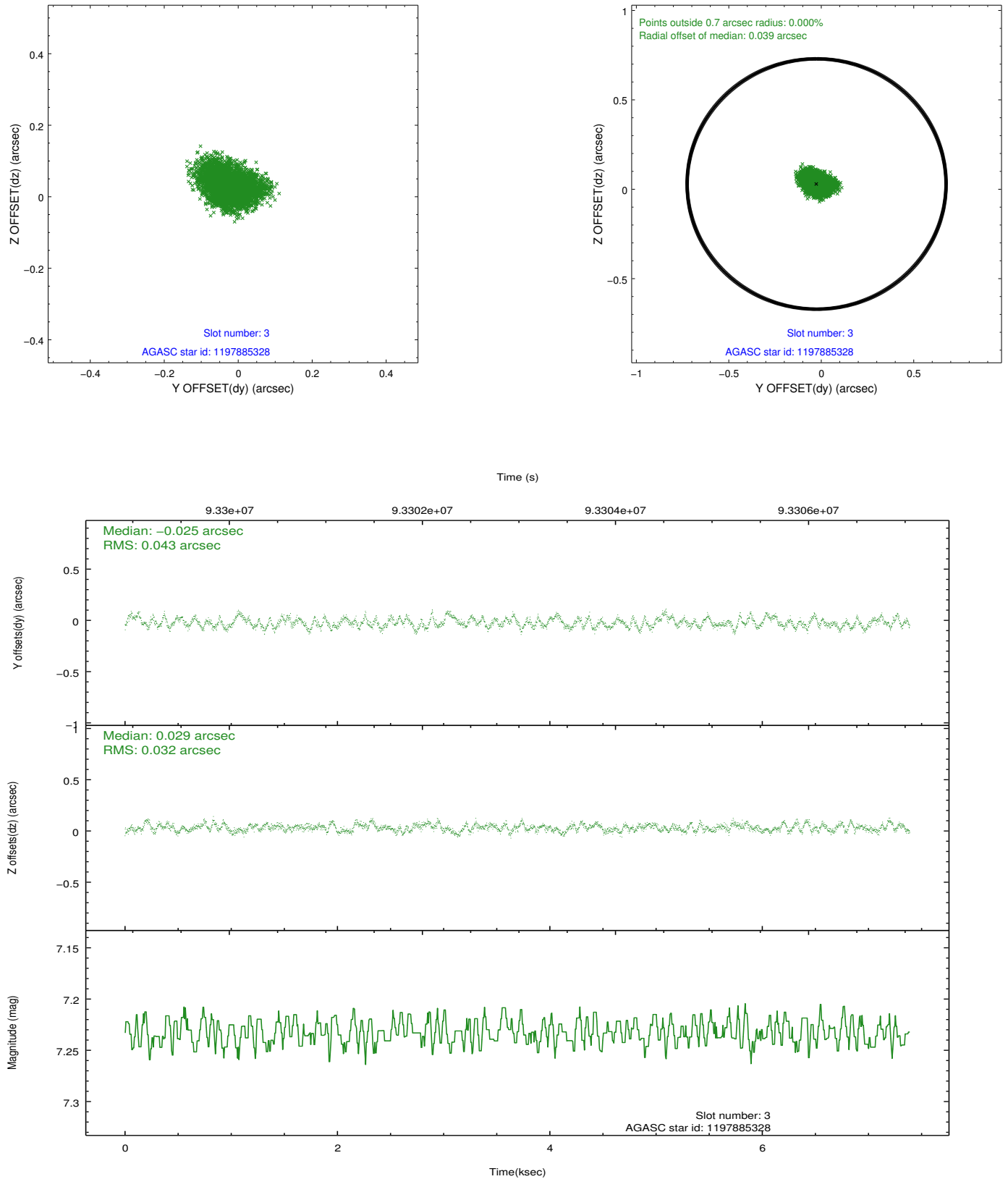


Slot Statistics

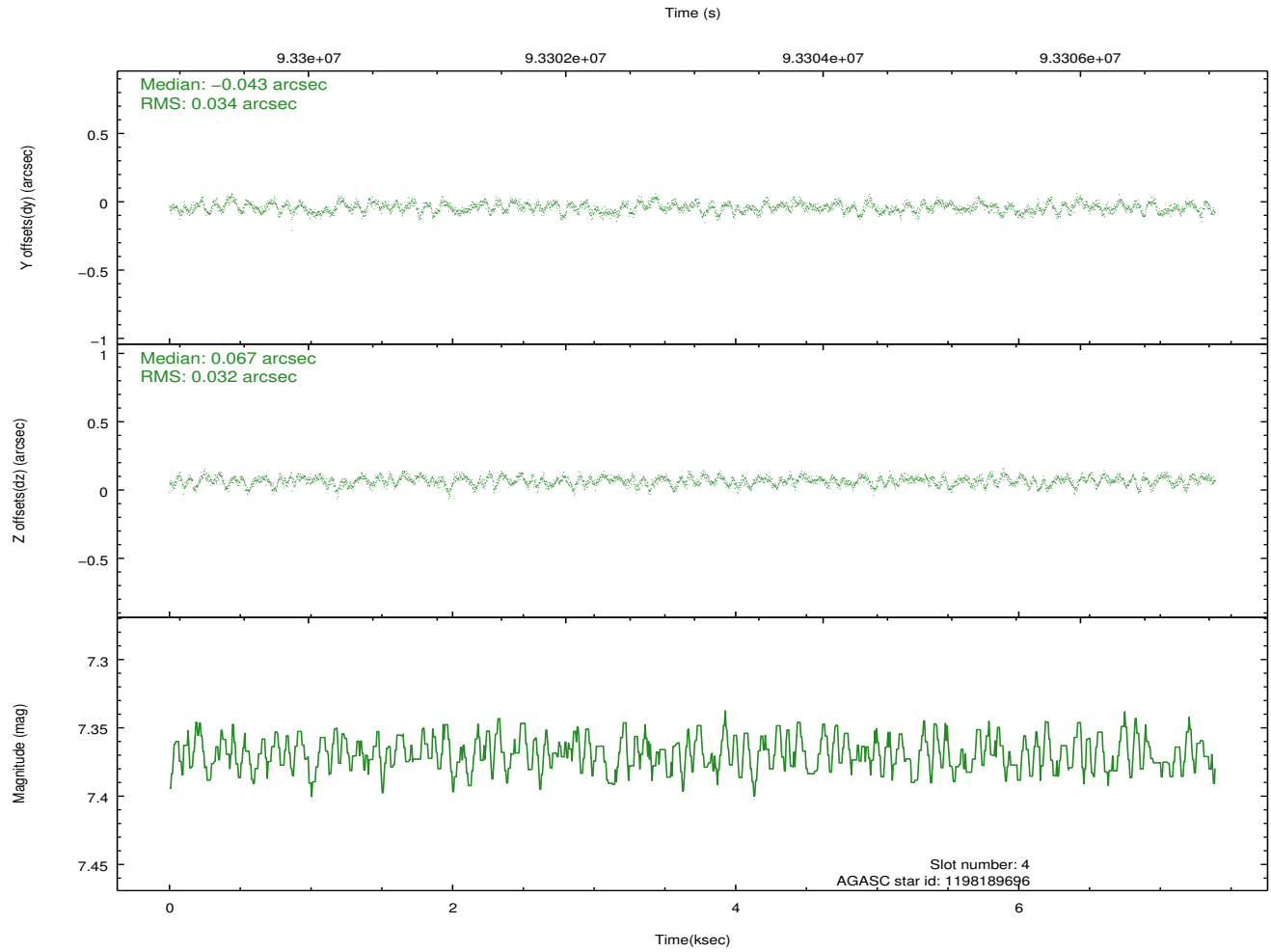
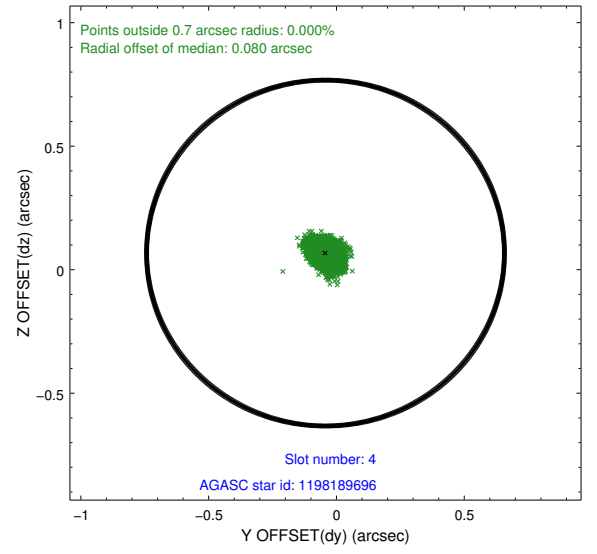
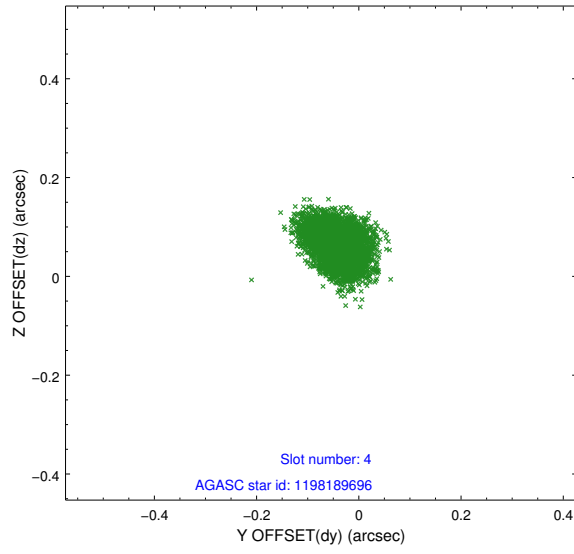
slot	status	id	mag	n_pts	med_dy	med_dz	dr1	dr2	ra	dec	mean_y	mean_z
0	FID	ACIS-I-2	7.15	1802	-0.039	-0.074	0.009	0.016	0.000000	0.000000	-756.24	-836.58
1	FID	ACIS-I-4	7.18	1801	-0.030	0.050	0.007	0.012	0.000000	0.000000	2157.46	1069.35
2	FID	ACIS-I-5	7.23	1801	-0.032	0.093	0.009	0.015	0.000000	0.000000	-1809.08	1068.10
3	GUIDE	1197885328	7.23	3605	-0.025	0.029	0.058	0.091	16.283090	-71.733943	-971.51	1223.84
4	GUIDE	1198189696	7.37	3605	-0.043	0.067	0.051	0.079	15.223750	-72.697522	1549.20	-1428.04
5	GUIDE	1197750936	7.56	3604	-0.045	-0.013	0.045	0.075	15.387940	-71.549550	-2033.34	638.19
6	GUIDE	1197884536	8.50	3603	0.004	0.029	0.065	0.107	17.160729	-71.835289	-176.40	1913.44
7	GUIDE	1197884712	8.29	3603	0.107	-0.111	0.048	0.077	16.087398	-72.252690	569.59	146.96

2.4 Star Slots

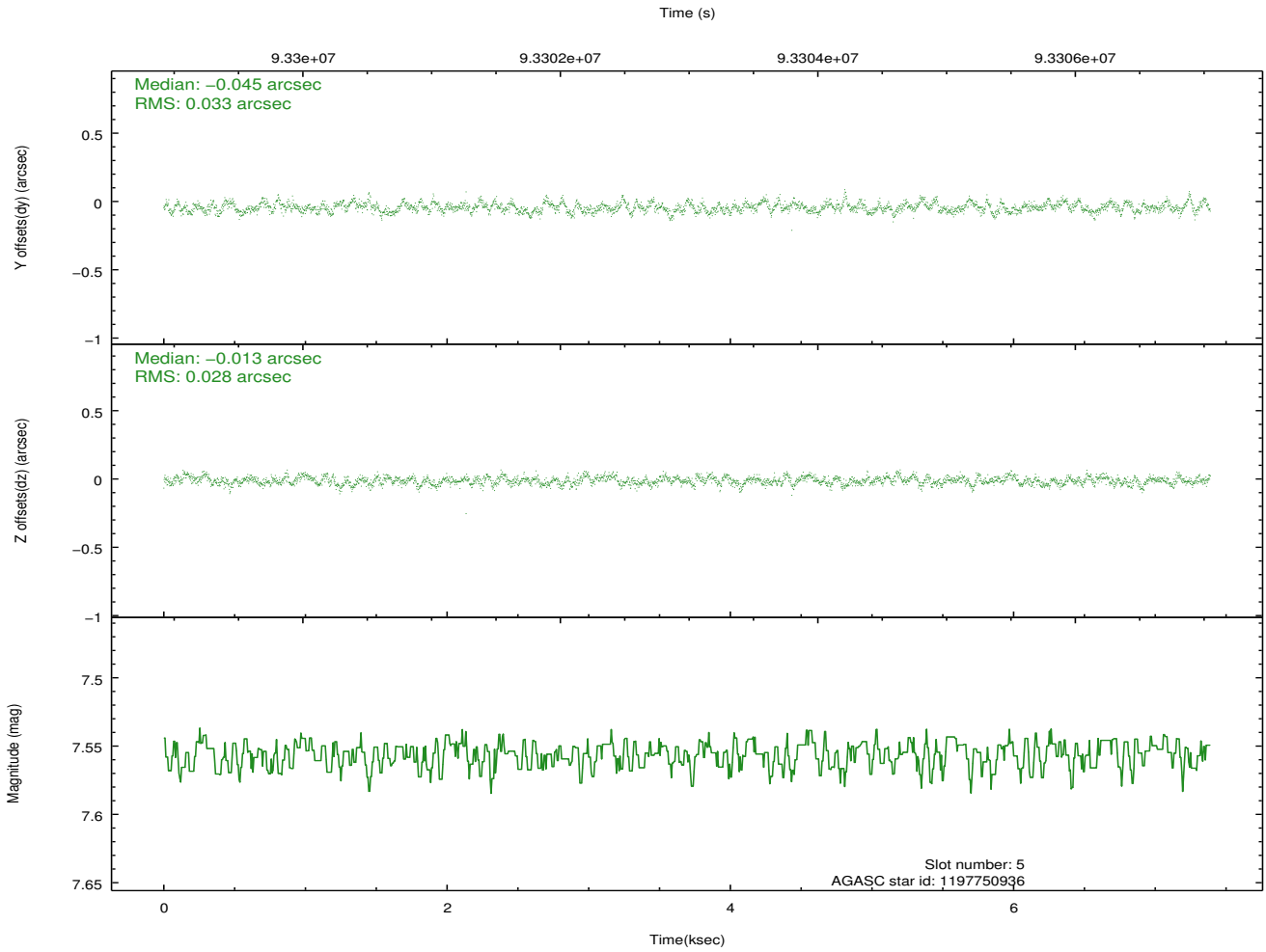
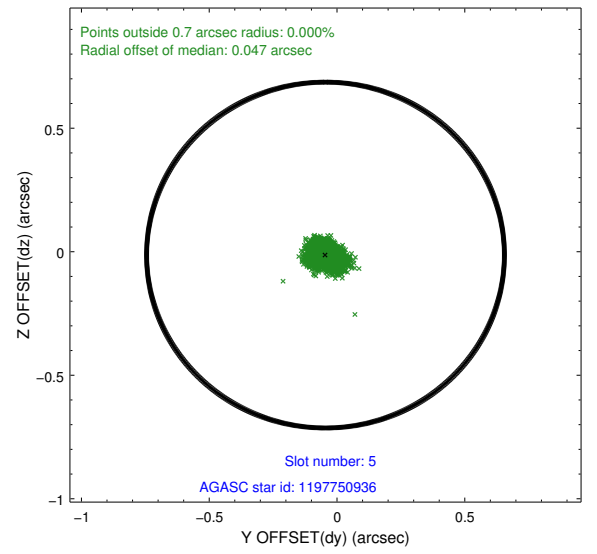
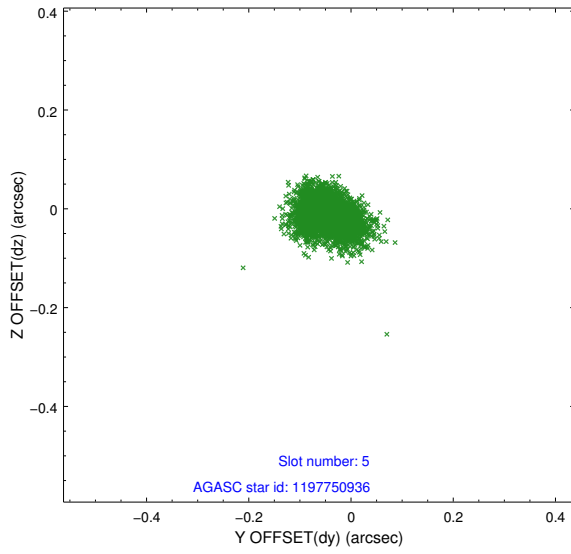
2.4.1 Slot 3



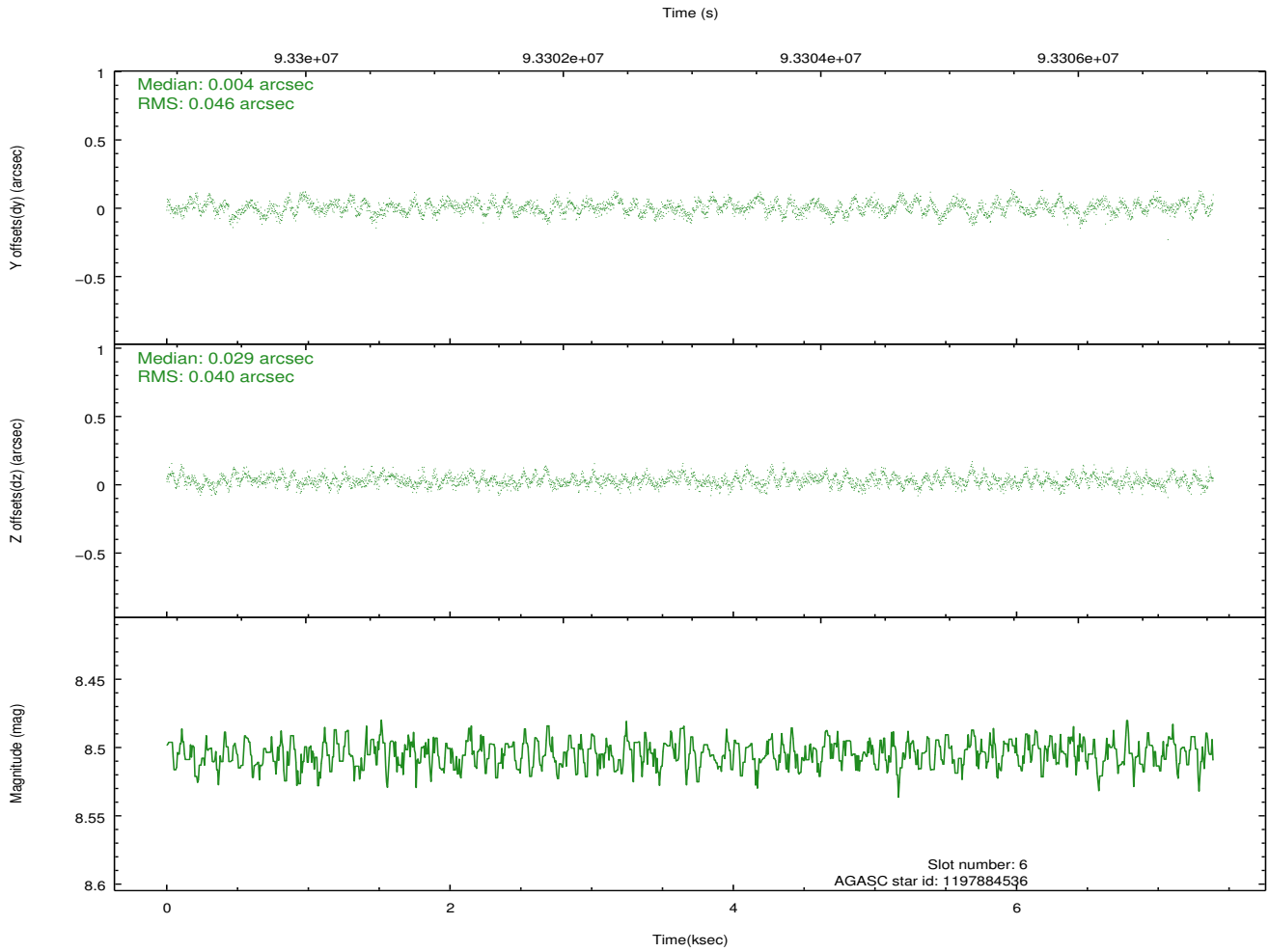
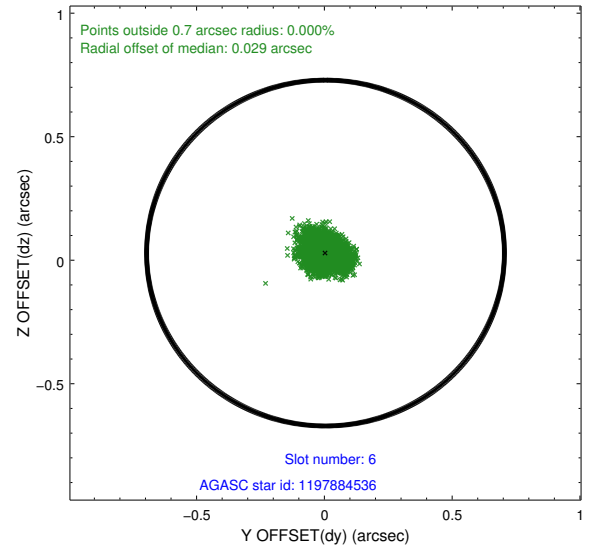
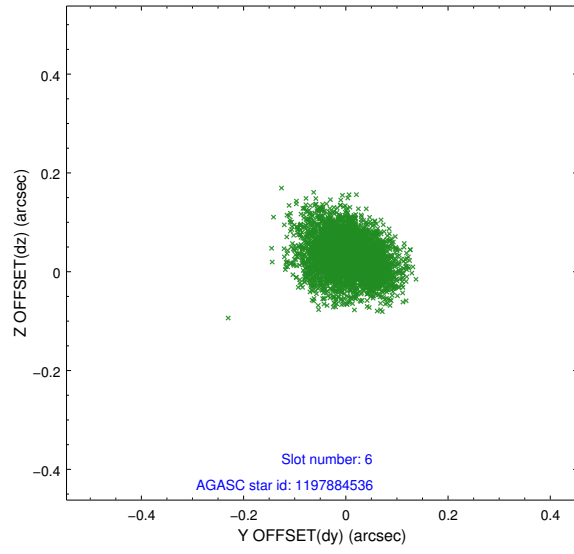
2.4.2 Slot 4



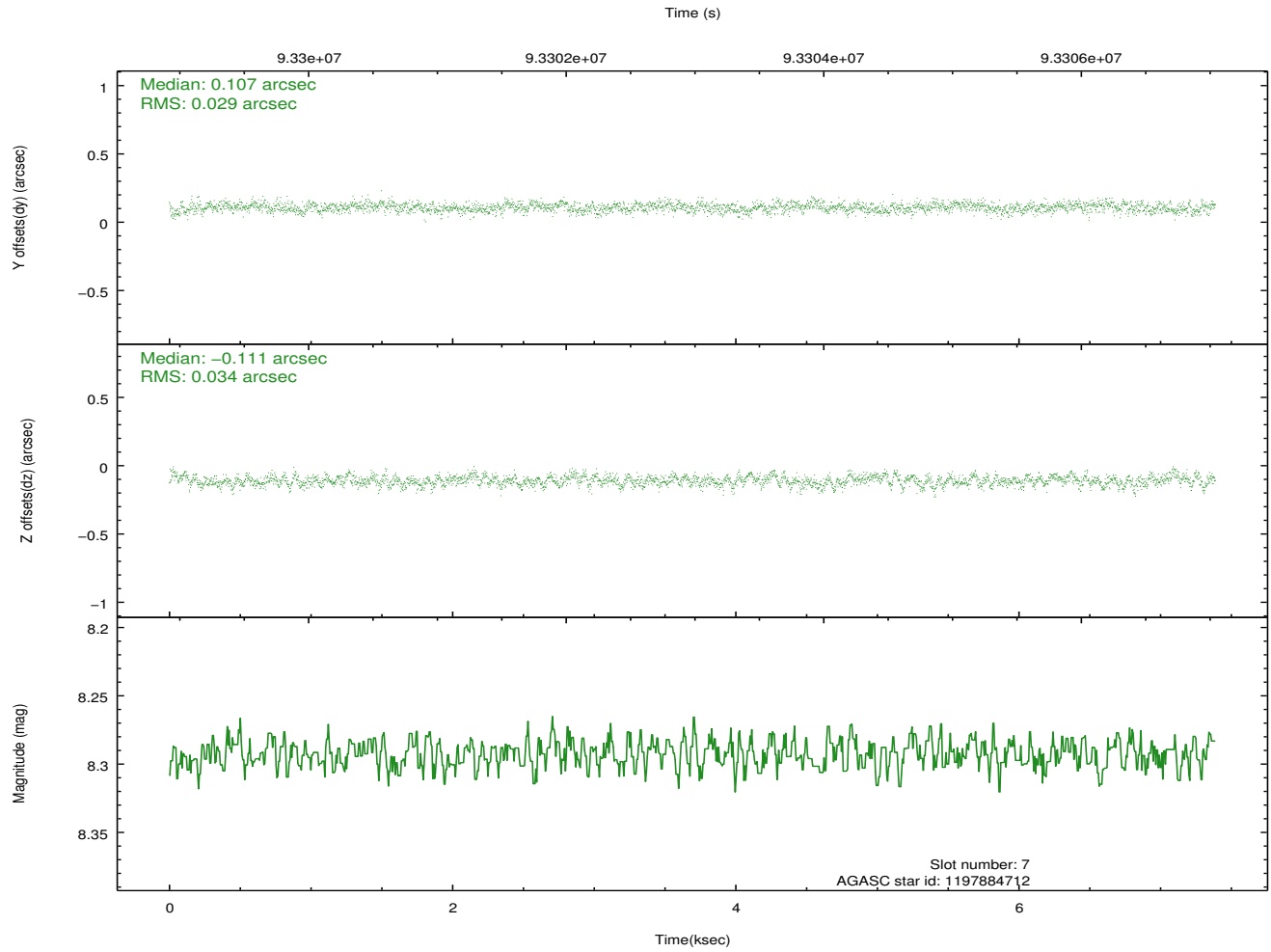
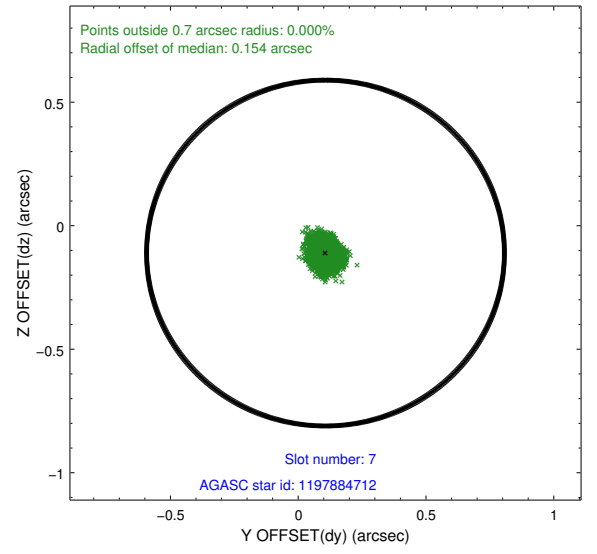
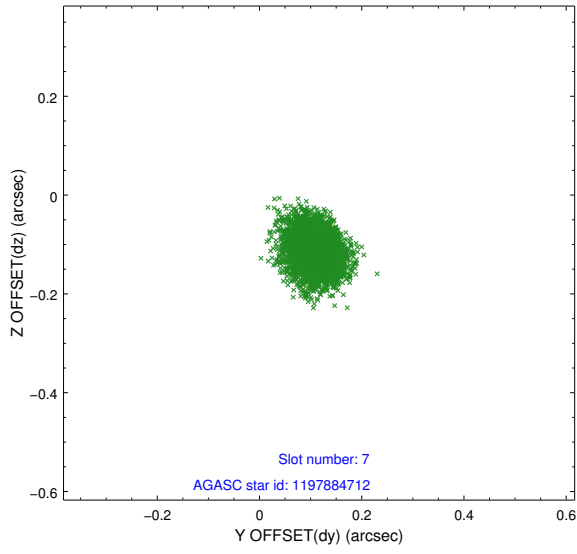
2.4.3 Slot 5



2.4.4 Slot 6

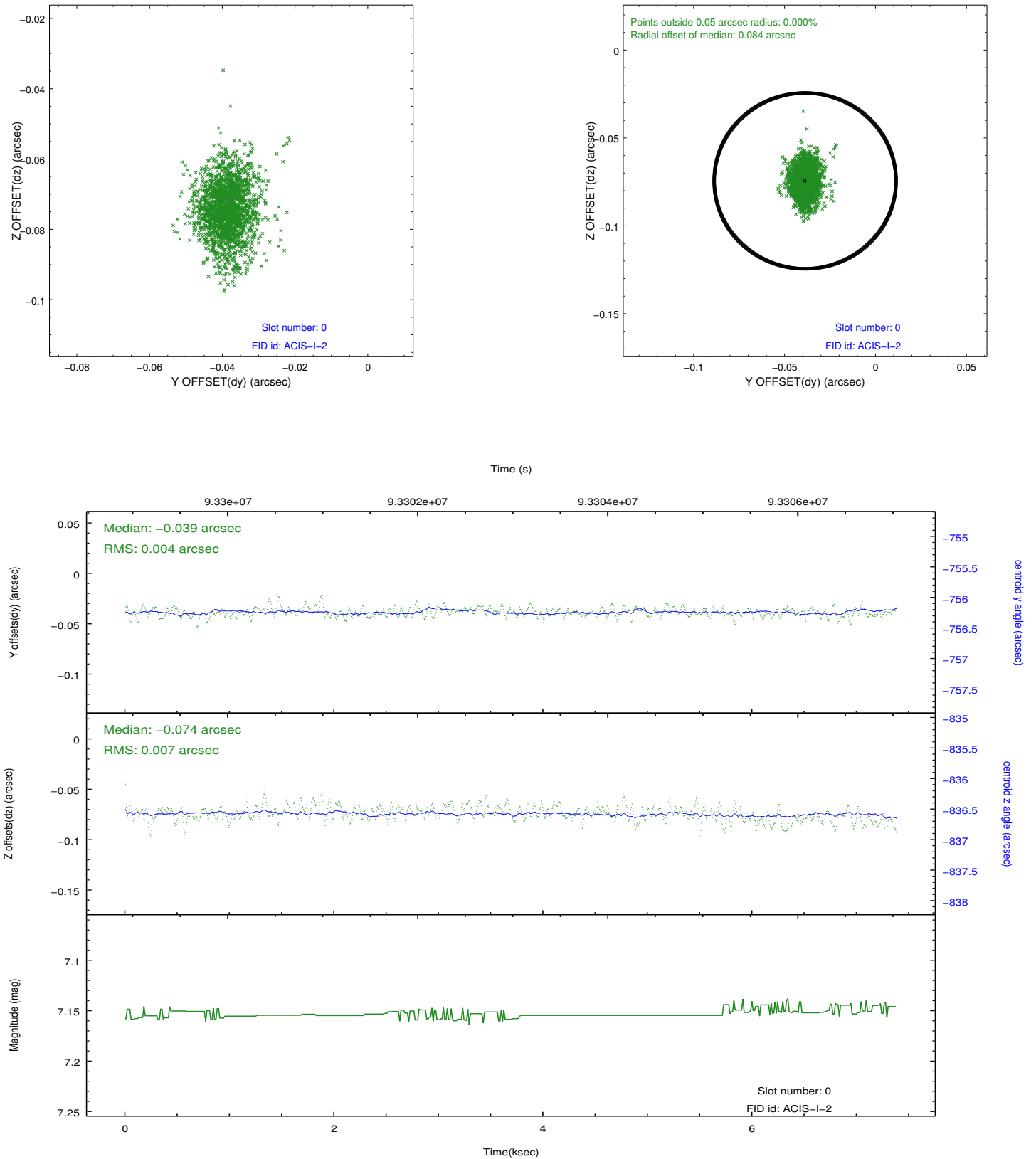


2.4.5 Slot 7

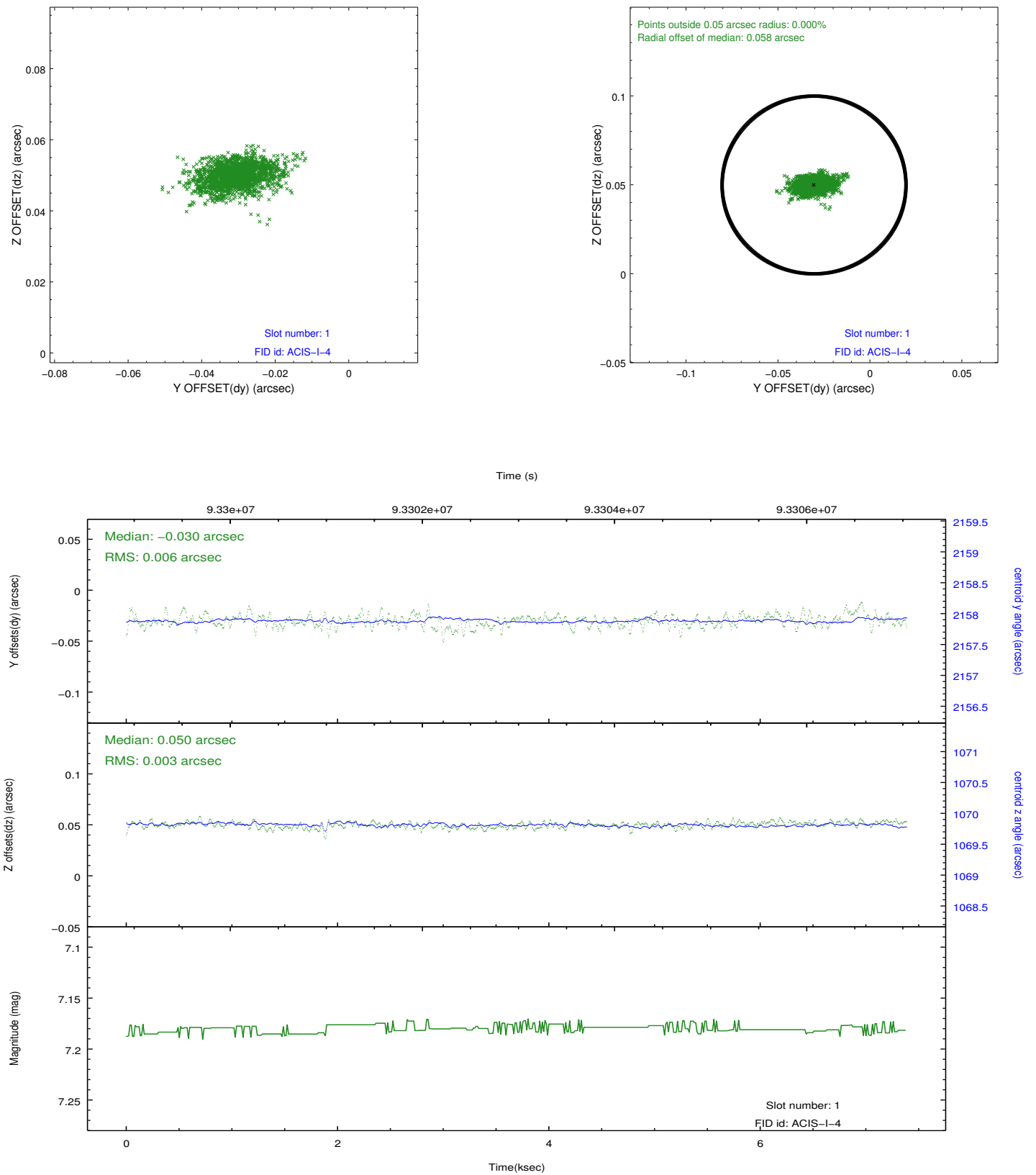


2.5 FID Slots

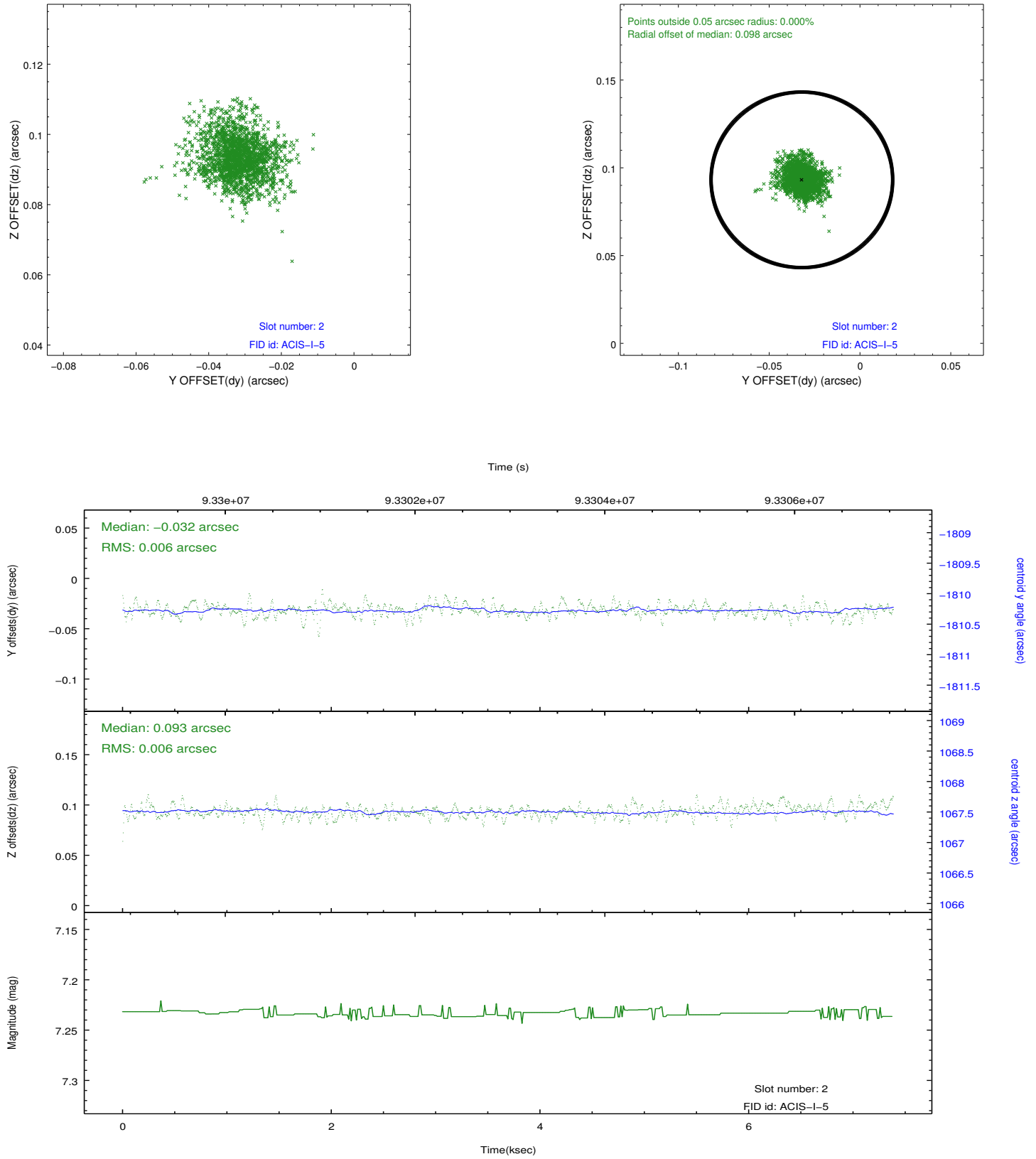
2.5.1 Slot 0



2.5.2 Slot 1



2.5.3 Slot 2



A Summary

A.1 Status

V&V Scientist	Joy Nichols
V&V Date (YYYY-MM-DD)	2012.10.11
V&V Edition	1
V&V Disposition and Status	OK
V&V Charge Time	6.96

A.2 Comments

There are 2 observations with the obsid number 1317. They appear in separate spacecraft loads with these duplicate numbers. Because the 2 obsids used different instrument configurations, the telemetry file of the other obsid 1317 was edited to create a new obsid number, obsid 62870. This obsid retains the 1317 designation.