

V&V Reference Report

L2 ASCDS Version : 8.4.5

Observation 13127 - L2 Version 2
Chandra X-Ray Center

L2 Processing Date : Jul 3 2012

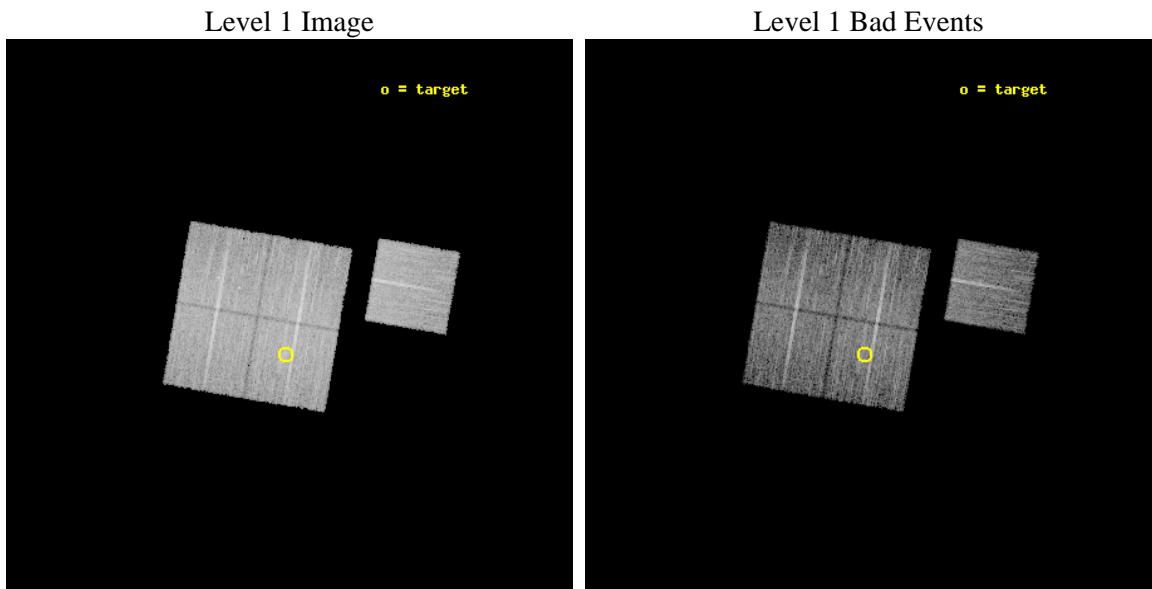
Contents

1	Front	2
2	OBI	3
2.1	OBI	3
2.1.1	Images	3
2.1.2	Bias	3
2.1.3	Parameters	4
2.1.4	Events	4
2.2	Compared Parameters	5
2.3	Aspect	6
2.4	Star Slots	9
2.4.1	Slot 3	9
2.4.2	Slot 4	10
2.4.3	Slot 5	11
2.4.4	Slot 6	12
2.4.5	Slot 7	13
2.5	FID Slots	14
2.5.1	Slot 0	14
2.5.2	Slot 1	15
2.5.3	Slot 2	16
A	Summary	17
A.1	Status	17
A.2	Comments	17

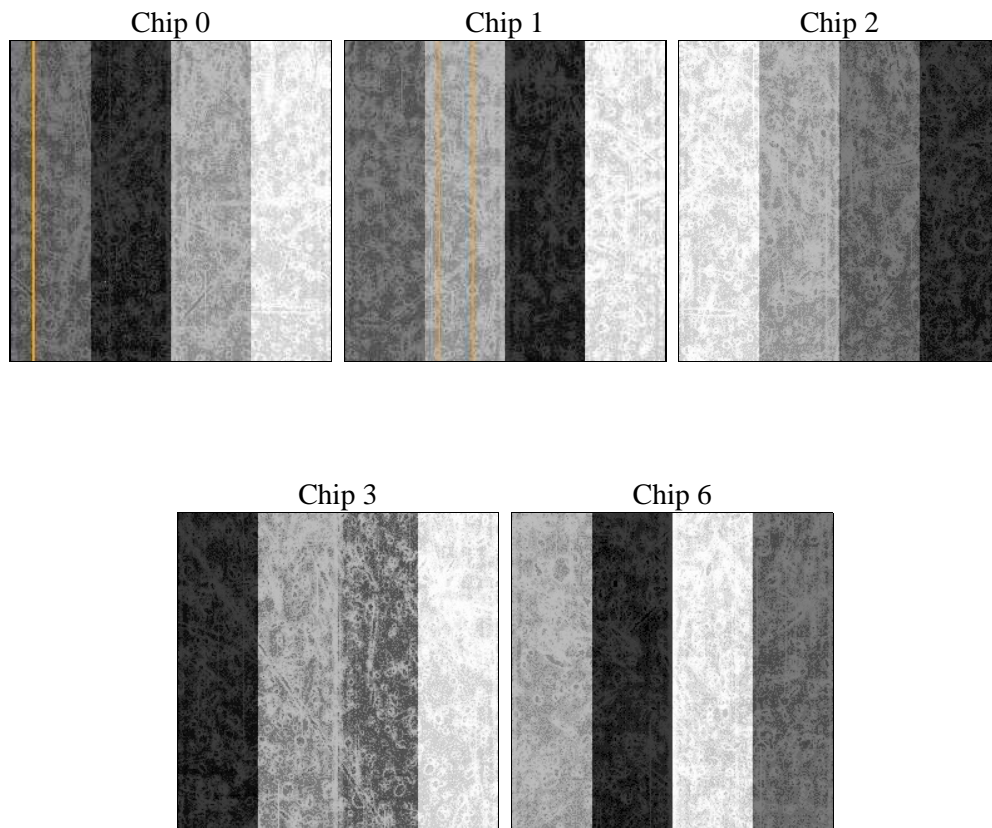
2 OBI

2.1 OBI

2.1.1 Images



2.1.2 Bias



2.1.3 Parameters

obi_num	0	Obi number	sched_exp_time	10000.000000	[s] Scheduled observation exposure time
ascdsver	8.4.5	Processing system revision	ontime	10052.220153749	Sum of GTIs [s]
caldbver	4.5.0	 	ontime0	10045.815202713	Sum of GTIs [s]
date	2012-07-03T08:07:13	Date and time of file creation	ontime1	10052.138073742	Sum of GTIs [s]
revision	2	Processing version of data	ontime2	10052.179113746	Sum of GTIs [s]
			ontime3	10052.220153749	Sum of GTIs [s]
			ontime6	10048.915003538	Sum of GTIs [s]
			l1events	346519	Number of level 1 events

2.1.4 Events

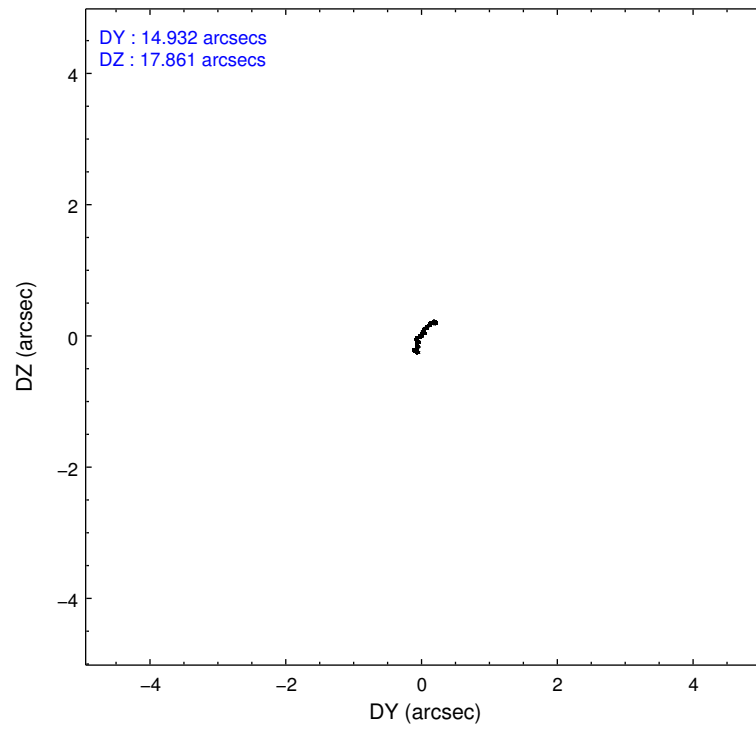
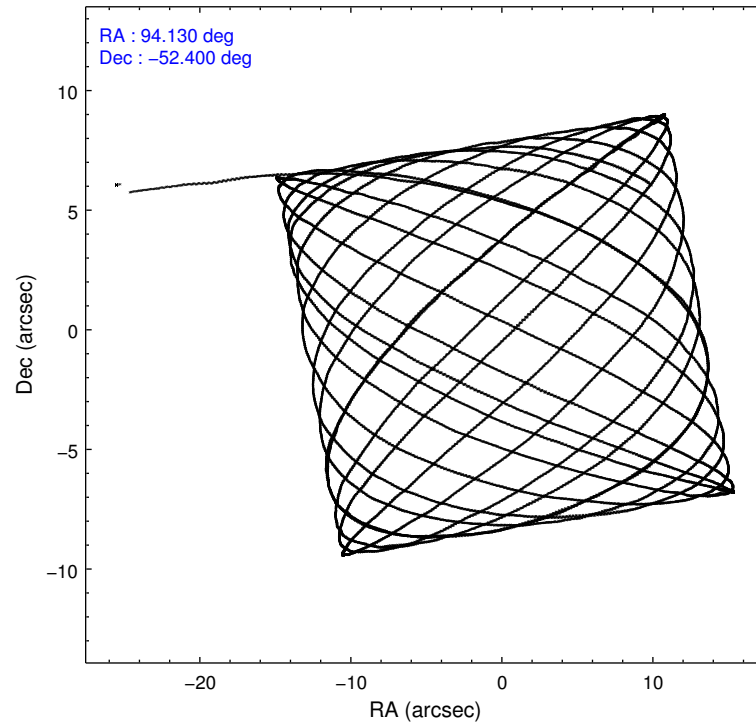
	ccd 0	ccd 1	ccd 2	ccd 3	ccd 6
level 1 events	65698	64920	72818	72984	70099
rejected events	57310	56349	64962	64796	62038
rejected %	87%	86%	89%	88%	88%

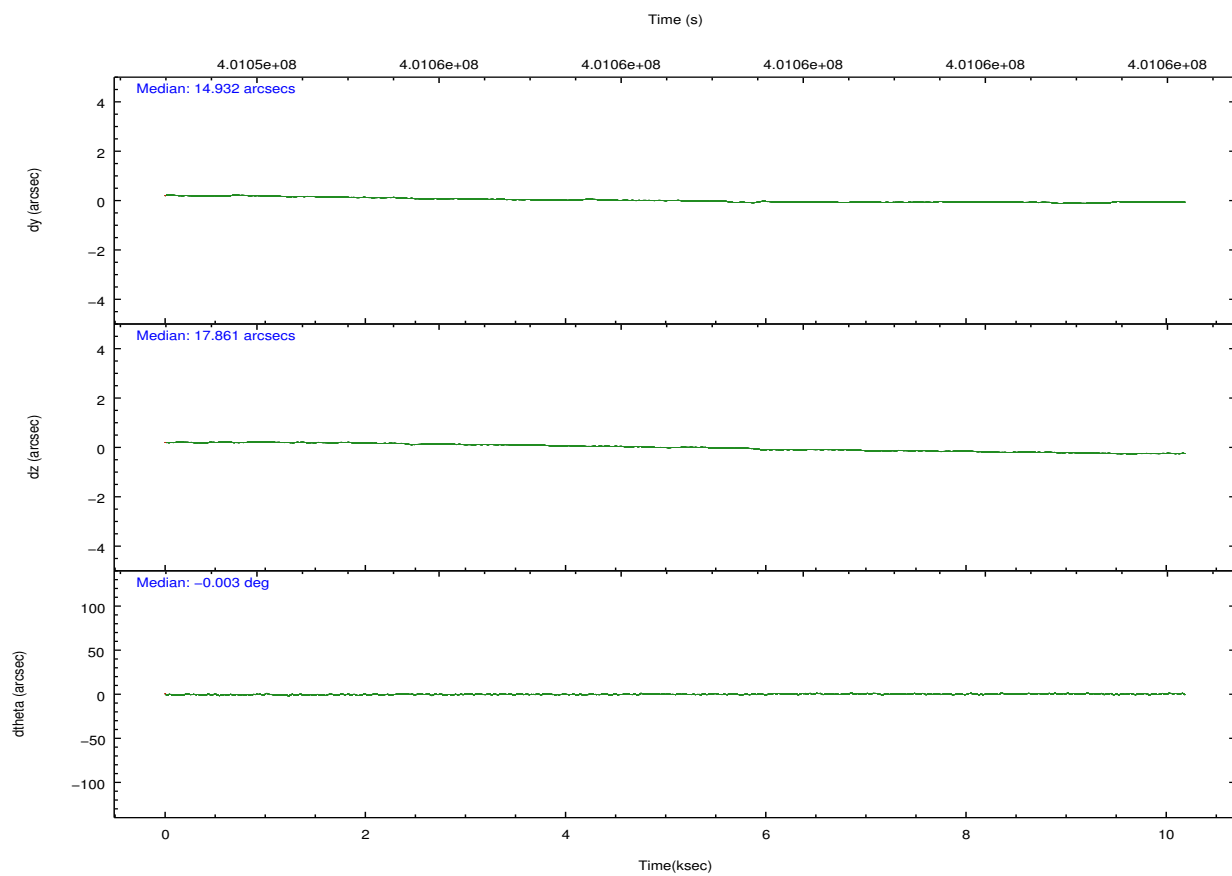
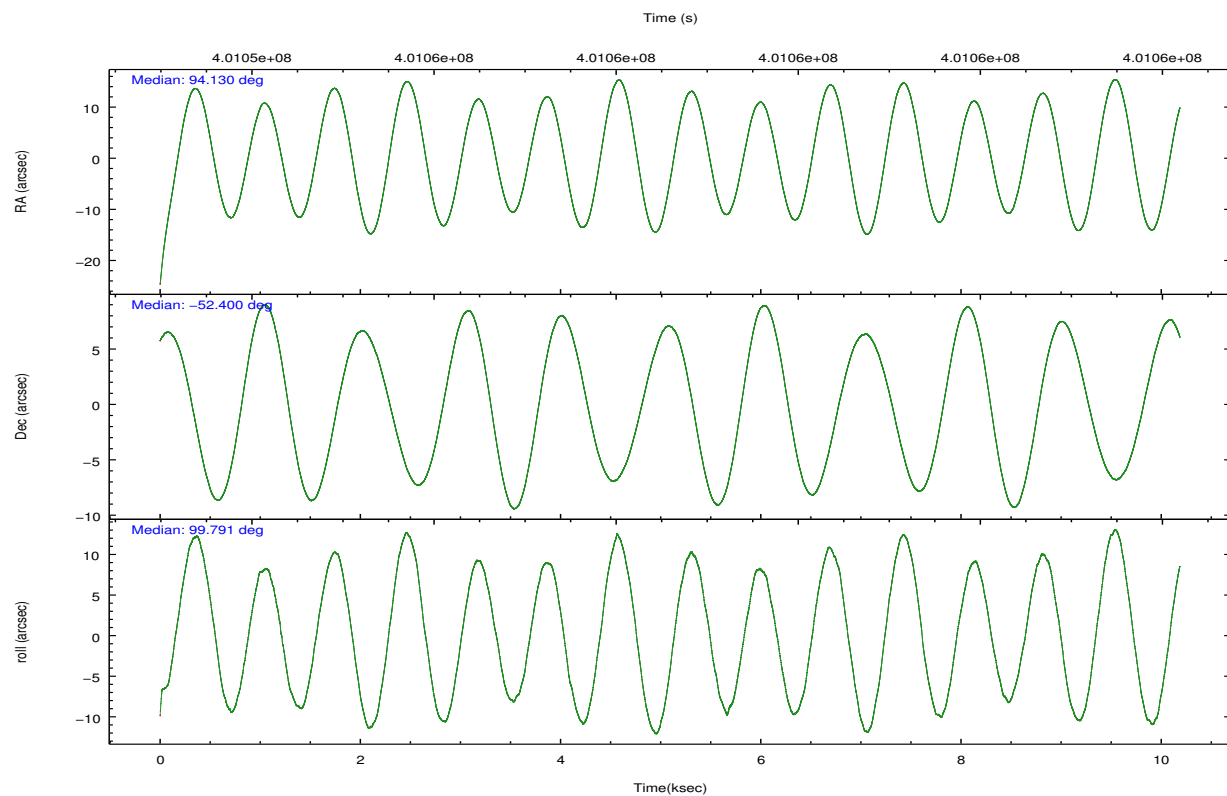
	ccd 0	ccd 1	ccd 2	ccd 3	ccd 6
grade 0 events	3303	2987	2977	3161	2728
	5%	4%	4%	4%	3%
grade 1 events	61	42	49	52	43
	0%	0%	0%	0%	0%
grade 2 events	1922	2056	1861	1779	1831
	2%	3%	2%	2%	2%
grade 3 events	870	900	766	874	839
	1%	1%	1%	1%	1%
grade 4 events	762	867	771	825	848
	1%	1%	1%	1%	1%
grade 5 events	2848	3075	2670	3285	3247
	4%	4%	3%	4%	4%
grade 6 events	1534	1779	1483	1555	1821
	2%	2%	2%	2%	2%
grade 7 events	54398	53214	62241	61453	58742
	82%	81%	85%	84%	83%

2.2 Compared Parameters

Parameter	Planned	Actual	Parameter	Planned	Actual
Instrument	ACIS	ACIS	Obspar format version number	7	7
Detector	ACIS-01236	ACIS-01236	Obspar file type	PREDICTED	ACTUAL
Grating	NONE	NONE	Obspar update status	NONE	UPDATED
Data mode	VFAINT	VFAINT	CCD I0 on	Y	Y
Observation mode	POINTING	POINTING	CCD I1 on	Y	Y
[deg] Pointing RA	94.159439	94.13040584523893	CCD I2 on	Y	Y
[deg] Pointing Dec	-52.420835	-52.39975512954733	CCD I3 on	Y	Y
[deg] Pointing Roll	99.613418	99.79911062219372	CCD S0 on	N	N
[mm] SIM focus pos	-0.782348	-0.7809083437167272	CCD S1 on	N	N
[mm] SIM defocus	0	0.001439871863259334	CCD S2 on	O1	Y
[mm] SIM translation stage pos	-225.792463	-225.785514080088	CCD S3 on	N	N
[mm] SIM translation stage offset	-7.8	-7.806938922841681	CCD S4 on	N	N
[s] Observation start time (MET)	401053692.184000	401052638.26269	CCD S5 on	N	N
Observation start date	2010-09-16T19:47:06	2010-09-16T19:30:38	Number of optional ACIS chips dropped	0	0
[s] Observation end time (MET)	401063692.184000	401064584.6383	On-chip summing requested	N	N
Observation end date	2010-09-16T22:33:46	2010-09-16T22:49:44	Subarray requested	NONE	NONE
Read mode	TIMED	TIMED	Alternating exposures requested	N	N
			[s] Primary exposure time	0.000000	3.1

2.3 Aspect



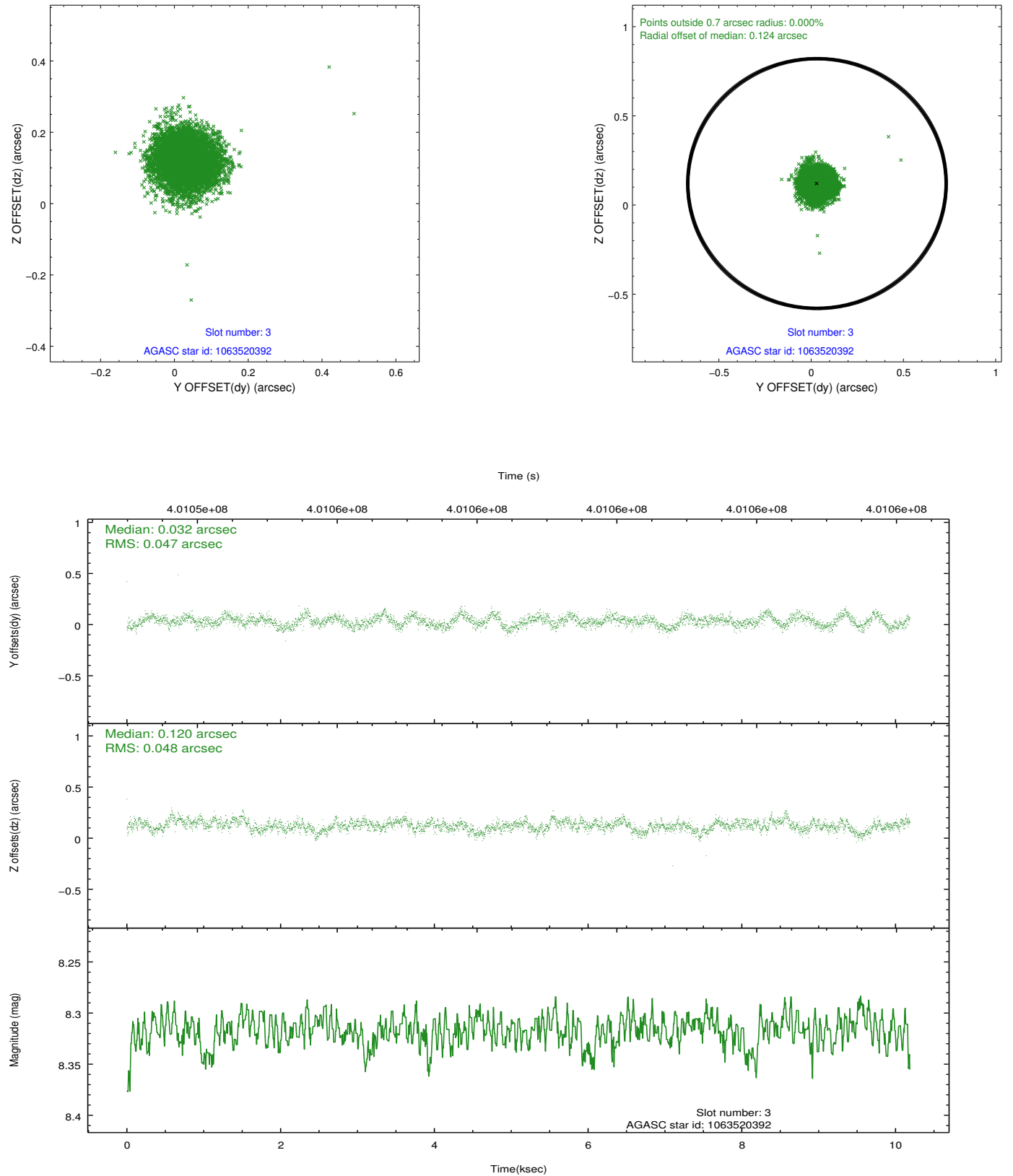


Slot Statistics

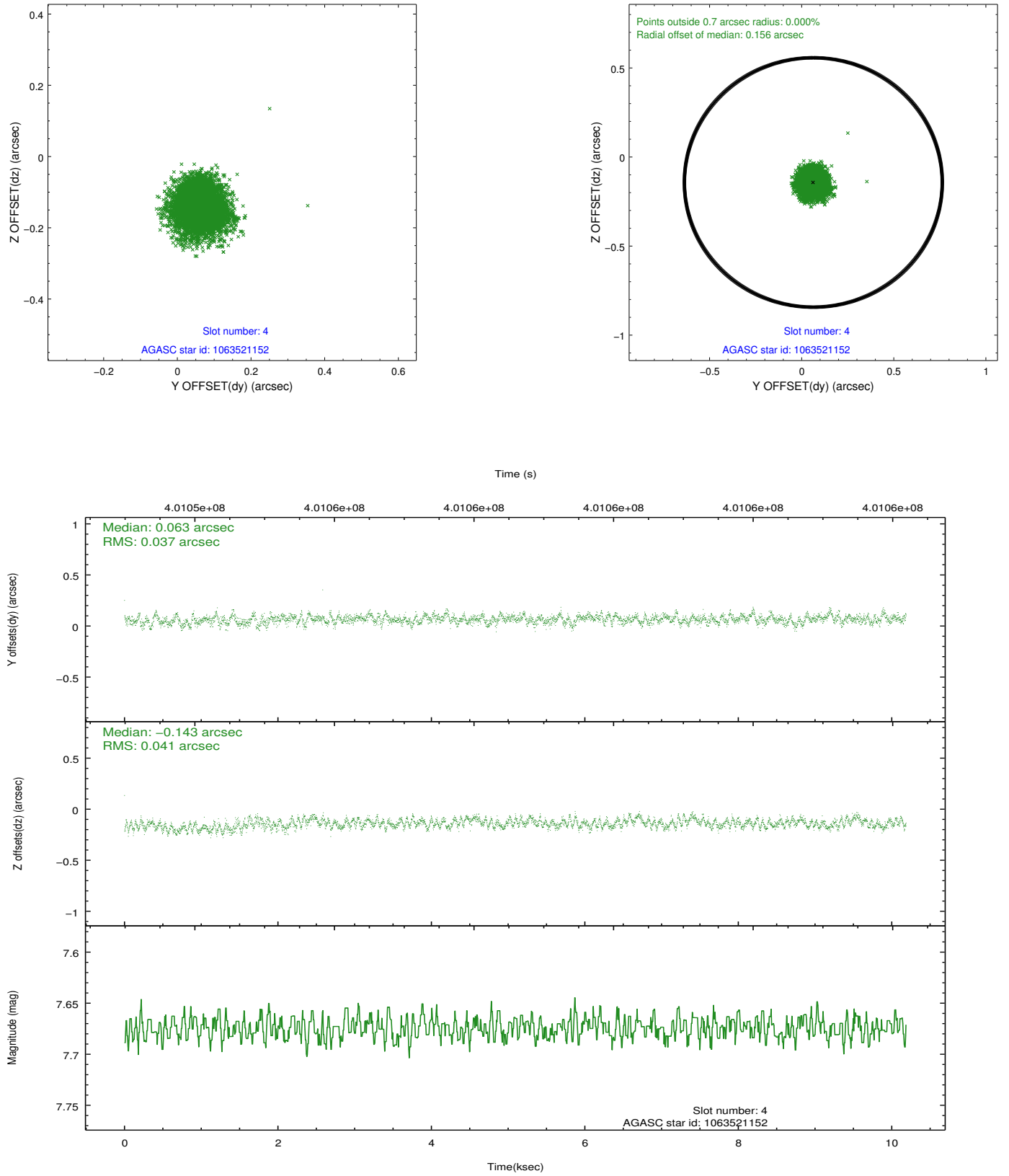
slot	status	id	mag	n_pts	med_dy	med_dz	dr1	dr2	ra	dec	mean_y	mean_z
0	FID	ACIS-I-1	6.98	2485	0.094	-0.045	0.008	0.015	0.000000	0.000000	924.48	-1001.82
1	FID	ACIS-I-5	6.98	2485	-0.264	0.083	0.008	0.016	0.000000	0.000000	-1823.74	895.41
2	FID	ACIS-I-6	7.00	2485	0.078	0.033	0.007	0.012	0.000000	0.000000	389.39	1540.50
3	GUIDE	1063520392	8.32	4970	0.032	0.120	0.072	0.111	94.980750	-52.145146	665.72	-1952.89
4	GUIDE	1063521152	7.67	4970	0.063	-0.143	0.060	0.095	92.979645	-51.913324	2217.86	2281.21
5	GUIDE	1063522888	6.91	4970	-0.029	-0.053	0.068	0.116	95.148149	-52.069842	866.52	-2365.32
6	GUIDE	1063522968	8.75	4967	-0.255	-0.087	0.065	0.107	93.390451	-51.968944	1879.64	1411.01
7	GUIDE	1118570624	7.52	4969	0.188	0.166	0.064	0.104	95.354935	-52.662457	-1314.07	-2424.48

2.4 Star Slots

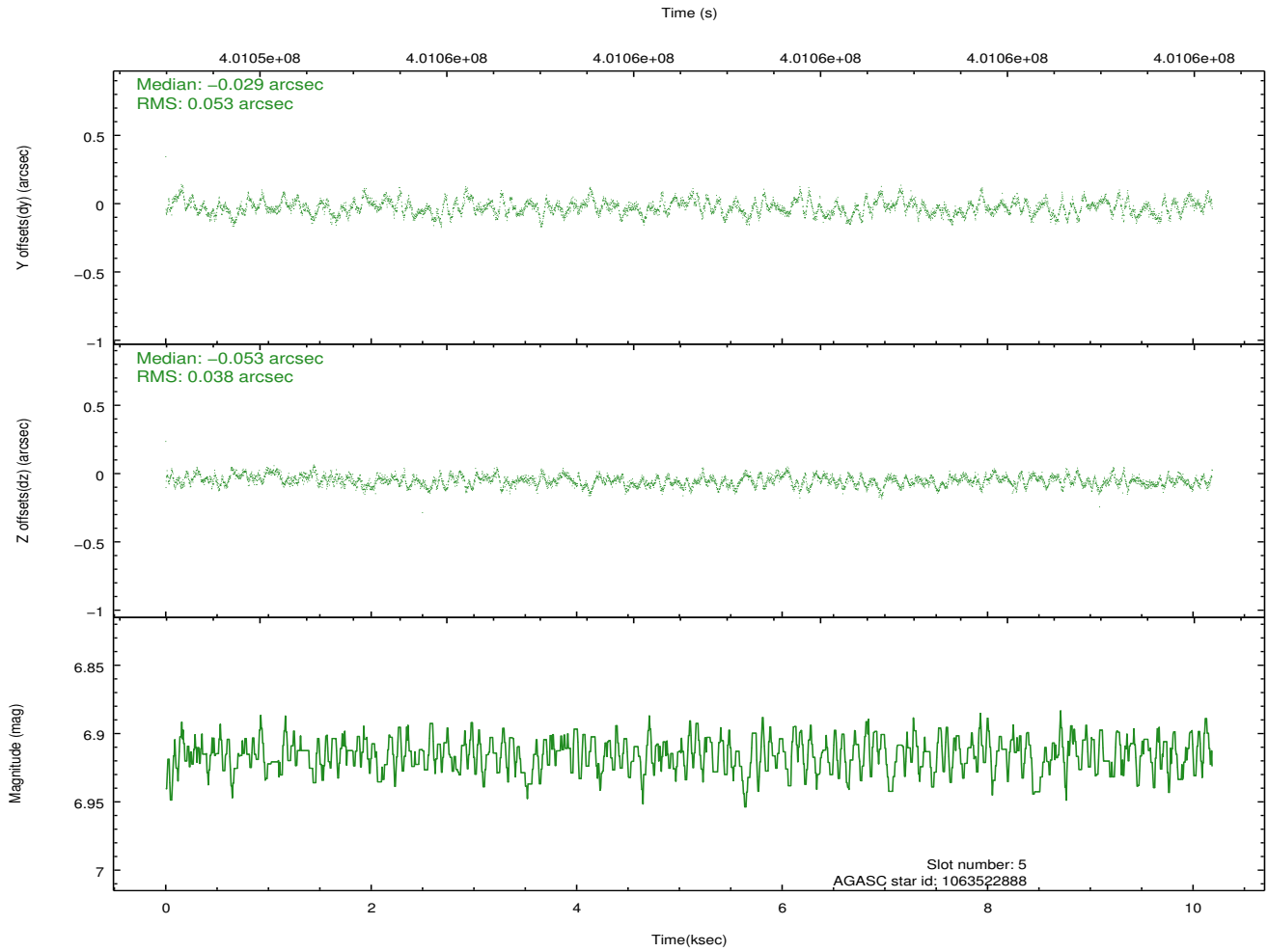
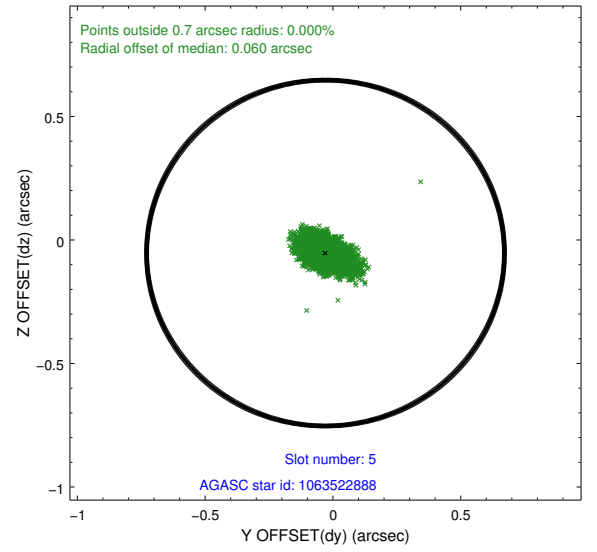
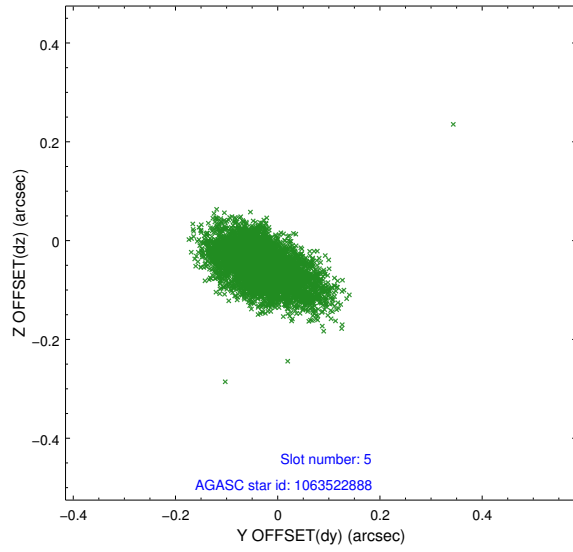
2.4.1 Slot 3



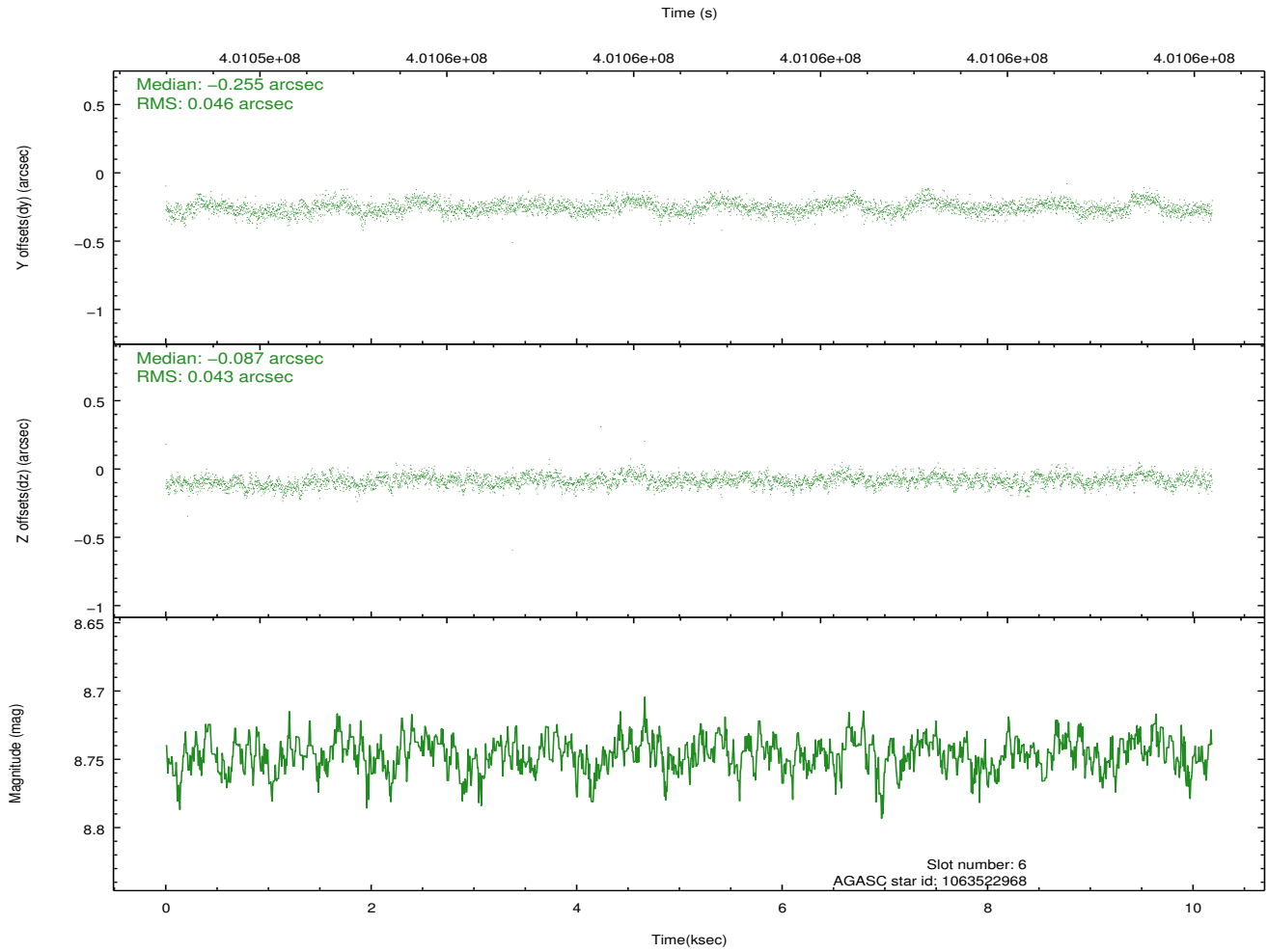
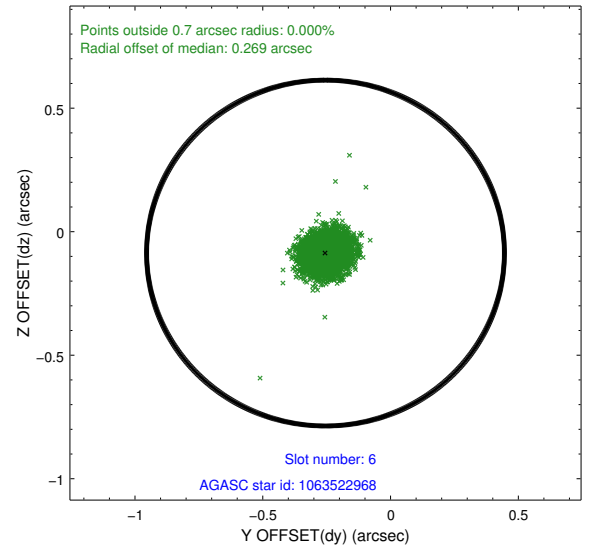
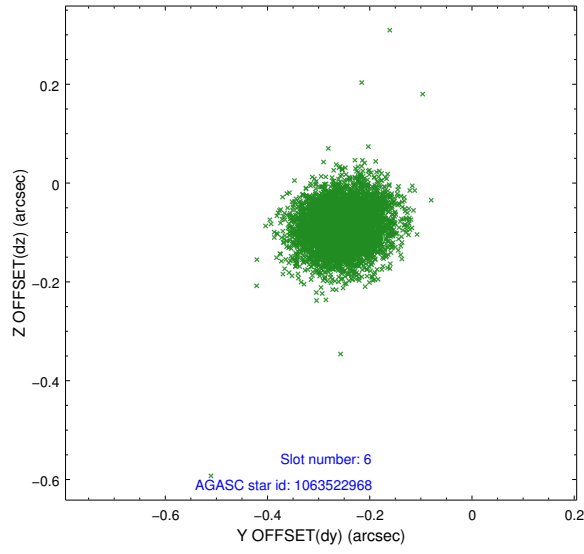
2.4.2 Slot 4



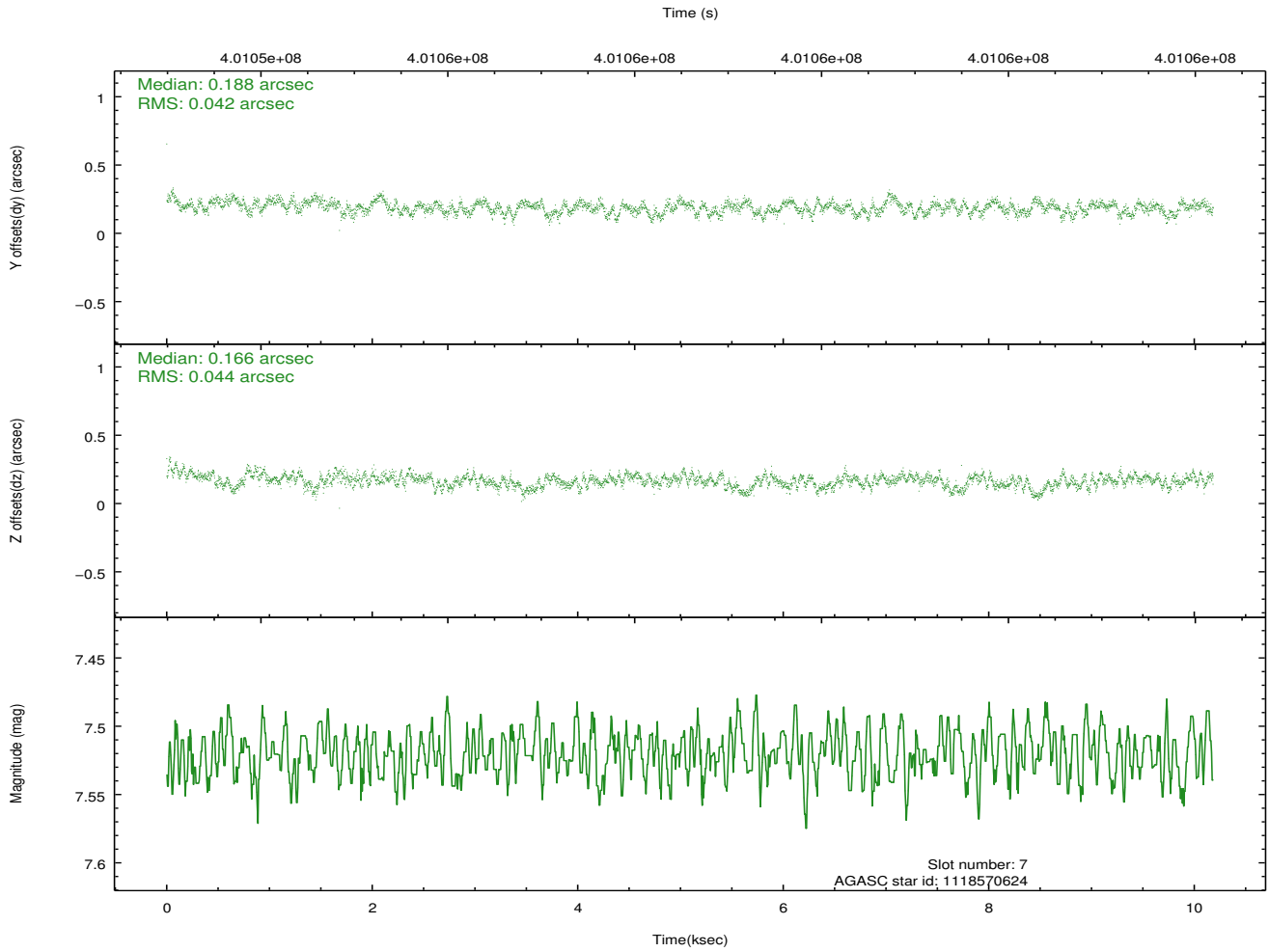
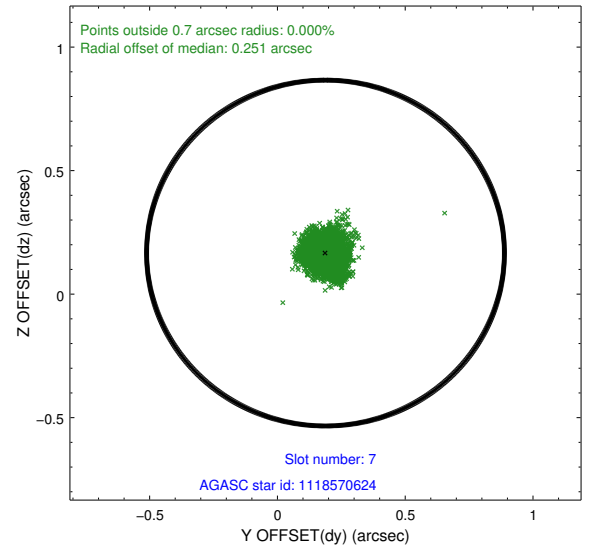
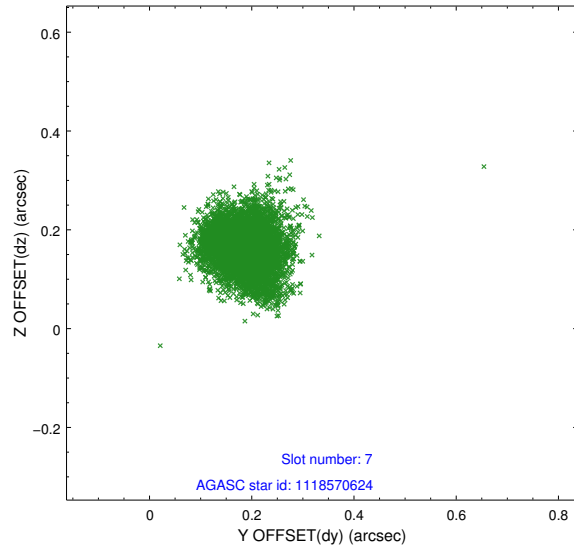
2.4.3 Slot 5



2.4.4 Slot 6

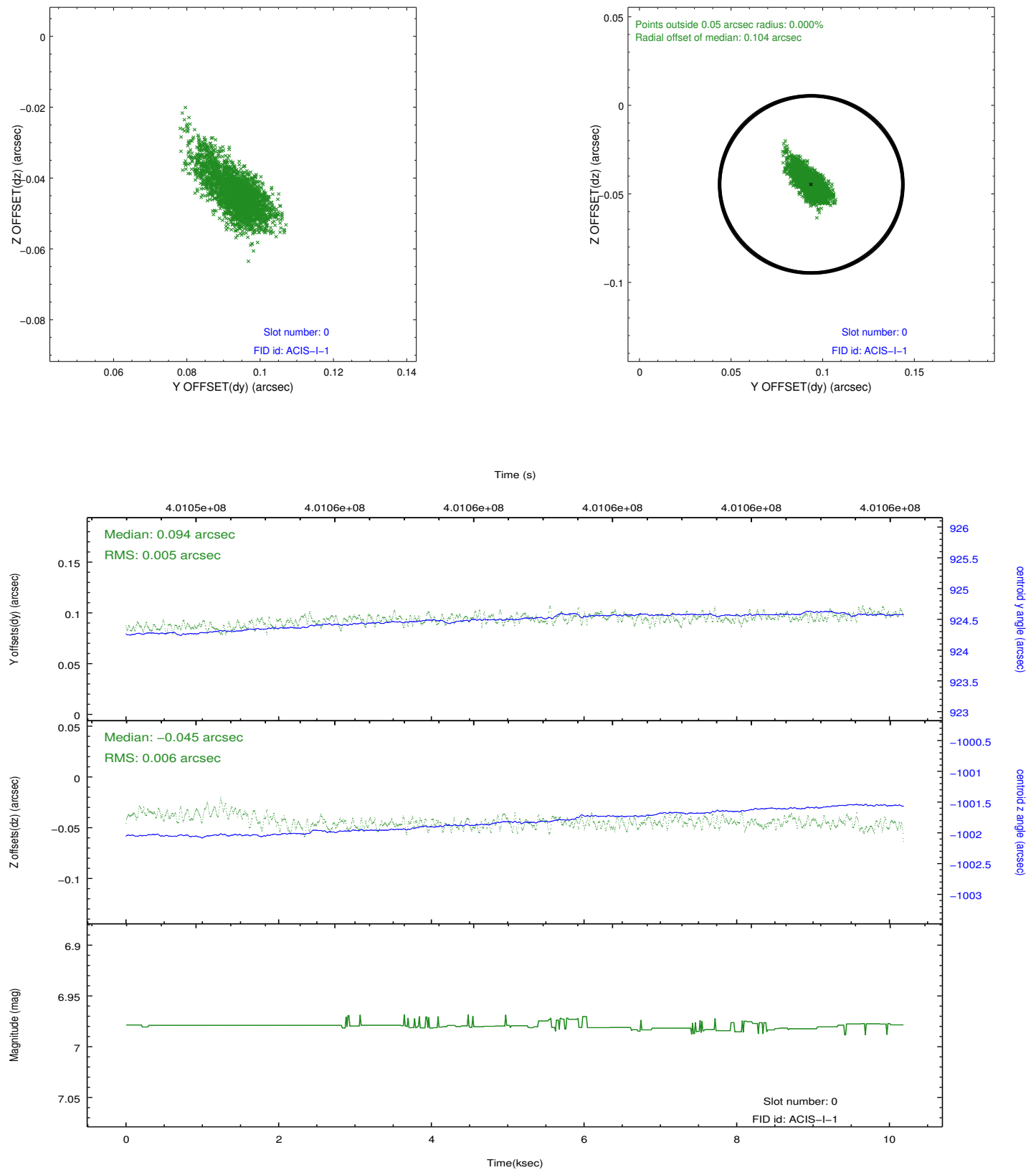


2.4.5 Slot 7

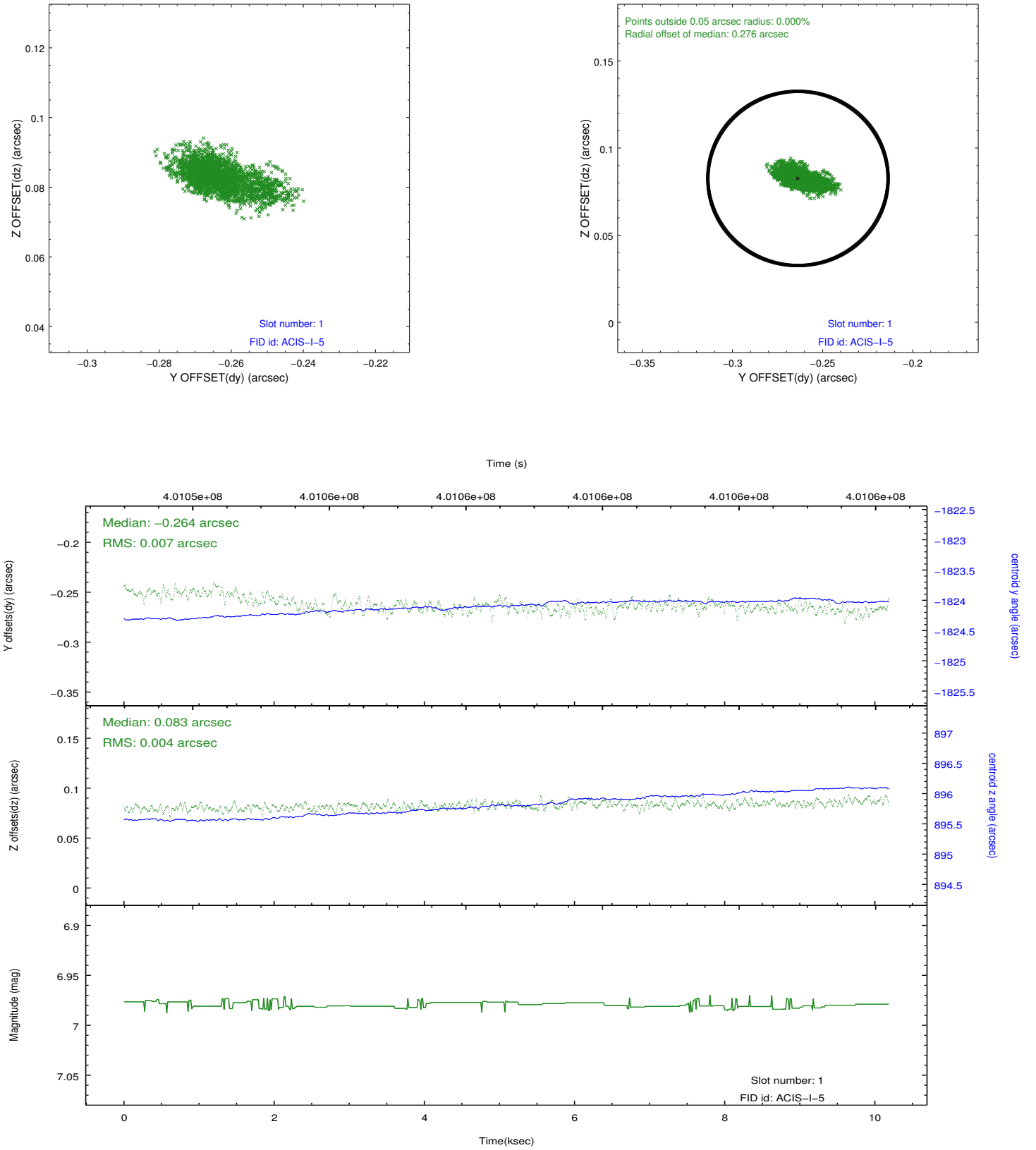


2.5 FID Slots

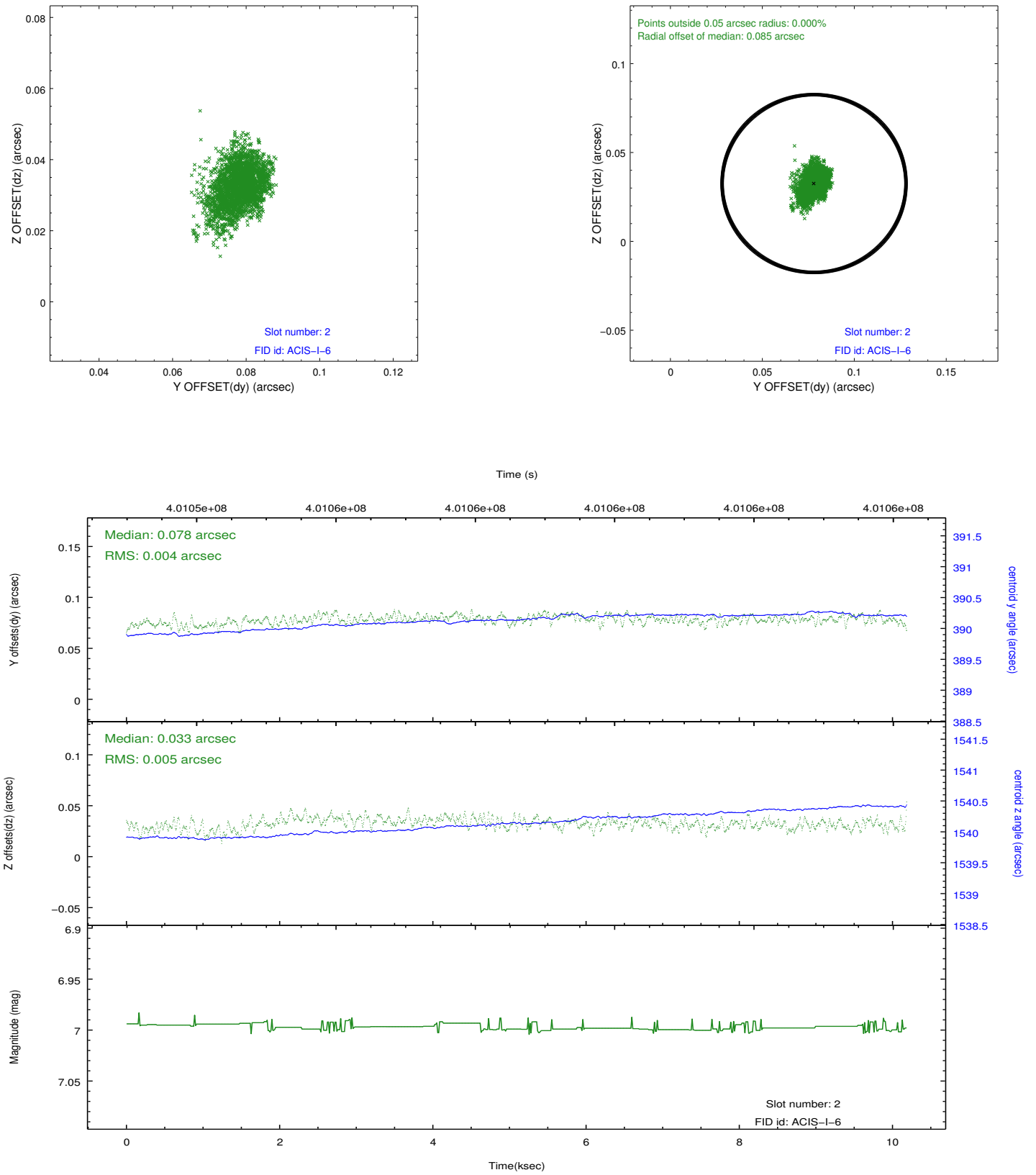
2.5.1 Slot 0



2.5.2 Slot 1



2.5.3 Slot 2



A Summary

A.1 Status

V&V Scientist	Jen Lauer
V&V Date (YYYY-MM-DD)	2012.07.11
V&V Edition	1
V&V Disposition and Status	OK
V&V Charge Time	10.052220154464

A.2 Comments