

V&V Reference Report

L2 ASCDS Version : 8.4.5

Observation 12197 - L2 Version 3
Chandra X-Ray Center

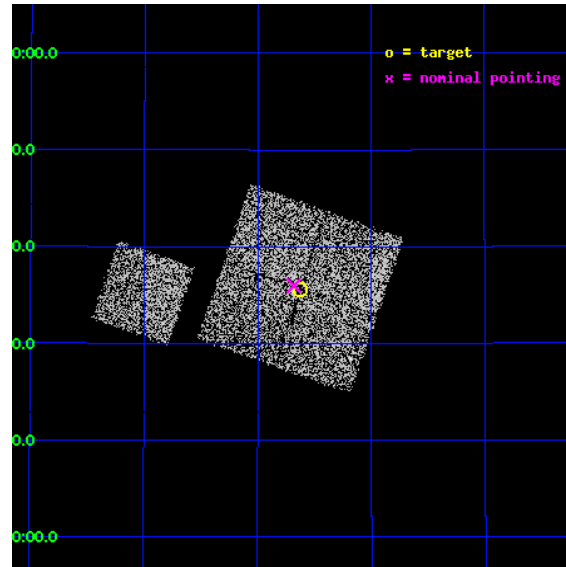
L2 Processing Date : Jul 2 2012

Contents

1	Front	2
2	OBI	3
2.1	OBI	3
2.1.1	Images	3
2.1.2	Bias	3
2.1.3	Parameters	4
2.1.4	Events	4
2.2	Compared Parameters	5
2.3	Aspect	6
2.4	Star Slots	9
2.4.1	Slot 3	9
2.4.2	Slot 4	10
2.4.3	Slot 5	11
2.4.4	Slot 6	12
2.4.5	Slot 7	13
2.5	FID Slots	14
2.5.1	Slot 0	14
2.5.2	Slot 1	15
2.5.3	Slot 2	16
A	Summary	17
A.1	Status	17
A.2	Comments	17

1 Front

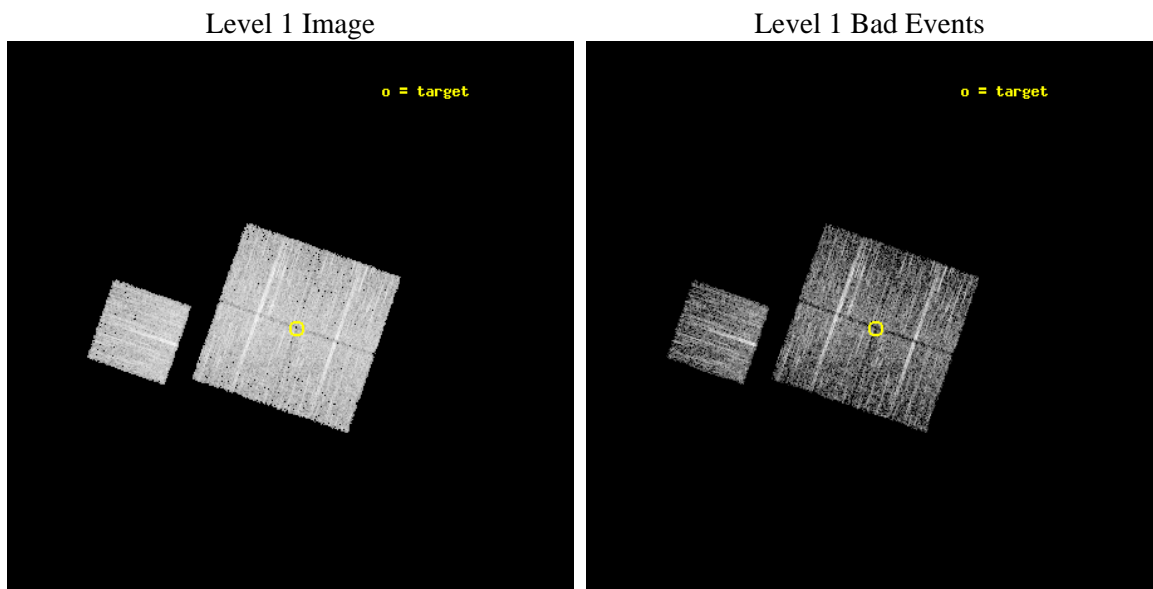
seq_num	800963	Sequence number
obs_id	12197	Observation id
title	The Chandra Cluster Outskirts Snapshot Survey	Proposal title
observer	Professor Gordon Garmire	Principal investigator
object	A1914_Field1	Source name
dtcycle	0	
cycle	P	events from which exps? Prim/Second/Both
ra_targ	216.40744	Observer's specified target RA [deg]
dec_targ	37.593502	Observer's specified target Dec [deg]
ra_nom	216.42031415484	Nominal RA [deg]
dec_nom	37.599425499983	Nominal Dec [deg]
roll_nom	289.18063773562	Nominal Roll [deg]
revision	3	Processing version of data
ontime	4775.769177556	Sum of GTIs [s]
livetime	4713.3702373811	Livetime [s]
ontime0	4775.7281375527	Sum of GTIs [s]
ontime1	4775.769177556	Sum of GTIs [s]
ontime2	4775.8102175593	Sum of GTIs [s]
ontime3	4775.8512575626	Sum of GTIs [s]
ontime6	4775.6870975494	Sum of GTIs [s]
l2events	16468	Number of level 2 events



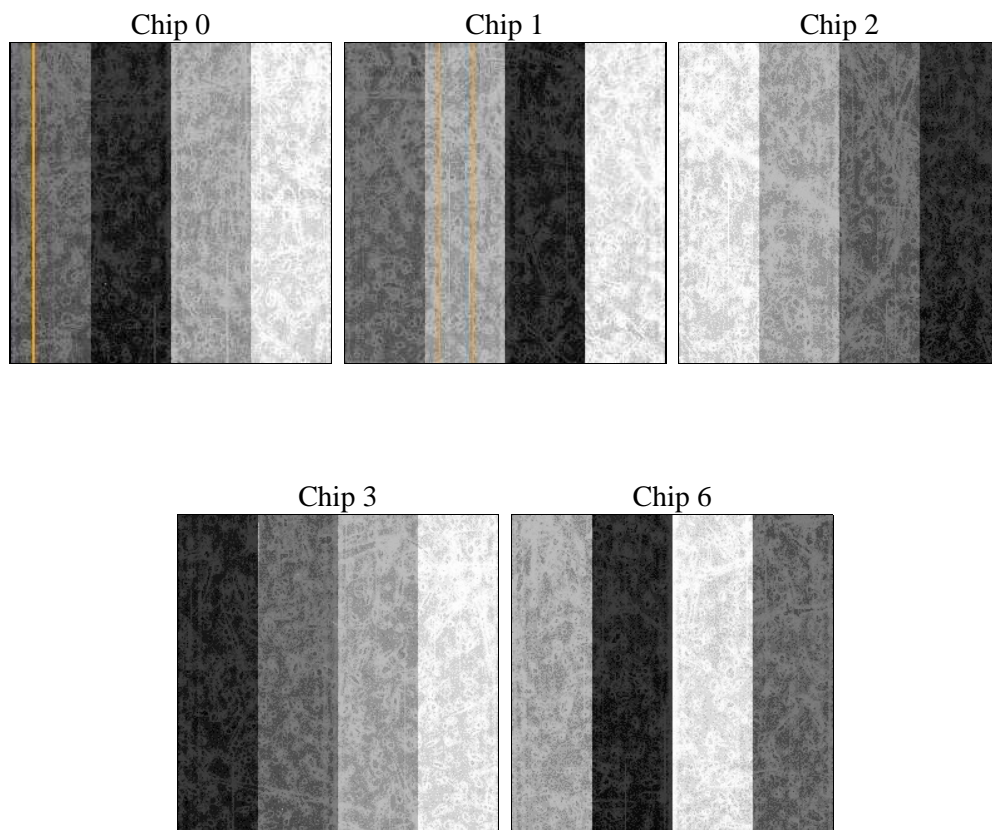
2 OBI

2.1 OBI

2.1.1 Images



2.1.2 Bias



2.1.3 Parameters

obi_num	0	Obi number	sched_exp_time	5000.000000	[s] Scheduled observation exposure time
ascdsver	8.4.5	Processing system revision	ontime	4775.769177556	Sum of GTIs [s]
caldsver	4.5.0	 	ontime0	4775.7281375527	Sum of GTIs [s]
date	2012-07-02T19:15:50	Date and time of file creation	ontime1	4775.769177556	Sum of GTIs [s]
revision	3	Processing version of data	ontime2	4775.8102175593	Sum of GTIs [s]
			ontime3	4775.8512575626	Sum of GTIs [s]
			ontime6	4775.6870975494	Sum of GTIs [s]
			l1events	172552	Number of level 1 events

2.1.4 Events

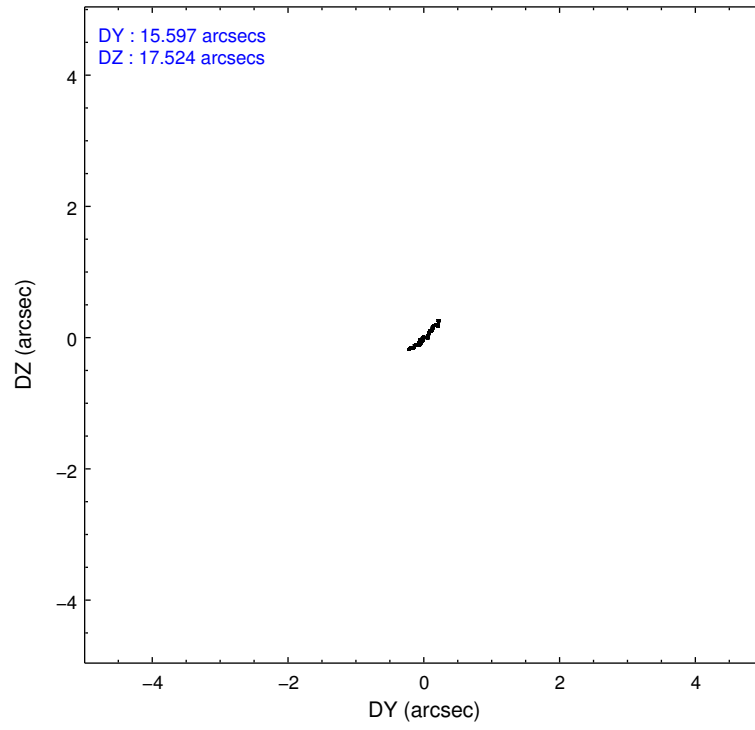
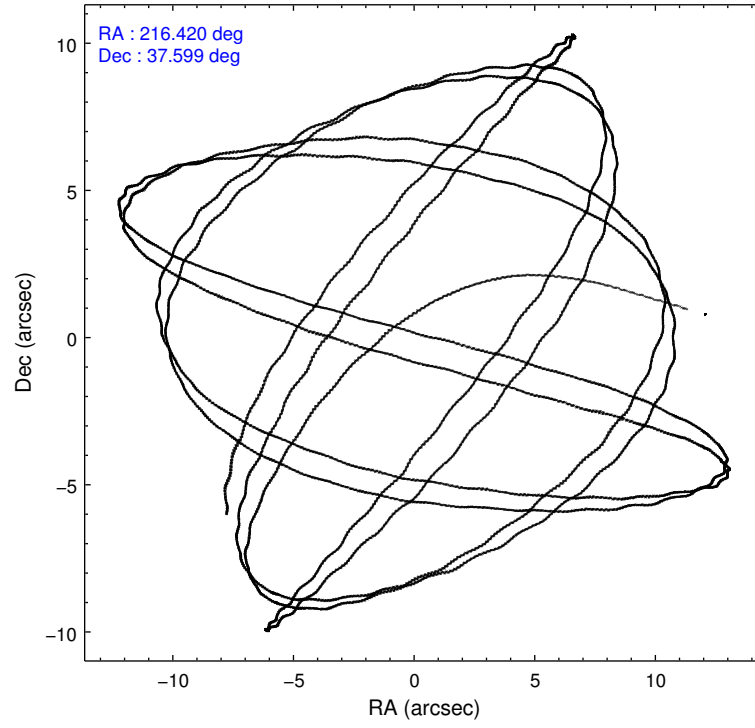
	ccd 0	ccd 1	ccd 2	ccd 3	ccd 6
level 1 events	31325	34676	35462	35047	36042
rejected events	27331	30364	31803	31305	32127
rejected %	87%	87%	89%	89%	89%

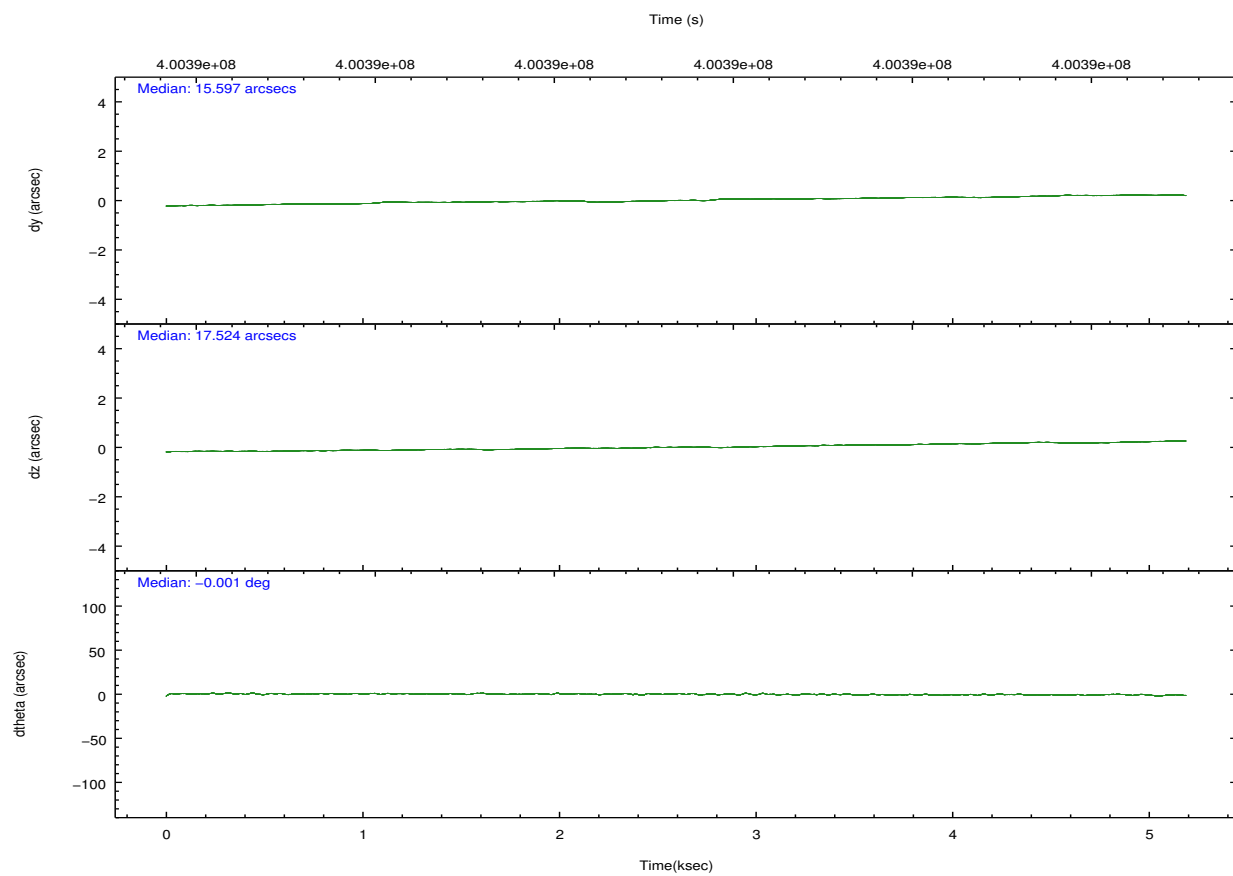
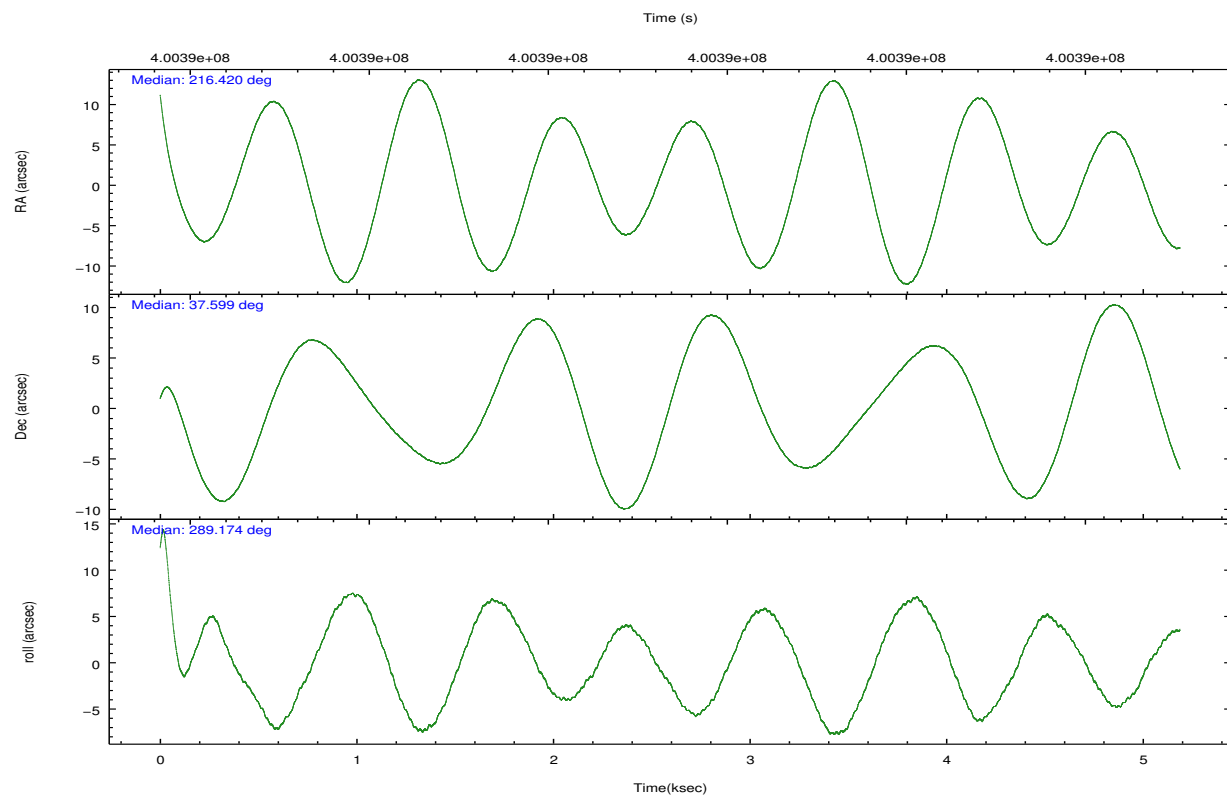
	ccd 0	ccd 1	ccd 2	ccd 3	ccd 6
grade 0 events	1372	1517	1326	1338	1368
	4%	4%	3%	3%	3%
grade 1 events	24	14	19	25	13
	0%	0%	0%	0%	0%
grade 2 events	972	1032	869	853	856
	3%	2%	2%	2%	2%
grade 3 events	442	423	391	387	424
	1%	1%	1%	1%	1%
grade 4 events	395	430	368	439	397
	1%	1%	1%	1%	1%
grade 5 events	1526	1593	1308	1660	1601
	4%	4%	3%	4%	4%
grade 6 events	822	917	710	732	875
	2%	2%	2%	2%	2%
grade 7 events	25772	28750	30471	29613	30508
	82%	82%	85%	84%	84%

2.2 Compared Parameters

Parameter	Planned	Actual	Parameter	Planned	Actual
Instrument	ACIS	ACIS	Obspar format version number	7	7
Detector	ACIS-01236	ACIS-01236	Obspar file type	PREDICTED	ACTUAL
Grating	NONE	NONE	Obspar update status	NONE	UPDATED
Data mode	VFAINT	VFAINT	CCD I0 on	Y	Y
Observation mode	POINTING	POINTING	CCD I1 on	Y	Y
[deg] Pointing RA	216.393976	216.4203141548412	CCD I2 on	Y	Y
[deg] Pointing Dec	37.617331	37.59942549998254	CCD I3 on	Y	Y
[deg] Pointing Roll	288.987979	289.1806377356247	CCD S0 on	N	N
[mm] SIM focus pos	-0.782348	-0.7809083437167272	CCD S1 on	N	N
[mm] SIM defocus	0	0.001439871863259334	CCD S2 on	O1	Y
[mm] SIM translation stage pos	-233.592463	-233.5874344608287	CCD S3 on	N	N
[mm] SIM translation stage offset	0	-0.005018542100998502	CCD S4 on	N	N
[s] Observation start time (MET)	400389274.184000	400388457.19112	CCD S5 on	N	N
Observation start date	2010-09-09T03:13:28	2010-09-09T03:00:57	Number of optional ACIS chips dropped	0	0
[s] Observation end time (MET)	400394274.184000	400394729.16645	On-chip summing requested	N	N
Observation end date	2010-09-09T04:36:48	2010-09-09T04:45:29	Subarray requested	NONE	NONE
Read mode	TIMED	TIMED	Alternating exposures requested	N	N
			[s] Primary exposure time	0.000000	3.1

2.3 Aspect



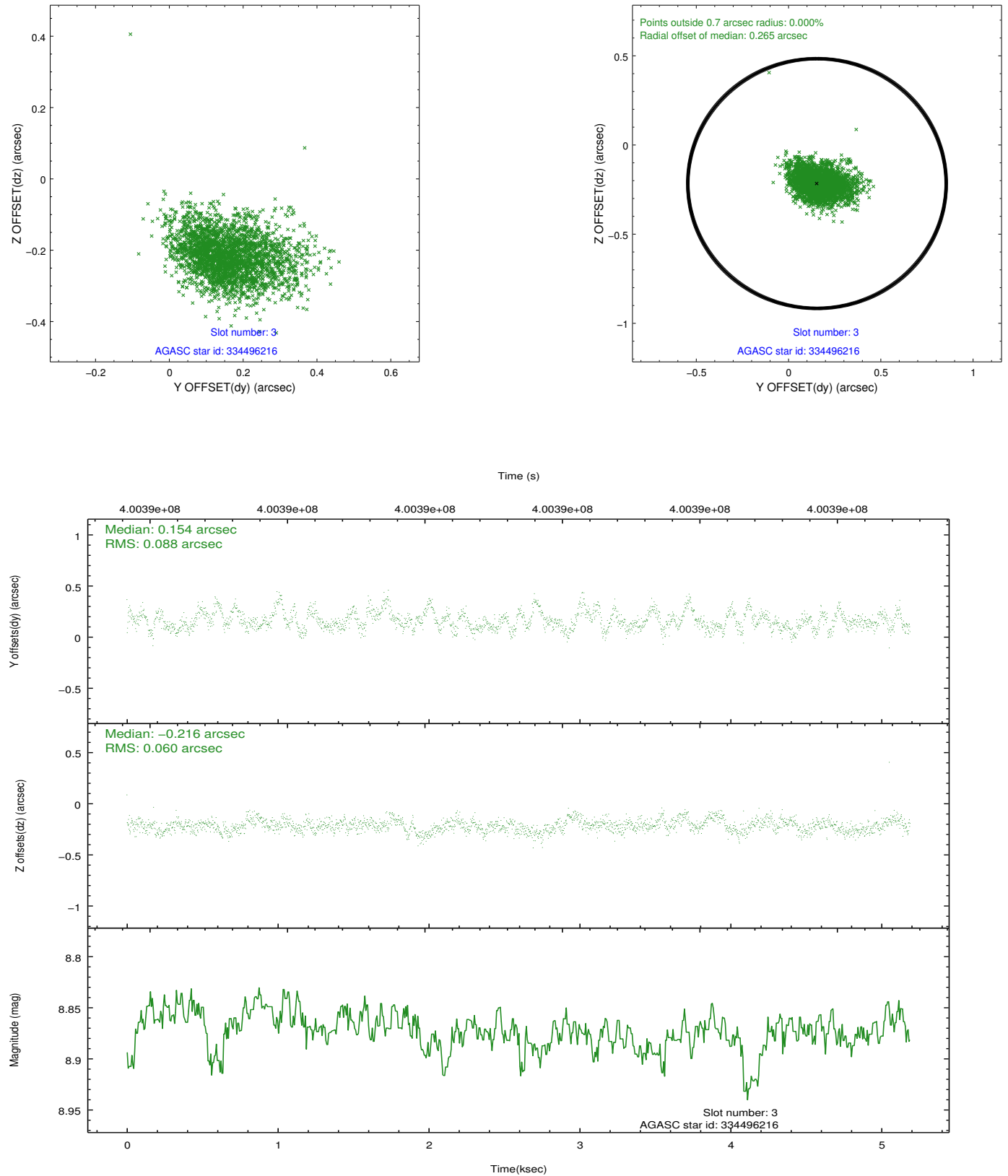


Slot Statistics

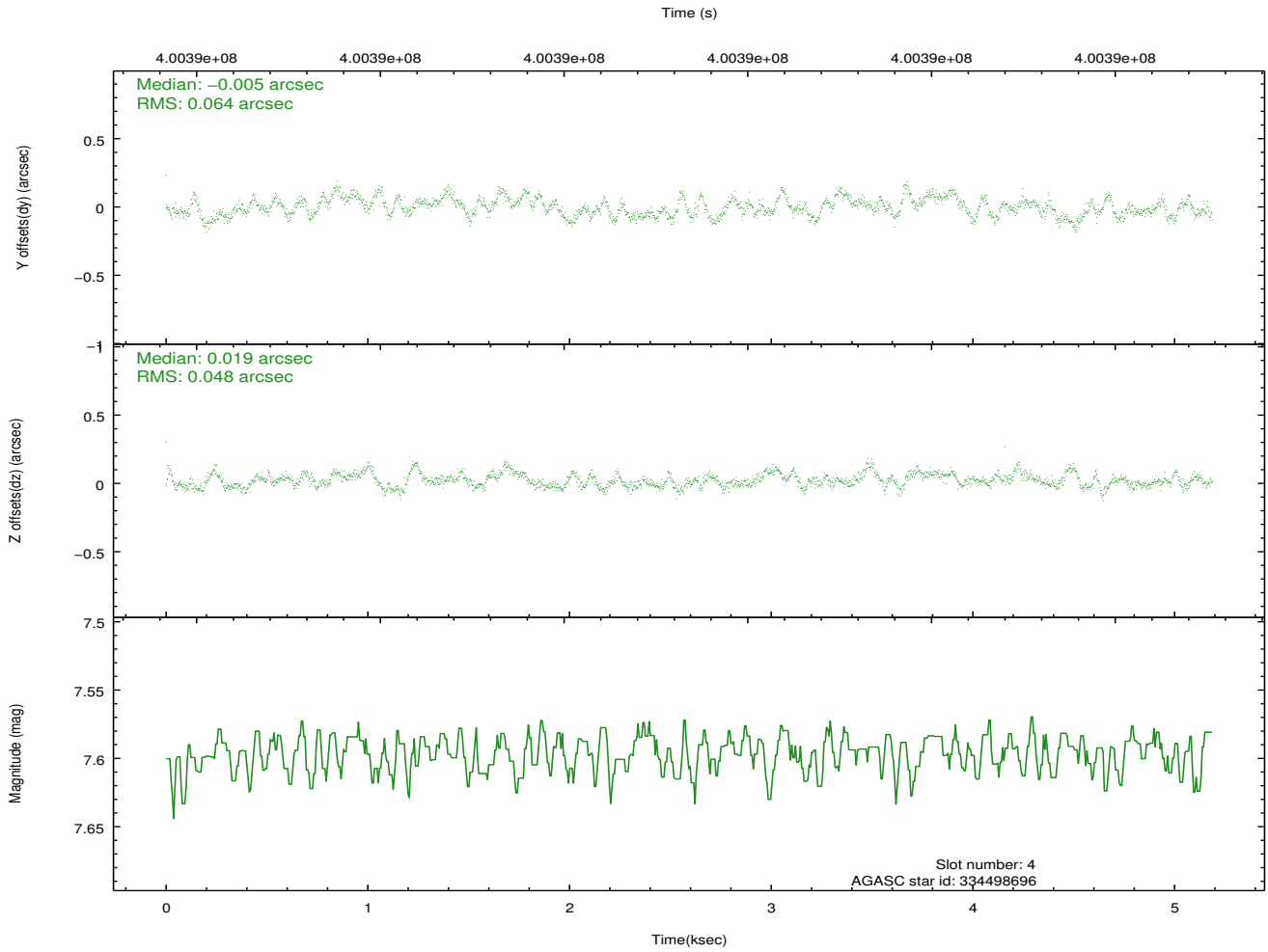
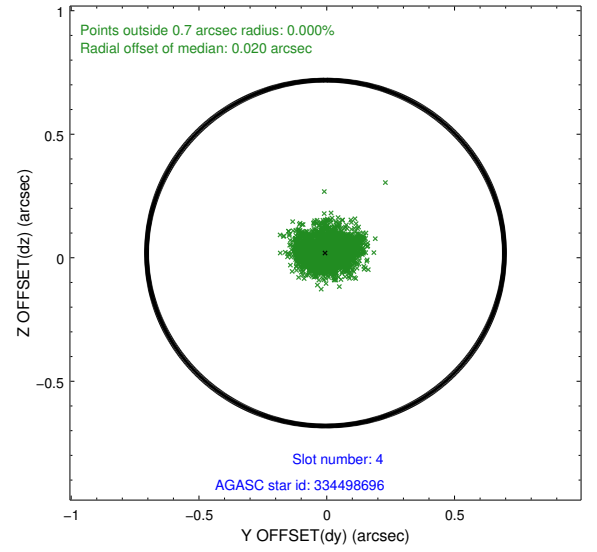
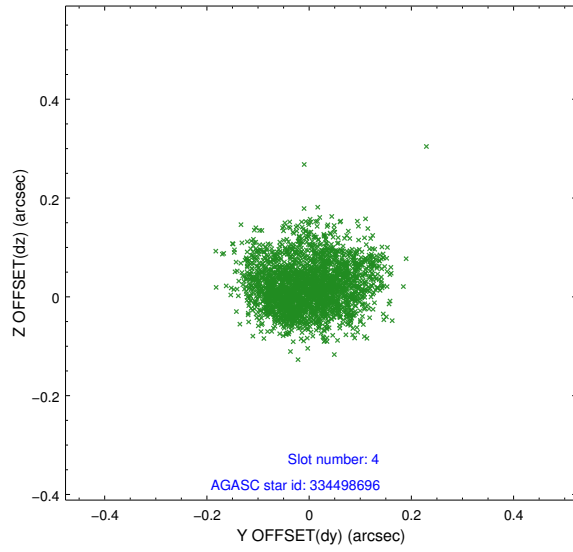
slot	status	id	mag	n_pts	med_dy	med_dz	dr1	dr2	ra	dec	mean_y	mean_z
0	FID	ACIS-I-1	7.01	1266	0.062	-0.015	0.016	0.033	0.000000	0.000000	923.88	-841.22
1	FID	ACIS-I-5	7.01	1265	-0.220	0.066	0.010	0.019	0.000000	0.000000	-1823.84	1055.78
2	FID	ACIS-I-6	7.02	1266	0.068	0.018	0.011	0.018	0.000000	0.000000	388.18	1701.53
3	GUIDE	334496216	8.87	2531	0.154	-0.216	0.109	0.193	215.852753	36.859565	2068.91	-2359.99
4	GUIDE	334498696	7.60	2531	-0.005	0.019	0.085	0.135	215.863981	37.206551	900.37	-1917.95
5	GUIDE	397807608	10.28	2526	0.029	0.194	0.217	0.330	215.666147	37.953309	-1822.66	-1557.90
6	GUIDE	397808560	9.85	2530	0.059	-0.004	0.159	0.247	216.564463	37.977903	-1070.63	879.02
7	GUIDE	397943760	7.94	2462	-0.255	0.006	0.074	0.119	217.039857	37.556695	799.45	1674.75

2.4 Star Slots

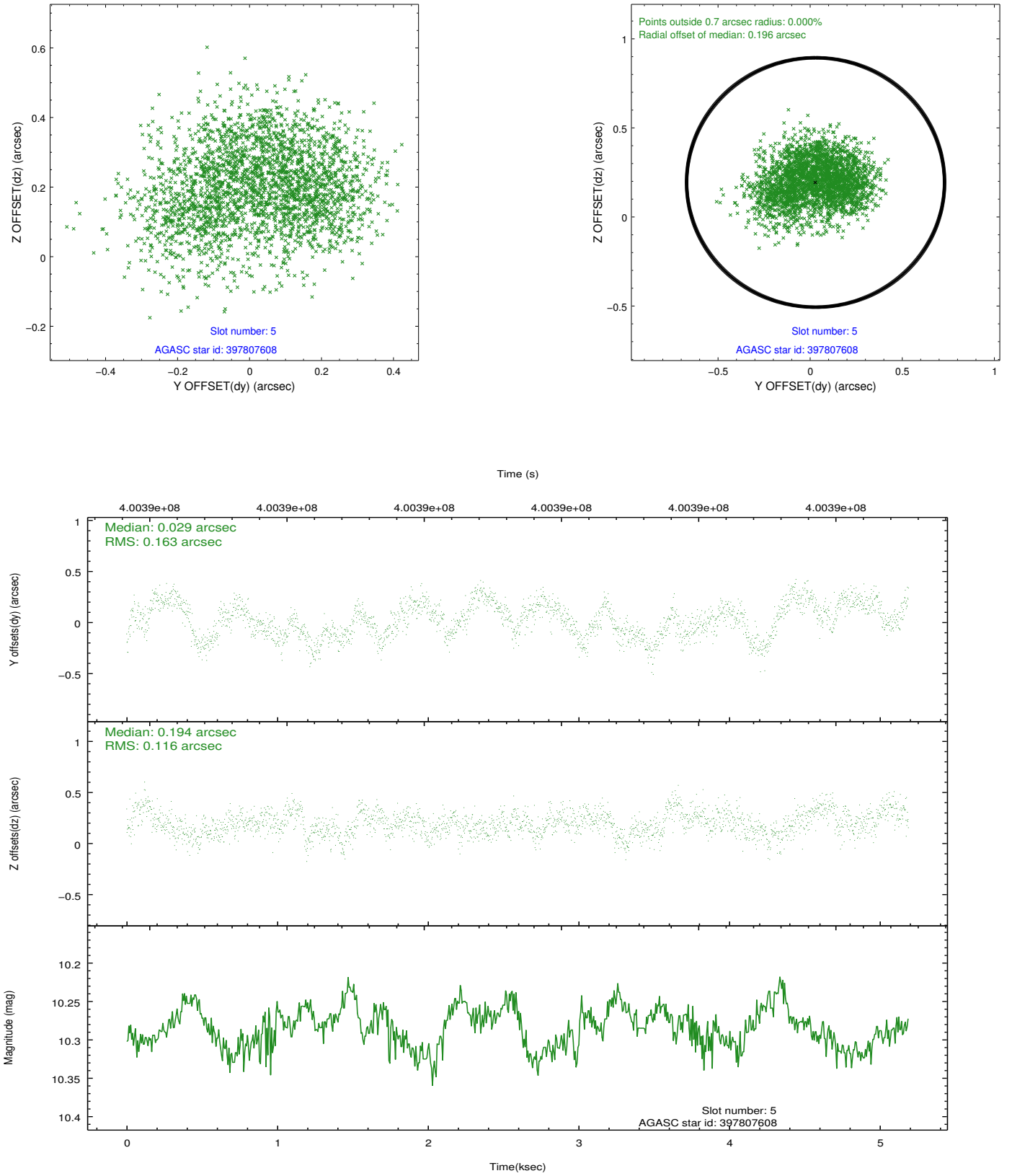
2.4.1 Slot 3



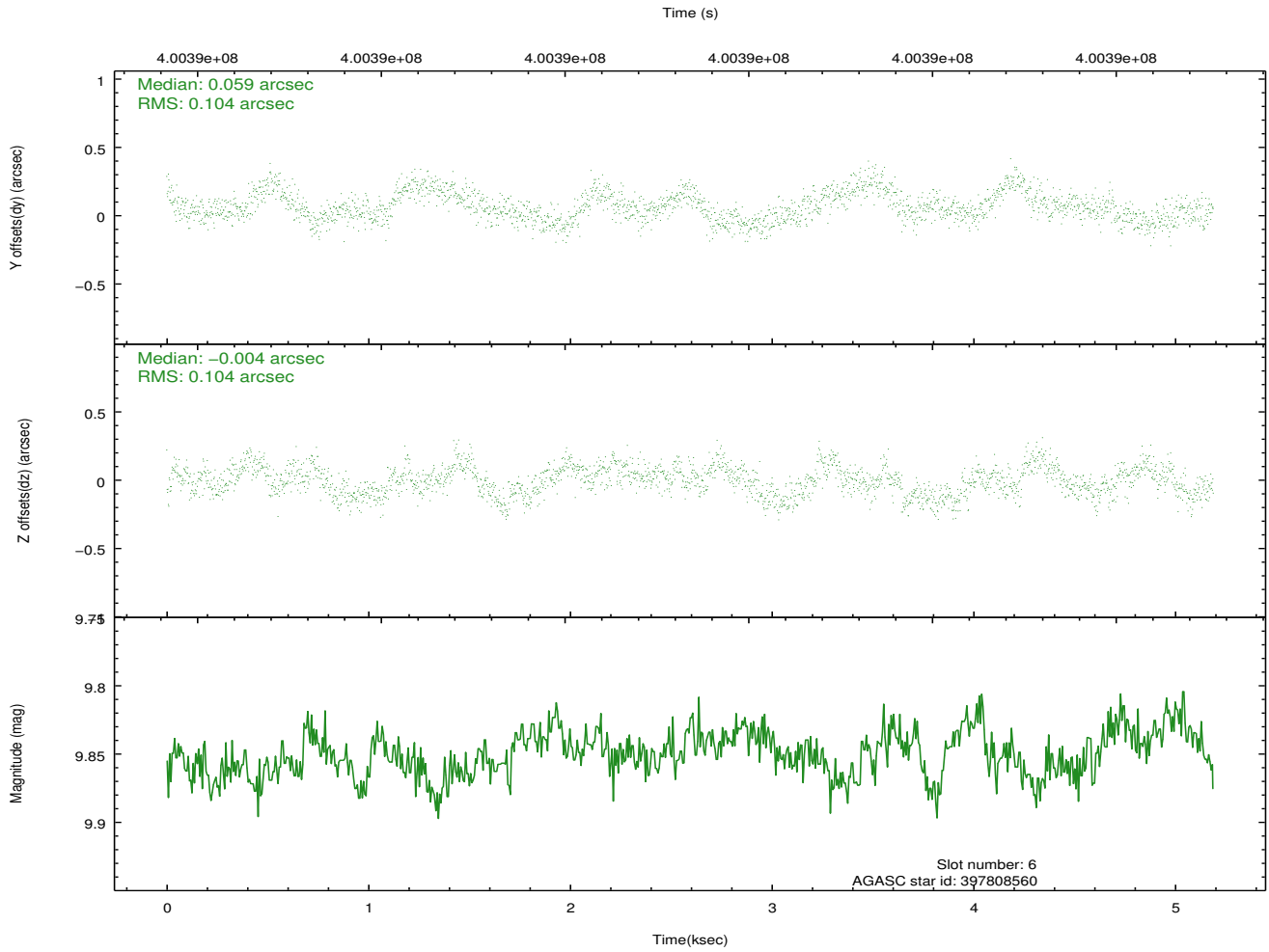
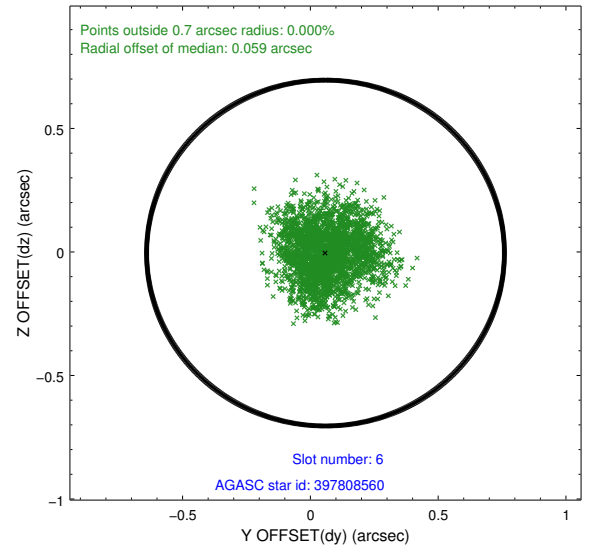
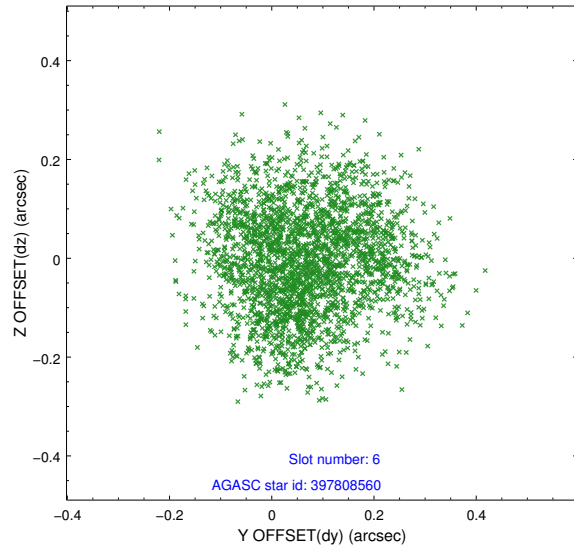
2.4.2 Slot 4



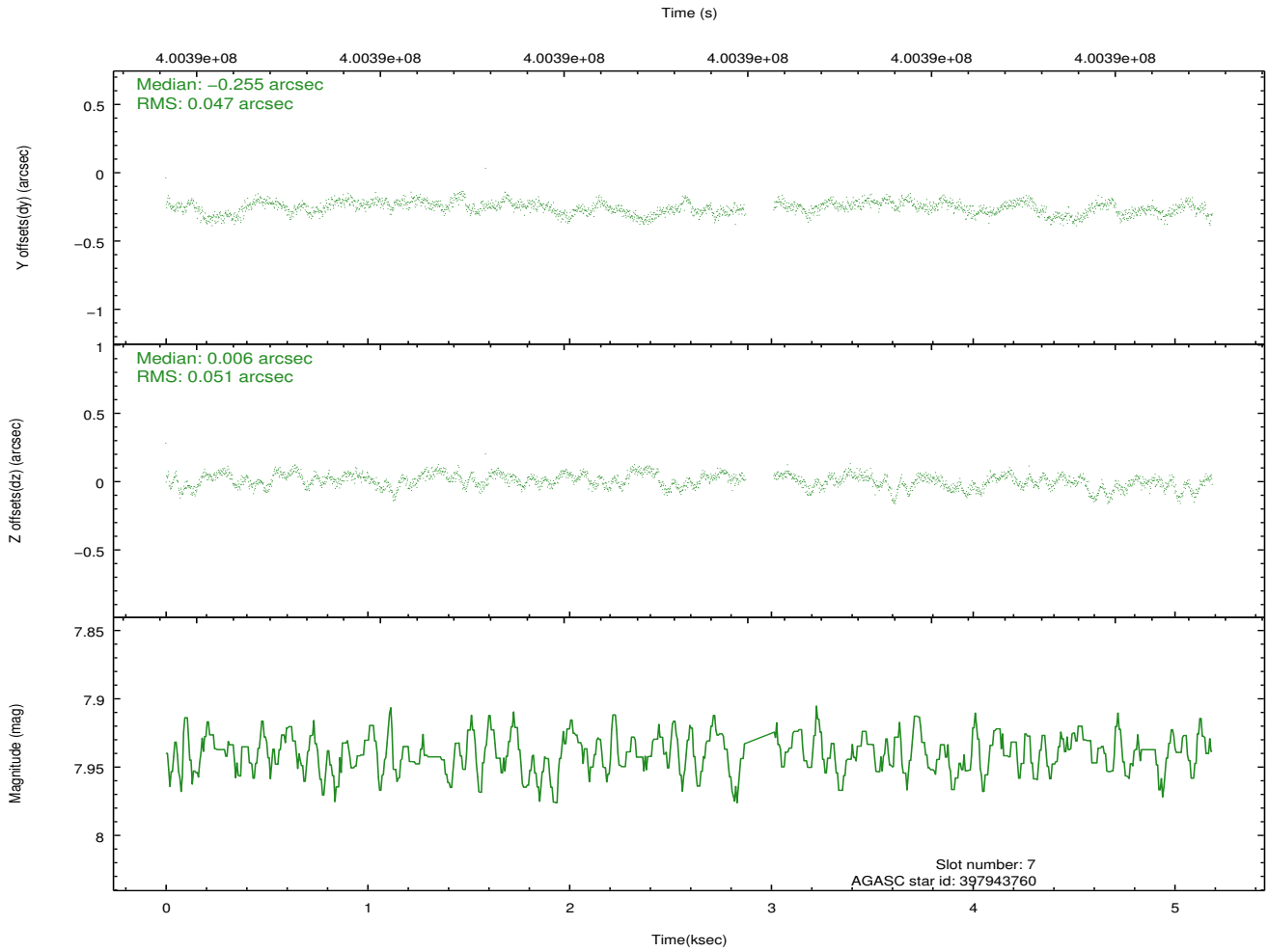
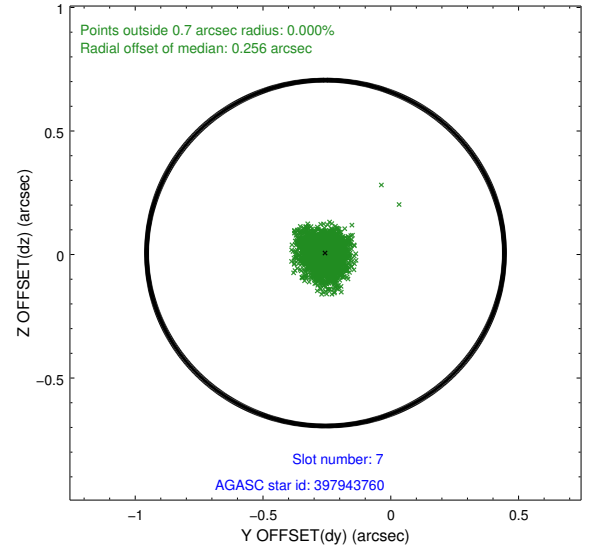
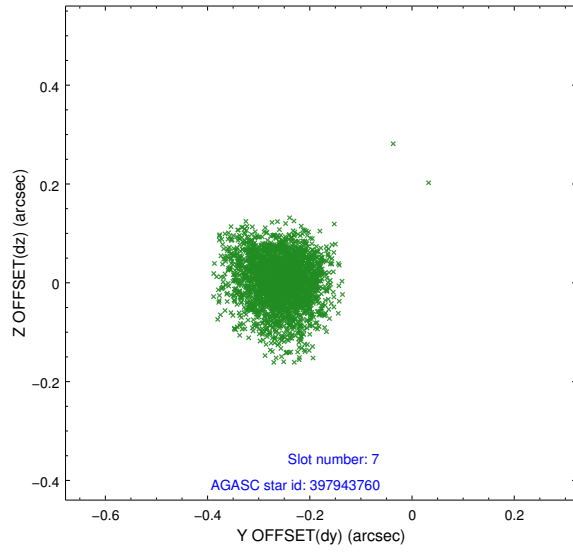
2.4.3 Slot 5



2.4.4 Slot 6

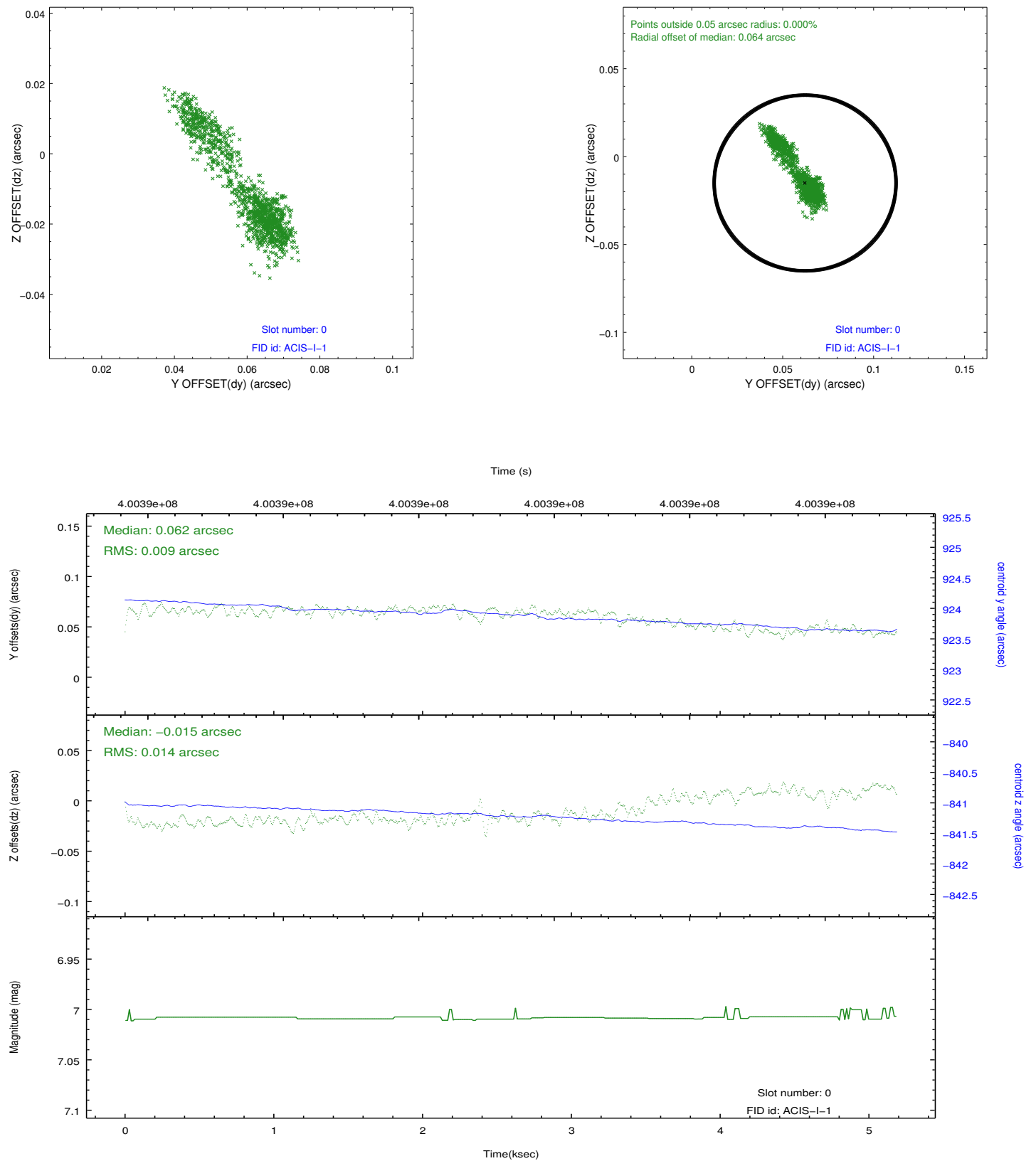


2.4.5 Slot 7

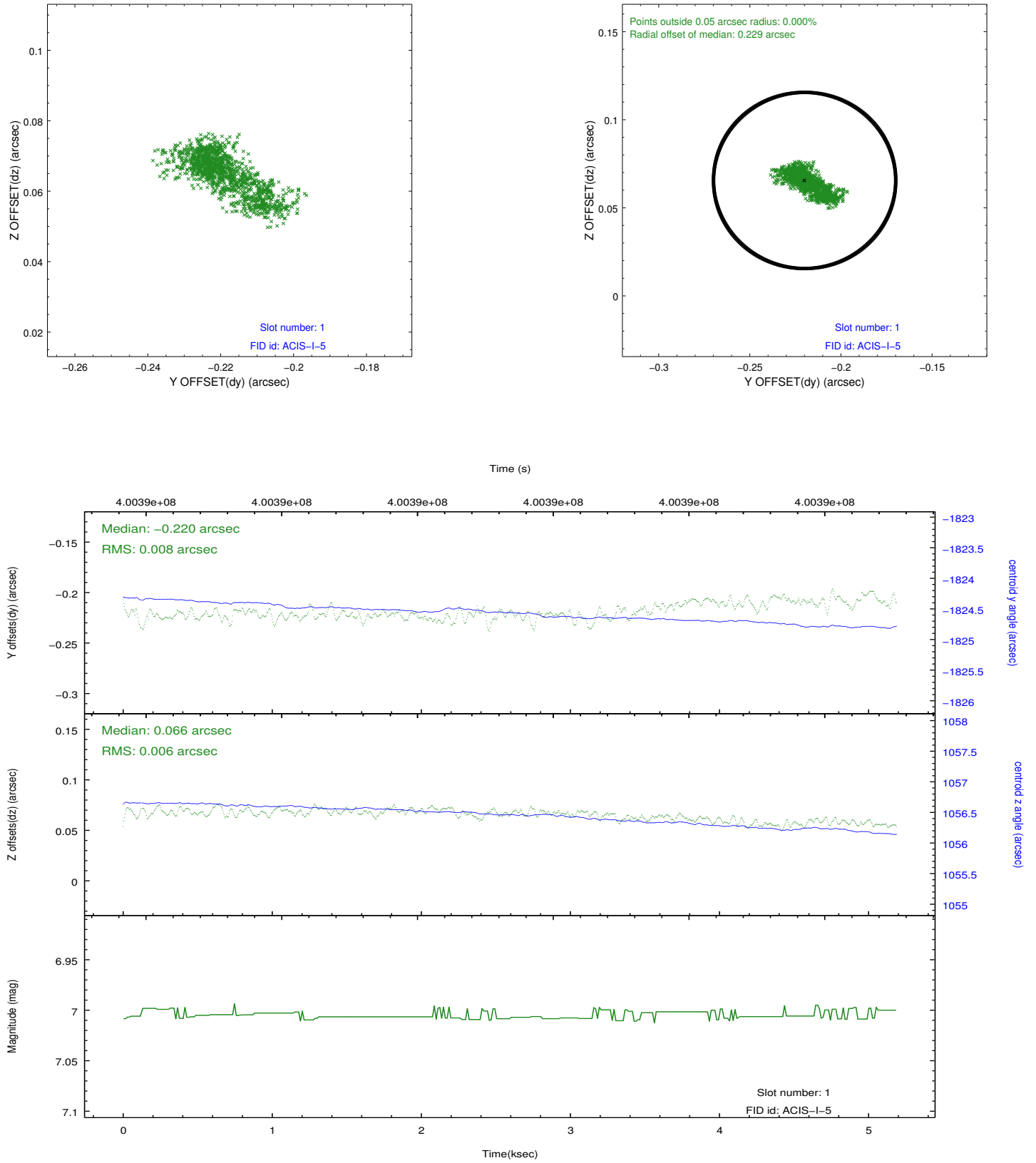


2.5 FID Slots

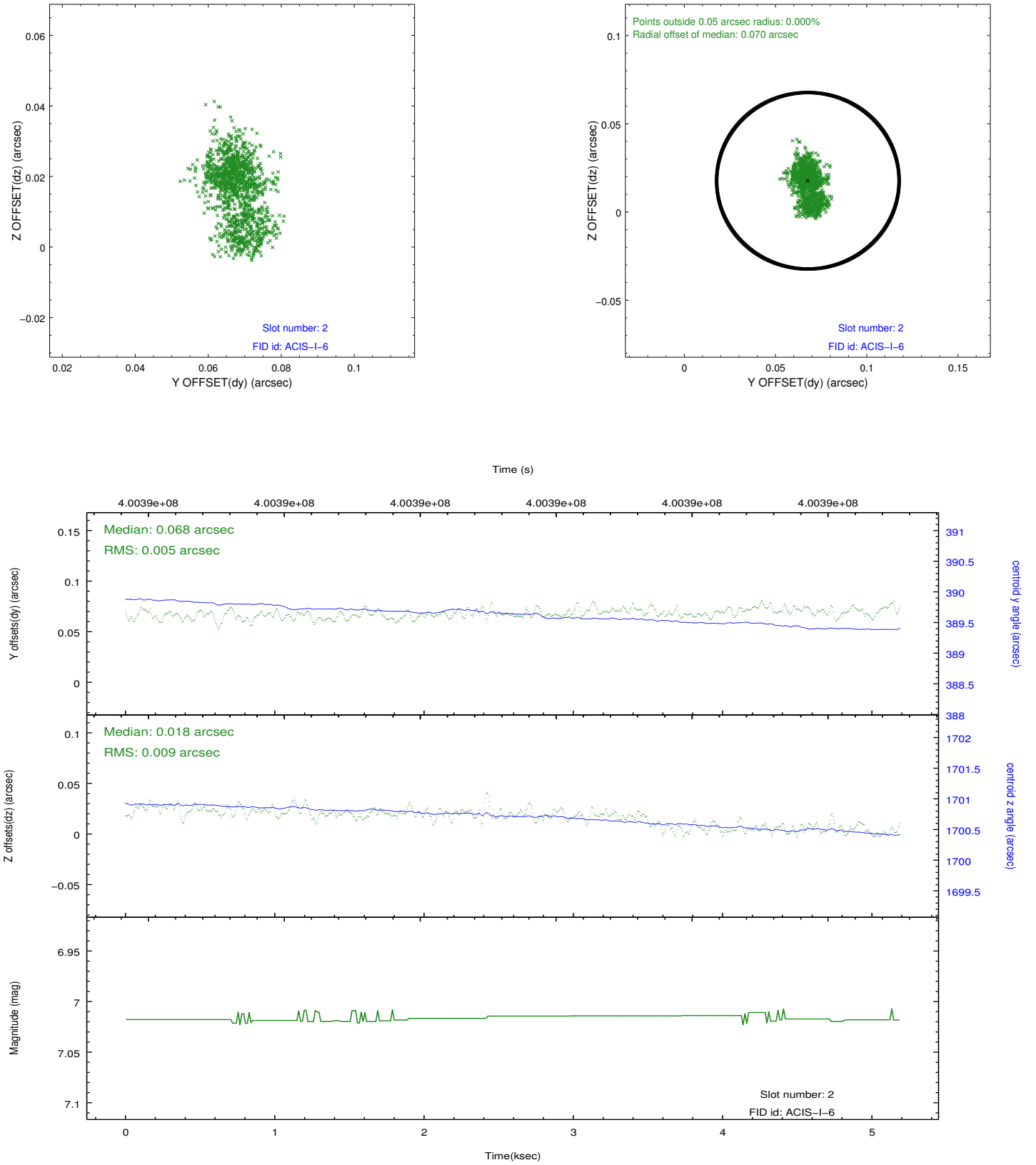
2.5.1 Slot 0



2.5.2 Slot 1



2.5.3 Slot 2



A Summary

A.1 Status

V&V Scientist	Jen Lauer
V&V Date (YYYY-MM-DD)	2012.07.11
V&V Edition	1
V&V Disposition and Status	OK
V&V Charge Time	4.7757691789865

A.2 Comments