

V&V Reference Report

L2 ASCDS Version : 8.4.5

Observation 12027 - L2 Version 2
Chandra X-Ray Center

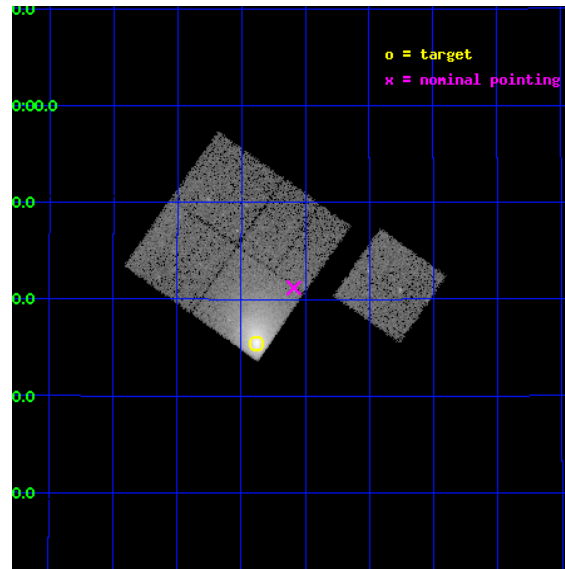
L2 Processing Date : Jun 22 2012

Contents

1	Front	2
2	OBI	3
2.1	OBI	3
2.1.1	Images	3
2.1.2	Bias	3
2.1.3	Parameters	4
2.1.4	Events	4
2.2	Compared Parameters	5
2.3	Aspect	6
2.4	Star Slots	9
2.4.1	Slot 3	9
2.4.2	Slot 4	10
2.4.3	Slot 5	11
2.4.4	Slot 6	12
2.4.5	Slot 7	13
2.5	FID Slots	14
2.5.1	Slot 0	14
2.5.2	Slot 1	15
2.5.3	Slot 2	16
A	Summary	17
A.1	Status	17
A.2	Comments	17

1 Front

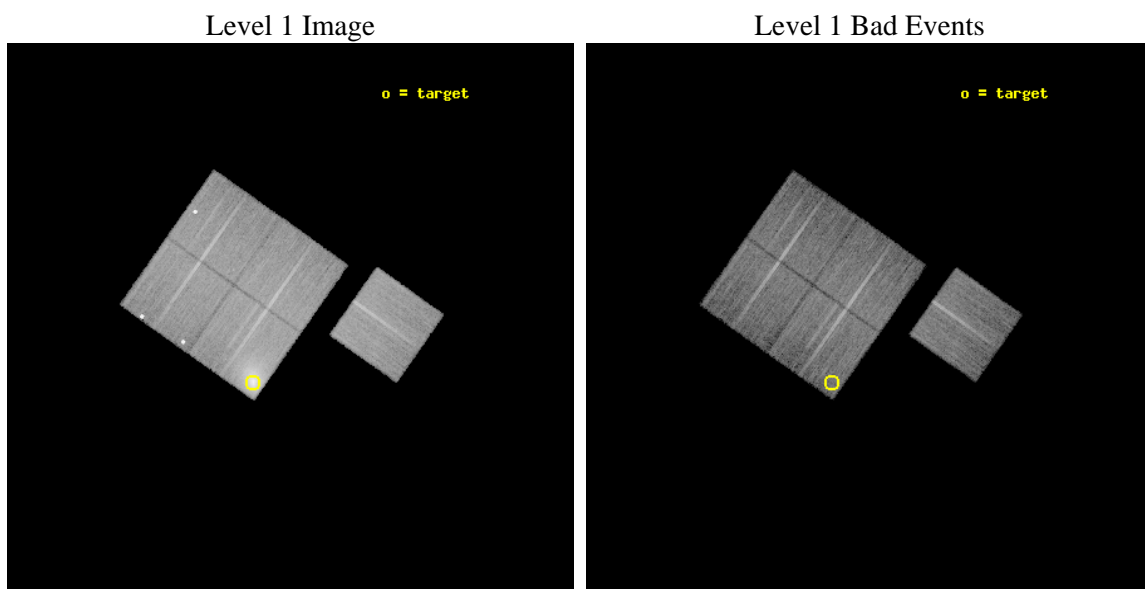
seq_num	890043	Sequence number
obs_id	12027	Observation id
title	AO-11 Calibration Observations of A1795	Proposal title
observer	Dr. CXC Calibration	Principal investigator
object	A1795	Source name
dtcycle	0	
cycle	P	events from which exps? Prim/Second/Both
ra_targ	207.219583	Observer's specified target RA [deg]
dec_targ	26.590833	Observer's specified target Dec [deg]
ra_nom	207.14725166442	Nominal RA [deg]
dec_nom	26.686354938593	Nominal Dec [deg]
roll_nom	125.1773675085	Nominal Roll [deg]
revision	2	Processing version of data
ontime	15044.300115705	Sum of GTIs [s]
liveltime	14847.73525924	Livetime [s]
ontime0	15044.300115705	Sum of GTIs [s]
ontime1	15041.159065485	Sum of GTIs [s]
ontime2	15044.300115705	Sum of GTIs [s]
ontime3	15044.300115705	Sum of GTIs [s]
ontime6	15041.15907532	Sum of GTIs [s]
l2events	132170	Number of level 2 events



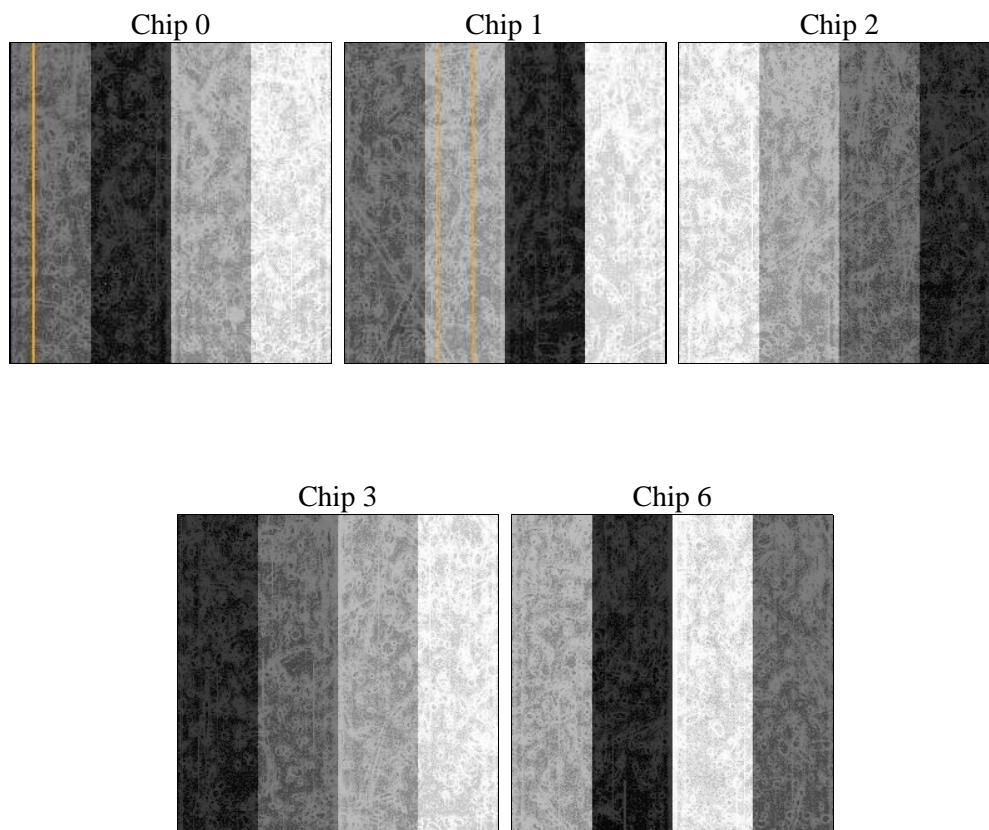
2 OBI

2.1 OBI

2.1.1 Images



2.1.2 Bias



2.1.3 Parameters

obi_num	0	Obi number	sched_exp_time	15000.000000	[s] Scheduled observation exposure time
ascdsver	8.4.5	Processing system revision	ontime	15044.300115705	Sum of GTIs [s]
caldbver	4.4.10	 	ontime0	15044.300115705	Sum of GTIs [s]
date	2012-06-22T17:35:06	Date and time of file creation	ontime1	15041.159065485	Sum of GTIs [s]
revision	2	Processing version of data	ontime2	15044.300115705	Sum of GTIs [s]
			ontime3	15044.300115705	Sum of GTIs [s]
			ontime6	15041.15907532	Sum of GTIs [s]
			l1events	686037	Number of level 1 events

2.1.4 Events

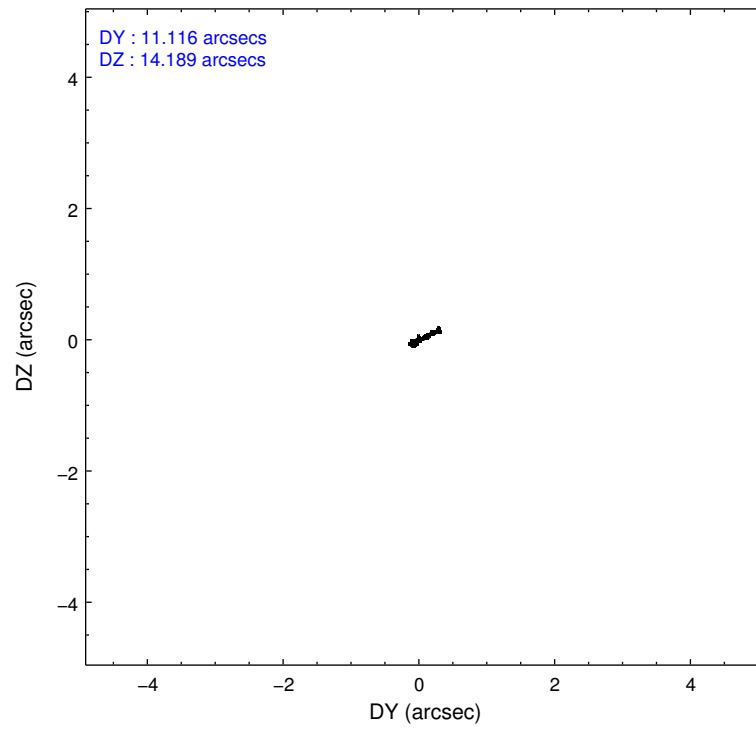
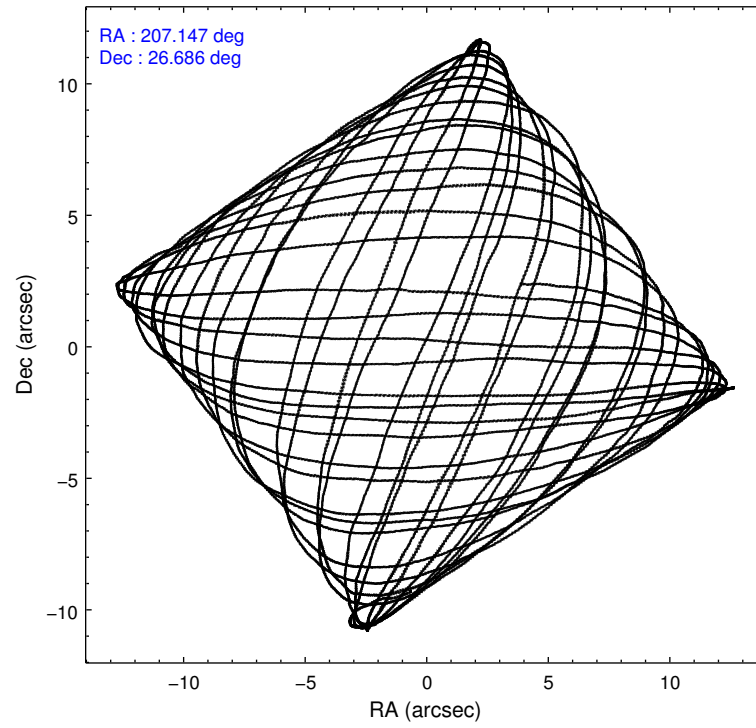
	ccd 0	ccd 1	ccd 2	ccd 3	ccd 6
level 1 events	116377	123612	125717	197885	122446
rejected events	98480	99144	111671	110192	108738
rejected %	84%	80%	88%	55%	88%

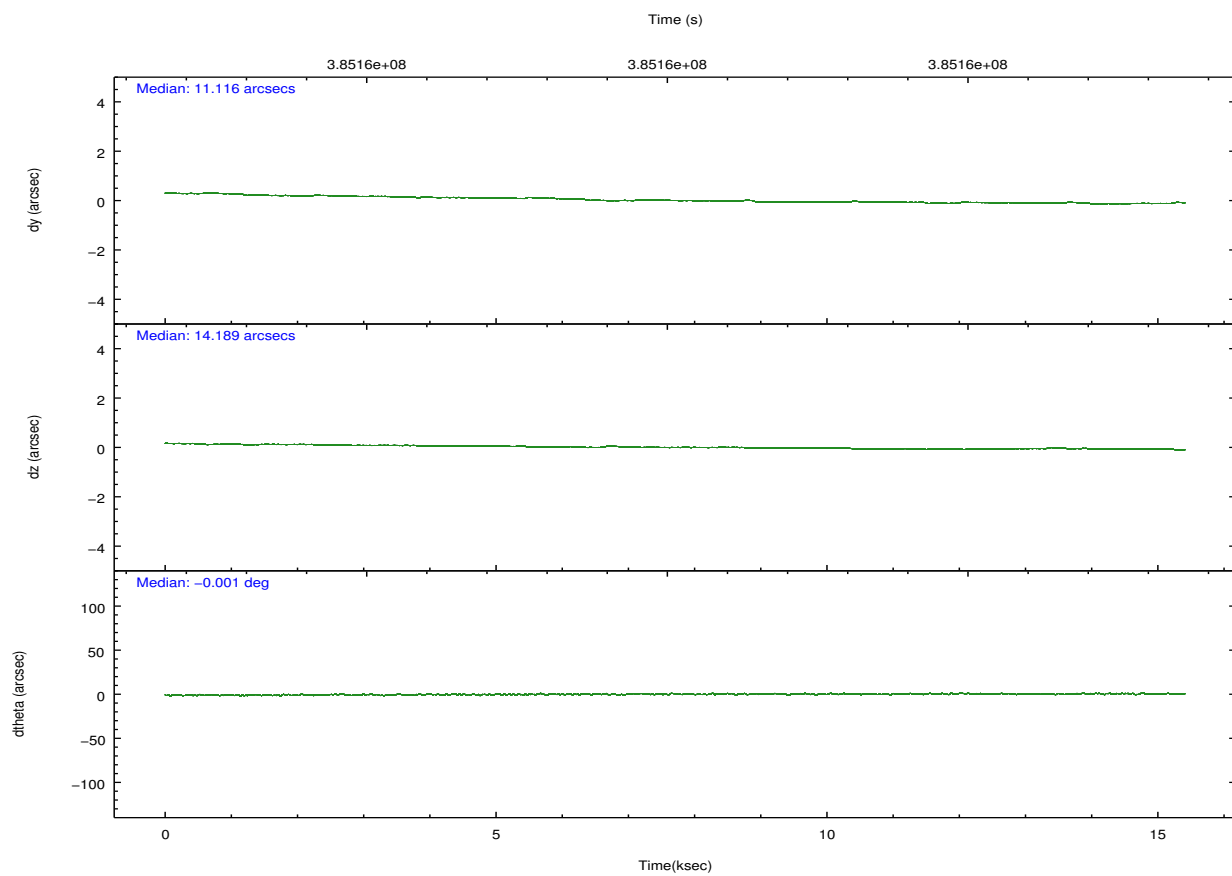
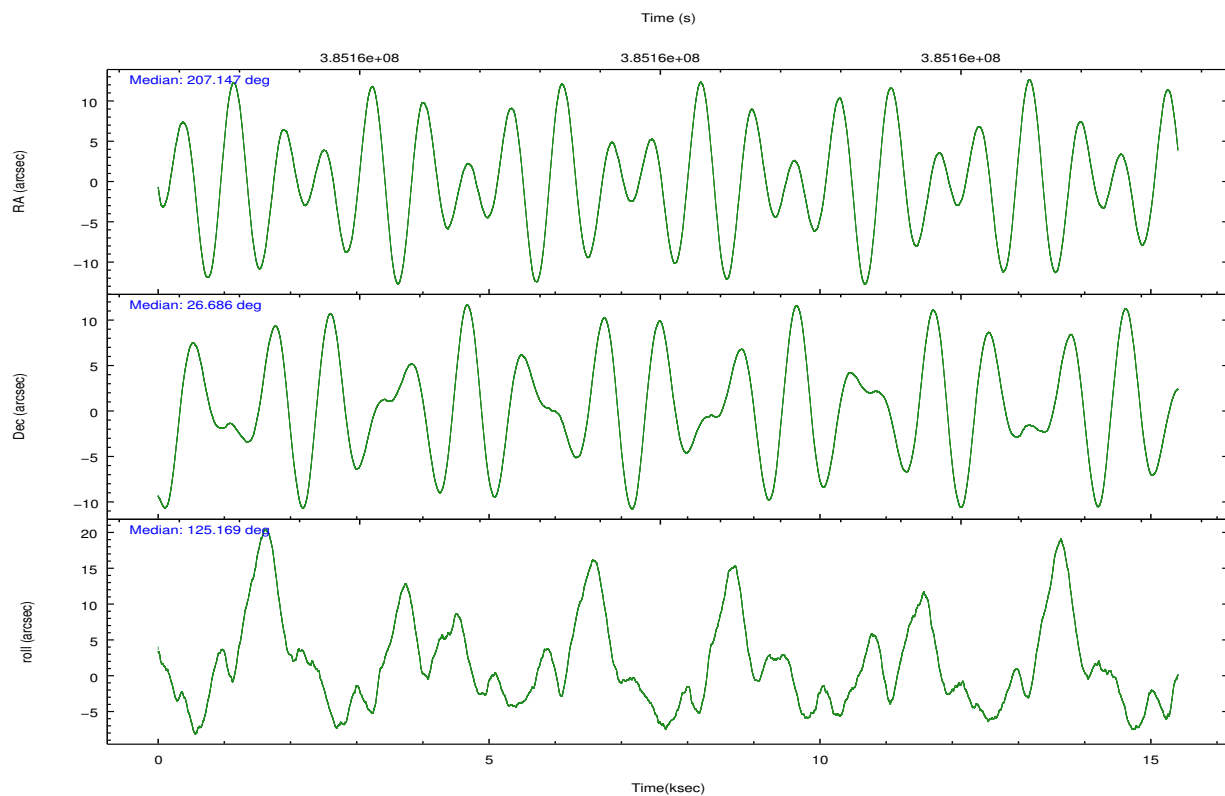
	ccd 0	ccd 1	ccd 2	ccd 3	ccd 6
grade 0 events	9380	15096	5893	65004	5160
	8%	12%	4%	32%	4%
grade 1 events	98	88	91	370	57
	0%	0%	0%	0%	0%
grade 2 events	3146	3358	3020	10500	2959
	2%	2%	2%	5%	2%
grade 3 events	1400	1531	1346	3804	1373
	1%	1%	1%	1%	1%
grade 4 events	1392	1511	1383	3875	1368
	1%	1%	1%	1%	1%
grade 5 events	4655	5059	4414	5574	5171
	3%	4%	3%	2%	4%
grade 6 events	2586	2983	2408	4546	2852
	2%	2%	1%	2%	2%
grade 7 events	93720	93986	107162	104212	103506
	80%	76%	85%	52%	84%

2.2 Compared Parameters

Parameter	Planned	Actual	Parameter	Planned	Actual
Instrument	ACIS	ACIS	Obspar format version number	7	7
Detector	ACIS-01236	ACIS-01236	Obspar file type	PREDICTED	ACTUAL
Grating	NONE	NONE	Obspar update status	NONE	UPDATED
Data mode	VFAINT	VFAINT	Number of optional ACIS chips dropped	0	0
Observation mode	POINTING	POINTING	On-chip summing requested	N	N
[deg] Pointing RA	207.175210	207.1472516644241	Subarray requested	NONE	NONE
[deg] Pointing Dec	26.674946	26.68635493859281	Alternating exposures requested	N	N
[deg] Pointing Roll	124.956130	125.1773675084961	[s] Primary exposure time	0.000000	3.1
[mm] SIM focus pos	-0.782348	-0.7809083437167272			
[mm] SIM defocus	0	0.001439871863259334			
[mm] SIM translation stage pos	-214.092463	-214.0964622431356			
[mm] SIM translation stage offset	-19.5	-19.49599075979413			
[s] Observation start time (MET)	385152826.184000	385151780.67651			
Observation start date	2010-03-16T18:52:40	2010-03-16T18:36:20			
[s] Observation end time (MET)	385167826.184000	385168442.56485			
Observation end date	2010-03-16T23:02:40	2010-03-16T23:14:02			
Read mode	TIMED	TIMED			

2.3 Aspect



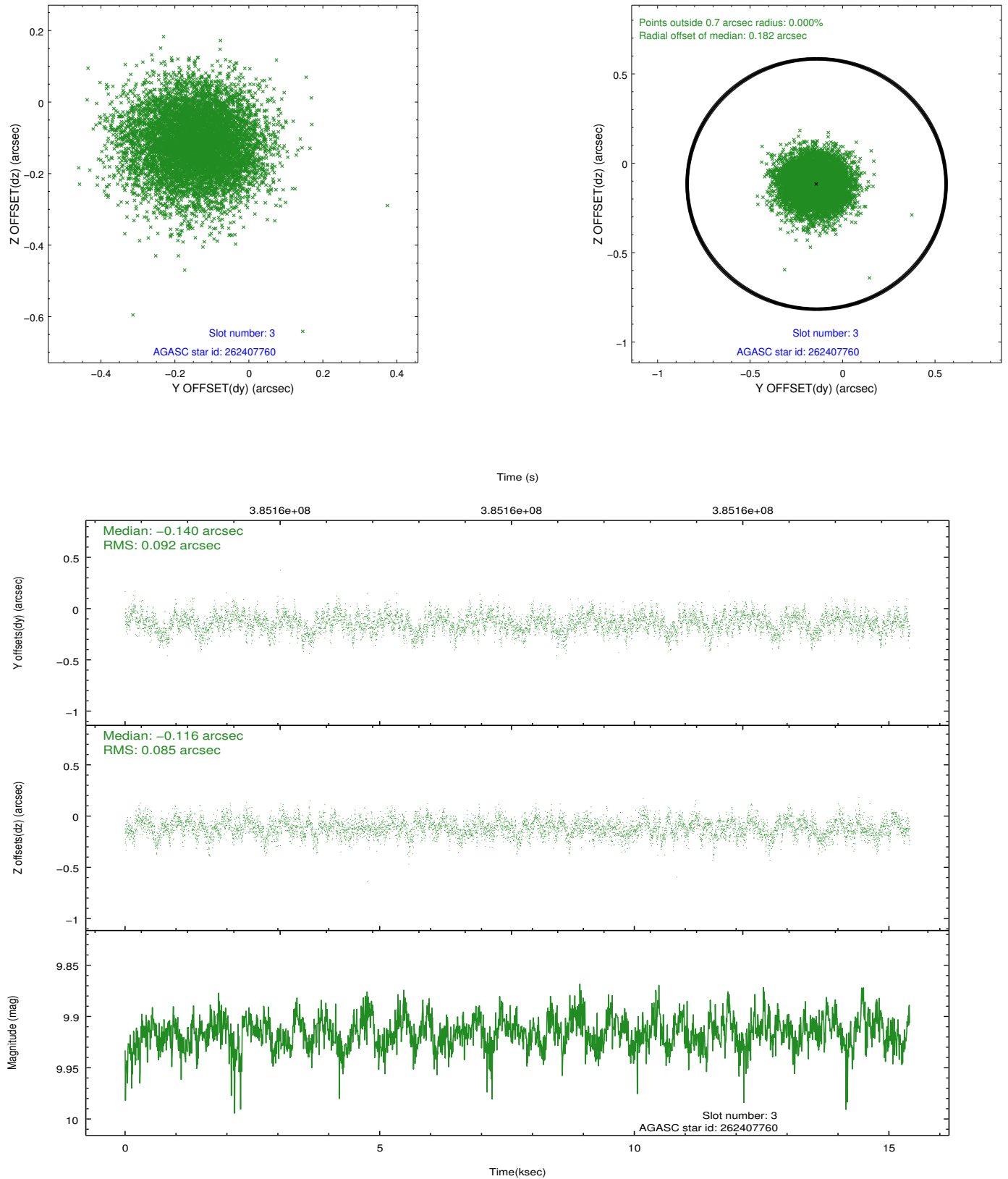


Slot Statistics

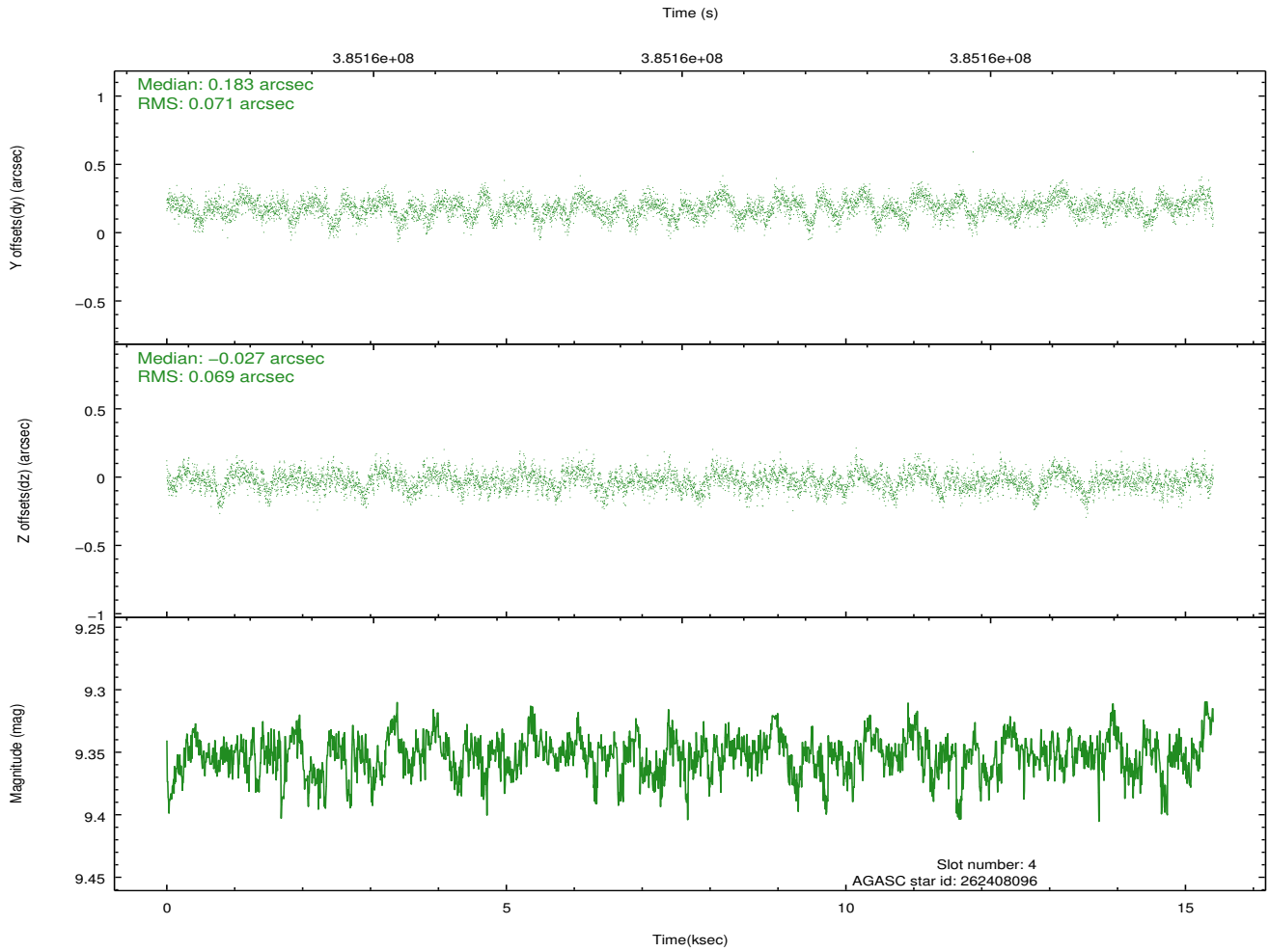
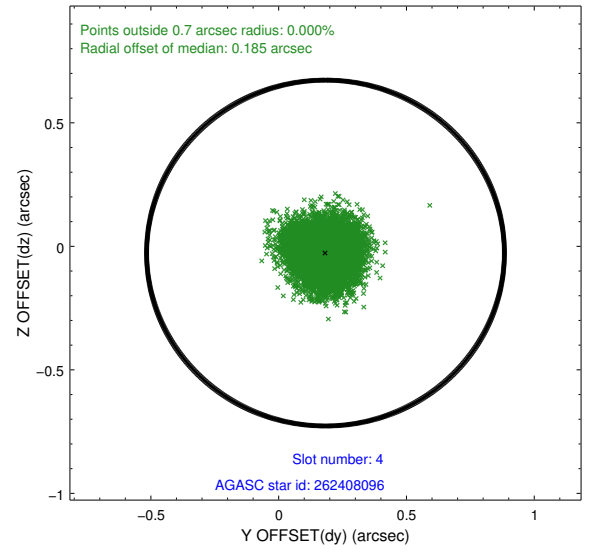
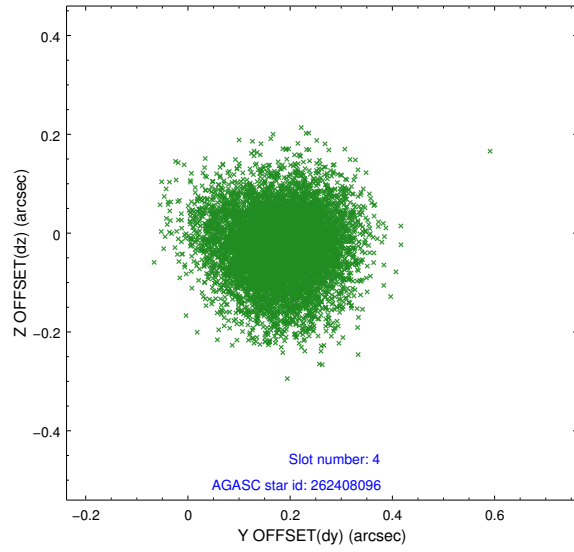
slot	status	id	mag	n_pts	med_dy	med_dz	dr1	dr2	ra	dec	mean_y	mean_z
0	FID	ACIS-I-1	7.09	3759	0.310	-0.227	0.006	0.011	0.000000	0.000000	928.33	-1238.41
1	FID	ACIS-I-5	7.09	3758	-0.431	0.238	0.007	0.012	0.000000	0.000000	-1820.31	659.35
2	FID	ACIS-I-6	7.15	3759	0.030	0.060	0.007	0.011	0.000000	0.000000	393.34	1303.96
3	GUIDE	262407760	9.92	7504	-0.140	-0.116	0.134	0.214	206.566773	26.577263	838.36	1804.69
4	GUIDE	262408096	9.35	7505	0.183	-0.027	0.106	0.171	207.011678	26.515421	-167.53	761.14
5	GUIDE	262408104	10.37	7461	0.118	0.188	0.252	0.456	207.864096	26.823111	-825.66	-2122.89
6	GUIDE	262409624	10.08	7504	-0.118	-0.094	0.210	0.319	207.610037	27.074851	383.91	-1968.77
7	GUIDE	262275128	10.46	7496	-0.028	0.053	0.235	0.373	206.271046	26.873005	2256.73	1965.56

2.4 Star Slots

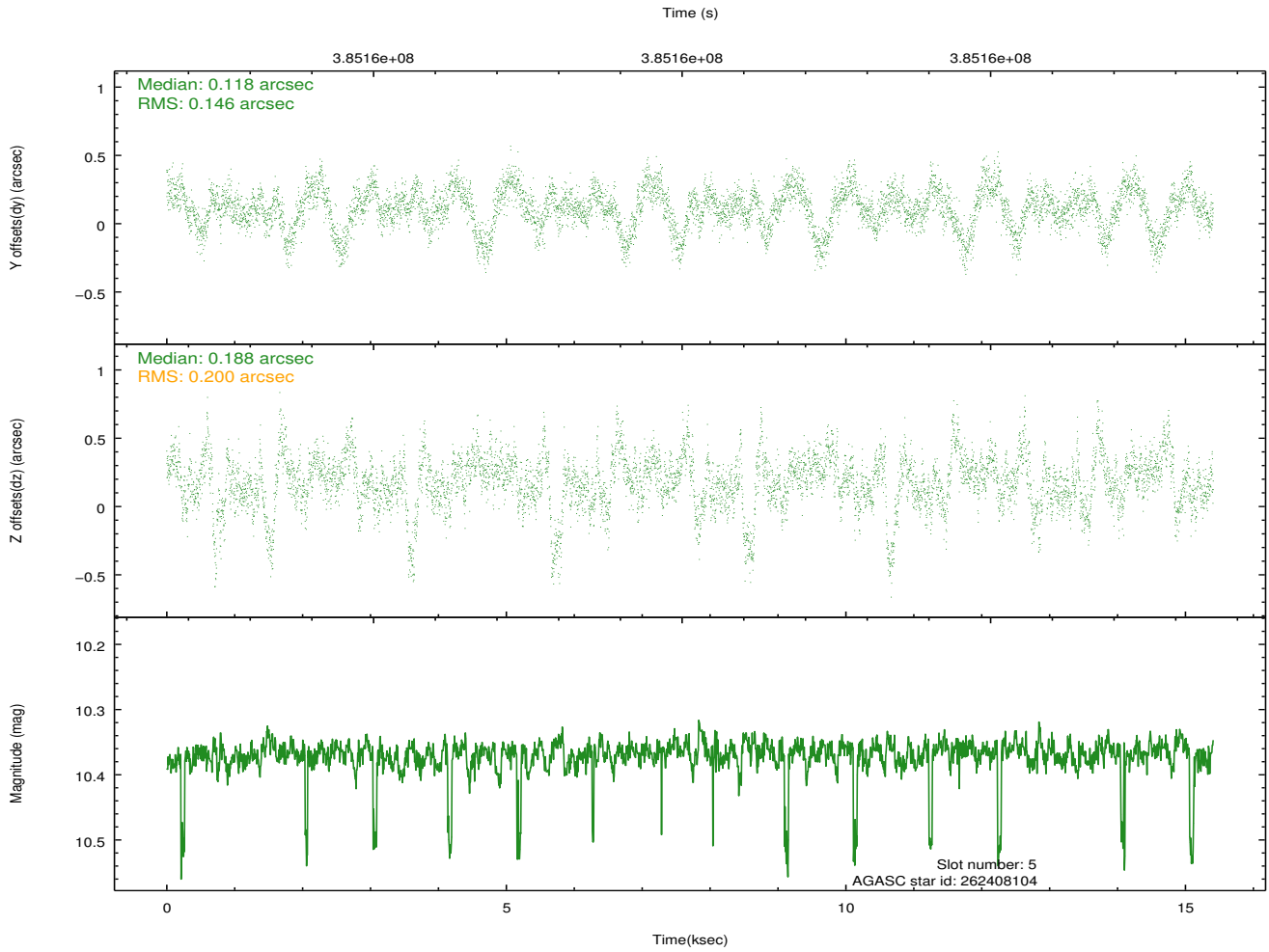
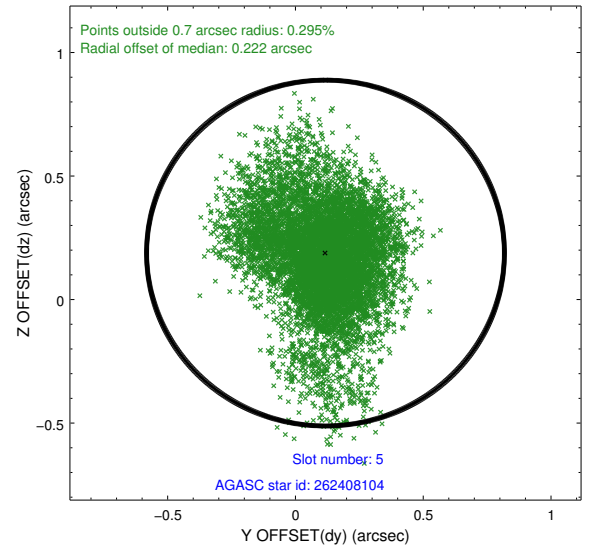
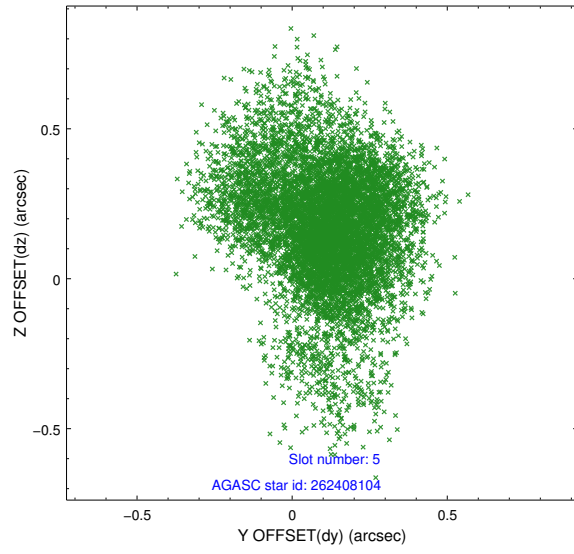
2.4.1 Slot 3



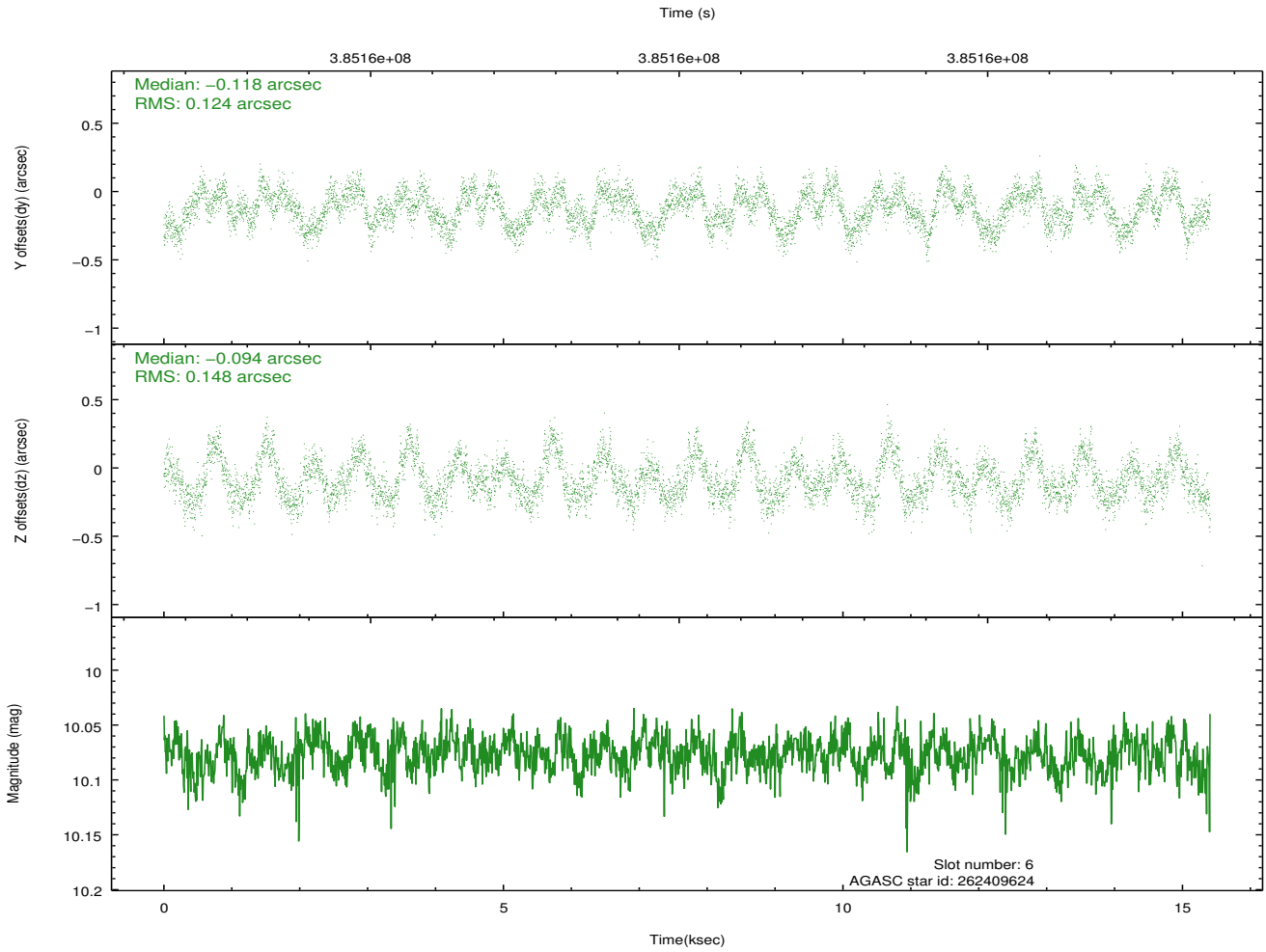
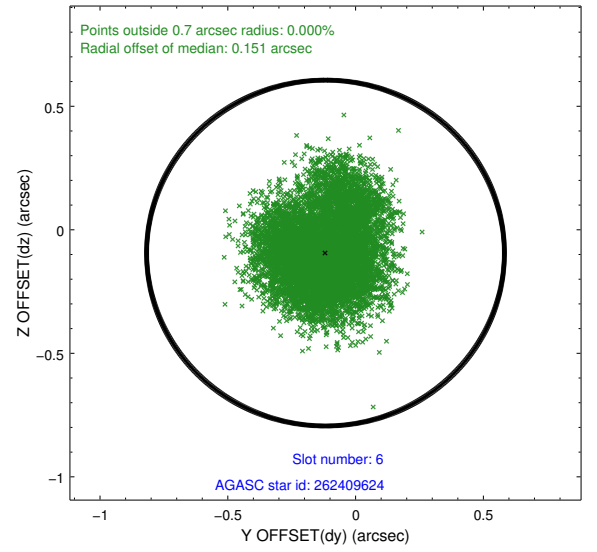
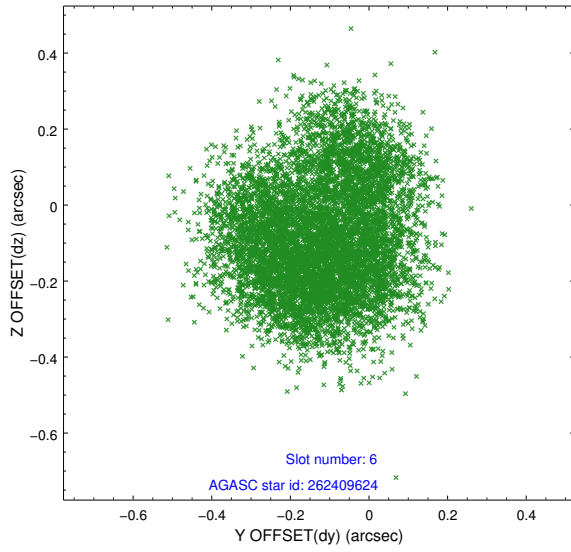
2.4.2 Slot 4



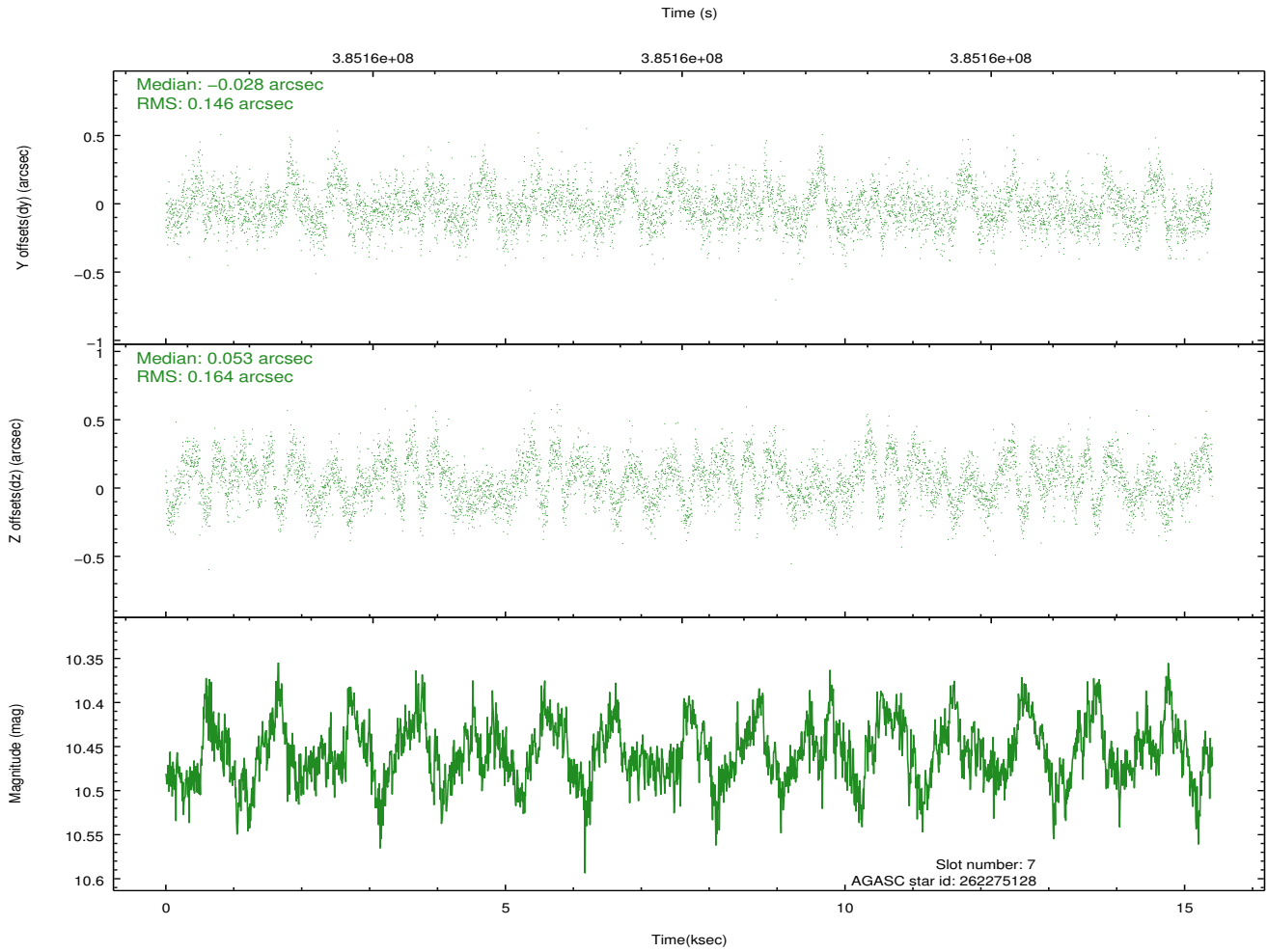
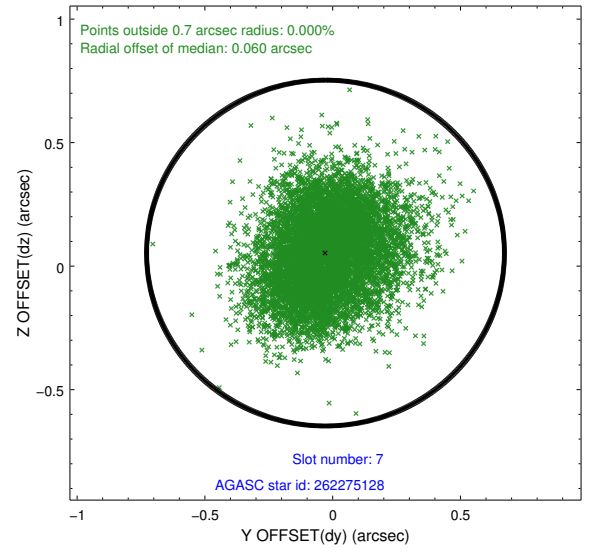
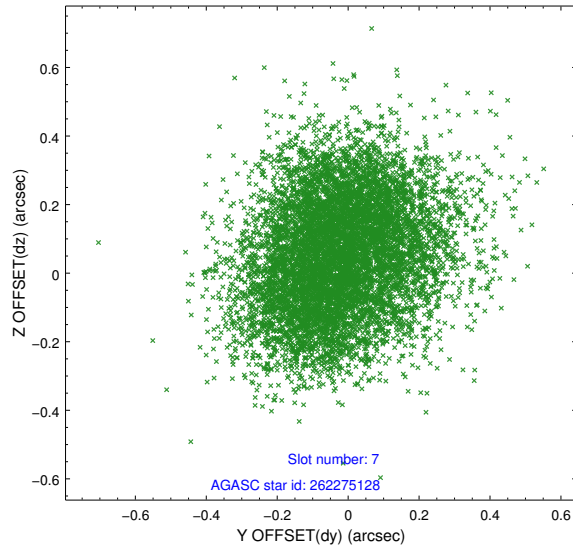
2.4.3 Slot 5



2.4.4 Slot 6

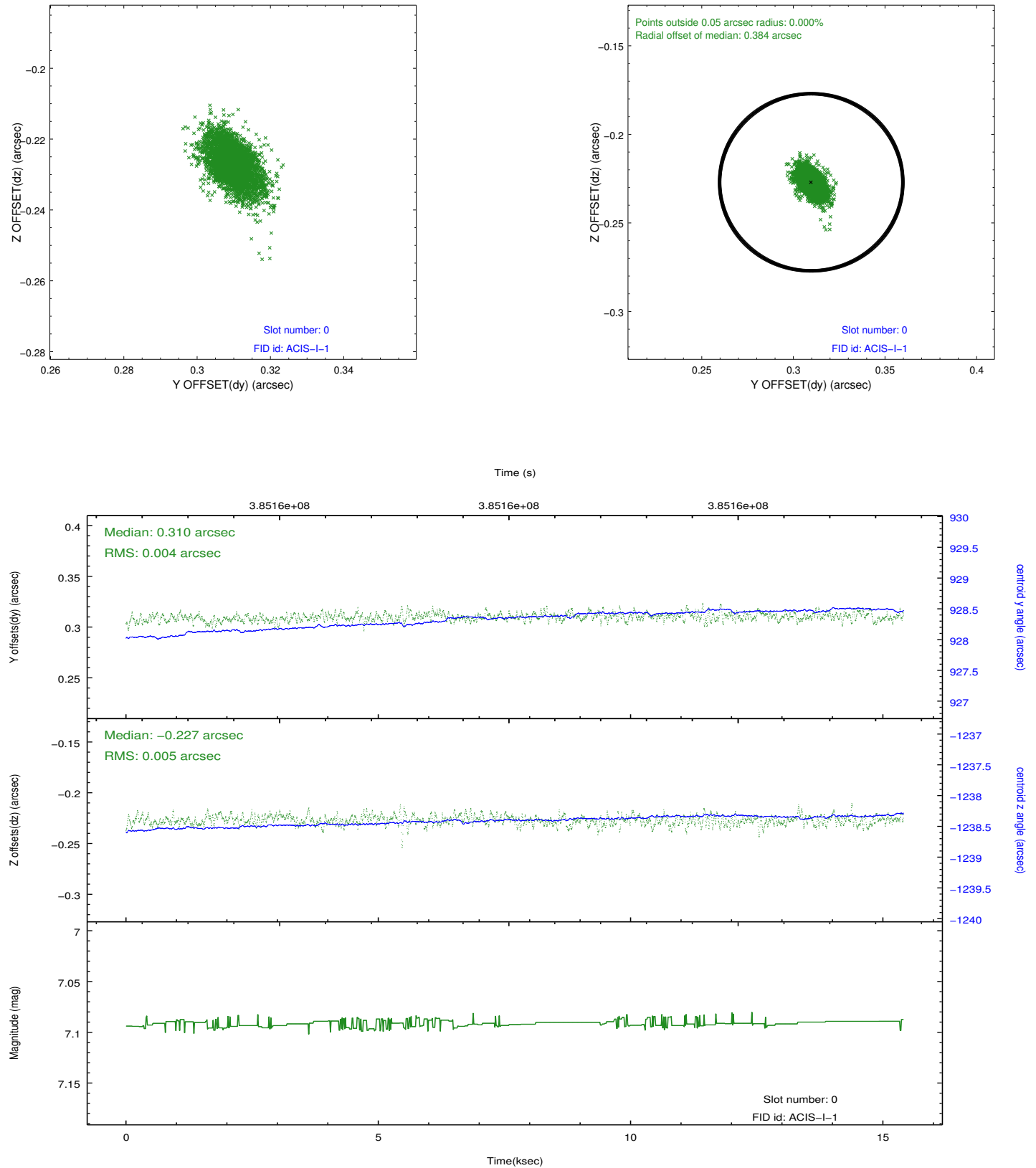


2.4.5 Slot 7

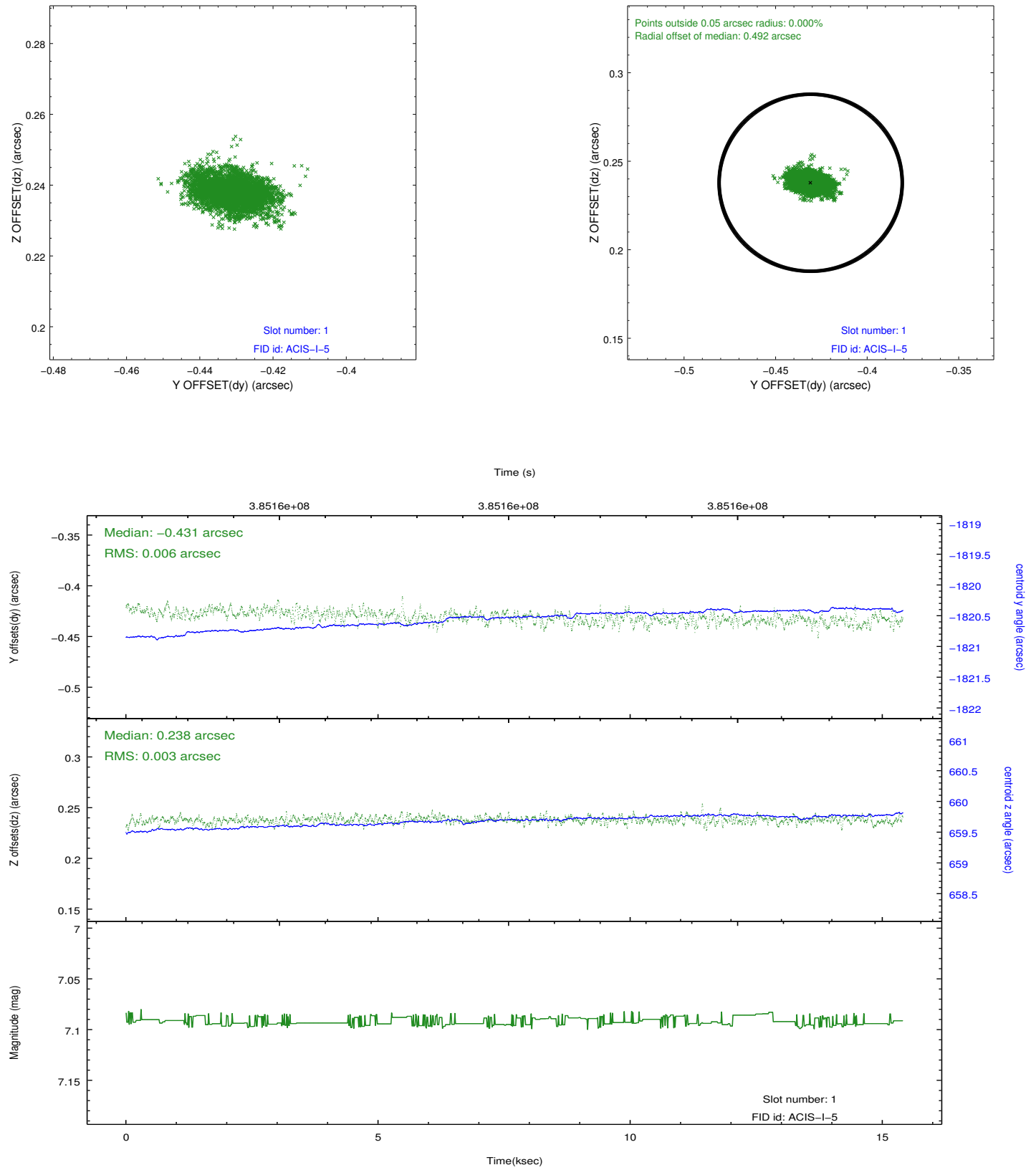


2.5 FID Slots

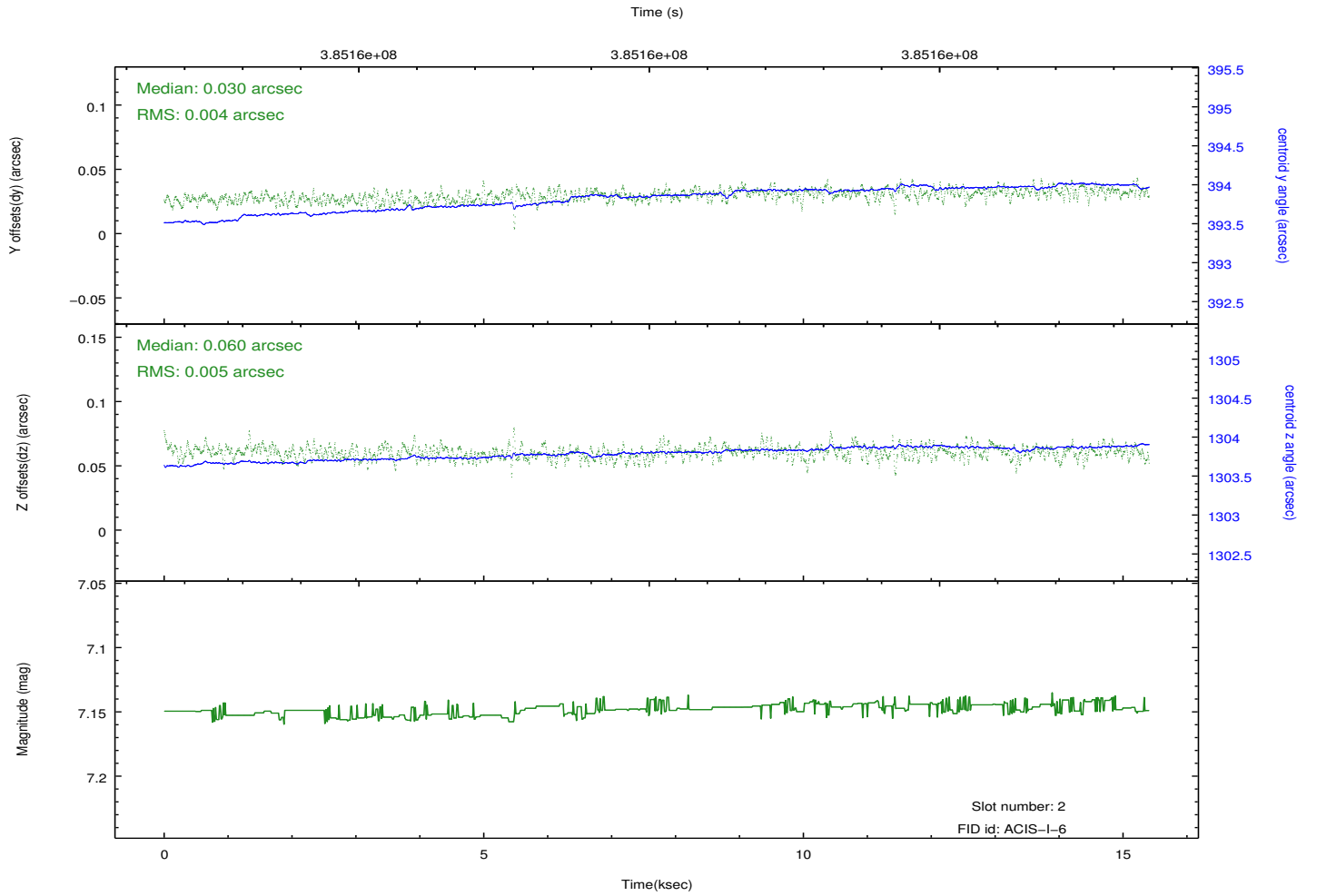
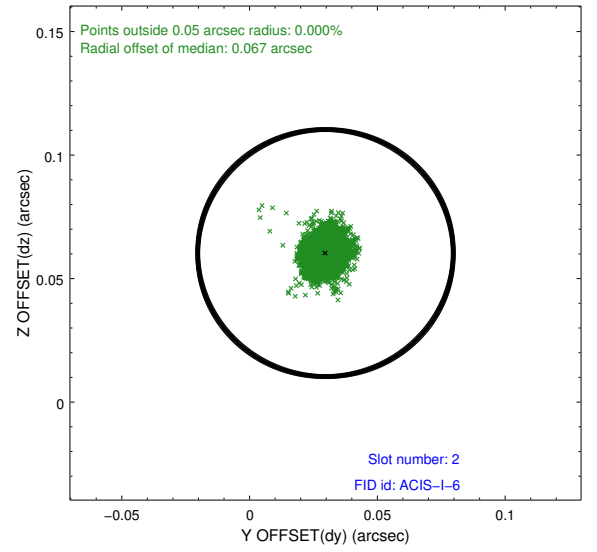
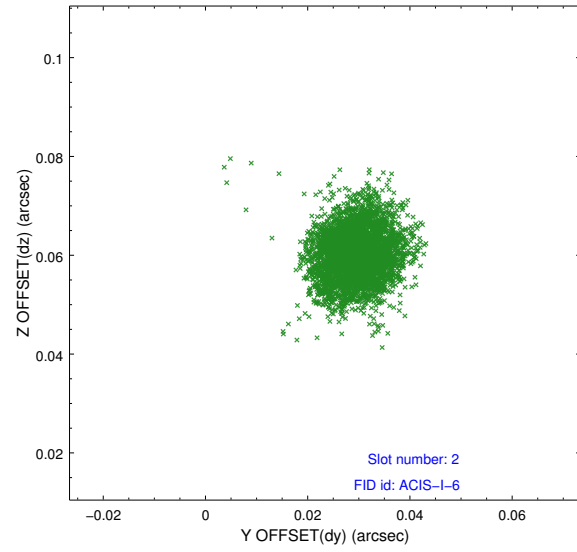
2.5.1 Slot 0



2.5.2 Slot 1



2.5.3 Slot 2



A Summary

A.1 Status

V&V Scientist	Jen Lauer
V&V Date (YYYY-MM-DD)	2012.07.03
V&V Edition	1
V&V Disposition and Status	OK
V&V Charge Time	15.044300115705

A.2 Comments

This observation was performed with a large SIM offset, per PI request. As a result, the fid light positions are offset beyond normally expected ranges, but the fid light position correction has compensated for this offset.