

V&V Reference Report

L2 ASCDS Version : 8.4.5

Observation 11887 - L2 Version 2
Chandra X-Ray Center

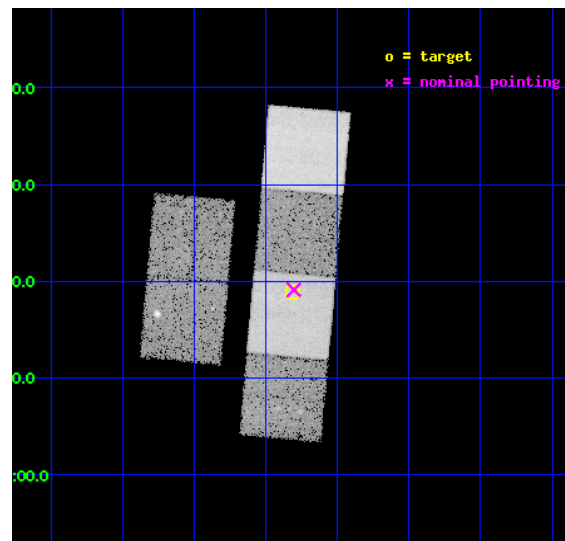
L2 Processing Date : Jun 13 2012

Contents

1	Front	2
2	OBI	3
2.1	OBI	3
2.1.1	Images	3
2.1.2	Bias	3
2.1.3	Parameters	4
2.1.4	Events	4
2.2	Compared Parameters	5
2.3	Aspect	6
2.4	Star Slots	9
2.4.1	Slot 3	9
2.4.2	Slot 4	10
2.4.3	Slot 5	11
2.4.4	Slot 6	12
2.4.5	Slot 7	13
2.5	FID Slots	14
2.5.1	Slot 0	14
2.5.2	Slot 1	15
2.5.3	Slot 2	16
A	Summary	17
A.1	Status	17
A.2	Comments	17

1 Front

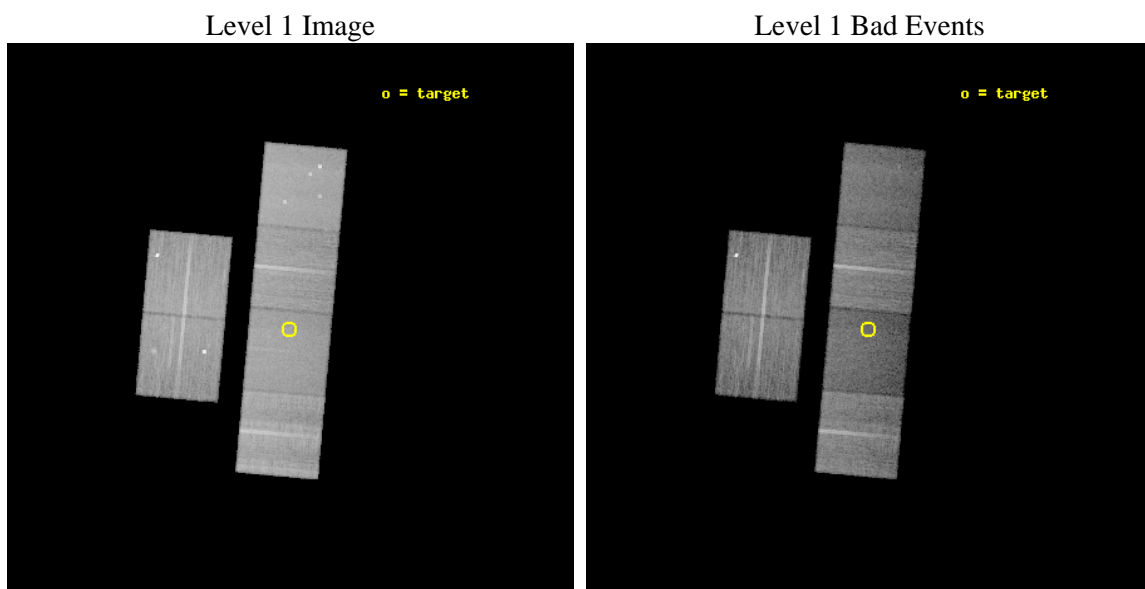
seq_num	600799	Sequence number
obs_id	11887	Observation id
title	Search for the Most Luminous ULXs in Collisional Ring Galaxies	Pro
observer	Prof. Saul Rappaport	Principal investigator
object	Arp 147	Source name
dtcycle	0	
cycle	P	events from which exps? Prim/Second/Both
ra_targ	47.82875	Observer's specified target RA [deg]
dec_targ	1.314722	Observer's specified target Dec [deg]
ra_nom	47.825839545767	Nominal RA [deg]
dec_nom	1.3186153816776	Nominal Dec [deg]
roll_nom	95.156714426592	Nominal Roll [deg]
revision	2	Processing version of data
ontime	18268.799932003	Sum of GTIs [s]
livetime	18037.469387113	Livetime [s]
ontime2	18268.799932003	Sum of GTIs [s]
ontime3	18268.799932003	Sum of GTIs [s]
ontime5	18268.799932003	Sum of GTIs [s]
ontime6	18262.317871332	Sum of GTIs [s]
ontime7	18268.799932003	Sum of GTIs [s]
ontime8	18268.799932003	Sum of GTIs [s]
l2events	214666	Number of level 2 events



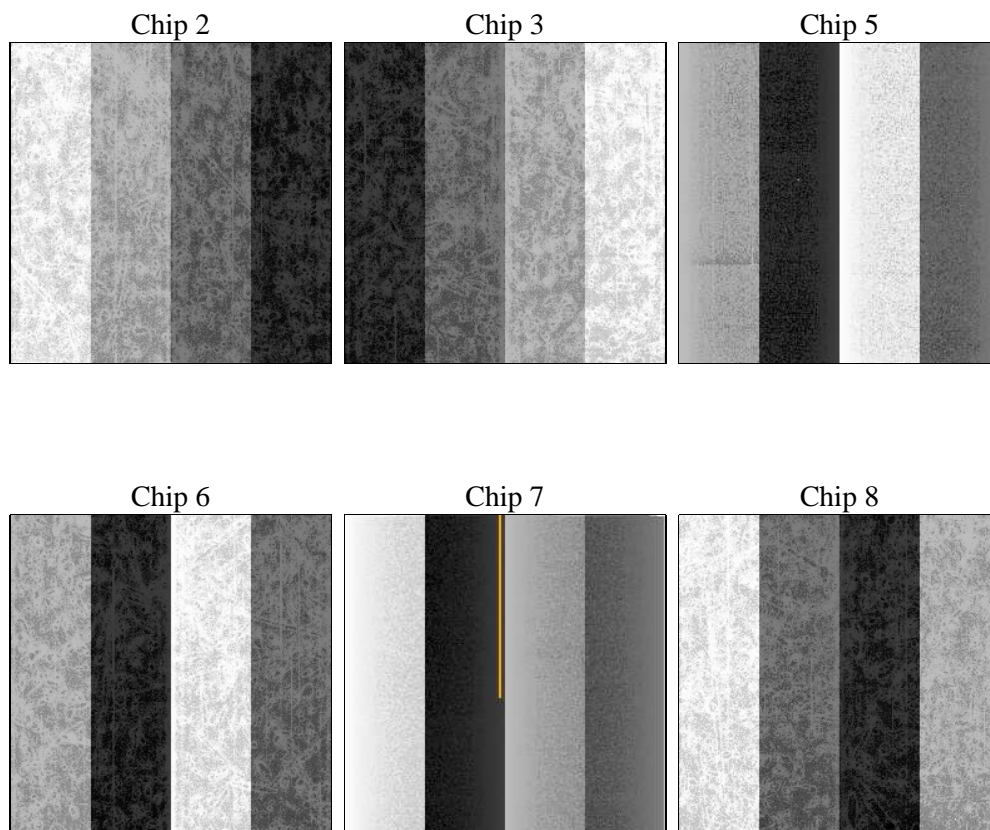
2 OBI

2.1 OBI

2.1.1 Images



2.1.2 Bias



2.1.3 Parameters

obi_num	0	Obi number	sched_exp_time	18228.337000	[s] Scheduled observation exposure time
ascdsver	8.4.5	Processing system revision	ontime	18268.799932003	Sum of GTIs [s]
caldsver	4.4.10	 	ontime2	18268.799932003	Sum of GTIs [s]
date	2012-06-13T05:04:03	Date and time of file creation	ontime3	18268.799932003	Sum of GTIs [s]
revision	2	Processing version of data	ontime5	18268.799932003	Sum of GTIs [s]
			ontime6	18262.317871332	Sum of GTIs [s]
			ontime7	18268.799932003	Sum of GTIs [s]
			ontime8	18268.799932003	Sum of GTIs [s]
			l1events	983696	Number of level 1 events

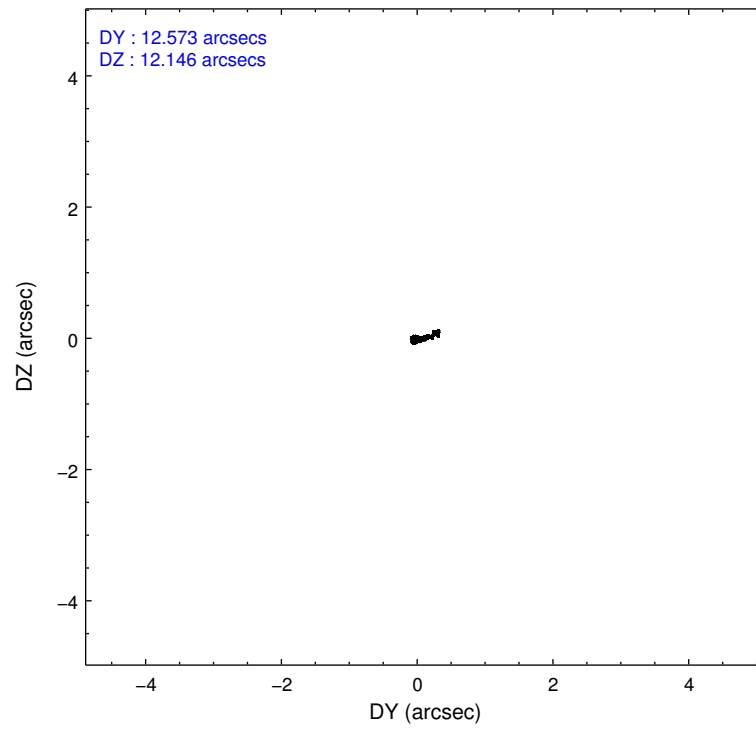
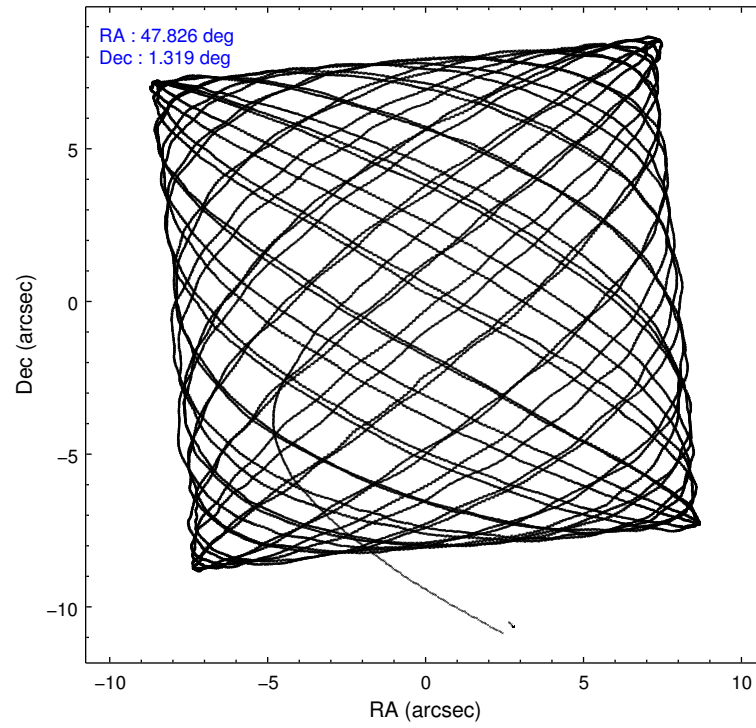
2.1.4 Events

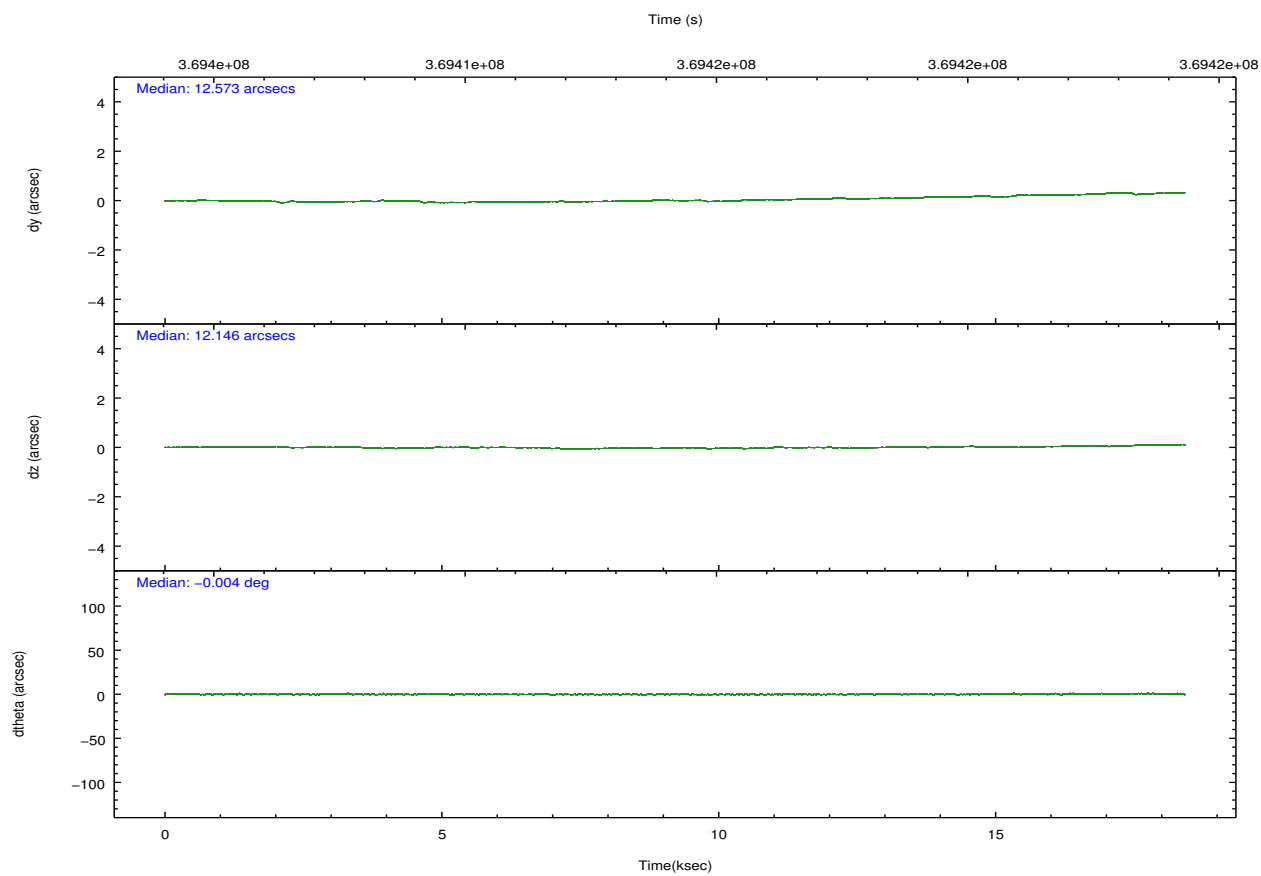
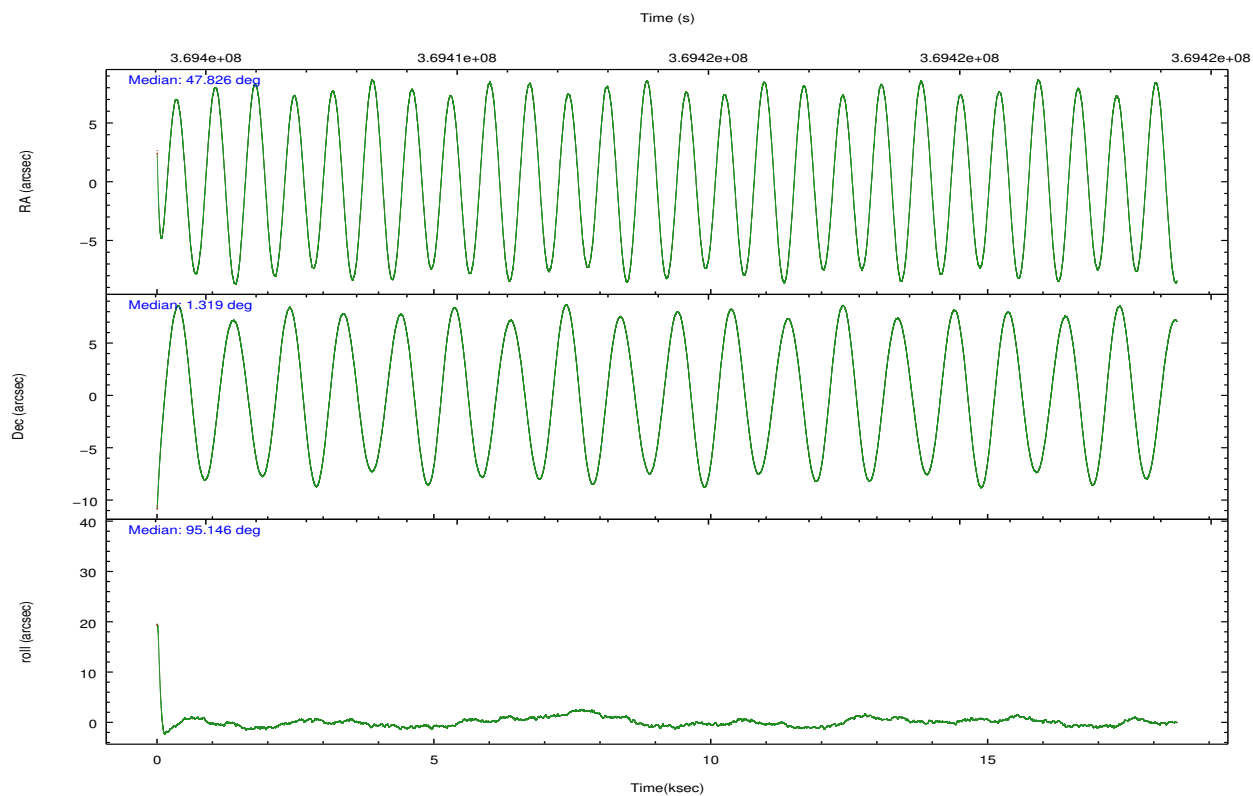
	ccd 2	ccd 3	ccd 5	ccd 6	ccd 7	ccd 8		ccd 2	ccd 3	ccd 5	ccd 6	ccd 7	ccd 8
level 1 events	168311	148207	190790	149450	144177	182761	grade 0 events	5804	10294	11322	5587	7130	13036
rejected events	153296	129083	88900	133969	73729	135835		3%	6%	5%	3%	4%	7%
rejected %	91%	87%	46%	89%	51%	74%	grade 1 events	4389	123	477	80	234	150
								2%	0%	0%	0%	0%	0%
							grade 2 events	3574	3035	31310	3432	15075	11315
								2%	2%	16%	2%	10%	6%
							grade 3 events	1445	1561	4273	1701	6522	5044
								0%	1%	2%	1%	4%	2%
							grade 4 events	1490	1510	4089	1636	6420	4695
								0%	1%	2%	1%	4%	2%
							grade 5 events	4268	5219	15117	5308	15112	7905
								2%	3%	7%	3%	10%	4%
							grade 6 events	2704	2726	50933	3130	35329	12855
								1%	1%	26%	2%	24%	7%
							grade 7 events	144637	123739	73269	128576	58355	127761
								85%	83%	38%	86%	40%	69%

2.2 Compared Parameters

Parameter	Planned	Actual	Parameter	Planned	Actual
Instrument	ACIS	ACIS	Obspar format version number	7	7
Detector	ACIS-235678	ACIS-235678	Obspar file type	PREDICTED	ACTUAL
Grating	NONE	NONE	Obspar update status	NONE	UPDATED
Data mode	VFAINT	VFAINT	CCD I0 on	N	N
Observation mode	POINTING	POINTING	CCD I1 on	N	N
[deg] Pointing RA	47.841900	47.82583954576707	CCD I2 on	O5	Y
[deg] Pointing Dec	1.296462	1.318615381677628	CCD I3 on	O4	Y
[deg] Pointing Roll	94.999699	95.1567144265924	CCD S0 on	N	N
[mm] SIM focus pos	-0.684267	-0.6828225247311905	CCD S1 on	O3	Y
[mm] SIM defocus	0	0.001444936568705701	CCD S2 on	O1	Y
[mm] SIM translation stage pos	-190.132523	-190.1425803651734	CCD S3 on	Y	Y
[mm] SIM translation stage offset	0	0.01005778216563158	CCD S4 on	O2	Y
[s] Observation start time (MET)	369405150.184000	369404142.66873	CCD S5 on	N	N
Observation start date	2009-09-15T12:31:24	2009-09-15T12:15:42	Number of optional ACIS chips dropped	0	0
[s] Observation end time (MET)	369423378.184000	369423603.31971	On-chip summing requested	N	N
Observation end date	2009-09-15T17:35:12	2009-09-15T17:40:03	Subarray requested	NONE	NONE
Read mode	TIMED	TIMED	Alternating exposures requested	N	N
			[s] Primary exposure time	0.000000	3.2

2.3 Aspect



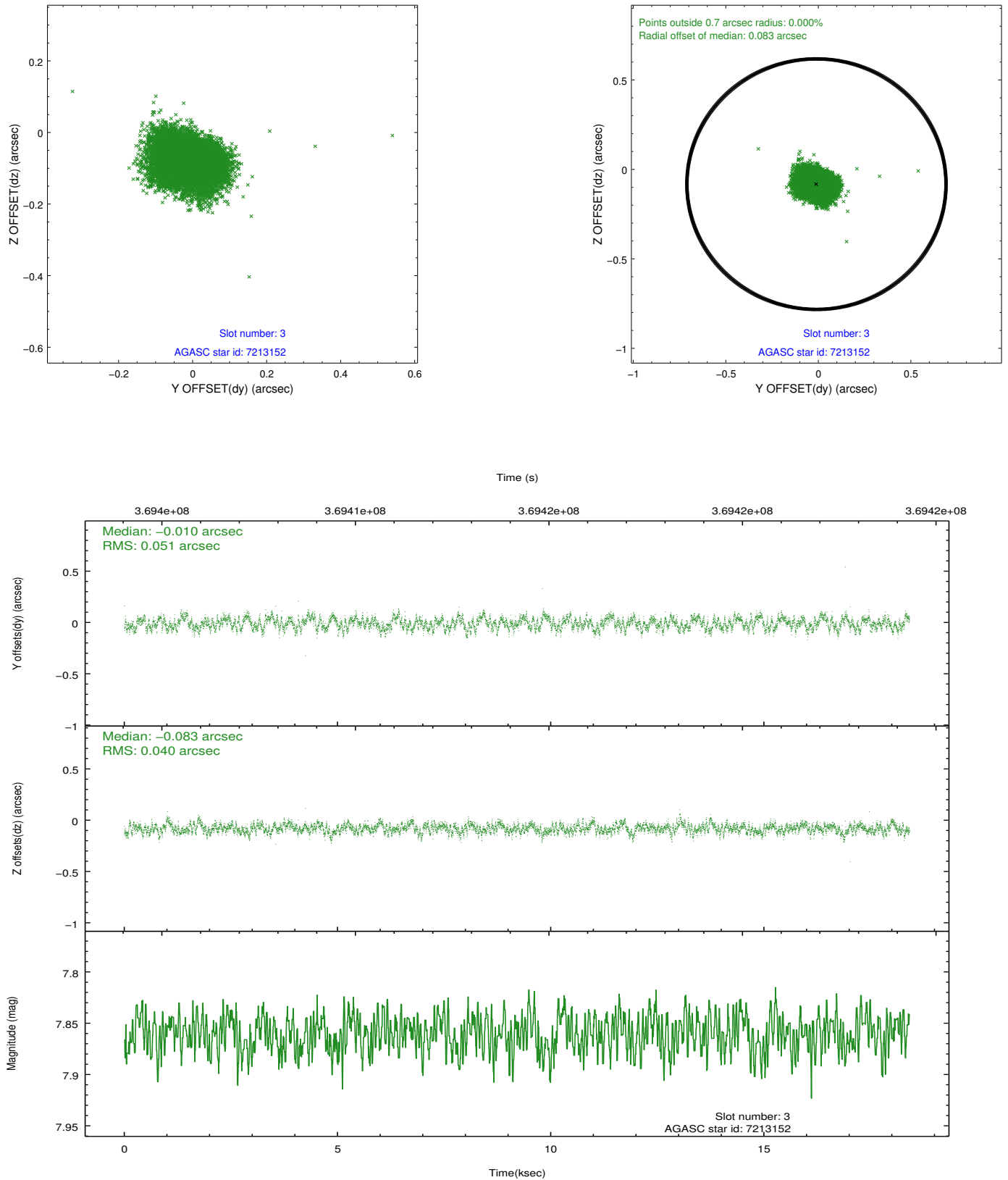


Slot Statistics

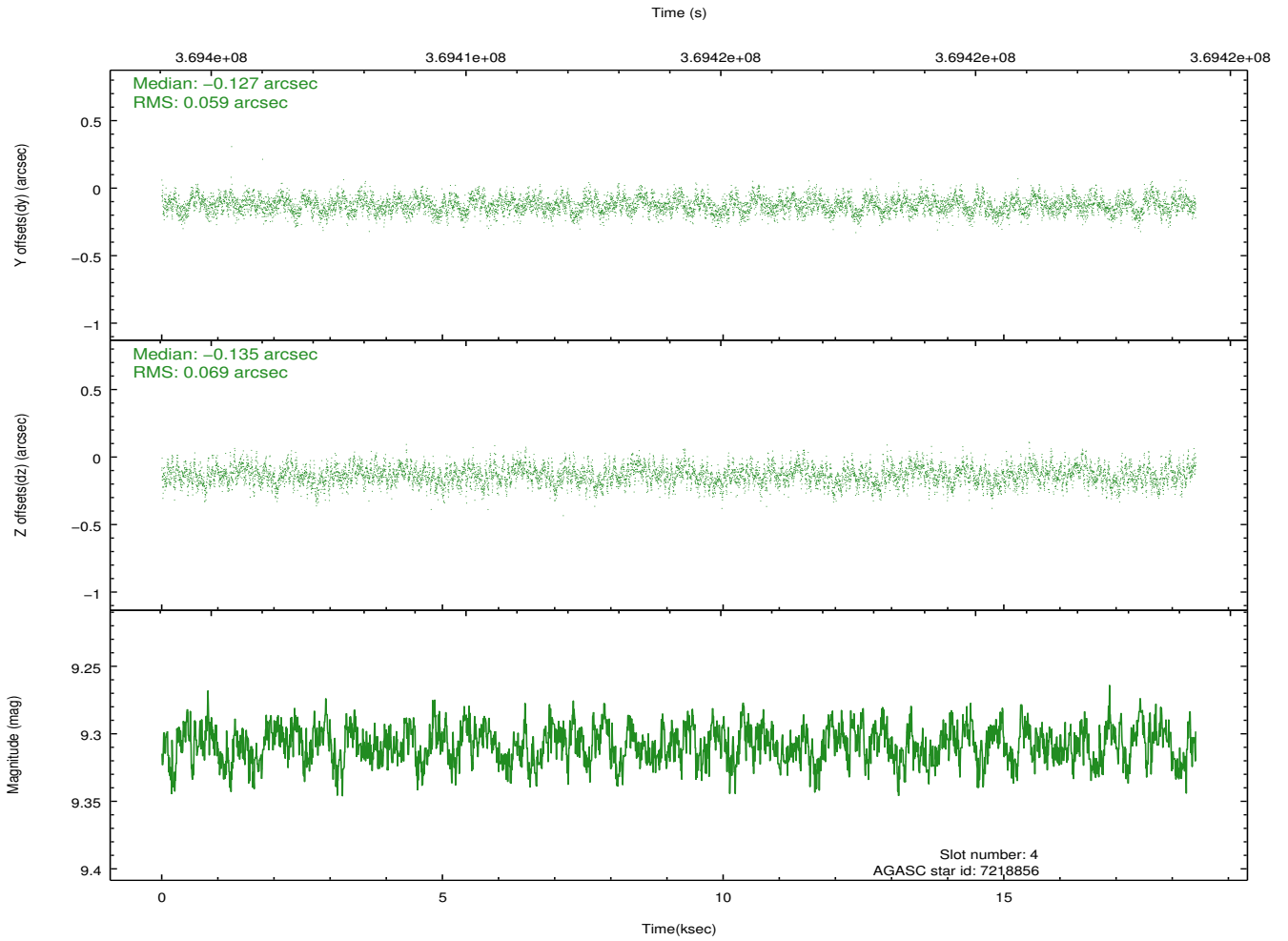
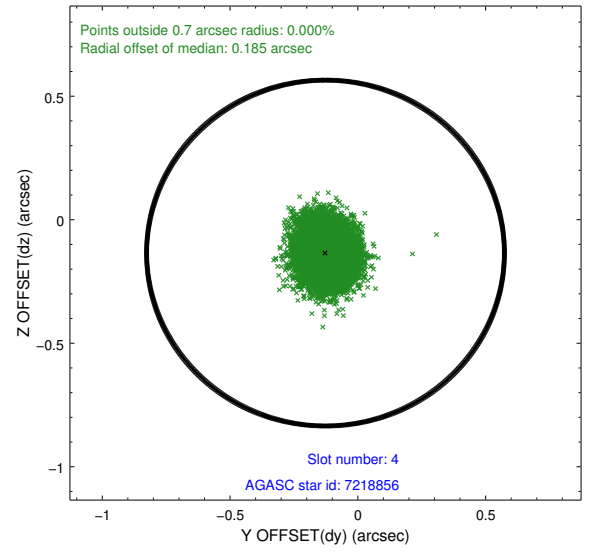
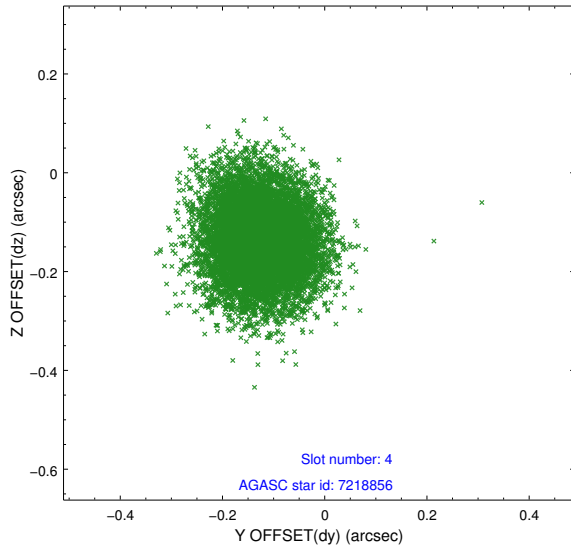
slot	status	id	mag	n_pts	med_dy	med_dz	dr1	dr2	ra	dec	mean_y	mean_z
0	FID	ACIS-S-2	6.96	4489	-0.025	-0.035	0.007	0.011	0.000000	0.000000	-765.55	-1733.43
1	FID	ACIS-S-4	7.04	4492	0.151	0.022	0.006	0.012	0.000000	0.000000	2147.80	174.88
2	FID	ACIS-S-5	7.08	4492	-0.157	0.023	0.008	0.013	0.000000	0.000000	-1818.25	168.80
3	GUIDE	7213152	7.86	8983	-0.010	-0.083	0.069	0.110	47.464729	1.484303	791.73	1293.07
4	GUIDE	7218856	9.31	8976	-0.127	-0.135	0.097	0.156	47.335767	1.452442	718.10	1765.63
5	GUIDE	7219552	8.55	8969	0.102	-0.270	0.078	0.129	47.238629	1.114495	-463.37	2220.61
6	GUIDE	7344352	8.18	8979	-0.089	0.209	0.078	0.128	48.363760	1.431751	321.76	-1912.95
7	GUIDE	7346744	8.83	8976	0.122	0.276	0.082	0.130	48.258548	1.281596	-183.23	-1489.08

2.4 Star Slots

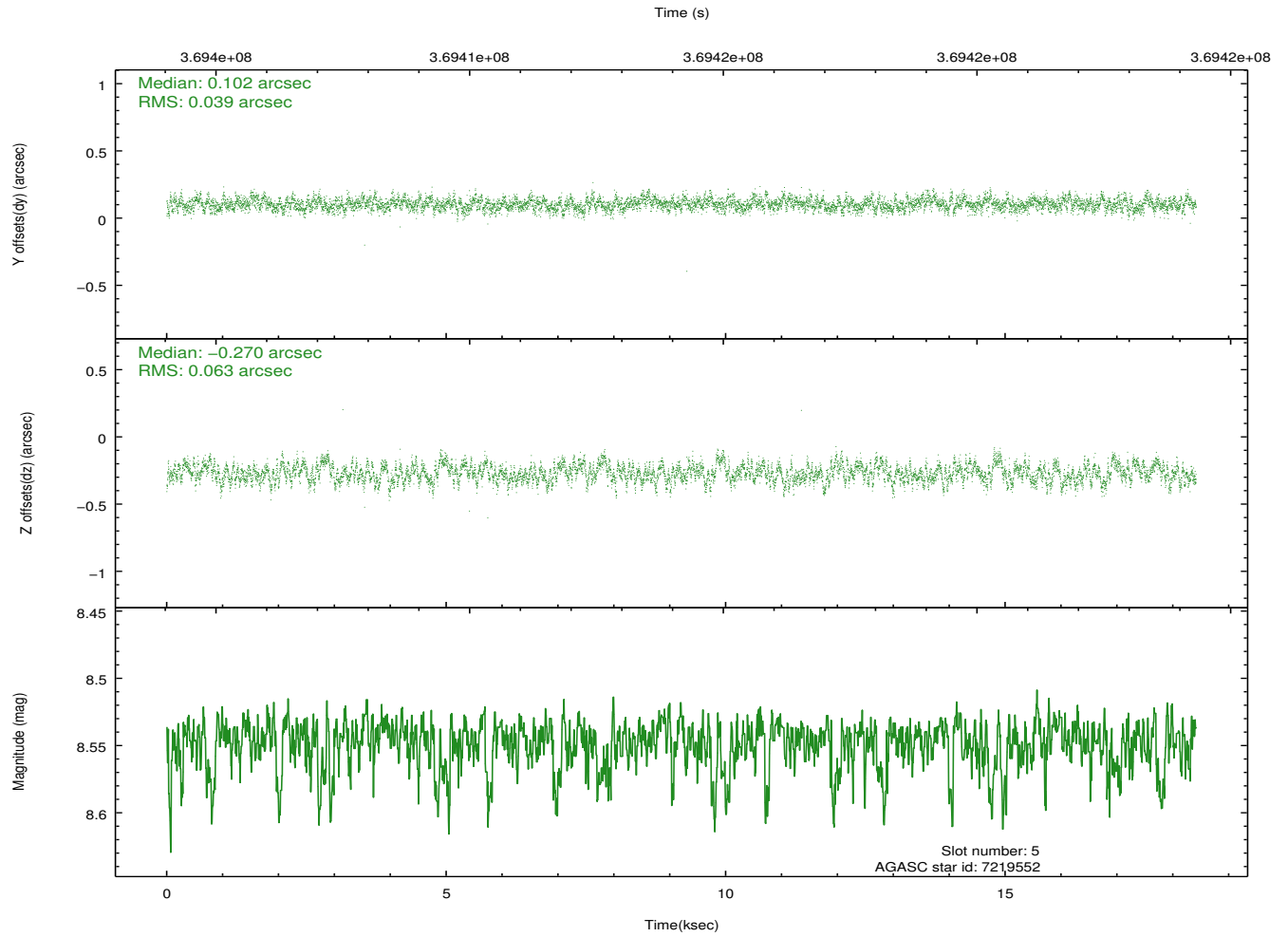
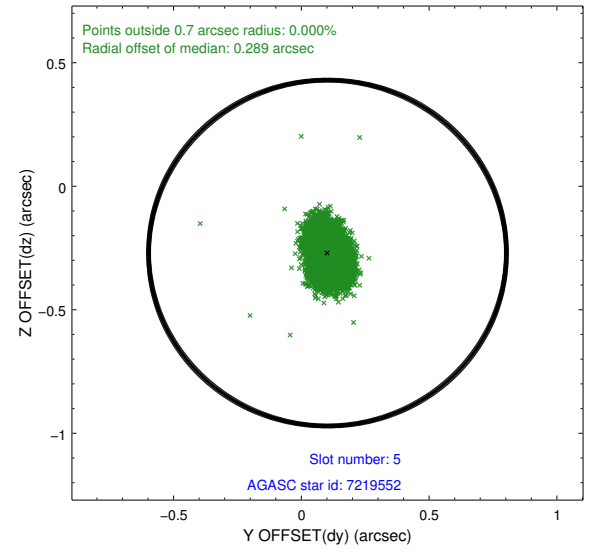
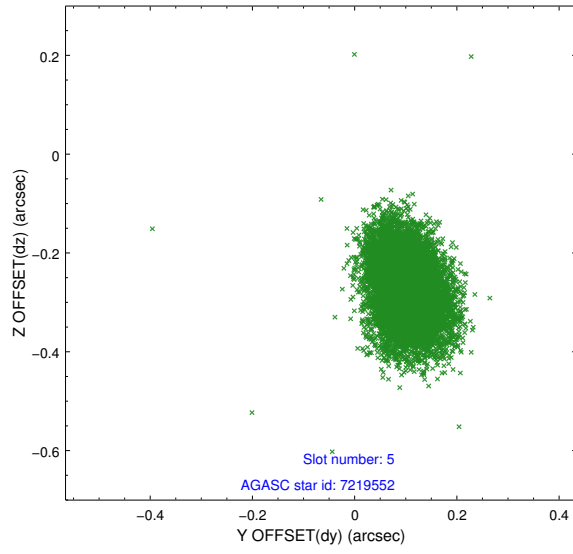
2.4.1 Slot 3



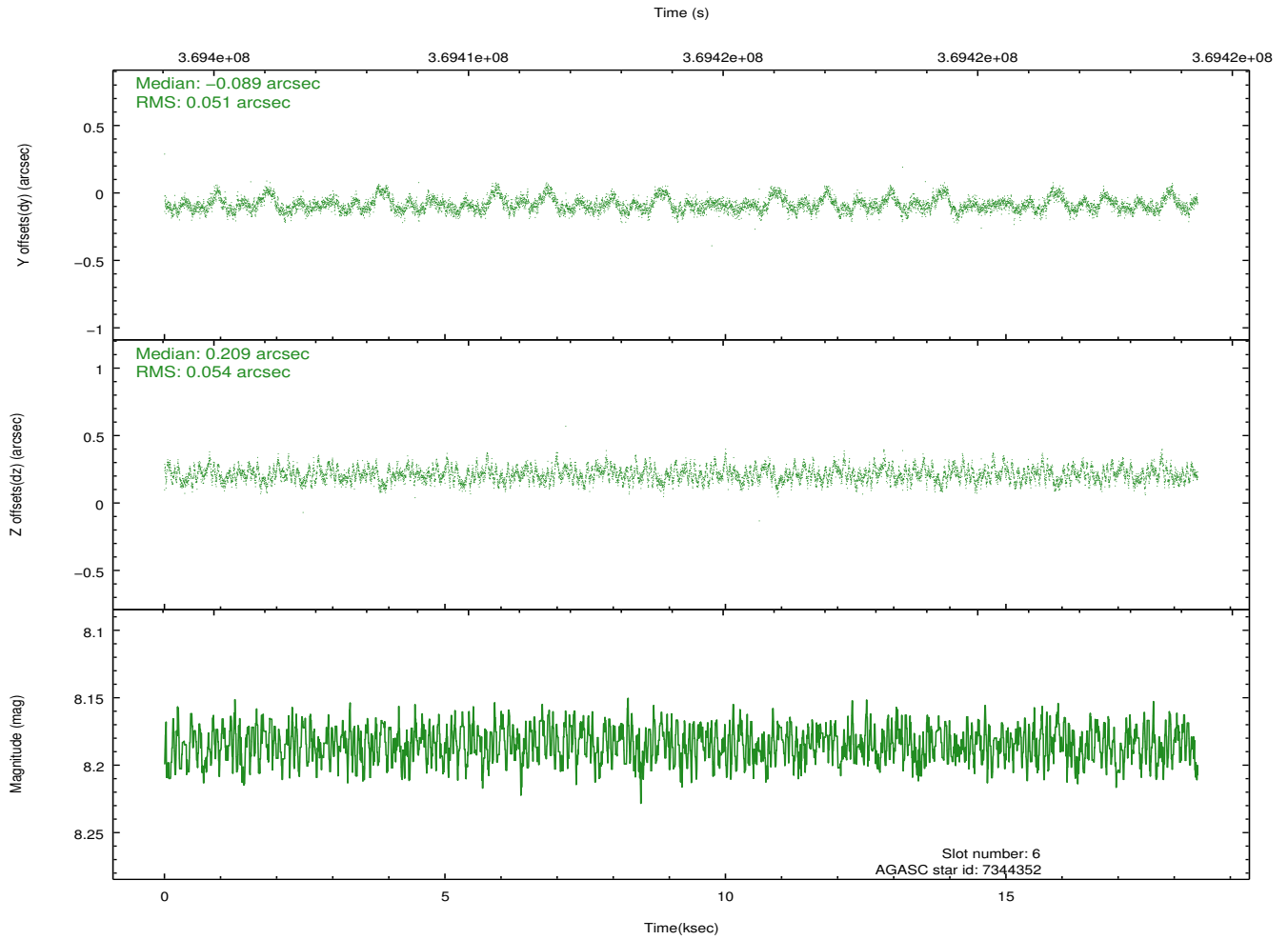
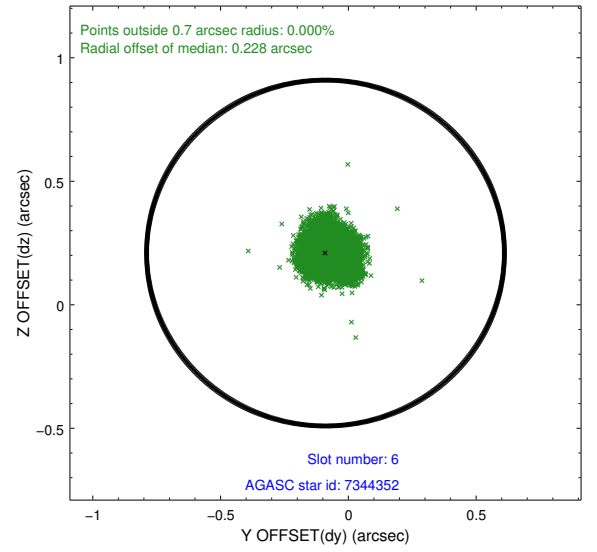
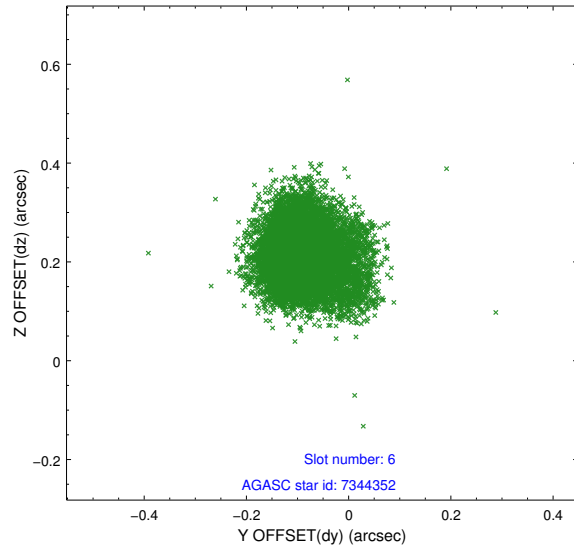
2.4.2 Slot 4



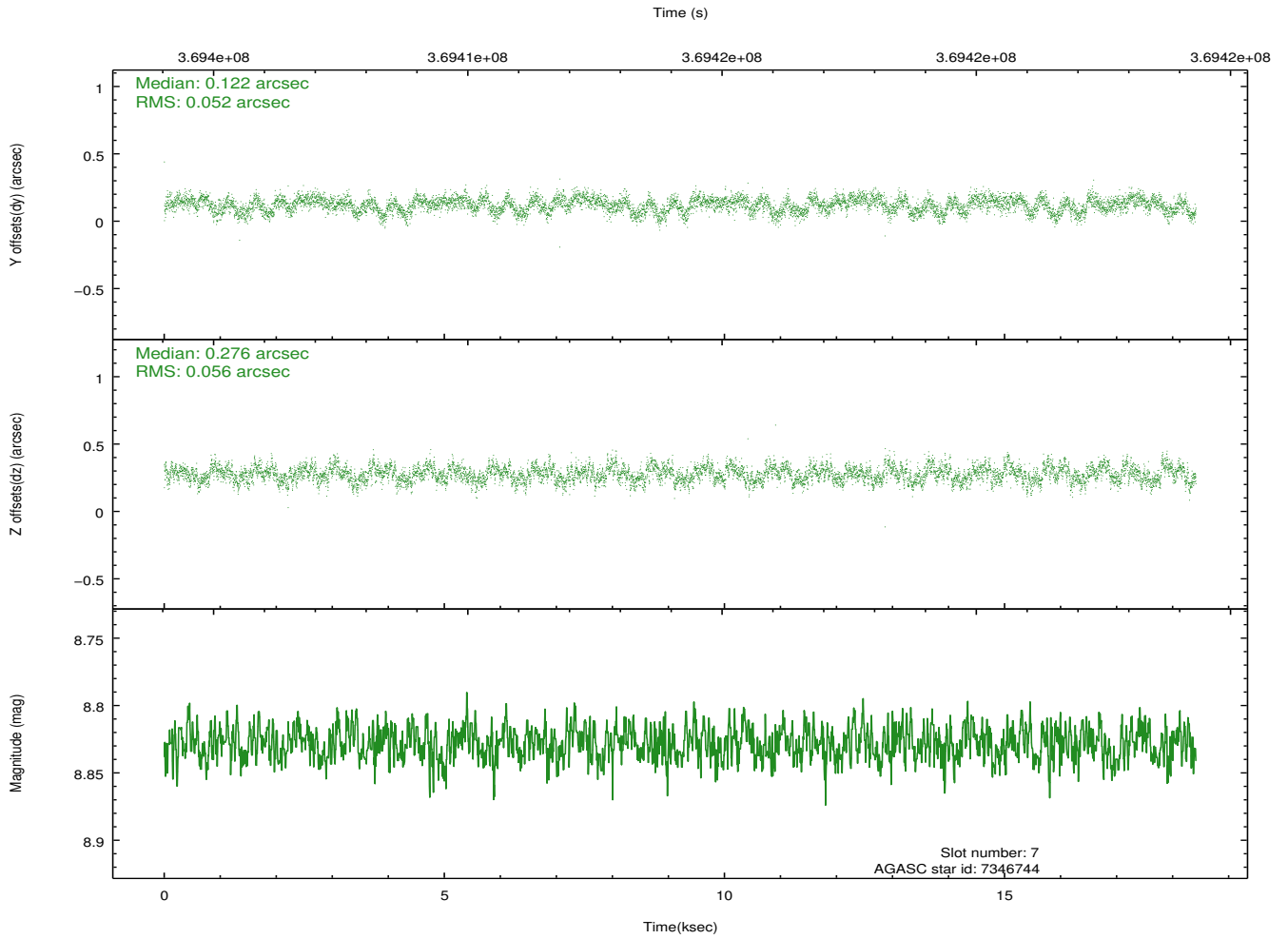
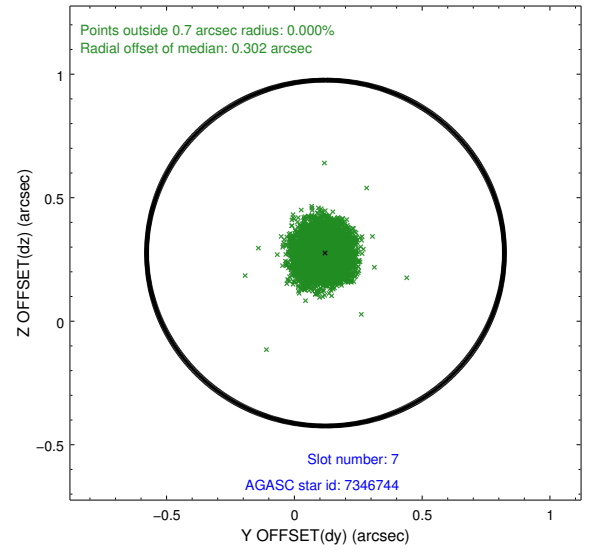
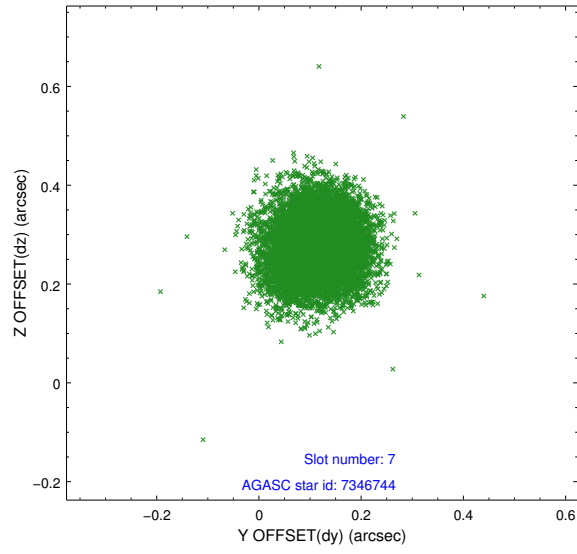
2.4.3 Slot 5



2.4.4 Slot 6

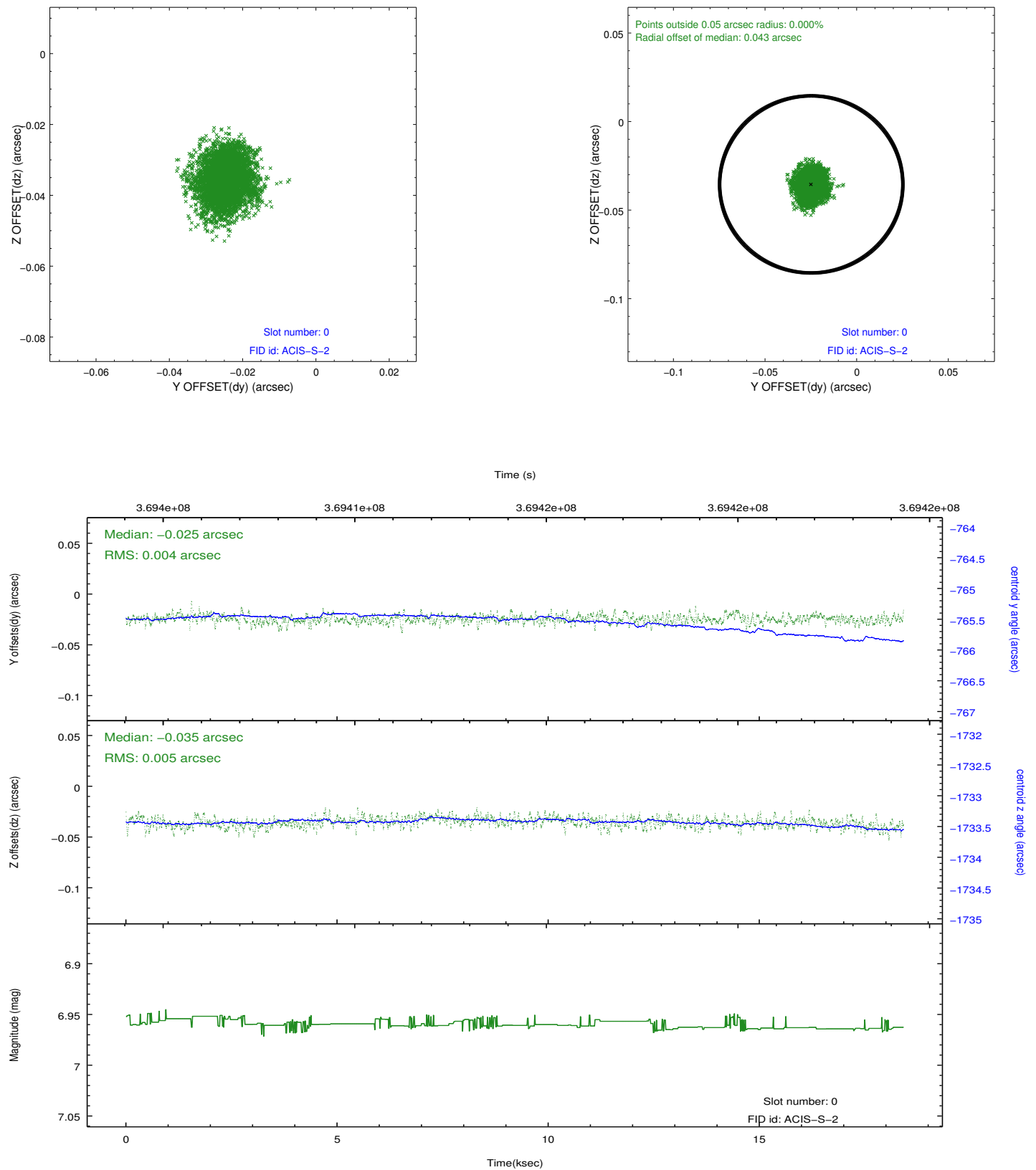


2.4.5 Slot 7

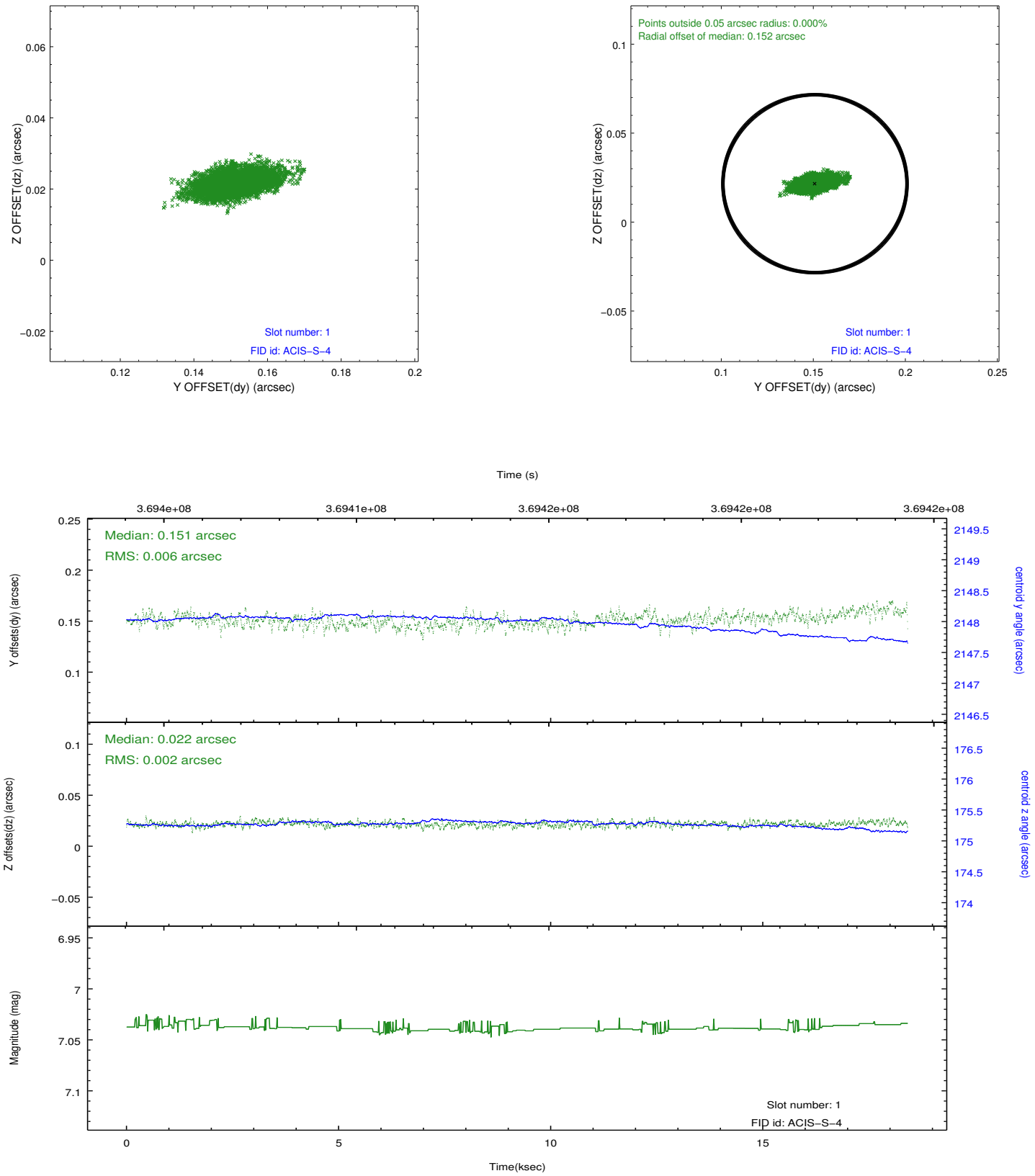


2.5 FID Slots

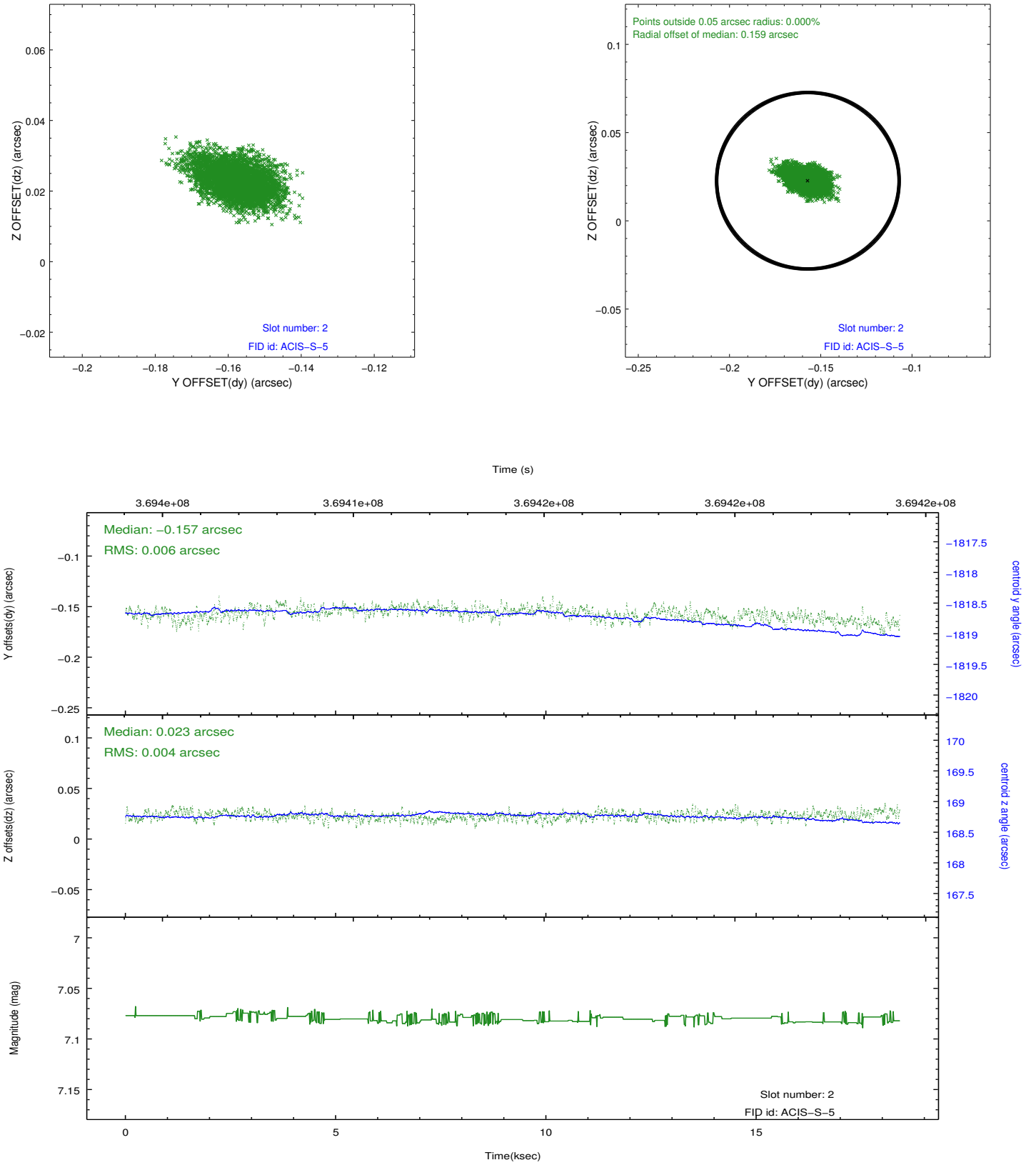
2.5.1 Slot 0



2.5.2 Slot 1



2.5.3 Slot 2



A Summary

A.1 Status

V&V Scientist	Jen Lauer
V&V Date (YYYY-MM-DD)	2012.06.17
V&V Edition	1
V&V Disposition and Status	OK
V&V Charge Time	18.268799932003

A.2 Comments