

V&V Reference Report

L2 ASCDS Version : 8.4.5

Observation 11277 - L2 Version 2
Chandra X-Ray Center

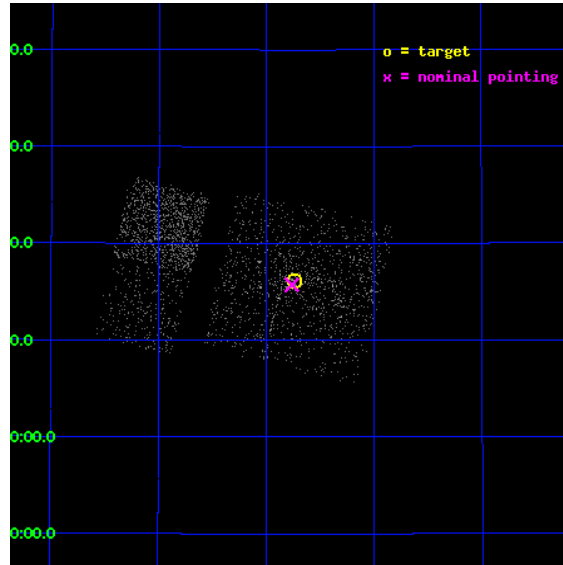
L2 Processing Date : Jun 19 2012

Contents

1	Front	2
2	OBI Primary	3
2.1	OBI	3
2.1.1	Images	3
2.1.2	Bias	3
2.1.3	Parameters	4
2.1.4	Events	4
2.2	Compared Parameters	5
2.3	Aspect	6
2.4	Star Slots	9
2.4.1	Slot 3	9
2.4.2	Slot 4	10
2.4.3	Slot 5	11
2.4.4	Slot 6	12
2.4.5	Slot 7	13
2.5	FID Slots	14
2.5.1	Slot 0	14
2.5.2	Slot 1	15
2.5.3	Slot 2	16
3	OBI Secondary	17
3.1	OBI	17
3.1.1	Images	17
3.1.2	Bias	17
3.1.3	Parameters	18
3.1.4	Events	18
A	Summary	19
A.1	Status	19
A.2	Comments	19

1 Front

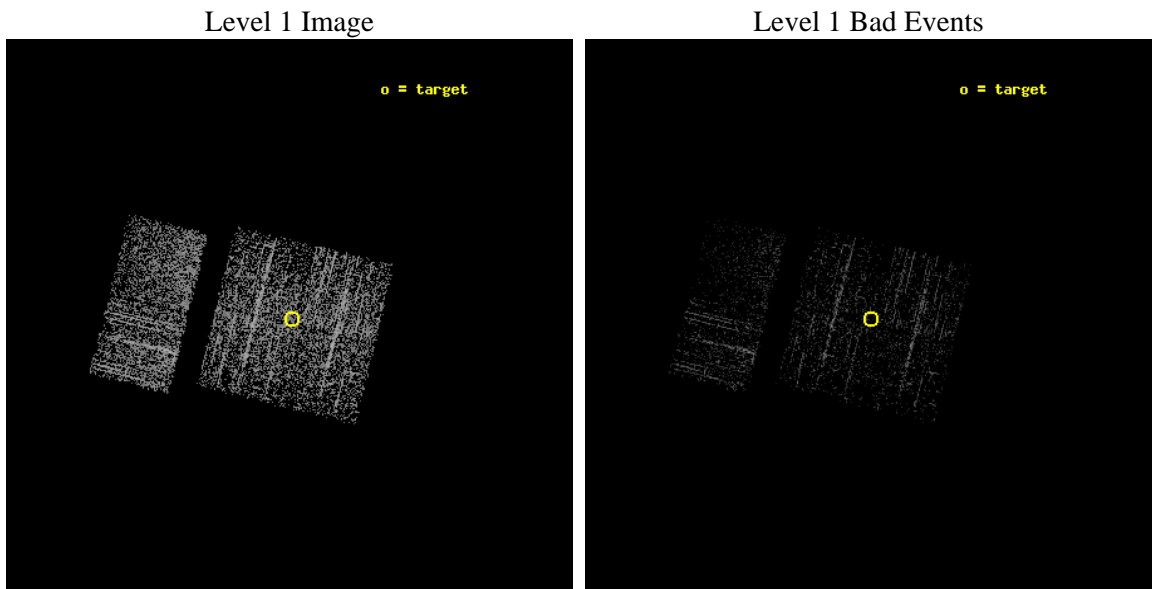
seq_num	600796	Sequence number
obs_id	11277	Observation id
title	Monitoring M31 for BHXNe	Proposal title
observer	Dr. Michael Garcia	Principal investigator
object	M31	Source name
dtcycle	0	
cycle	P	events are from which exps? P[rimary] S[econdar
ra_targ	10.685	Observer's specified target RA [deg]
dec_targ	41.268972	Observer's specified target Dec [deg]
ra_nom	10.690668211641	Nominal RA [deg]
dec_nom	41.262097234117	Nominal Dec [deg]
roll_nom	283.9048422132	Nominal Roll [deg]
revision	2	Processing version of data
ontime	982.96665638685	Sum of GTIs [s]
livetime	154.74266241764	Livetime [s]
ontime0	982.84353637695	Sum of GTIs [s]
ontime1	982.88457638025	Sum of GTIs [s]
ontime2	982.92561638355	Sum of GTIs [s]
ontime3	982.96665638685	Sum of GTIs [s]
ontime6	983.04873639345	Sum of GTIs [s]
ontime7	983.00769639015	Sum of GTIs [s]
l2events	3032	Number of level 2 events



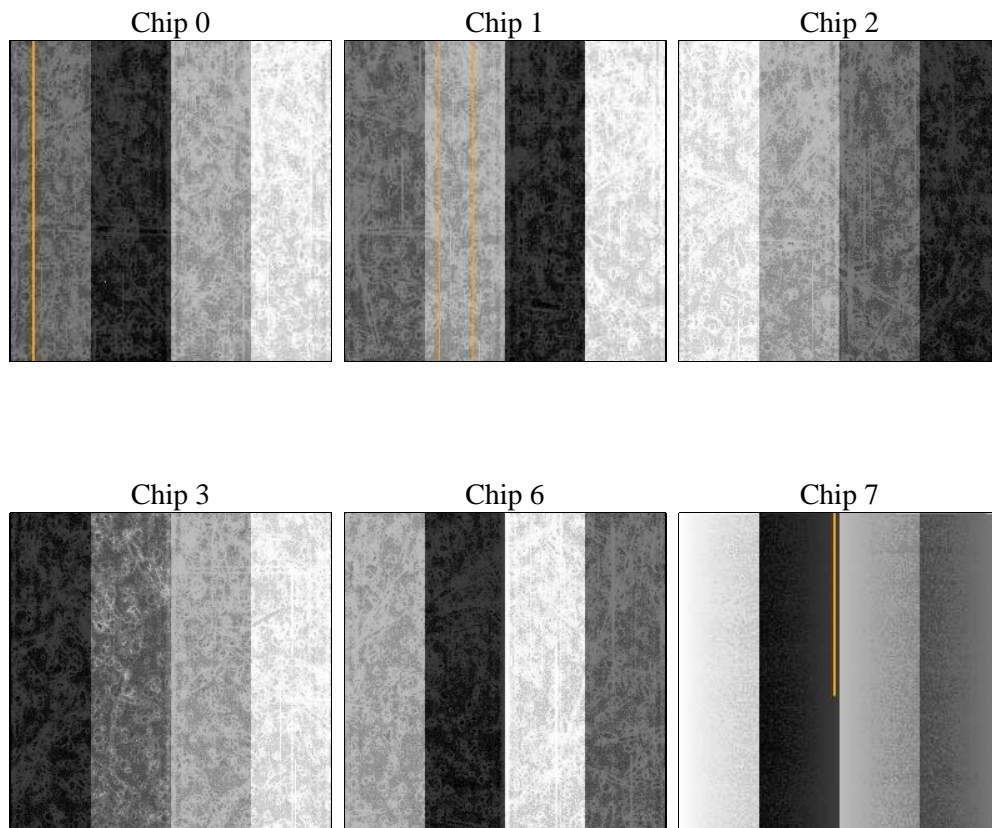
2 OBI Primary

2.1 OBI

2.1.1 Images



2.1.2 Bias



2.1.3 Parameters

obi_num	0	Obi number	sched_exp_time	5000.000000	[s] Scheduled observation exposure time
ascdsver	8.4.5	Processing system revision	ontime	982.96665638685	Sum of GTIs [s]
caldsver	4.4.10	 	ontime0	982.84353637695	Sum of GTIs [s]
date	2012-06-19T06:59:36	Date and time of file creation	ontime1	982.88457638025	Sum of GTIs [s]
revision	2	Processing version of data	ontime2	982.92561638355	Sum of GTIs [s]
			ontime3	982.96665638685	Sum of GTIs [s]
			ontime6	983.04873639345	Sum of GTIs [s]
			ontime7	983.00769639015	Sum of GTIs [s]
			l1events	28706	Number of level 1 events

2.1.4 Events

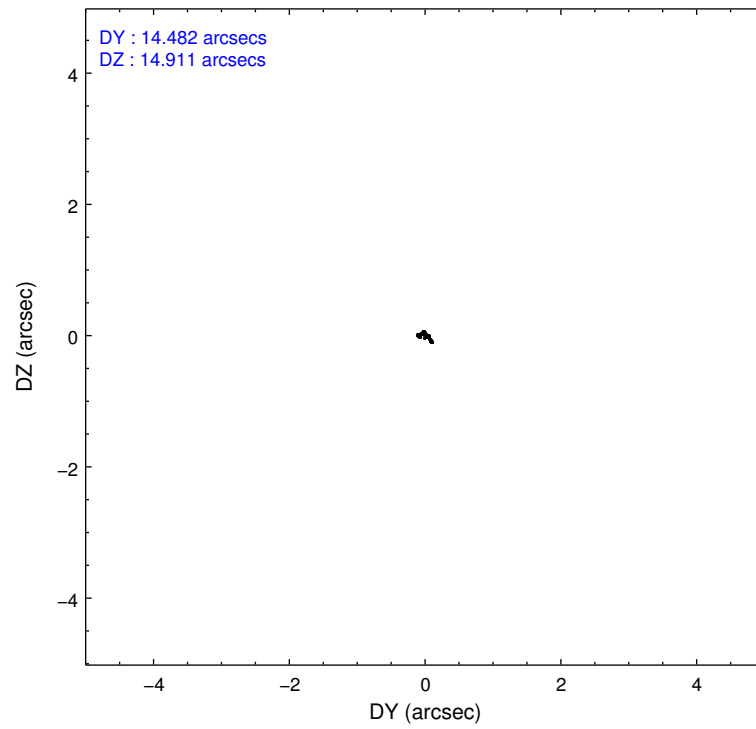
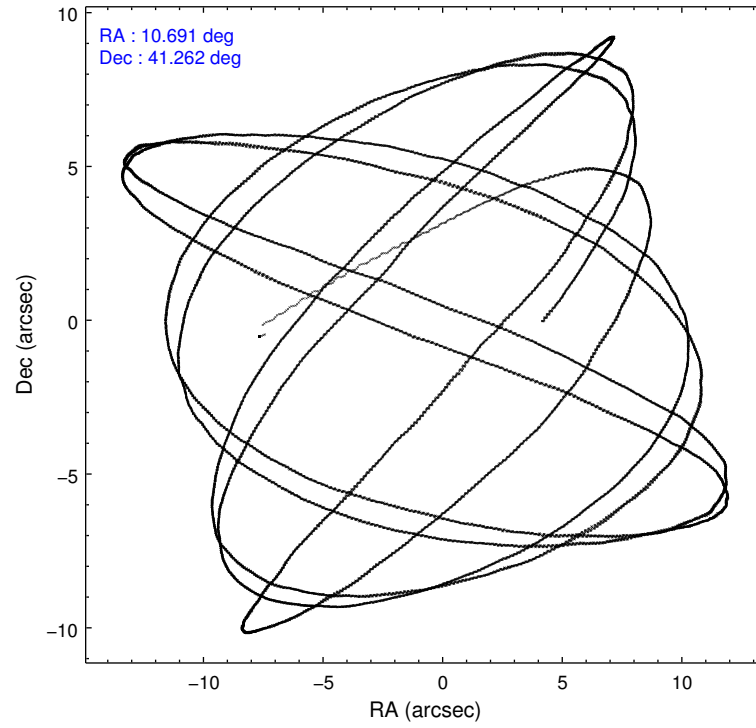
	ccd 0	ccd 1	ccd 2	ccd 3	ccd 6	ccd 7
level 1 events	3824	5559	4978	4317	5900	4128
rejected events	3412	4967	4363	3904	5587	2973
rejected %	89%	89%	87%	90%	94%	72%

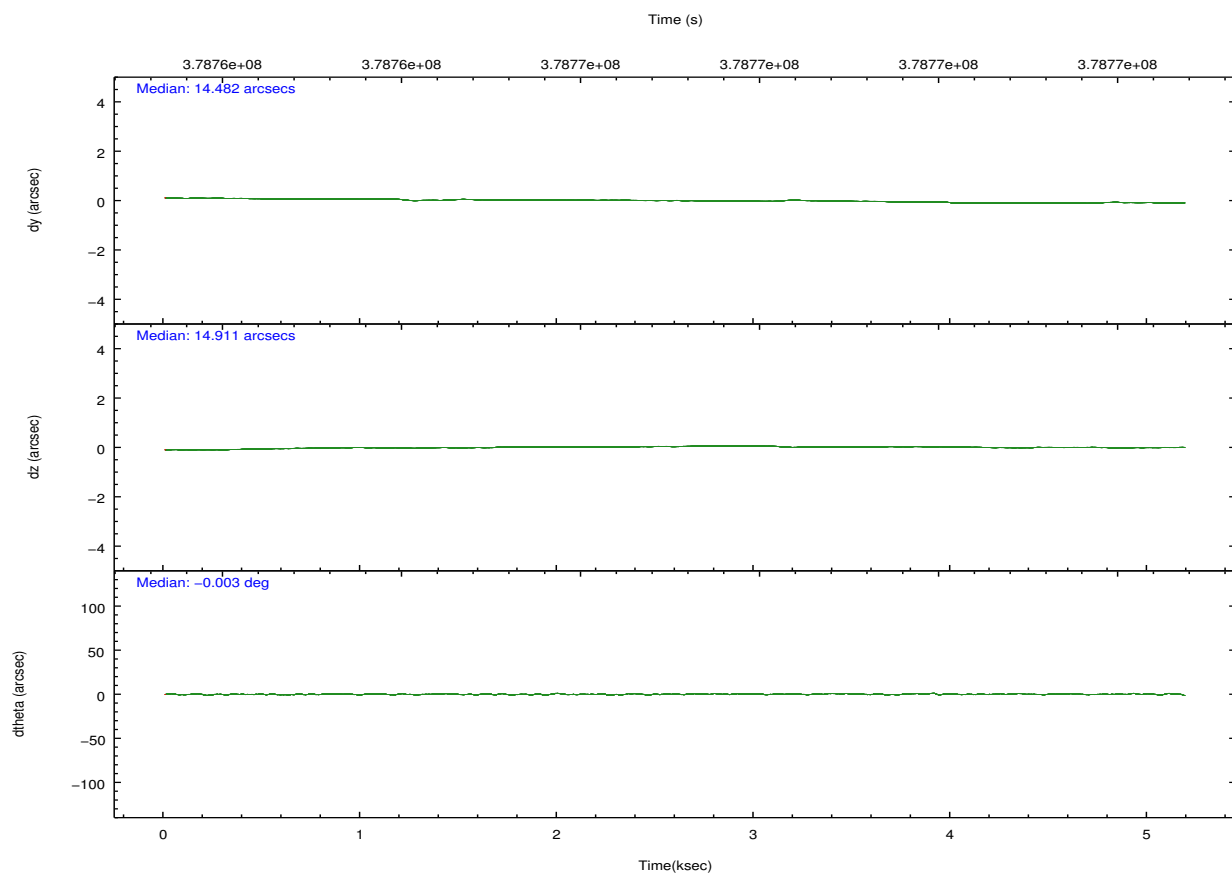
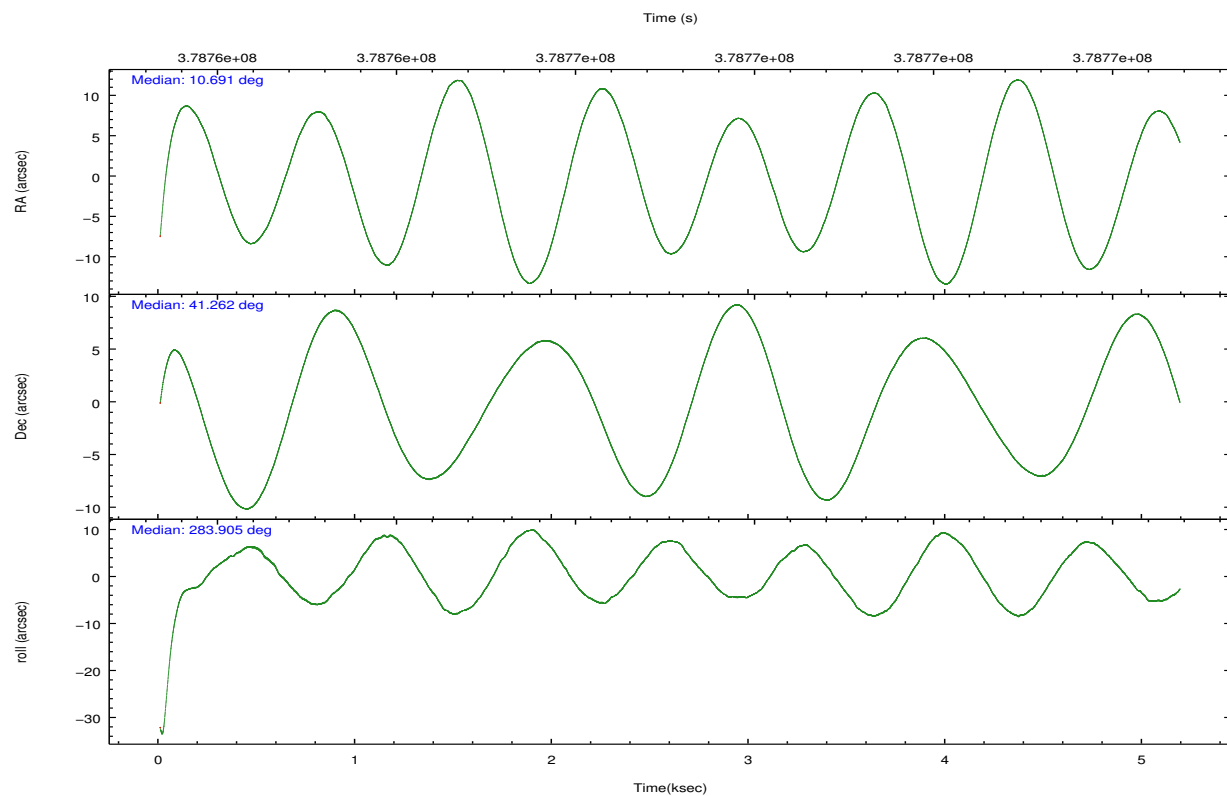
	ccd 0	ccd 1	ccd 2	ccd 3	ccd 6	ccd 7
grade 0 events	156	260	328	190	80	123
	4%	4%	6%	4%	1%	2%
grade 1 events	1	5	10	3	0	3
	0%	0%	0%	0%	0%	0%
grade 2 events	98	134	136	98	99	294
	2%	2%	2%	2%	1%	7%
grade 3 events	60	80	56	45	53	132
	1%	1%	1%	1%	0%	3%
grade 4 events	56	58	59	48	43	118
	1%	1%	1%	1%	0%	2%
grade 5 events	145	160	191	144	181	397
	3%	2%	3%	3%	3%	9%
grade 6 events	86	122	81	74	74	646
	2%	2%	1%	1%	1%	15%
grade 7 events	3222	4740	4117	3715	5370	2415
	84%	85%	82%	86%	91%	58%

2.2 Compared Parameters

Parameter	Planned	Actual	Parameter	Planned	Actual
Instrument	ACIS	ACIS	Obspar format version number	7	7
Detector	ACIS-012367	ACIS-012367	Obspar file type	PREDICTED	ACTUAL
Grating	NONE	NONE	Obspar update status	NONE	UPDATED
Data mode	VFAINT	VFAINT	CCD I0 on	Y	Y
Observation mode	POINTING	POINTING	CCD I1 on	Y	Y
[deg] Pointing RA	10.665085	10.69066821164063	CCD I2 on	Y	Y
[deg] Pointing Dec	41.281789	41.26209723411747	CCD I3 on	Y	Y
[deg] Pointing Roll	283.713140	283.9048422132004	CCD S0 on	N	N
[mm] SIM focus pos	-0.782348	-0.7809083437167272	CCD S1 on	N	N
[mm] SIM defocus	0	0.001439871863259334	CCD S2 on	O2	Y
[mm] SIM translation stage pos	-233.592463	-233.5874344608287	CCD S3 on	O1	Y
[mm] SIM translation stage offset	0	-0.005018542100998502	CCD S4 on	N	N
[s] Observation start time (MET)	378764132.184000	378762720.62781	CCD S5 on	N	N
Observation start date	2010-01-01T20:14:26	2010-01-01T19:52:00	Number of optional ACIS chips dropped	0	0
[s] Observation end time (MET)	378769132.184000	378769756.74067	On-chip summing requested	N	N
Observation end date	2010-01-01T21:37:46	2010-01-01T21:49:16	Subarray requested	NONE	NONE
Read mode	TIMED	TIMED	Alternating exposures requested	Y	Y
			[s] Primary exposure time	0.600000	0.6
			[s] Secondary exposure time	0.000000	3.2
			Duty cycle	5	5

2.3 Aspect



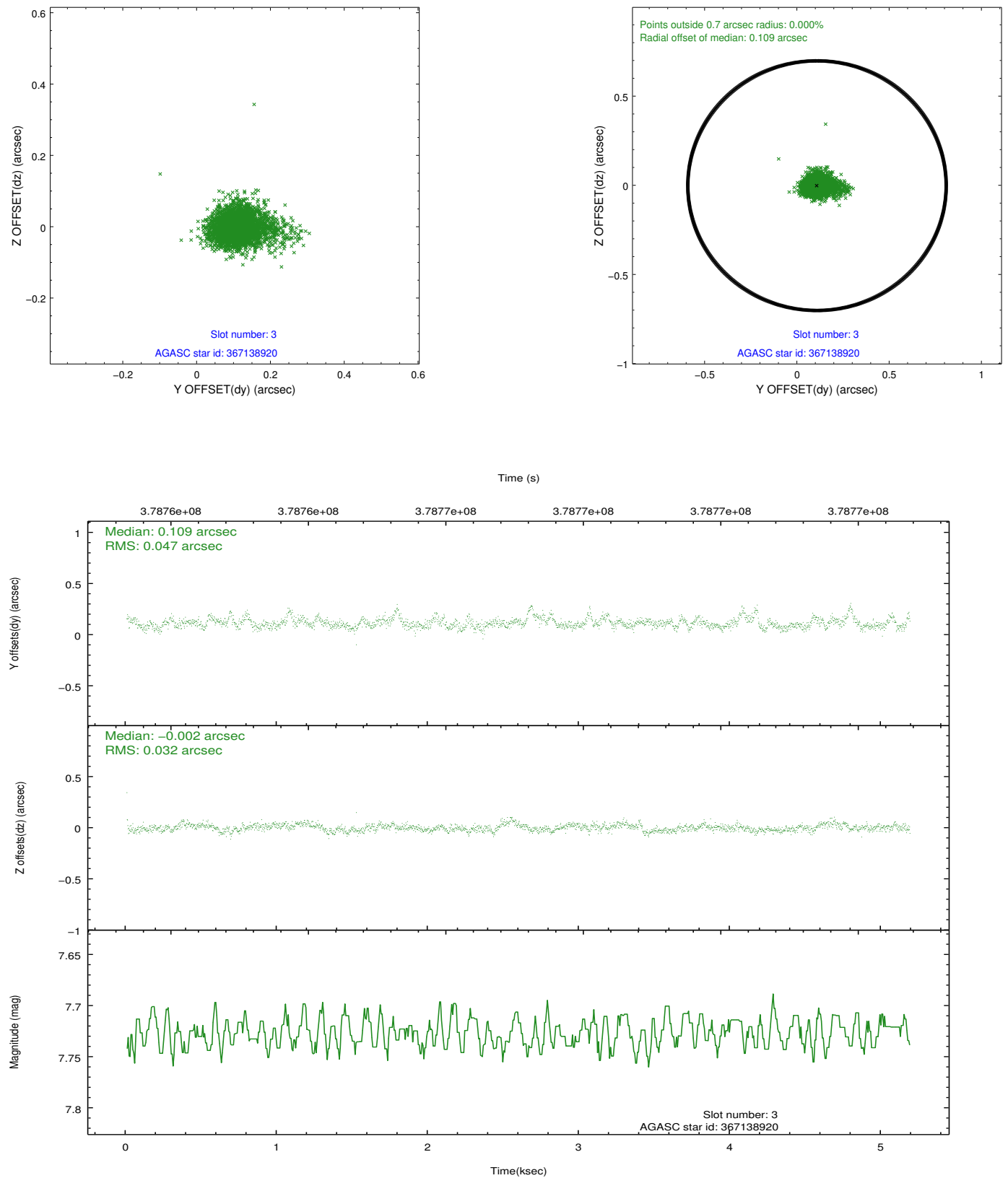


Slot Statistics

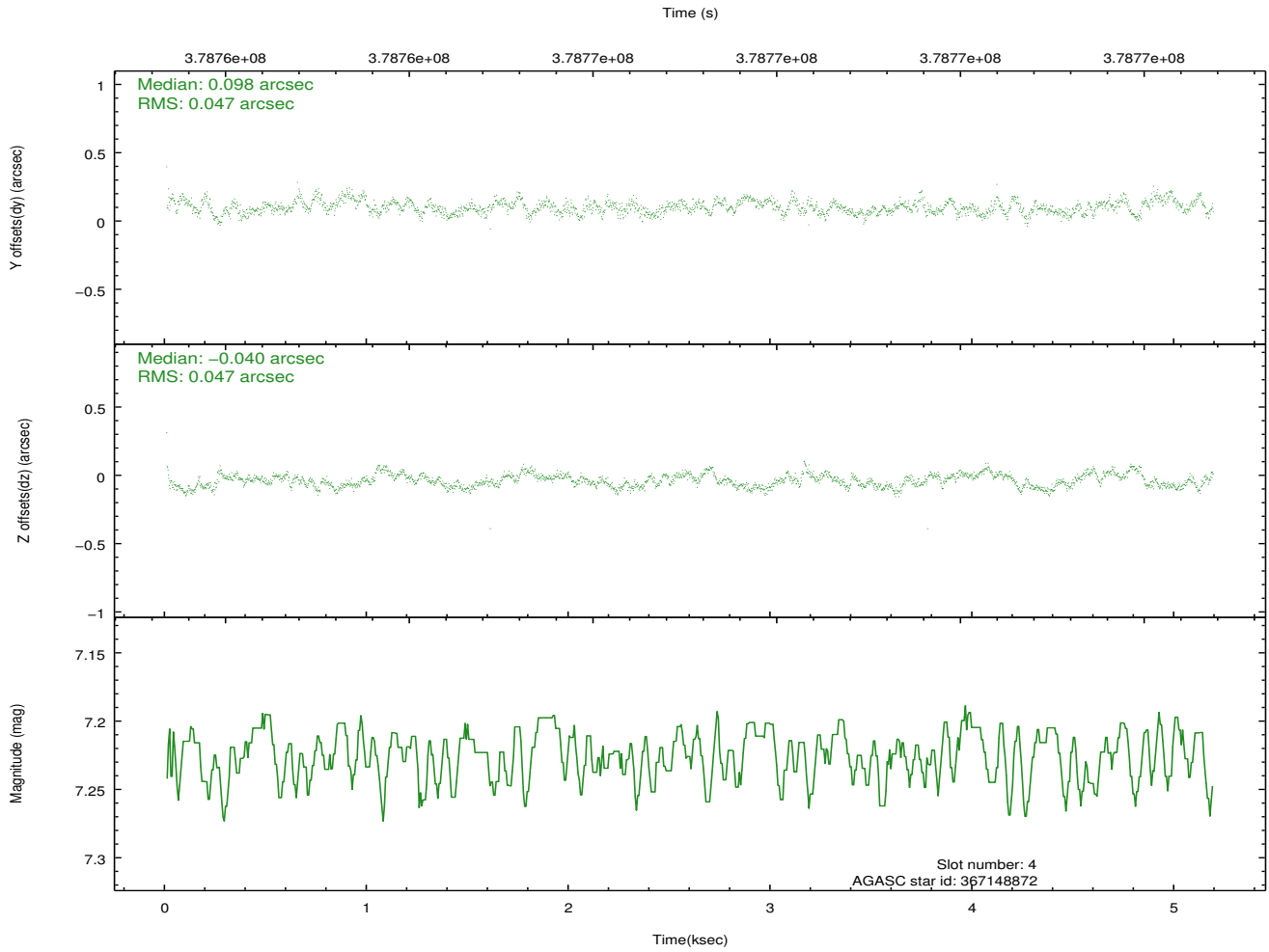
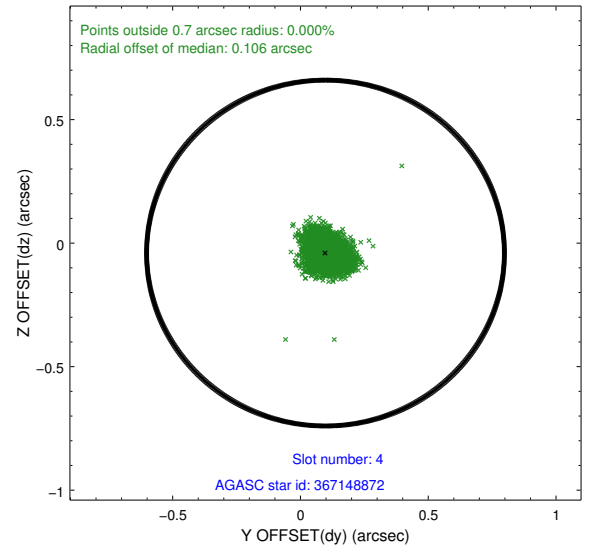
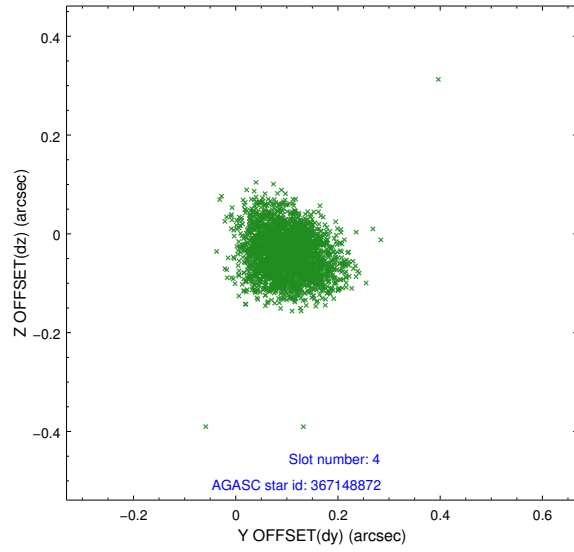
slot	status	id	mag	n_pts	med_dy	med_dz	dr1	dr2	ra	dec	mean_y	mean_z
0	FID	ACIS-I-1	7.07	1265	0.032	-0.003	0.006	0.011	0.000000	0.000000	925.04	-838.50
1	FID	ACIS-I-5	7.06	1265	-0.215	0.037	0.005	0.009	0.000000	0.000000	-1822.69	1058.41
2	FID	ACIS-I-6	7.07	1265	0.091	0.037	0.007	0.011	0.000000	0.000000	389.34	1704.27
3	GUIDE	367138920	7.73	2529	0.109	-0.002	0.056	0.103	11.513485	40.808909	2192.11	1845.57
4	GUIDE	367148872	7.22	2530	0.098	-0.040	0.070	0.112	10.505940	40.688258	1974.24	-928.26
5	GUIDE	367657896	8.99	2525	-0.079	0.050	0.132	0.198	11.197765	41.313576	226.94	1426.98
6	GUIDE	367674552	8.85	2527	0.000	0.020	0.085	0.138	11.016238	41.570845	-788.16	1166.44
7	GUIDE	367663272	9.28	2524	-0.138	-0.037	0.095	0.152	10.656279	41.699429	-1466.30	332.80

2.4 Star Slots

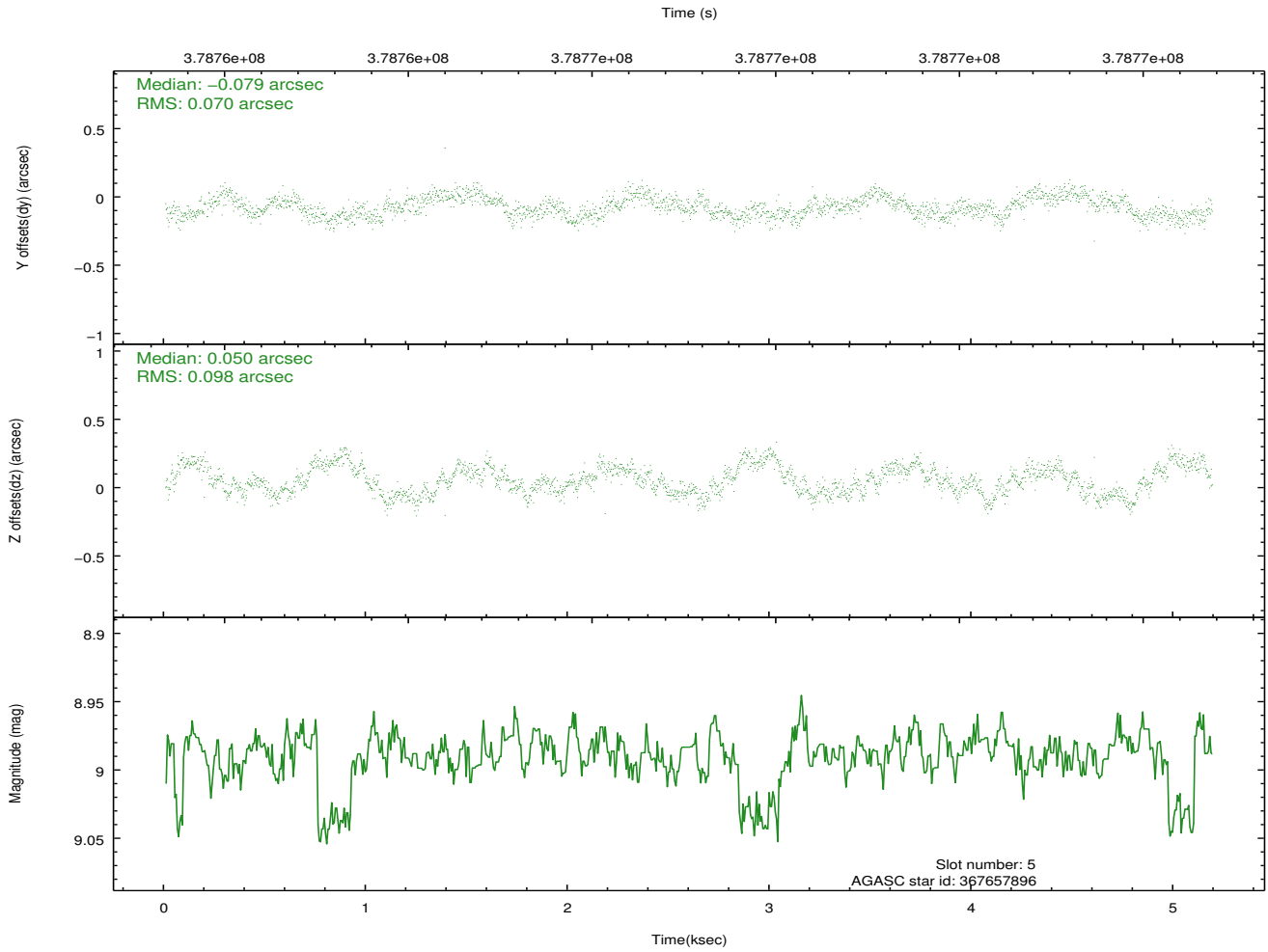
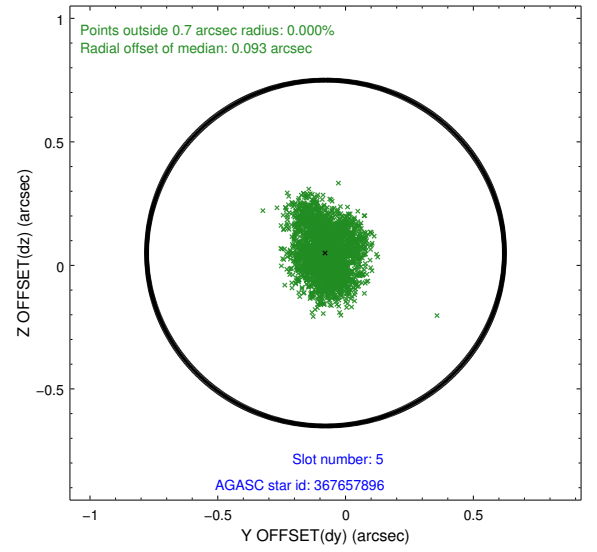
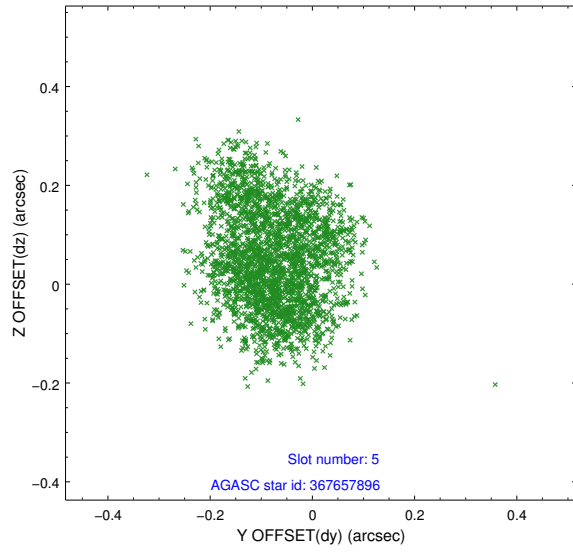
2.4.1 Slot 3



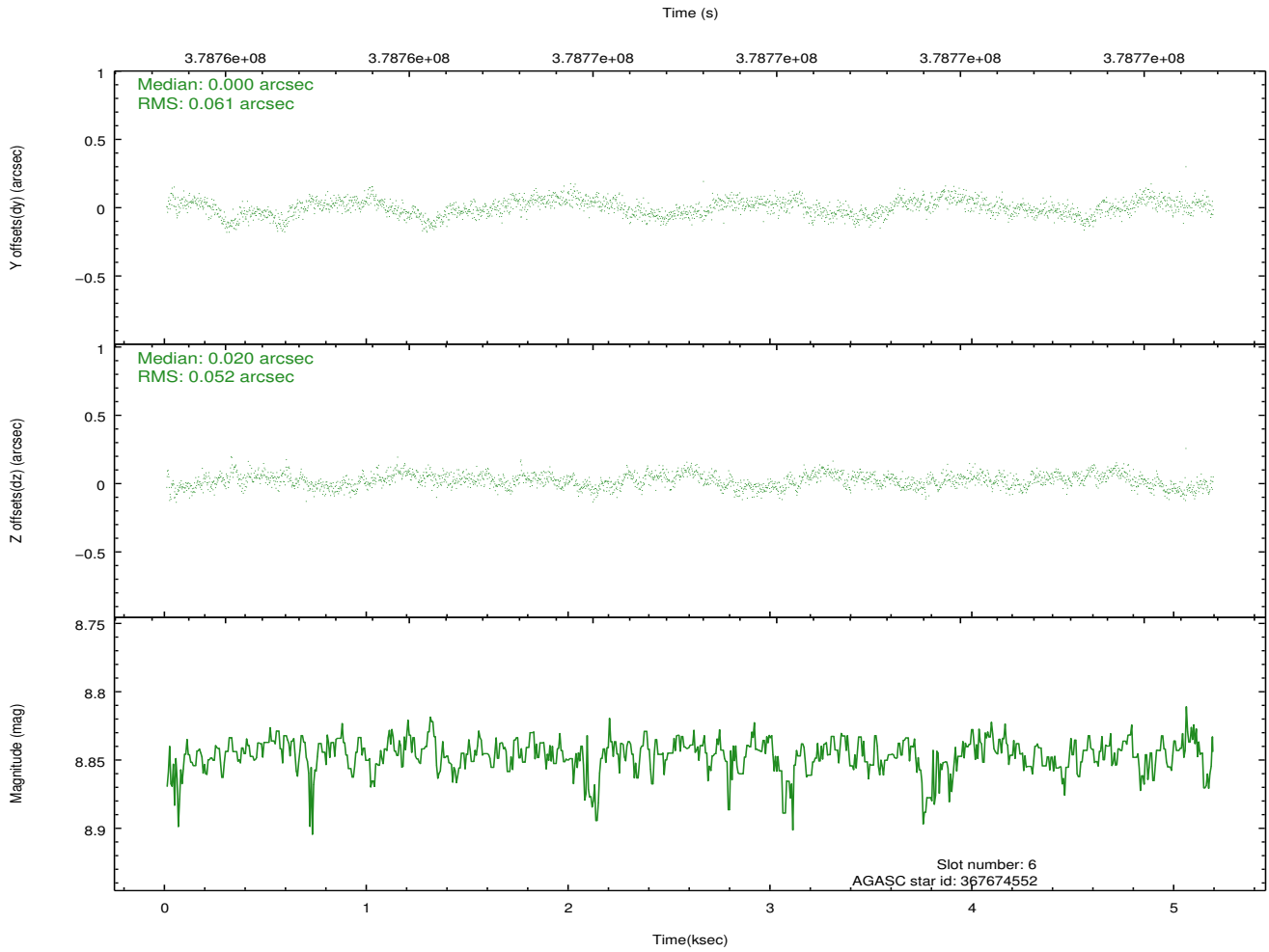
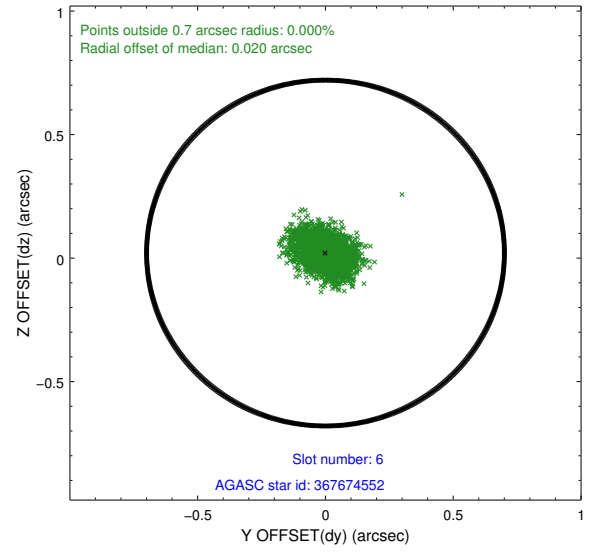
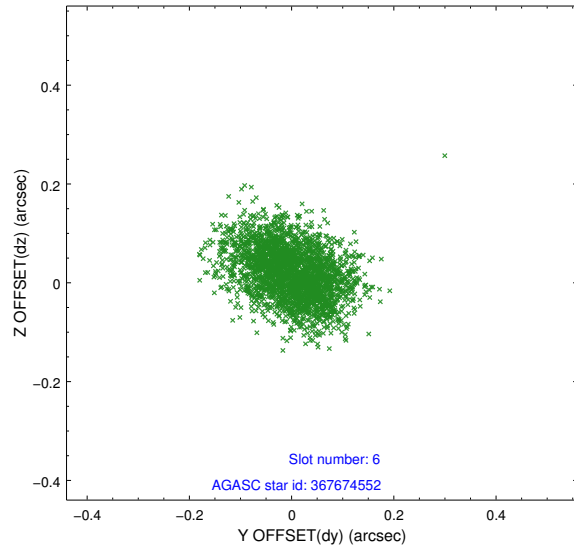
2.4.2 Slot 4



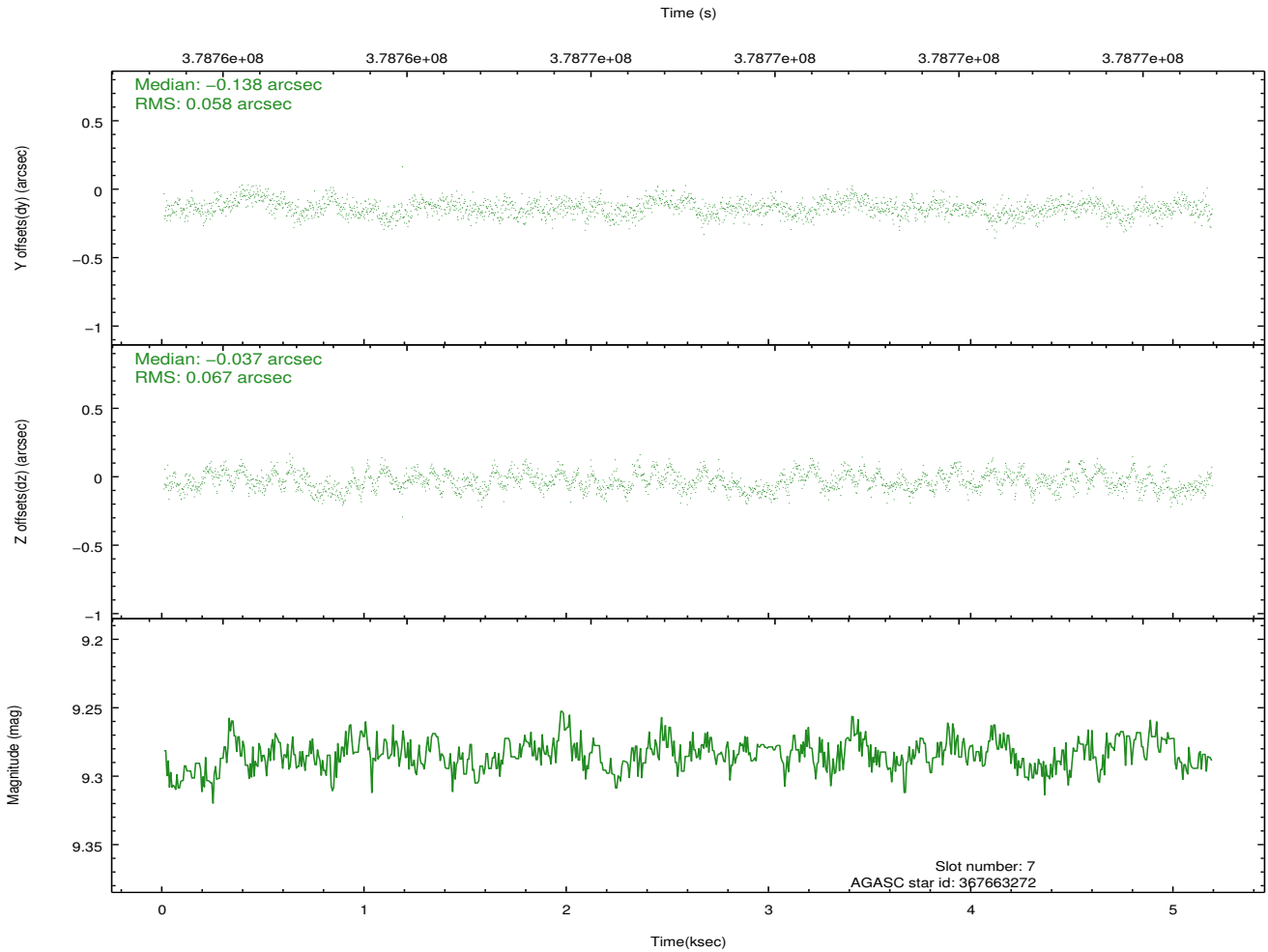
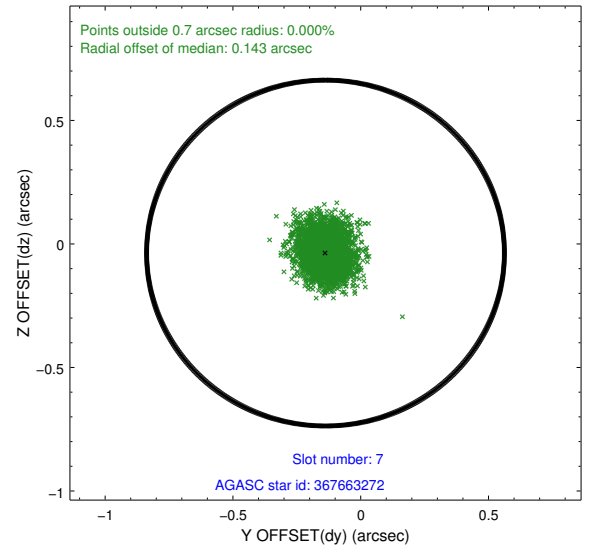
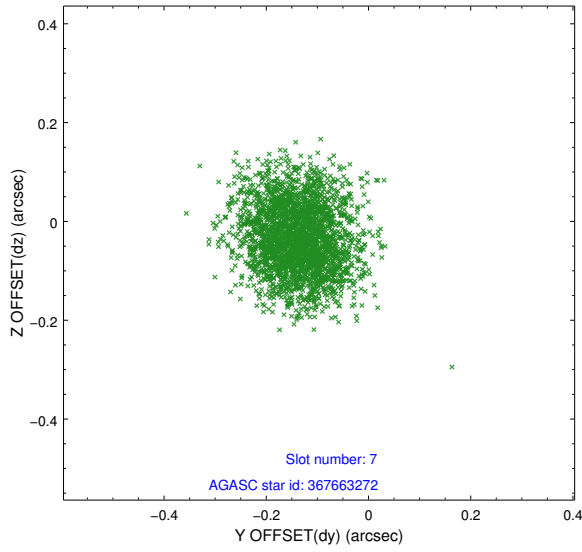
2.4.3 Slot 5



2.4.4 Slot 6

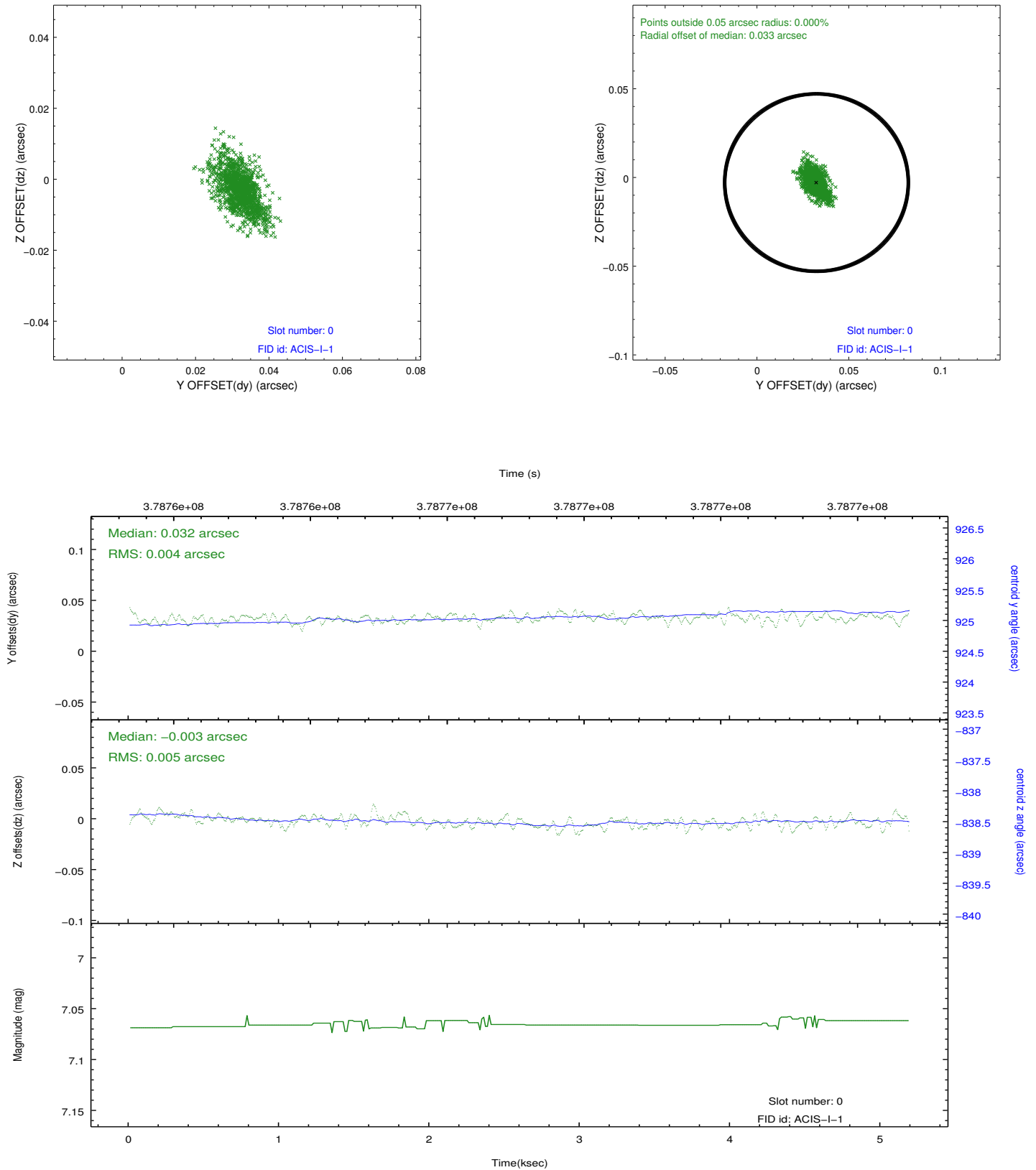


2.4.5 Slot 7

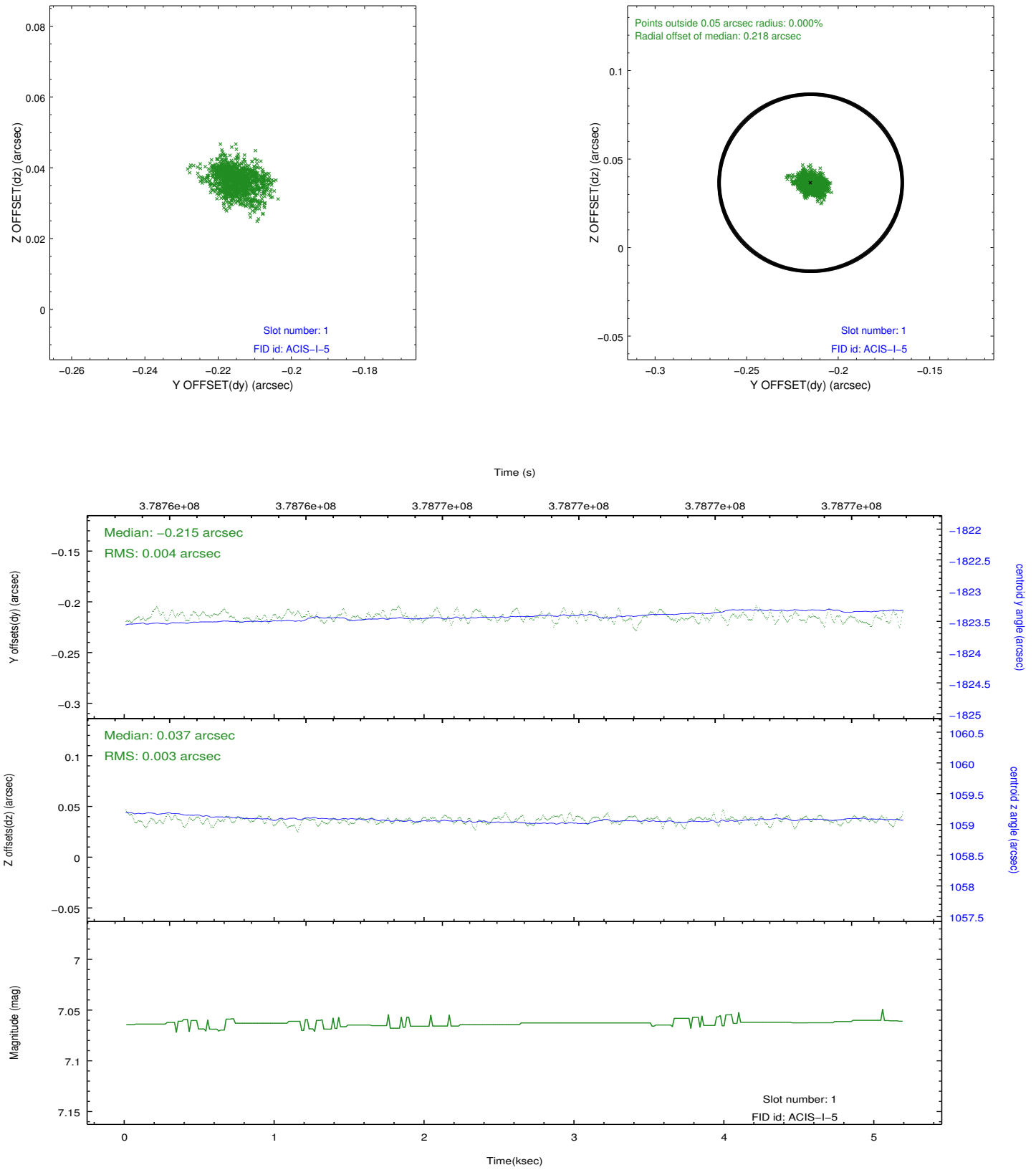


2.5 FID Slots

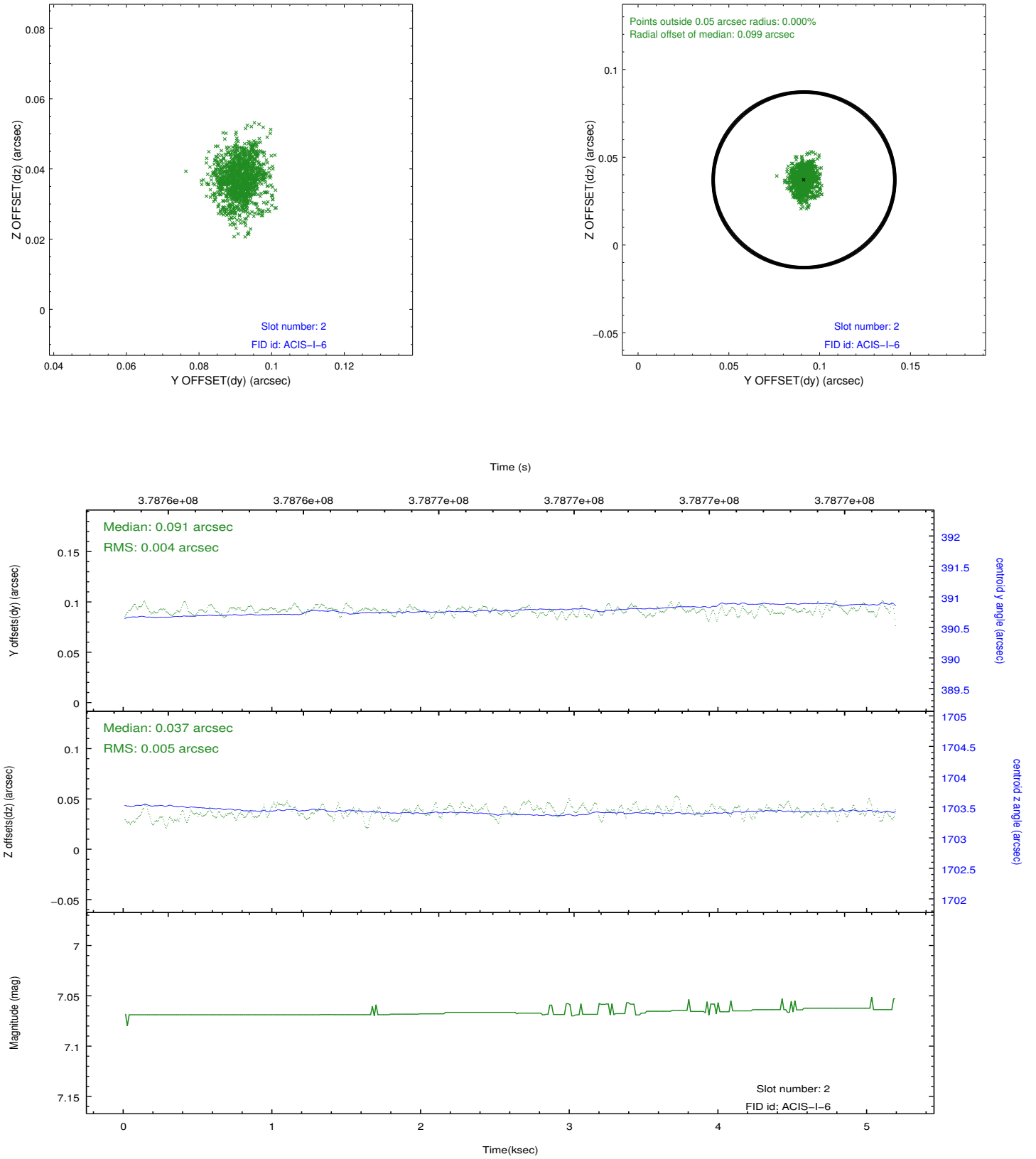
2.5.1 Slot 0



2.5.2 Slot 1



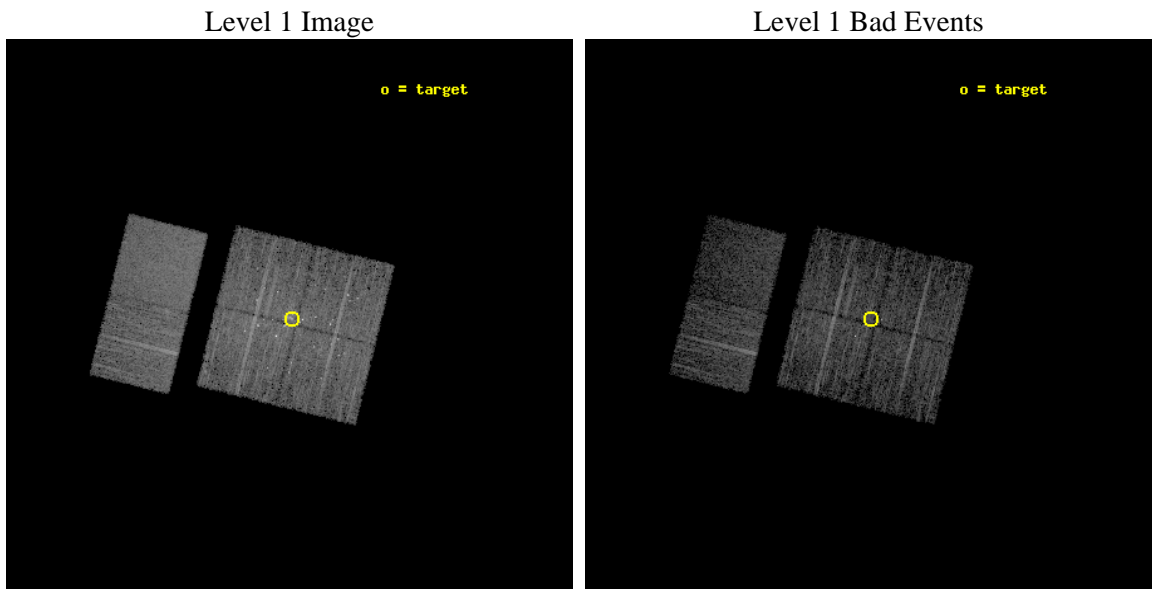
2.5.3 Slot 2



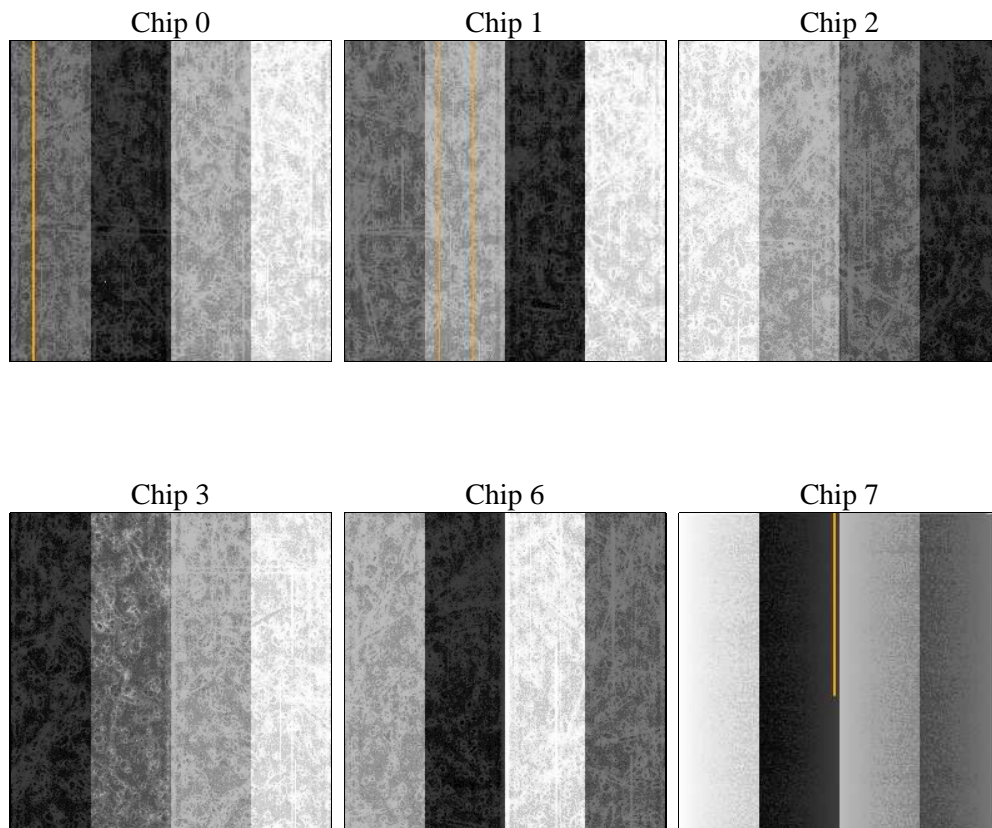
3 OBI Secondary

3.1 OBI

3.1.1 Images



3.1.2 Bias



3.1.3 Parameters

obi_num	0	Obi number	sched_exp_time	5000.000000	[s] Scheduled observation exposure time
ascdsver	8.4.5	Processing system revision	ontime	4189.0757903457	Sum of GTIs [s]
caldsver	4.4.10	 	ontime0	4189.0758503675	Sum of GTIs [s]
date	2012-06-19T07:01:11	Date and time of file creation	ontime1	4189.0754119754	Sum of GTIs [s]
revision	2	Processing version of data	ontime2	4189.0756601095	Sum of GTIs [s]
			ontime3	4189.0757903457	Sum of GTIs [s]
			ontime6	4189.0756011009	Sum of GTIs [s]
			ontime7	4189.0759597421	Sum of GTIs [s]
			l1events	261891	Number of level 1 events

3.1.4 Events

	ccd 0	ccd 1	ccd 2	ccd 3	ccd 6	ccd 7		ccd 0	ccd 1	ccd 2	ccd 3	ccd 6	ccd 7
level 1 events	40414	41617	48388	42116	42135	47221	grade 0 events	3188	4702	4608	4322	1646	2008
rejected events	34562	33596	40500	35267	38010	27650		7%	11%	9%	10%	3%	4%
rejected %	85%	80%	83%	83%	90%	58%	grade 1 events	48	140	332	68	22	60
								0%	0%	0%	0%	0%	0%
							grade 2 events	1251	1564	1589	1174	1034	4481
								3%	3%	3%	2%	2%	9%
							grade 3 events	506	634	635	522	445	1982
								1%	1%	1%	1%	1%	4%
							grade 4 events	518	642	639	495	462	1971
								1%	1%	1%	1%	1%	4%
							grade 5 events	1552	1665	1804	1725	1772	4959
								3%	4%	3%	4%	4%	10%
							grade 6 events	925	1058	1034	814	1022	11312
								2%	2%	2%	1%	2%	23%
							grade 7 events	32426	31212	37747	32996	35732	20448
								80%	74%	78%	78%	84%	43%

A Summary

A.1 Status

V&V Scientist	Jen Lauer
V&V Date (YYYY-MM-DD)	2012.06.25
V&V Edition	1
V&V Disposition and Status	OK
V&V Charge Time	5.17204245072606

A.2 Comments

Joint proposal: HST