

V&V Reference Report

L2 ASCDS Version : 8.2.1

Observation 1117 - L2 Version 3
Chandra X-Ray Center

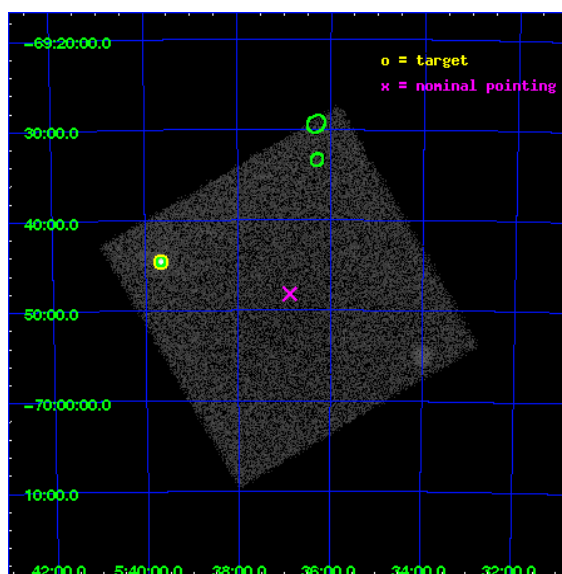
L2 Processing Date : Jan 12 2010

Contents

| | | |
|----------|-------------------------------|-----------|
| 1 | Front | 2 |
| 2 | OBI | 3 |
| 2.1 | OBI | 3 |
| 2.1.1 | Images | 3 |
| 2.1.2 | Parameters | 4 |
| 2.1.3 | Events | 4 |
| 2.2 | Compared Parameters | 5 |
| 2.3 | Aspect | 6 |
| 2.4 | Star Slots | 9 |
| 2.4.1 | Slot 3 | 9 |
| 2.4.2 | Slot 4 | 10 |
| 2.4.3 | Slot 5 | 11 |
| 2.4.4 | Slot 6 | 12 |
| 2.4.5 | Slot 7 | 13 |
| 2.5 | FID Slots | 14 |
| 2.5.1 | Slot 0 | 14 |
| 2.5.2 | Slot 1 | 15 |
| 2.5.3 | Slot 2 | 16 |
| 3 | Point Sources | 17 |
| A | Summary | 18 |
| A.1 | Status | 18 |
| A.2 | Comments | 18 |

1 Front

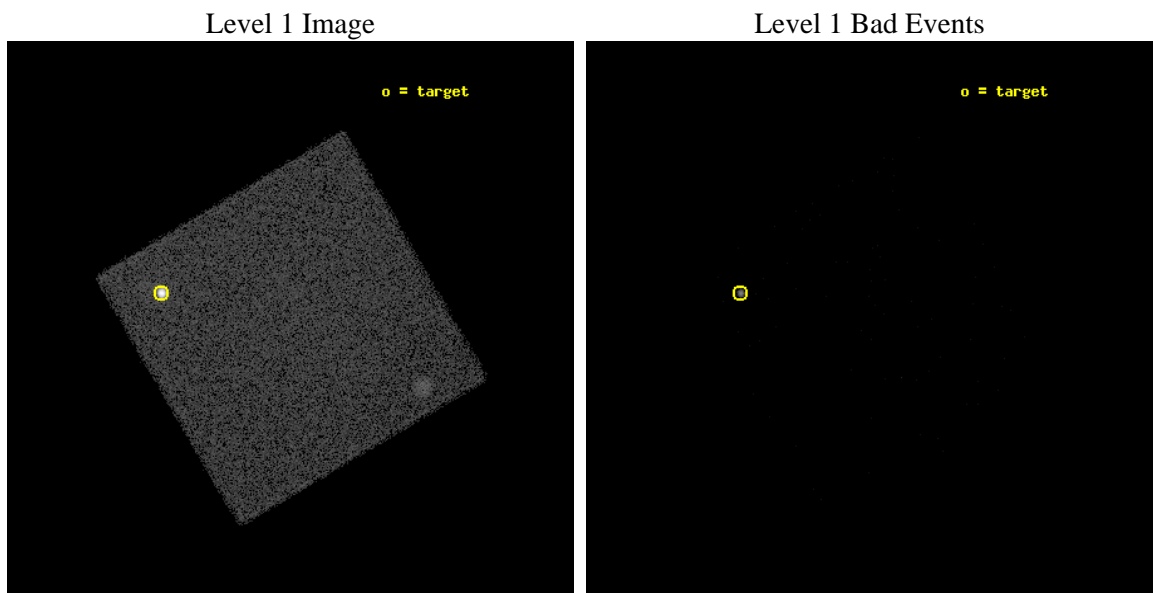
| | | |
|----------|---------------------|---------------------------------|
| seq_num | 480067 | Sequence number |
| obs_id | 1117 | Observation id |
| title | | Proposal title |
| observer | Dr. CXC Calibration | Principal investigator |
| object | LMC X-1 | Source name |
| ra_targ | 84.914583 | Observer's specified target RA |
| dec_targ | -69.743611 | Observer's specified target Dec |
| ra_nom | 84.218786631035 | Nominal RA |
| dec_nom | -69.803170368022 | Nominal Dec |
| roll_nom | 104.60040125955 | Nominal Roll |
| revision | 3 | Processing version of data |
| ontime | 1795.0313144699 | [s] |
| livetime | 1779.8823965402 | Ontime multiplied by DTCOR |
| l2events | 79785 | Number of level 2 events |



2 OBI

2.1 OBI

2.1.1 Images



2.1.2 Parameters

| | | | | | |
|----------|---------------------|--------------------------------|----------------|-----------------|-------------------------------------|
| obi_num | 0 | Obi number | sched_exp_time | 2000.000000 | Scheduled observation exposure time |
| ascdsver | 8.2.1 | Processing system revision | ontime | 1795.0313144699 | [s] |
| caldbver | 4.1.5 | | l1events | 124609 | Number of level 1 events |
| date | 2010-01-12T21:00:45 | Date and time of file creation | | | |
| revision | 3 | Processing version of data | | | |

2.1.3 Events

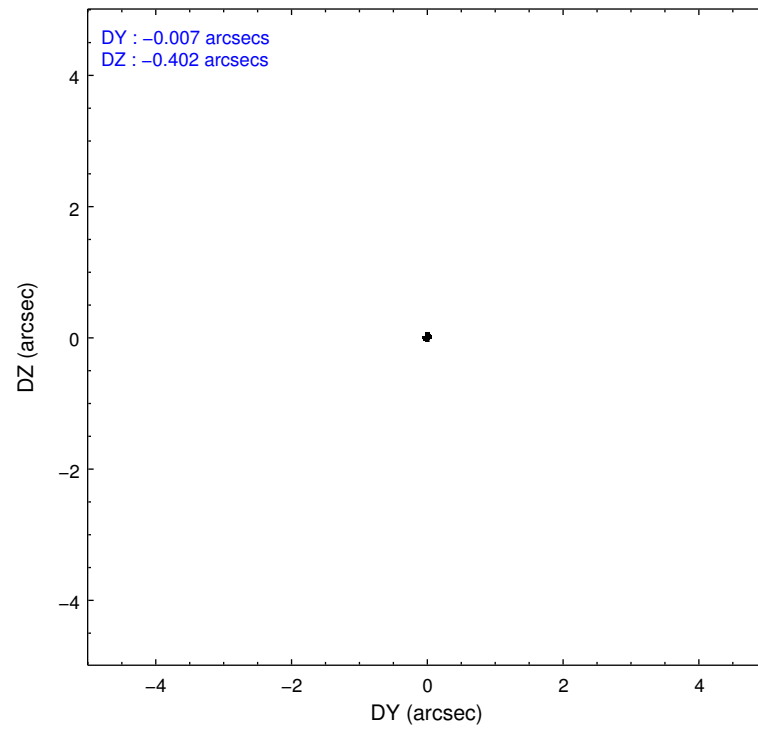
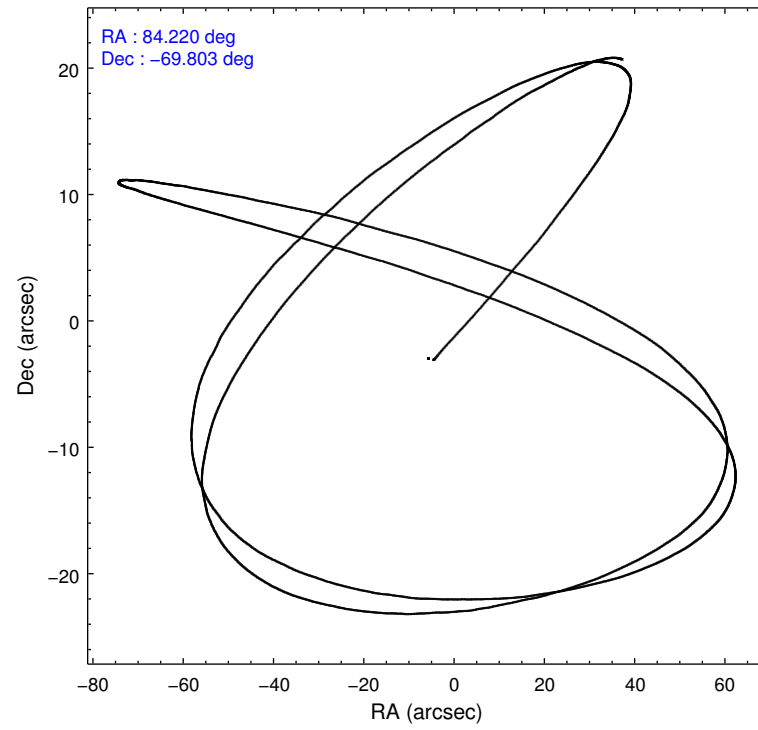
Level 1 Events

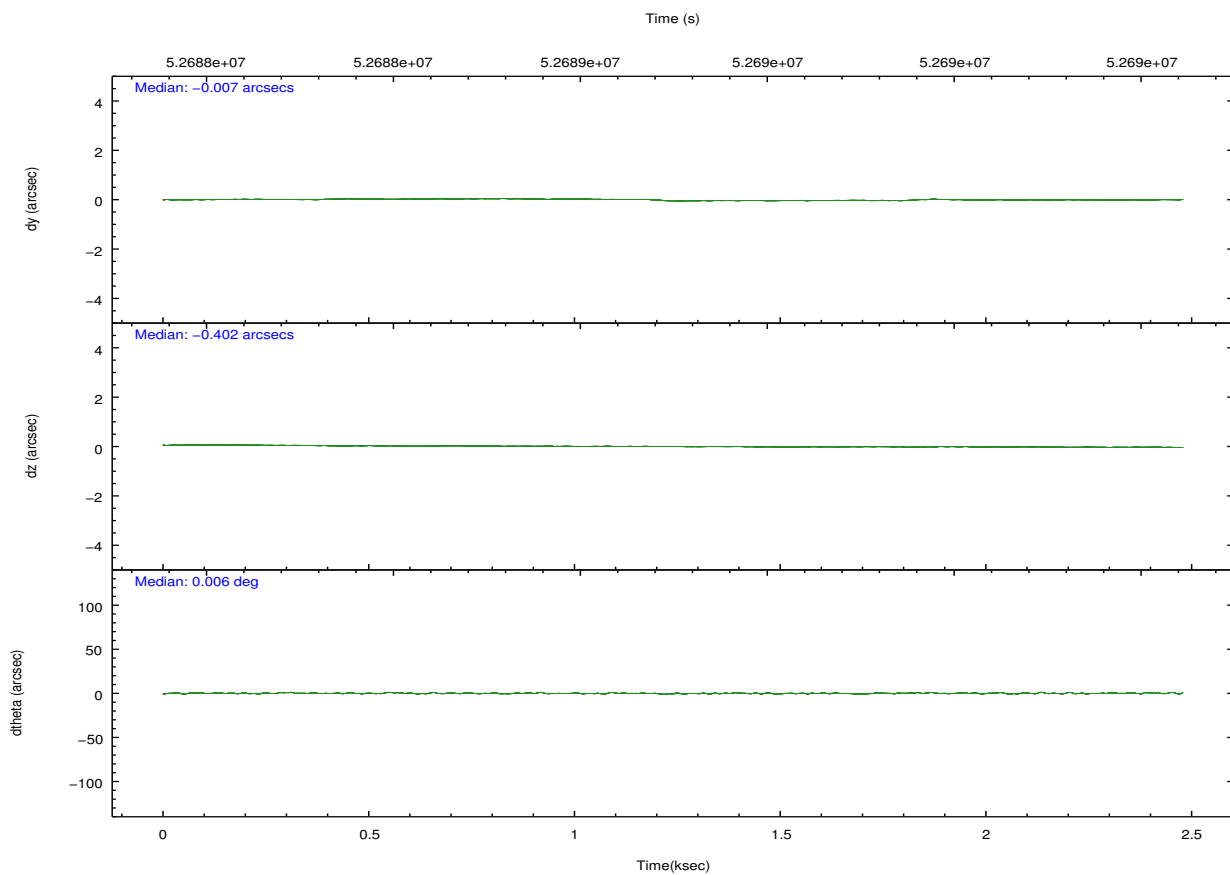
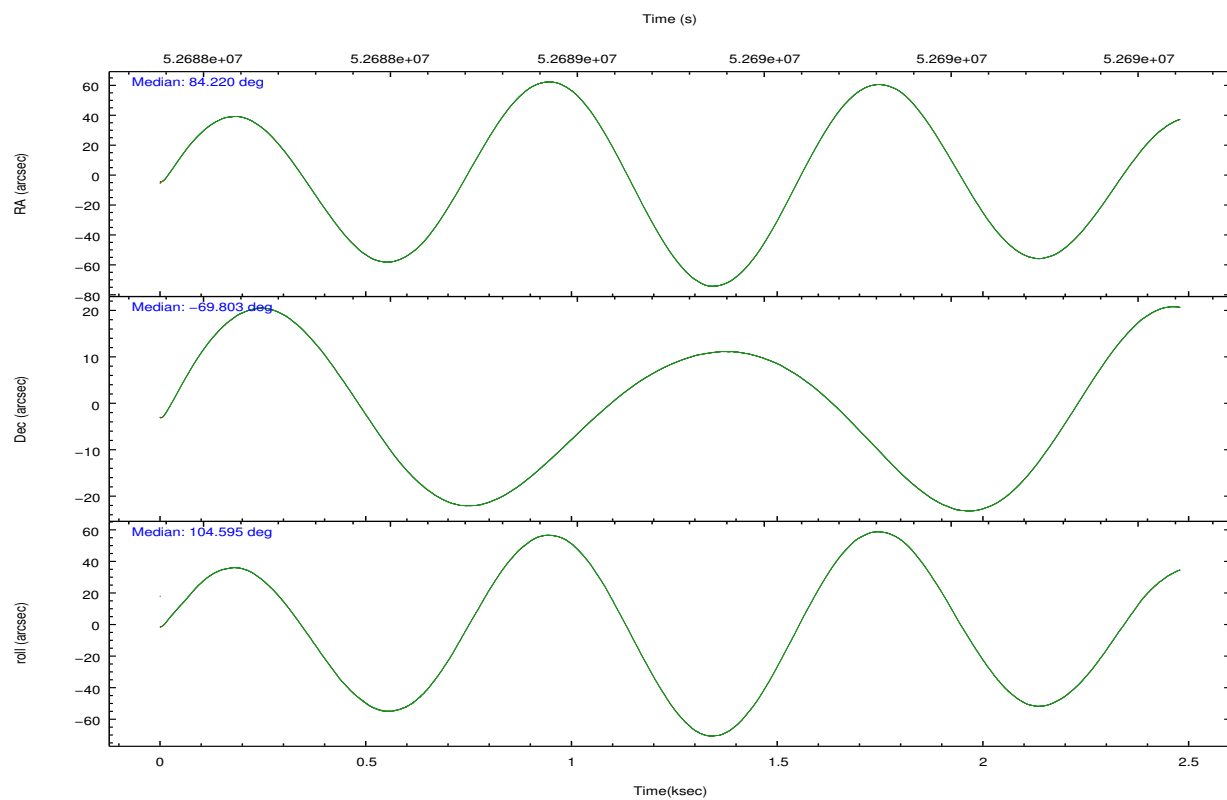
| | |
|-----------------|----------------------|
| | segment 0 |
| level 1 events | 124609 |
| rejected events | 3384 |
| rejected % | 2% |

2.2 Compared Parameters

| Parameter | Planned | Actual | Parameter | Planned | Actual |
|-----------------------------------|---------------------|------------------------|------------------------------|-----------|---------|
| Instrument | HRC | HRC | Obspar format version number | 6 | 6 |
| Detector | HRC-I | HRC-I | Obspar file type | PREDICTED | ACTUAL |
| Grating | NONE | NONE | Obspar update status | NONE | UPDATED |
| Data mode | OBSERVING | OBSERVING | | | |
| Observation mode | POINTING | POINTING | | | |
| Pointing RA | 84.274246 | 84.21878663103467 | | | |
| Pointing Dec | -69.823124 | -69.8031703680219 | | | |
| Pointing Roll | 104.747943 | 104.6004012595475 | | | |
| SIM focus pos (mm) | -1.040293 | -1.300001029371461 | | | |
| SIM defocus (mm) | 0 | -0.259708408712586 | | | |
| SIM translation stage pos (mm) | 126.985494 | 126.9854943052878 | | | |
| SIM translation stage offset (mm) | 0 | -5.413686238853188e-06 | | | |
| Observation start time | 52688488.184000 | 52687821.442953 | | | |
| Observation start date | 1999-09-02T19:40:24 | 1999-09-02T19:30:21 | | | |
| Observation end time | 52690488.184000 | 52690621.743054 | | | |
| Observation end date | 1999-09-02T20:13:44 | 1999-09-02T20:17:01 | | | |

2.3 Aspect



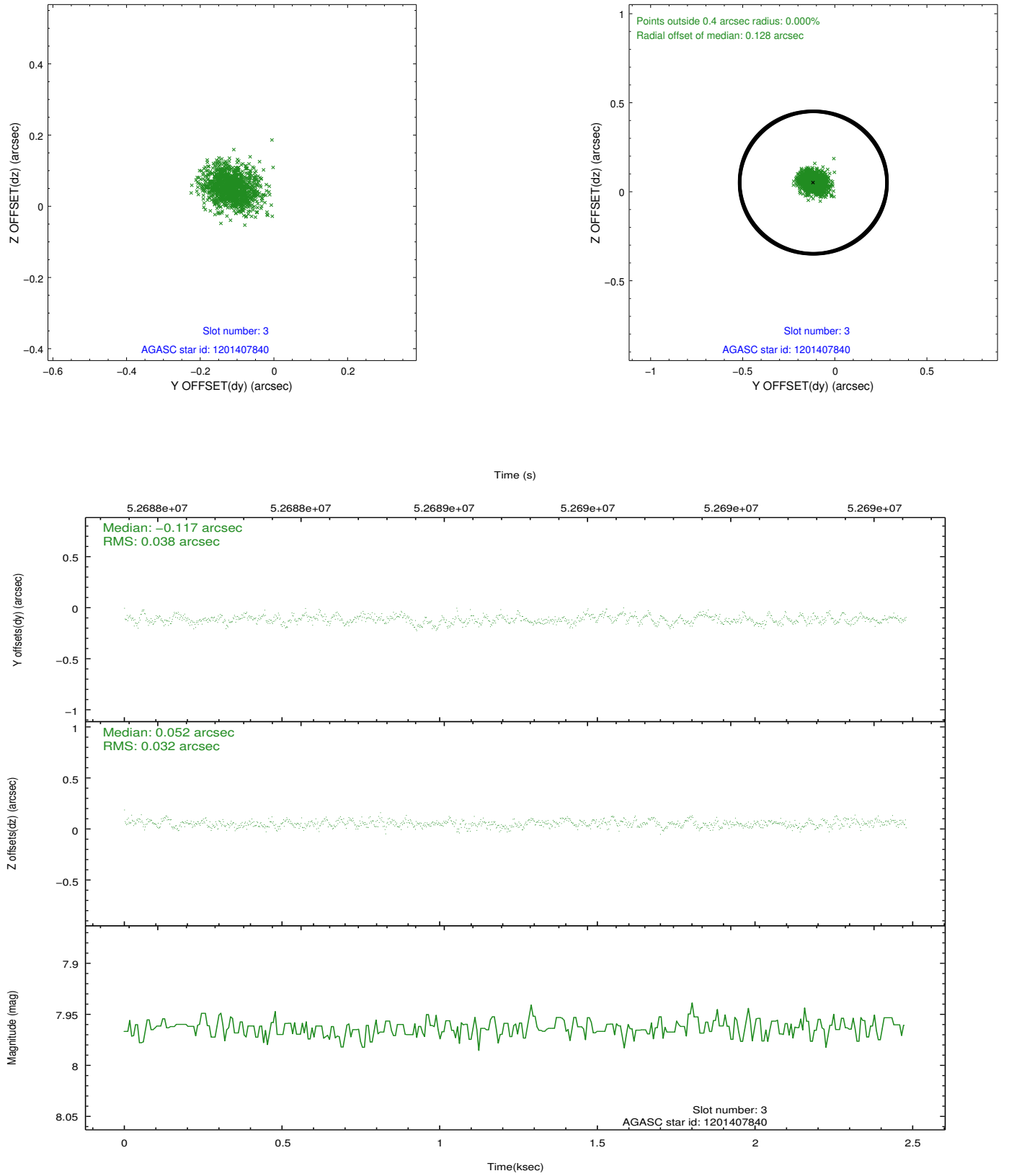


Slot Statistics

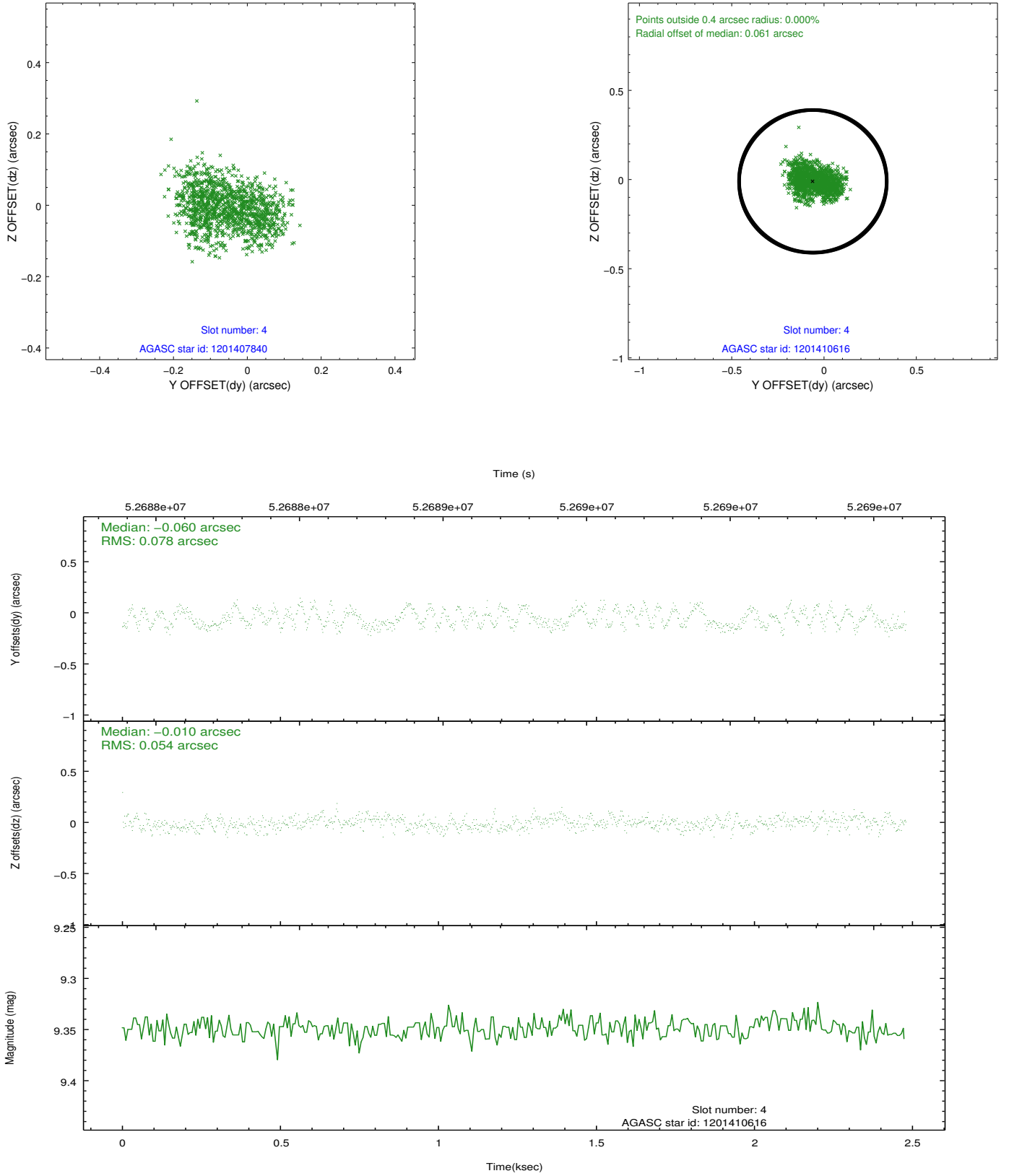
| slot | status | id | mag | n_pts | med_dy | med_dz | dr1 | dr2 | ra | dec | mean_y | mean_z |
|------|--------|------------|------|-------|--------|--------|-------|-------|-----------|------------|----------|----------|
| 0 | FID | HRC-I-1 | 6.96 | 1210 | -0.009 | -0.066 | 0.006 | 0.010 | 0.000000 | 0.000000 | -755.31 | -1287.36 |
| 1 | FID | HRC-I-3 | 7.04 | 1210 | 0.060 | -0.042 | 0.006 | 0.011 | 0.000000 | 0.000000 | -1184.46 | 1016.08 |
| 2 | FID | HRC-I-4 | 6.98 | 1210 | 0.063 | 0.019 | 0.005 | 0.009 | 0.000000 | 0.000000 | 1286.41 | 1015.78 |
| 3 | GUIDE | 1201407840 | 7.96 | 1210 | -0.117 | 0.052 | 0.053 | 0.087 | 83.696303 | -70.172201 | -1040.35 | 1004.31 |
| 4 | GUIDE | 1201410616 | 9.35 | 1210 | -0.060 | -0.010 | 0.105 | 0.155 | 82.516808 | -69.784406 | 658.43 | 2088.51 |
| 5 | GUIDE | 1201406992 | 9.27 | 1208 | 0.188 | -0.036 | 0.076 | 0.124 | 83.682859 | -69.471866 | 1408.87 | 404.01 |
| 6 | GUIDE | 1201540776 | 9.60 | 1208 | 0.015 | 0.010 | 0.080 | 0.134 | 85.107945 | -69.858480 | -392.96 | -963.75 |
| 7 | GUIDE | 1201540568 | 9.98 | 1209 | -0.042 | -0.013 | 0.103 | 0.163 | 85.901764 | -70.070643 | -1397.25 | -1697.36 |

2.4 Star Slots

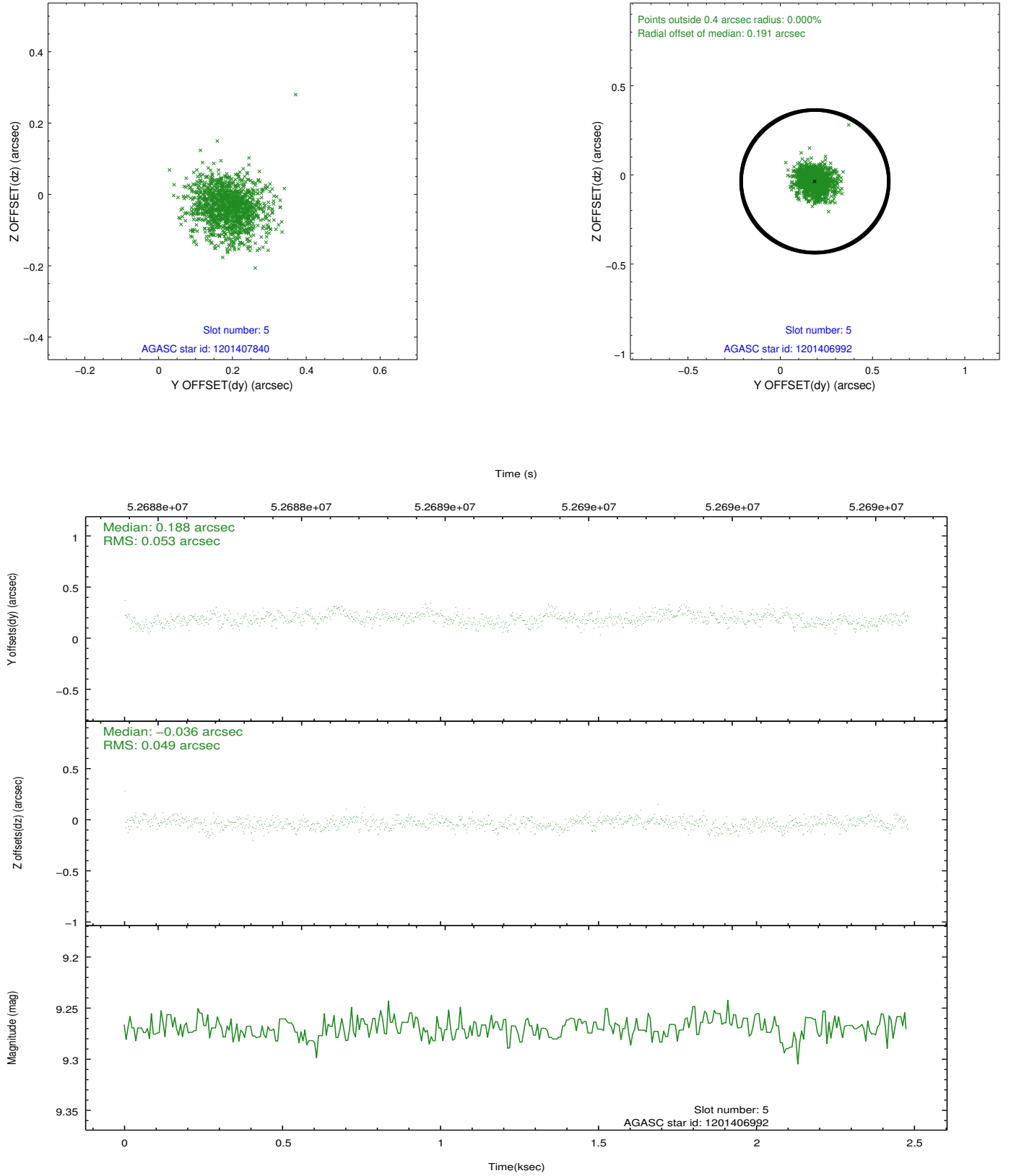
2.4.1 Slot 3



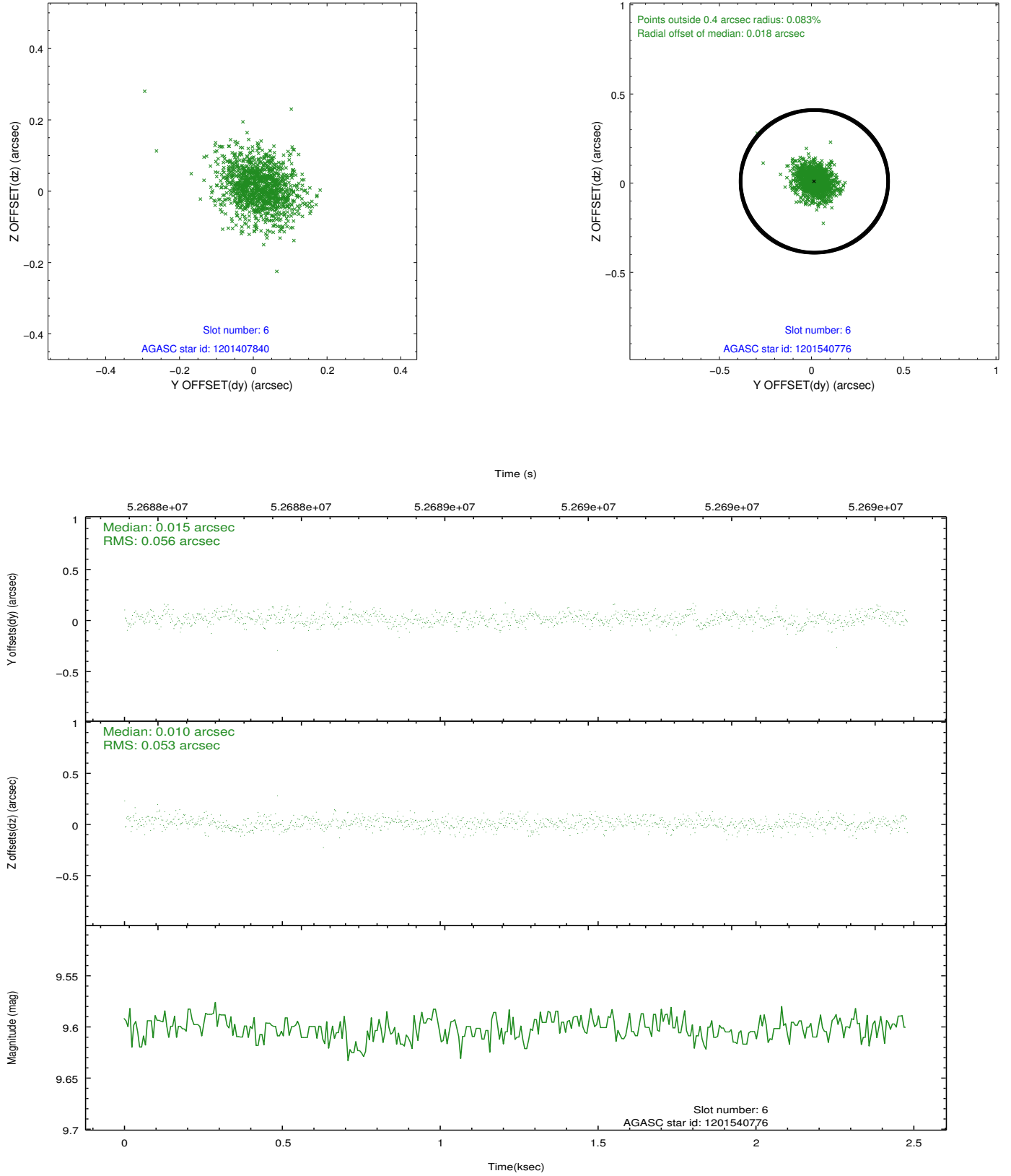
2.4.2 Slot 4



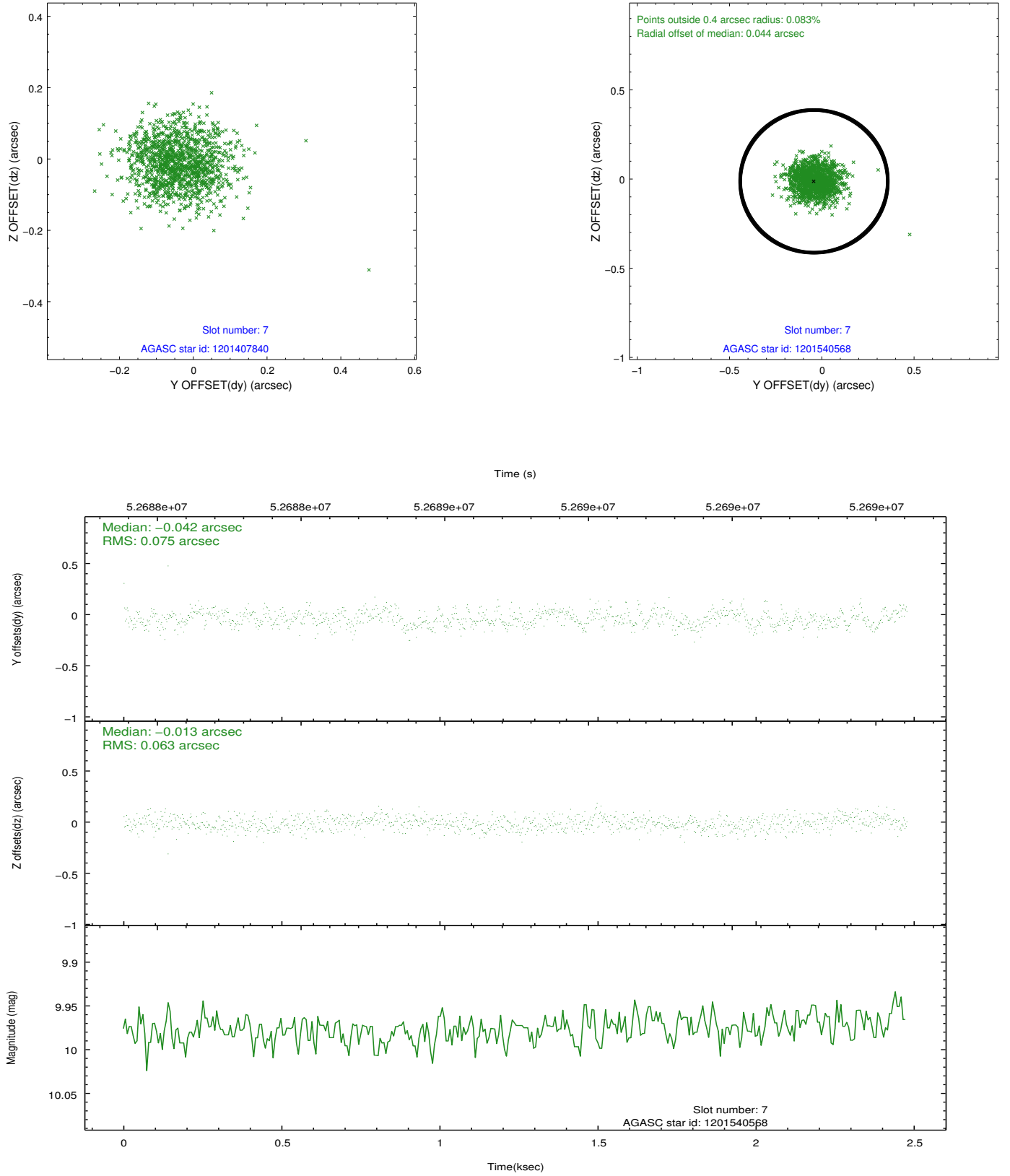
2.4.3 Slot 5



2.4.4 Slot 6

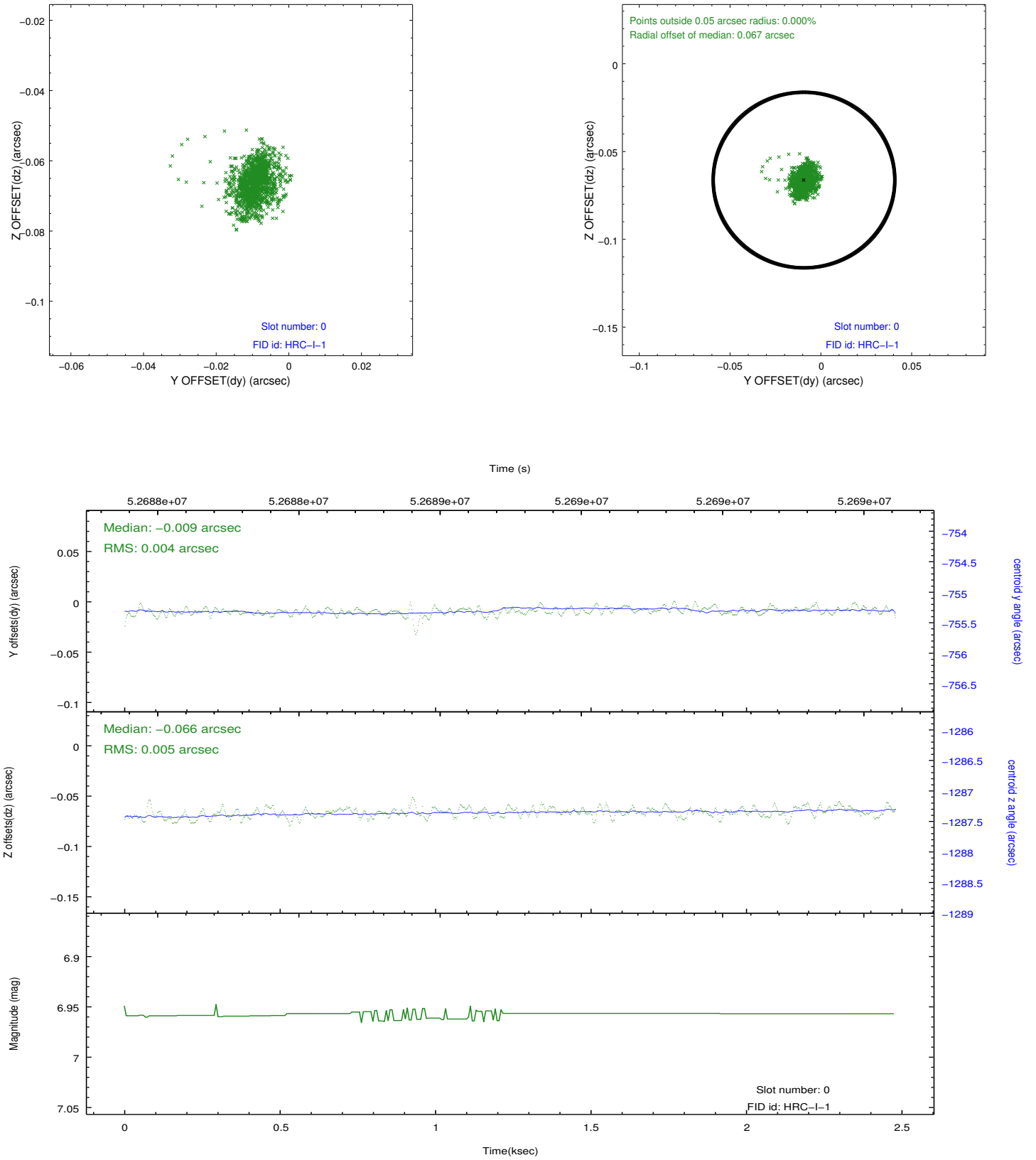


2.4.5 Slot 7

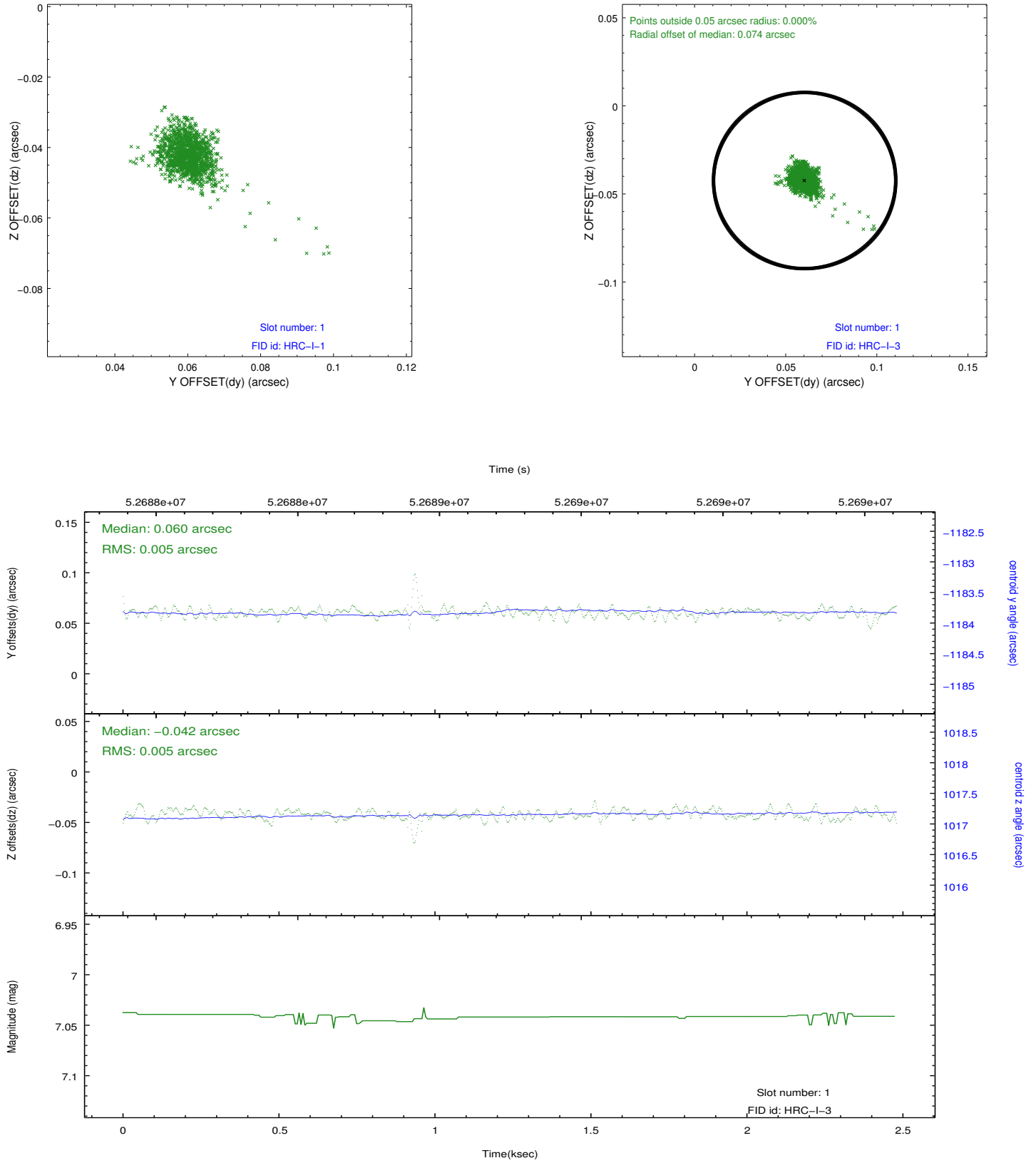


2.5 FID Slots

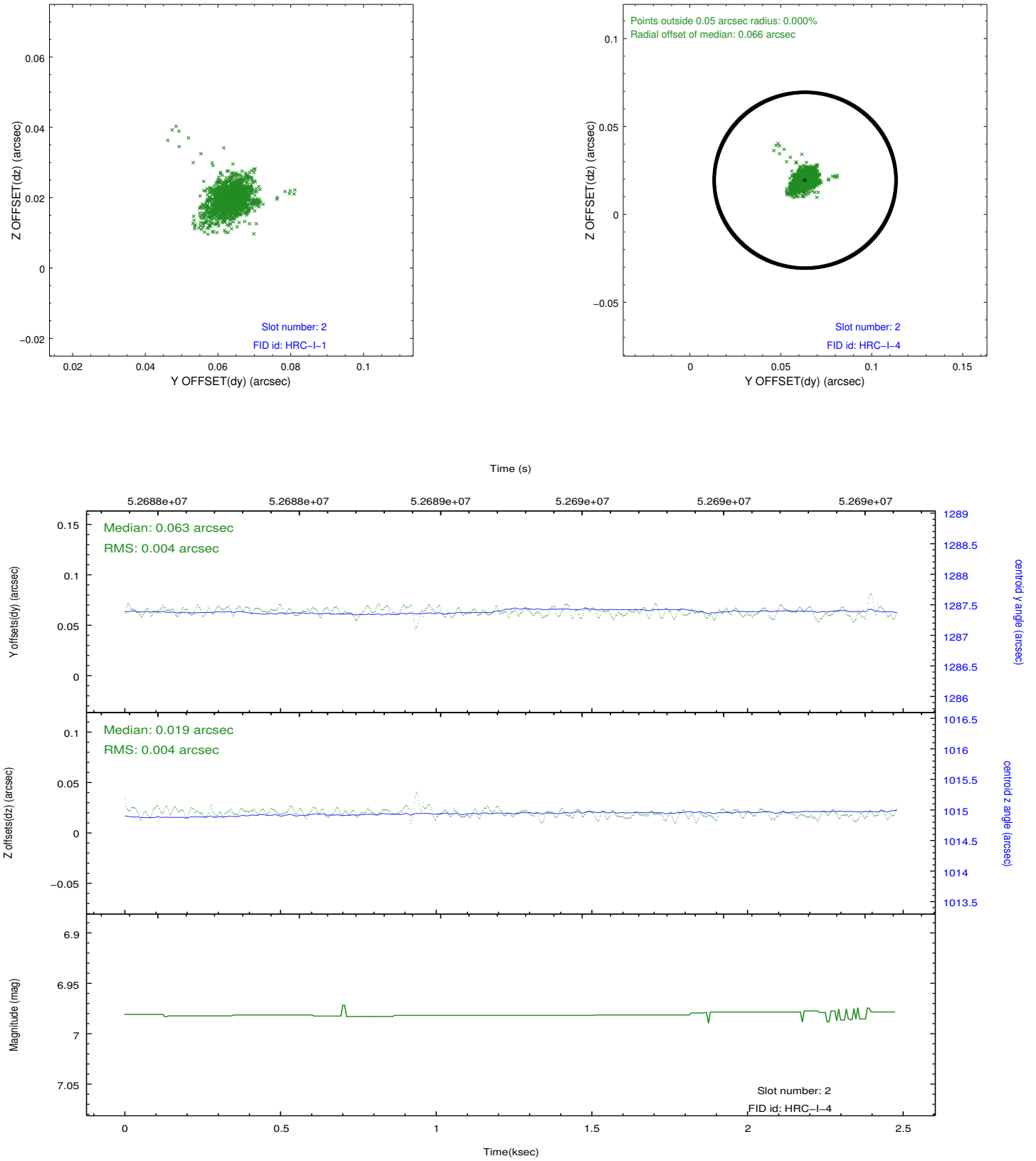
2.5.1 Slot 0



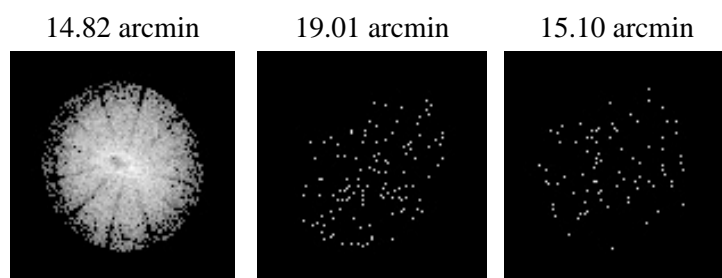
2.5.2 Slot 1



2.5.3 Slot 2



3 Point Sources



A Summary

A.1 Status

| | |
|----------------------------|-------------|
| V&V Scientist | Joy Nichols |
| V&V Date (YYYY-MM-DD) | 2010.01.22 |
| V&V Edition | 1 |
| V&V Disposition and Status | OK |
| V&V Charge Time | 1.792 |

A.2 Comments

HRC boresight alignment and focus series. Target off-axis.

===

Charge time for this observation remains at previous value of 1.792 ksec,
although with the current processing the charge time would have been 1.795 ksec.