

# V&V Reference Report

## L2 ASCDS Version : 8.4.4

Observation 10267 - L2 Version 2  
Chandra X-Ray Center

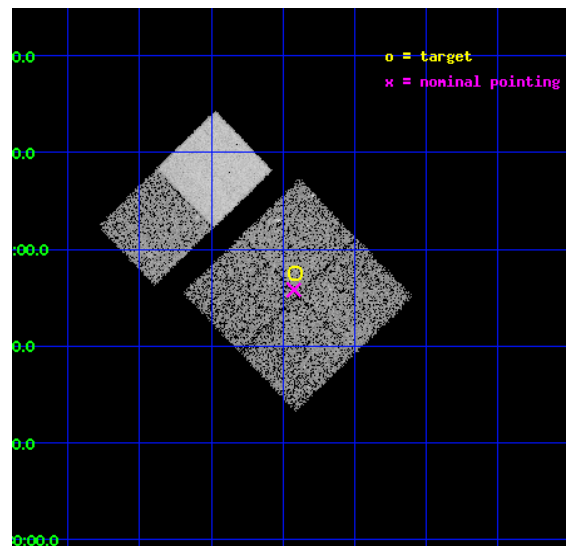
L2 Processing Date : May 25 2012

## Contents

<b>1</b>	<b>Front</b>	<b>2</b>
<b>2</b>	<b>OBI</b>	<b>3</b>
2.1	OBI . . . . .	3
2.1.1	Images . . . . .	3
2.1.2	Bias . . . . .	3
2.1.3	Parameters . . . . .	4
2.1.4	Events . . . . .	4
2.2	Compared Parameters . . . . .	5
2.3	Aspect . . . . .	6
2.4	Star Slots . . . . .	9
2.4.1	Slot 3 . . . . .	9
2.4.2	Slot 4 . . . . .	10
2.4.3	Slot 5 . . . . .	11
2.4.4	Slot 6 . . . . .	12
2.4.5	Slot 7 . . . . .	13
2.5	FID Slots . . . . .	14
2.5.1	Slot 0 . . . . .	14
2.5.2	Slot 1 . . . . .	15
2.5.3	Slot 2 . . . . .	16
<b>A</b>	<b>Summary</b>	<b>17</b>
A.1	Status . . . . .	17
A.2	Comments . . . . .	17

# 1 Front

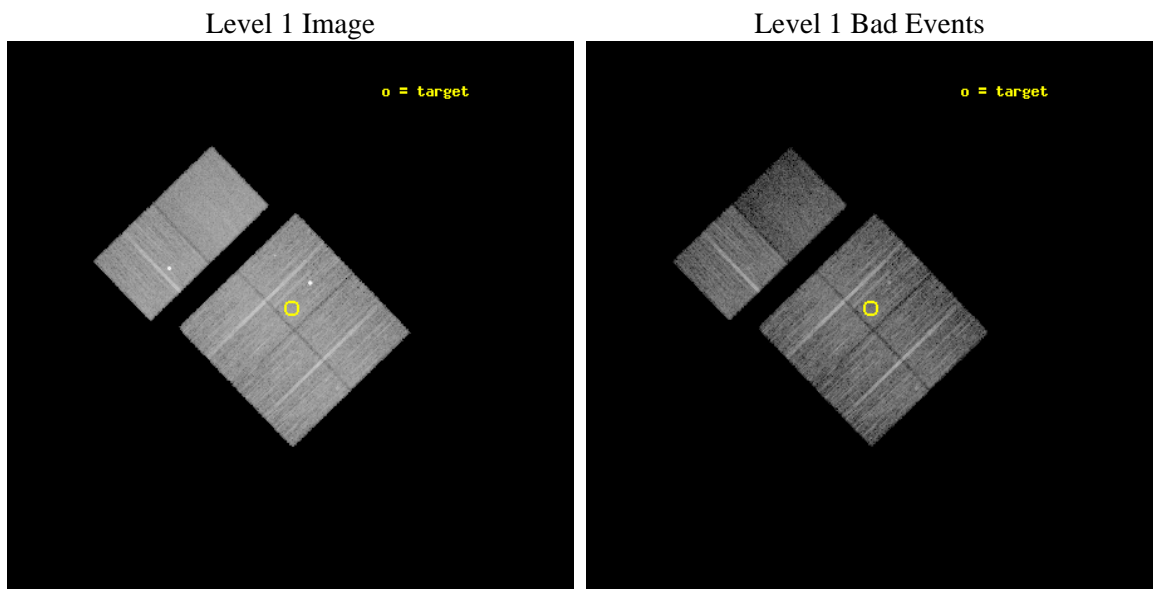
seq_num	701810	Sequence number
obs_id	10267	Observation id
title	Using Chandra and HST to Construct the First Detailed Timeline of Early-Type Galaxy Evolution	Proposal title
observer	Prof. Ann Zabludoff	Principal investigator
object	SDSSJ031654.91-000231.1	Source name
dtcycle	0	&#160
cycle	P	events from which exps? Prim/Second/Both
ra_targ	49.22875	Observer's specified target RA [deg]
dec_targ	-0.041972	Observer's specified target Dec [deg]
ra_nom	49.231005621783	Nominal RA [deg]
dec_nom	-0.069764801406945	Nominal Dec [deg]
roll_nom	316.00471688232	Nominal Roll [deg]
revision	2	Processing version of data
ontime	11039.180029035	Sum of GTIs [s]
livetime	10899.395284511	Livetime [s]
ontime0	11039.056909025	Sum of GTIs [s]
ontime1	11039.097949028	Sum of GTIs [s]
ontime2	11039.138989031	Sum of GTIs [s]
ontime3	11039.180029035	Sum of GTIs [s]
ontime6	11039.262109041	Sum of GTIs [s]
ontime7	11039.221069038	Sum of GTIs [s]
l2events	73418	Number of level 2 events



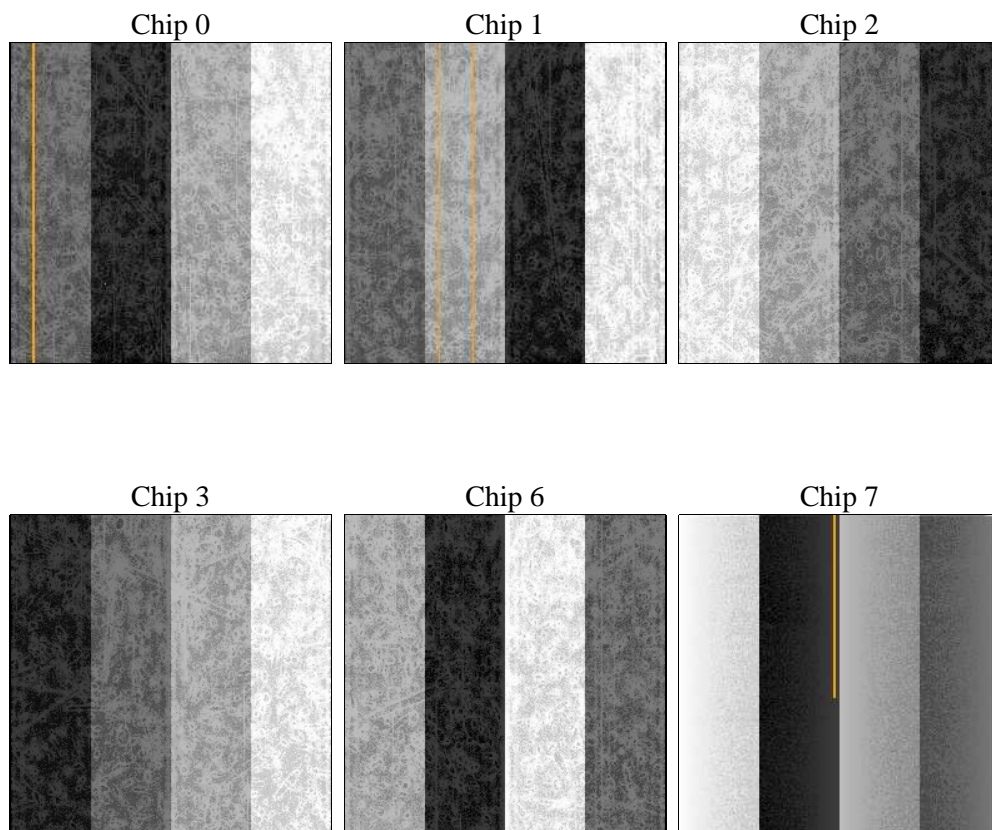
## 2 OBI

### 2.1 OBI

#### 2.1.1 Images



#### 2.1.2 Bias



### 2.1.3 Parameters

obi_num	0	Obi number	sched_exp_time	11000.000000	[s] Scheduled observation exposure time
ascdsver	8.4.4	Processing system revision	ontime	11039.180029035	Sum of GTIs [s]
caldsver	4.4.9	&#160	ontime0	11039.056909025	Sum of GTIs [s]
date	2012-05-25T18:14:06	Date and time of file creation	ontime1	11039.097949028	Sum of GTIs [s]
revision	2	Processing version of data	ontime2	11039.138989031	Sum of GTIs [s]
			ontime3	11039.180029035	Sum of GTIs [s]
			ontime6	11039.262109041	Sum of GTIs [s]
			ontime7	11039.221069038	Sum of GTIs [s]
			l1events	507841	Number of level 1 events

### 2.1.4 Events

	ccd 0	ccd 1	ccd 2	ccd 3	ccd 6	ccd 7		ccd 0	ccd 1	ccd 2	ccd 3	ccd 6	ccd 7
level 1 events	82413	75947	90398	86321	90419	82343	grade 0 events	3000	3066	3023	3094	3175	4182
rejected events	74115	67320	82395	74728	78391	42065		3%	4%	3%	3%	3%	5%
rejected %	89%	88%	91%	86%	86%	51%	grade 1 events	55	38	50	45	47	128
								0%	0%	0%	0%	0%	0%
							grade 2 events	2007	1873	1830	5121	5113	8719
								2%	2%	2%	5%	5%	10%
							grade 3 events	923	980	887	879	913	3630
								1%	1%	0%	1%	1%	4%
							grade 4 events	874	941	829	893	977	3622
								1%	1%	0%	1%	1%	4%
							grade 5 events	2532	2747	2441	2976	3145	8707
								3%	3%	2%	3%	3%	10%
							grade 6 events	1498	1770	1439	1613	1859	20147
								1%	2%	1%	1%	2%	24%
							grade 7 events	71524	64532	79899	71700	75190	33208
								86%	84%	88%	83%	83%	40%

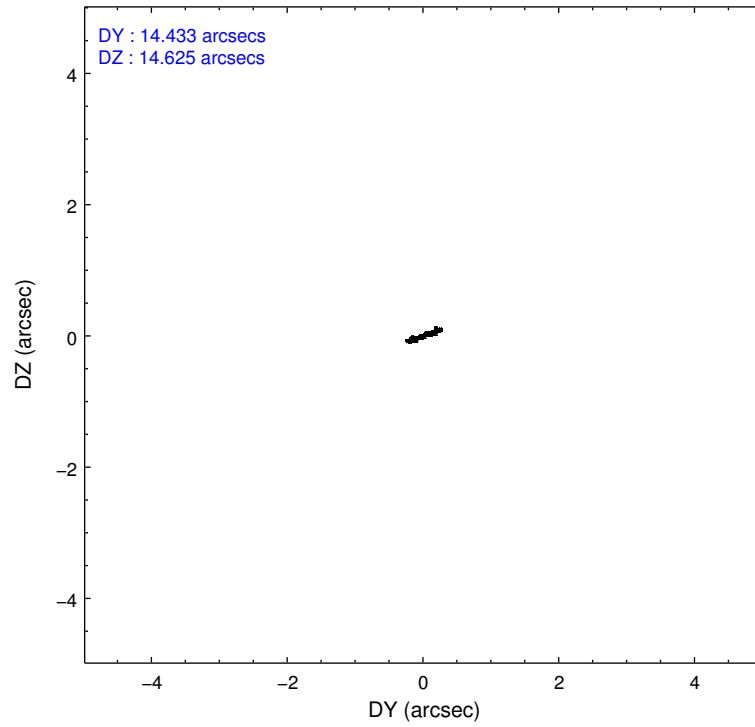
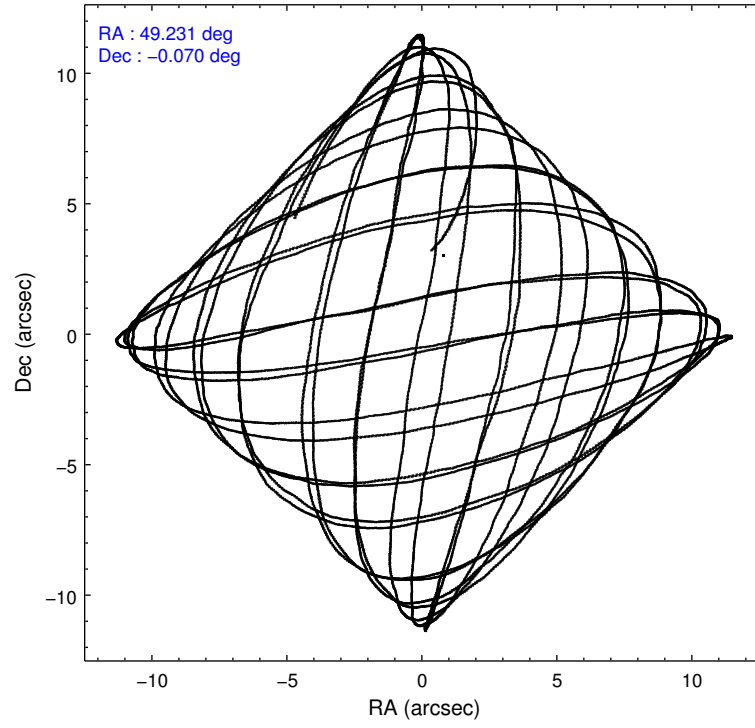


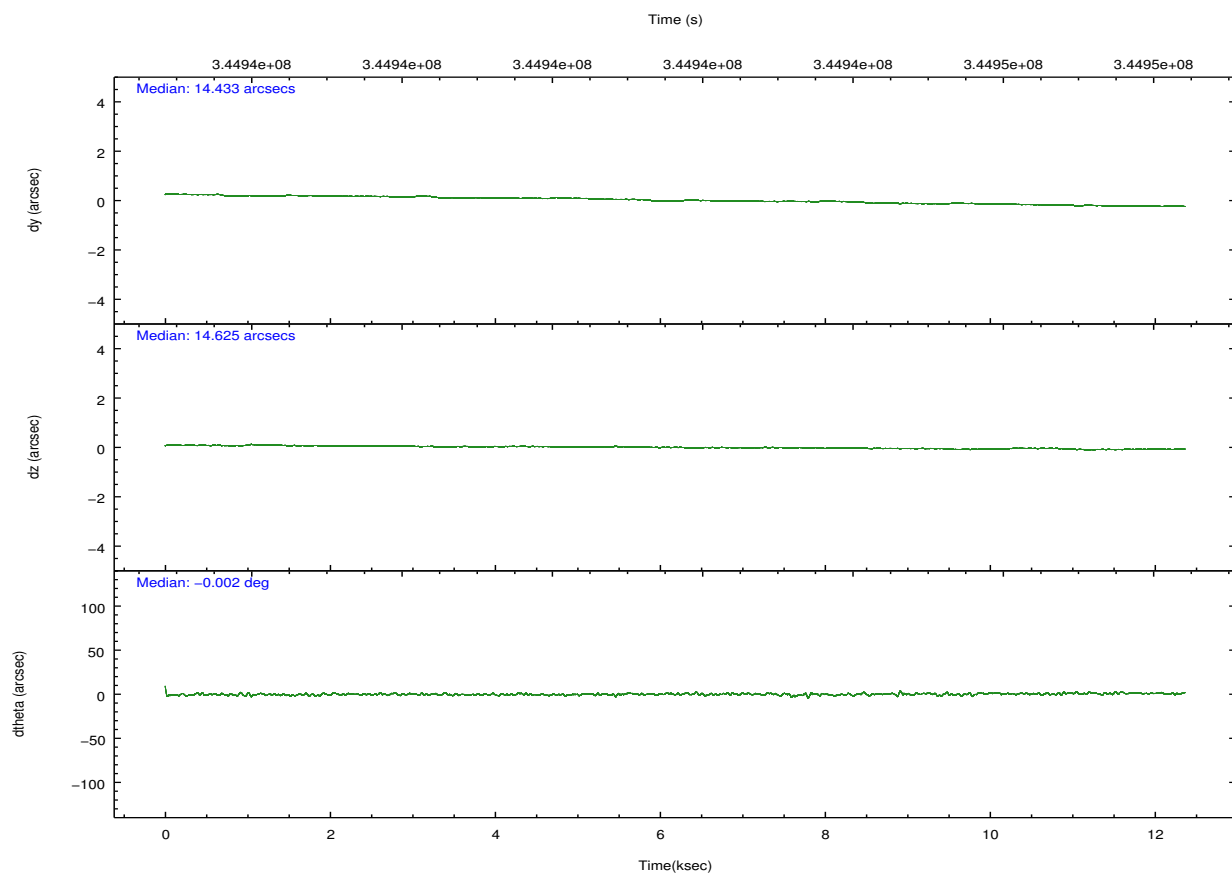
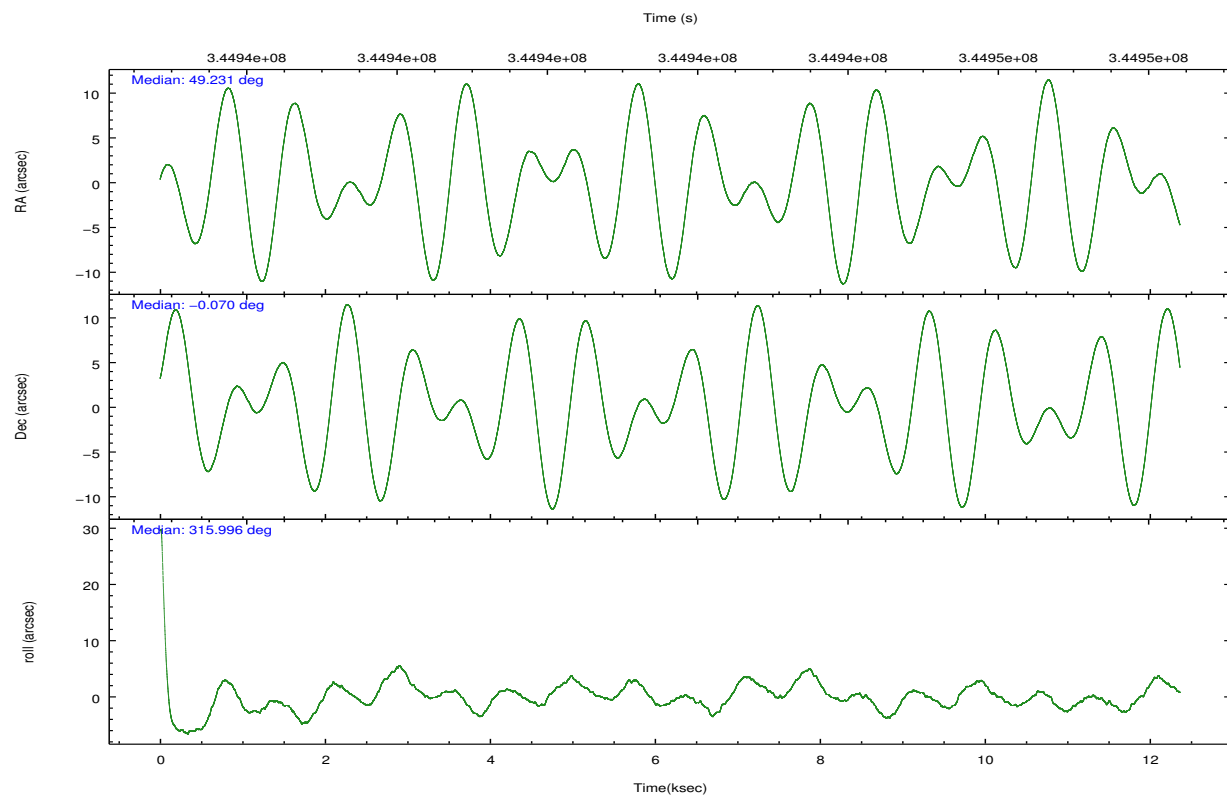
## 2.2 Compared Parameters

Parameter	Planned	Actual
Instrument	ACIS	ACIS
Detector	ACIS-012367	ACIS-012367
Grating	NONE	NONE
Data mode	FAINT	FAINT
Observation mode	POINTING	POINTING
[deg] Pointing RA	49.204293	49.23100562178292
[deg] Pointing Dec	-0.063296	-0.06976480140694503
[deg] Pointing Roll	315.795961	316.0047168823163
[mm] SIM focus pos	-0.782348	-0.7809083437167272
[mm] SIM defocus	0	0.001439871863259334
[mm] SIM translation stage pos	-233.592463	-233.5874344608287
[mm] SIM translation stage offset	0	-0.005018542100998502
[s] Observation start time (MET)	344936816.184000	344935073.4129
Observation start date	2008-12-06T07:45:51	2008-12-06T07:17:53
[s] Observation end time (MET)	344947816.184000	344948671.06357
Observation end date	2008-12-06T10:49:11	2008-12-06T11:04:31
Read mode	TIMED	TIMED

Parameter	Planned	Actual
Obspar format version number	7	7
Obspar file type	PREDICTED	ACTUAL
Obspar update status	NONE	UPDATED
CCD I0 on	Y	Y
CCD I1 on	Y	Y
CCD I2 on	Y	Y
CCD I3 on	Y	Y
CCD S0 on	N	N
CCD S1 on	N	N
CCD S2 on	O1	Y
CCD S3 on	O2	Y
CCD S4 on	N	N
CCD S5 on	N	N
Number of optional ACIS chips dropped	0	0
On-chip summing requested	N	N
Subarray requested	NONE	NONE
Alternating exposures requested	N	N
[s] Primary exposure time	0.000000	3.2

## 2.3 Aspect



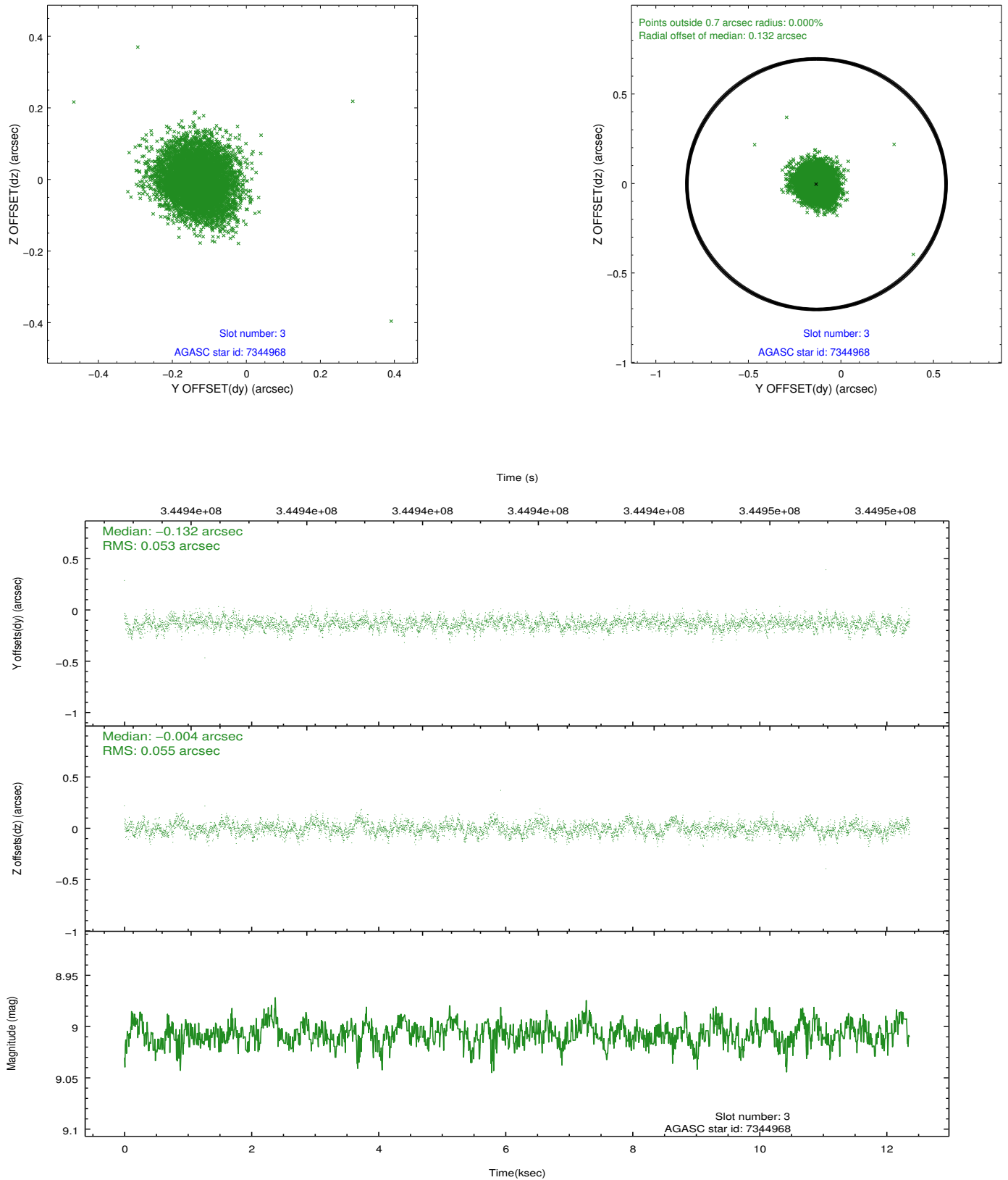


### Slot Statistics

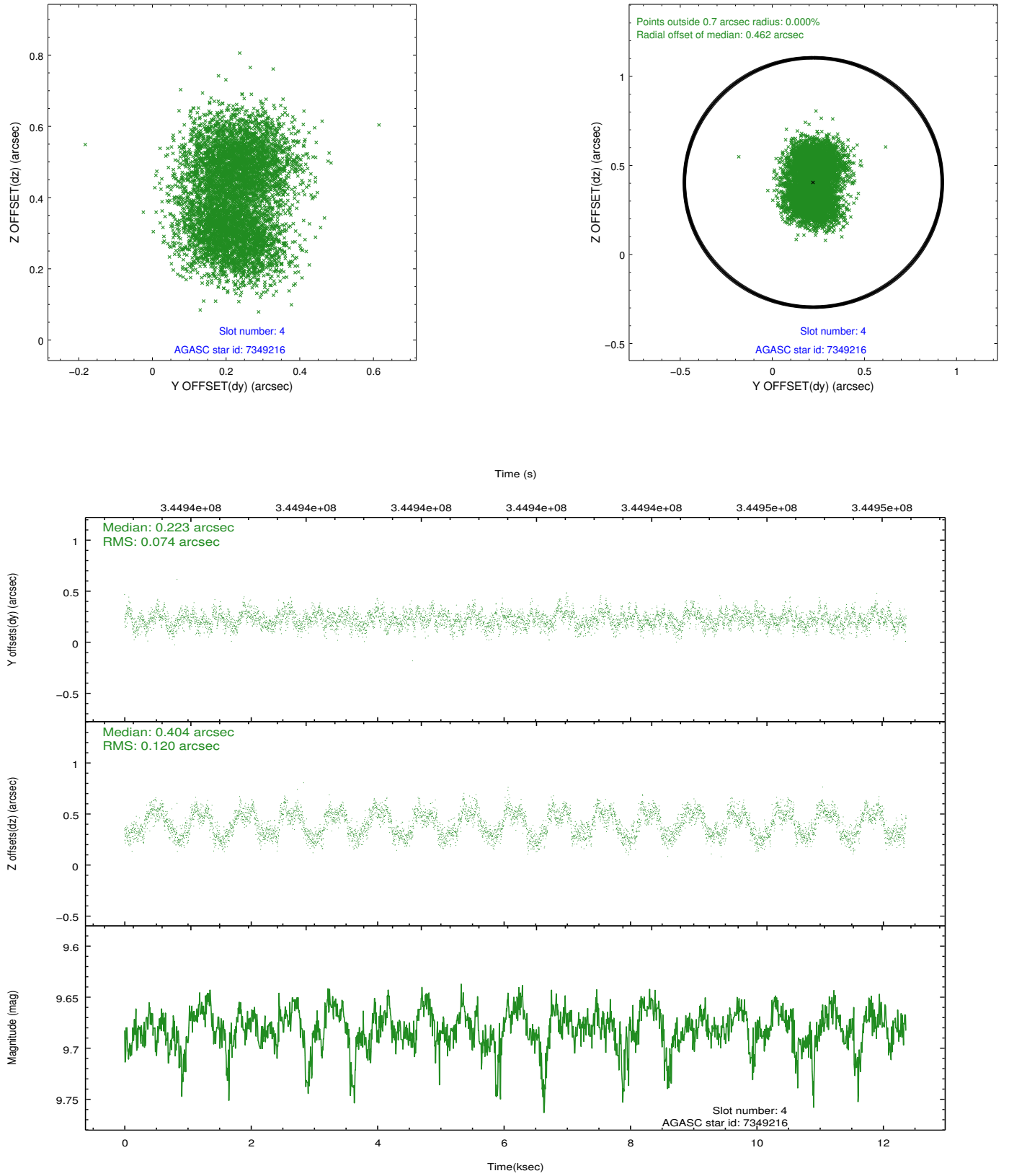
slot	status	id	mag	n_pts	med_dy	med_dz	dr1	dr2	ra	dec	mean_y	mean_z
0	FID	ACIS-I-1	7.14	3015	-0.033	0.062	0.009	0.015	0.000000	0.000000	924.99	-838.16
1	FID	ACIS-I-2	7.04	3016	-0.151	-0.074	0.008	0.013	0.000000	0.000000	-768.99	-844.92
2	FID	ACIS-I-4	7.04	3014	0.085	0.079	0.008	0.014	0.000000	0.000000	2144.82	1061.46
3	GUIDE	7344968	9.01	6032	-0.132	-0.004	0.080	0.128	49.053804	0.462089	-1706.42	978.06
4	GUIDE	7349216	9.68	6028	0.223	0.404	0.153	0.228	49.844735	0.042393	1387.81	1881.13
5	GUIDE	617091824	8.74	6025	-0.034	-0.218	0.086	0.137	49.347062	-0.159813	611.36	109.53
6	GUIDE	617092512	8.42	6029	-0.013	-0.157	0.078	0.128	48.882589	-0.479288	214.89	-1881.02
7	GUIDE	617092896	9.57	6024	-0.044	-0.006	0.173	0.278	48.615239	-0.326332	-858.77	-2157.35

## 2.4 Star Slots

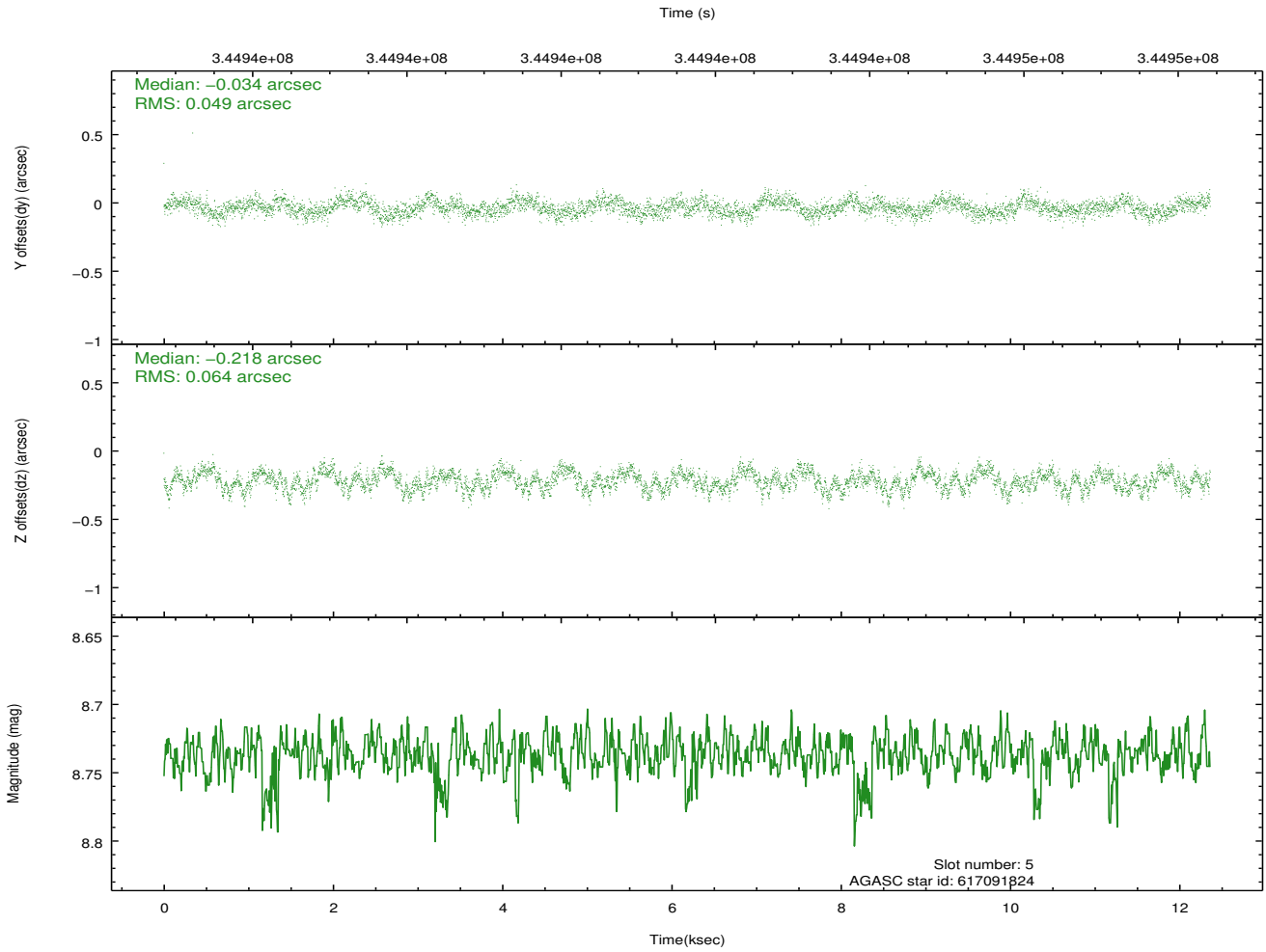
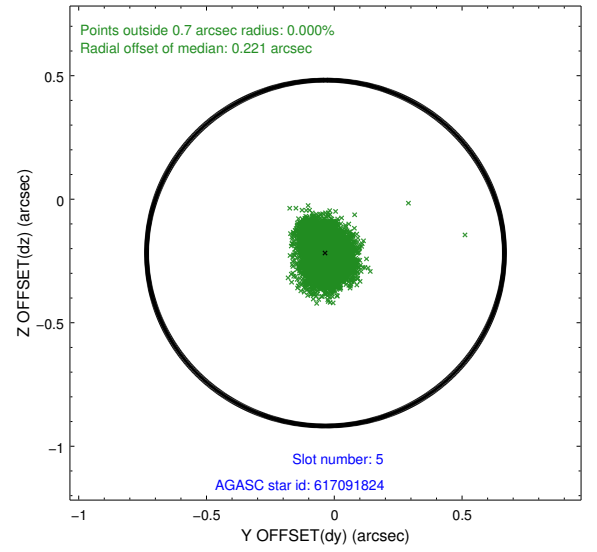
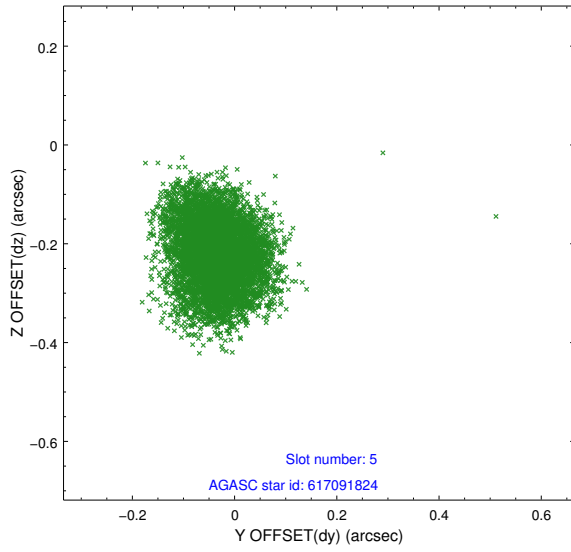
### 2.4.1 Slot 3



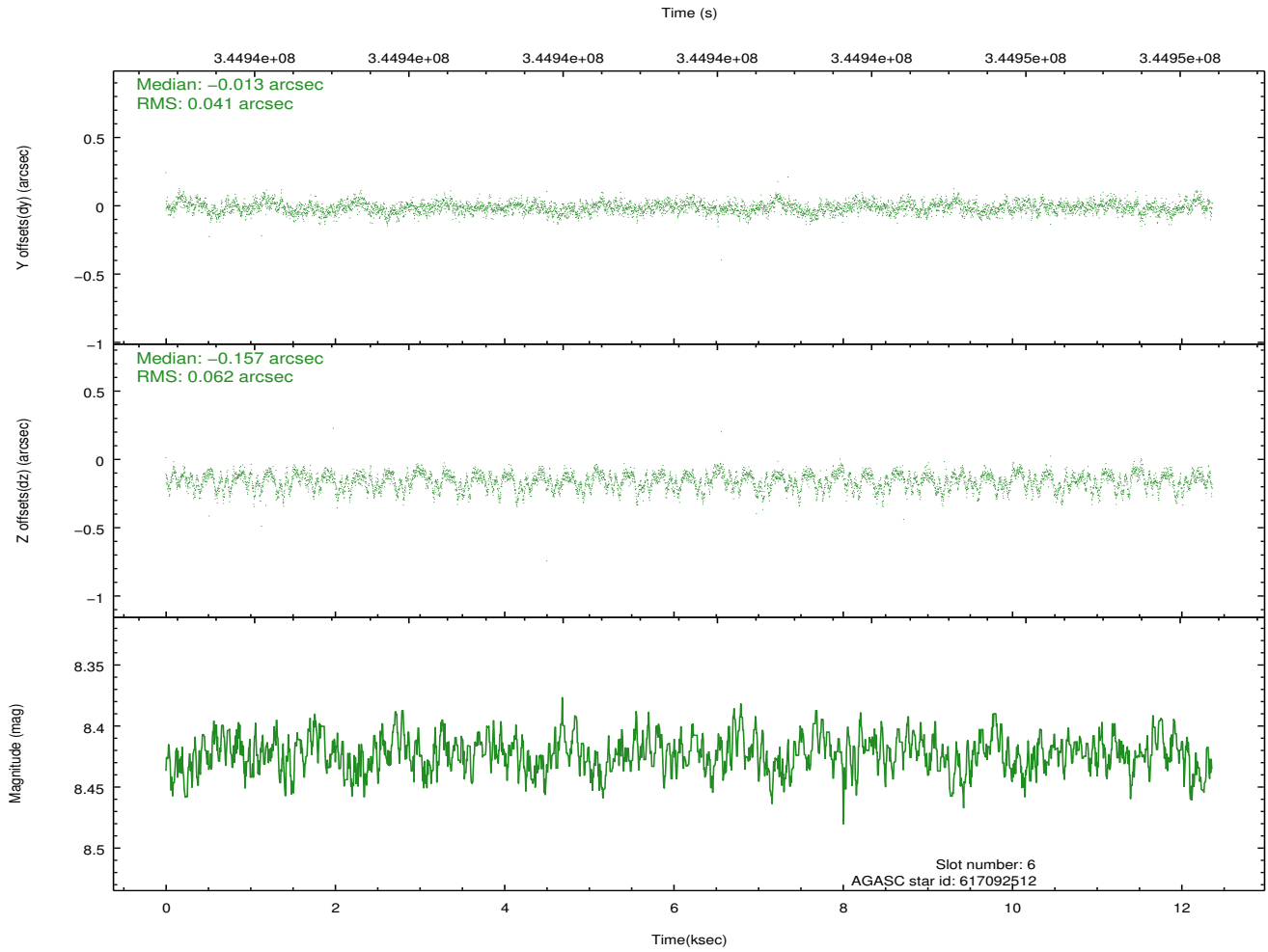
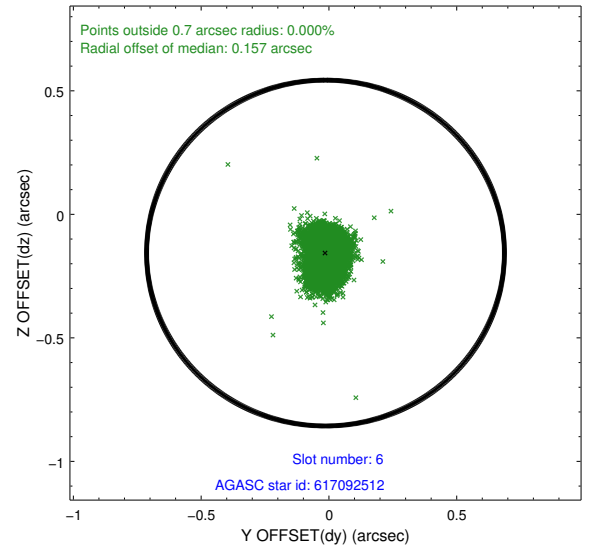
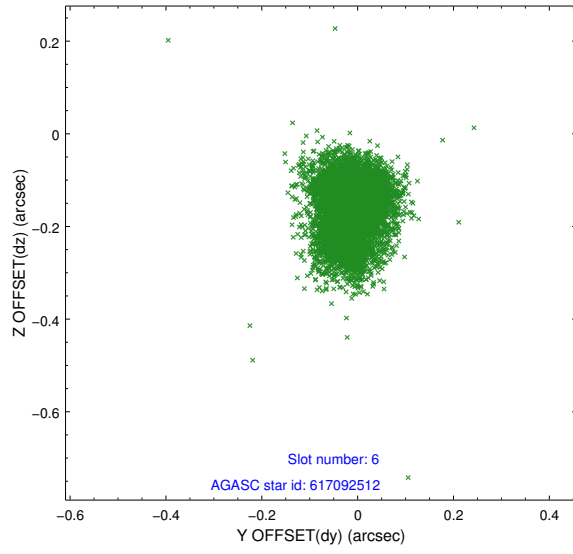
## 2.4.2 Slot 4



### 2.4.3 Slot 5

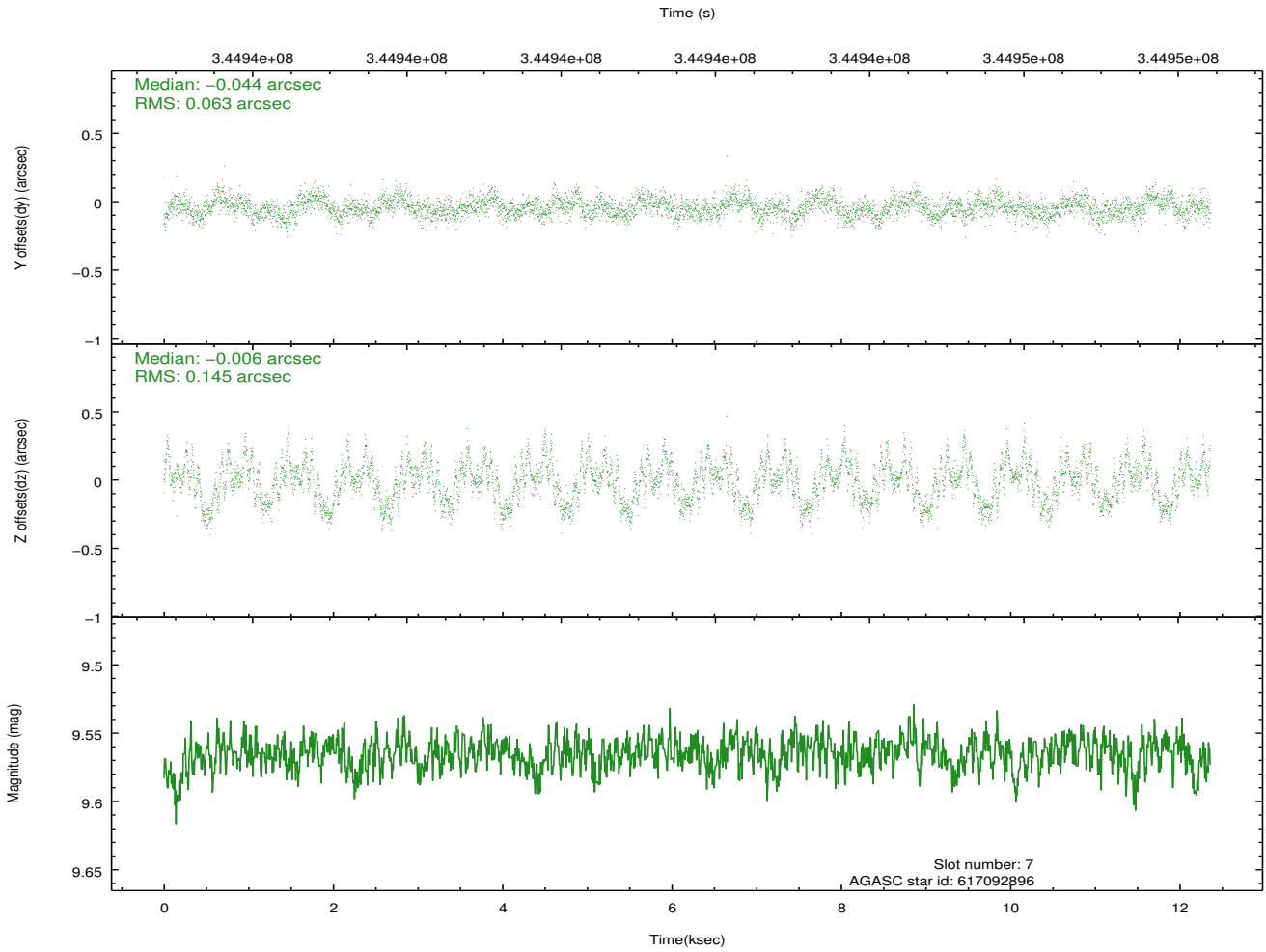
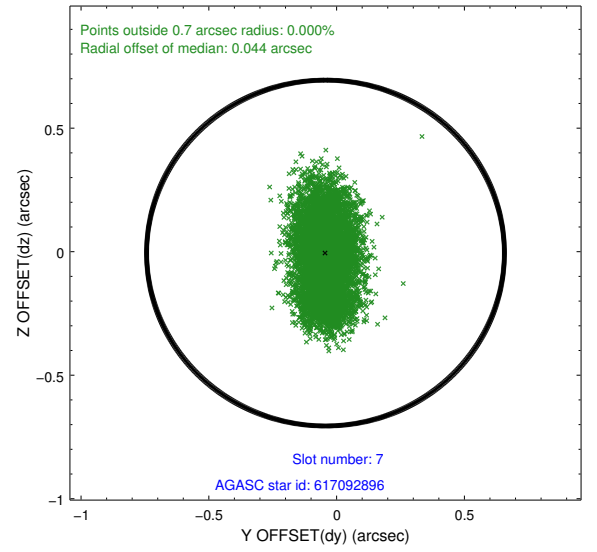
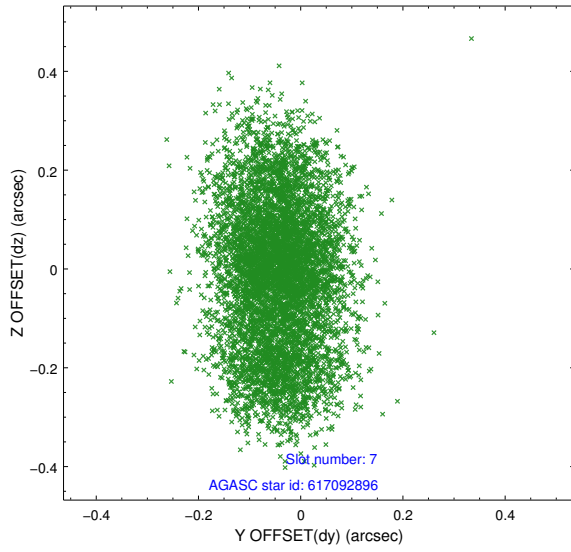


## 2.4.4 Slot 6



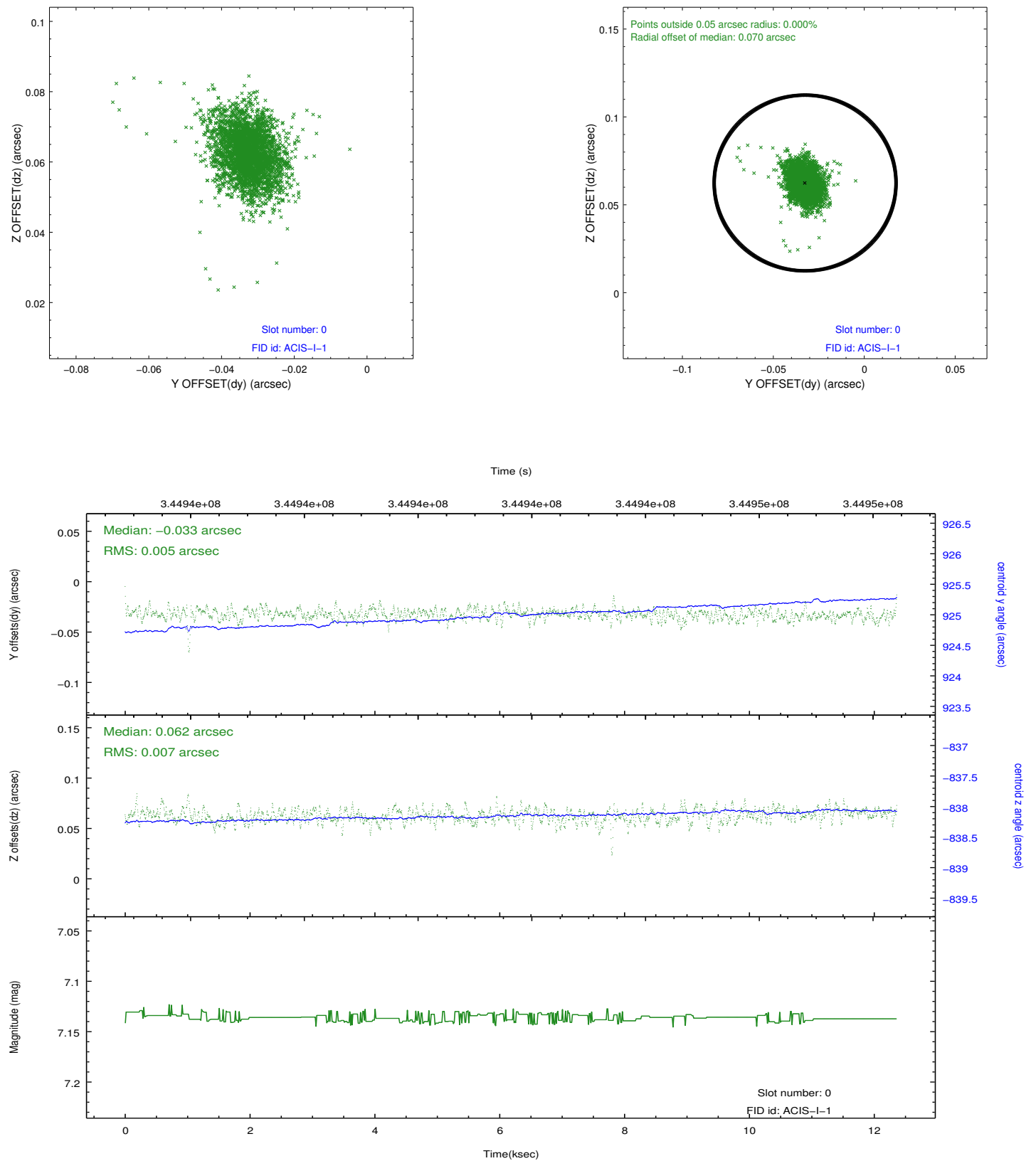


## 2.4.5 Slot 7

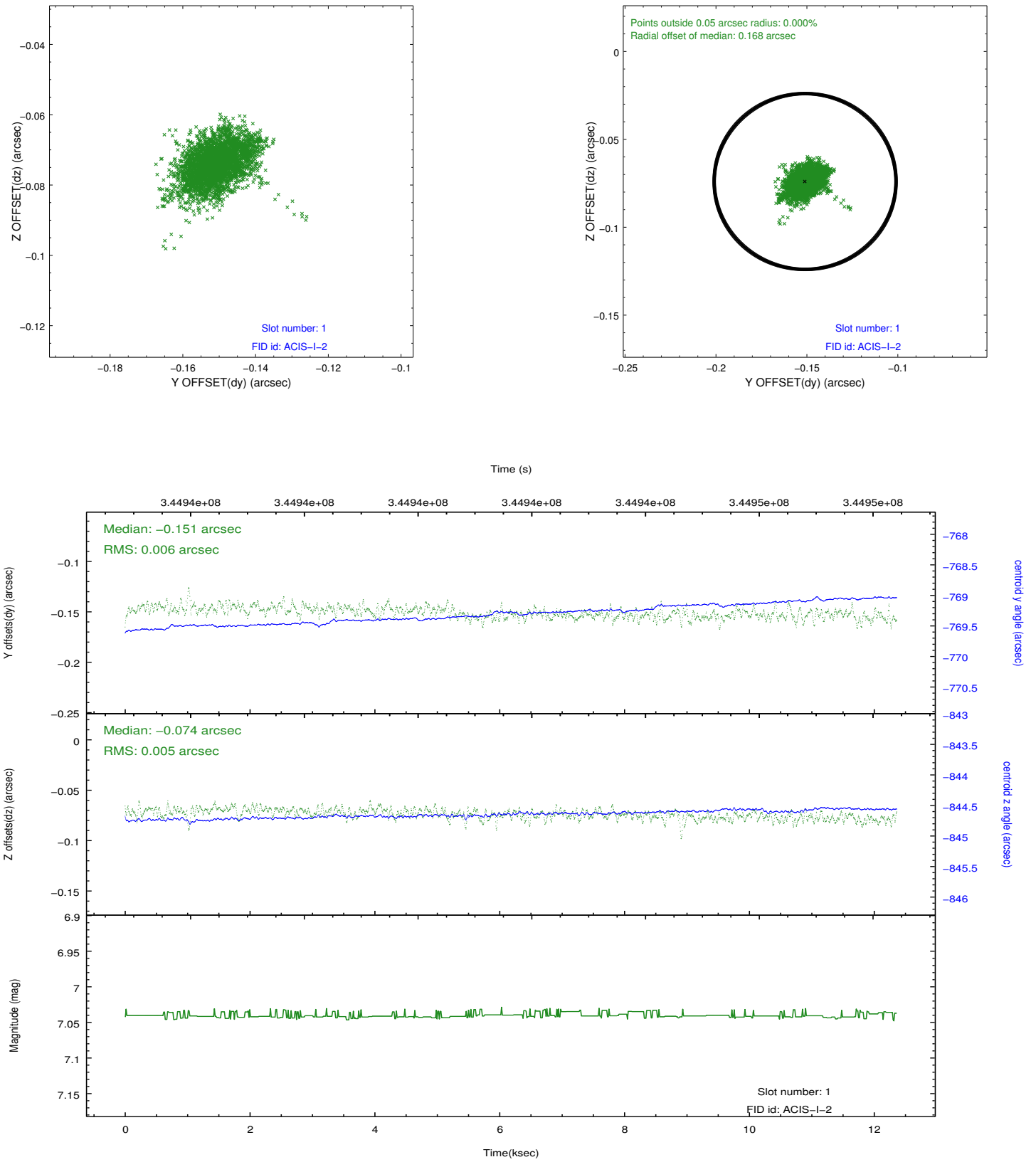


## 2.5 FID Slots

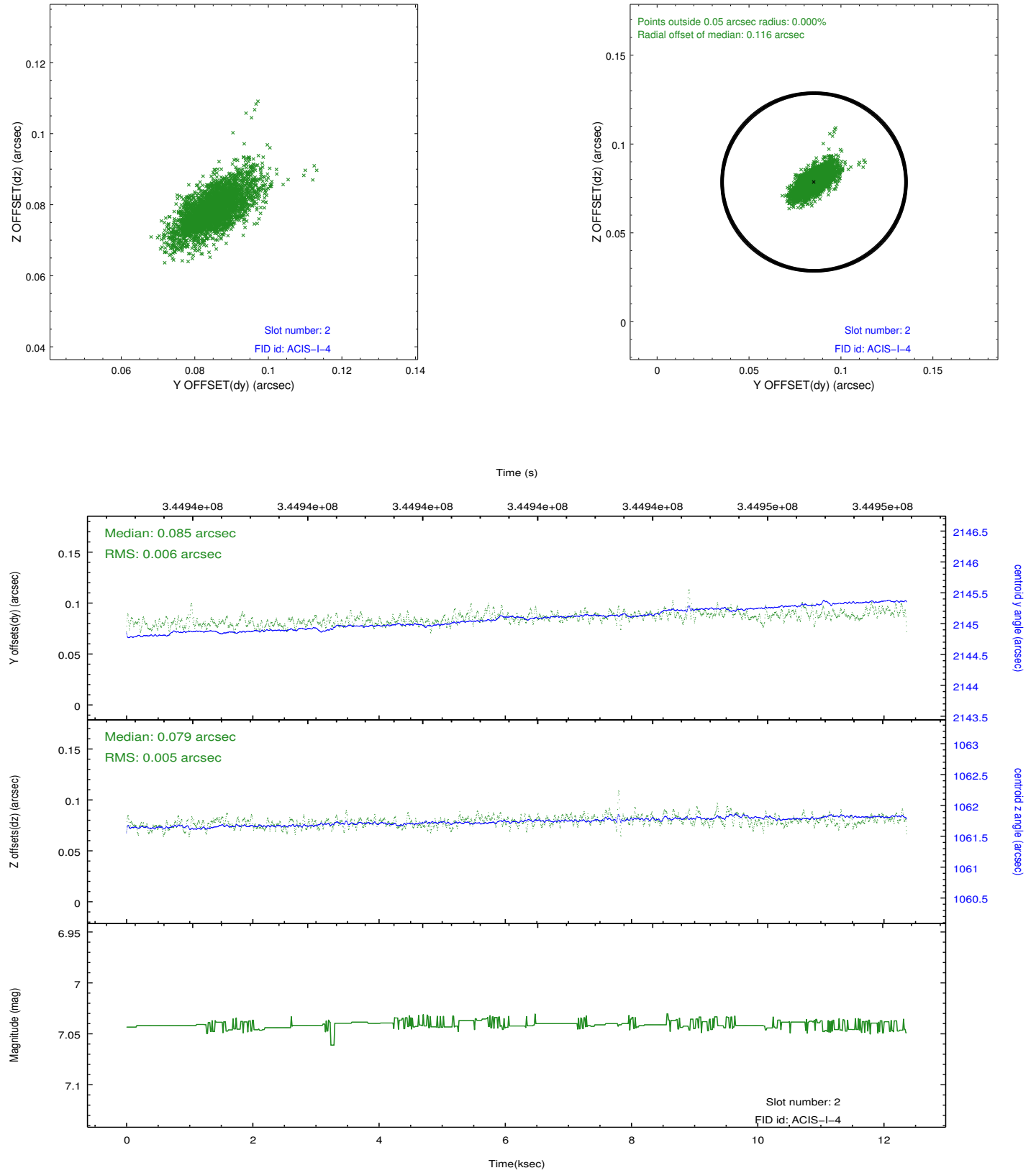
### 2.5.1 Slot 0



## 2.5.2 Slot 1



### 2.5.3 Slot 2



# A Summary

## A.1 Status

V&V Scientist	Jen Lauer
V&V Date (YYYY-MM-DD)	2012.06.01
V&V Edition	1
V&V Disposition and Status	OK
V&V Charge Time	11.0399999

## A.2 Comments

Joint Proposal: CX0-HST