

V&V Reference Report

L2 ASCDS Version : 8.4.5

Observation 10257 - L2 Version 2
Chandra X-Ray Center

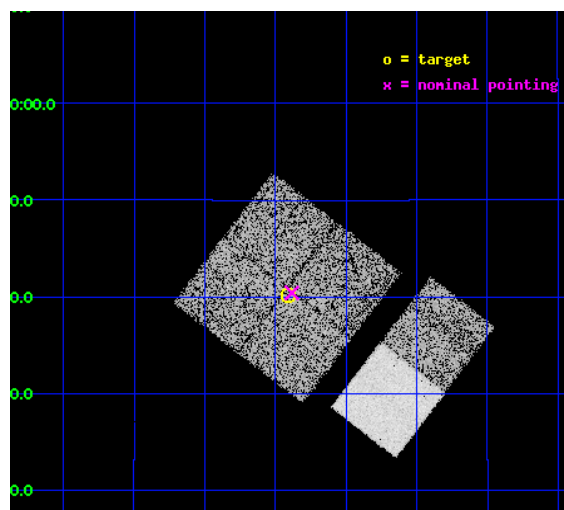
L2 Processing Date : Jun 11 2012

Contents

1	Front	2
2	OBI	3
2.1	OBI	3
2.1.1	Images	3
2.1.2	Bias	3
2.1.3	Parameters	4
2.1.4	Events	4
2.2	Compared Parameters	5
2.3	Aspect	6
2.4	Star Slots	9
2.4.1	Slot 3	9
2.4.2	Slot 4	10
2.4.3	Slot 5	11
2.4.4	Slot 6	12
2.4.5	Slot 7	13
2.5	FID Slots	14
2.5.1	Slot 0	14
2.5.2	Slot 1	15
2.5.3	Slot 2	16
A	Summary	17
A.1	Status	17
A.2	Comments	17

1 Front

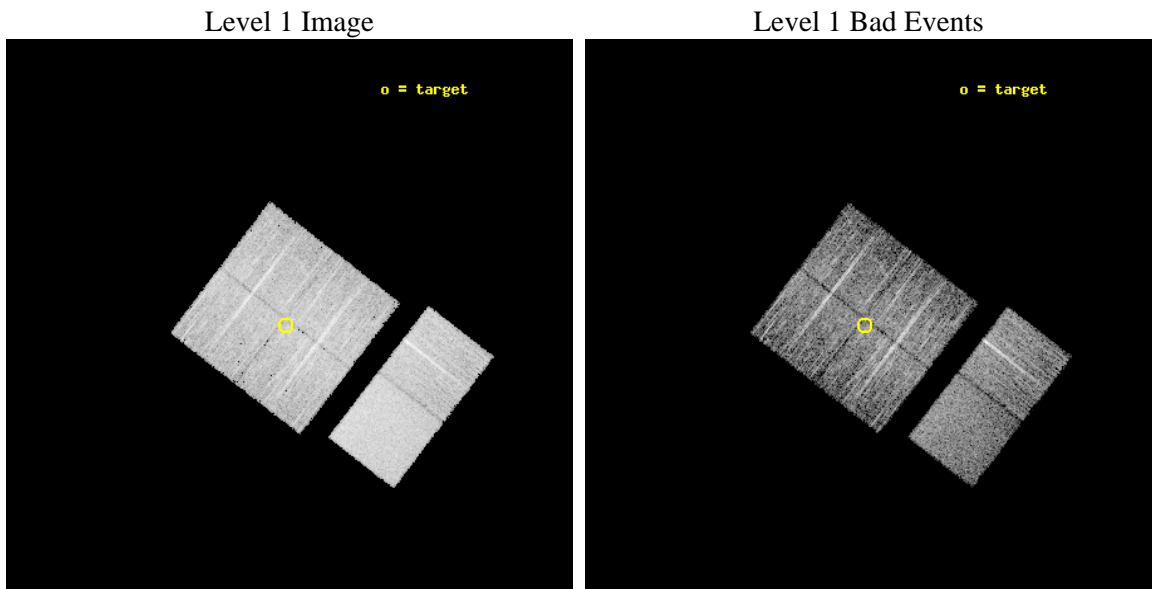
seq_num	701800	Sequence number
obs_id	10257	Observation id
title	Zeroing in on the sources of Ultrahigh Energy Cosmic Rays	Proposal
observer	Prof. Glennys Farrar	Principal investigator
object	NGC 7648	Source name
dtcycle	0	
cycle	P	events from which exps? Prim/Second/Both
ra_targ	350.9775	Observer's specified target RA [deg]
dec_targ	9.669111	Observer's specified target Dec [deg]
ra_nom	350.97078540976	Nominal RA [deg]
dec_nom	9.6736886718041	Nominal Dec [deg]
roll_nom	127.6100100752	Nominal Roll [deg]
revision	2	Processing version of data
ontime	4949.6063206792	Sum of GTIs [s]
livetime	4886.9314251516	Livetime [s]
ontime0	4949.4832006693	Sum of GTIs [s]
ontime1	4949.5242406726	Sum of GTIs [s]
ontime2	4949.5652806759	Sum of GTIs [s]
ontime3	4949.6063206792	Sum of GTIs [s]
ontime6	4949.6884006858	Sum of GTIs [s]
ontime7	4949.6473606825	Sum of GTIs [s]
l2events	55647	Number of level 2 events



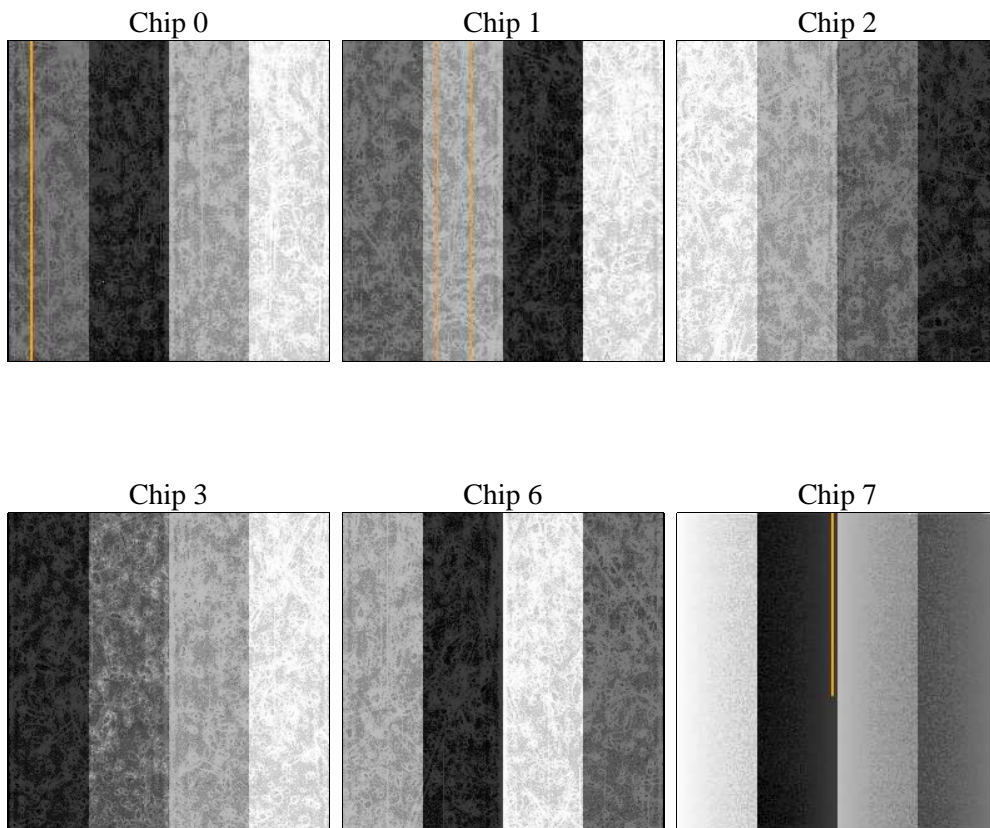
2 OBI

2.1 OBI

2.1.1 Images



2.1.2 Bias



2.1.3 Parameters

obi_num	0	Obi number	sched_exp_time	5000.000000	[s] Scheduled observation exposure time
ascdsver	8.4.5	Processing system revision	ontime	4949.6063206792	Sum of GTIs [s]
caldsver	4.4.10	 	ontime0	4949.4832006693	Sum of GTIs [s]
date	2012-06-11T14:19:35	Date and time of file creation	ontime1	4949.5242406726	Sum of GTIs [s]
revision	2	Processing version of data	ontime2	4949.5652806759	Sum of GTIs [s]
			ontime3	4949.6063206792	Sum of GTIs [s]
			ontime6	4949.6884006858	Sum of GTIs [s]
			ontime7	4949.6473606825	Sum of GTIs [s]
			l1events	320413	Number of level 1 events

2.1.4 Events

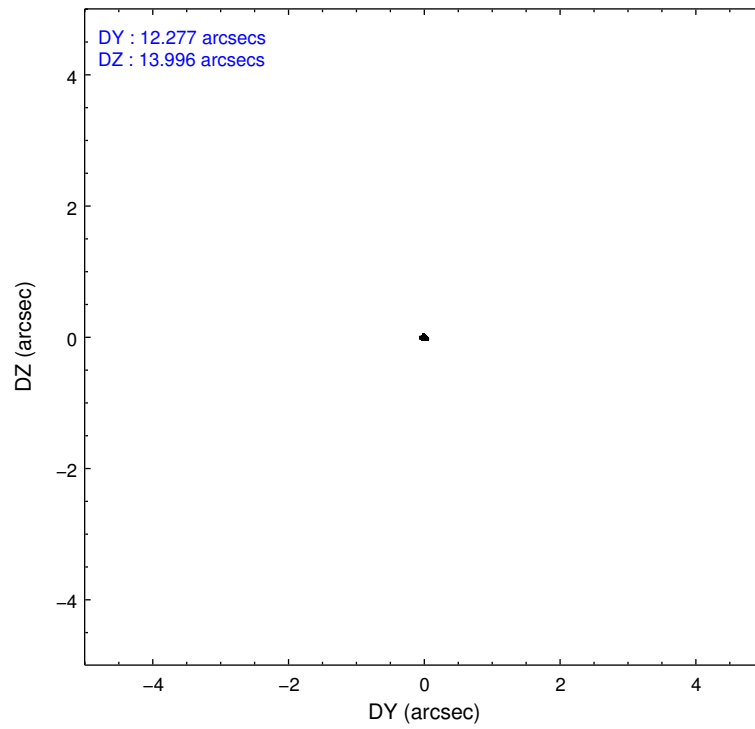
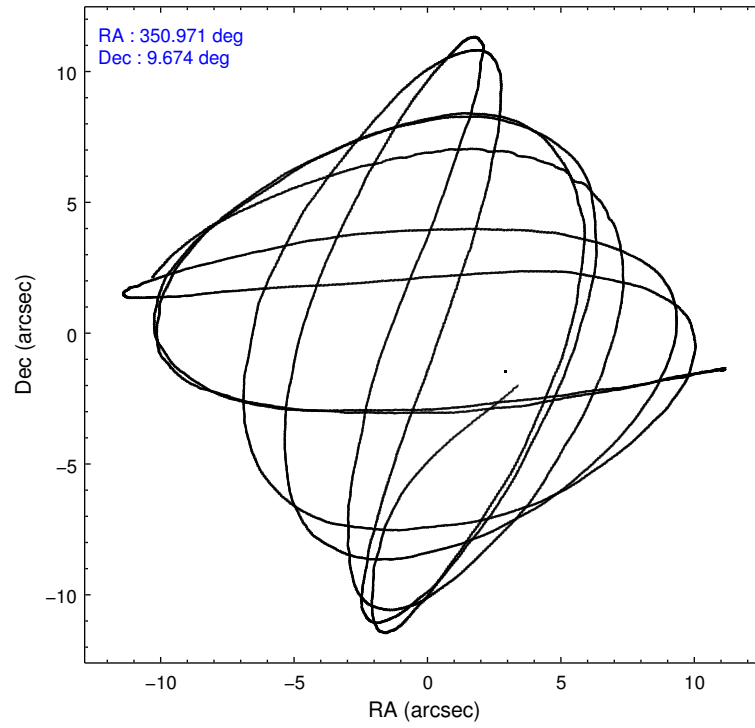
	ccd 0	ccd 1	ccd 2	ccd 3	ccd 6	ccd 7		ccd 0	ccd 1	ccd 2	ccd 3	ccd 6	ccd 7
level 1 events	46084	48079	50668	49478	54612	71492	grade 0 events	2680	2467	2519	2723	2397	2471
rejected events	39773	41538	44738	43354	48275	42165		5%	5%	4%	5%	4%	3%
rejected %	86%	86%	88%	87%	88%	58%	grade 1 events	35	30	30	35	36	67
								0%	0%	0%	0%	0%	0%
							grade 2 events	1430	1631	1246	1188	1511	6046
								3%	3%	2%	2%	2%	8%
							grade 3 events	571	592	553	522	539	2387
								1%	1%	1%	1%	0%	3%
							grade 4 events	537	562	562	600	593	2339
								1%	1%	1%	1%	1%	3%
							grade 5 events	2220	2229	1986	2443	2521	6556
								4%	4%	3%	4%	4%	9%
							grade 6 events	1100	1294	1058	1098	1308	16117
								2%	2%	2%	2%	2%	22%
							grade 7 events	37511	39274	42714	40869	45707	35509
								81%	81%	84%	82%	83%	49%

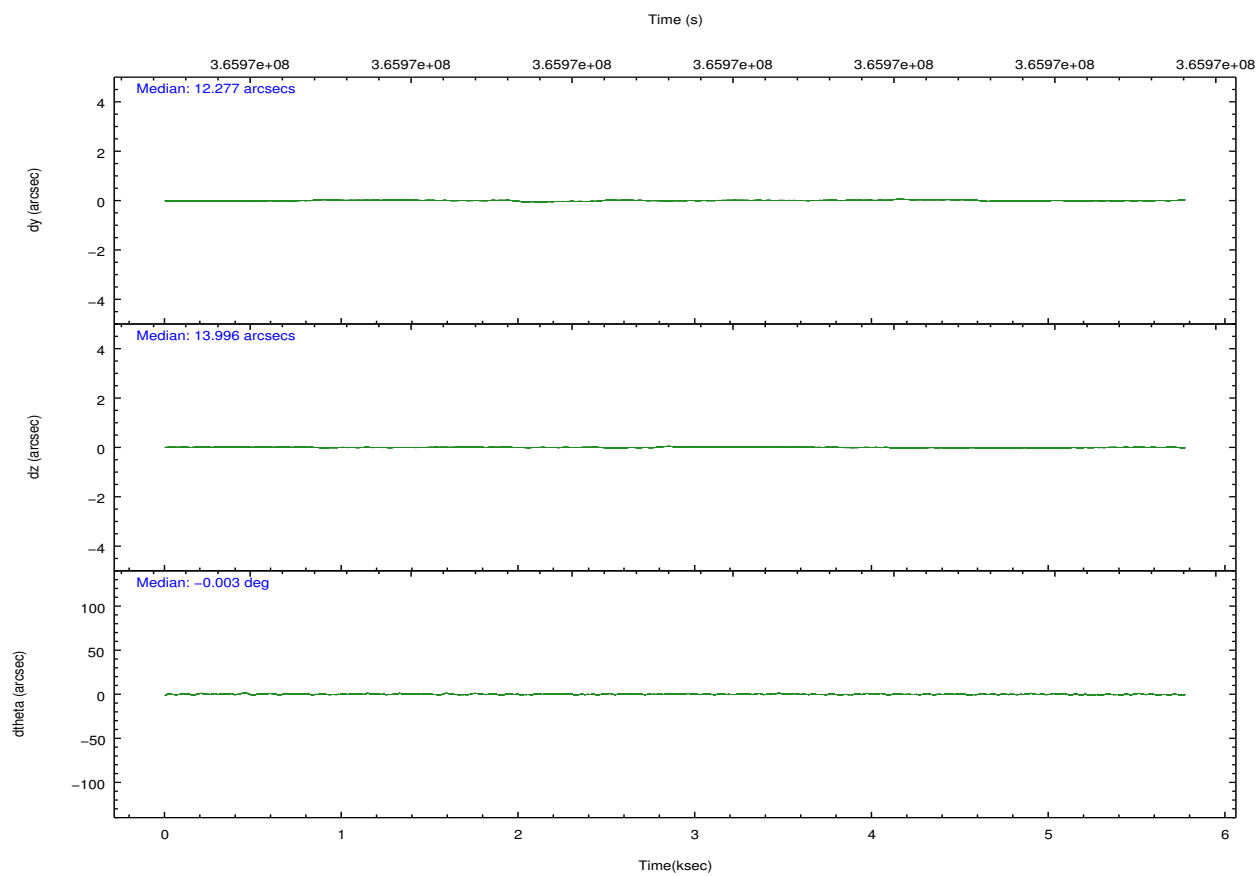
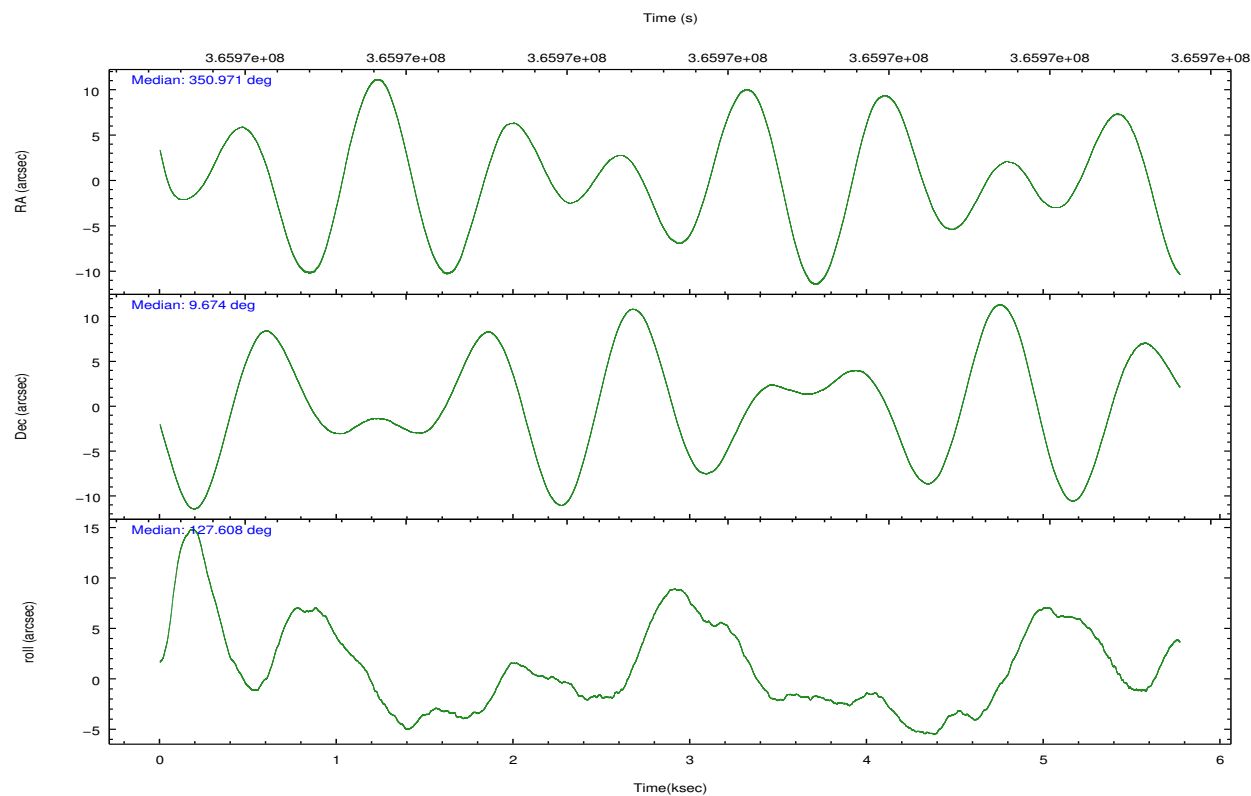
2.2 Compared Parameters

Parameter	Planned	Actual
Instrument	ACIS	ACIS
Detector	ACIS-012367	ACIS-012367
Grating	NONE	NONE
Data mode	FAINT	FAINT
Observation mode	POINTING	POINTING
[deg] Pointing RA	350.996623	350.9707854097647
[deg] Pointing Dec	9.663384	9.673688671804051
[deg] Pointing Roll	127.396988	127.6100100751956
[mm] SIM focus pos	-0.782348	-0.7809083437167272
[mm] SIM defocus	0	0.001439871863259334
[mm] SIM translation stage pos	-233.592463	-233.5874344608287
[mm] SIM translation stage offset	0	-0.005018542100998502
[s] Observation start time (MET)	365966534.184000	365965279.2839
Observation start date	2009-08-06T17:21:08	2009-08-06T17:01:19
[s] Observation end time (MET)	365971534.184000	365971828.52173
Observation end date	2009-08-06T18:44:28	2009-08-06T18:50:28
Read mode	TIMED	TIMED

Parameter	Planned	Actual
Obspar format version number	7	7
Obspar file type	PREDICTED	ACTUAL
Obspar update status	NONE	UPDATED
CCD I0 on	Y	Y
CCD I1 on	Y	Y
CCD I2 on	Y	Y
CCD I3 on	Y	Y
CCD S0 on	N	N
CCD S1 on	N	N
CCD S2 on	O1	Y
CCD S3 on	O2	Y
CCD S4 on	N	N
CCD S5 on	N	N
Number of optional ACIS chips dropped	0	0
On-chip summing requested	N	N
Subarray requested	NONE	NONE
Alternating exposures requested	N	N
[s] Primary exposure time	0.000000	3.2

2.3 Aspect



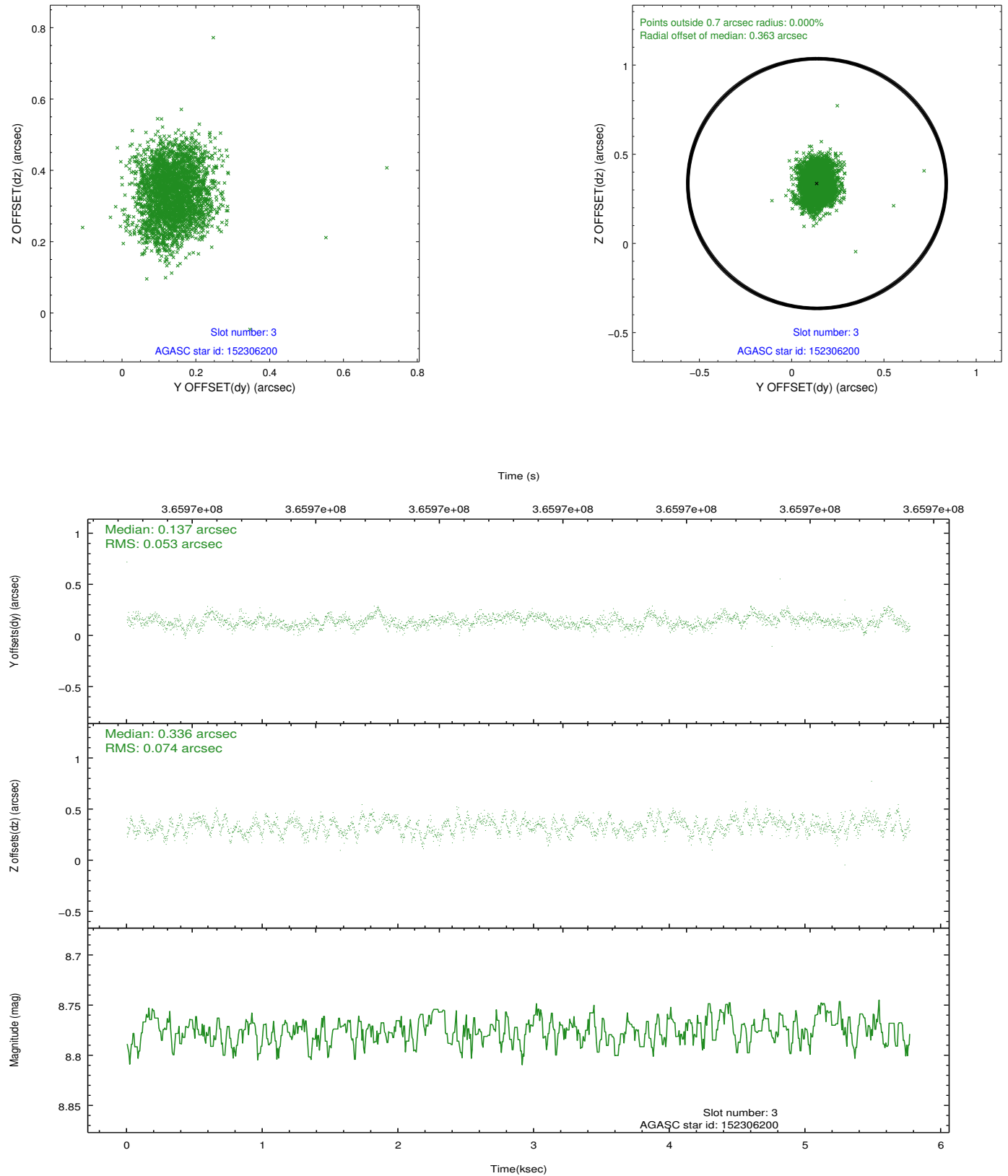


Slot Statistics

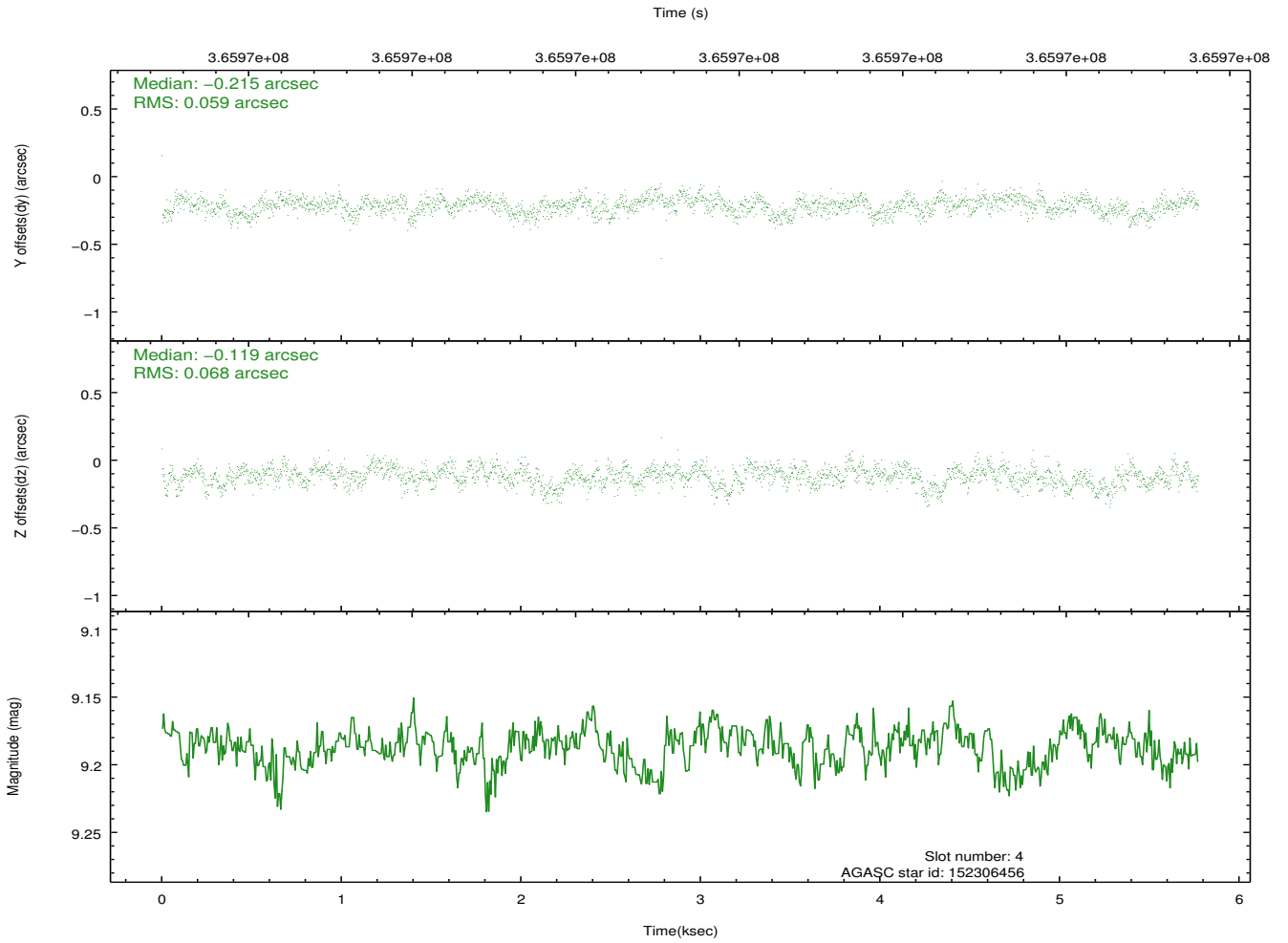
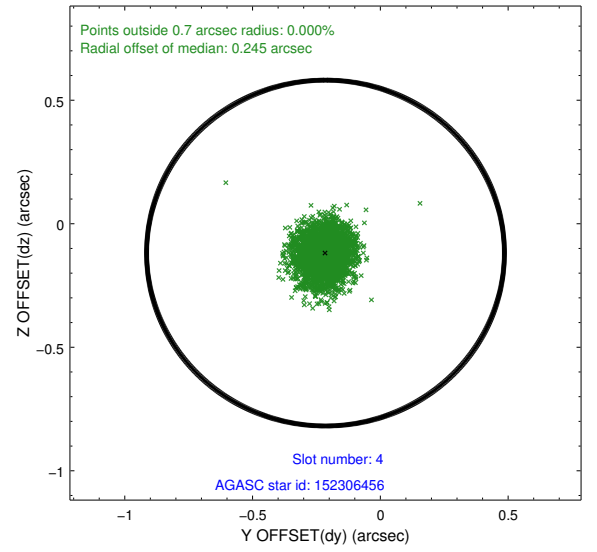
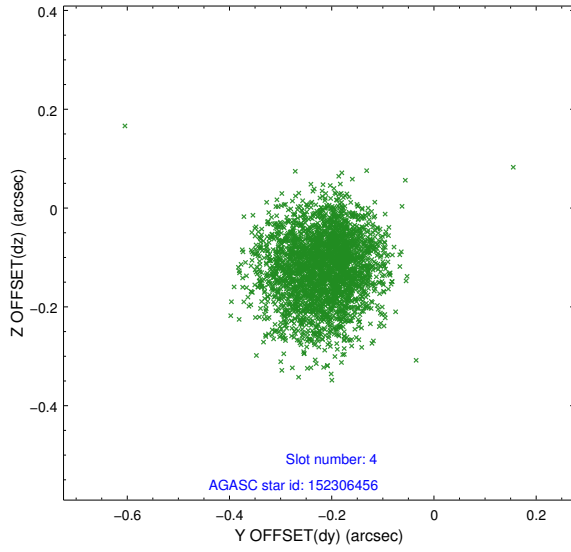
slot	status	id	mag	n_pts	med_dy	med_dz	dr1	dr2	ra	dec	mean_y	mean_z
0	FID	ACIS-I-1	7.14	1408	0.031	0.009	0.007	0.013	0.000000	0.000000	927.30	-837.54
1	FID	ACIS-I-5	7.14	1408	-0.193	0.044	0.007	0.012	0.000000	0.000000	-1820.49	1059.42
2	FID	ACIS-I-6	7.14	1408	0.070	0.018	0.007	0.012	0.000000	0.000000	391.72	1705.10
3	GUIDE	152306200	8.78	2813	0.137	0.336	0.095	0.151	351.665179	9.749829	-1190.76	-2074.43
4	GUIDE	152306456	9.19	2806	-0.215	-0.119	0.096	0.151	350.245486	9.648048	1577.02	2148.74
5	GUIDE	152307016	9.86	2812	-0.132	-0.191	0.157	0.240	350.647950	9.897068	1420.88	471.83
6	GUIDE	152313544	10.41	2805	-0.012	-0.237	0.261	0.392	350.745956	9.268686	-586.67	1570.78
7	GUIDE	152318752	10.47	2807	0.218	0.232	0.204	0.336	351.641258	9.476062	-1923.64	-1409.07

2.4 Star Slots

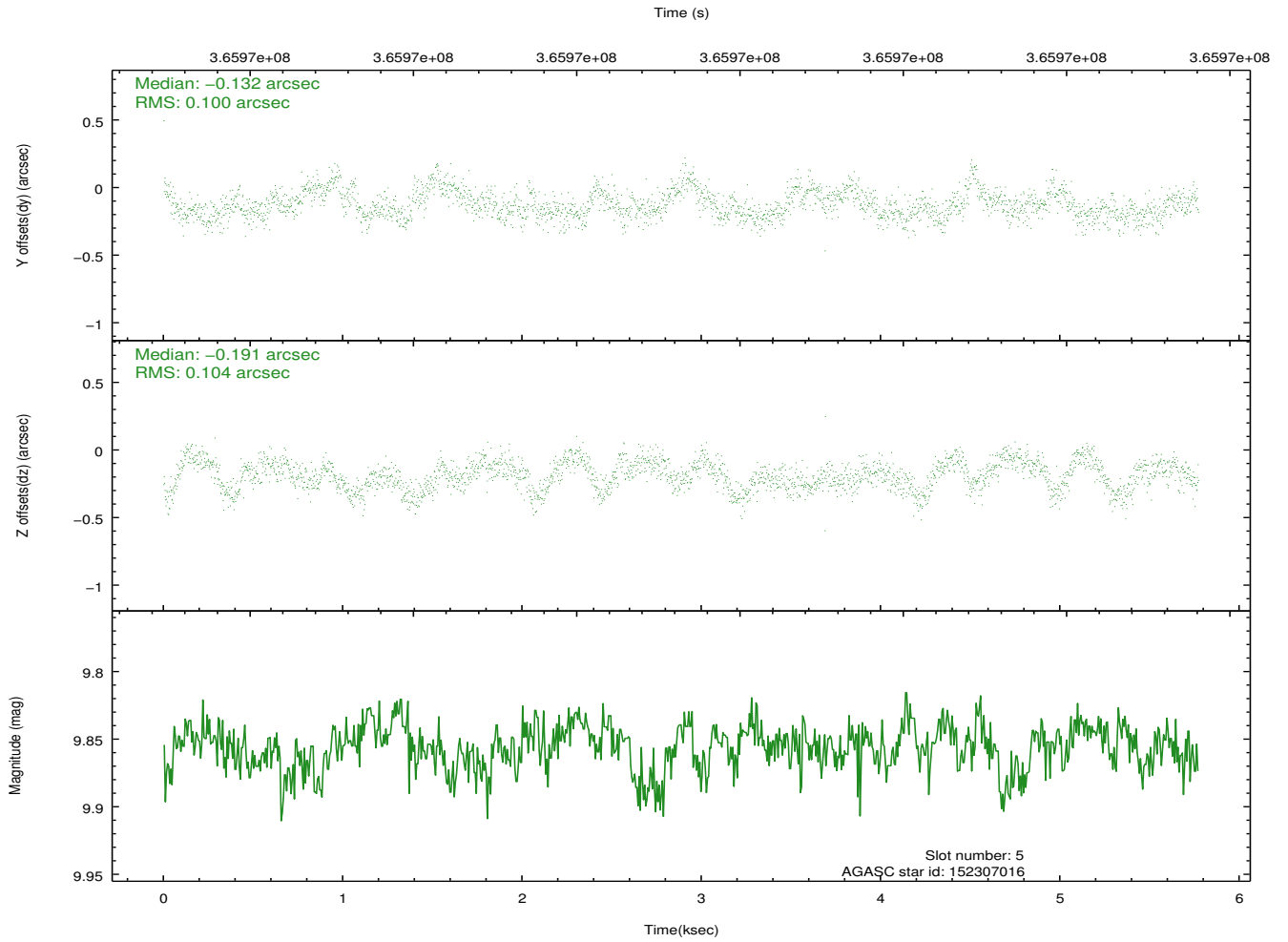
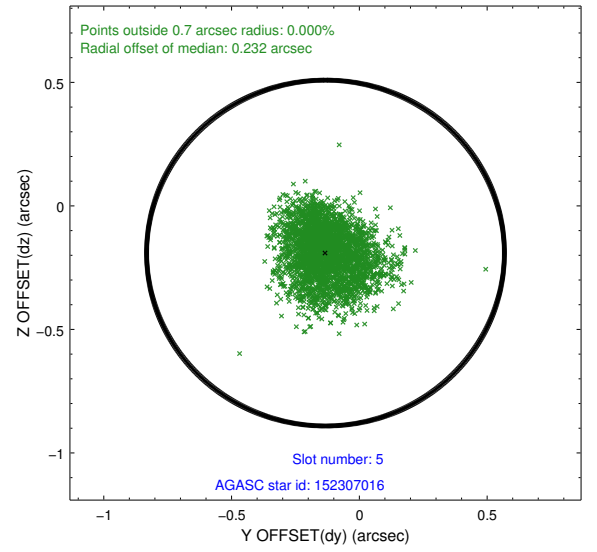
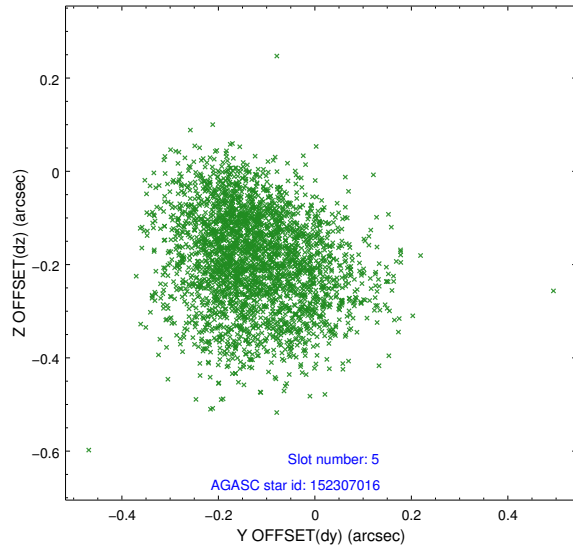
2.4.1 Slot 3



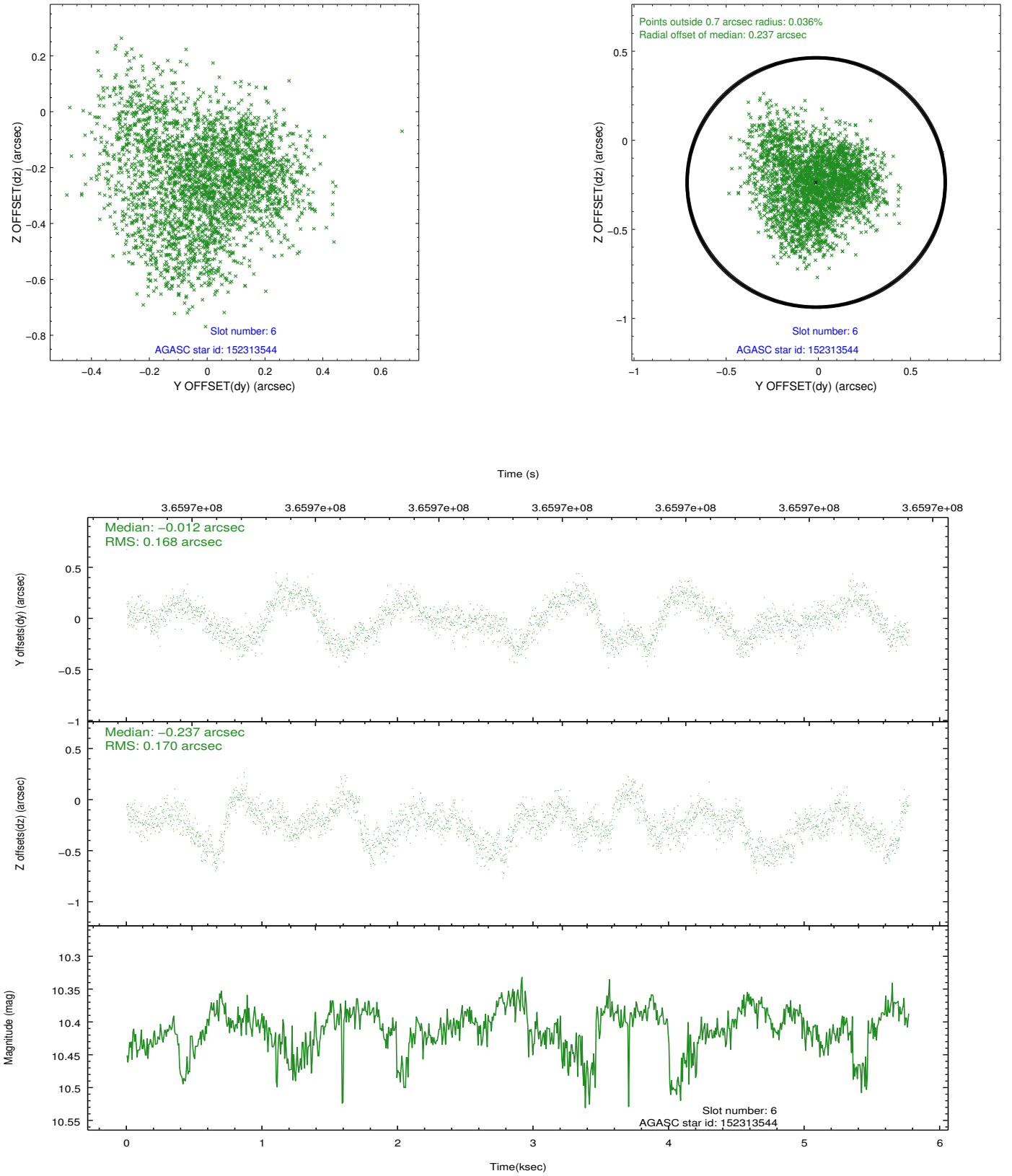
2.4.2 Slot 4



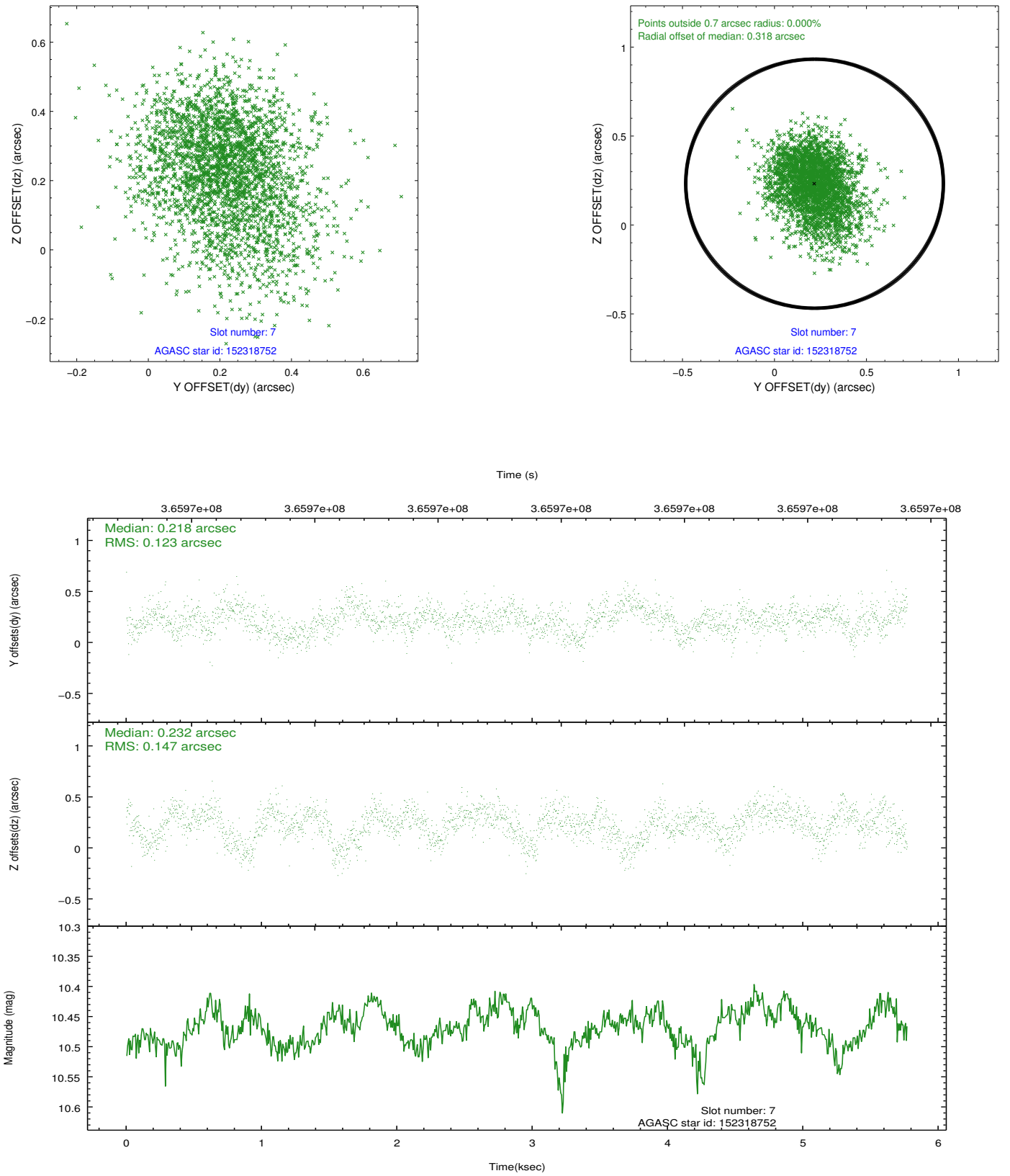
2.4.3 Slot 5



2.4.4 Slot 6

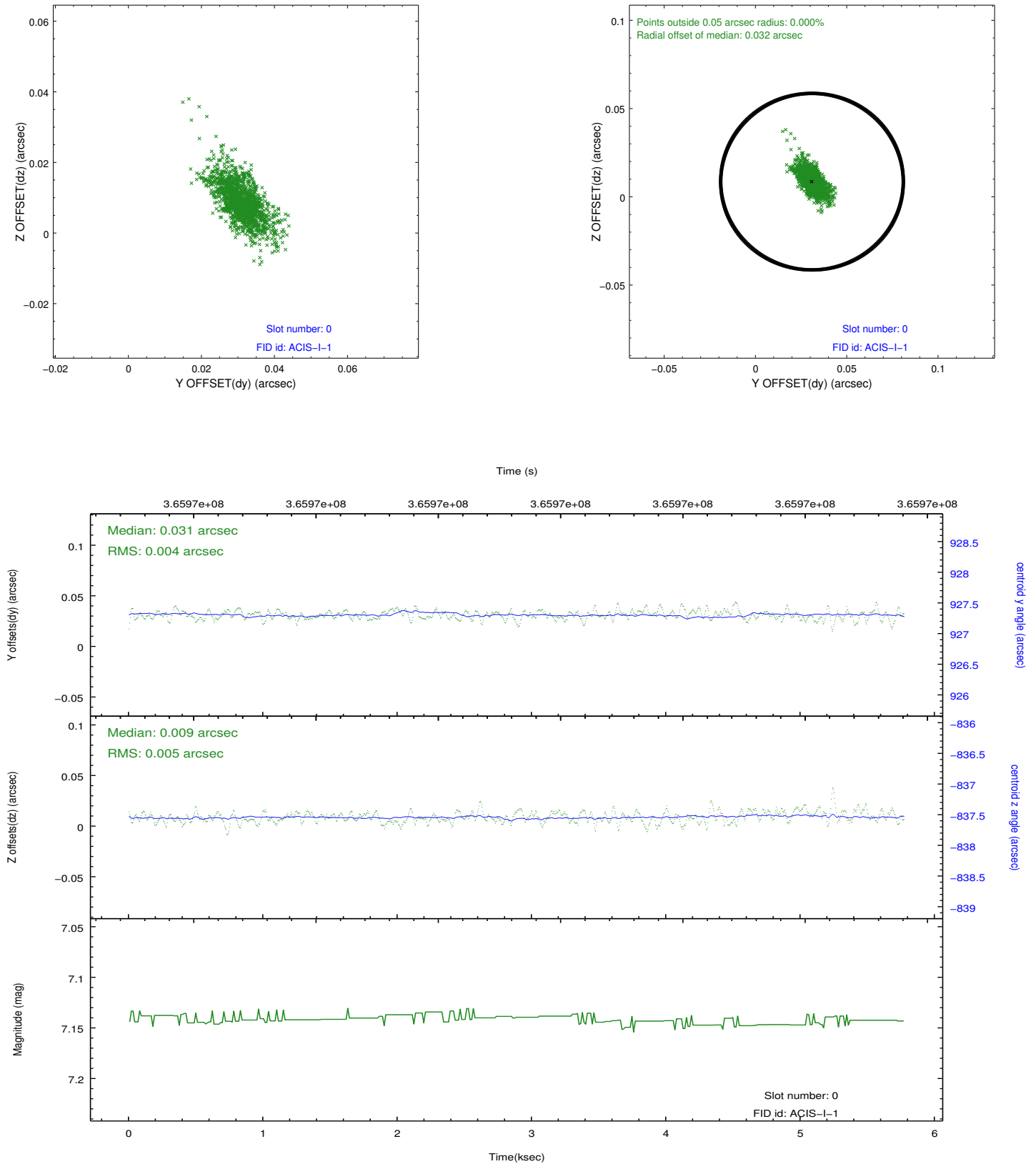


2.4.5 Slot 7

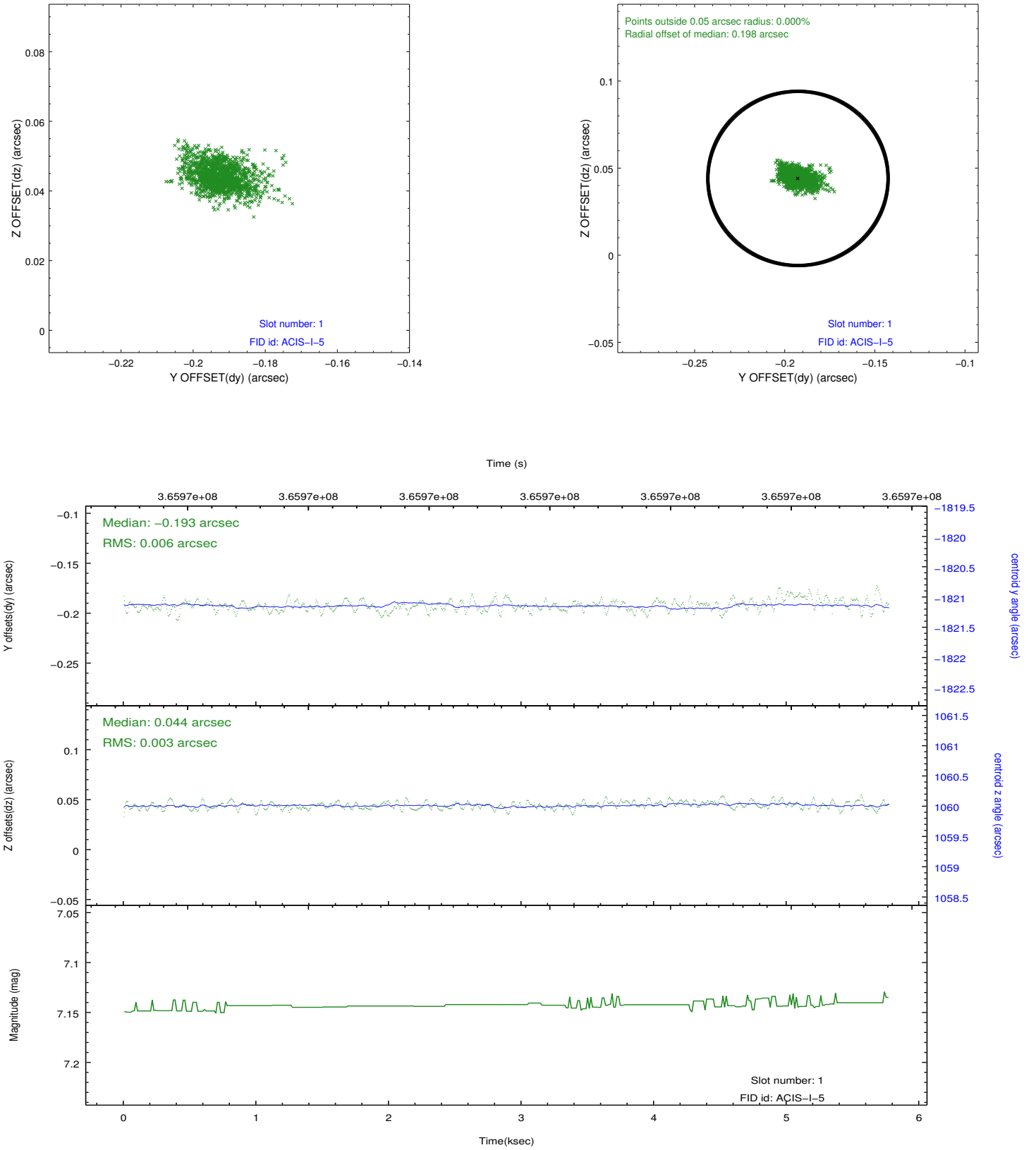


2.5 FID Slots

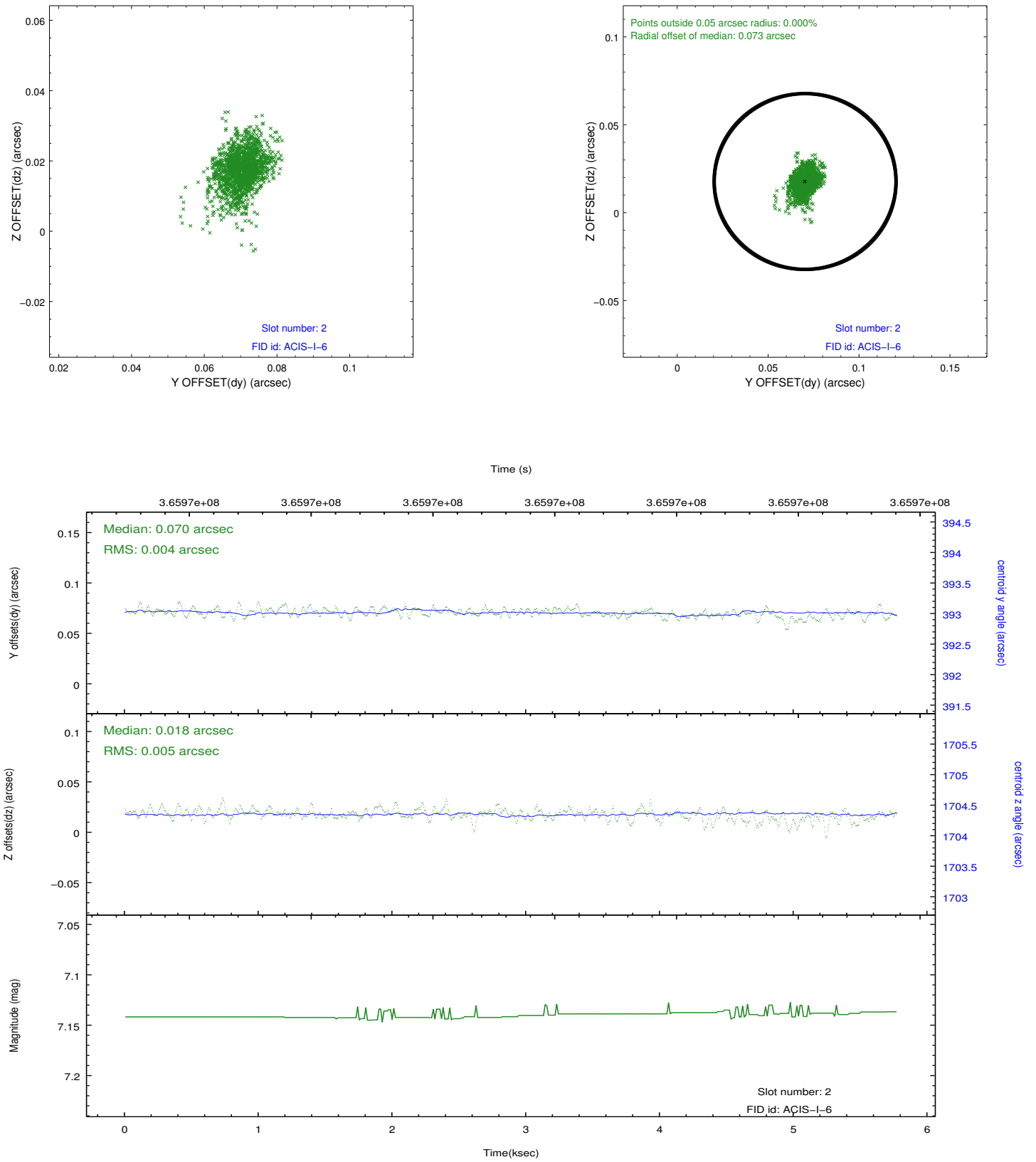
2.5.1 Slot 0



2.5.2 Slot 1



2.5.3 Slot 2



A Summary

A.1 Status

V&V Scientist	Beth Sundheim
V&V Date (YYYY-MM-DD)	2012.06.14
V&V Edition	1
V&V Disposition and Status	OK
V&V Charge Time	4.9496063261032

A.2 Comments