

V&V Reference Report

L2 ASCDS Version : 8.4.4

Observation 9626 - L2 Version 3
Chandra X-Ray Center

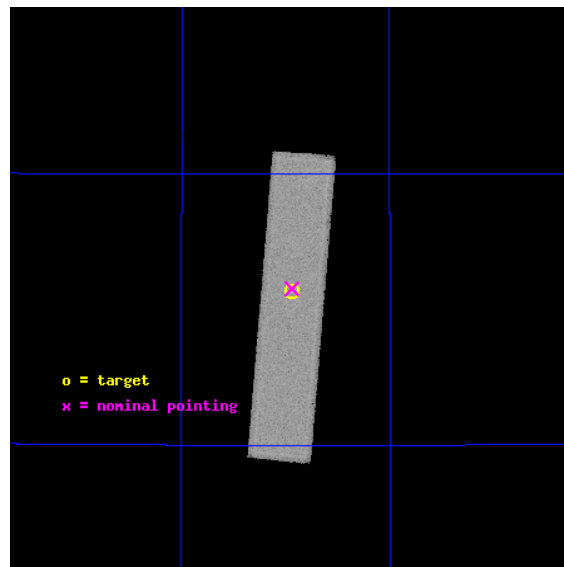
L2 Processing Date : Aug 12 2012

Contents

1	Front	2
2	OBI	3
2.1	OBI	3
2.1.1	Images	3
2.1.2	Parameters	4
2.1.3	Events	4
2.2	Compared Parameters	5
2.3	Aspect	6
2.4	Star Slots	9
2.4.1	Slot 3	9
2.4.2	Slot 4	10
2.4.3	Slot 5	11
2.4.4	Slot 6	12
2.4.5	Slot 7	13
2.5	FID Slots	14
2.5.1	Slot 0	14
2.5.2	Slot 1	15
2.5.3	Slot 2	16
A	Summary	17
A.1	Status	17
A.2	Comments	17

1 Front

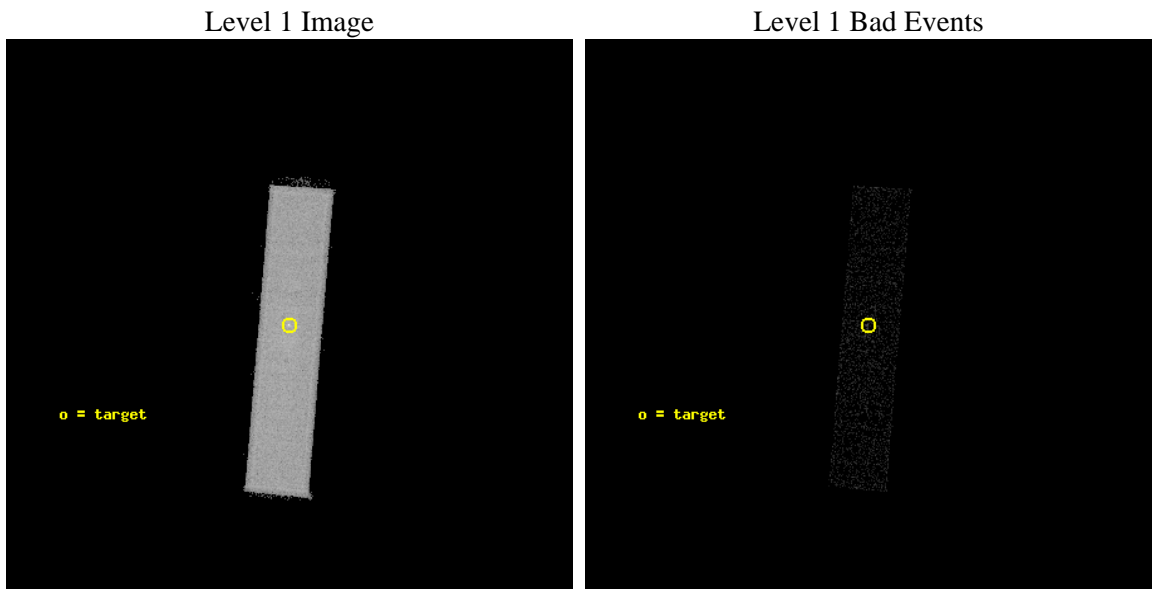
seq_num	290749	Sequence number
obs_id	9626	Observation id
title	AO9 Measurements of the optical/UV Transmission of the HRC Filters.	
observer	Dr. CXC Calibration	Principal investigator
object	Vega	Source name
ra_targ	279.235	Observer's specified target RA [deg]
dec_targ	38.783778	Observer's specified target Dec [deg]
ra_nom	279.2348414485	Nominal RA [deg]
dec_nom	38.788596180044	Nominal Dec [deg]
roll_nom	94.734076608851	Nominal Roll [deg]
revision	3	Processing version of data
ontime	2151.7313547134	[s]
livetime	2134.1898792628	Ontime multiplied by DTCOR
l2events	120681	Number of level 2 events



2 OBI

2.1 OBI

2.1.1 Images



2.1.2 Parameters

obi_num	0	Obi number	sched_exp_time	2000.000000	[s] Scheduled observation exposure time
ascdsver	8.4.5	Processing system revision	ontime	2151.7313547134	[s]
caldsver	4.5.1.1	 	l1events	158873	Number of level 1 events
date	2012-08-12T11:26:40	Date and time of file creation			
revision	3	Processing version of data			

2.1.3 Events

Level 1 Events

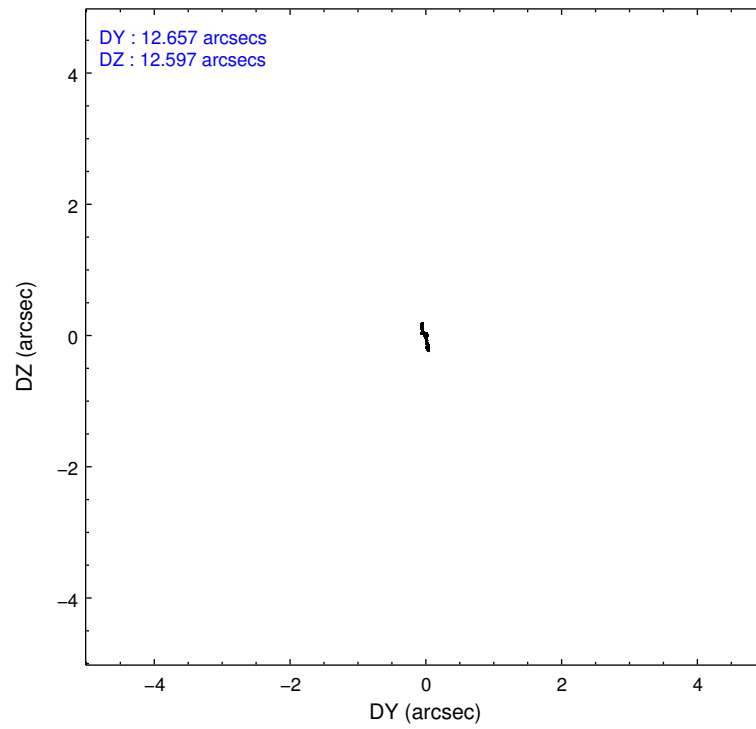
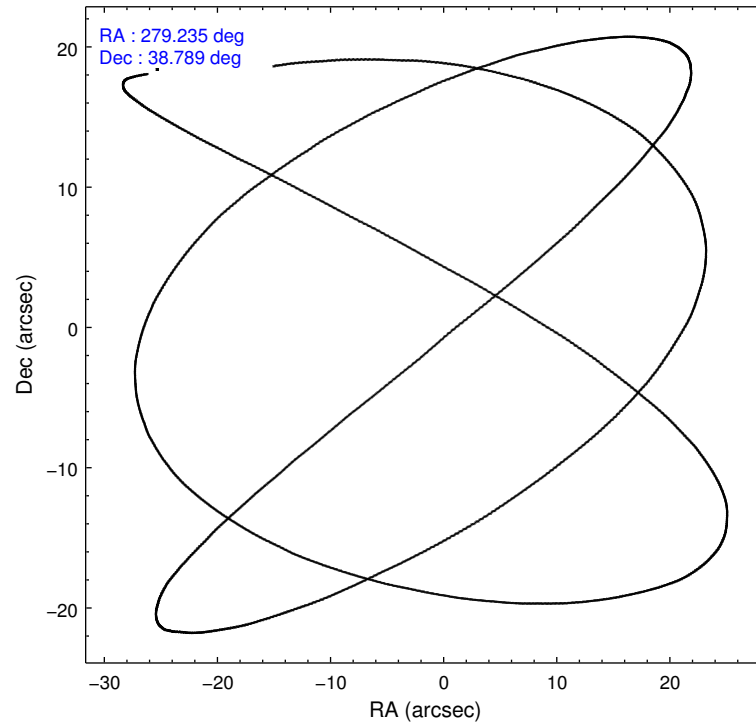
	segment 1	segment 2	segment 3
level 1 events	0	158873	0
rejected events	0	11633	0
rejected %	0%	7%	0%

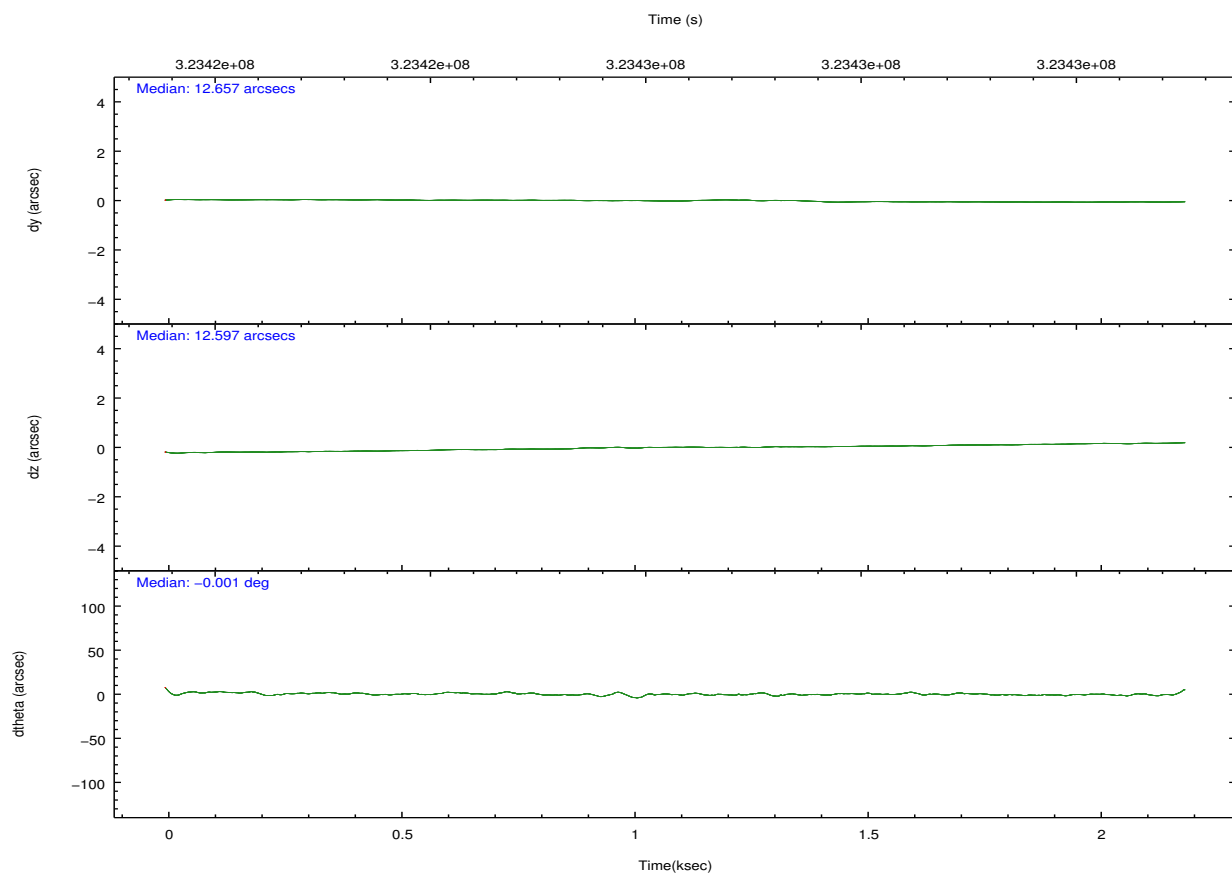
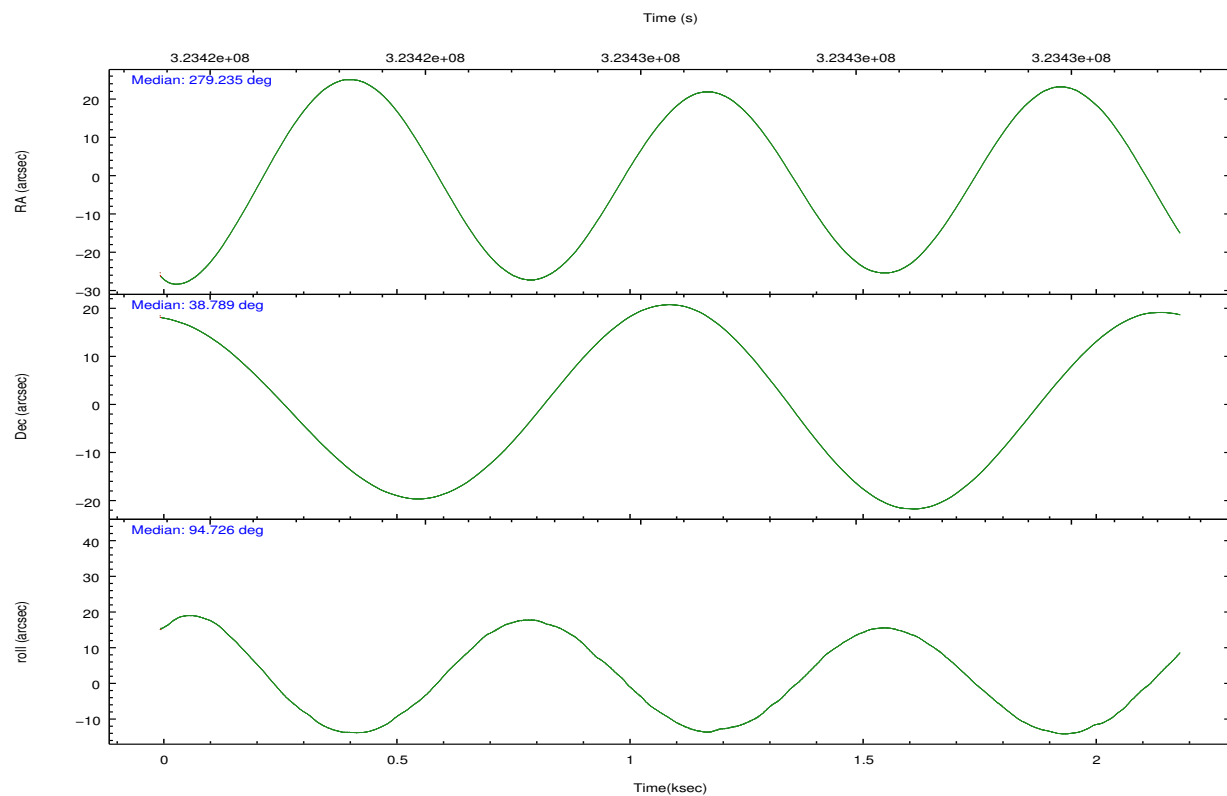
2.2 Compared Parameters

Parameter	Planned	Actual
Instrument	HRC	HRC
Detector	HRC-S	HRC-S
Grating	NONE	NONE
Data mode	OBSERVING	OBSERVING
Observation mode	POINTING	POINTING
[deg] Pointing RA	279.257048	279.2348414484971
[deg] Pointing Dec	38.765782	38.78859618004429
[deg] Pointing Roll	94.652842	94.73407660885142
[s] Window start time (MET)	320716865.184000	320716865.184000
[s] Window stop time (MET)	328579265.184000	328579265.184000
[mm] SIM focus pos	-1.533336	-1.526339935833849
[mm] SIM defocus	7.710433287538843e-07	0.006996703570447904
[mm] SIM translation stage pos	250.455976	250.4635187648994
[mm] SIM translation stage offset	0	-0.007540371344731511
[s] Observation start time (MET)	323424661.184000	323424285.23596
Observation start date	2008-04-01T08:09:56	2008-04-01T08:04:45
[s] Observation end time (MET)	323426661.184000	323426794.94859
Observation end date	2008-04-01T08:43:16	2008-04-01T08:46:34

Parameter	Planned	Actual
Obspar format version number	7	7
Obspar file type	PREDICTED	ACTUAL
Obspar update status	NONE	UPDATED

2.3 Aspect



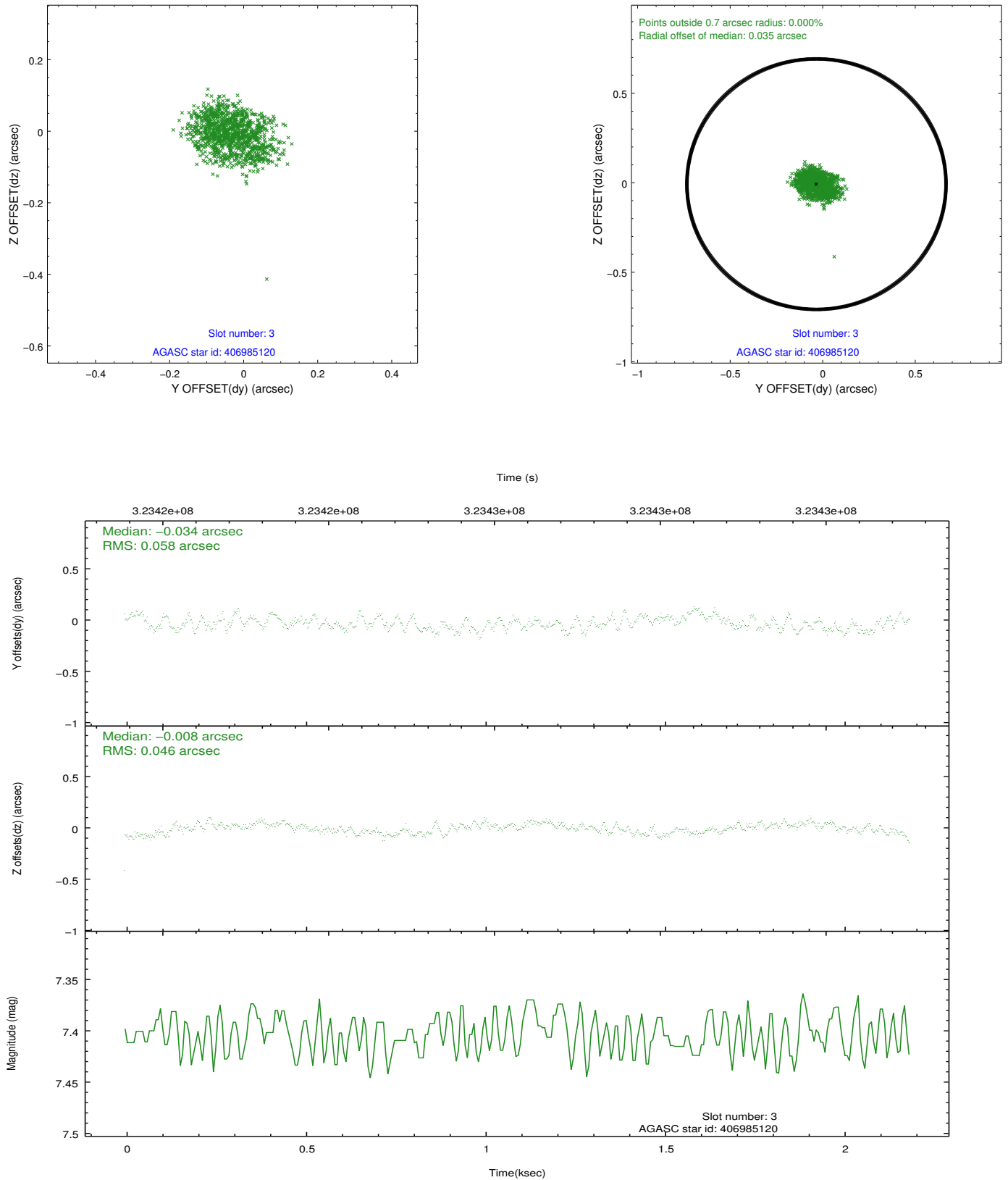


Slot Statistics

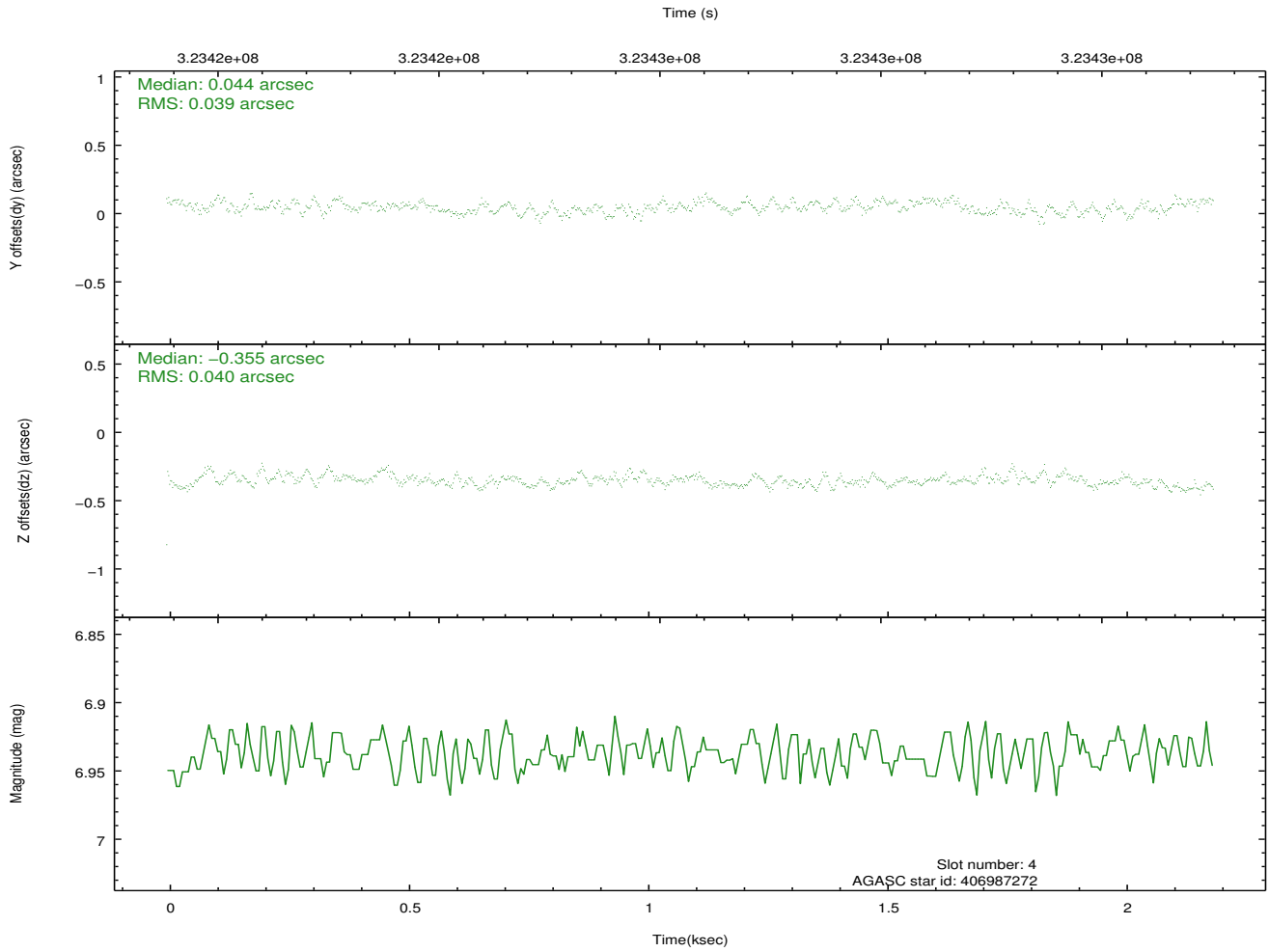
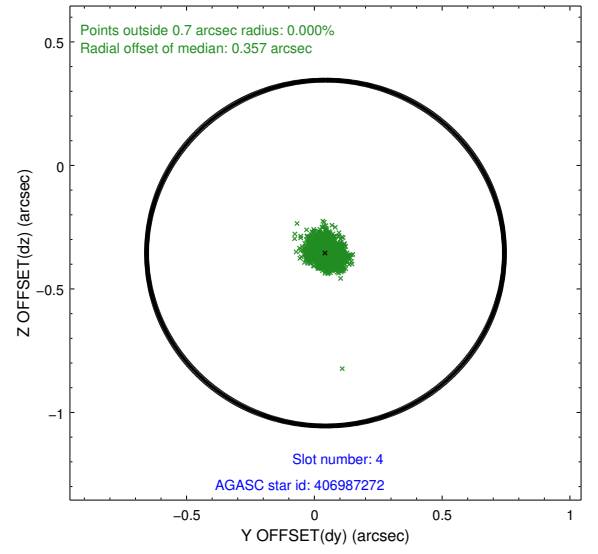
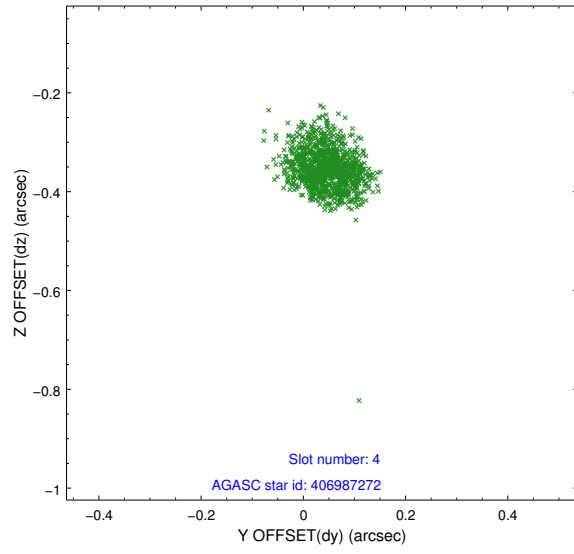
slot	status	id	mag	n_pts	med_dy	med_dz	dr1	dr2	ra	dec	mean_y	mean_z
0	FID	HRC-S-1	6.98	534	0.078	-0.125	0.007	0.012	0.000000	0.000000	-1167.01	-461.21
1	FID	HRC-S-3	6.99	534	0.031	-0.095	0.008	0.014	0.000000	0.000000	-1171.91	567.48
2	FID	HRC-S-4	6.93	534	0.279	-0.078	0.004	0.012	0.000000	0.000000	1229.28	571.87
3	GUIDE	406985120	7.40	1068	-0.034	-0.008	0.080	0.122	278.839732	38.894839	560.41	1128.49
4	GUIDE	406987272	6.94	1068	0.044	-0.355	0.060	0.092	278.536588	38.437504	-1004.45	2121.80
5	GUIDE	406987384	8.95	1067	0.295	0.028	0.082	0.134	278.815518	38.115336	-2230.31	1438.88
6	GUIDE	407513096	8.16	1067	-0.223	0.206	0.072	0.123	279.928965	39.436841	2261.19	-2055.88
7	GUIDE	407521232	8.65	1067	-0.088	0.130	0.103	0.179	279.628883	39.431715	2309.92	-1225.80

2.4 Star Slots

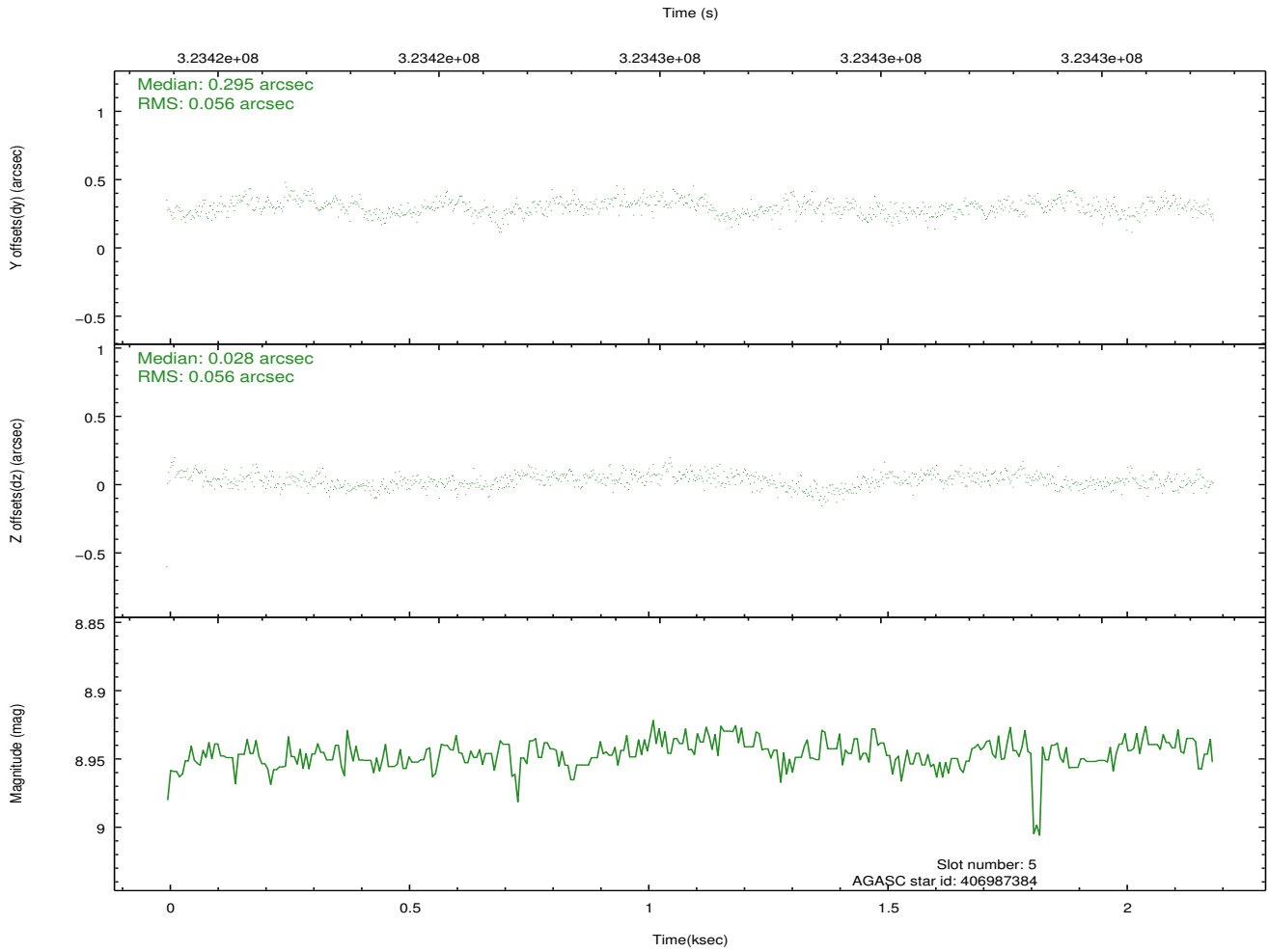
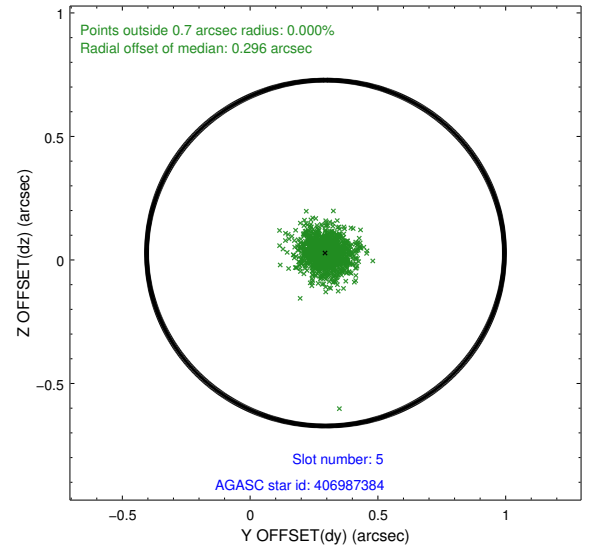
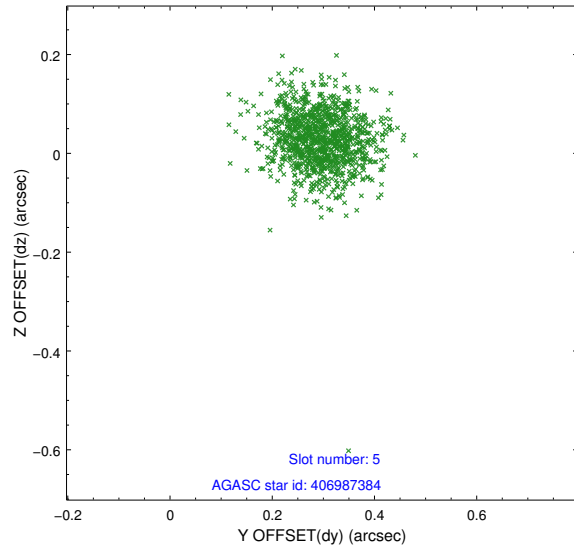
2.4.1 Slot 3



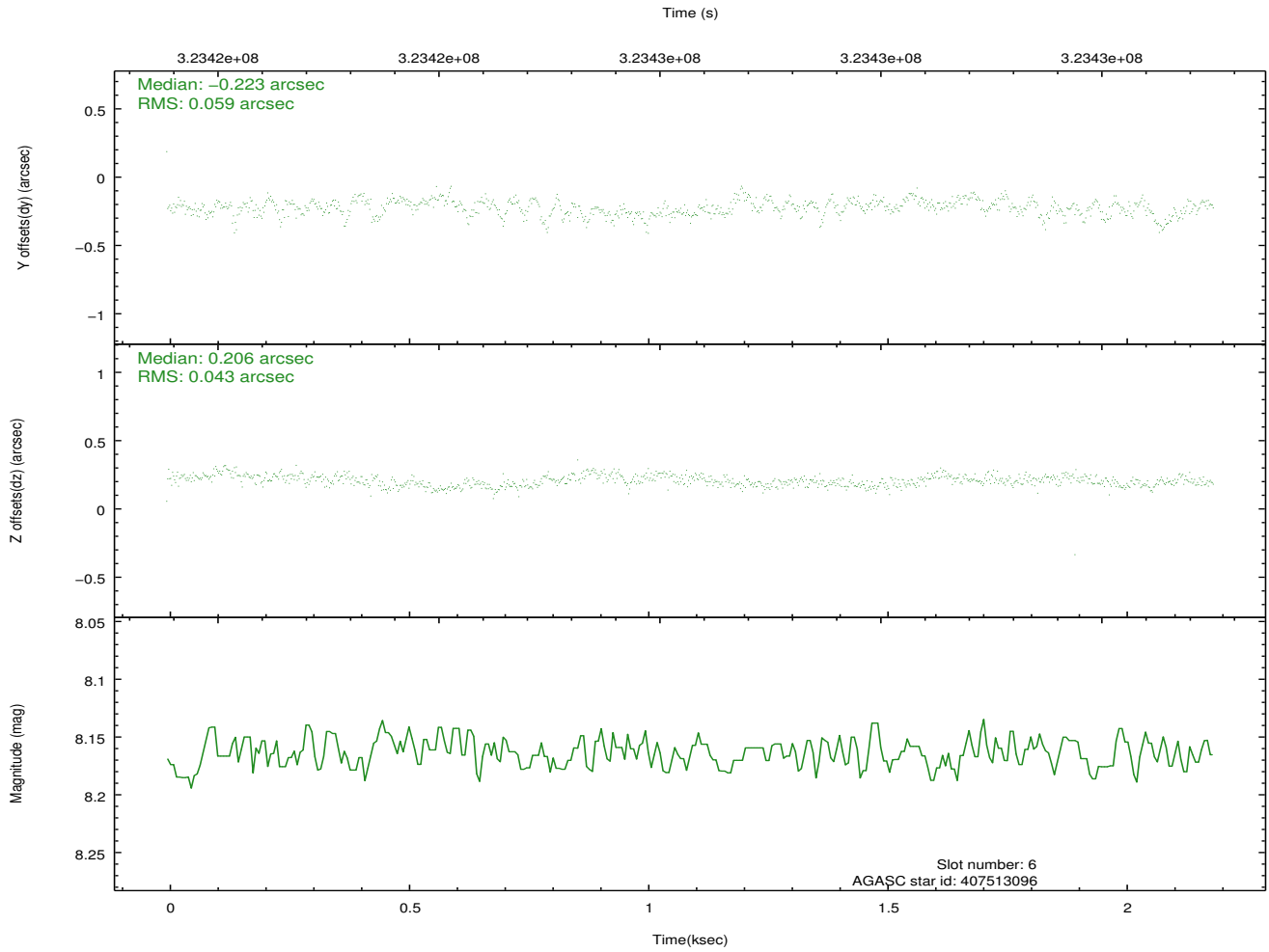
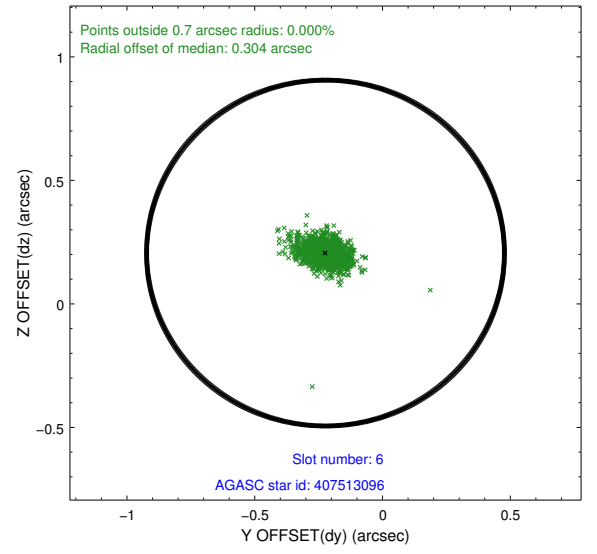
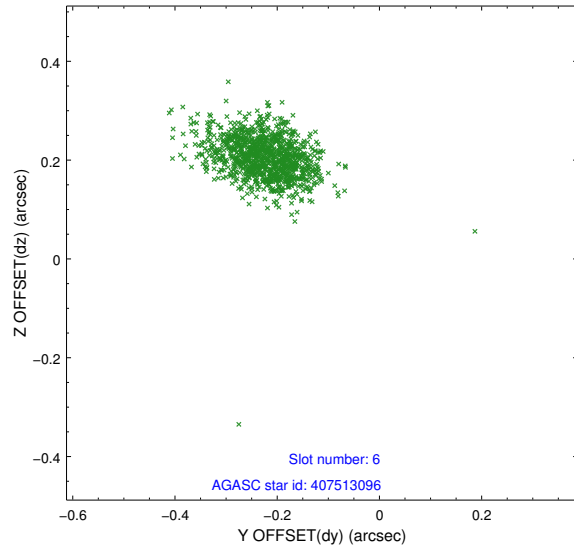
2.4.2 Slot 4



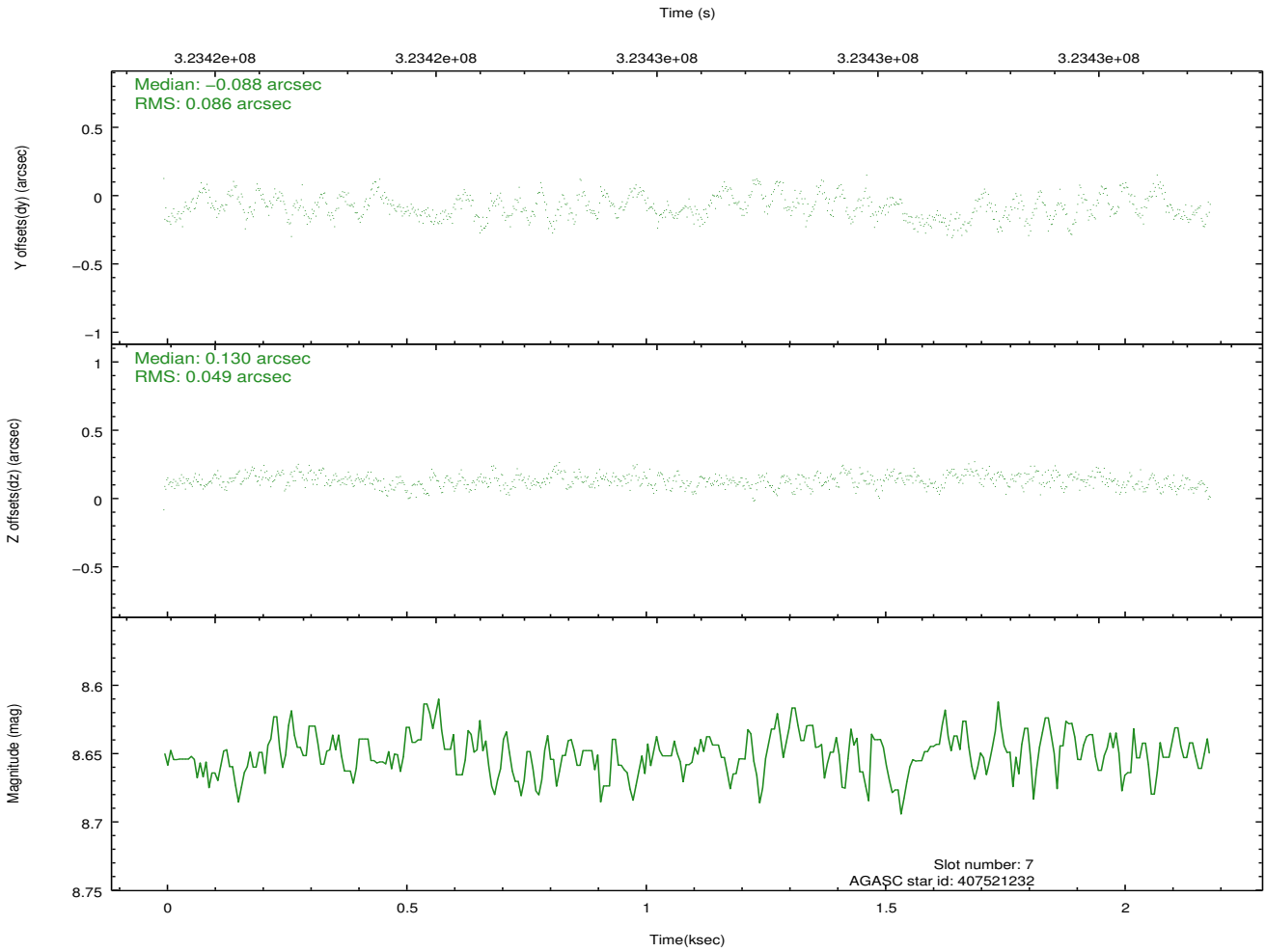
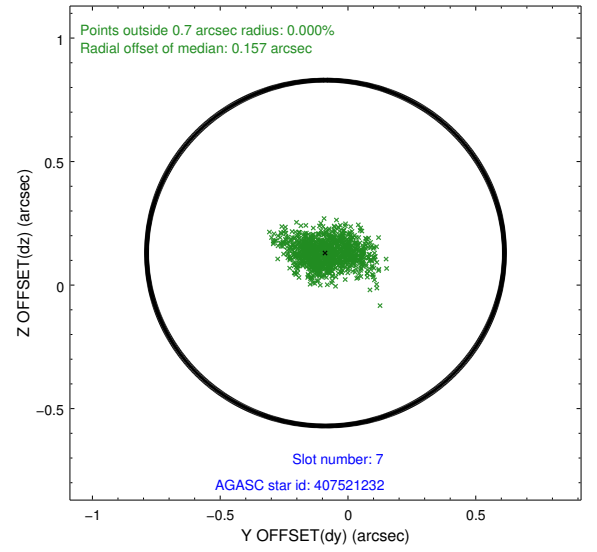
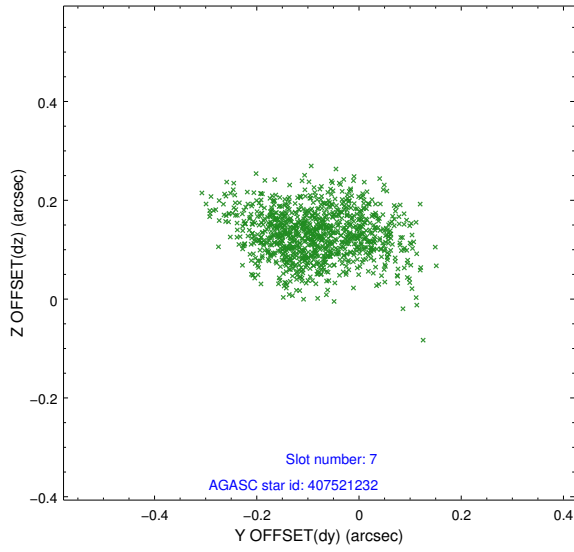
2.4.3 Slot 5



2.4.4 Slot 6

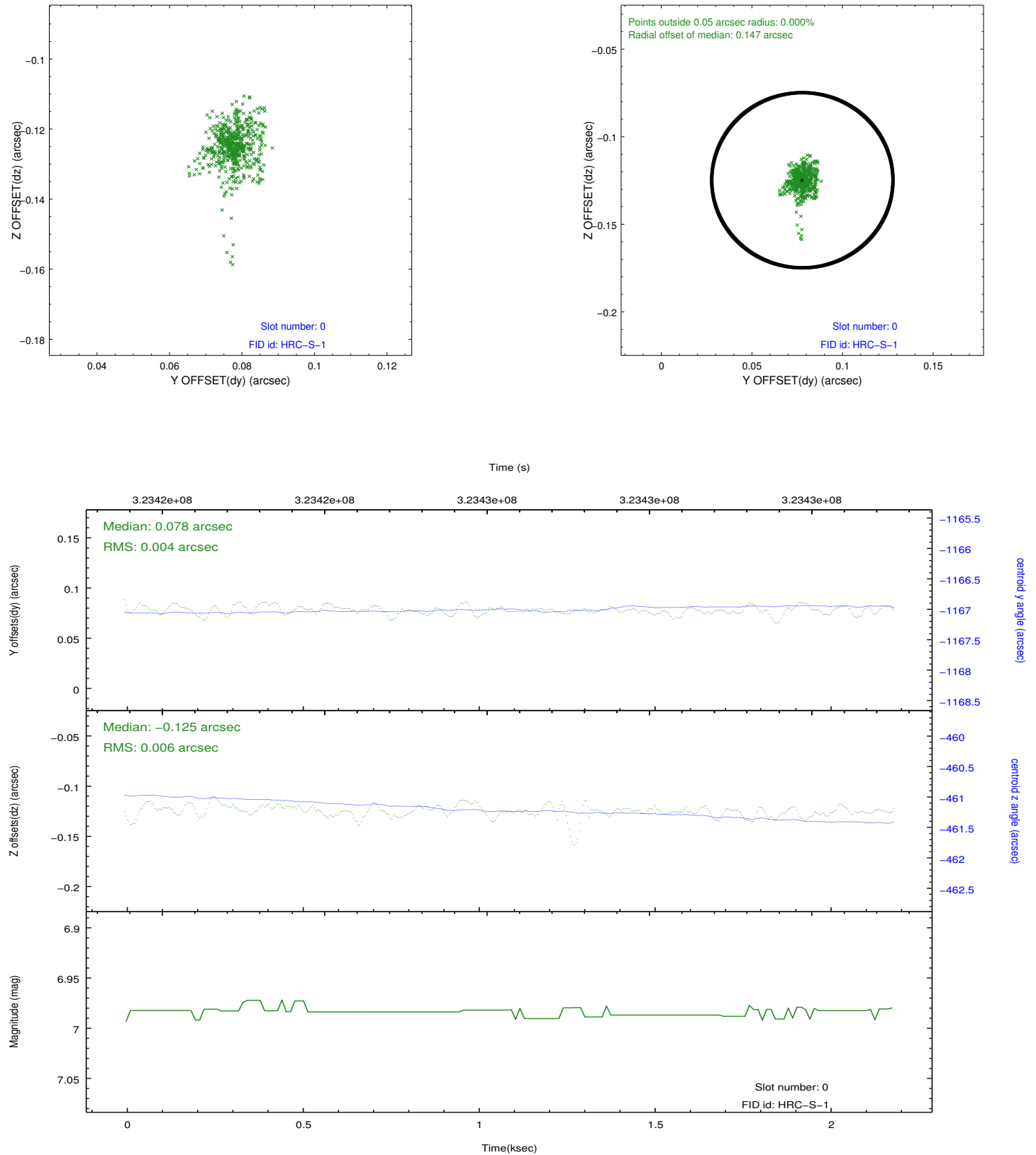


2.4.5 Slot 7

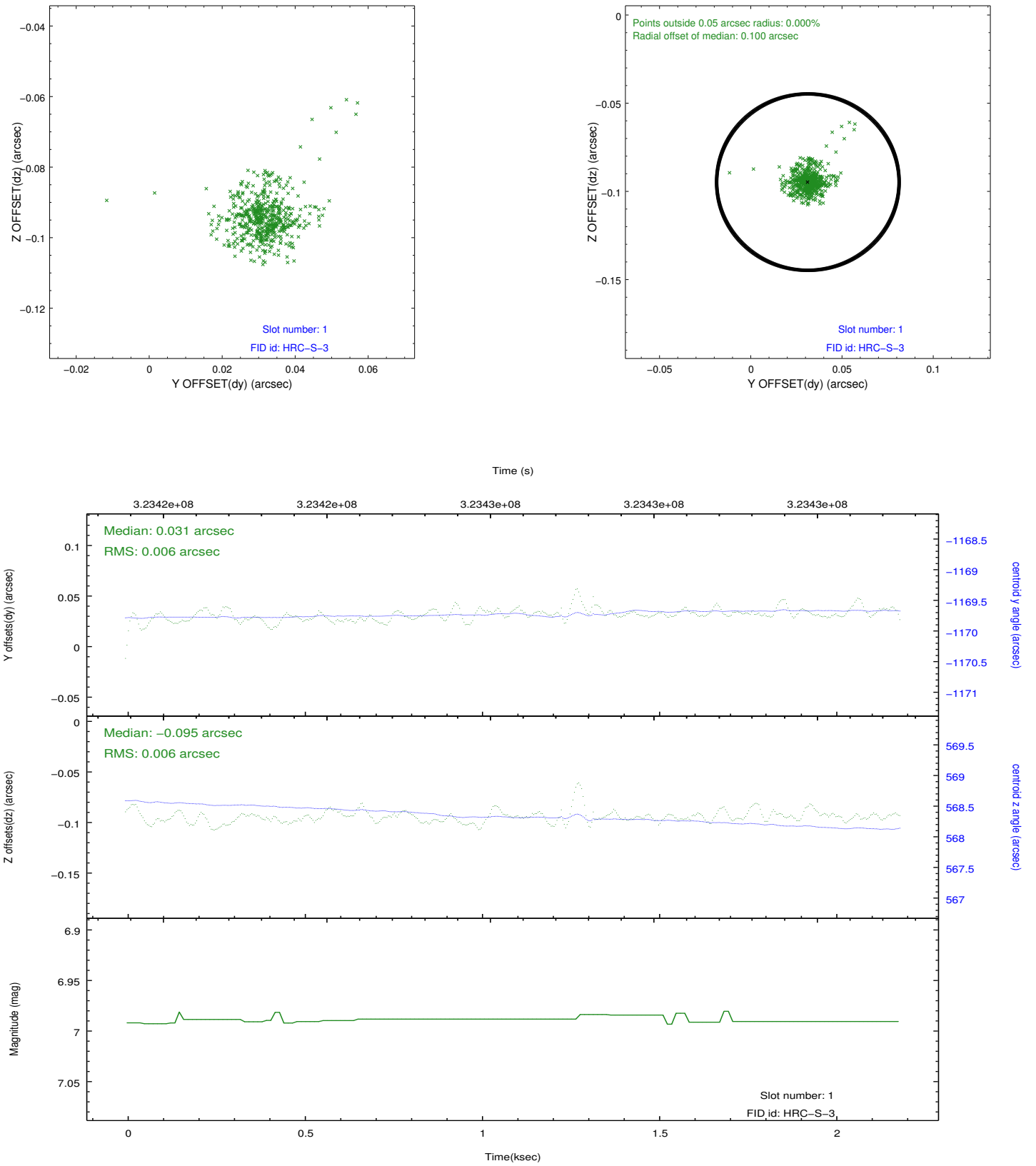


2.5 FID Slots

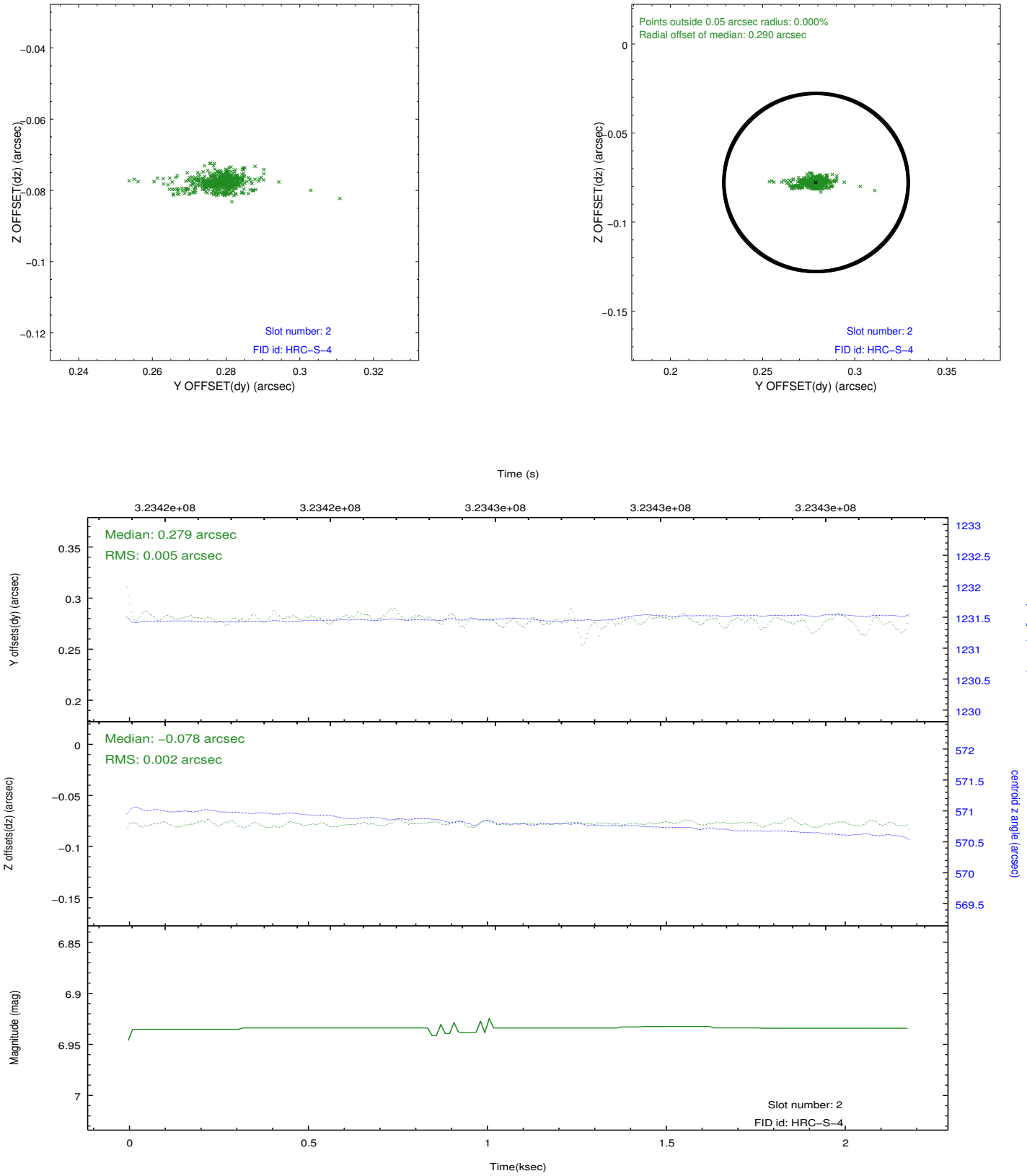
2.5.1 Slot 0



2.5.2 Slot 1



2.5.3 Slot 2



A Summary

A.1 Status

V&V Scientist	Jen Lauer
V&V Date (YYYY-MM-DD)	2012.08.16
V&V Edition	1
V&V Disposition and Status	OK
V&V Charge Time	2.15173134

A.2 Comments

Window constraint met.