

V&V Reference Report

L2 ASCDS Version : 8.4.4

Observation 9396 - L2 Version 4
Chandra X-Ray Center

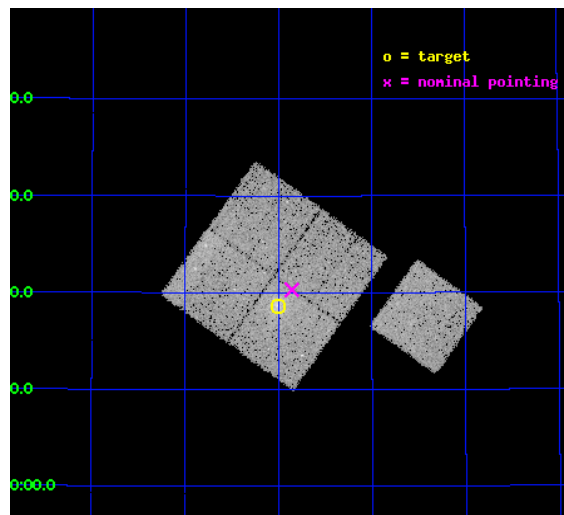
L2 Processing Date : Jun 13 2012

Contents

1	Front	2
2	OBI	3
2.1	OBI	3
2.1.1	Images	3
2.1.2	Bias	3
2.1.3	Parameters	4
2.1.4	Events	4
2.2	Compared Parameters	5
2.3	Aspect	6
2.4	Star Slots	9
2.4.1	Slot 4	9
2.4.2	Slot 5	10
2.4.3	Slot 6	11
2.5	FID Slots	12
2.5.1	Slot 0	12
2.5.2	Slot 1	13
2.5.3	Slot 2	14
A	Summary	15
A.1	Status	15
A.2	Comments	15

1 Front

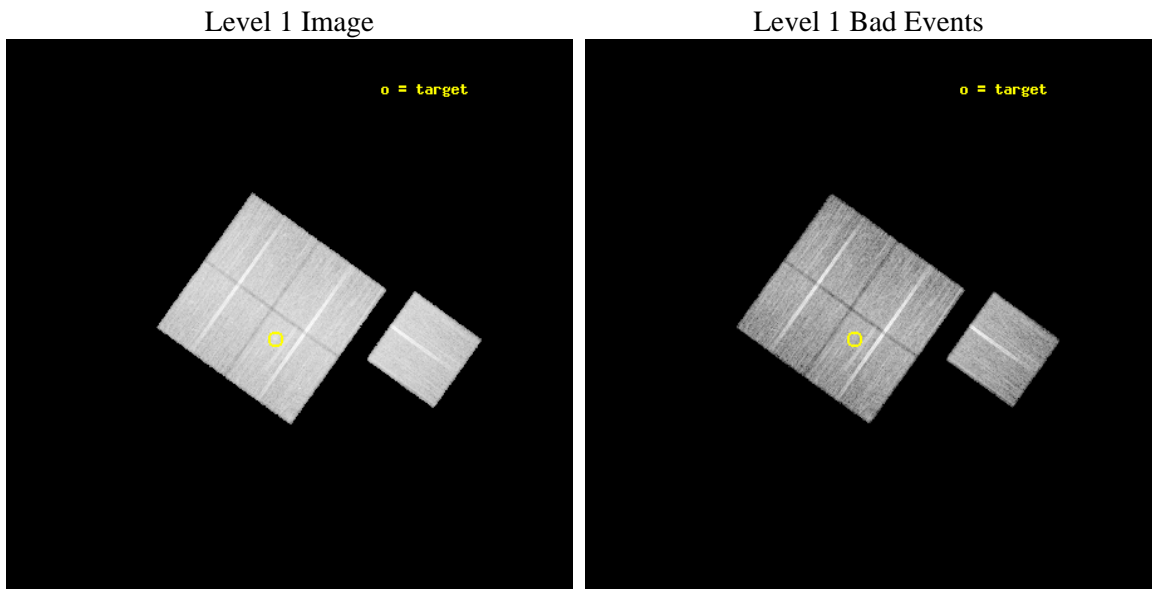
seq_num	800733	Sequence number
obs_id	9396	Observation id
title	SCALING RELATIONS FOR LOW-MASS GALAXY CLUSTERS AND GROUPS	Proposal
observer	Dr. Alexey Vikhlinin	Principal investigator
object	cl1349+4918	Source name
dtcycle	0	
cycle	P	events from which exps? Prim/Second/Both
ra_targ	207.250833	Observer's specified target RA [deg]
dec_targ	49.309167	Observer's specified target Dec [deg]
ra_nom	207.2142426558	Nominal RA [deg]
dec_nom	49.338439787041	Nominal Dec [deg]
roll_nom	125.66575874401	Nominal Roll [deg]
revision	4	Processing version of data
ontime	18593.759122789	Sum of GTIs [s]
livetime	18350.817971323	Livetime [s]
ontime0	18596.900143027	Sum of GTIs [s]
ontime1	18593.759132683	Sum of GTIs [s]
ontime2	18590.618112445	Sum of GTIs [s]
ontime3	18593.759122789	Sum of GTIs [s]
ontime6	18593.759122849	Sum of GTIs [s]
l2events	73181	Number of level 2 events



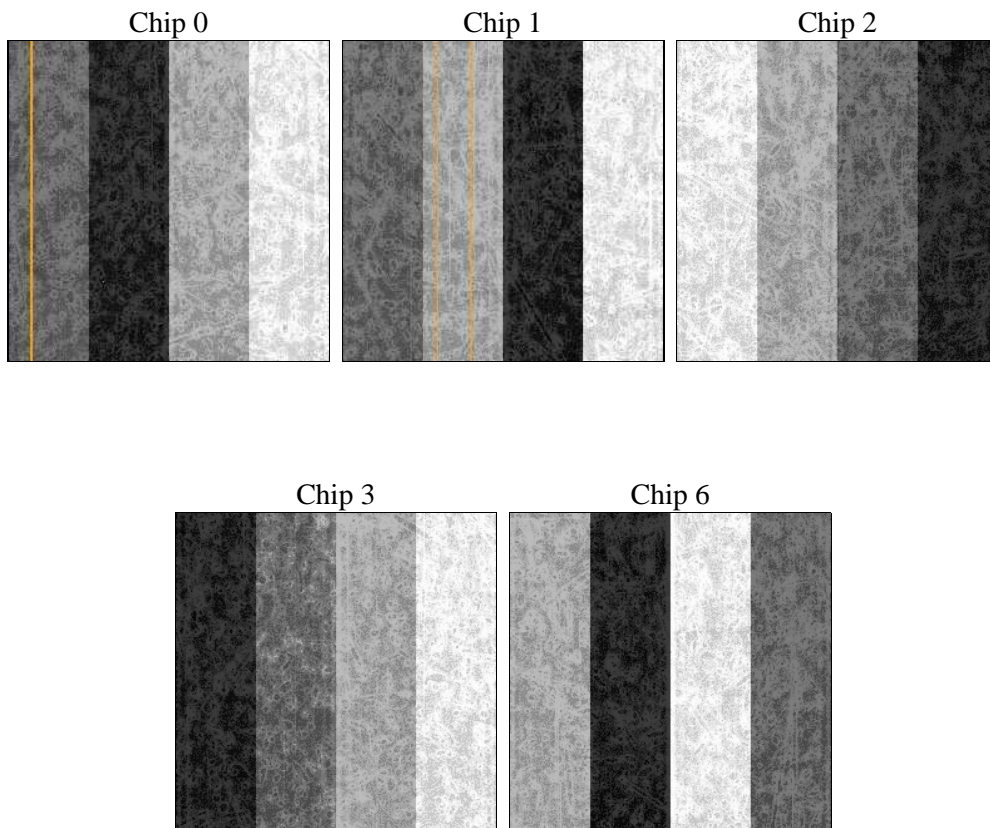
2 OBI

2.1 OBI

2.1.1 Images



2.1.2 Bias



2.1.3 Parameters

obi_num	1	Obi number	sched_exp_time	18424.872000	[s] Scheduled observation exposure time
ascdsver	8.4.5	Processing system revision	ontime	18593.759122789	Sum of GTIs [s]
caldsver	4.4.10	 	ontime0	18596.900143027	Sum of GTIs [s]
date	2012-06-13T15:59:49	Date and time of file creation	ontime1	18593.759132683	Sum of GTIs [s]
revision	4	Processing version of data	ontime2	18590.618112445	Sum of GTIs [s]
			ontime3	18593.759122789	Sum of GTIs [s]
			ontime6	18593.759122849	Sum of GTIs [s]
			l1events	802725	Number of level 1 events

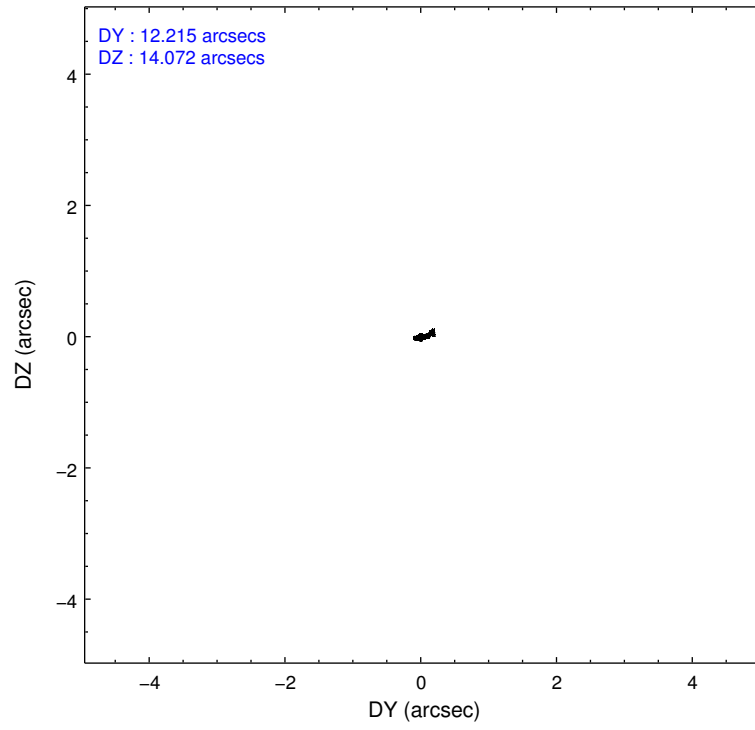
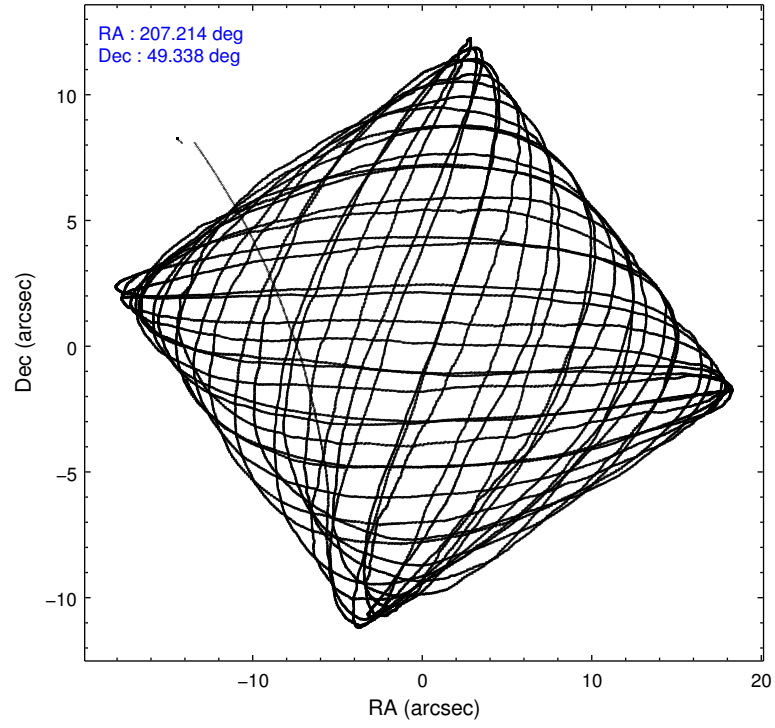
2.1.4 Events

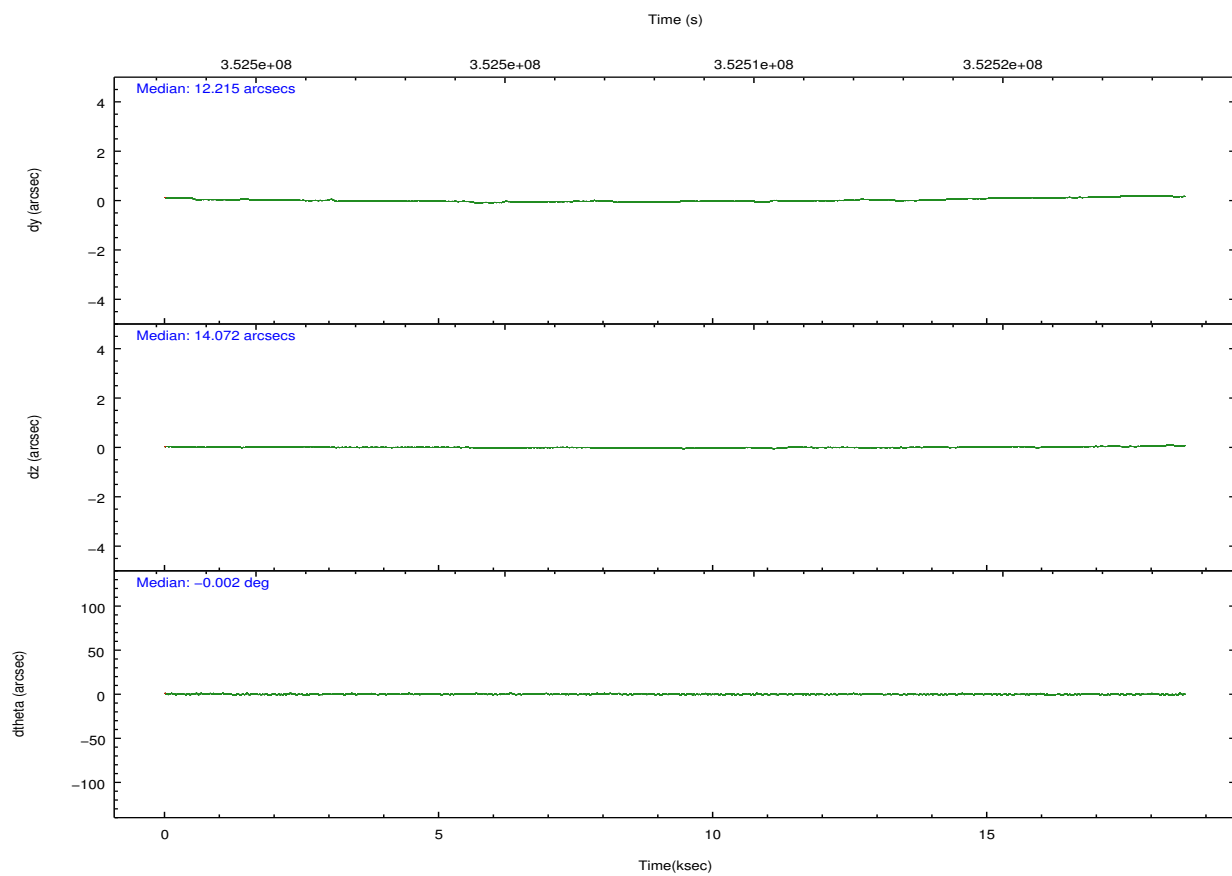
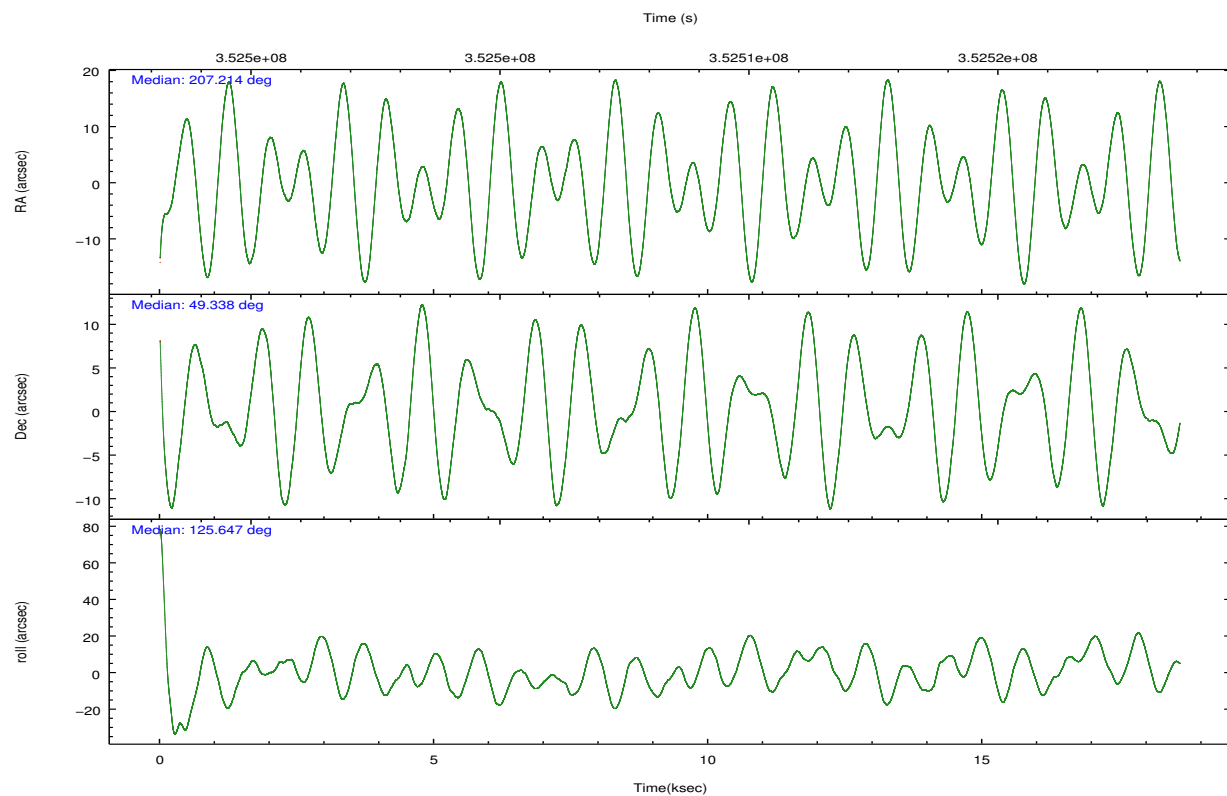
	ccd 0	ccd 1	ccd 2	ccd 3	ccd 6		ccd 0	ccd 1	ccd 2	ccd 3	ccd 6
level 1 events	151020	156460	169343	163958	161944	grade 0 events	6071	7307	6167	7892	6188
rejected events	134358	137319	152907	145877	144904		4%	4%	3%	4%	3%
rejected %	88%	87%	90%	88%	89%	grade 1 events	84	86	104	109	87
							0%	0%	0%	0%	0%
						grade 2 events	4058	4517	4021	3801	3800
							2%	2%	2%	2%	2%
						grade 3 events	1917	2042	1723	1744	1831
							1%	1%	1%	1%	1%
						grade 4 events	1757	1898	1772	1809	1803
							1%	1%	1%	1%	1%
						grade 5 events	5904	6416	5620	6767	6716
							3%	4%	3%	4%	4%
						grade 6 events	3185	3769	3070	3181	3763
							2%	2%	1%	1%	2%
						grade 7 events	128044	130425	146866	138655	137756
							84%	83%	86%	84%	85%

2.2 Compared Parameters

Parameter	Planned	Actual	Parameter	Planned	Actual
Instrument	ACIS	ACIS	Obspar format version number	7	7
Detector	ACIS-01236	ACIS-01236	Obspar file type	PREDICTED	ACTUAL
Grating	NONE	NONE	Obspar update status	NONE	UPDATED
Data mode	VFAINT	VFAINT	CCD I0 on	Y	Y
Observation mode	POINTING	POINTING	CCD I1 on	Y	Y
[deg] Pointing RA	207.252759	207.2142426557989	CCD I2 on	Y	Y
[deg] Pointing Dec	49.327231	49.33843978704108	CCD I3 on	Y	Y
[deg] Pointing Roll	125.427773	125.6657587440105	CCD S0 on	N	N
[mm] SIM focus pos	-0.782348	-0.7809083437167272	CCD S1 on	N	N
[mm] SIM defocus	0	0.001439871863259334	CCD S2 on	O1	Y
[mm] SIM translation stage pos	-228.592463	-228.5990329025337	CCD S3 on	N	N
[mm] SIM translation stage offset	-5	-4.993420100396037	CCD S4 on	N	N
[s] Observation start time (MET)	352499295.184000	352498117.2624	CCD S5 on	N	N
Observation start date	2009-03-03T20:27:09	2009-03-03T20:08:37	Number of optional ACIS chips dropped	0	0
[s] Observation end time (MET)	352517720.184000	352517954.08838	On-chip summing requested	N	N
Observation end date	2009-03-04T01:34:14	2009-03-04T01:39:14	Subarray requested	NONE	NONE
Read mode	TIMED	TIMED	Alternating exposures requested	N	N
			[s] Primary exposure time	0.000000	3.1

2.3 Aspect



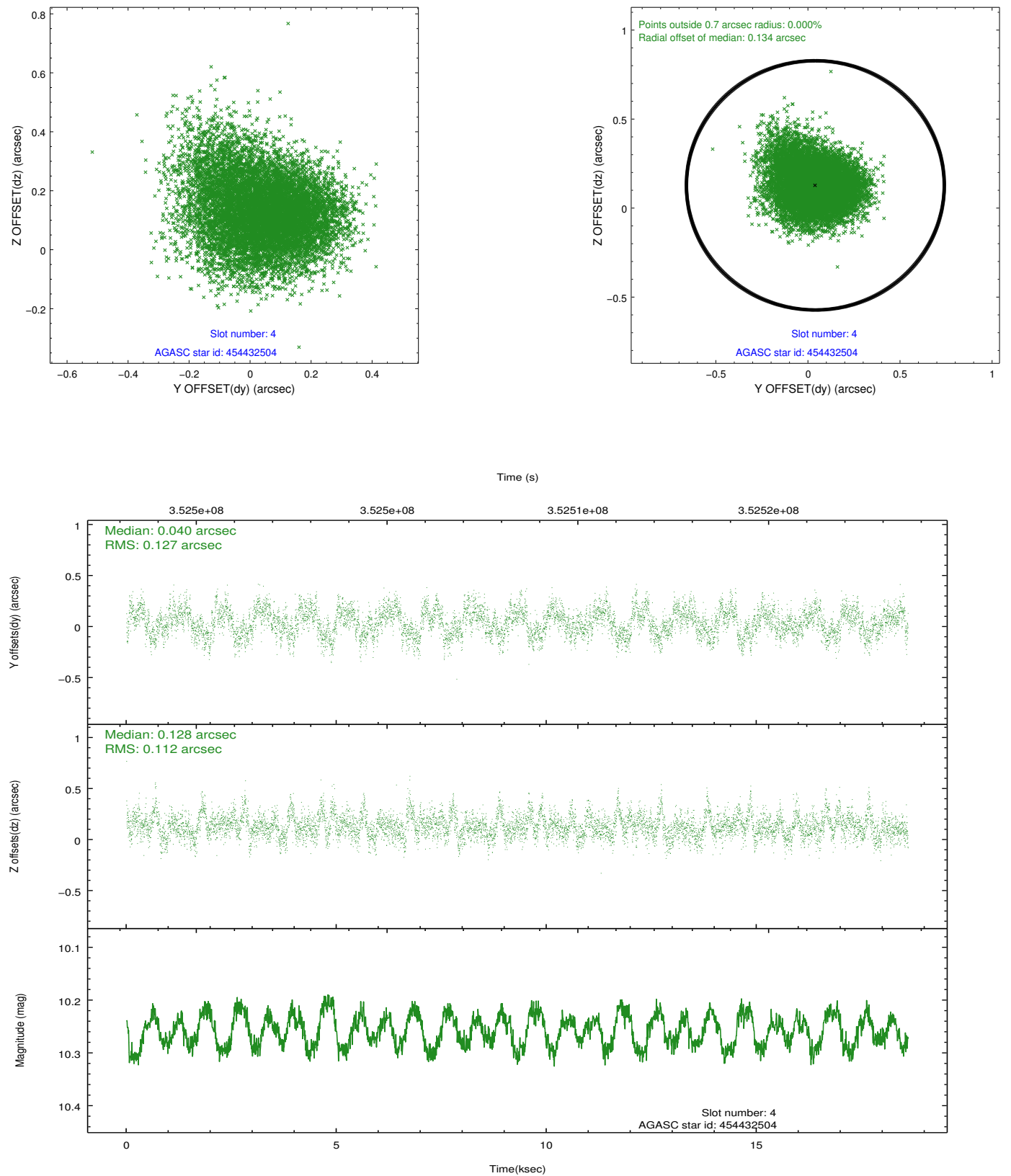


Slot Statistics

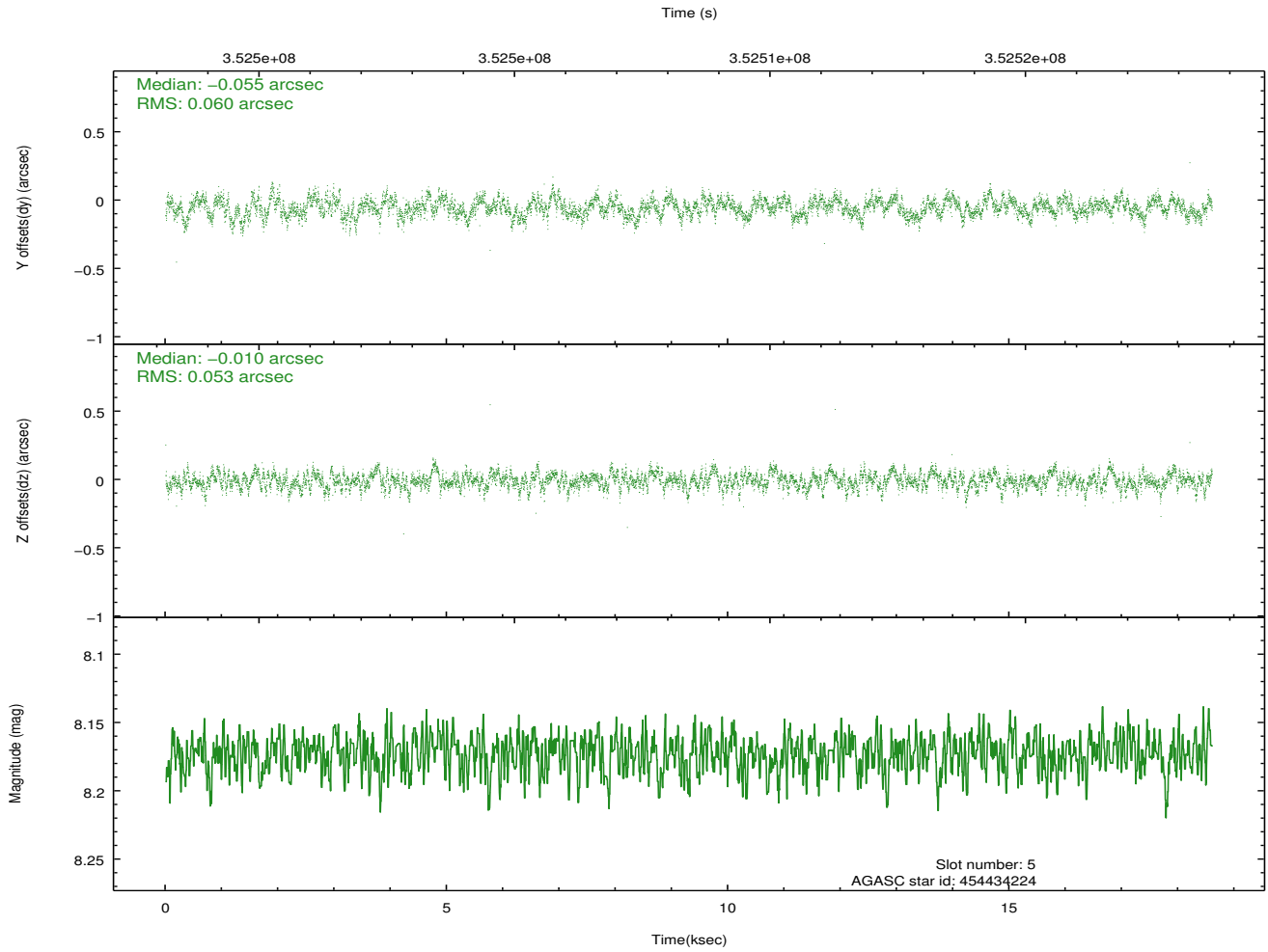
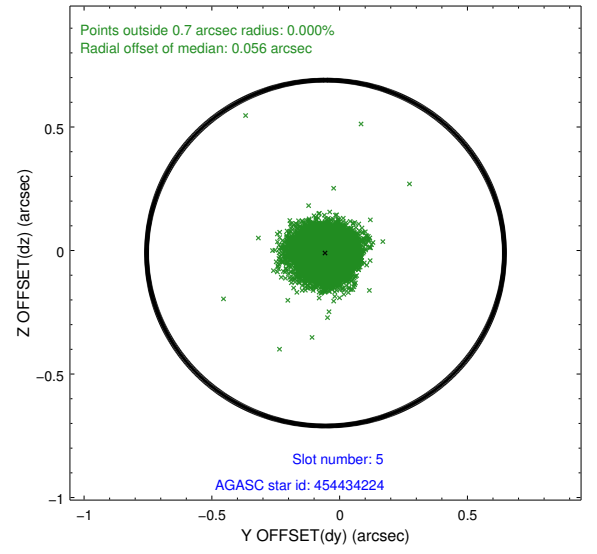
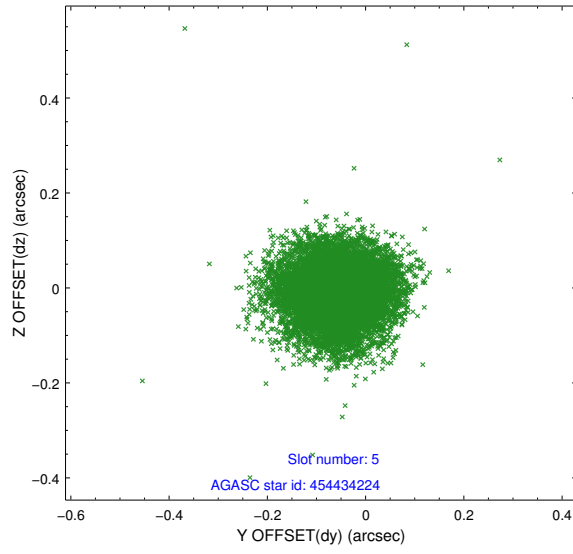
slot	status	id	mag	n_pts	med_dy	med_dz	dr1	dr2	ra	dec	mean_y	mean_z
0	FID	ACIS-I-1	7.10	4537	0.122	-0.083	0.006	0.011	0.000000	0.000000	927.32	-940.21
1	FID	ACIS-I-5	7.08	4538	-0.246	0.112	0.006	0.010	0.000000	0.000000	-1821.02	957.36
2	FID	ACIS-I-6	7.08	4537	0.032	0.041	0.007	0.011	0.000000	0.000000	392.56	1602.03
3	OMITTED		0.00	0	0.000	0.000	0.000	0.000	0.000000	0.000000	0.00	0.00
4	GUIDE	454432504	10.26	9049	0.040	0.128	0.181	0.291	208.298419	49.113843	-2039.50	-1572.85
5	GUIDE	454434224	8.17	9067	-0.055	-0.010	0.085	0.136	207.312110	49.402692	141.22	-270.69
6	GUIDE	454435816	9.82	9061	0.019	-0.117	0.135	0.229	207.191689	48.578705	-2111.68	1679.76
7	OMITTED		0.00	0	0.000	0.000	0.000	0.000	0.000000	0.000000	0.00	0.00

2.4 Star Slots

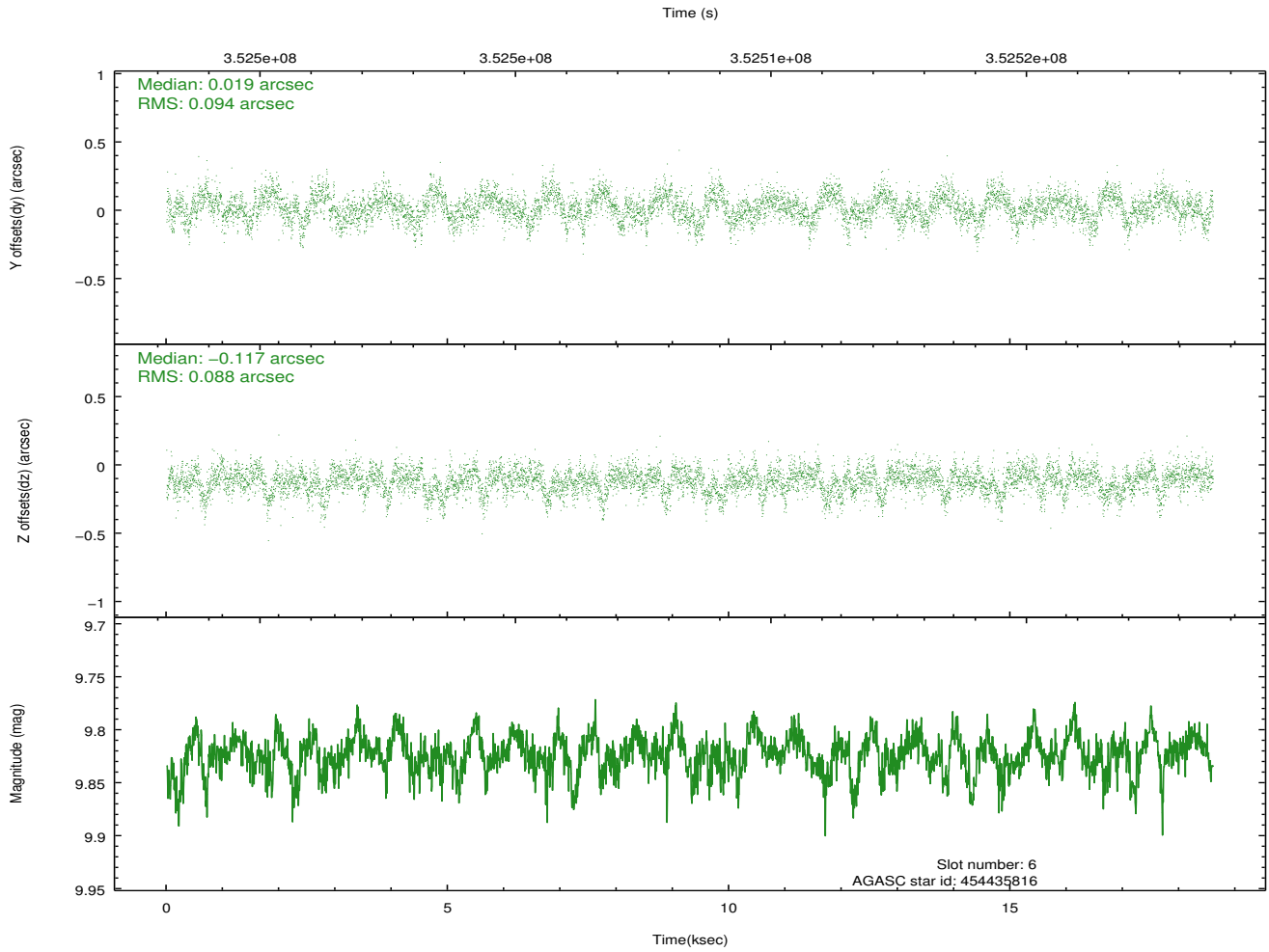
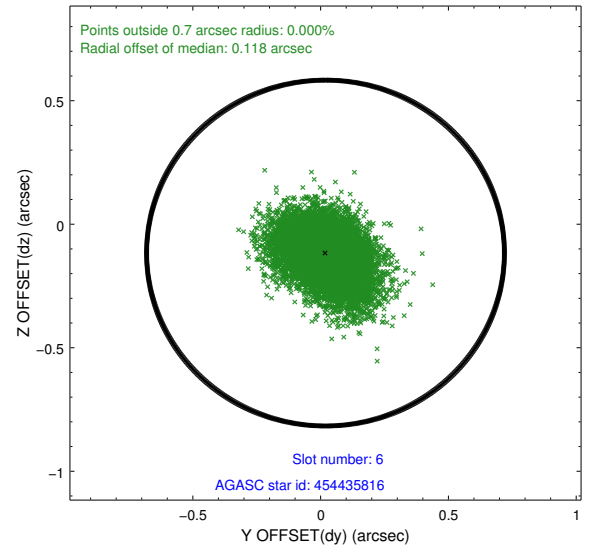
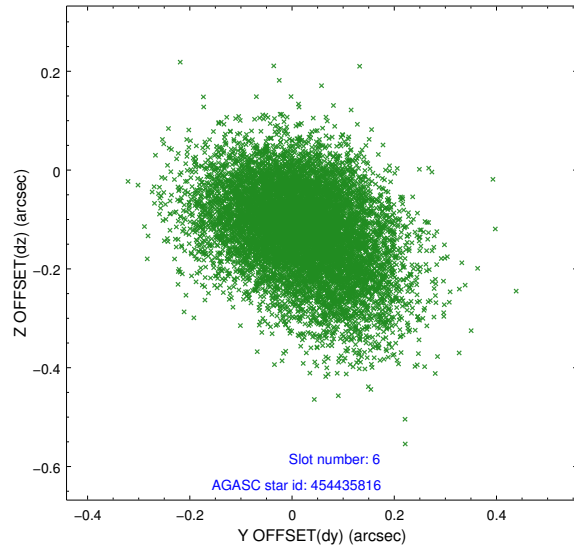
2.4.1 Slot 4



2.4.2 Slot 5

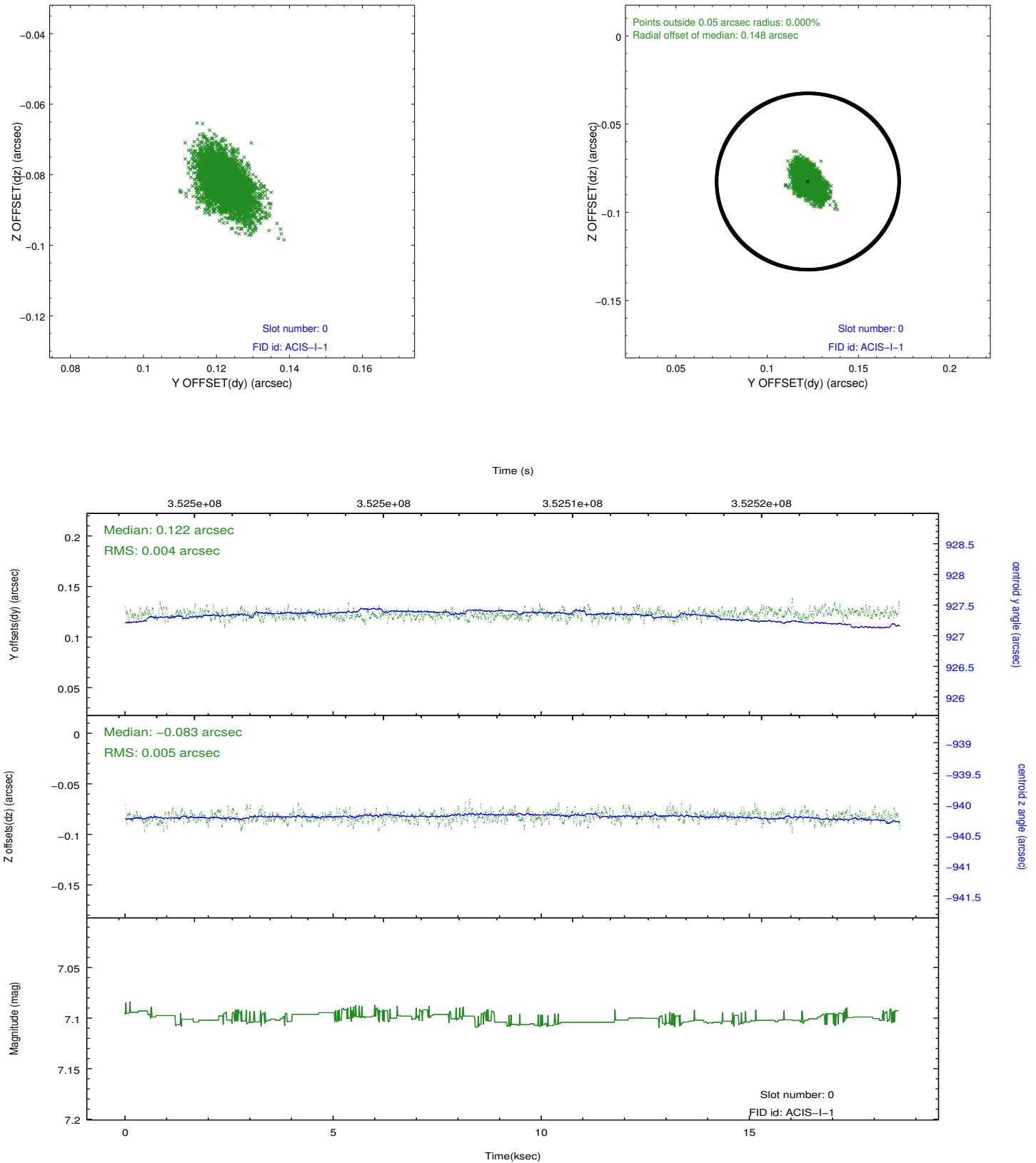


2.4.3 Slot 6

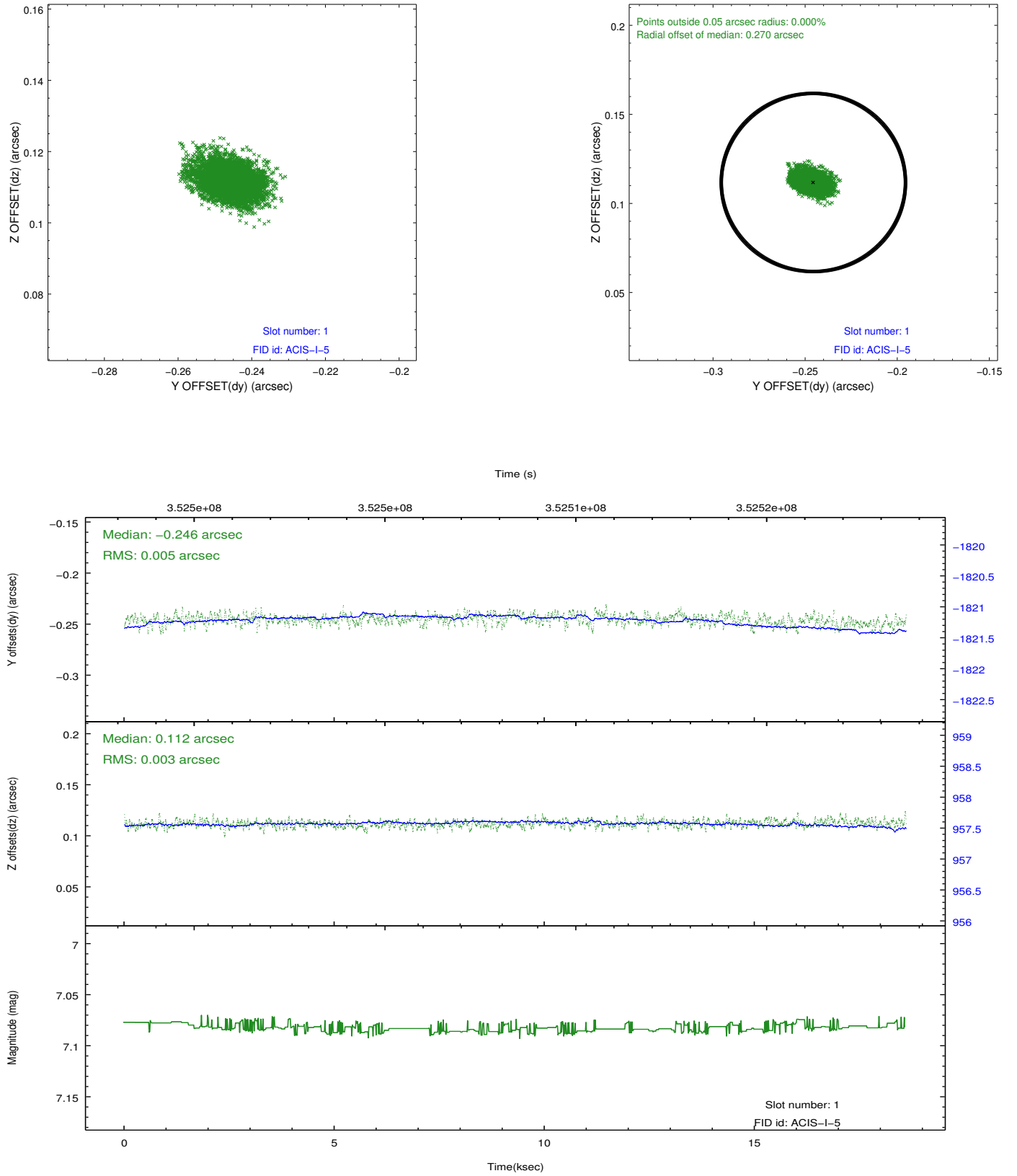


2.5 FID Slots

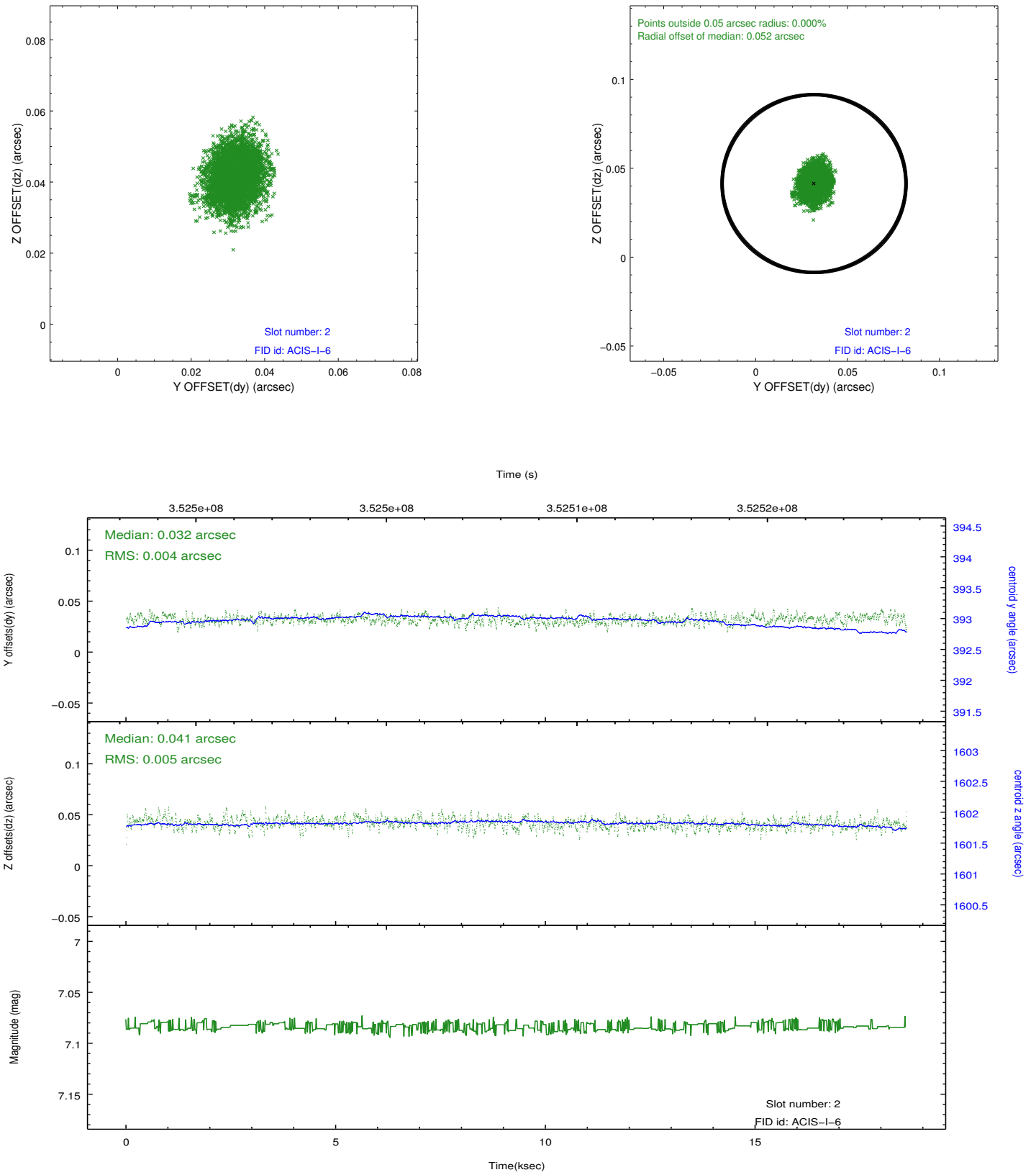
2.5.1 Slot 0



2.5.2 Slot 1



2.5.3 Slot 2



A Summary

A.1 Status

V&V Scientist	Jen Lauer
V&V Date (YYYY-MM-DD)	2012.06.18
V&V Edition	1
V&V Disposition and Status	OK
V&V Charge Time	18.5937591

A.2 Comments

The guide stars in slots 3 and 7 were removed from the aspect solution due to poor data quality. The aspect solution is improved by the removal of these guide stars from the solution.