

V&V Reference Report

L2 ASCDS Version : 8.4.4

Observation 8256 - L2 Version 2
Chandra X-Ray Center

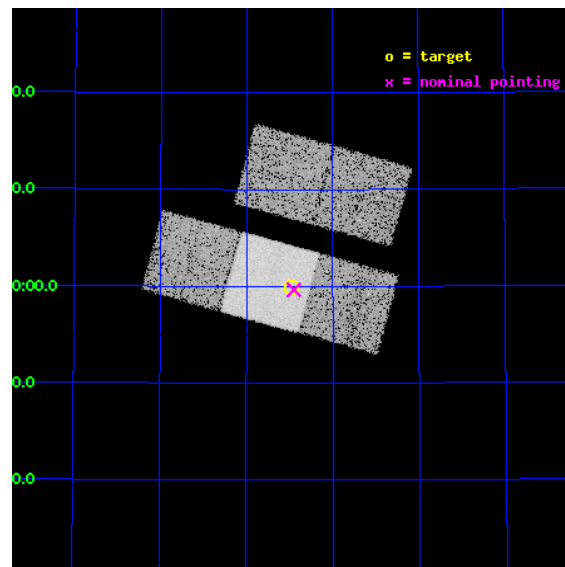
L2 Processing Date : Apr 25 2012

Contents

1	Front	2
2	OBI	3
2.1	OBI	3
2.1.1	Images	3
2.1.2	Bias	3
2.1.3	Parameters	4
2.1.4	Events	4
2.2	Compared Parameters	5
2.3	Aspect	6
2.4	Star Slots	9
2.4.1	Slot 3	9
2.4.2	Slot 4	10
2.4.3	Slot 5	11
2.4.4	Slot 6	12
2.4.5	Slot 7	13
2.5	FID Slots	14
2.5.1	Slot 0	14
2.5.2	Slot 1	15
2.5.3	Slot 2	16
A	Summary	17
A.1	Status	17
A.2	Comments	17

1 Front

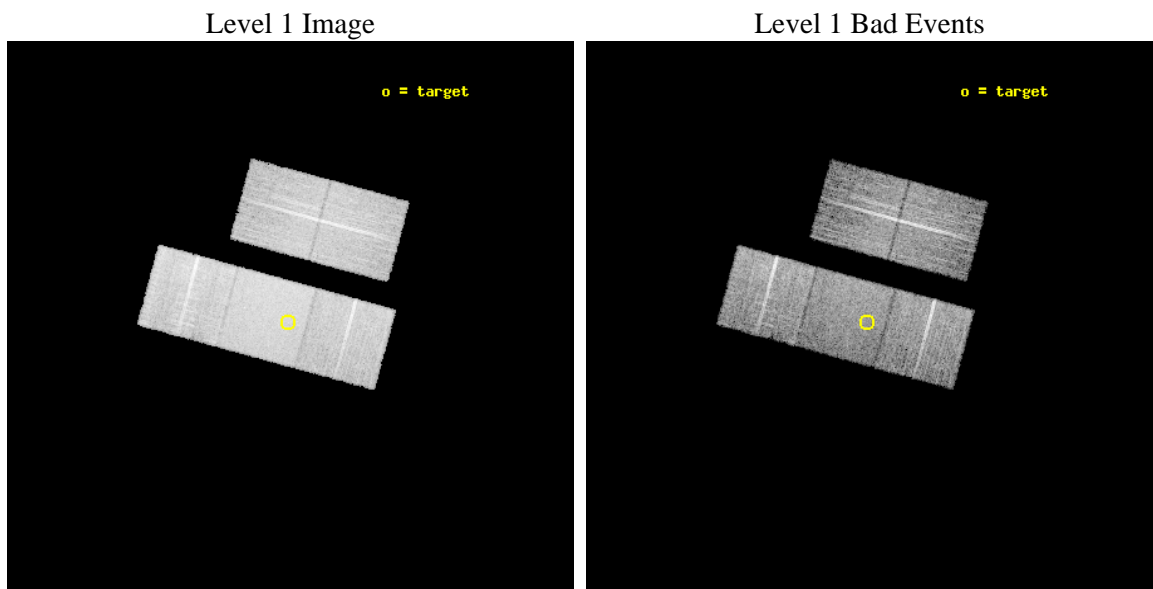
seq_num	701571	Sequence number
obs_id	8256	Observation id
title	A snapshot X-ray/radio survey of AGNs selected from the long menu of SDSS galaxies	Proposal title
observer	Dr. Sebastian Heinz	Principal investigator
object	2MASX J154228+525950	Source name
dtcycle	0	
cycle	P	events from which exps? Prim/Second/Both
ra_targ	235.618083	Observer's specified target RA [deg]
dec_targ	52.9975	Observer's specified target Dec [deg]
ra_nom	235.61262968183	Nominal RA [deg]
dec_nom	52.993961802056	Nominal Dec [deg]
roll_nom	195.24210366879	Nominal Roll [deg]
revision	2	Processing version of data
ontime	9030.3000694513	Sum of GTIs [s]
livetime	8912.3125510338	Livetime [s]
ontime2	9027.1590792537	Sum of GTIs [s]
ontime3	9027.1590791941	Sum of GTIs [s]
ontime6	9027.1590792537	Sum of GTIs [s]
ontime7	9030.3000694513	Sum of GTIs [s]
ontime8	9030.3000694513	Sum of GTIs [s]
l2events	84542	Number of level 2 events



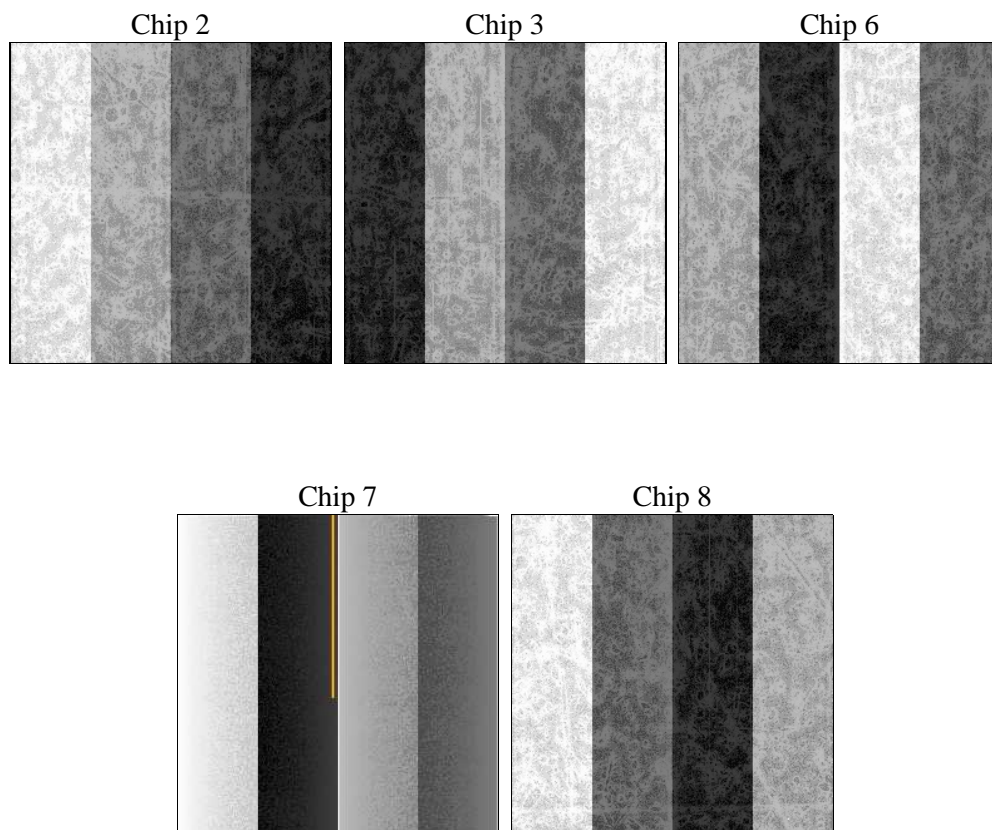
2 OBI

2.1 OBI

2.1.1 Images



2.1.2 Bias



2.1.3 Parameters

obi_num	0	Obi number	sched_exp_time	9000.000000	[s] Scheduled observation exposure time
ascdsver	8.4.4	Processing system revision	ontime	9030.3000694513	Sum of GTIs [s]
caldsver	4.4.9	 	ontime2	9027.1590792537	Sum of GTIs [s]
date	2012-04-25T20:24:24	Date and time of file creation	ontime3	9027.1590791941	Sum of GTIs [s]
revision	2	Processing version of data	ontime6	9027.1590792537	Sum of GTIs [s]
			ontime7	9030.3000694513	Sum of GTIs [s]
			ontime8	9030.3000694513	Sum of GTIs [s]
			l1events	487144	Number of level 1 events

2.1.4 Events

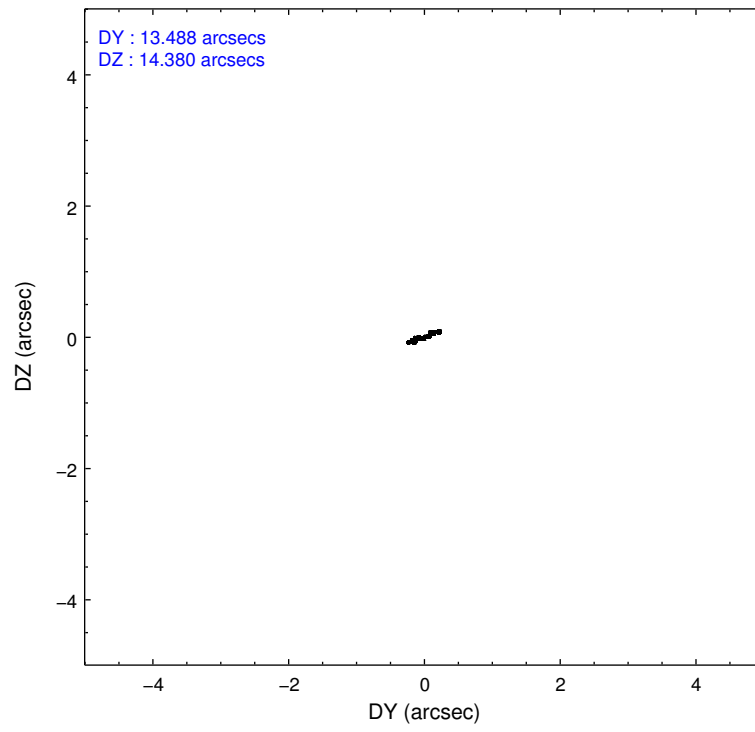
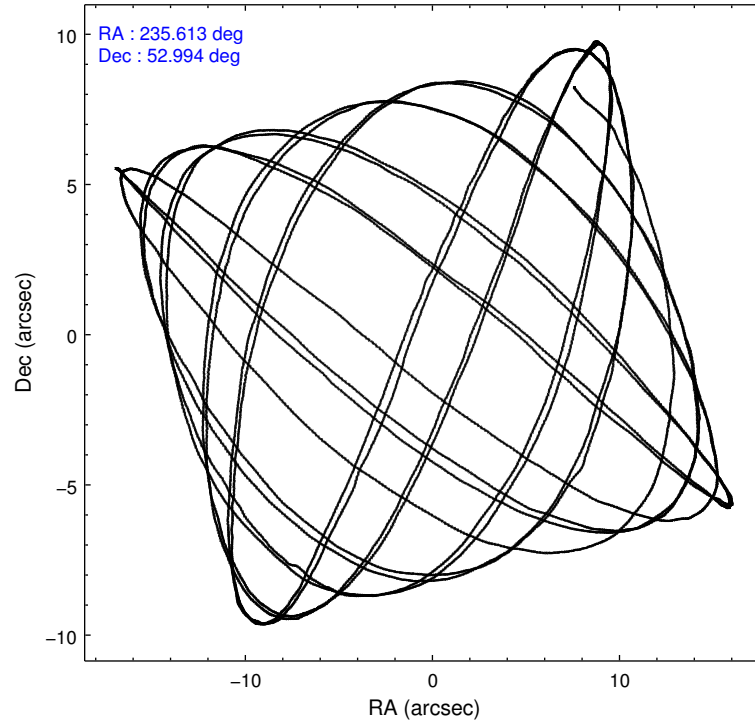
	ccd 2	ccd 3	ccd 6	ccd 7	ccd 8
level 1 events	85466	82983	87888	118721	112086
rejected events	75314	72962	77527	69852	87508
rejected %	88%	87%	88%	58%	78%

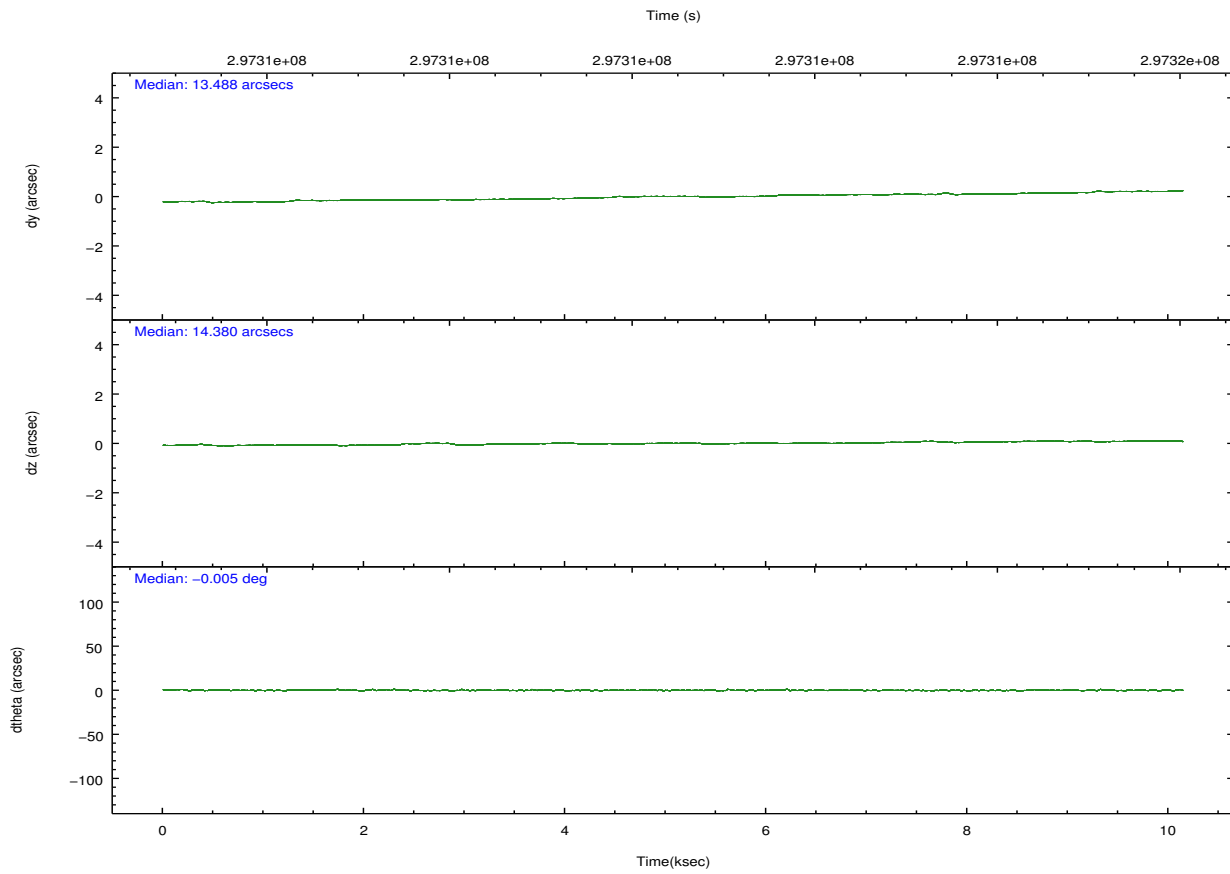
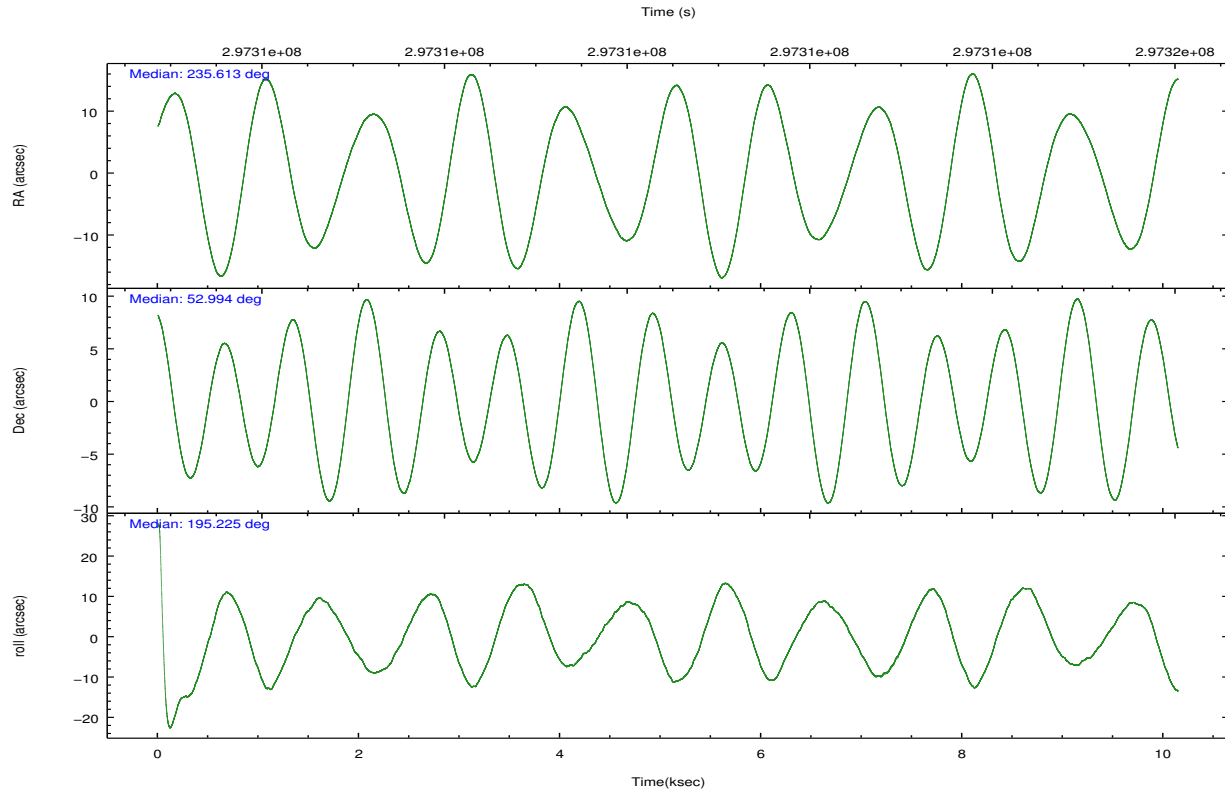
	ccd 2	ccd 3	ccd 6	ccd 7	ccd 8
grade 0 events	4478	4307	3962	4131	7456
	5%	5%	4%	3%	6%
grade 1 events	57	46	60	126	77
	0%	0%	0%	0%	0%
grade 2 events	2089	1979	2264	9839	5602
	2%	2%	2%	8%	4%
grade 3 events	1018	941	1001	4185	2619
	1%	1%	1%	3%	2%
grade 4 events	930	999	1019	4013	2426
	1%	1%	1%	3%	2%
grade 5 events	3329	3913	4009	11010	5385
	3%	4%	4%	9%	4%
grade 6 events	1648	1809	2126	26747	6514
	1%	2%	2%	22%	5%
grade 7 events	71917	68989	73447	58670	82007
	84%	83%	83%	49%	73%

2.2 Compared Parameters

Parameter	Planned	Actual	Parameter	Planned	Actual
Instrument	ACIS	ACIS	Obspar format version number	7	7
Detector	ACIS-23678	ACIS-23678	Obspar file type	PREDICTED	ACTUAL
Grating	NONE	NONE	Obspar update status	NONE	UPDATED
Data mode	VFAINT	VFAINT	CCD I0 on	N	N
Observation mode	POINTING	POINTING	CCD I1 on	N	N
[deg] Pointing RA	235.644140	235.6126296818341	CCD I2 on	O1	Y
[deg] Pointing Dec	53.013632	52.99396180205613	CCD I3 on	O2	Y
[deg] Pointing Roll	195.060301	195.2421036687929	CCD S0 on	N	N
[mm] SIM focus pos	-0.684267	-0.6828225247311905	CCD S1 on	N	N
[mm] SIM defocus	0	0.001444936568705701	CCD S2 on	O4	Y
[mm] SIM translation stage pos	-190.132523	-190.1400660498719	CCD S3 on	Y	Y
[mm] SIM translation stage offset	0	0.00754346686406393	CCD S4 on	O3	Y
[s] Observation start time (MET)	297306526.184000	297305117.63836	CCD S5 on	N	N
Observation start date	2007-06-04T01:07:41	2007-06-04T00:45:17	Number of optional ACIS chips dropped	0	0
[s] Observation end time (MET)	297315526.184000	297316456.1889	On-chip summing requested	N	N
Observation end date	2007-06-04T03:37:41	2007-06-04T03:54:16	Subarray requested	NONE	NONE
Read mode	TIMED	TIMED	Alternating exposures requested	N	N
			[s] Primary exposure time	0.000000	3.1

2.3 Aspect



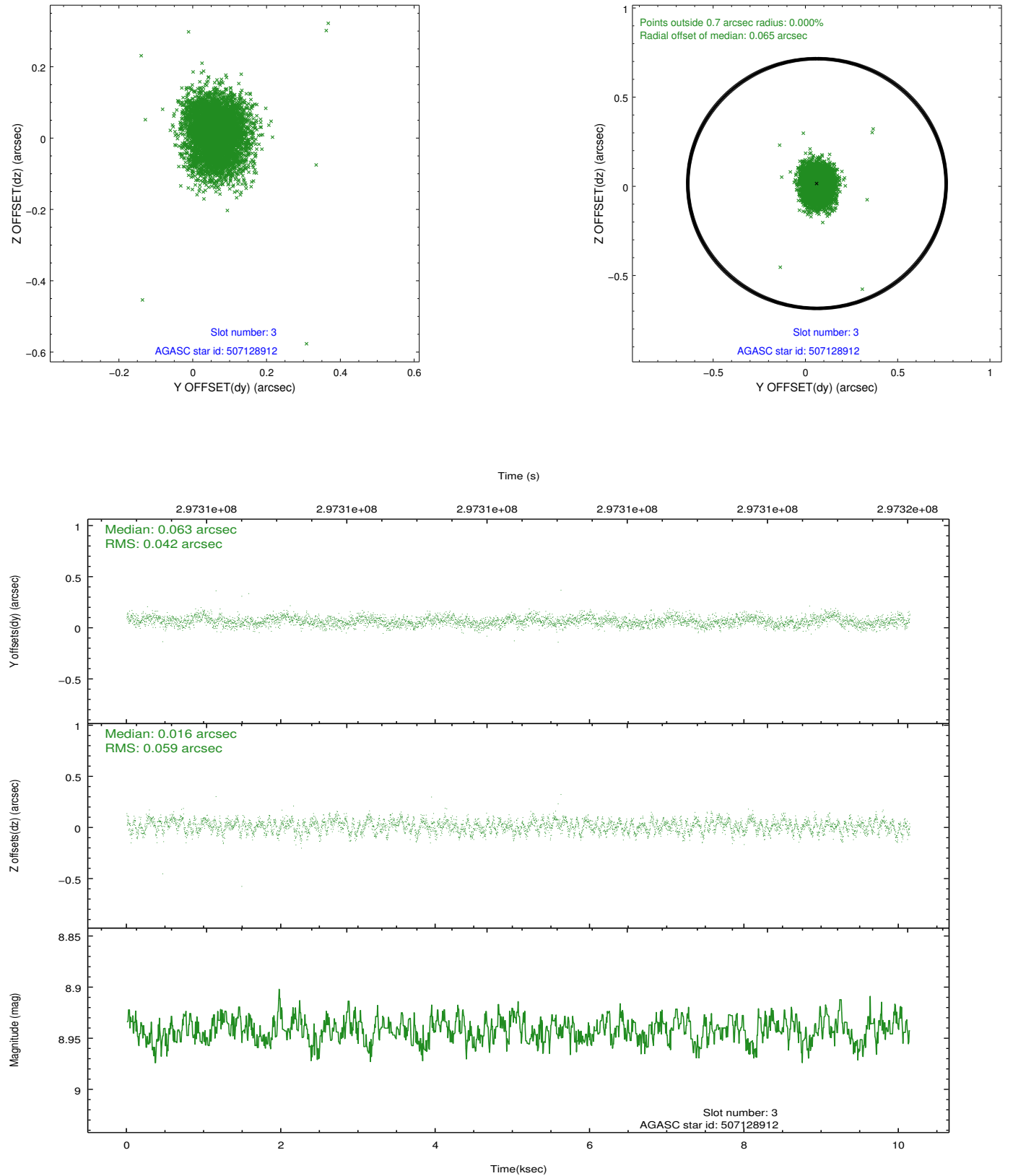


Slot Statistics

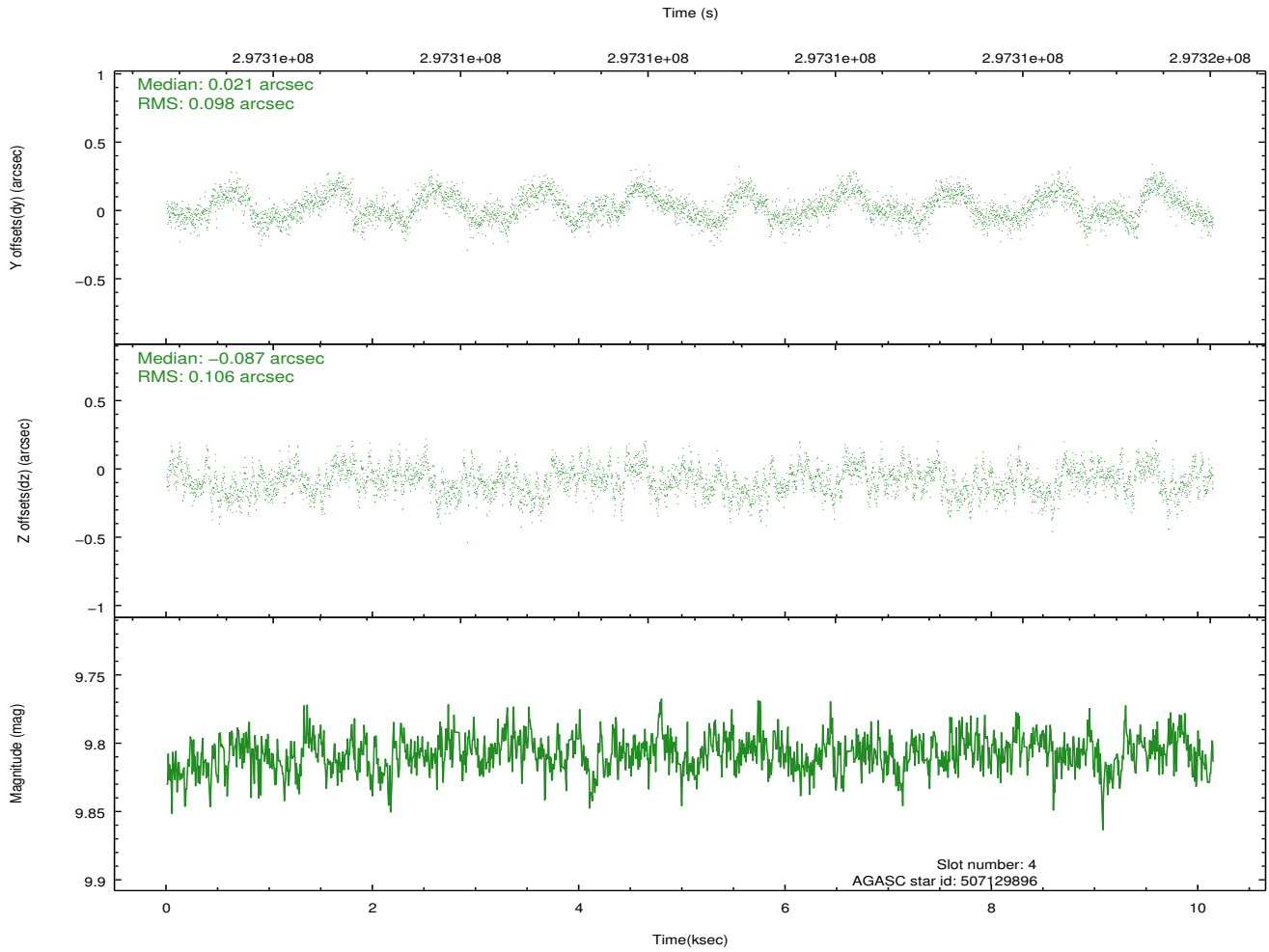
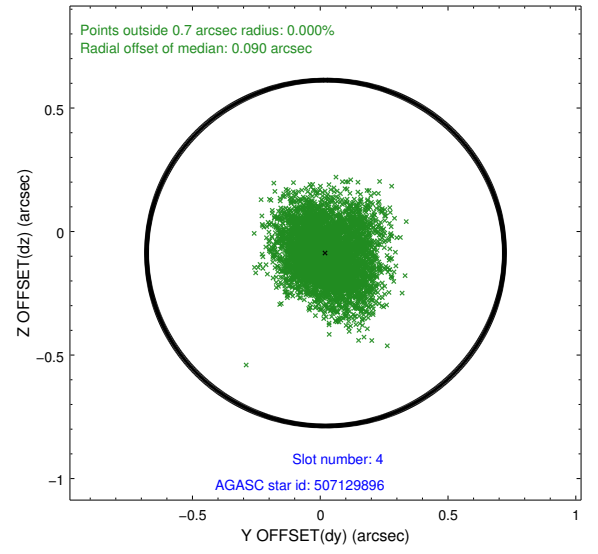
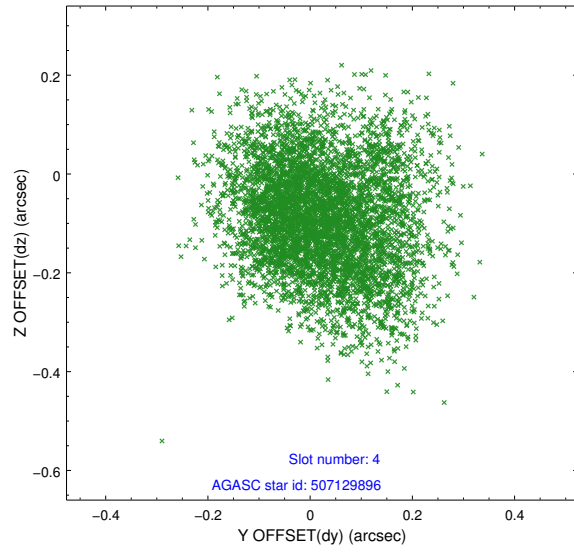
slot	status	id	mag	n_pts	med_dy	med_dz	dr1	dr2	ra	dec	mean_y	mean_z
0	FID	ACIS-S-2	7.09	2474	-0.057	-0.055	0.008	0.013	0.000000	0.000000	-766.44	-1735.81
1	FID	ACIS-S-4	7.19	2474	0.203	0.042	0.011	0.018	0.000000	0.000000	2146.84	172.26
2	FID	ACIS-S-5	7.22	2474	-0.177	0.022	0.008	0.012	0.000000	0.000000	-1818.75	166.47
3	GUIDE	507128912	8.94	4944	0.063	0.016	0.077	0.123	235.548340	53.388005	-150.87	-1354.69
4	GUIDE	507129896	9.81	4940	0.021	-0.087	0.155	0.247	235.153201	53.537020	524.68	-2095.73
5	GUIDE	507258880	7.47	4949	-0.083	-0.046	0.067	0.104	236.090173	52.983570	-904.30	351.54
6	GUIDE	507261296	7.45	4949	-0.053	0.033	0.059	0.093	236.023999	52.905433	-695.65	588.17
7	GUIDE	507263840	7.75	4948	0.045	0.090	0.065	0.099	236.326216	52.677119	-1124.96	1550.06

2.4 Star Slots

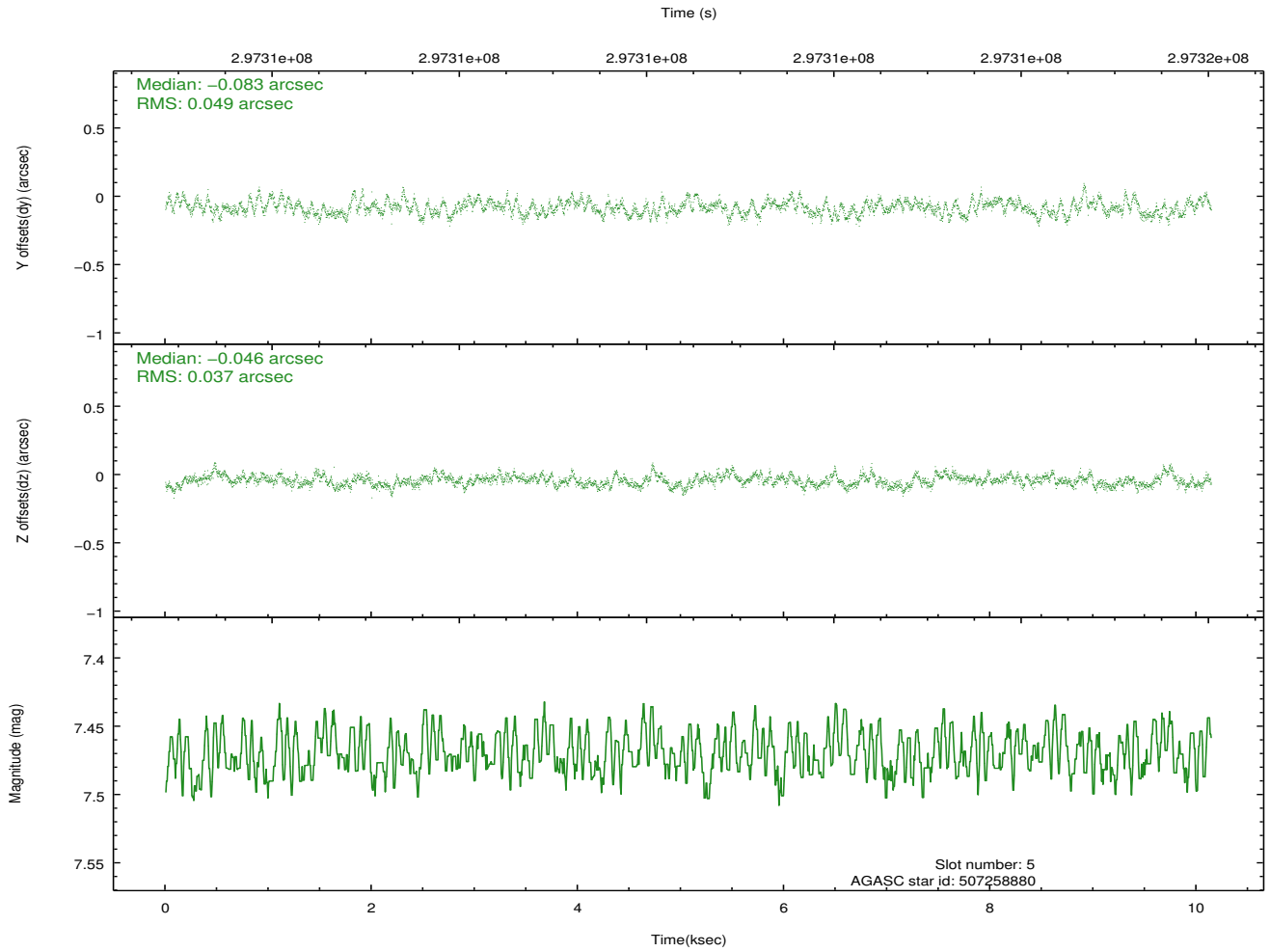
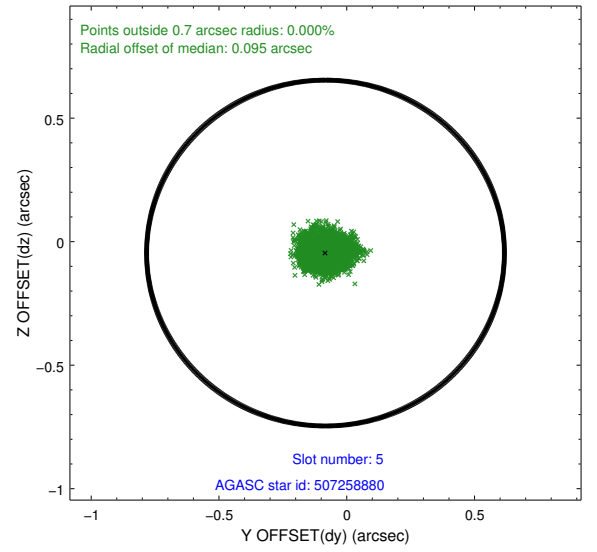
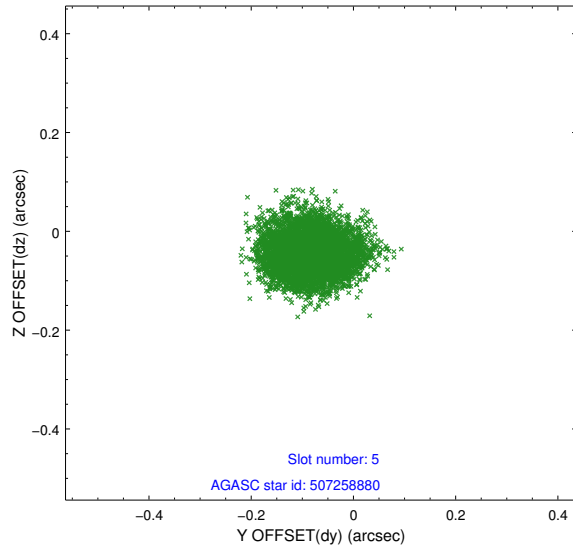
2.4.1 Slot 3



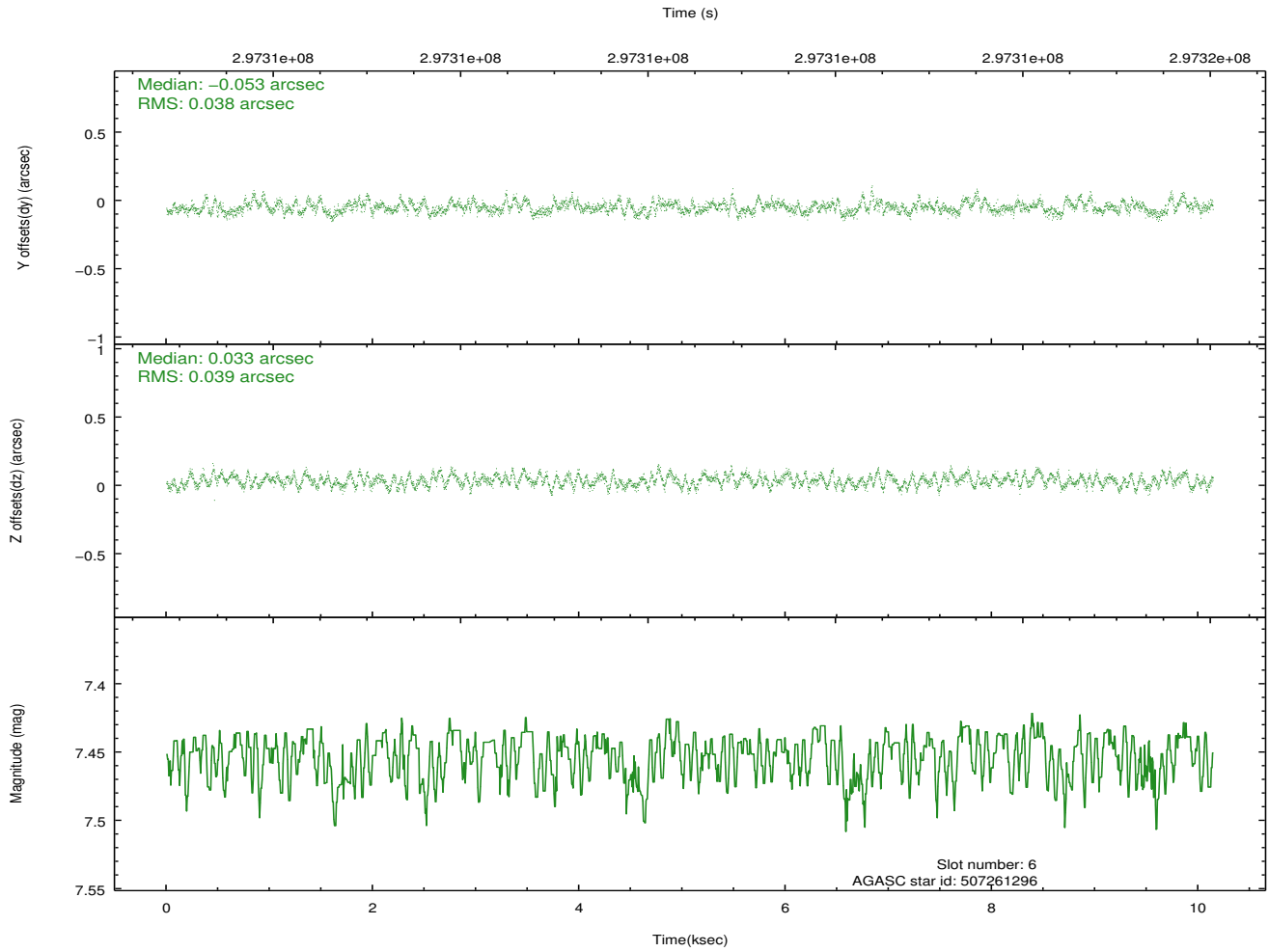
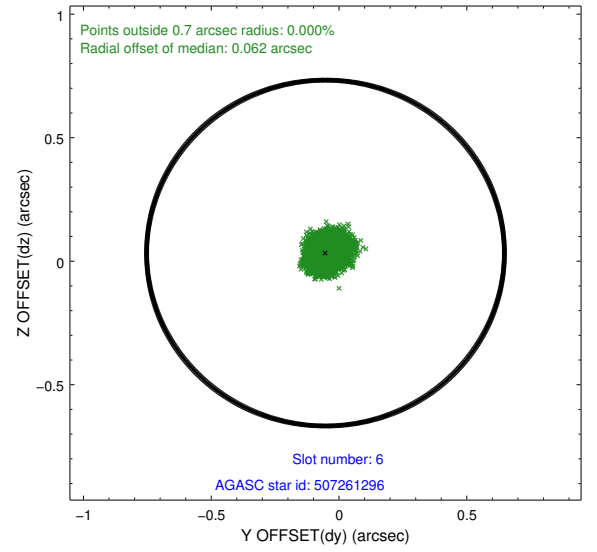
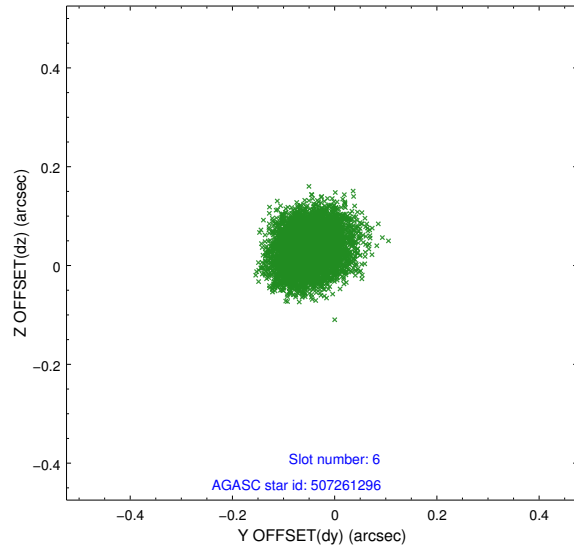
2.4.2 Slot 4



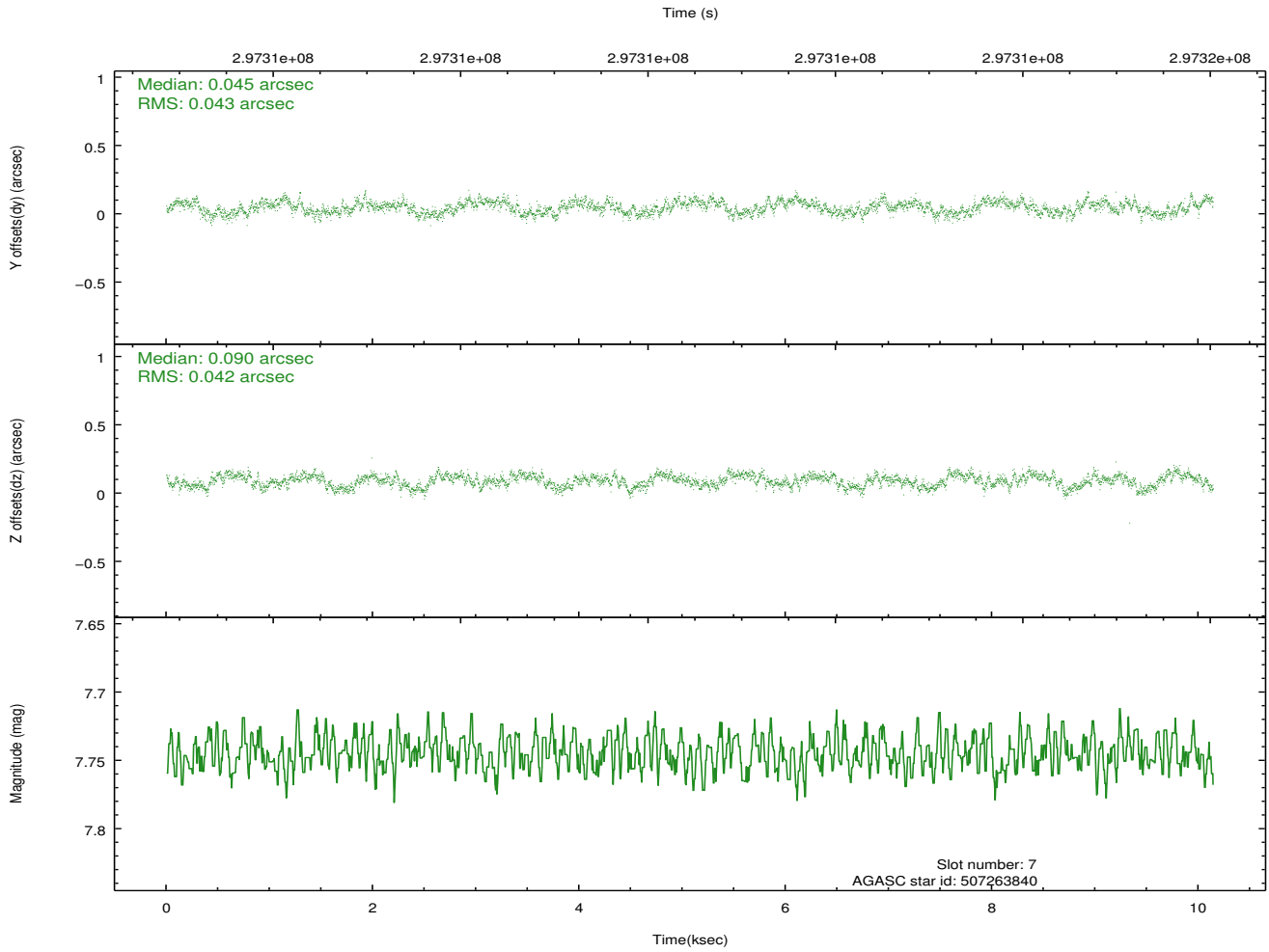
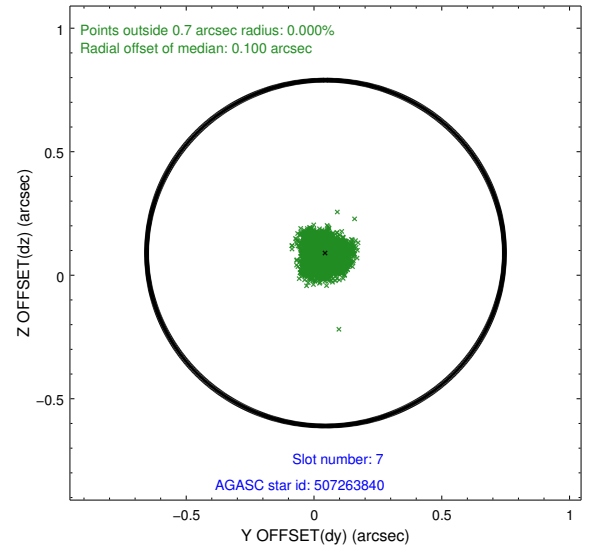
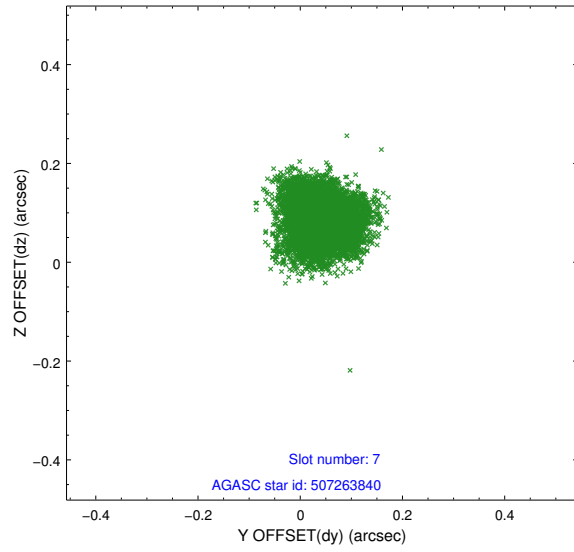
2.4.3 Slot 5



2.4.4 Slot 6

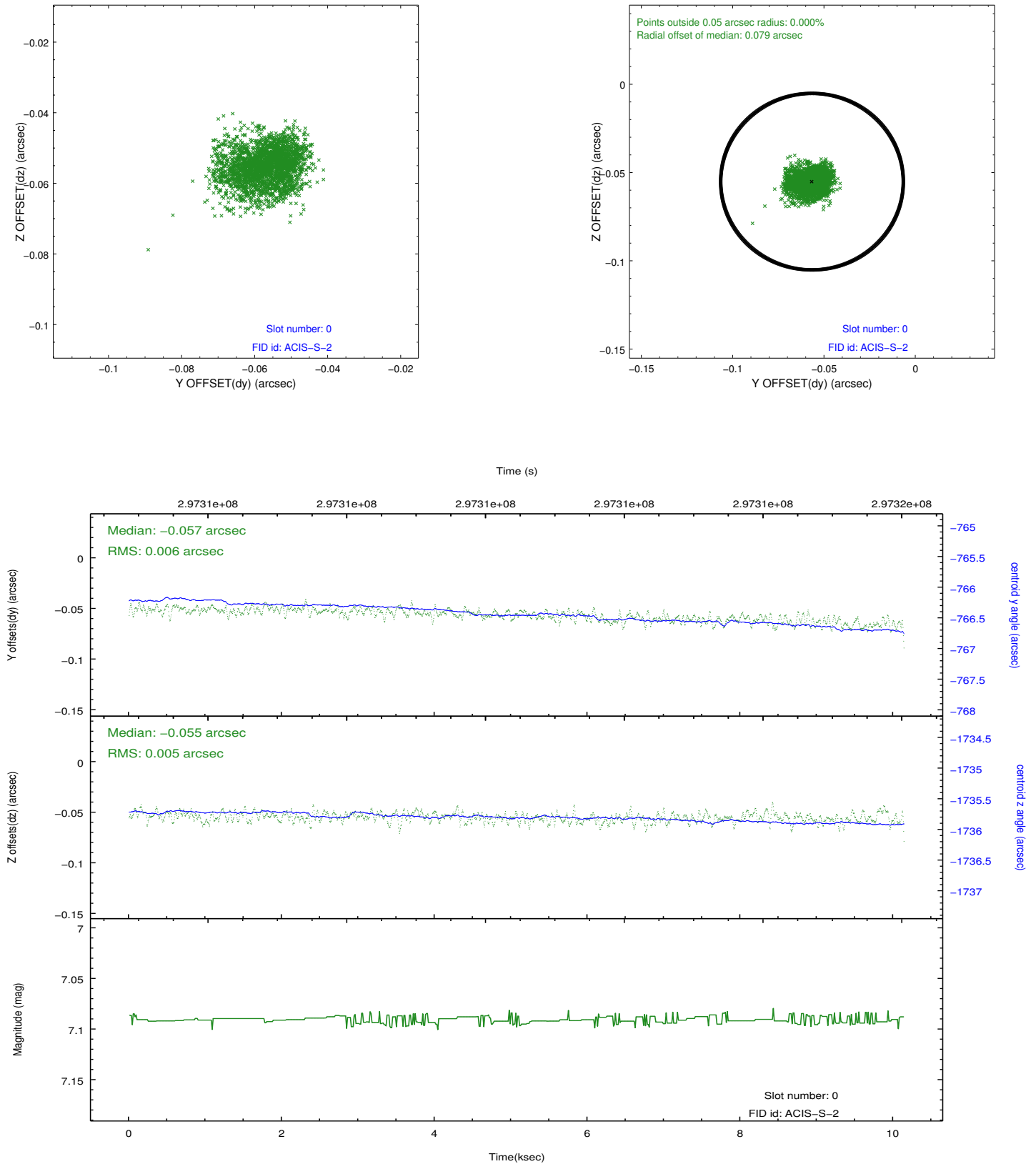


2.4.5 Slot 7

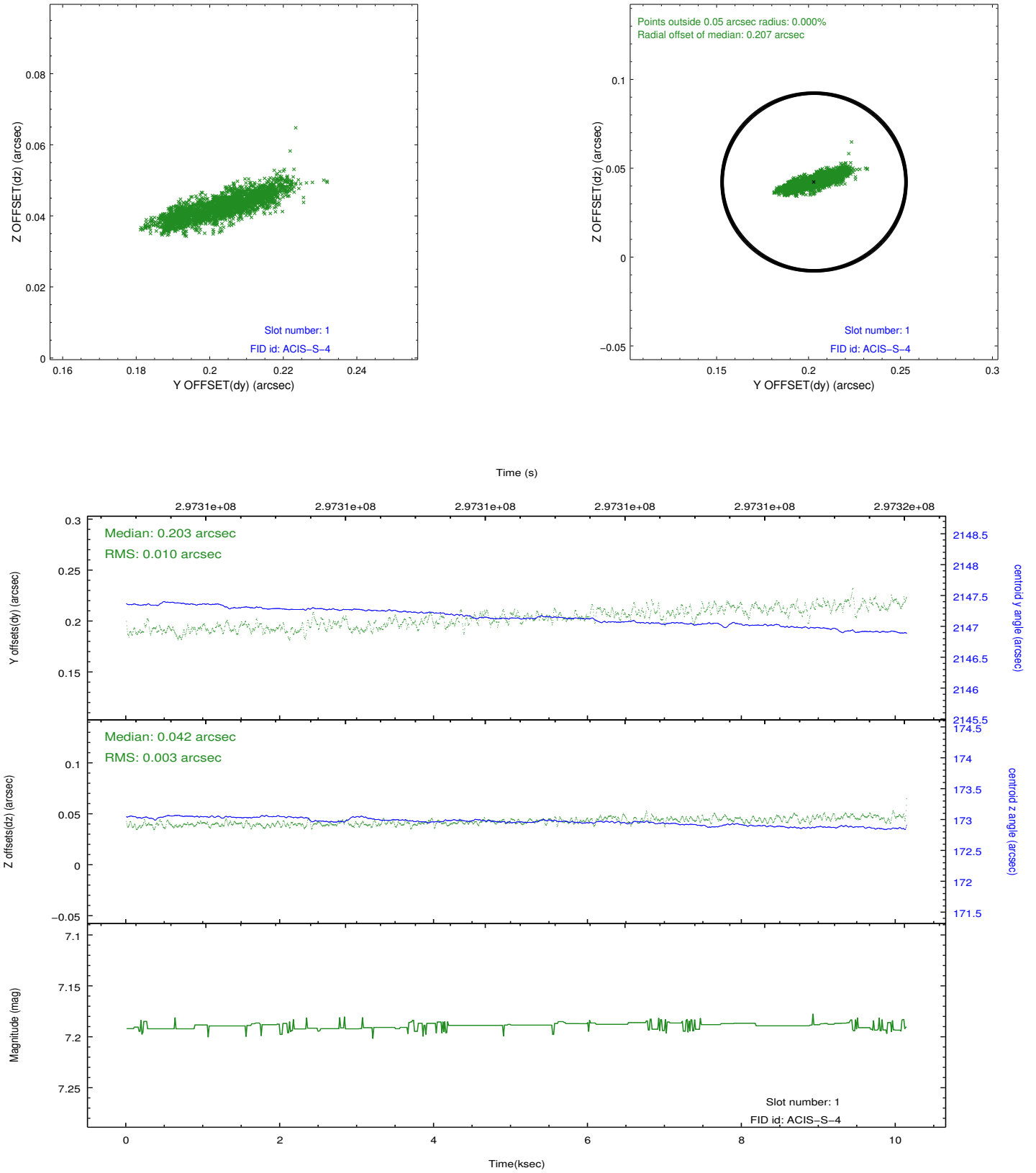


2.5 FID Slots

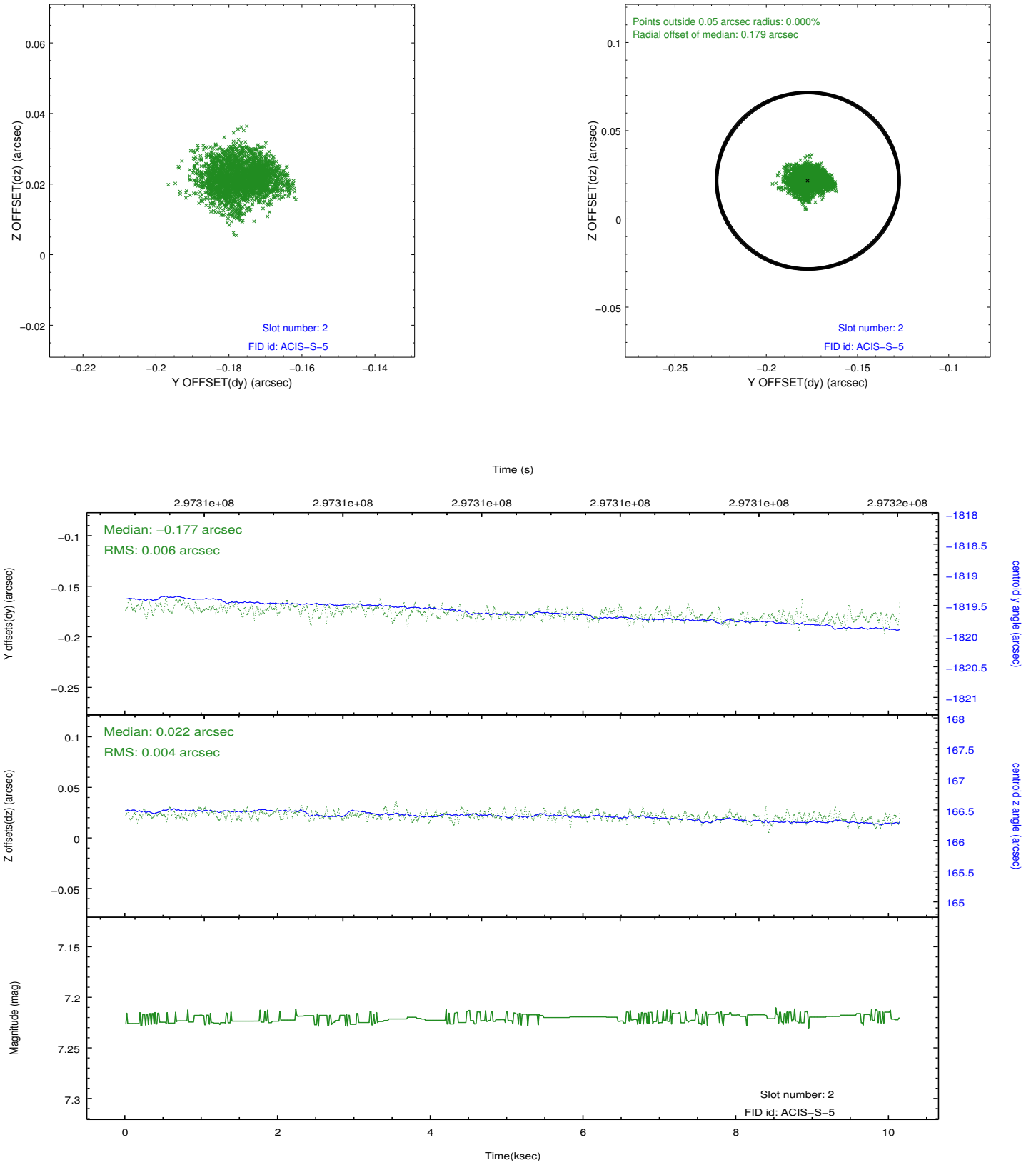
2.5.1 Slot 0



2.5.2 Slot 1



2.5.3 Slot 2



A Summary

A.1 Status

V&V Scientist	Jen Lauer
V&V Date (YYYY-MM-DD)	2012.04.26
V&V Edition	1
V&V Disposition and Status	OK
V&V Charge Time	9.03030006

A.2 Comments

Joint proposal with VLA.