

V&V Reference Report

L2 ASCDS Version : 8.4.3.1

Observation 8176 - L2 Version 3
Chandra X-Ray Center

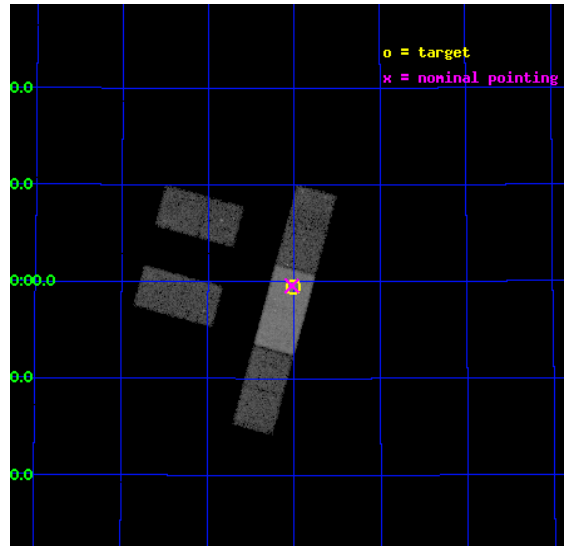
L2 Processing Date : Apr 15 2012

Contents

1	Front	2
2	OBI	3
2.1	OBI	3
2.1.1	Images	3
2.1.2	Bias	3
2.1.3	Parameters	4
2.1.4	Events	4
2.2	Compared Parameters	5
2.3	Aspect	6
2.4	Star Slots	9
2.4.1	Slot 3	9
2.4.2	Slot 4	10
2.4.3	Slot 5	11
2.4.4	Slot 6	12
2.4.5	Slot 7	13
2.5	FID Slots	14
2.5.1	Slot 0	14
2.5.2	Slot 1	15
2.5.3	Slot 2	16
A	Summary	17
A.1	Status	17
A.2	Comments	17

1 Front

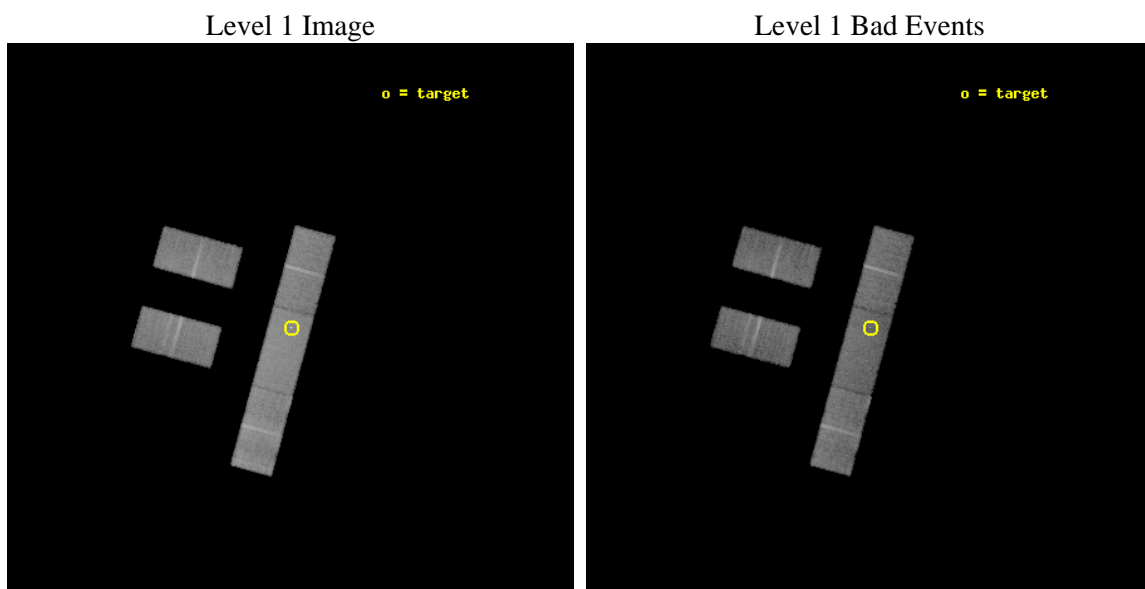
seq_num	600613	Sequence number
obs_id	8176	Observation id
title	Measuring the Dust-to-gas Ratio of High Redshift Galaxies	Proposal
observer	Prof. Xinyu Dai	Principal investigator
object	SBS0909+523	Source name
dtcycle	0	
cycle	P	events from which exps? Prim/Second/Both
ra_targ	138.254583	Observer's specified target RA [deg]
dec_targ	52.991333	Observer's specified target Dec [deg]
ra_nom	138.25660868235	Nominal RA [deg]
dec_nom	52.993046601312	Nominal Dec [deg]
roll_nom	105.26115045574	Nominal Roll [deg]
revision	3	Processing version of data
ontime	20127.999858916	Sum of GTIs [s]
livetime	19653.540274868	Livetime [s]
ontime2	20127.999858916	Sum of GTIs [s]
ontime3	20127.999858916	Sum of GTIs [s]
ontime6	20127.999858916	Sum of GTIs [s]
ontime7	20127.999858916	Sum of GTIs [s]
ontime8	20126.258838773	Sum of GTIs [s]
l2events	86482	Number of level 2 events



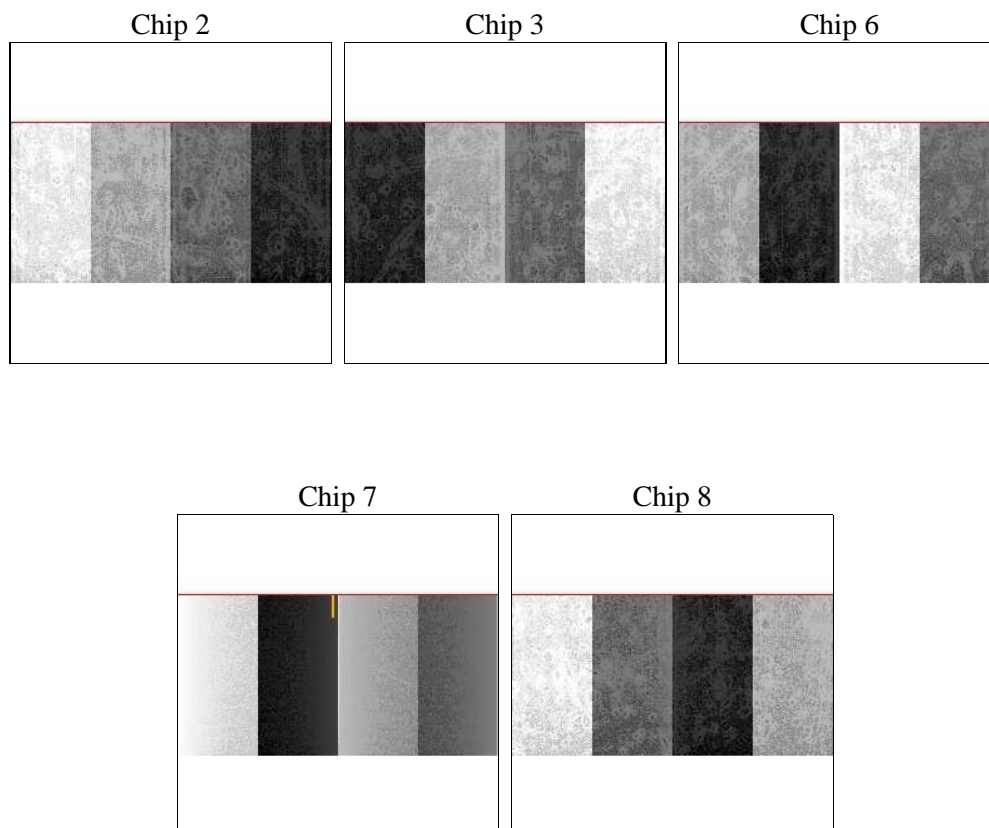
2 OBI

2.1 OBI

2.1.1 Images



2.1.2 Bias



2.1.3 Parameters

obi_num	3	Obi number	sched_exp_time	20000.000000	[s] Scheduled observation exposure time
ascdsver	8.4.3.1	Processing system revision	ontime	20127.999858916	Sum of GTIs [s]
caldsver	4.4.9	 	ontime2	20127.999858916	Sum of GTIs [s]
date	2012-04-15T14:32:41	Date and time of file creation	ontime3	20127.999858916	Sum of GTIs [s]
revision	3	Processing version of data	ontime6	20127.999858916	Sum of GTIs [s]
			ontime7	20127.999858916	Sum of GTIs [s]
			ontime8	20126.258838773	Sum of GTIs [s]
			l1events	488539	Number of level 1 events

2.1.4 Events

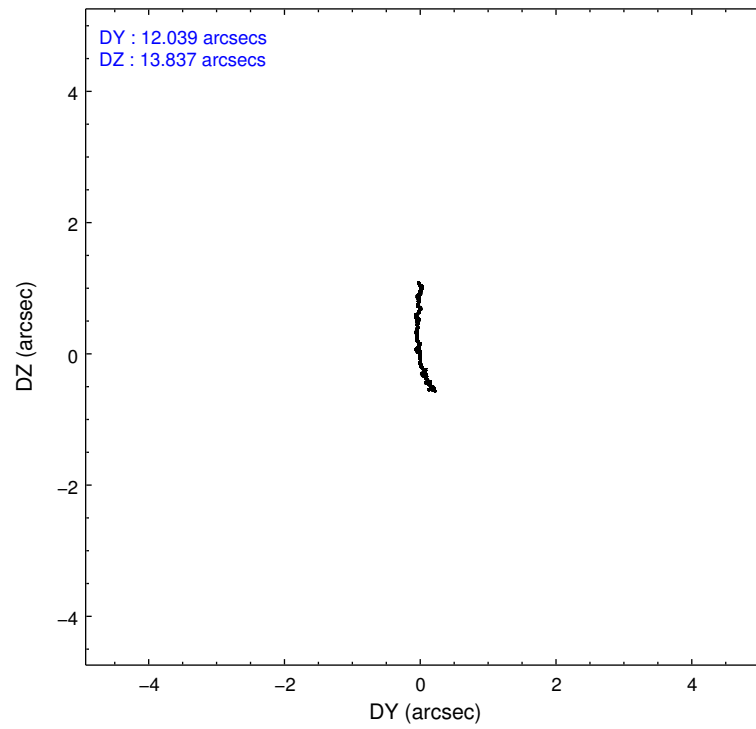
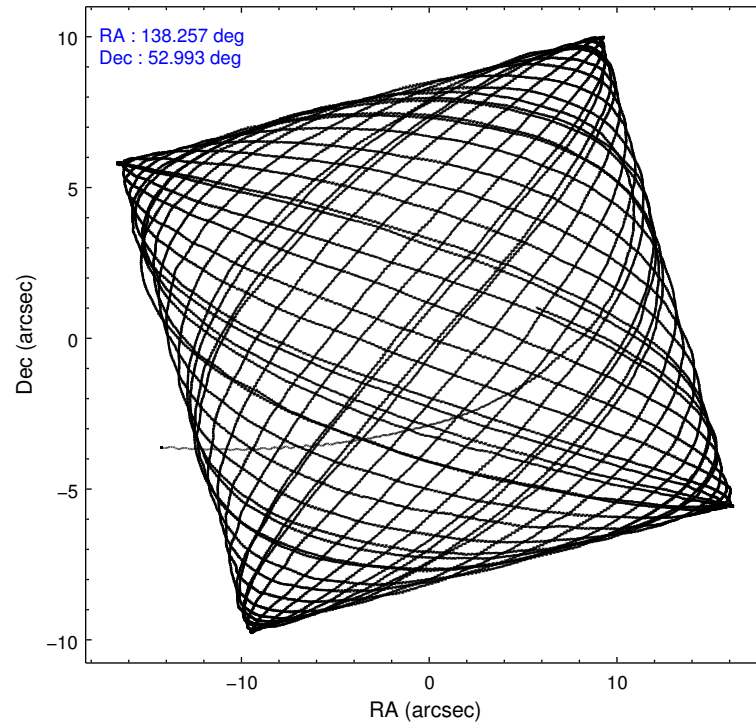
	ccd 2	ccd 3	ccd 6	ccd 7	ccd 8
level 1 events	81743	82499	88475	117631	118191
rejected events	71126	72087	77655	67128	90040
rejected %	87%	87%	87%	57%	76%

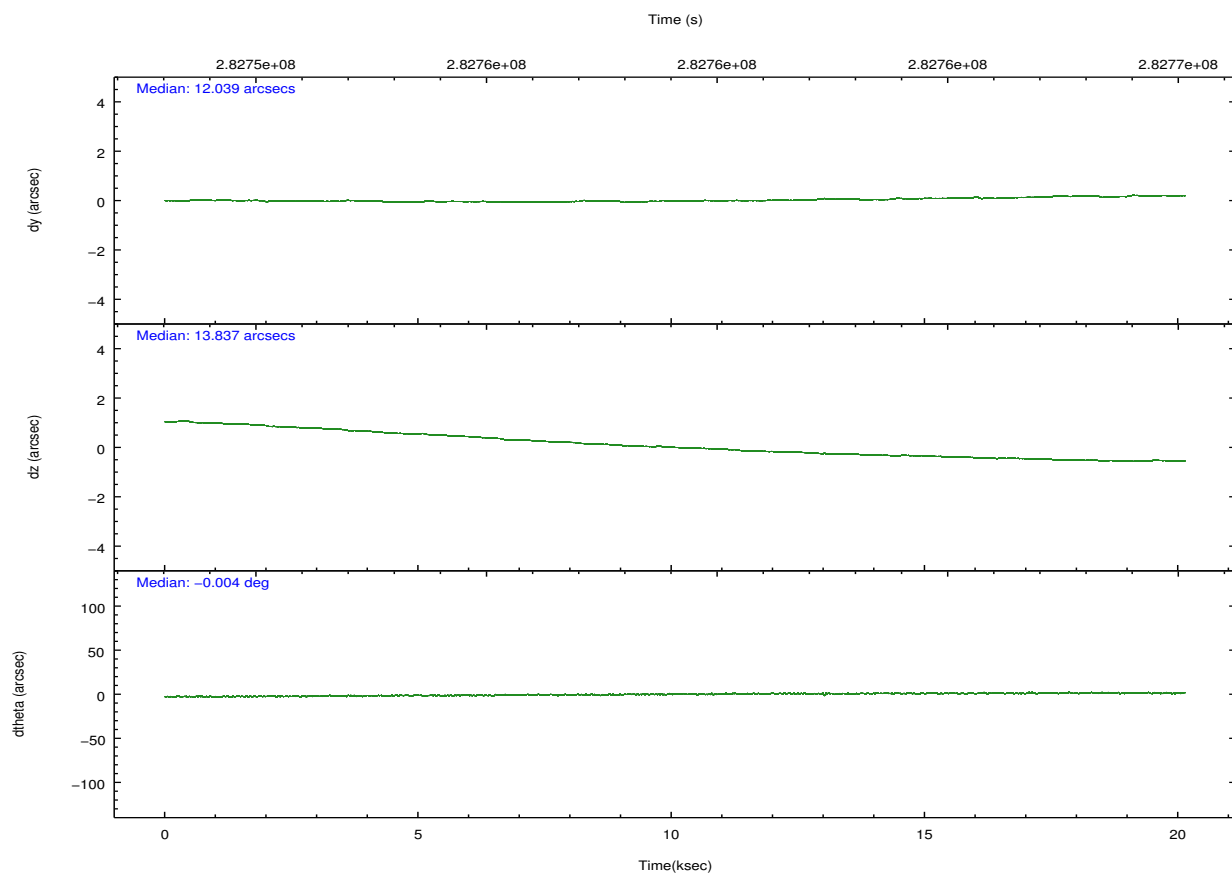
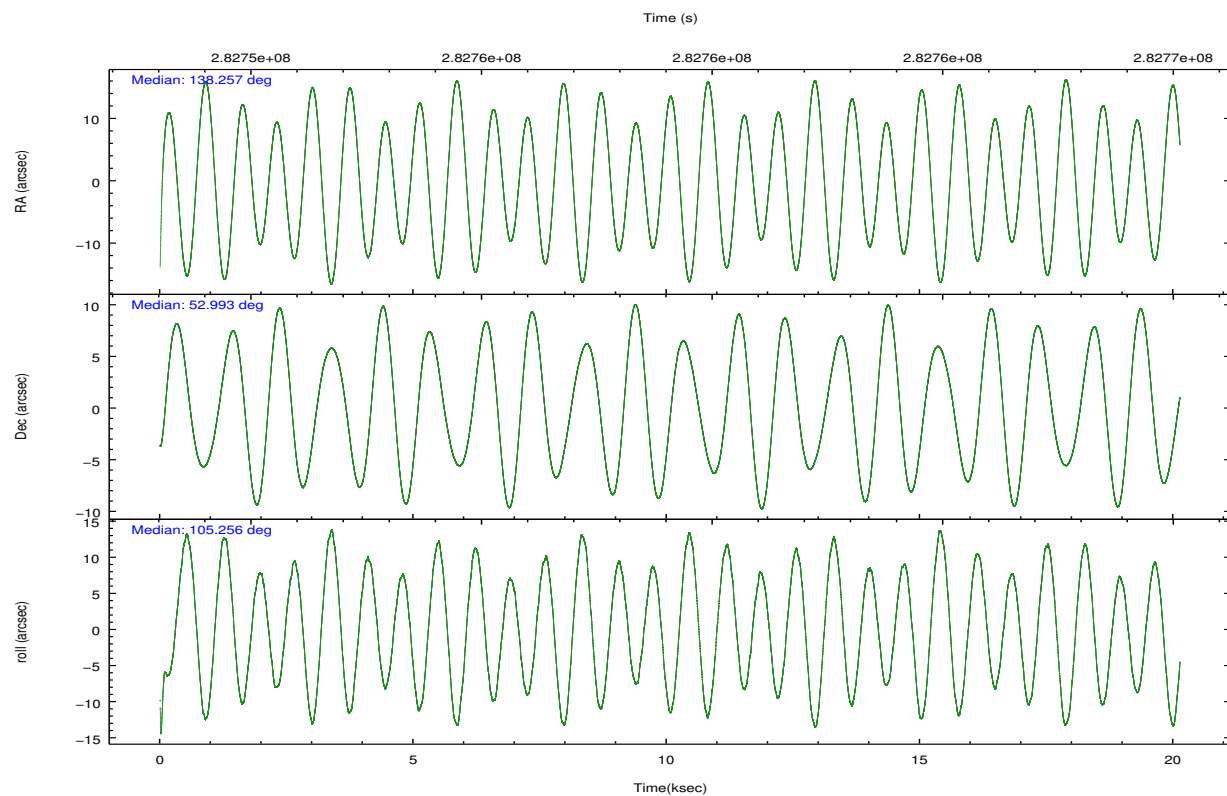
	ccd 2	ccd 3	ccd 6	ccd 7	ccd 8
grade 0 events	4665	4387	4295	5662	8854
	5%	5%	4%	4%	7%
grade 1 events	39	38	33	144	49
	0%	0%	0%	0%	0%
grade 2 events	2229	2082	2275	10685	6002
	2%	2%	2%	9%	5%
grade 3 events	1165	1174	1167	4893	3504
	1%	1%	1%	4%	2%
grade 4 events	1139	1161	1156	4853	3179
	1%	1%	1%	4%	2%
grade 5 events	3168	3715	4063	11041	5349
	3%	4%	4%	9%	4%
grade 6 events	1660	1855	2186	25609	7408
	2%	2%	2%	21%	6%
grade 7 events	67678	68087	73300	54744	83846
	82%	82%	82%	46%	70%

2.2 Compared Parameters

Parameter	Planned	Actual	Parameter	Planned	Actual
Instrument	ACIS	ACIS	Obspar format version number	7	7
Detector	ACIS-23678	ACIS-23678	Obspar file type	PREDICTED	ACTUAL
Grating	NONE	NONE	Obspar update status	NONE	UPDATED
Data mode	VFAINT	VFAINT	Number of optional ACIS chips dropped	0	0
Observation mode	POINTING	POINTING	On-chip summing requested	N	N
[deg] Pointing RA	138.289265	138.2566086823453	Subarray requested	CUSTOM	1/2
[deg] Pointing Dec	52.974060	52.99304660131182	Subarray start row	257	257
[deg] Pointing Roll	105.078464	105.261150455744	Subarray row count	512	512
[mm] SIM focus pos	-0.684267	-0.6828225247311905	Alternating exposures requested	N	N
[mm] SIM defocus	0	0.001444936568705701	[s] Primary exposure time	0.000000	1.7
[mm] SIM translation stage pos	-190.132523	-190.1400660498719			
[mm] SIM translation stage offset	0	0.00754346686406393			
[s] Observation start time (MET)	282749166.184000	282748124.85846			
Observation start date	2006-12-17T13:25:01	2006-12-17T13:08:44			
[s] Observation end time (MET)	282769166.184000	282770153.13451			
Observation end date	2006-12-17T18:58:21	2006-12-17T19:15:53			
Read mode	TIMED	TIMED			

2.3 Aspect



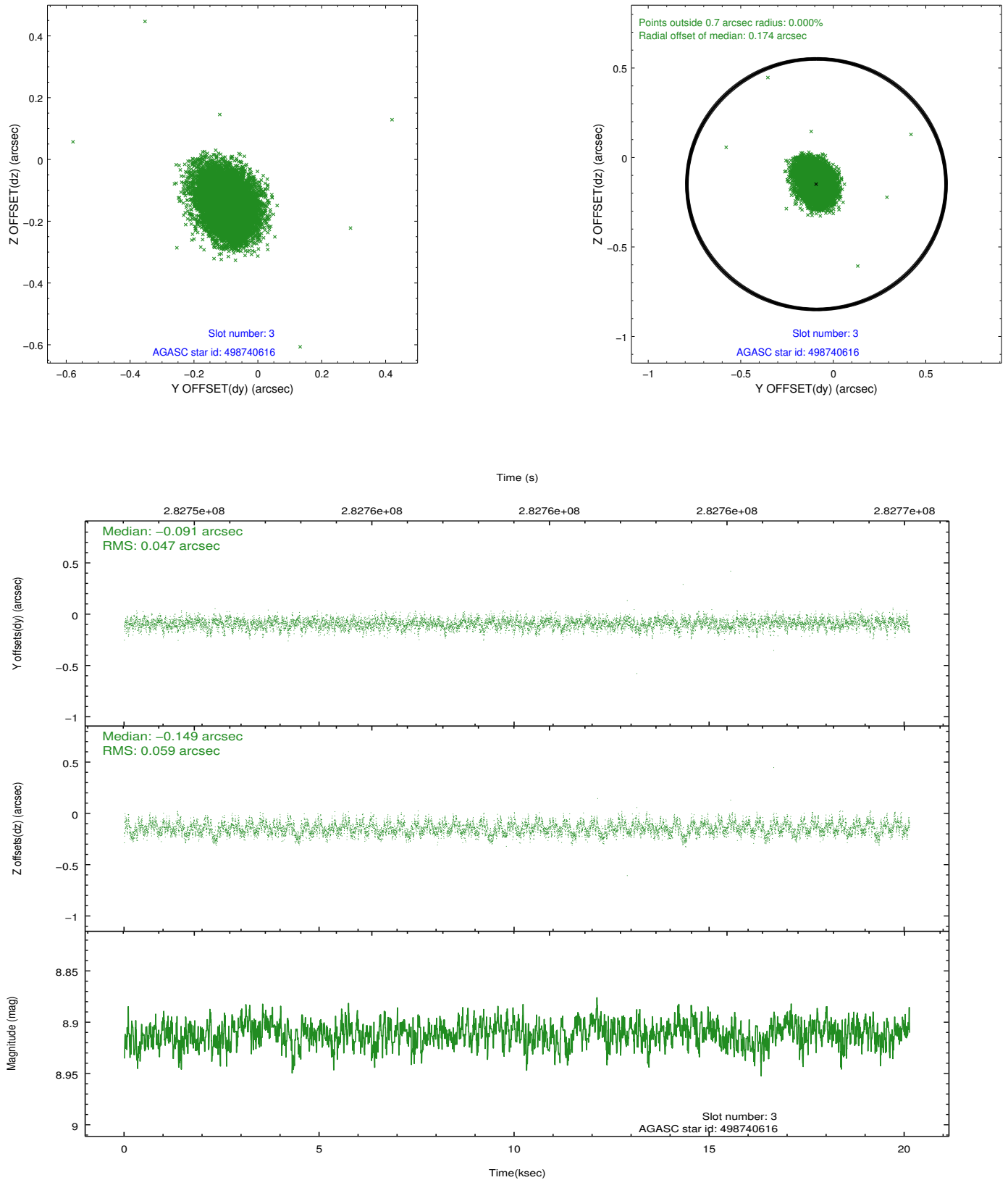


Slot Statistics

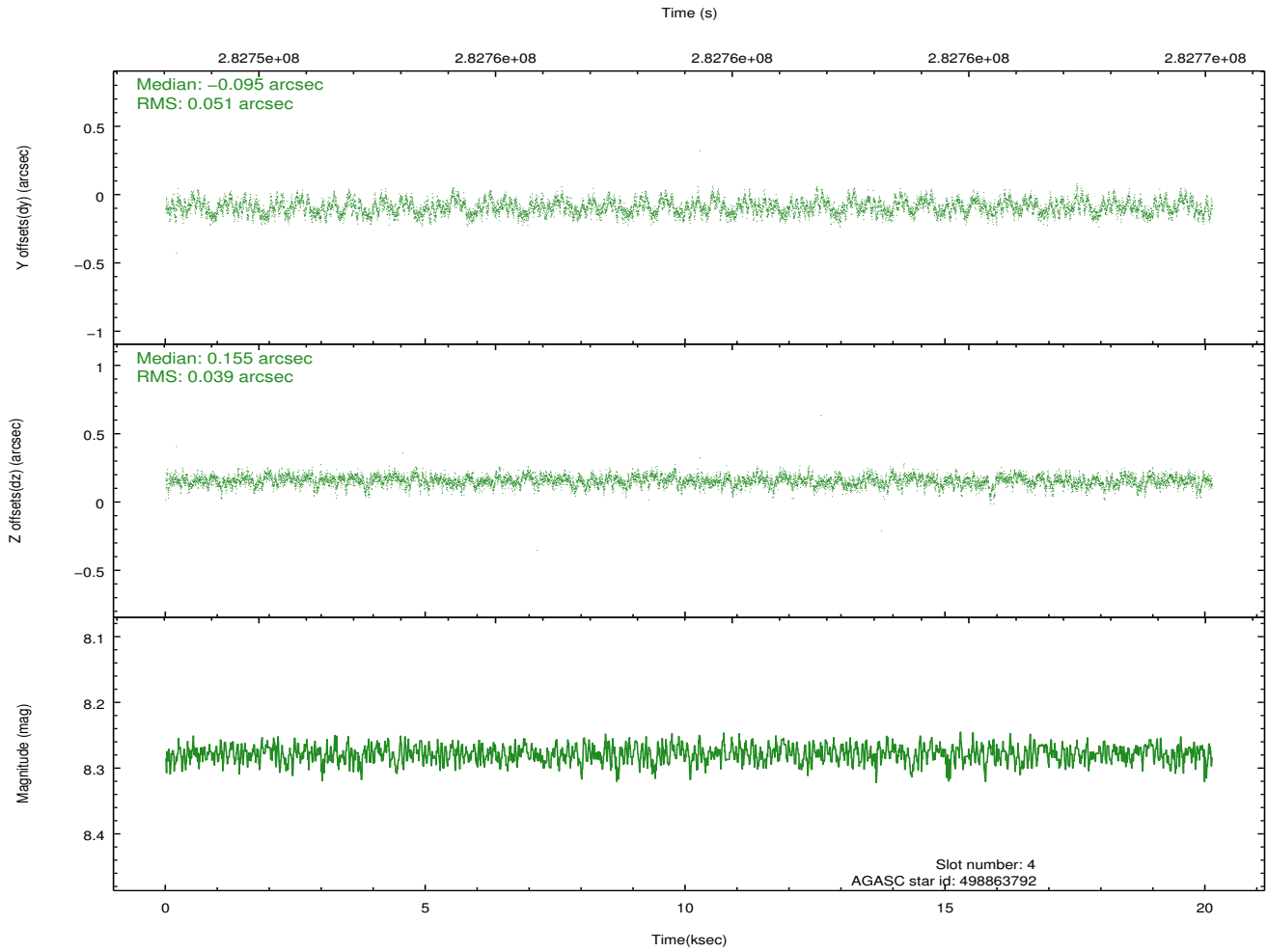
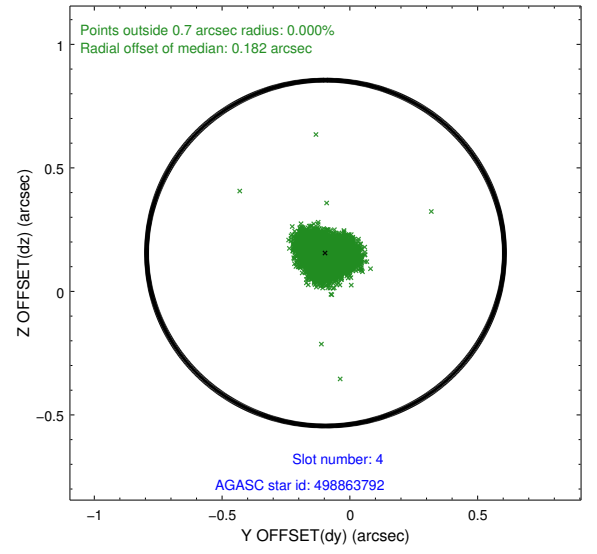
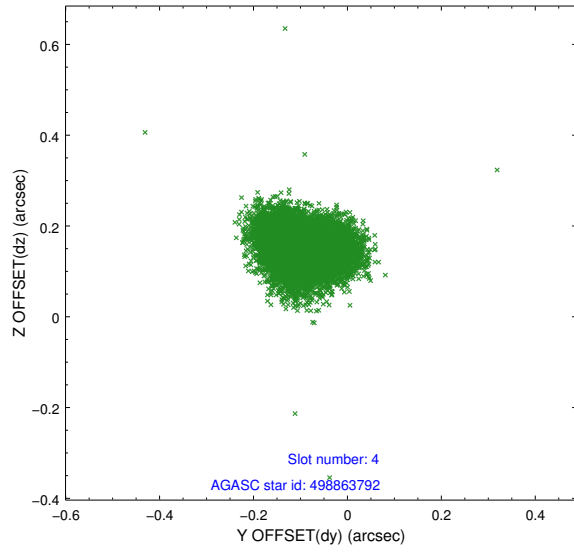
slot	status	id	mag	n_pts	med_dy	med_dz	dr1	dr2	ra	dec	mean_y	mean_z
0	FID	ACIS-S-2	7.10	4911	-0.030	-0.053	0.015	0.026	0.000000	0.000000	-764.98	-1735.34
1	FID	ACIS-S-4	7.20	4911	0.133	0.029	0.009	0.017	0.000000	0.000000	2148.37	173.05
2	FID	ACIS-S-5	7.24	4911	-0.133	0.034	0.014	0.024	0.000000	0.000000	-1817.70	166.91
3	GUIDE	498740616	8.91	9818	-0.091	-0.149	0.079	0.130	137.107508	53.300657	1816.70	2143.92
4	GUIDE	498863792	8.28	9818	-0.095	0.155	0.069	0.109	138.773096	53.489467	1525.12	-1483.04
5	GUIDE	498865336	9.18	9817	0.149	0.095	0.089	0.144	139.050858	52.564533	-1848.06	-1227.90
6	GUIDE	498866152	8.64	9818	0.113	0.113	0.079	0.132	139.331339	52.912153	-787.86	-2130.27
7	GUIDE	498733008	9.00	9812	-0.073	-0.208	0.084	0.135	137.038124	53.259022	1713.94	2328.55

2.4 Star Slots

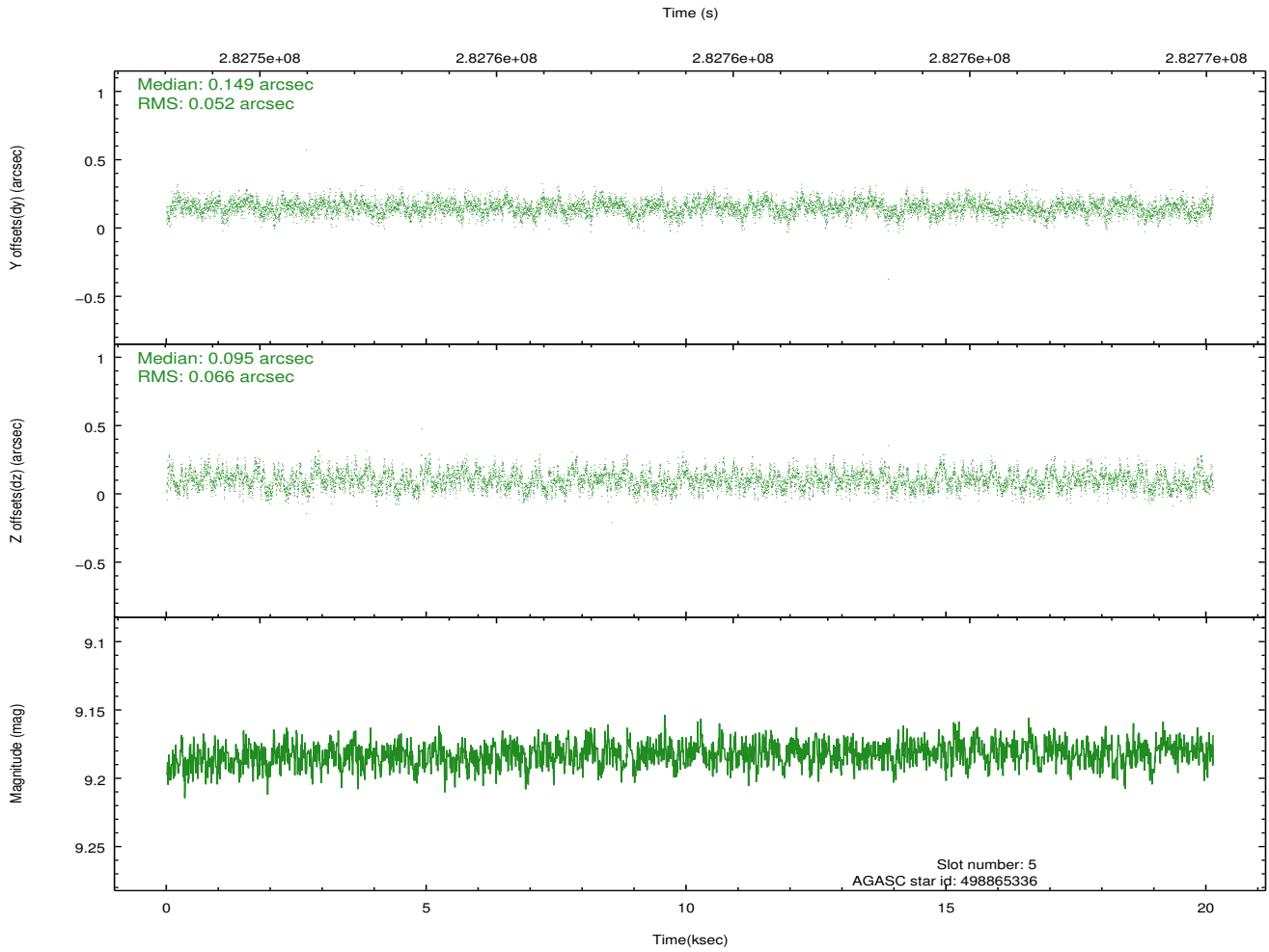
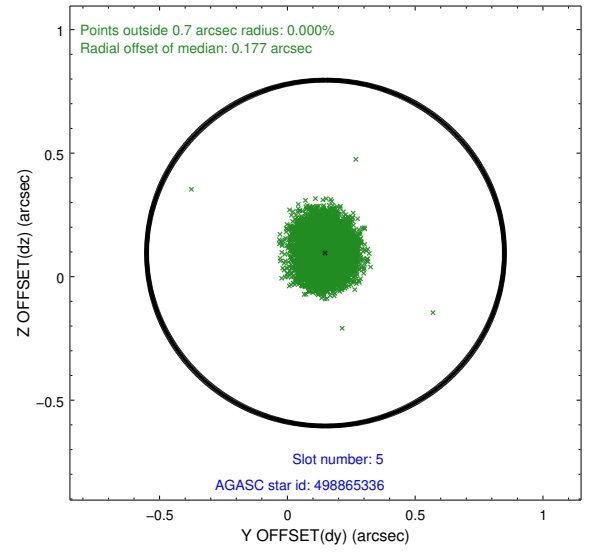
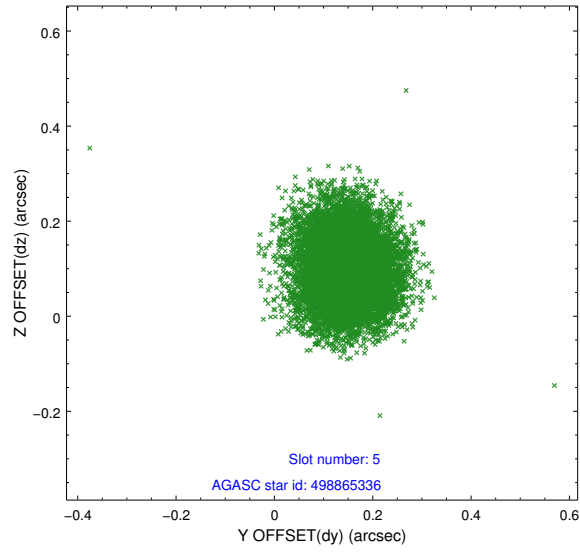
2.4.1 Slot 3



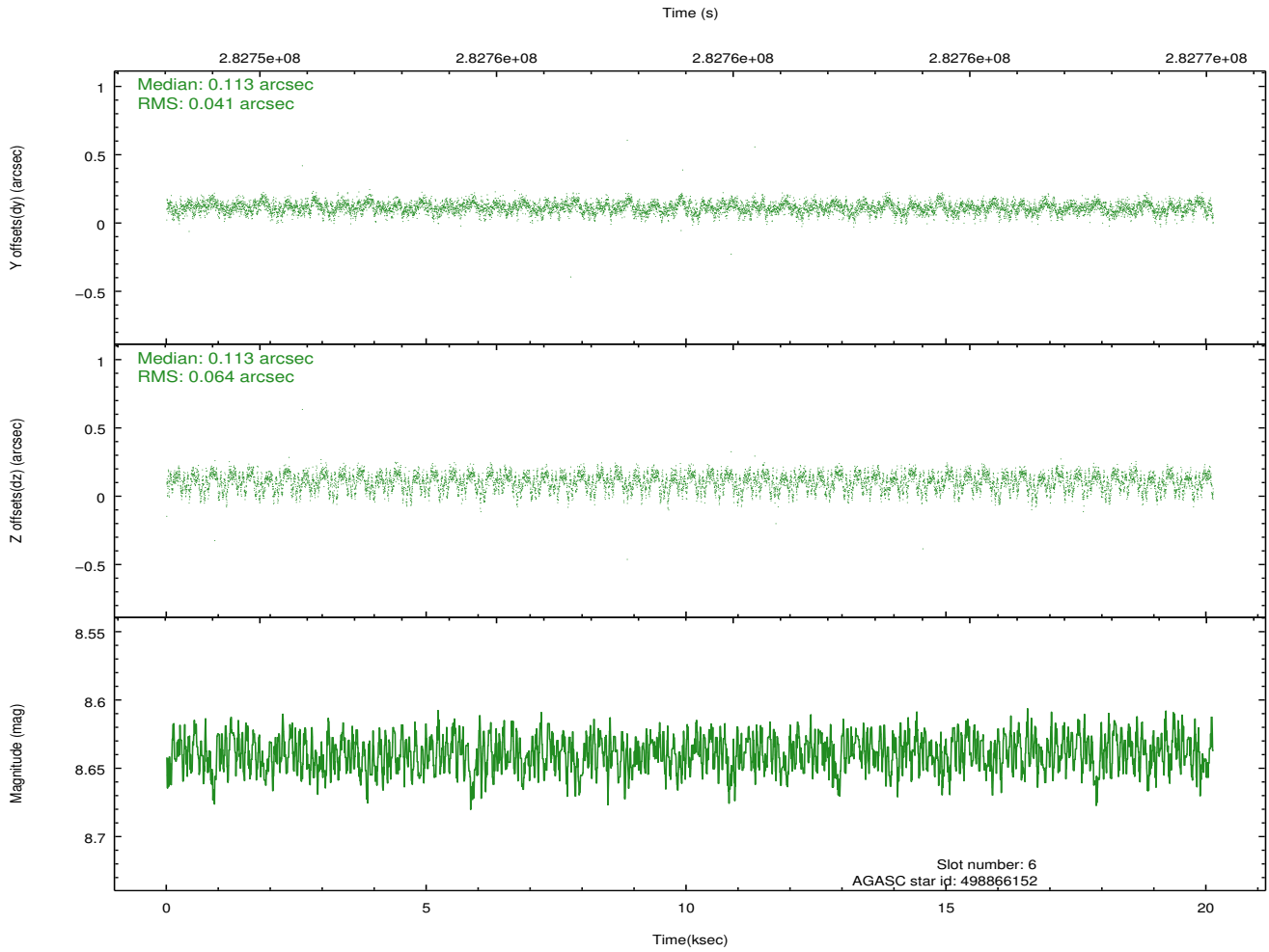
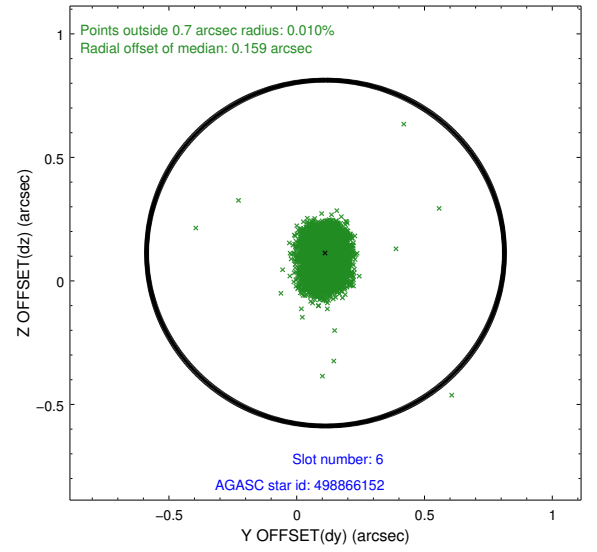
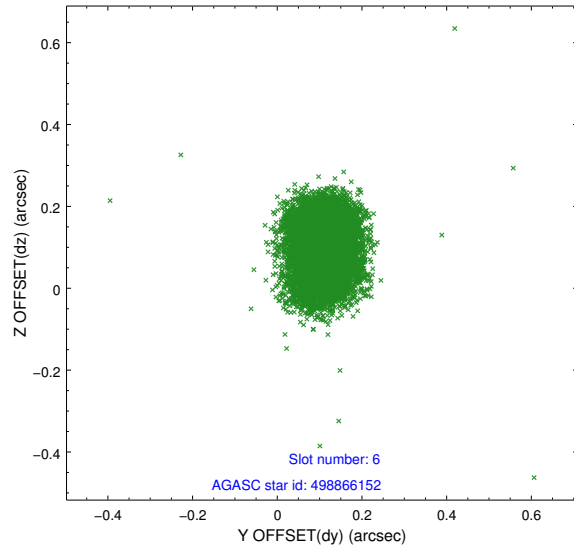
2.4.2 Slot 4



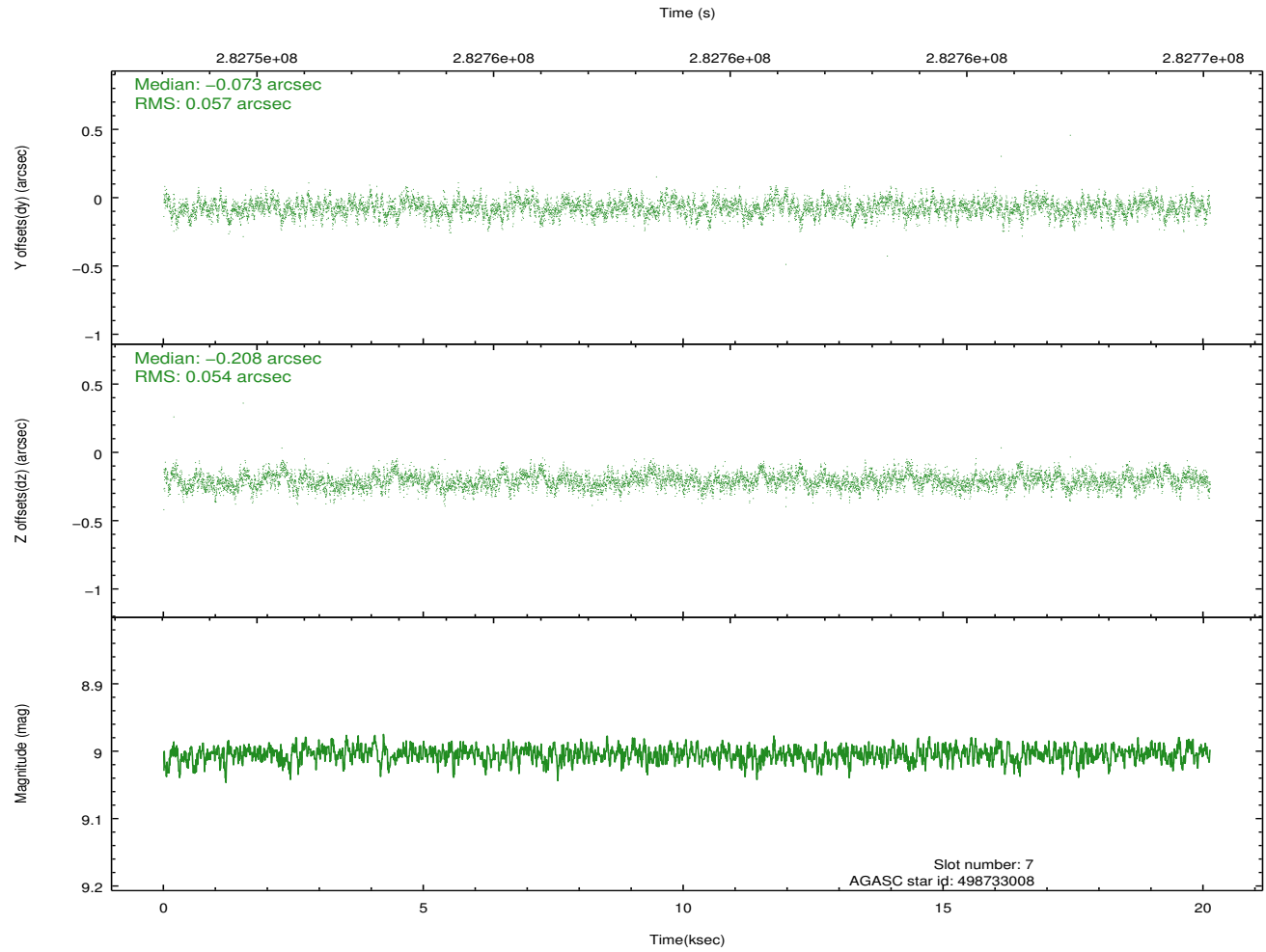
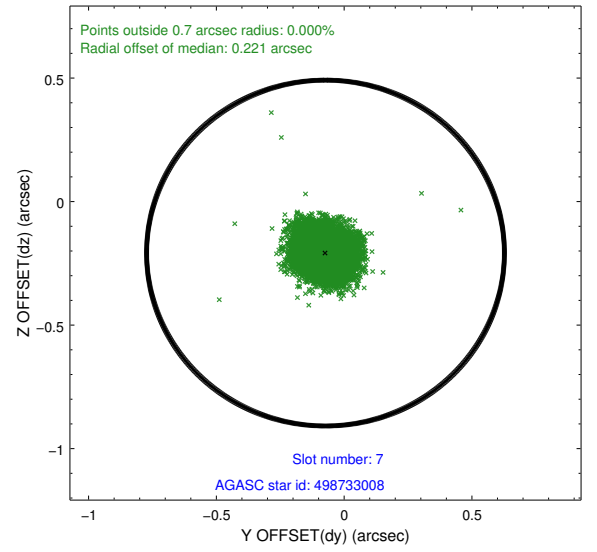
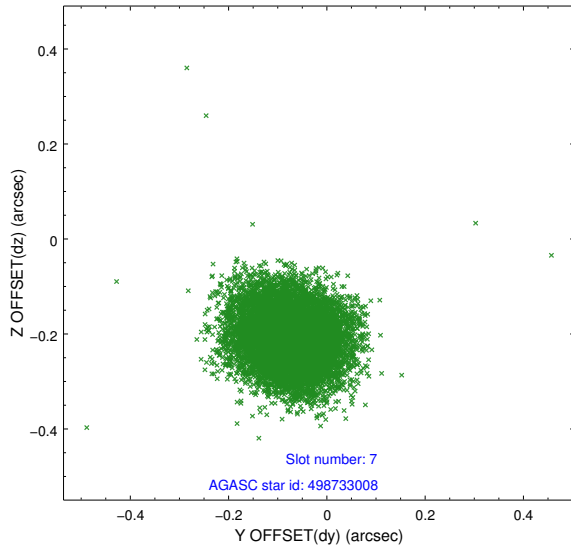
2.4.3 Slot 5



2.4.4 Slot 6

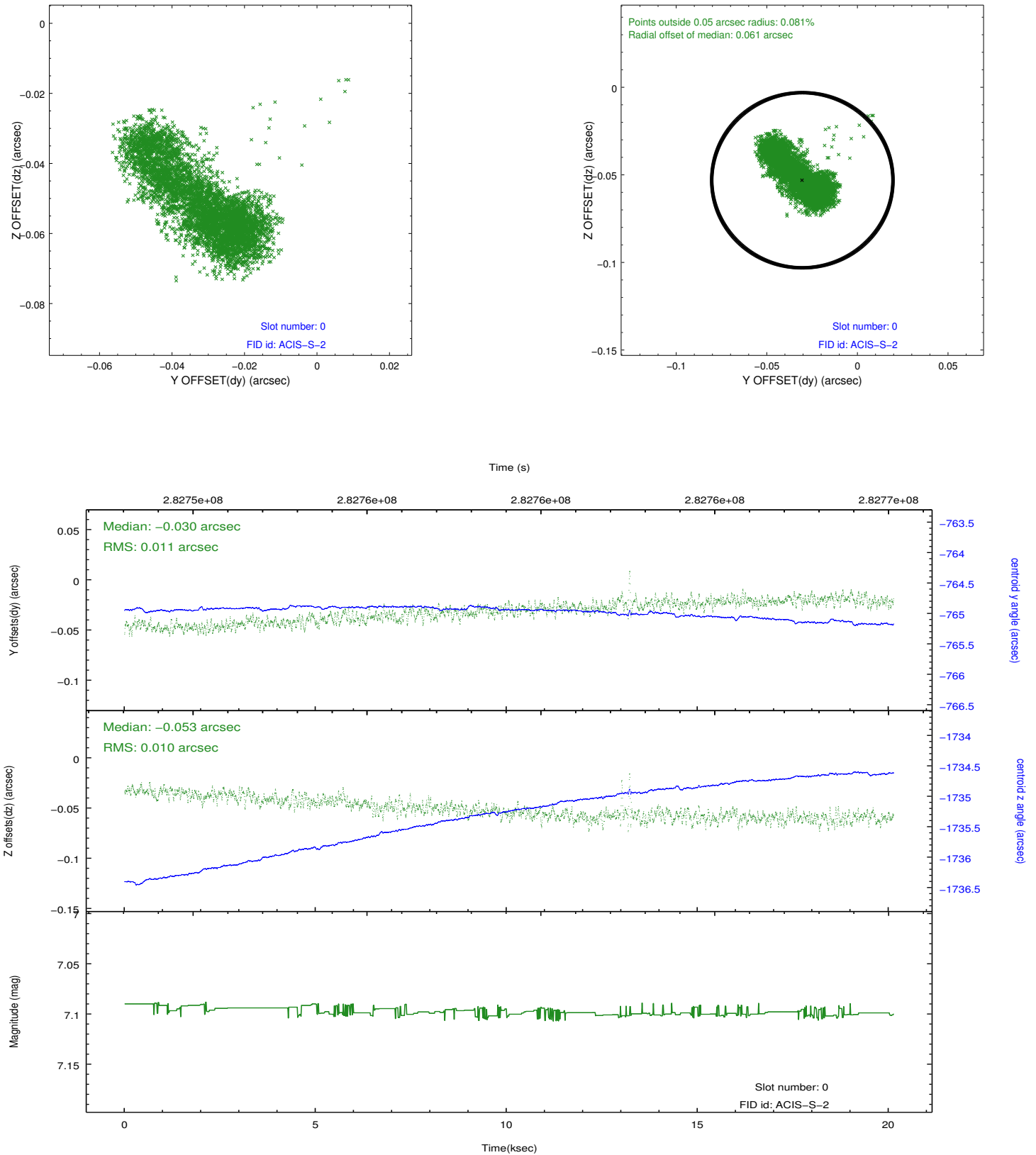


2.4.5 Slot 7

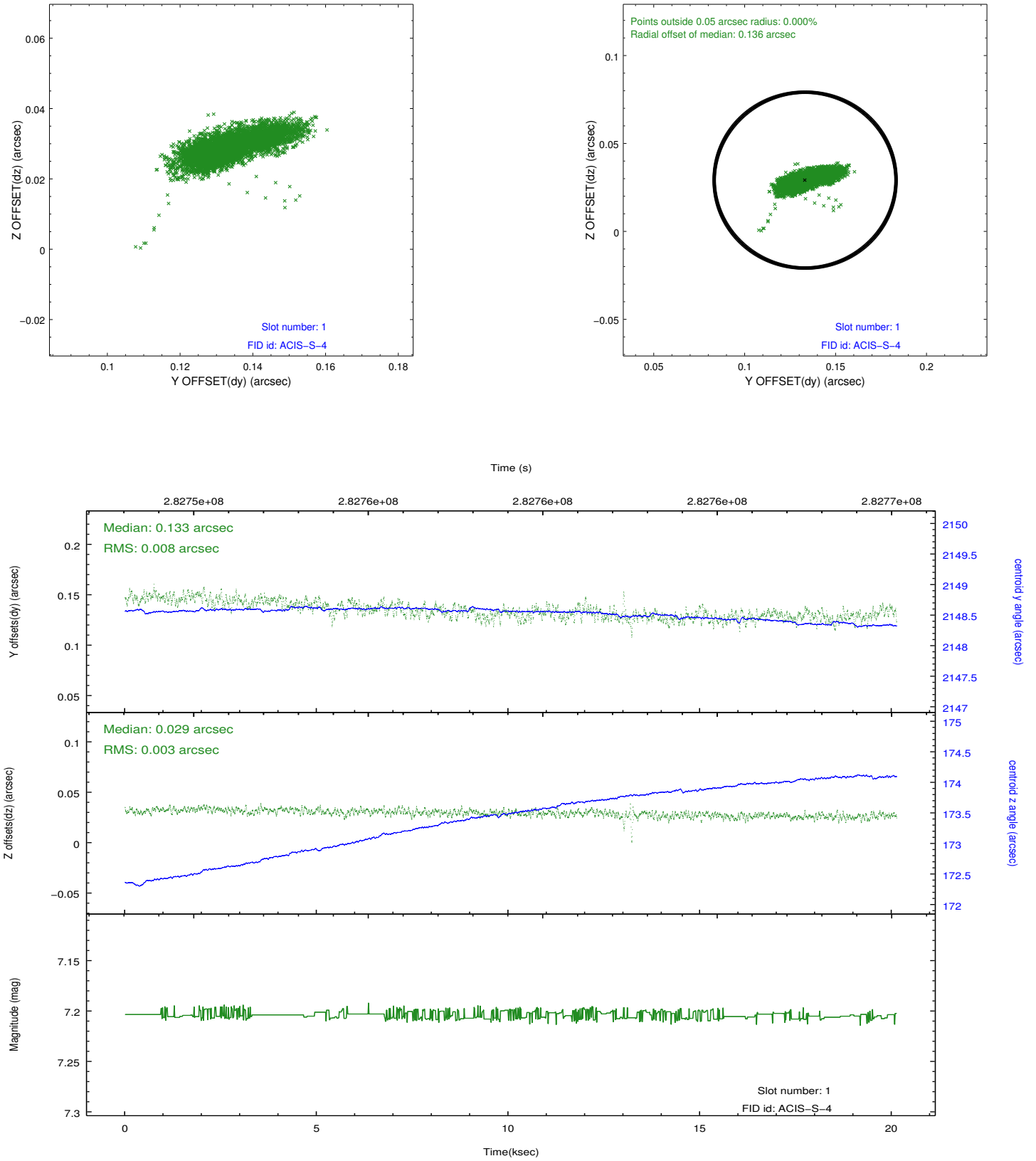


2.5 FID Slots

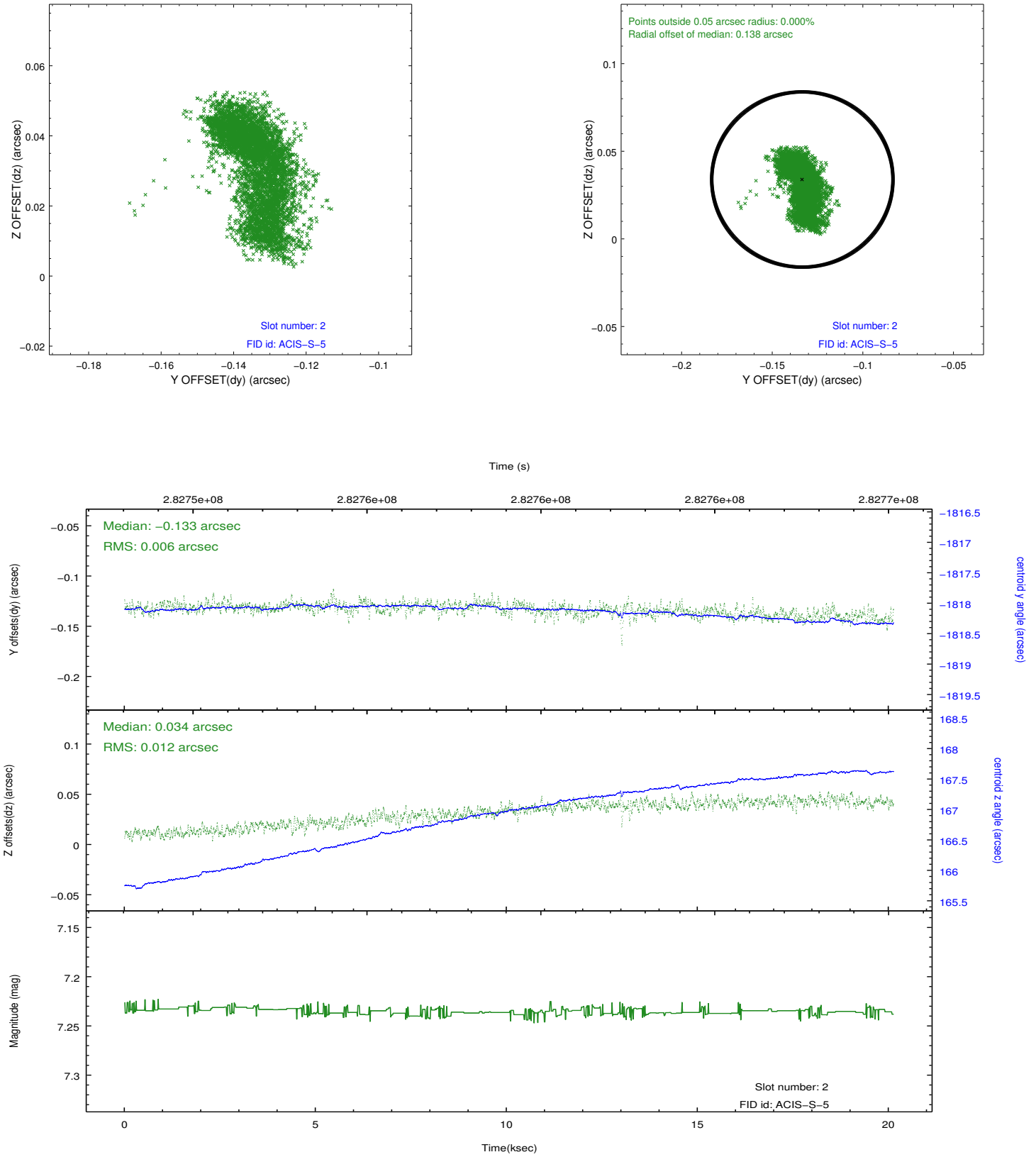
2.5.1 Slot 0



2.5.2 Slot 1



2.5.3 Slot 2



A Summary

A.1 Status

V&V Scientist	Jen Lauer
V&V Date (YYYY-MM-DD)	2012.04.18
V&V Edition	1
V&V Disposition and Status	OK
V&V Charge Time	20.1279998

A.2 Comments