

# V&V Reference Report

## L2 ASCDS Version : 8.4.4

Observation 7626 - L2 Version 3  
Chandra X-Ray Center

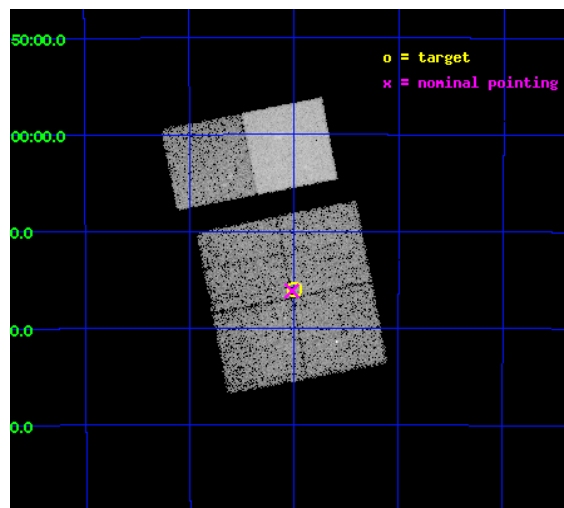
L2 Processing Date : Apr 19 2012

## Contents

<b>1</b>	<b>Front</b>	<b>2</b>
<b>2</b>	<b>OBI</b>	<b>3</b>
2.1	OBI . . . . .	3
2.1.1	Images . . . . .	3
2.1.2	Bias . . . . .	3
2.1.3	Parameters . . . . .	4
2.1.4	Events . . . . .	4
2.2	Compared Parameters . . . . .	5
2.3	Aspect . . . . .	6
2.4	Star Slots . . . . .	9
2.4.1	Slot 3 . . . . .	9
2.4.2	Slot 4 . . . . .	10
2.4.3	Slot 5 . . . . .	11
2.4.4	Slot 6 . . . . .	12
2.4.5	Slot 7 . . . . .	13
2.5	FID Slots . . . . .	14
2.5.1	Slot 0 . . . . .	14
2.5.2	Slot 1 . . . . .	15
2.5.3	Slot 2 . . . . .	16
<b>A</b>	<b>Summary</b>	<b>17</b>
A.1	Status . . . . .	17
A.2	Comments . . . . .	17

# 1 Front

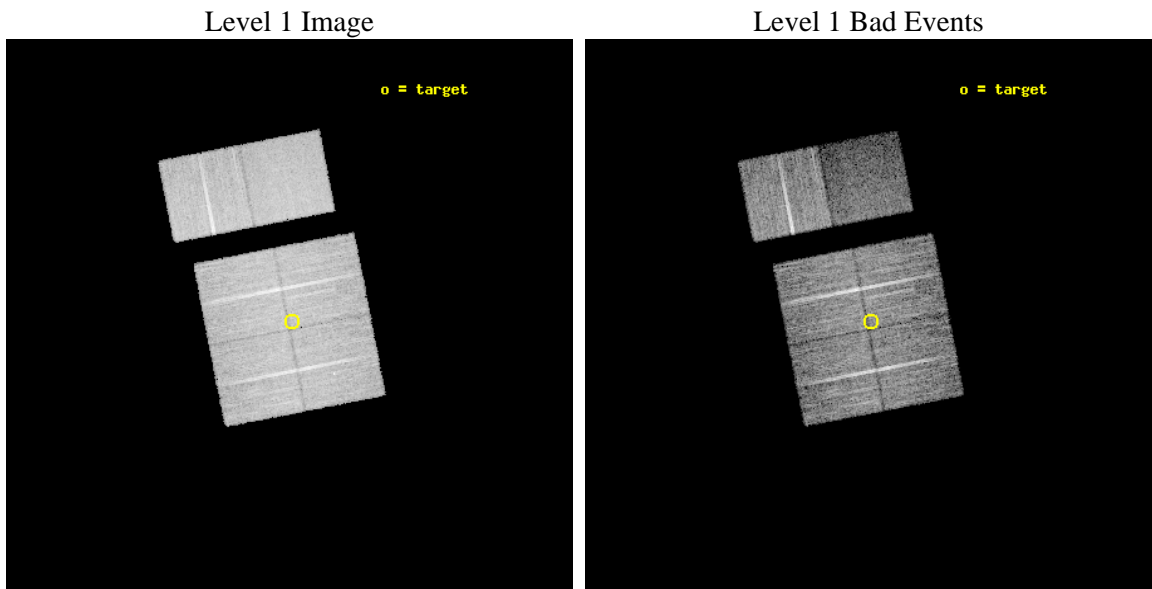
seq_num	500755	Sequence number
obs_id	7626	Observation id
title	A Better Mousetrap: Localizing RRATs with Chandra	Proposal title
observer	Dr. Shami Chatterjee	Principal investigator
object	J0848-43	Source name
dtcycle	0	&#160
cycle	P	events from which exps? Prim/Second/Both
ra_targ	132.0	Observer's specified target RA [deg]
dec_targ	-43.266667	Observer's specified target Dec [deg]
ra_nom	132.00542501039	Nominal RA [deg]
dec_nom	-43.269245327317	Nominal Dec [deg]
roll_nom	348.9393609339	Nominal Roll [deg]
revision	3	Processing version of data
ontime	10844.79995966	Sum of GTIs [s]
livetime	10707.476572616	Livetime [s]
ontime0	10844.79995966	Sum of GTIs [s]
ontime1	10844.79995966	Sum of GTIs [s]
ontime2	10844.79995966	Sum of GTIs [s]
ontime3	10844.79995966	Sum of GTIs [s]
ontime6	10844.79995966	Sum of GTIs [s]
ontime7	10844.79995966	Sum of GTIs [s]
l2events	90122	Number of level 2 events



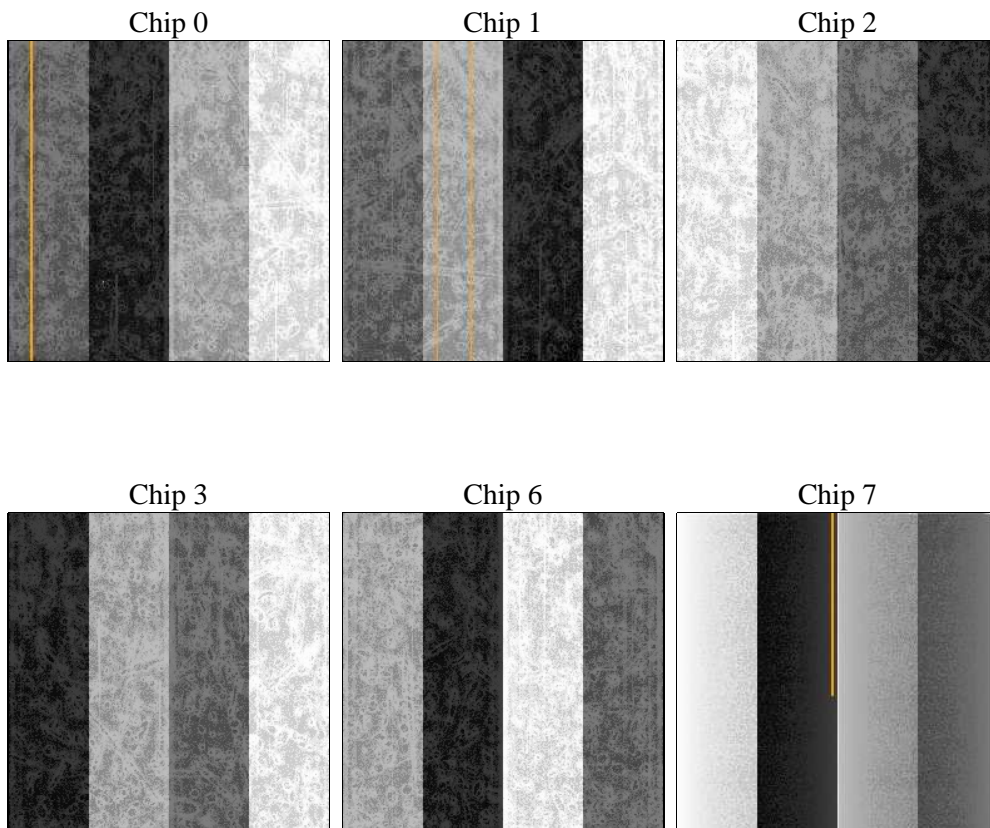
## 2 OBI

### 2.1 OBI

#### 2.1.1 Images



#### 2.1.2 Bias



### 2.1.3 Parameters

obi_num	0	Obi number	sched_exp_time	10800.000000	[s] Scheduled observation exposure time
ascdsver	8.4.4	Processing system revision	ontime	10844.79995966	Sum of GTIs [s]
caldsver	4.4.9	&#160	ontime0	10844.79995966	Sum of GTIs [s]
date	2012-04-19T14:39:59	Date and time of file creation	ontime1	10844.79995966	Sum of GTIs [s]
revision	3	Processing version of data	ontime2	10844.79995966	Sum of GTIs [s]
			ontime3	10844.79995966	Sum of GTIs [s]
			ontime6	10844.79995966	Sum of GTIs [s]
			ontime7	10844.79995966	Sum of GTIs [s]
			l1events	476844	Number of level 1 events

### 2.1.4 Events

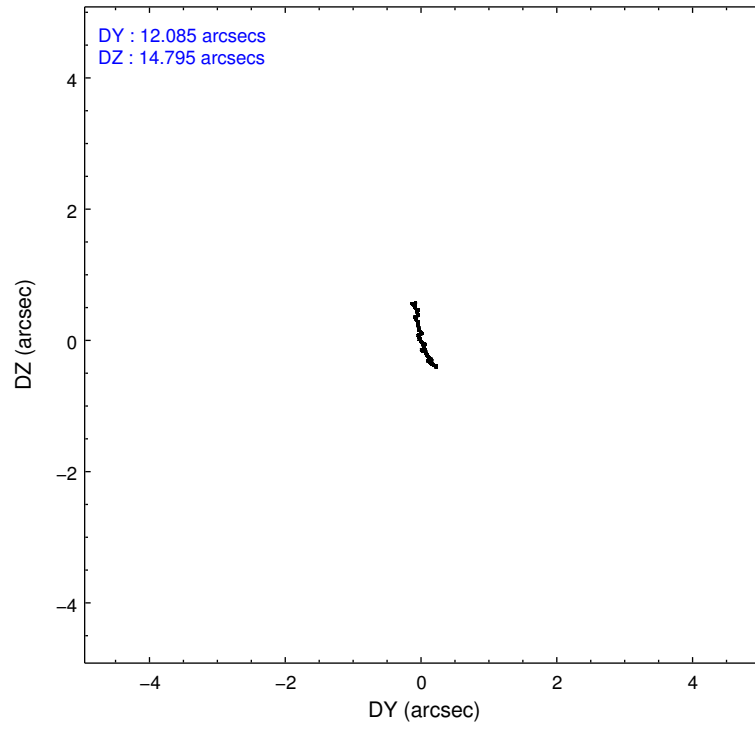
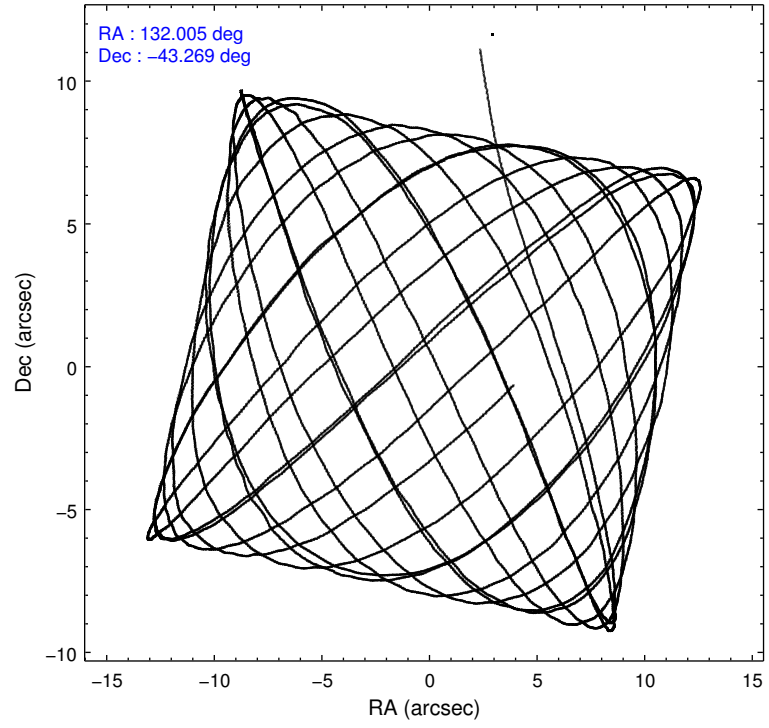
	ccd 0	ccd 1	ccd 2	ccd 3	ccd 6	ccd 7		ccd 0	ccd 1	ccd 2	ccd 3	ccd 6	ccd 7
level 1 events	76577	73358	83524	79212	85024	79149	grade 0 events	5739	6275	6083	6237	6353	6894
rejected events	65636	61498	72507	68172	73374	36428		7%	8%	7%	7%	7%	8%
rejected %	85%	83%	86%	86%	86%	46%	grade 1 events	44	53	57	52	57	117
								0%	0%	0%	0%	0%	0%
							grade 2 events	1980	1947	1985	1798	1970	9135
								2%	2%	2%	2%	2%	11%
							grade 3 events	952	1015	802	861	894	4175
								1%	1%	0%	1%	1%	5%
							grade 4 events	816	981	874	799	839	4178
								1%	1%	1%	1%	0%	5%
							grade 5 events	2254	2473	2188	2584	2628	7886
								2%	3%	2%	3%	3%	9%
							grade 6 events	1460	1645	1279	1351	1602	18366
								1%	2%	1%	1%	1%	23%
							grade 7 events	63332	58969	70256	65530	70681	28398
								82%	80%	84%	82%	83%	35%

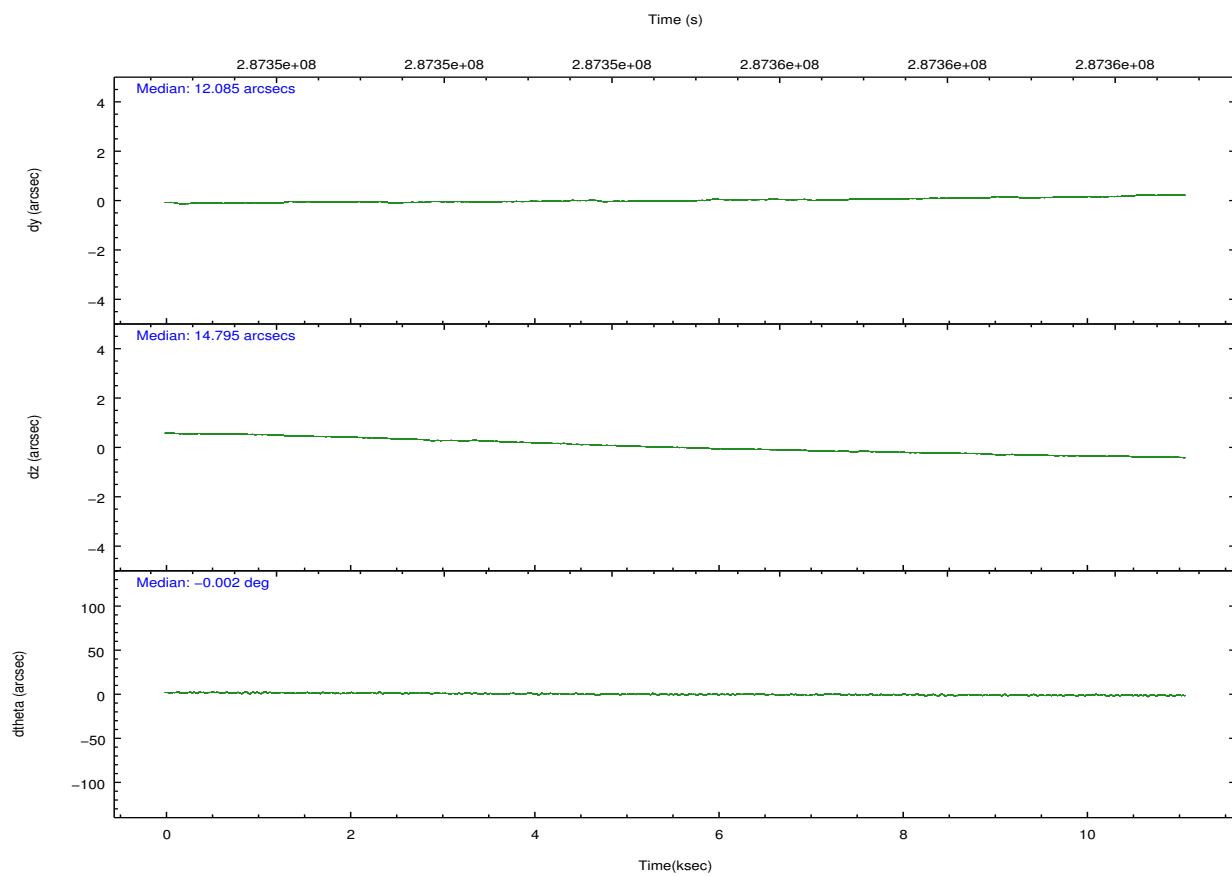
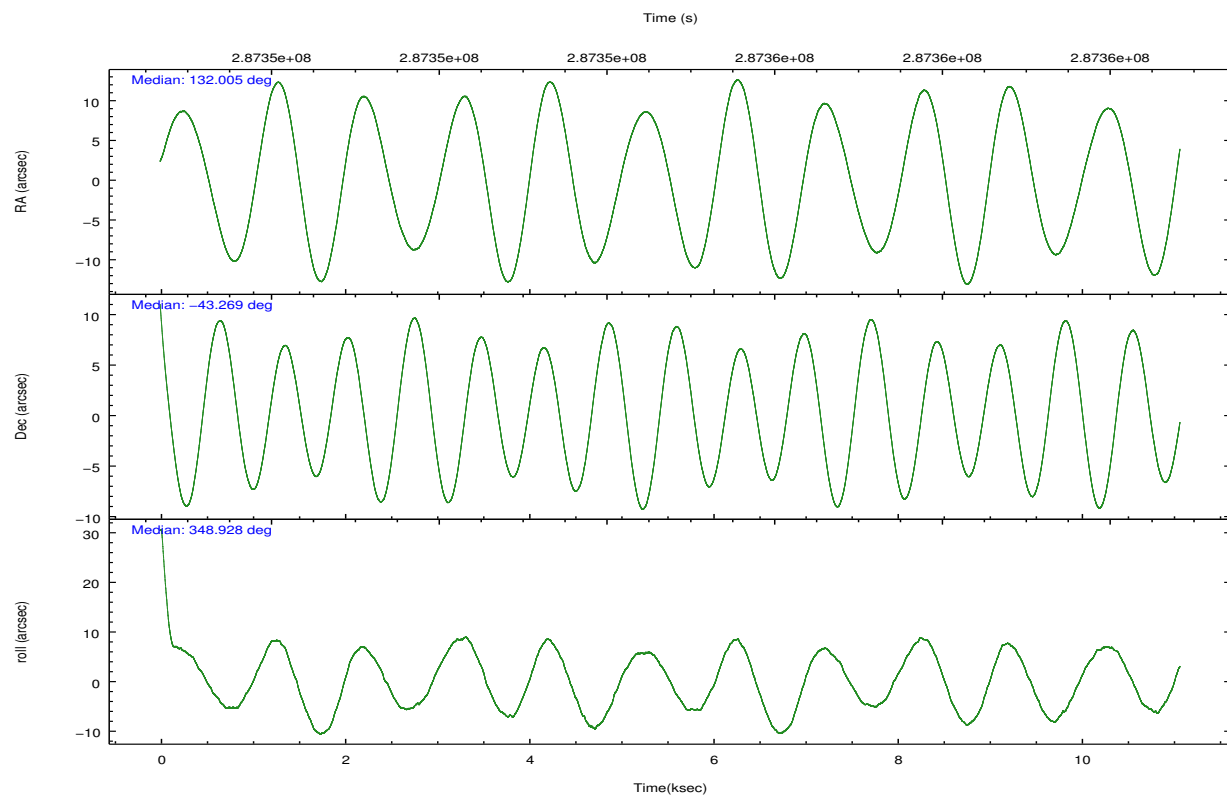


## 2.2 Compared Parameters

Parameter	Planned	Actual	Parameter	Planned	Actual
Instrument	ACIS	ACIS	Obspar format version number	7	7
Detector	ACIS-012367	ACIS-012367	Obspar file type	PREDICTED	ACTUAL
Grating	NONE	NONE	Obspar update status	NONE	UPDATED
Data mode	FAINT	FAINT	CCD I0 on	Y	Y
Observation mode	POINTING	POINTING	CCD I1 on	Y	Y
[deg] Pointing RA	131.969761	132.0054250103862	CCD I2 on	Y	Y
[deg] Pointing Dec	-43.278247	-43.26924532731711	CCD I3 on	Y	Y
[deg] Pointing Roll	348.706200	348.9393609338969	CCD S0 on	N	N
[mm] SIM focus pos	-0.782348	-0.7809083437167272	CCD S1 on	N	N
[mm] SIM defocus	0	0.001439871863259334	CCD S2 on	O1	Y
[mm] SIM translation stage pos	-233.592463	-233.5874344608287	CCD S3 on	O2	Y
[mm] SIM translation stage offset	0	-0.005018542100998502	CCD S4 on	N	N
[s] Observation start time (MET)	287349476.184000	287348425.52648	CCD S5 on	N	N
Observation start date	2007-02-08T19:16:51	2007-02-08T19:00:25	Number of optional ACIS chips dropped	0	0
[s] Observation end time (MET)	287360276.184000	287361557.8271	On-chip summing requested	N	N
Observation end date	2007-02-08T22:16:51	2007-02-08T22:39:17	Subarray requested	NONE	NONE
Read mode	TIMED	TIMED	Alternating exposures requested	N	N
			[s] Primary exposure time	0.000000	3.2

## 2.3 Aspect



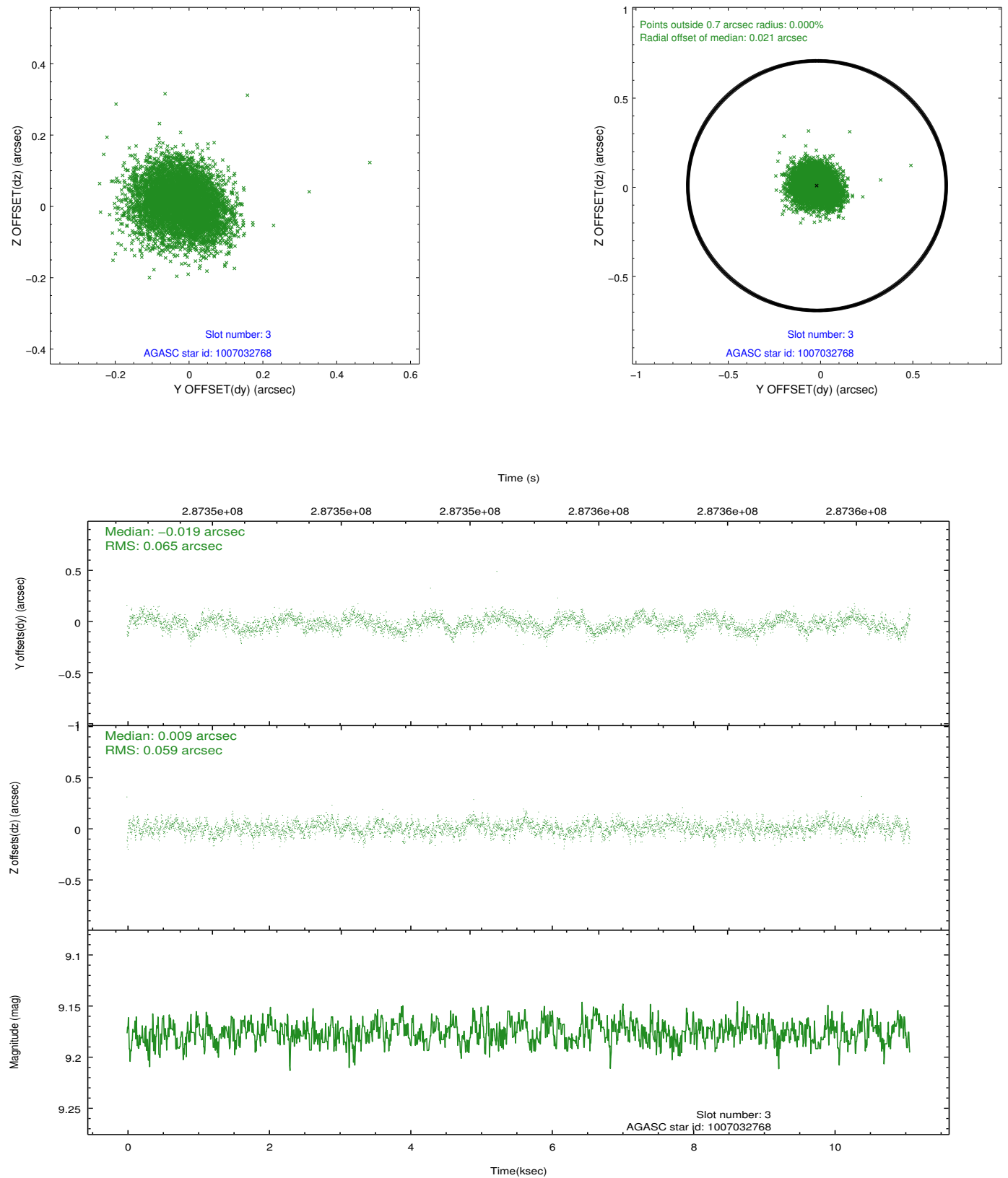


### Slot Statistics

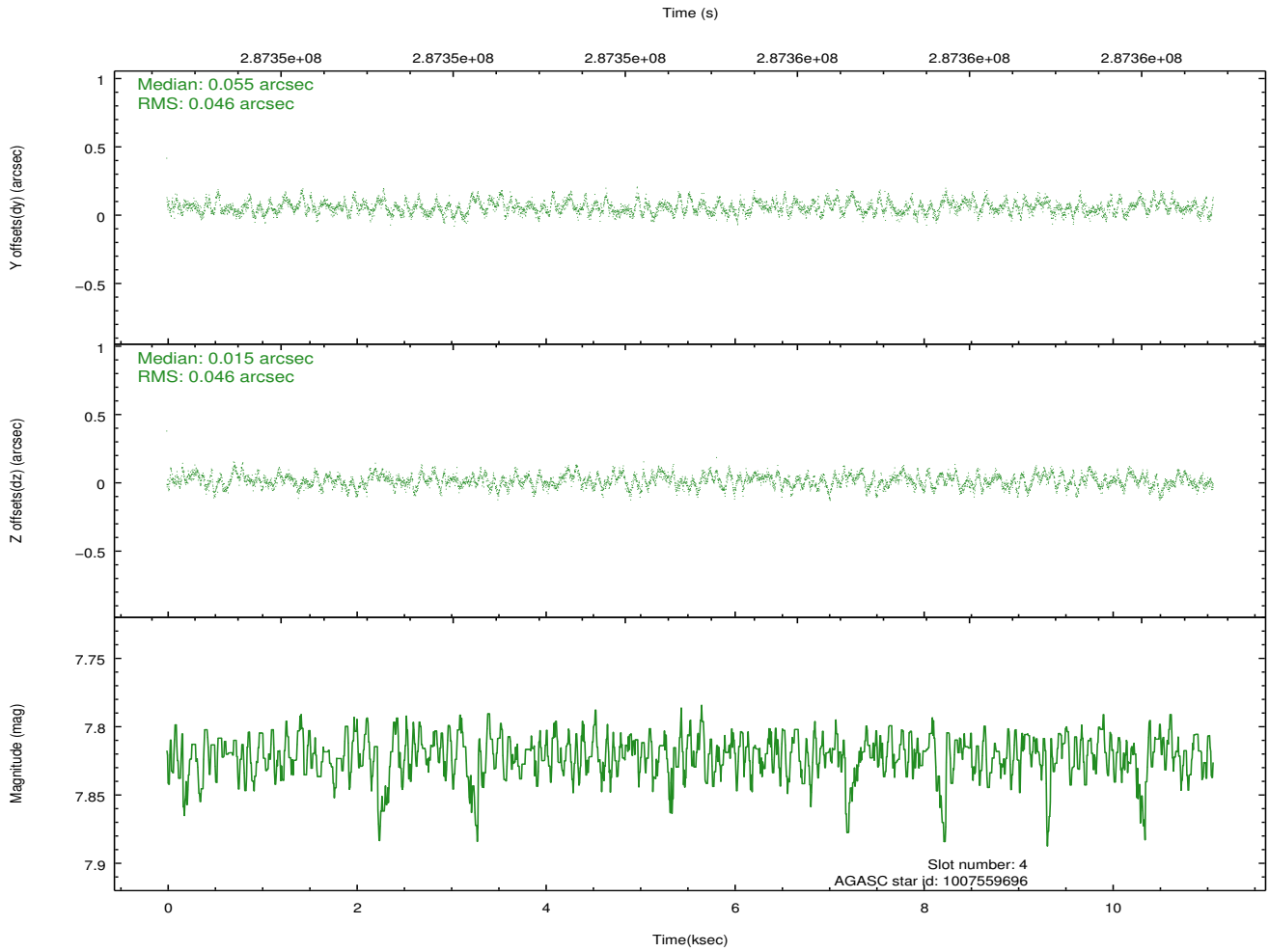
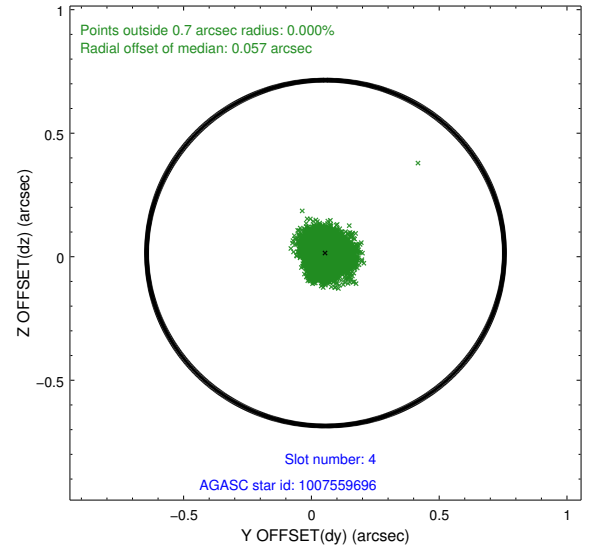
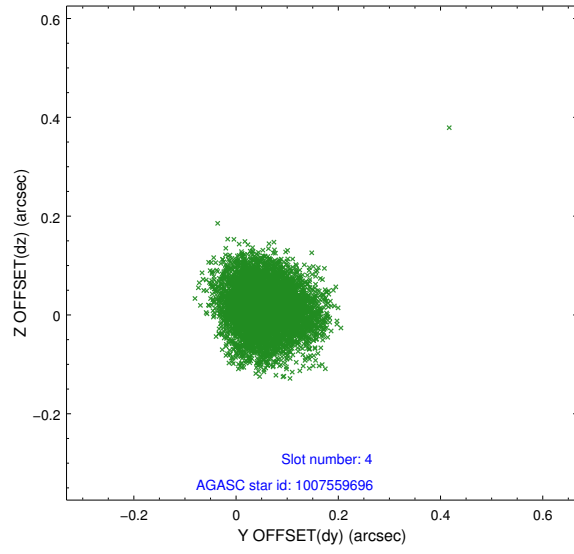
slot	status	id	mag	n_pts	med_dy	med_dz	dr1	dr2	ra	dec	mean_y	mean_z
0	FID	ACIS-I-1	7.23	2699	0.030	-0.016	0.013	0.022	0.000000	0.000000	927.47	-838.45
1	FID	ACIS-I-5	7.23	2702	-0.195	0.036	0.007	0.012	0.000000	0.000000	-1820.62	1058.85
2	FID	ACIS-I-6	7.24	2701	0.074	0.051	0.013	0.020	0.000000	0.000000	392.54	1703.90
3	GUIDE	1007032768	9.18	5395	-0.019	0.009	0.093	0.148	132.219147	-43.019810	461.84	1040.39
4	GUIDE	1007559696	7.82	5403	0.055	0.015	0.070	0.110	132.264009	-43.761215	1091.79	-1555.75
5	GUIDE	1007563040	9.29	5397	0.028	0.110	0.092	0.146	131.193888	-43.637624	-1726.24	-1673.98
6	GUIDE	1007564048	8.73	5402	-0.064	0.064	0.090	0.146	131.689095	-43.845598	-313.94	-2146.82
7	GUIDE	1007027416	9.09	5401	-0.002	-0.190	0.091	0.145	131.808281	-42.638705	-870.32	2173.19

## 2.4 Star Slots

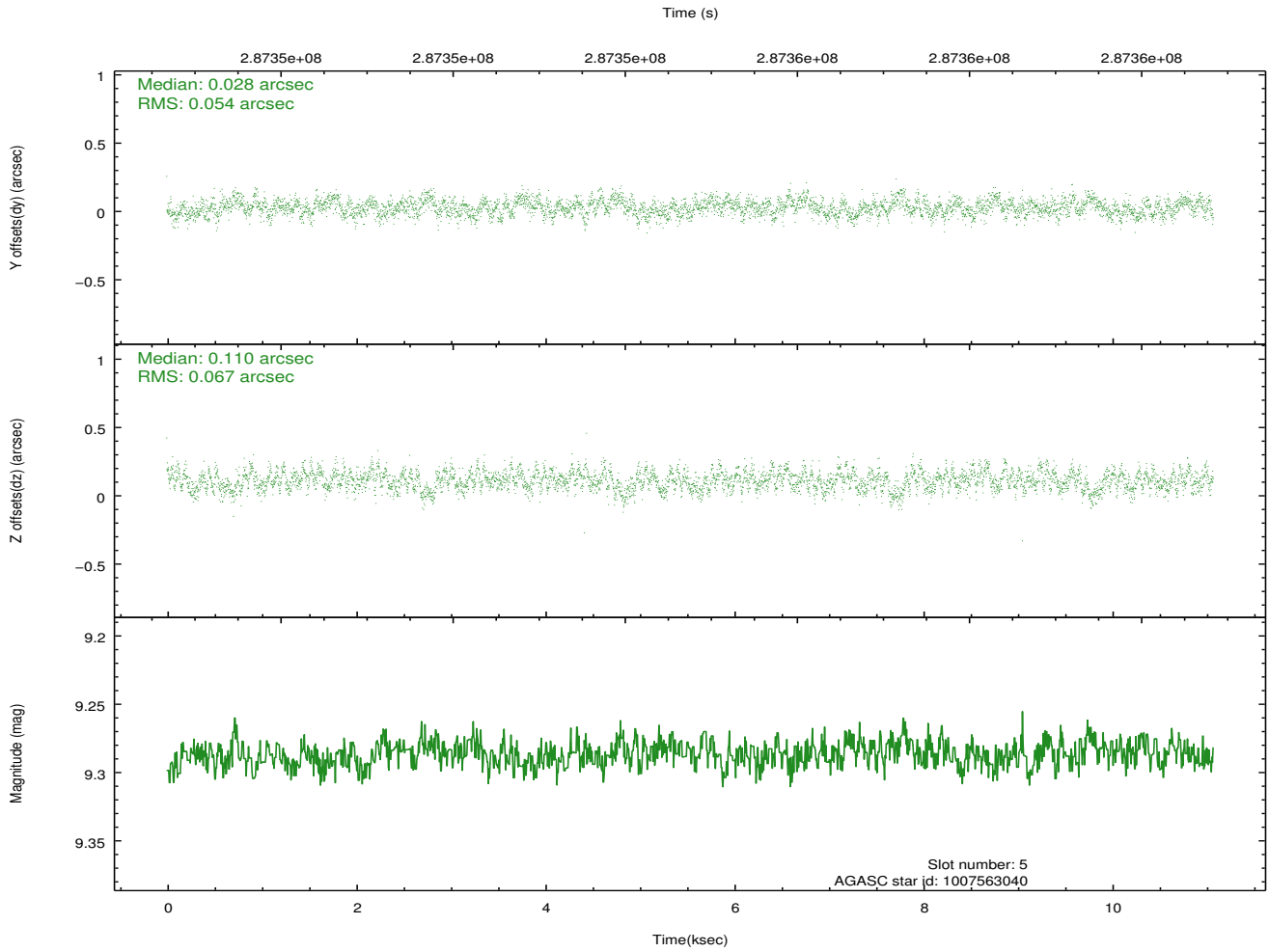
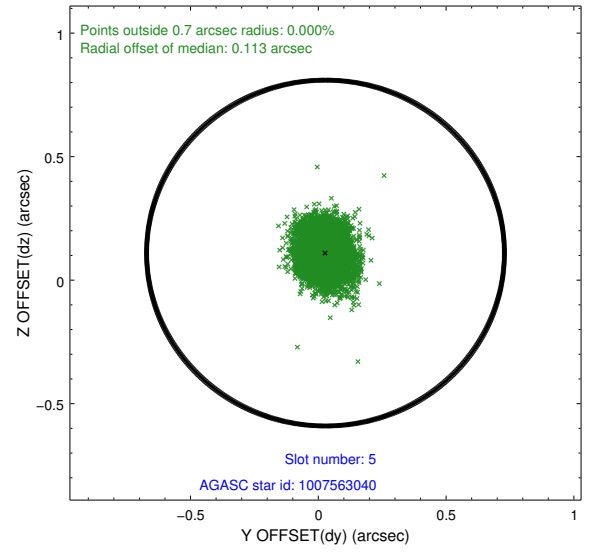
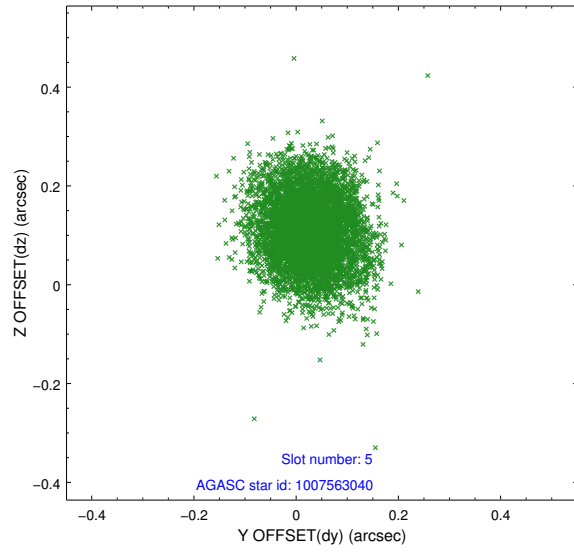
### 2.4.1 Slot 3



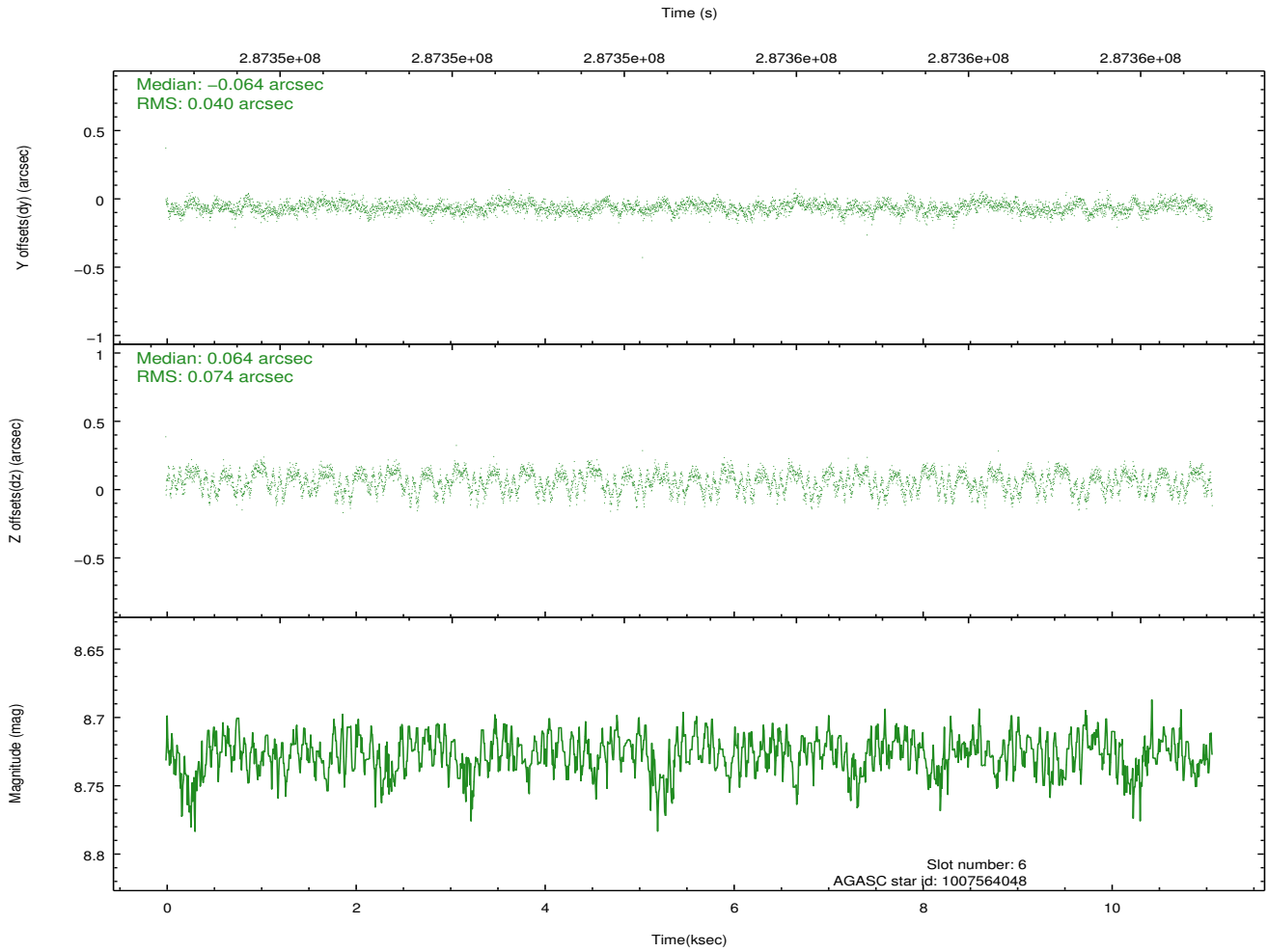
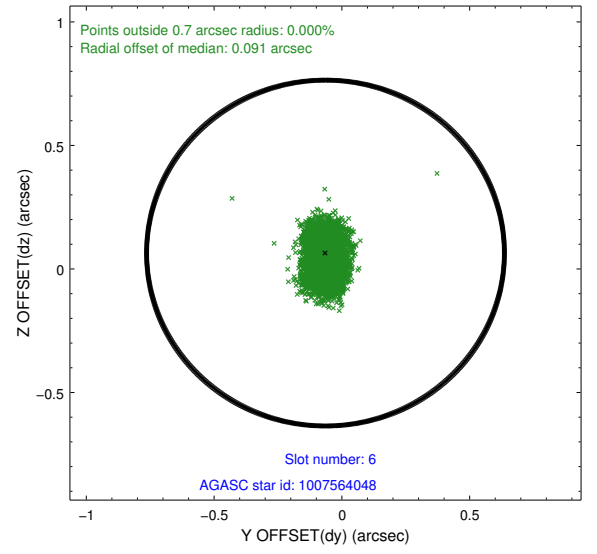
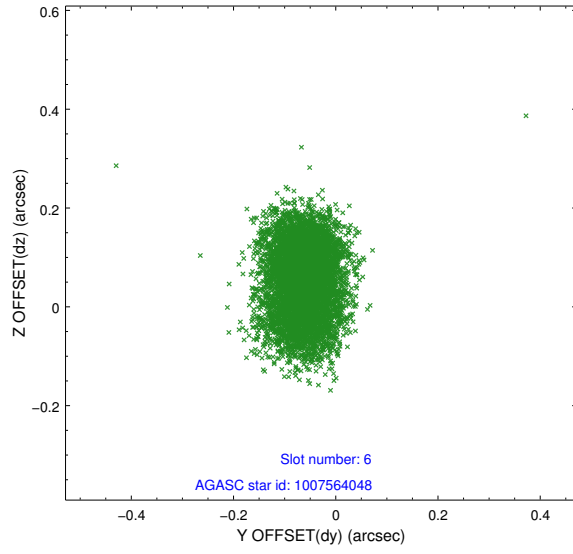
## 2.4.2 Slot 4



### 2.4.3 Slot 5

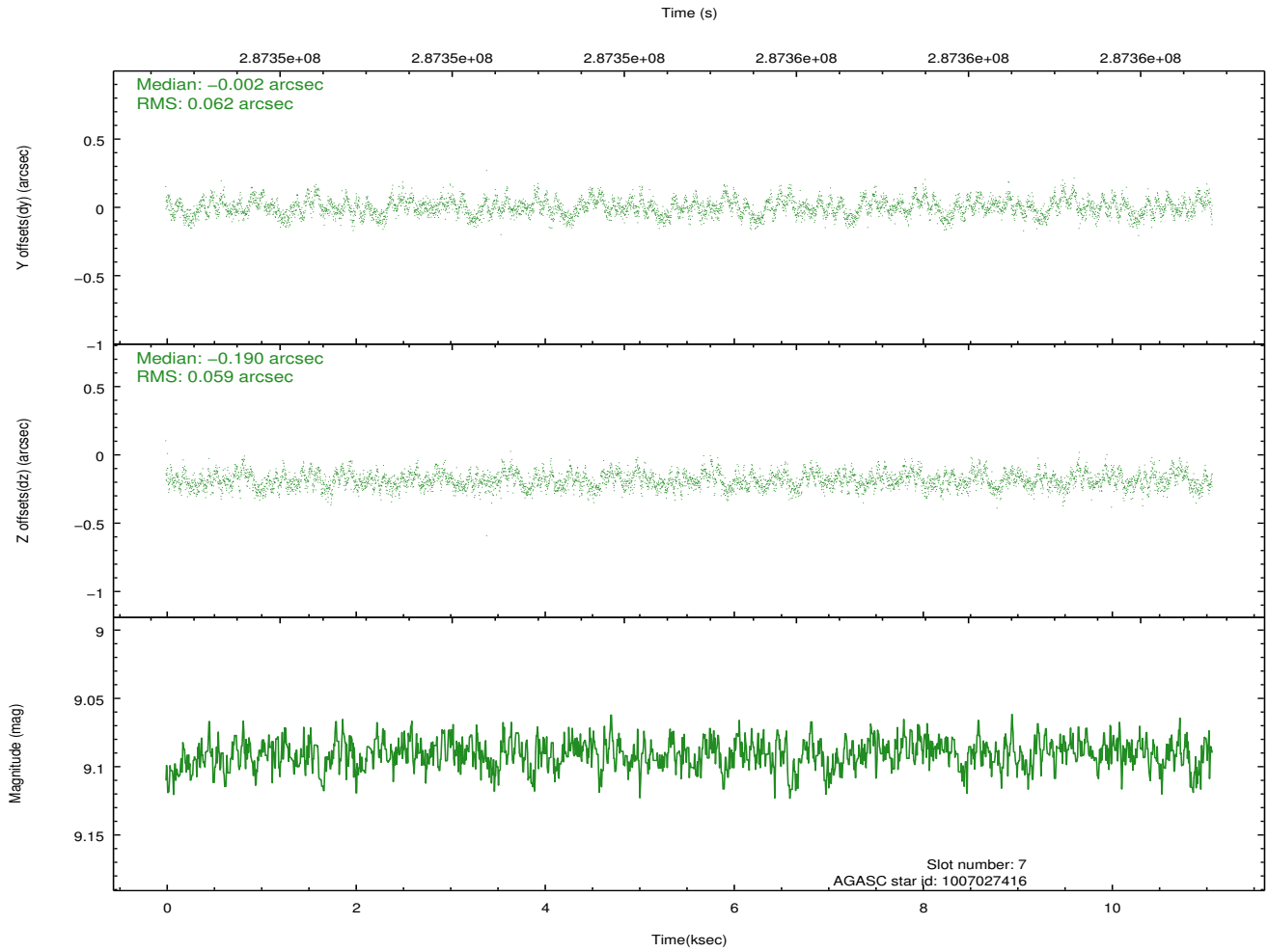
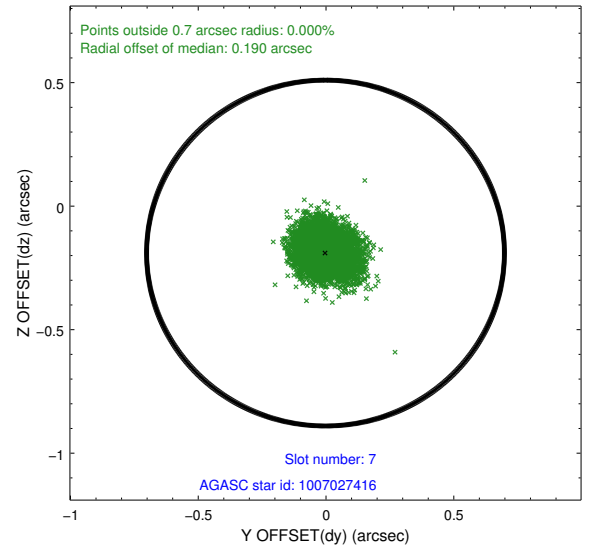
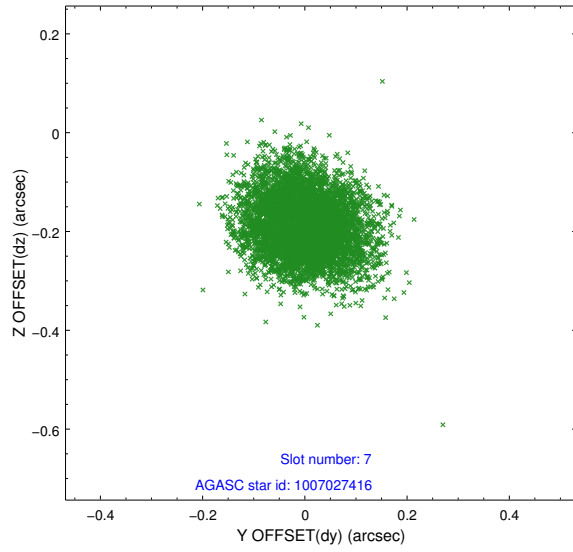


## 2.4.4 Slot 6



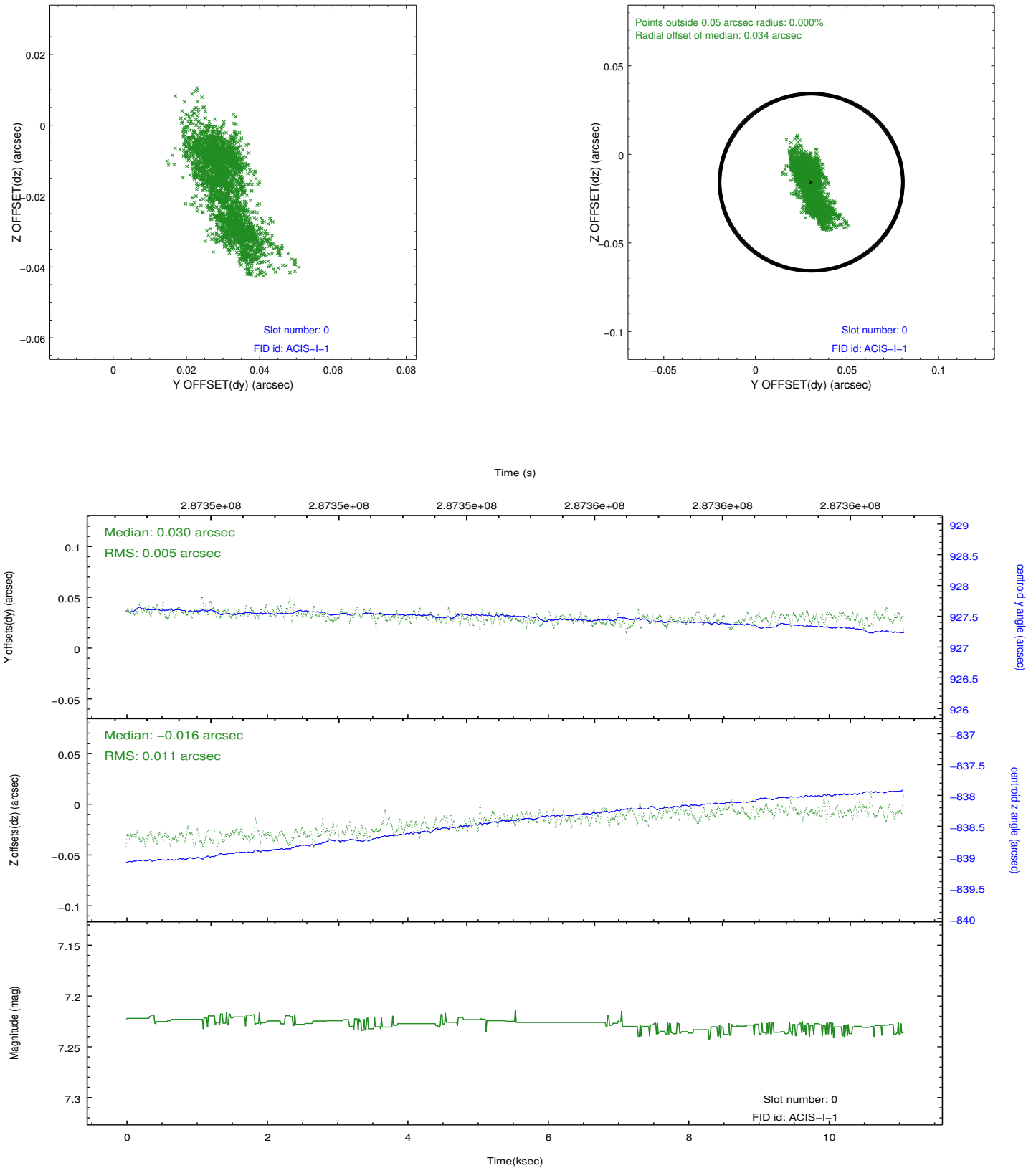


## 2.4.5 Slot 7

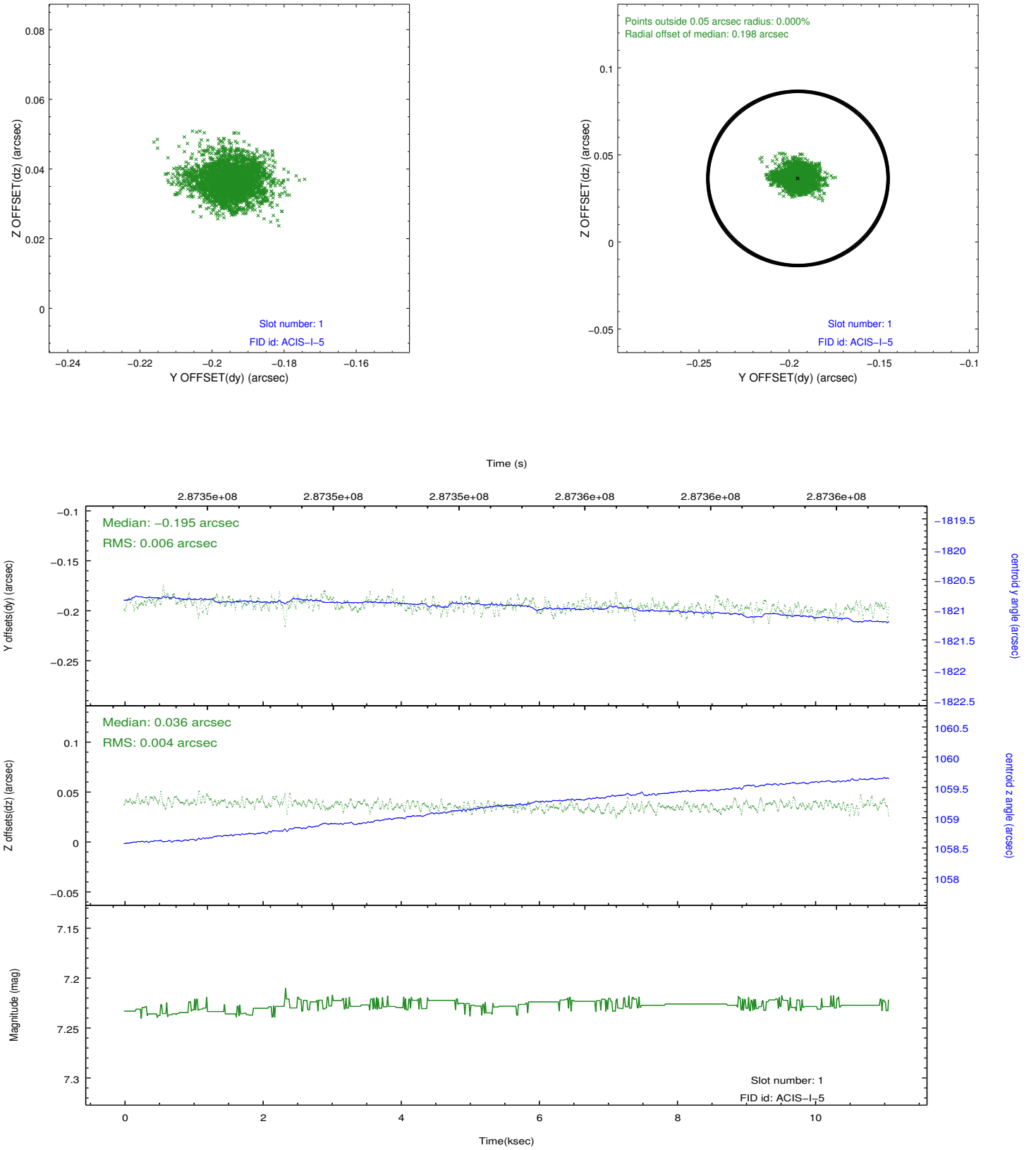


## 2.5 FID Slots

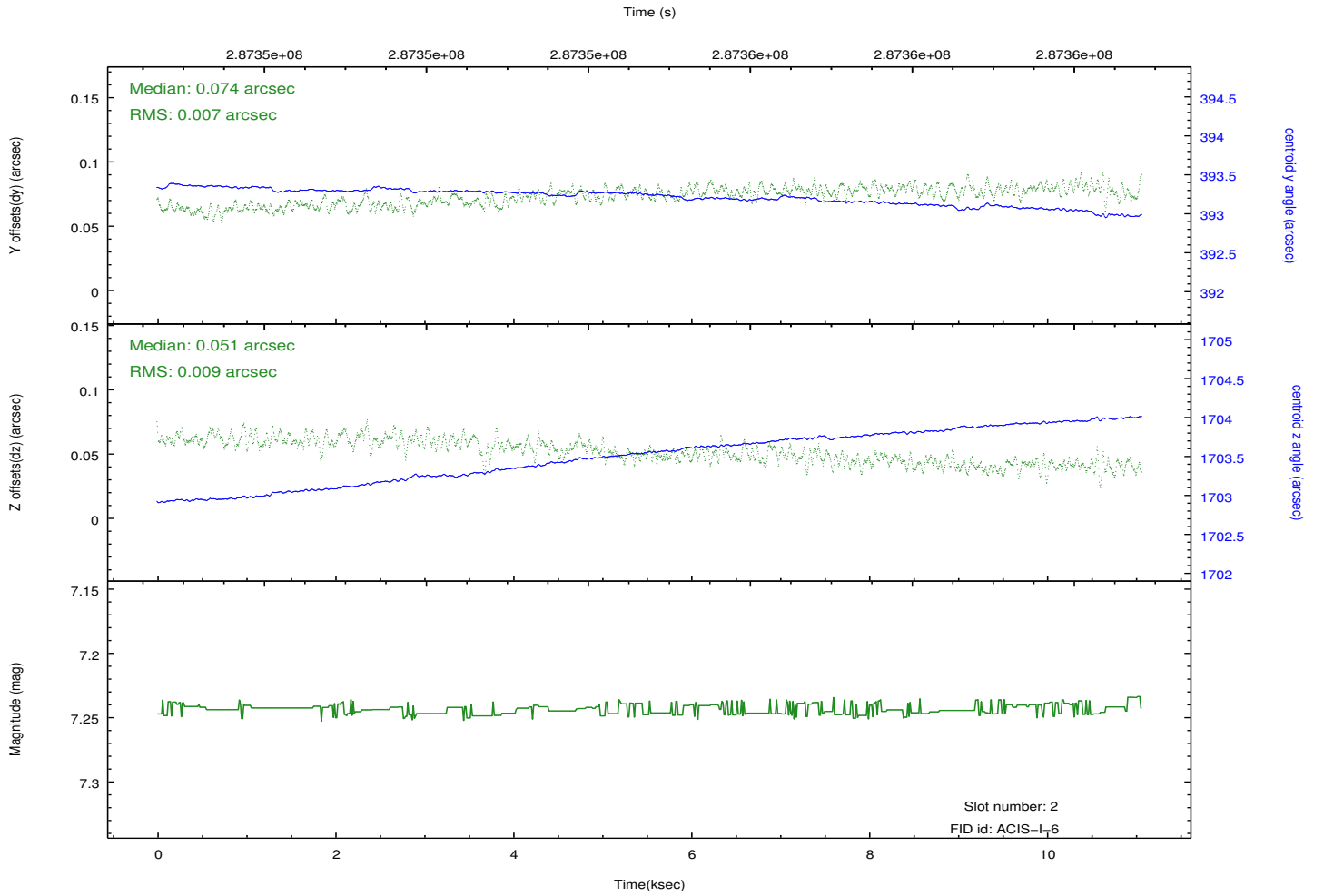
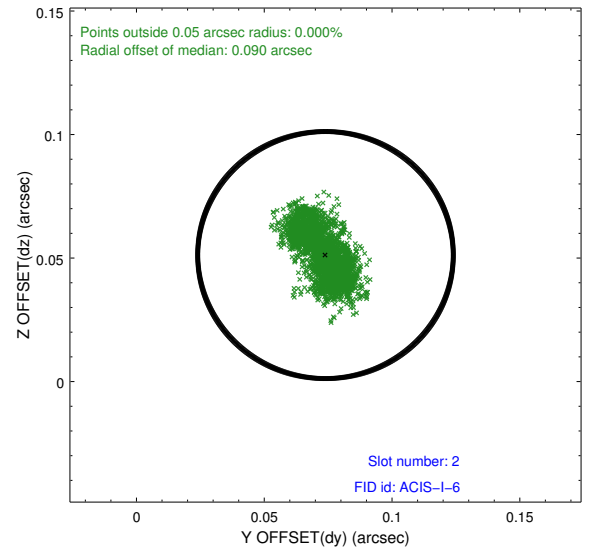
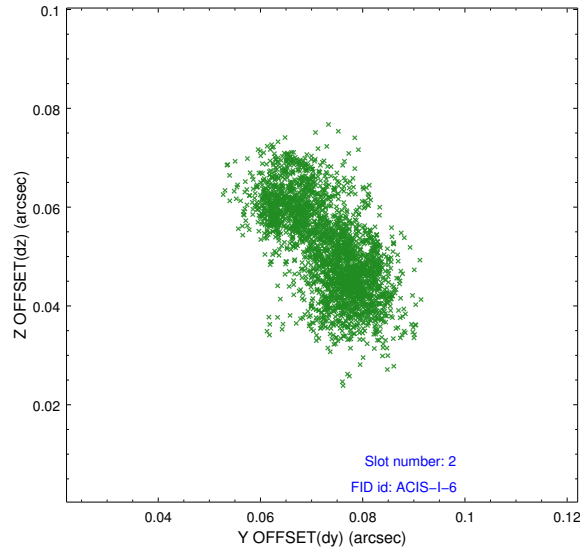
### 2.5.1 Slot 0



## 2.5.2 Slot 1



### 2.5.3 Slot 2



## A Summary

### A.1 Status

V&V Scientist	Beth Sundheim
V&V Date (YYYY-MM-DD)	2012.04.20
V&V Edition	1
V&V Disposition and Status	OK
V&V Charge Time	10.8447999

### A.2 Comments