

V&V Reference Report

L2 ASCDS Version : 8.4.3

Observation 7296 - L2 Version 3
Chandra X-Ray Center

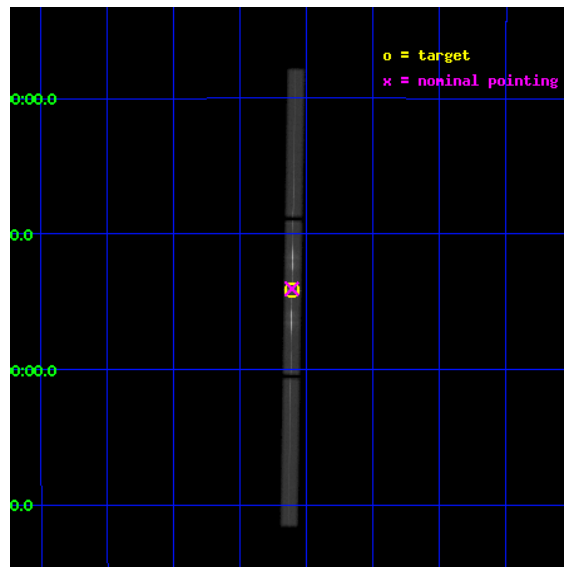
L2 Processing Date : Aug 11 2012

Contents

1	Front	2
2	OBI	3
2.1	OBI	3
2.1.1	Images	3
2.1.2	Parameters	4
2.1.3	Events	4
2.2	Compared Parameters	5
2.3	Aspect	6
2.4	Star Slots	9
2.4.1	Slot 3	9
2.4.2	Slot 4	10
2.4.3	Slot 5	11
2.4.4	Slot 6	12
2.4.5	Slot 7	13
2.5	FID Slots	14
2.5.1	Slot 0	14
2.5.2	Slot 1	15
2.5.3	Slot 2	16
3	Gratings	17
3.1	LETG Arm	17
A	Summary	19
A.1	Status	19
A.2	Comments	19

1 Front

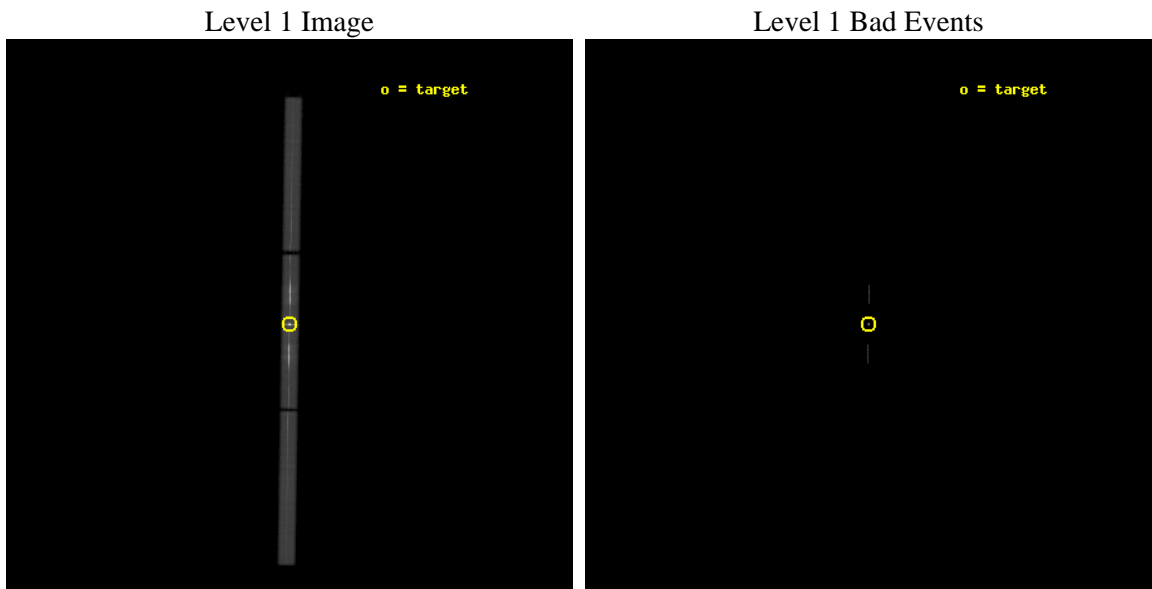
seq_num	300177	Sequence number
obs_id	7296	Observation id
title	CHANDRA Observations of RS Oph a Recurrent Symbiotic Nova in Outburst	Proposal title
observer	Regents' Professor Sumner Starrfield	Principal investigator
object	RS Oph	Source name
ra_targ	267.555	Observer's specified target RA [deg]
dec_targ	-6.707917	Observer's specified target Dec [deg]
ra_nom	267.55503716077	Nominal RA [deg]
dec_nom	-6.7030642145639	Nominal Dec [deg]
roll_nom	90.812059696003	Nominal Roll [deg]
revision	3	Processing version of data
ontime	10152.881722778	[s]
livetime	9856.9082756532	Ontime multiplied by DTCOR
l2events	1458658	Number of level 2 events



2 OBI

2.1 OBI

2.1.1 Images



2.1.2 Parameters

obi_num	2	Obi number	sched_exp_time	10000.000000	[s] Scheduled observation exposure time
ascdsver	8.4.5	Processing system revision	ontime	10152.881722778	[s]
caldsver	4.5.1.1	 	l1events	1771926	Number of level 1 events
date	2012-08-11T05:53:55	Date and time of file creation			
revision	3	Processing version of data			

2.1.3 Events

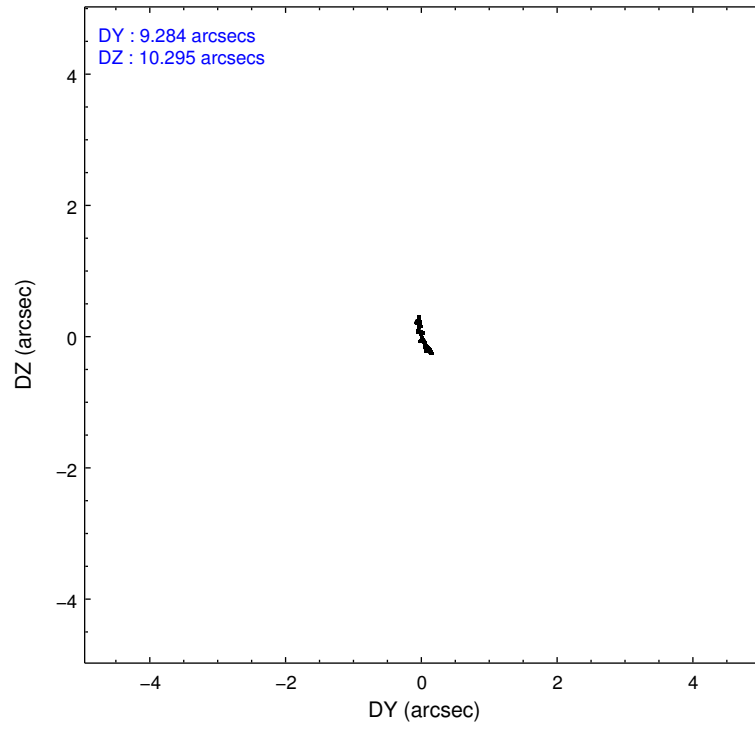
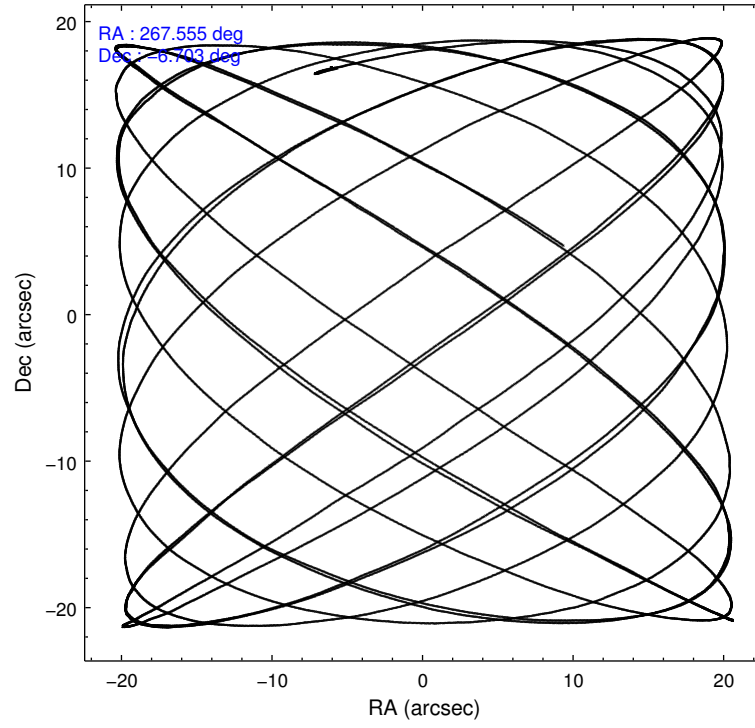
Level 1 Events

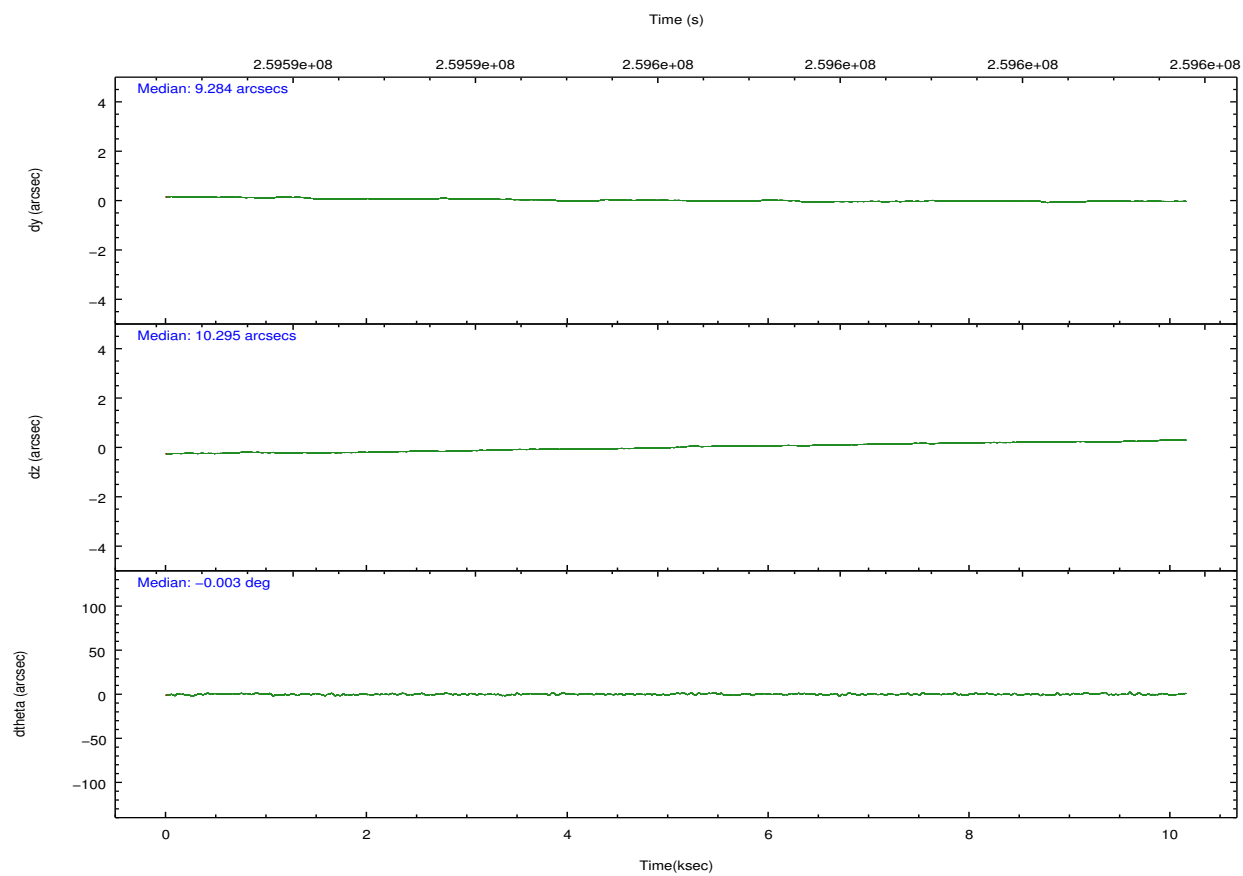
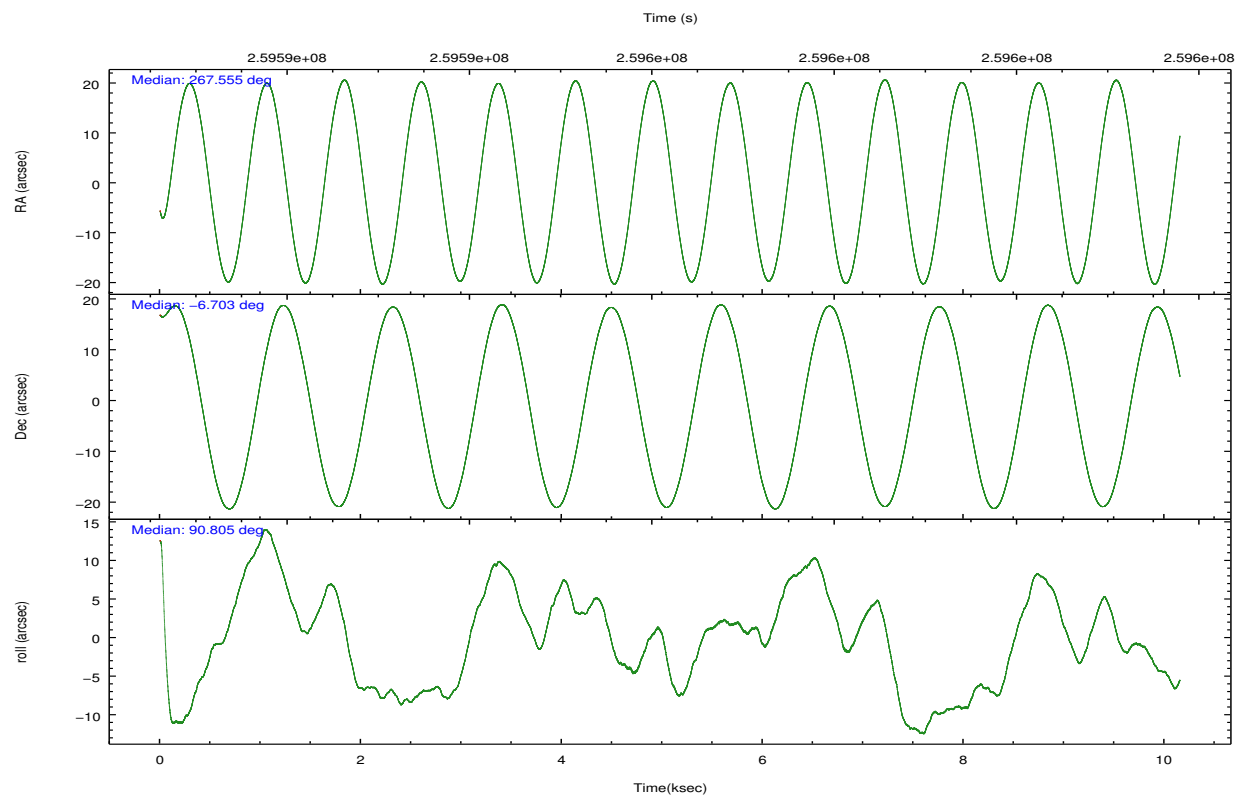
	segment 1	segment 2	segment 3
level 1 events	361097	1047664	363165
rejected events	22770	30277	23237
rejected %	6%	2%	6%

2.2 Compared Parameters

Parameter	Planned	Actual	Parameter	Planned	Actual
Instrument	HRC	HRC	Obspar format version number	7	7
Detector	HRC-S	HRC-S	Obspar file type	PREDICTED	ACTUAL
Grating	LETG	LETG	Obspar update status	NONE	UPDATED
Data mode	OBSERVING	OBSERVING			
Observation mode	POINTING	POINTING			
[deg] Pointing RA	267.571032	267.5550371607684			
[deg] Pointing Dec	-6.727044	-6.703064214563874			
[deg] Pointing Roll	90.746560	90.8120596960031			
[mm] SIM focus pos	-1.429586	-1.428180813131781			
[mm] SIM defocus	0.1037507710433287	0.1051558262725154			
[mm] SIM translation stage pos	250.455976	250.466033080201			
[mm] SIM translation stage offset	0	-0.01005468664627074			
[s] Observation start time (MET)	259591280.184000	259590322.85946			
Observation start date	2006-03-24T12:40:15	2006-03-24T12:25:22			
[s] Observation end time (MET)	259601280.184000	259601900.74749			
Observation end date	2006-03-24T15:26:55	2006-03-24T15:38:20			

2.3 Aspect



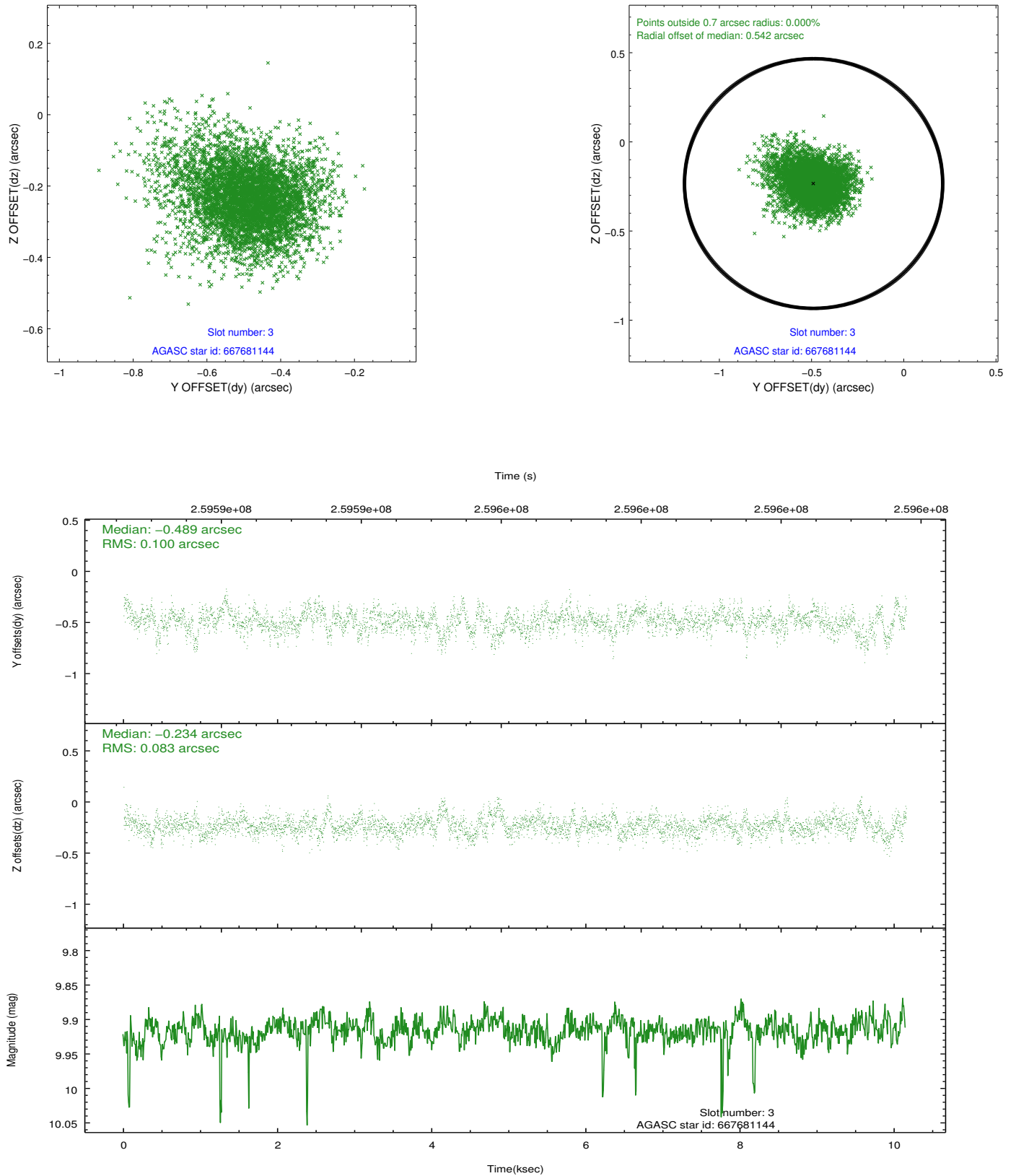


Slot Statistics

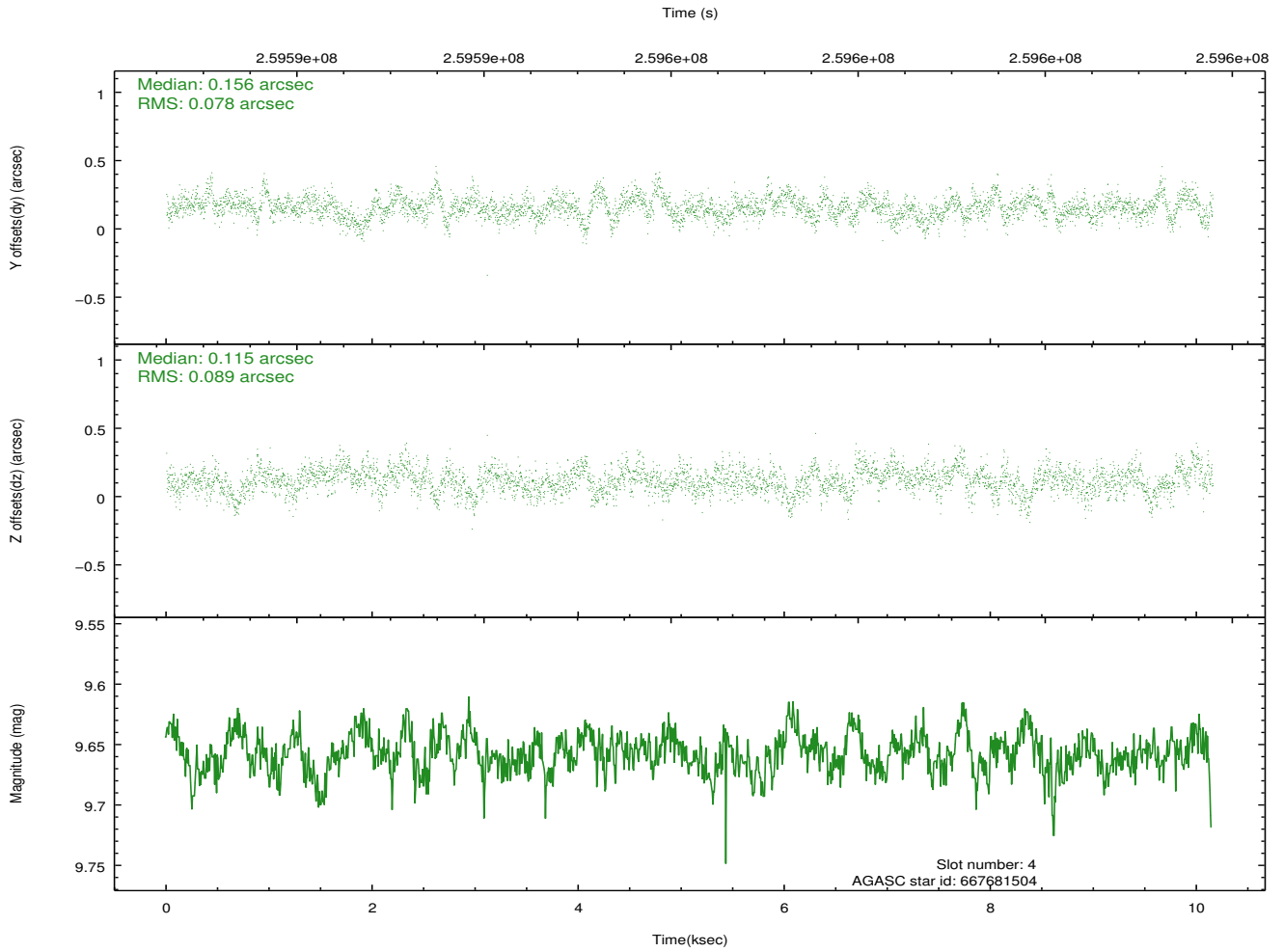
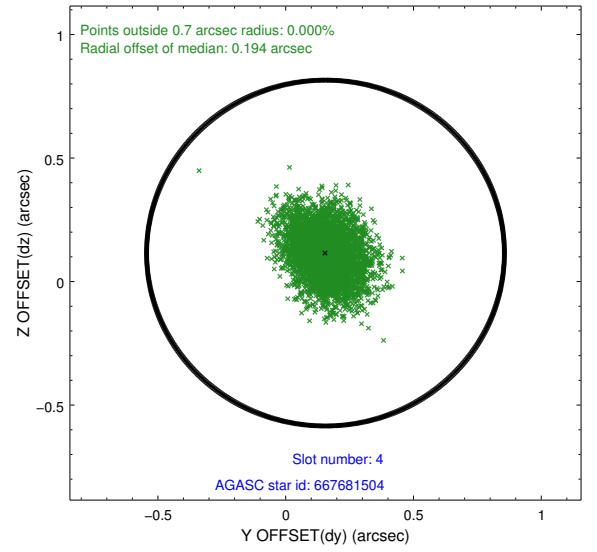
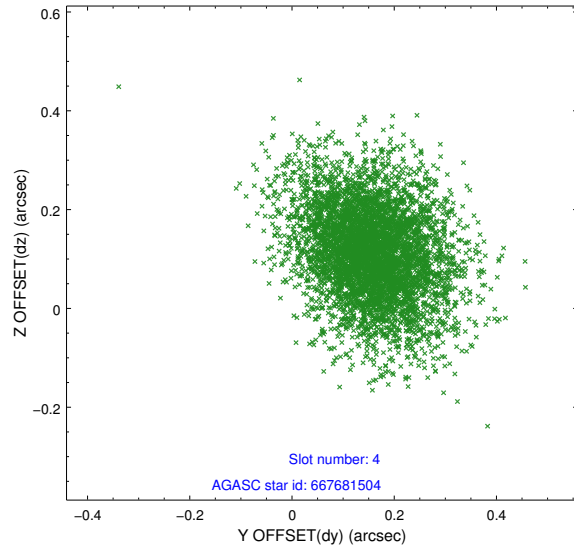
slot	status	id	mag	n_pts	med_dy	med_dz	dr1	dr2	ra	dec	mean_y	mean_z
0	FID	HRC-S-1	7.04	2476	0.150	-0.204	0.008	0.014	0.000000	0.000000	-1163.50	-459.03
1	FID	HRC-S-2	7.02	2477	0.138	-0.112	0.005	0.009	0.000000	0.000000	1235.70	-451.79
2	FID	HRC-S-3	7.04	2477	0.102	0.015	0.009	0.015	0.000000	0.000000	-1165.76	570.54
3	GUIDE	667681144	9.92	4932	-0.489	-0.234	0.135	0.235	267.013326	-6.291734	1590.80	1975.10
4	GUIDE	667681504	9.66	4940	0.156	0.115	0.124	0.213	267.752861	-6.895149	-613.83	-641.89
5	GUIDE	667682280	9.89	4936	0.161	0.161	0.147	0.254	267.851940	-6.884807	-581.48	-996.55
6	GUIDE	667683168	9.36	4924	0.185	0.270	0.108	0.175	267.624316	-7.281951	-2000.42	-164.38
7	GUIDE	667683800	8.86	4952	-0.000	-0.304	0.100	0.159	266.906535	-6.565778	608.82	2368.48

2.4 Star Slots

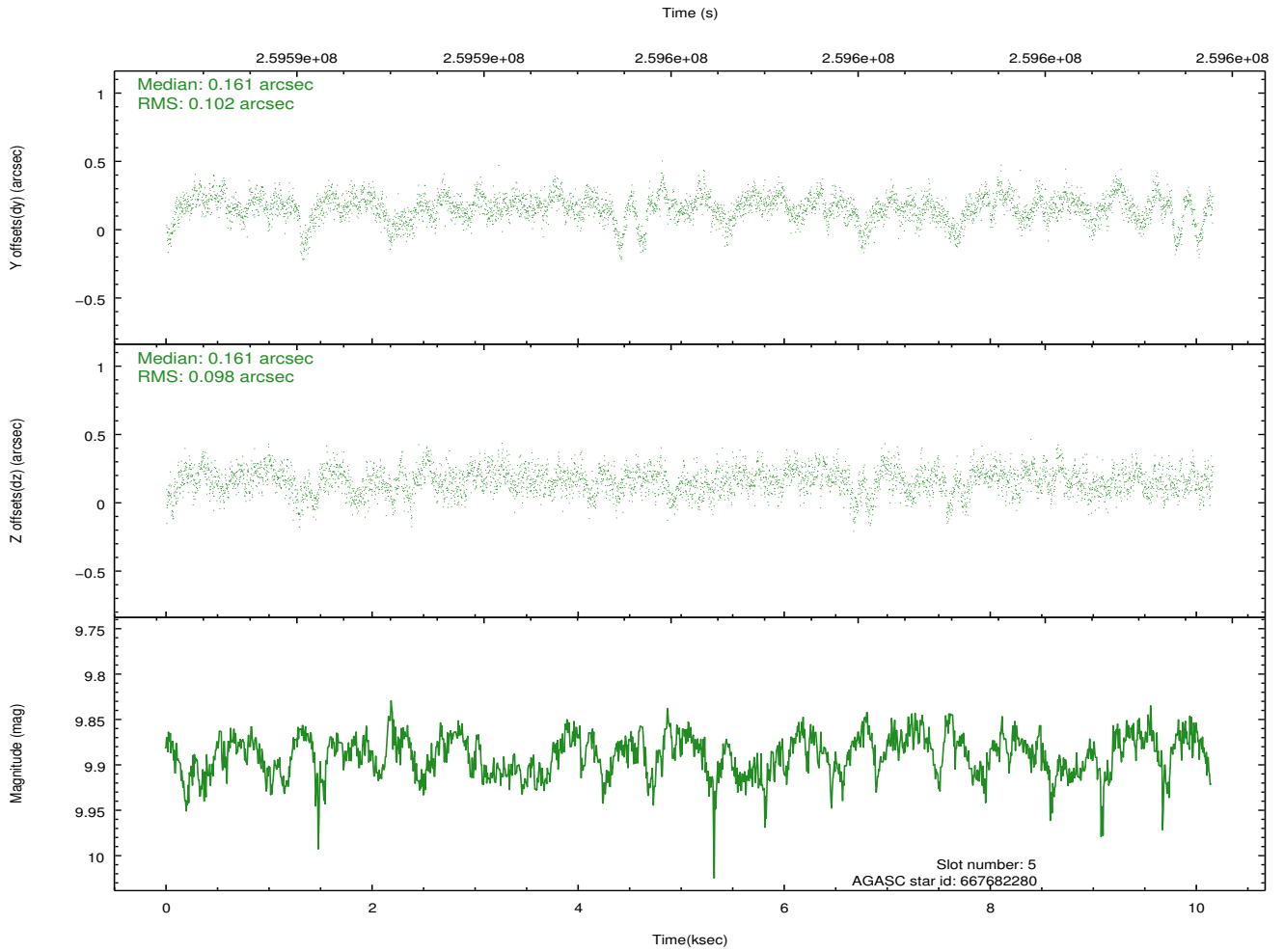
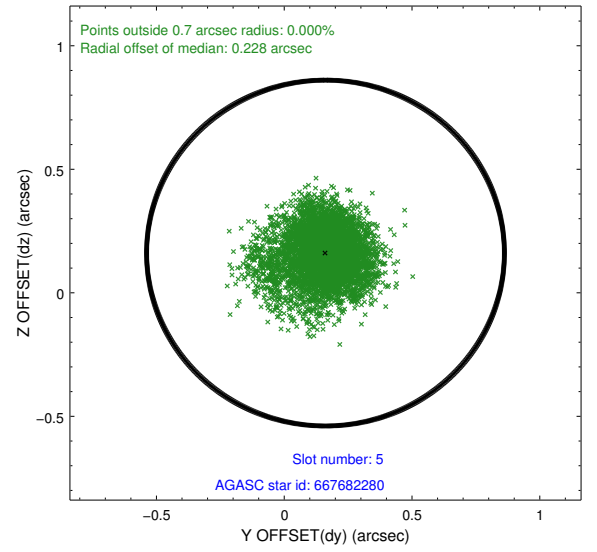
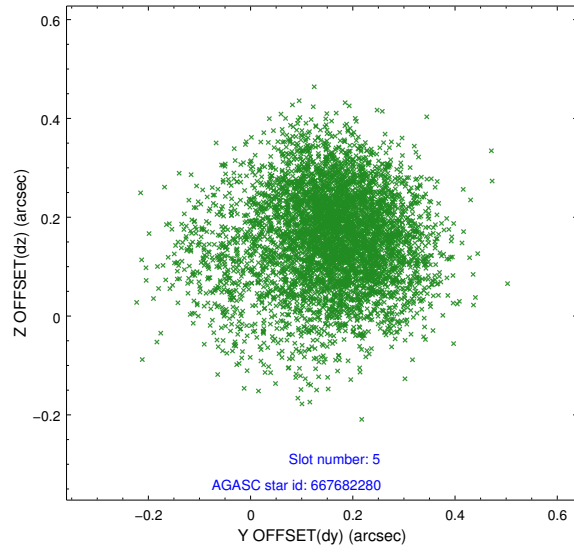
2.4.1 Slot 3



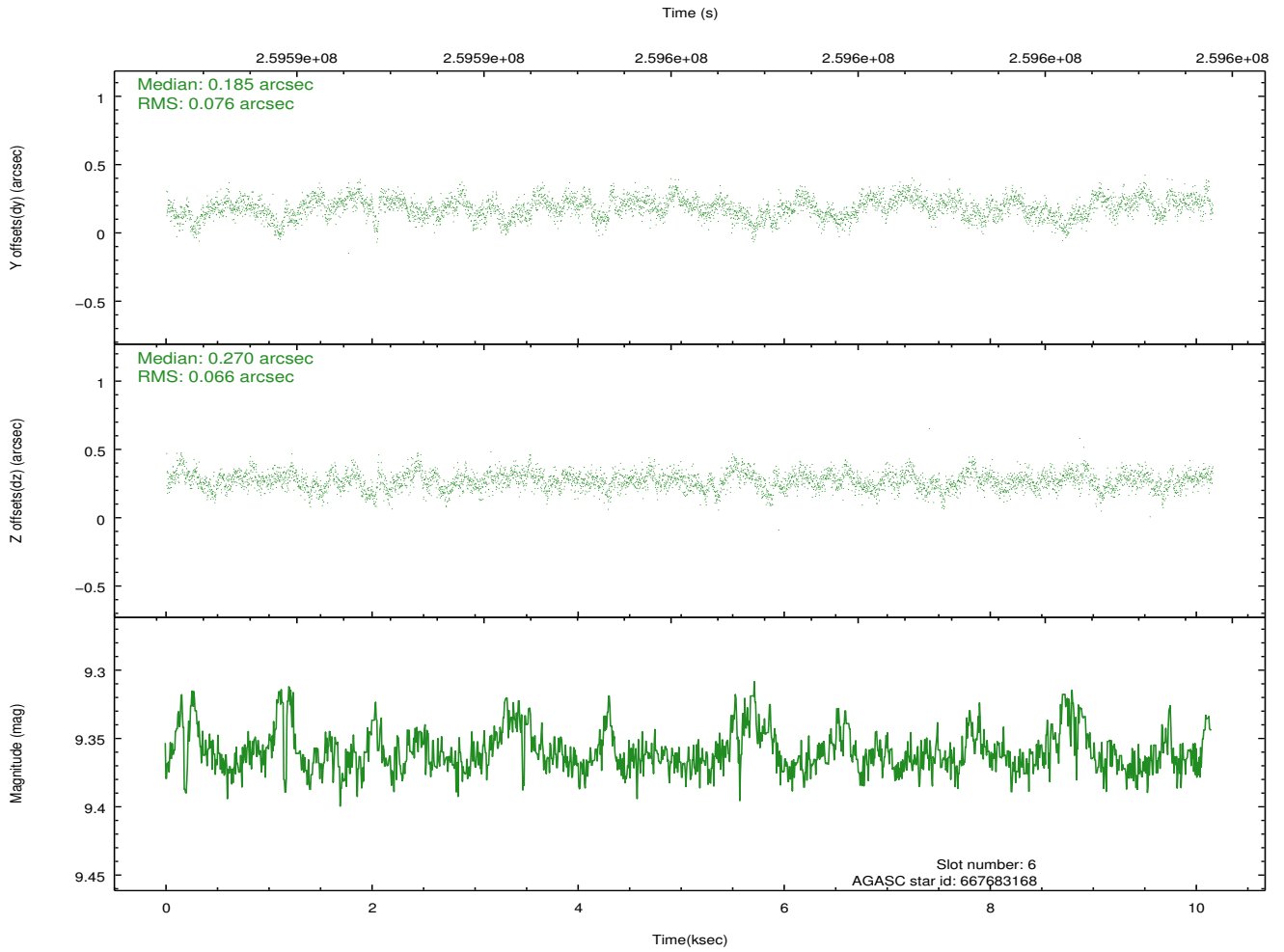
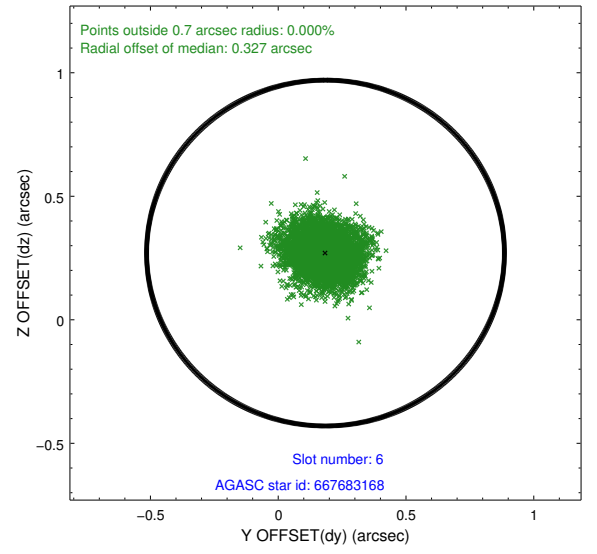
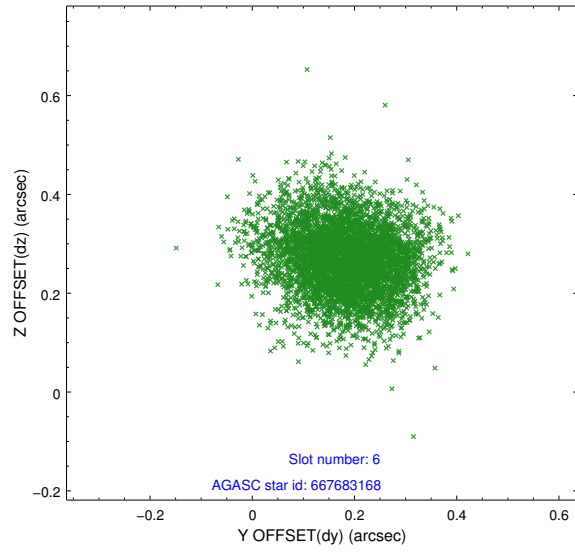
2.4.2 Slot 4



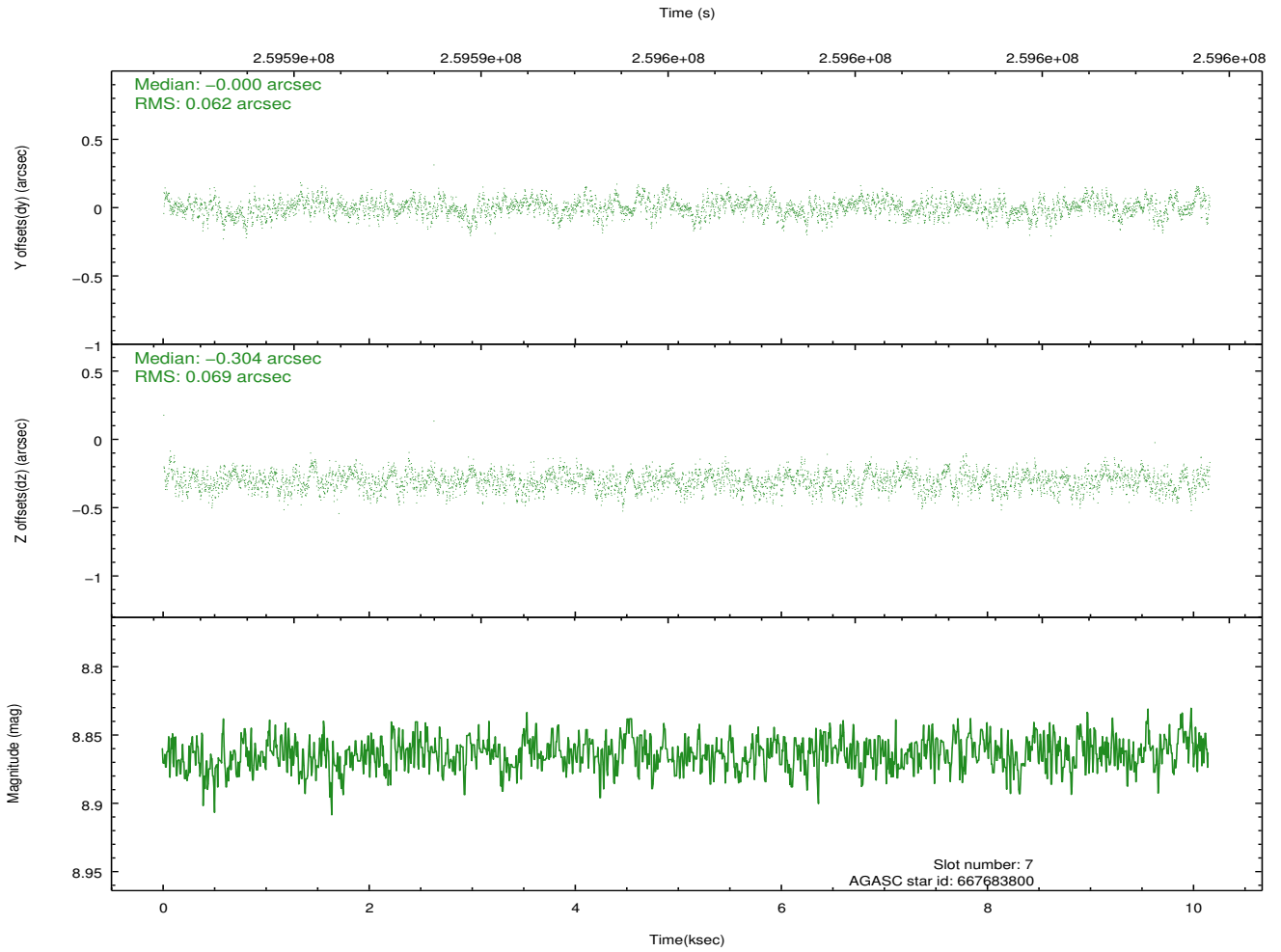
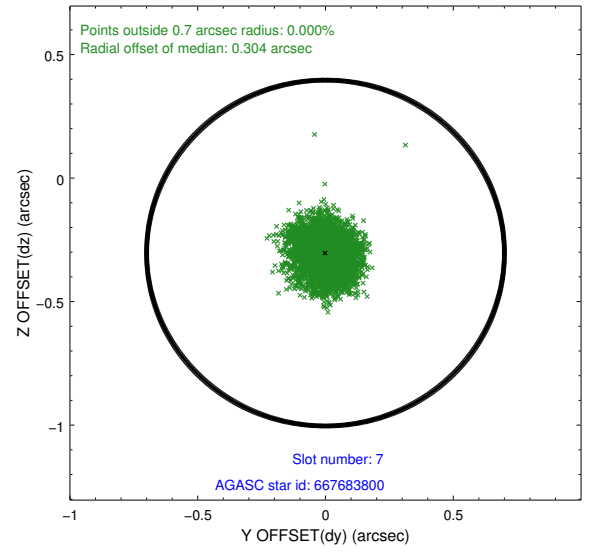
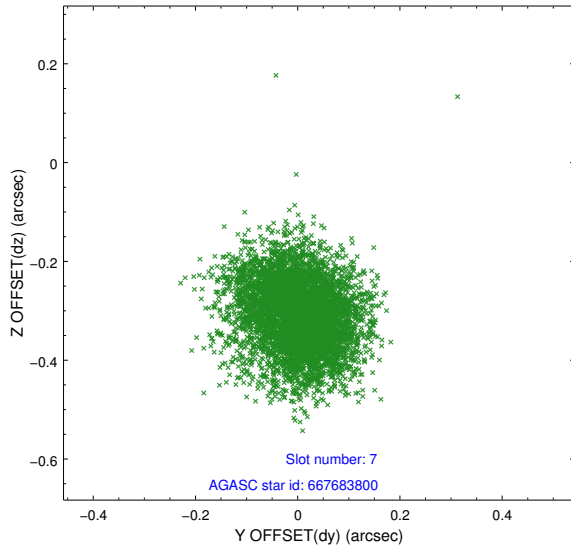
2.4.3 Slot 5



2.4.4 Slot 6

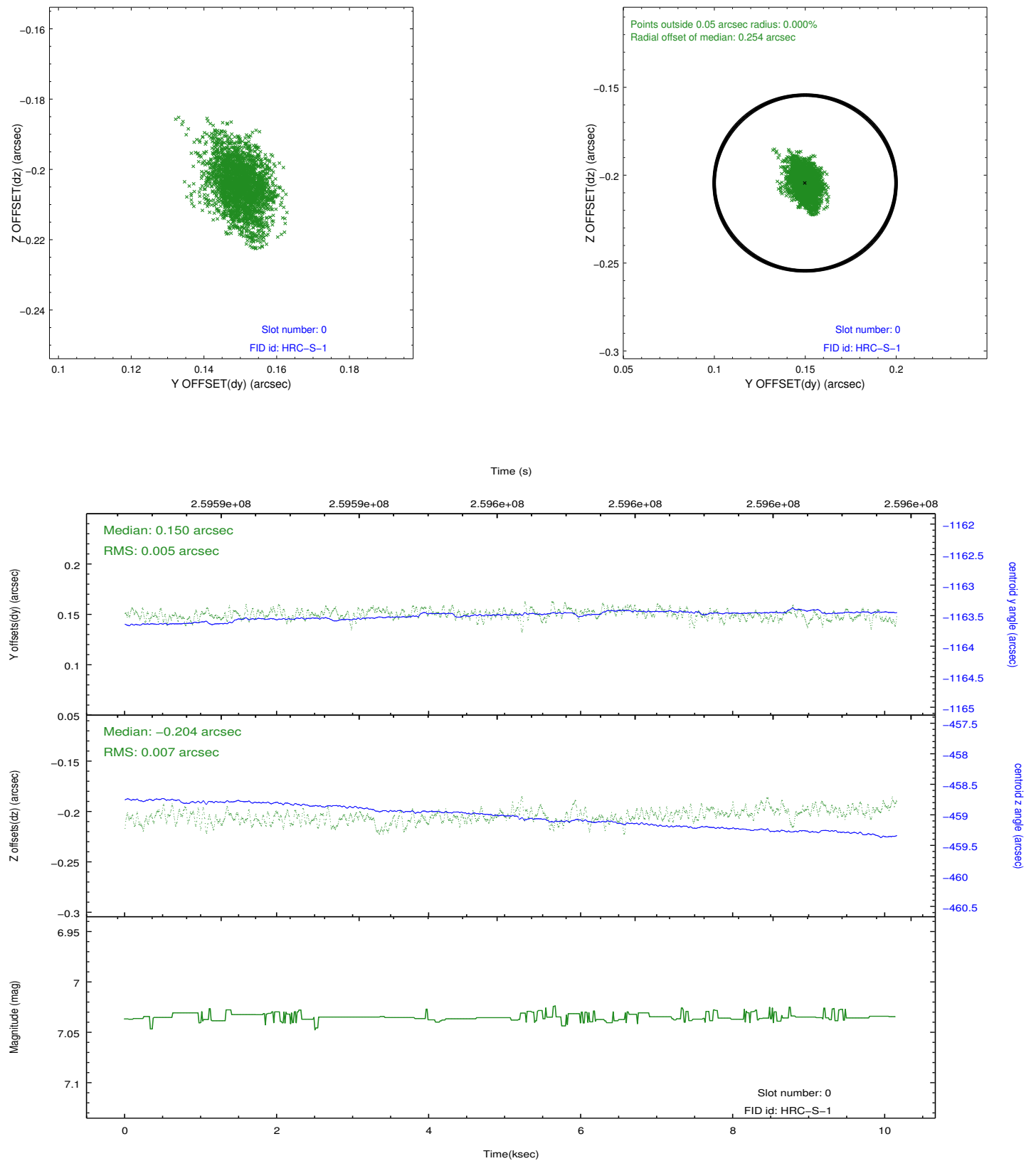


2.4.5 Slot 7

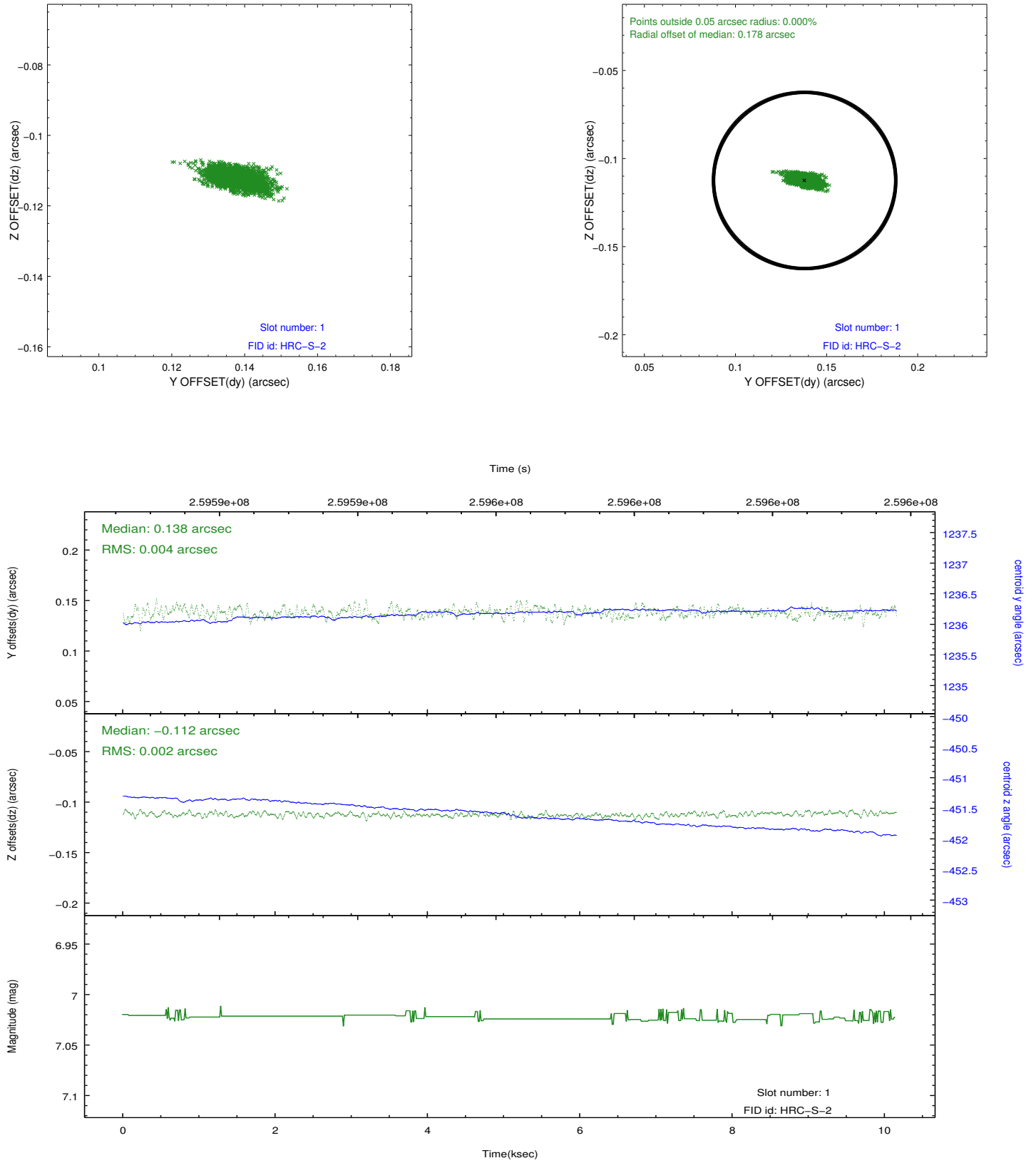


2.5 FID Slots

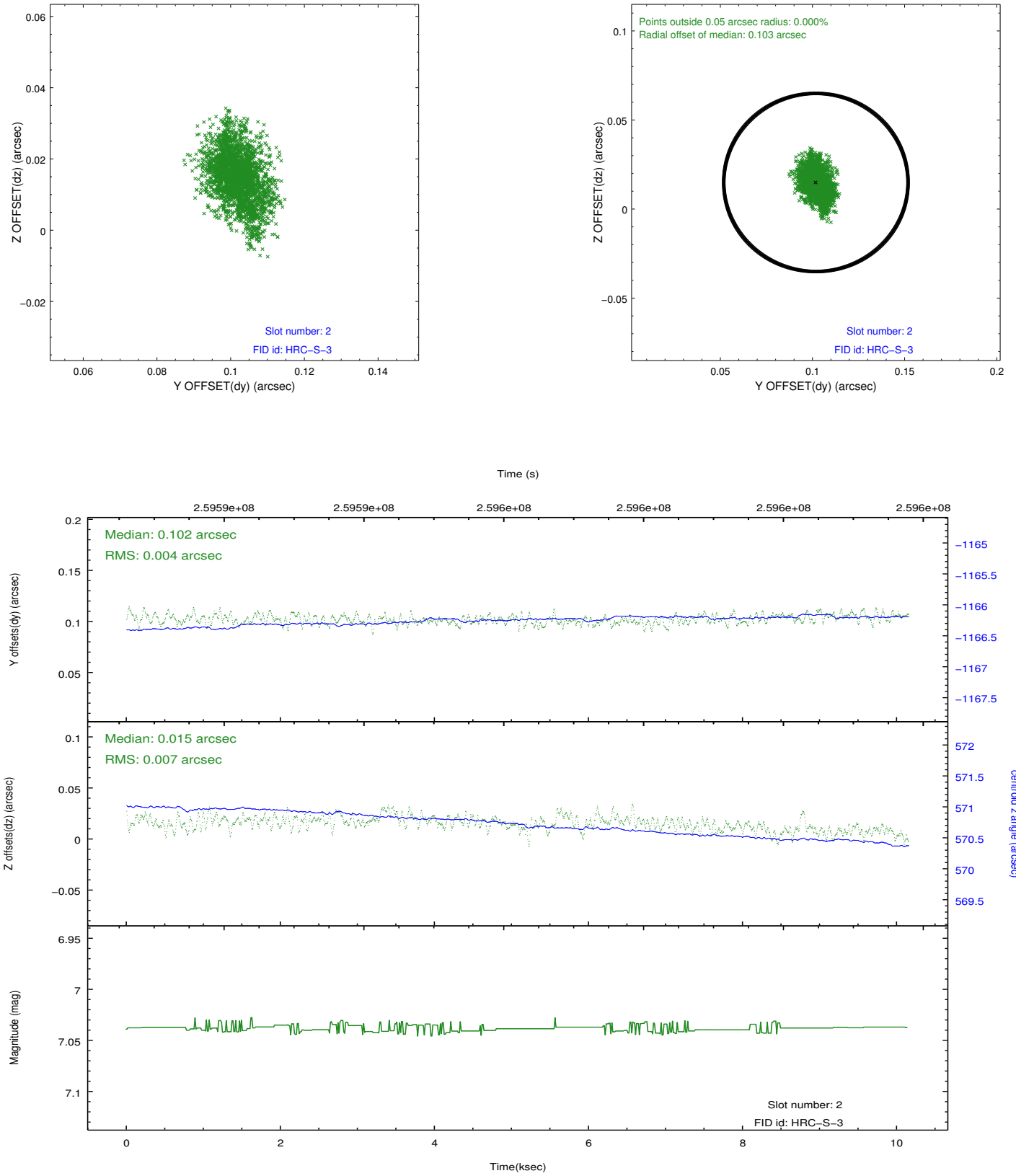
2.5.1 Slot 0



2.5.2 Slot 1

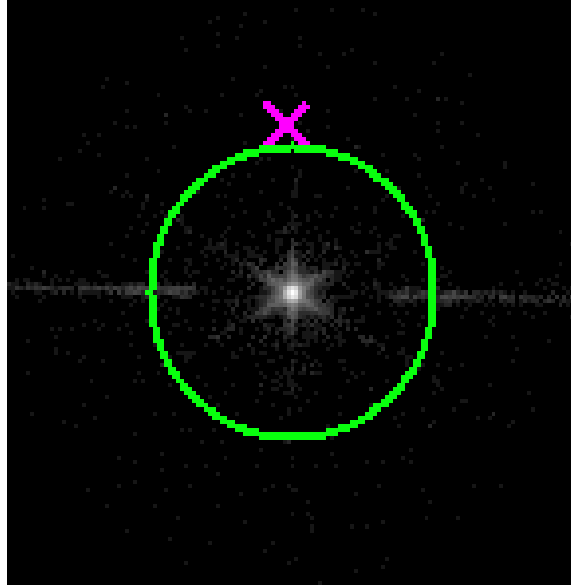


2.5.3 Slot 2

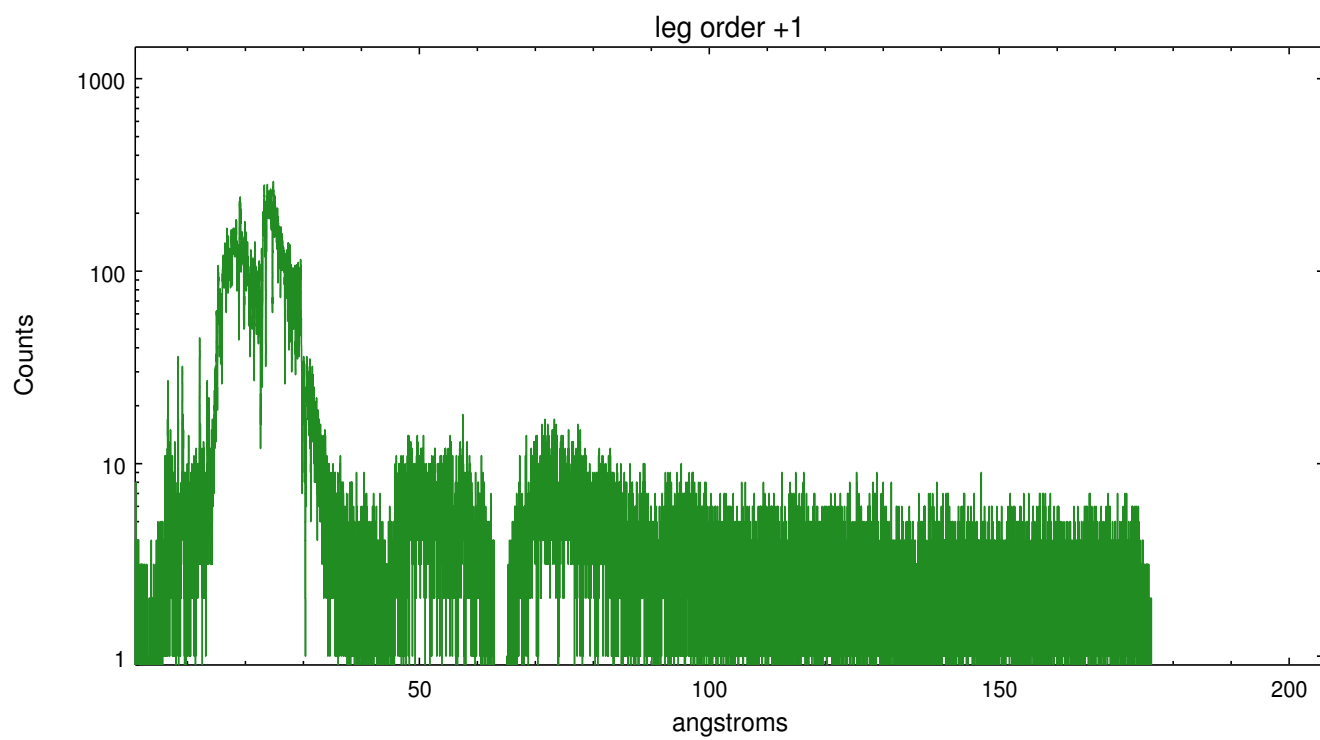
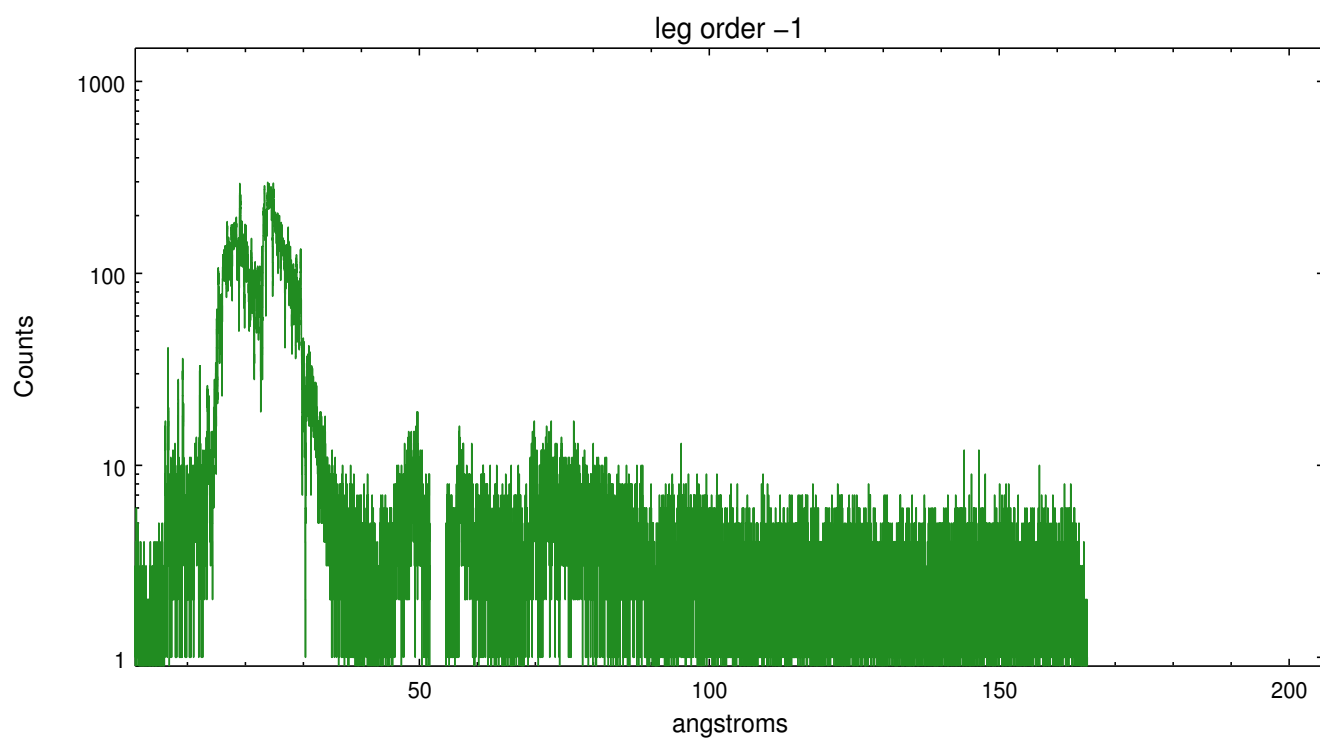


3 Gratings

3.1 LETG Arm



LETG Zero Order



A Summary

A.1 Status

V&V Scientist	Joy Nichols
V&V Date (YYYY-MM-DD)	2012.08.14
V&V Edition	1
V&V Disposition and Status	OK
V&V Charge Time	10.1528817

A.2 Comments