

V&V Reference Report

L2 ASCDS Version : 8.4.3.1

Observation 6916 - L2 Version 2
Chandra X-Ray Center

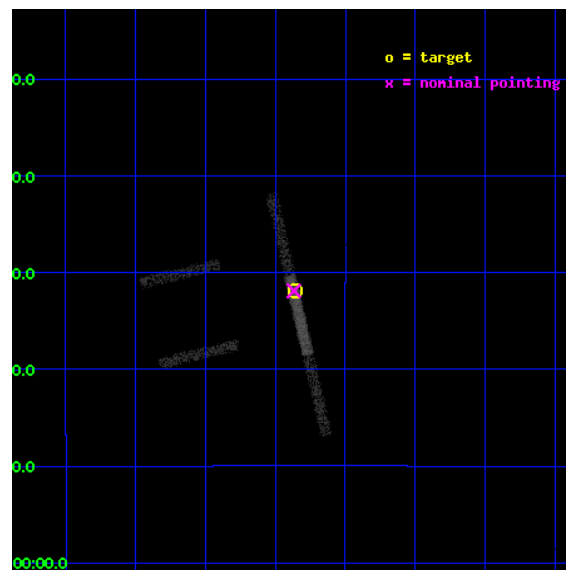
L2 Processing Date : Apr 13 2012

Contents

1	Front	2
2	OBI	3
2.1	OBI	3
2.1.1	Images	3
2.1.2	Bias	3
2.1.3	Parameters	4
2.1.4	Events	4
2.2	Compared Parameters	5
2.3	Aspect	6
2.4	Star Slots	9
2.4.1	Slot 3	9
2.4.2	Slot 4	10
2.4.3	Slot 5	11
2.4.4	Slot 6	12
2.4.5	Slot 7	13
2.5	FID Slots	14
2.5.1	Slot 0	14
2.5.2	Slot 1	15
2.5.3	Slot 2	16
A	Summary	17
A.1	Status	17
A.2	Comments	17

1 Front

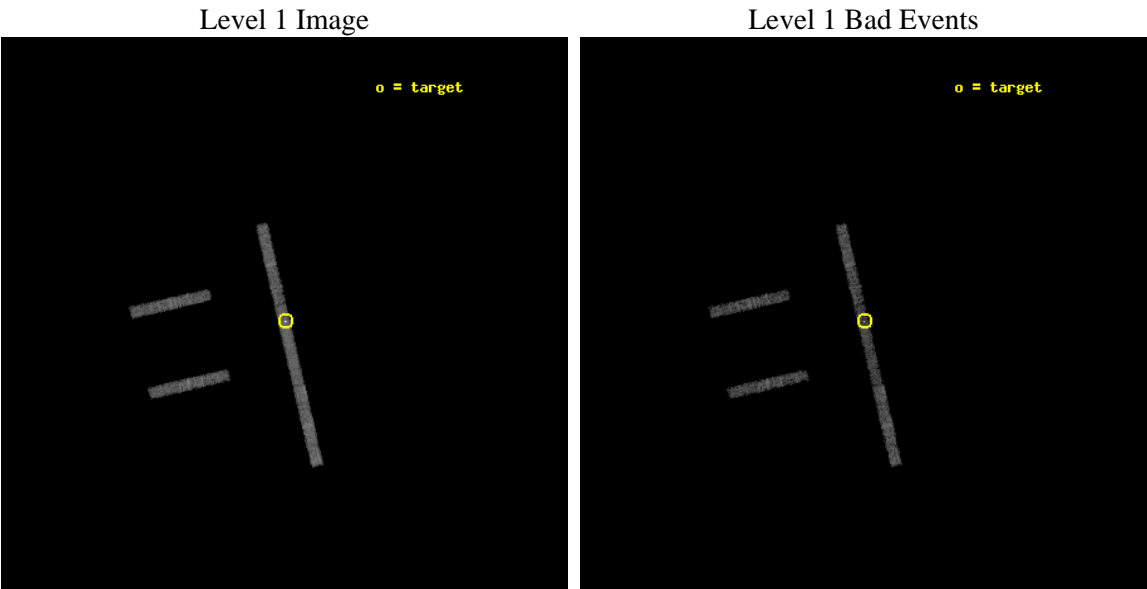
seq_num	701331	Sequence number
obs_id	6916	Observation id
title	Studying the Spatial Structures of the Optical and X-ray Emission Regions of Quasars by Monitoring Microlensing Events	Proposal title
observer	Professor Gordon Garmire	Principal investigator
object	RXJ 1131-1231	Source name
dtcycle	0	
cycle	P	events from which exps? Prim/Second/Both
ra_targ	172.965	Observer's specified target RA [deg]
dec_targ	-12.5325	Observer's specified target Dec [deg]
ra_nom	172.96689599181	Nominal RA [deg]
dec_nom	-12.531694826349	Nominal Dec [deg]
roll_nom	76.87059230361	Nominal Roll [deg]
revision	2	Processing version of data
ontime	5126.7999126315	Sum of GTIs [s]
livetime	4842.8693981999	Livetime [s]
ontime2	5126.7999126315	Sum of GTIs [s]
ontime3	5126.7999126315	Sum of GTIs [s]
ontime6	5126.7999126315	Sum of GTIs [s]
ontime7	5126.7999126315	Sum of GTIs [s]
ontime8	5126.7999126315	Sum of GTIs [s]
l2events	11320	Number of level 2 events



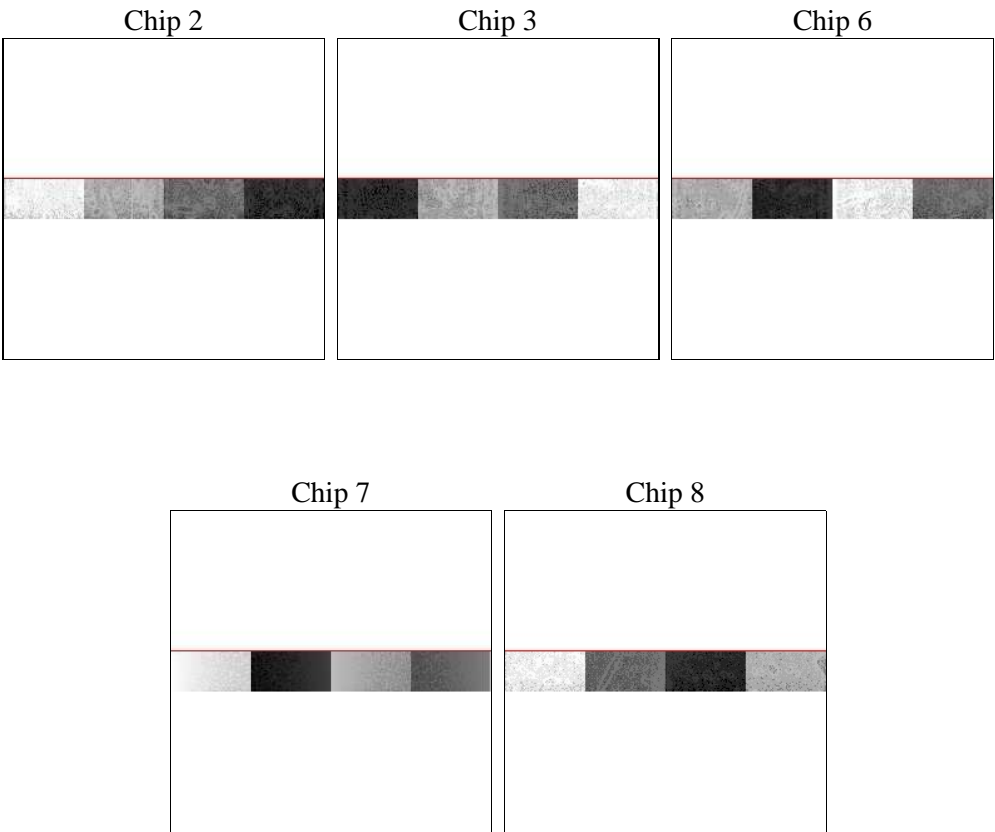
2 OBI

2.1 OBI

2.1.1 Images



2.1.2 Bias



2.1.3 Parameters

obi_num	0	Obi number	sched_exp_time	5000.000000	[s] Scheduled observation exposure time
ascdsver	8.4.3.1	Processing system revision	ontime	5126.7999126315	Sum of GTIs [s]
caldsver	4.4.9	 	ontime2	5126.7999126315	Sum of GTIs [s]
date	2012-04-13T14:44:49	Date and time of file creation	ontime3	5126.7999126315	Sum of GTIs [s]
revision	2	Processing version of data	ontime6	5126.7999126315	Sum of GTIs [s]
			ontime7	5126.7999126315	Sum of GTIs [s]
			ontime8	5126.7999126315	Sum of GTIs [s]
			l1events	53062	Number of level 1 events

2.1.4 Events

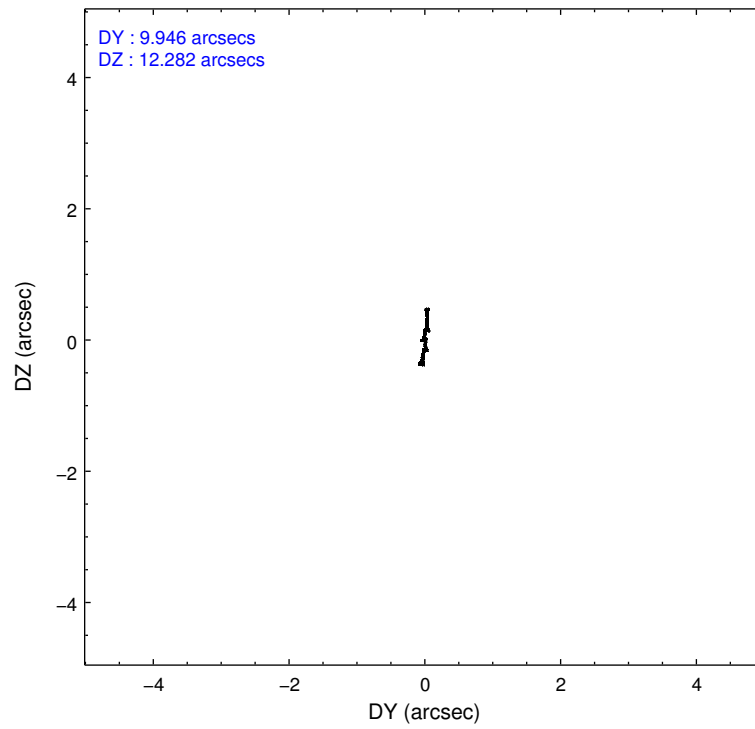
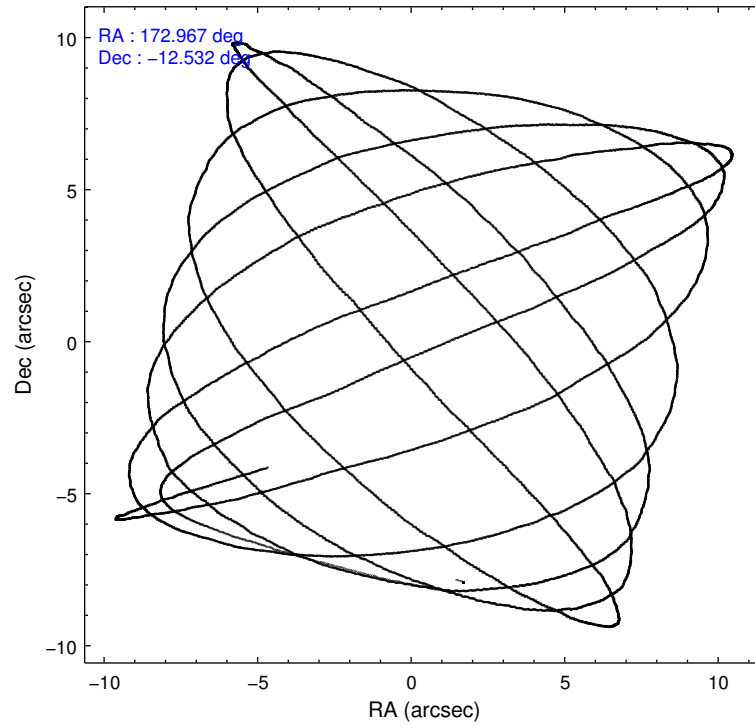
	ccd 2	ccd 3	ccd 6	ccd 7	ccd 8
level 1 events	8294	8279	8929	15341	12219
rejected events	7408	7377	8066	6702	10249
rejected %	89%	89%	90%	43%	83%

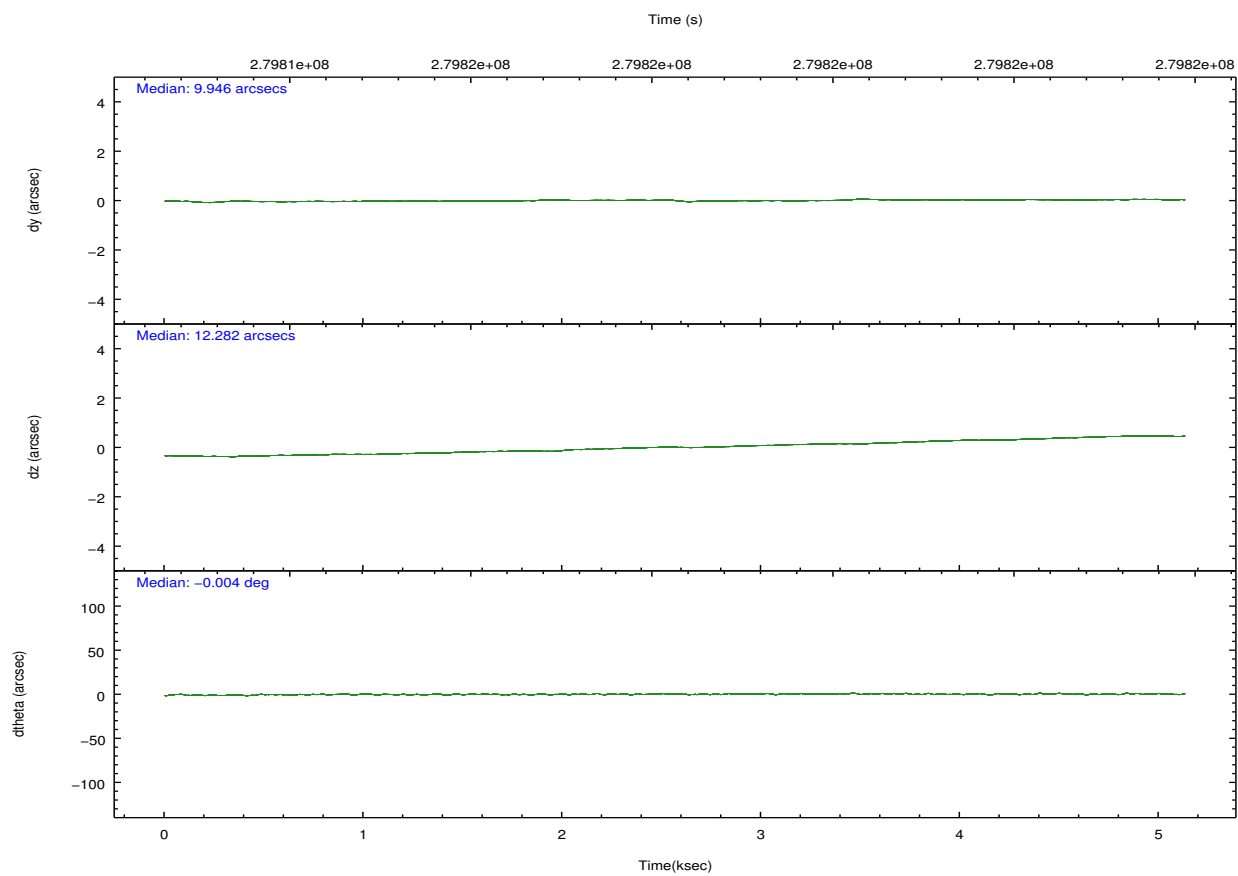
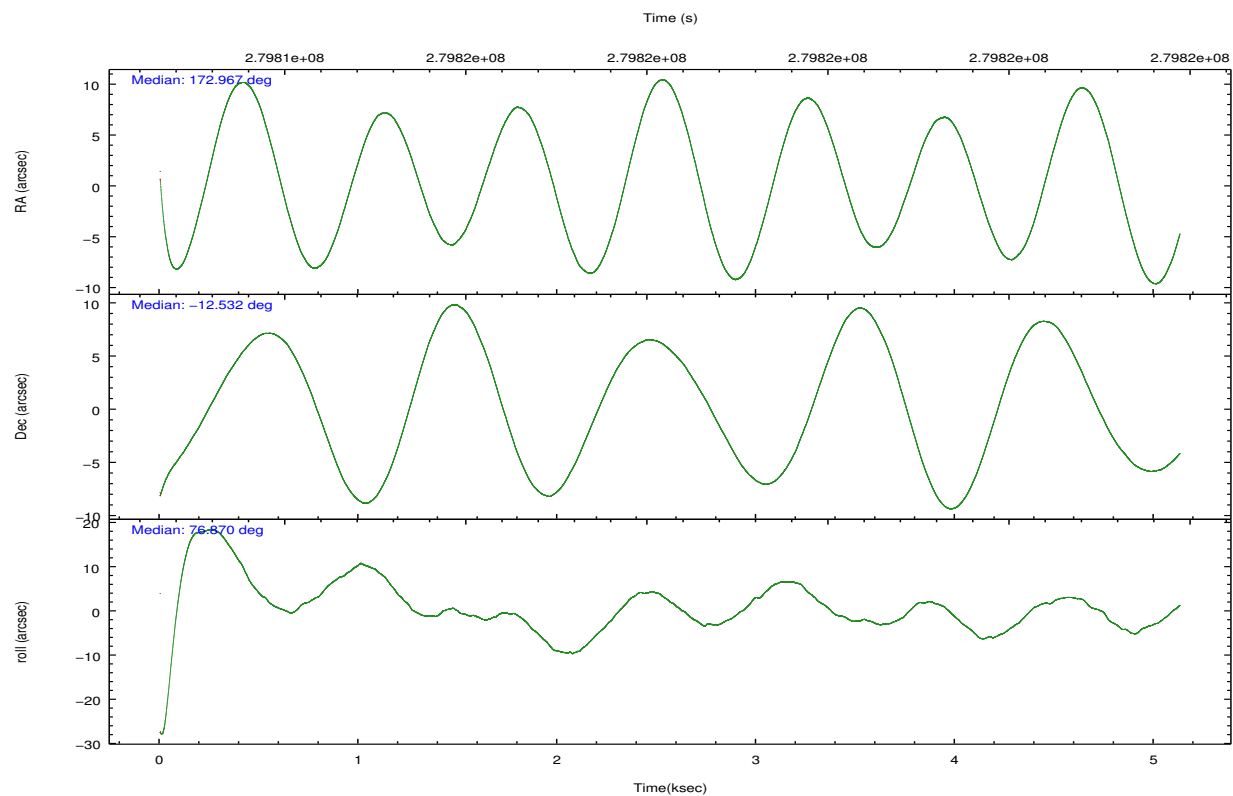
	ccd 2	ccd 3	ccd 6	ccd 7	ccd 8
grade 0 events	381	378	314	1842	583
	4%	4%	3%	12%	4%
grade 1 events	6	3	2	70	4
	0%	0%	0%	0%	0%
grade 2 events	163	179	170	2110	501
	1%	2%	1%	13%	4%
grade 3 events	136	146	162	1017	269
	1%	1%	1%	6%	2%
grade 4 events	163	166	146	1026	250
	1%	2%	1%	6%	2%
grade 5 events	217	301	337	1148	403
	2%	3%	3%	7%	3%
grade 6 events	146	167	183	3220	655
	1%	2%	2%	20%	5%
grade 7 events	7082	6939	7615	4908	9554
	85%	83%	85%	31%	78%

2.2 Compared Parameters

Parameter	Planned	Actual	Parameter	Planned	Actual
Instrument	ACIS	ACIS	Obspar format version number	7	7
Detector	ACIS-23678	ACIS-23678	Obspar file type	PREDICTED	ACTUAL
Grating	NONE	NONE	Obspar update status	NONE	UPDATED
Data mode	VFAINT	VFAINT	Number of optional ACIS chips dropped	0	0
Observation mode	POINTING	POINTING	On-chip summing requested	N	N
[deg] Pointing RA	172.975418	172.9668959918087	Subarray requested	CUSTOM	1/8
[deg] Pointing Dec	-12.557620	-12.53169482634887	Subarray start row	449	449
[deg] Pointing Roll	76.715954	76.87059230361049	Subarray row count	128	128
[mm] SIM focus pos	-0.684267	-0.6828225247311905	Alternating exposures requested	N	N
[mm] SIM defocus	0	0.001444936568705701	[s] Primary exposure time	0.000000	0.7
[mm] SIM translation stage pos	-190.132523	-190.1400660498719			
[mm] SIM translation stage offset	0	0.00754346686406393			
[s] Observation start time (MET)	279813703.184000	279812582.63224			
Observation start date	2006-11-13T14:00:38	2006-11-13T13:43:02			
[s] Observation end time (MET)	279818703.184000	279819236.42005			
Observation end date	2006-11-13T15:23:58	2006-11-13T15:33:56			
Read mode	TIMED	TIMED			

2.3 Aspect



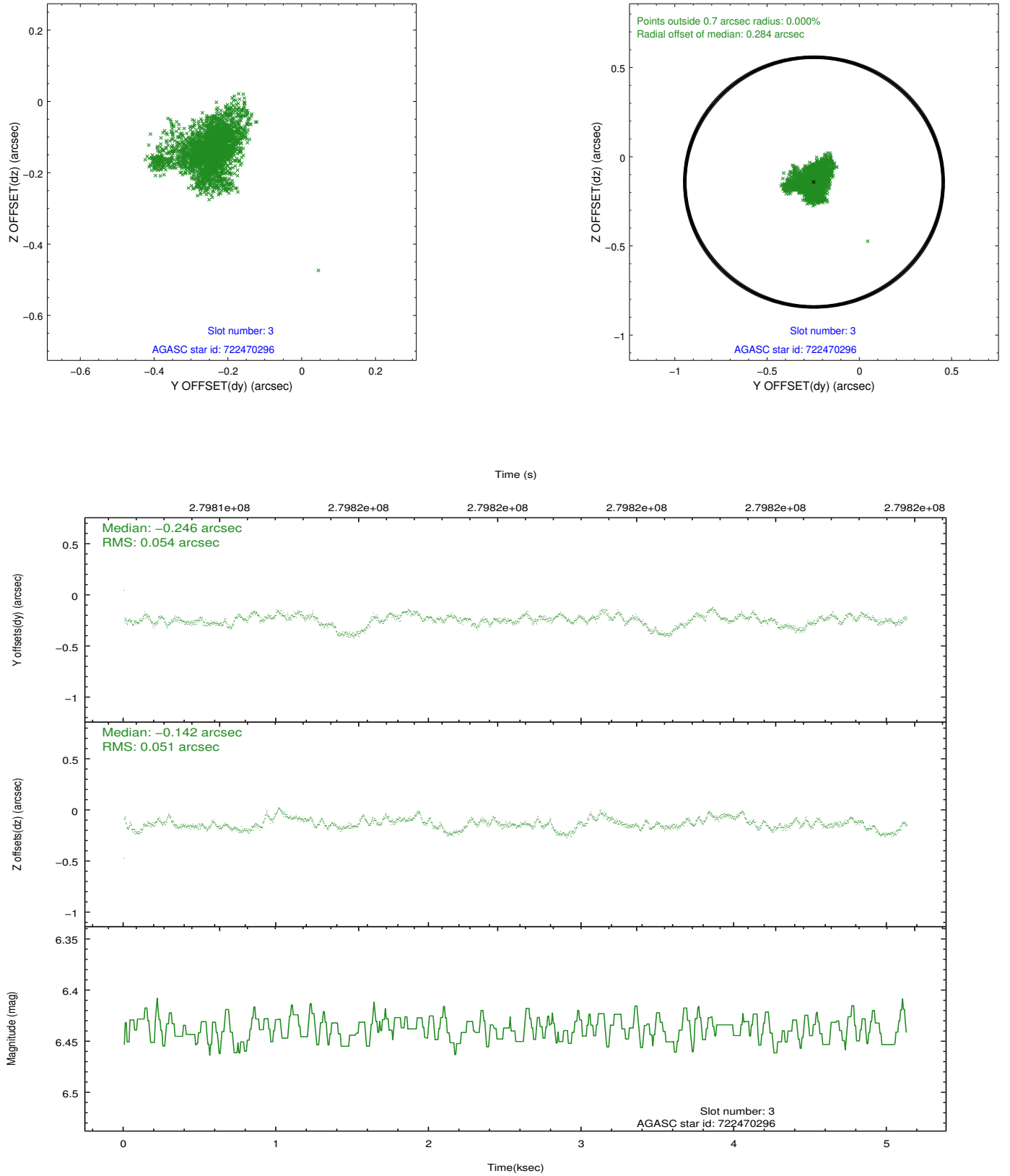


Slot Statistics

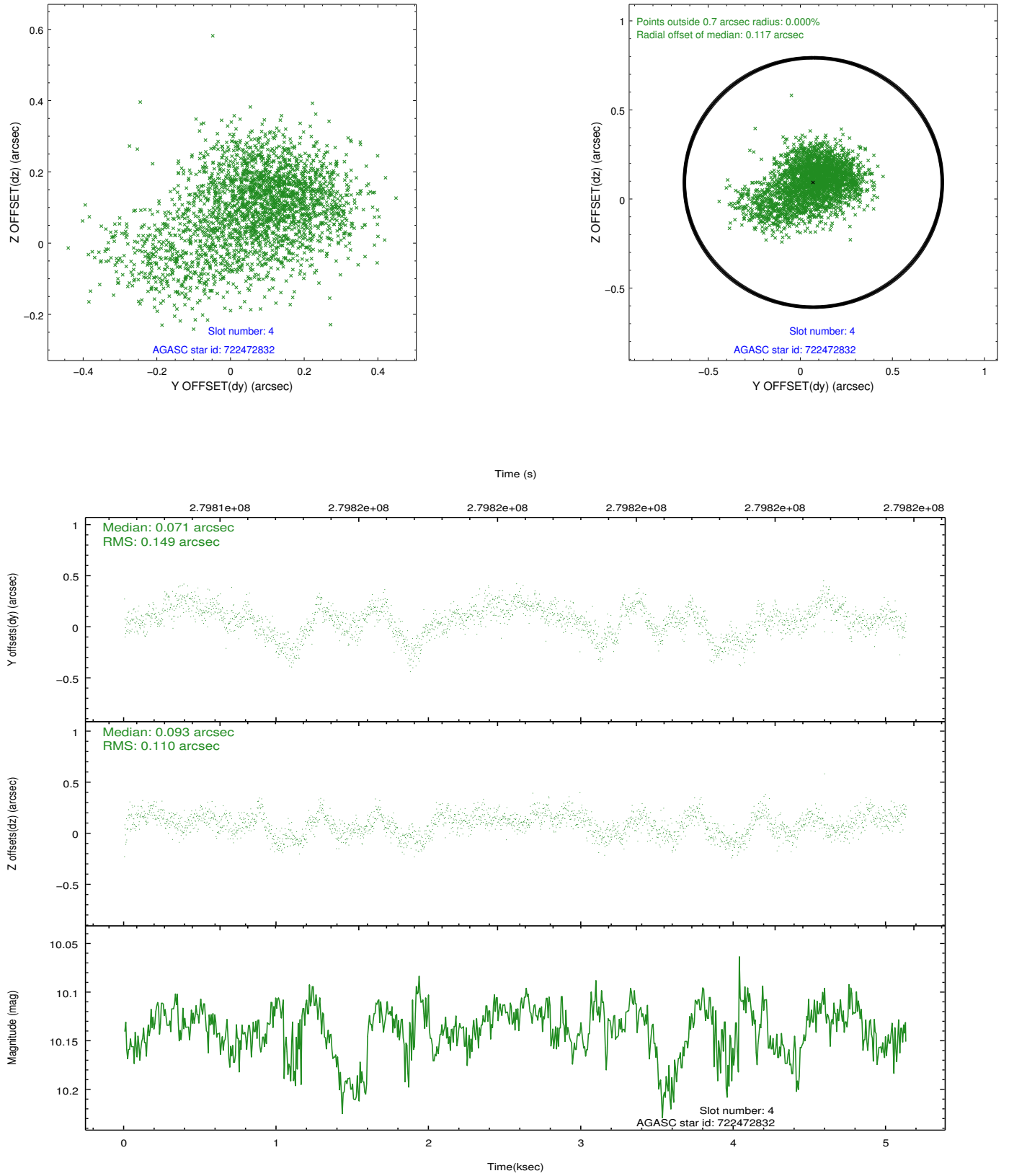
slot	status	id	mag	n_pts	med_dy	med_dz	dr1	dr2	ra	dec	mean_y	mean_z
0	FID	ACIS-S-1	7.19	1252	0.077	-0.066	0.013	0.024	0.000000	0.000000	933.28	-1729.32
1	FID	ACIS-S-5	7.24	1252	-0.143	0.044	0.008	0.012	0.000000	0.000000	-1815.22	167.21
2	FID	ACIS-S-6	7.36	1252	0.046	0.034	0.018	0.030	0.000000	0.000000	397.61	812.42
3	GUIDE	722470296	6.44	2503	-0.246	-0.142	0.077	0.138	172.921689	-12.381367	574.27	329.66
4	GUIDE	722472832	10.14	2500	0.071	0.093	0.191	0.334	173.078970	-12.015349	1984.32	93.88
5	GUIDE	722473176	9.48	2502	-0.087	-0.137	0.110	0.173	172.599746	-12.066793	1415.87	1692.98
6	GUIDE	722871728	9.67	2501	0.077	0.144	0.153	0.264	173.202235	-12.568355	146.23	-783.74
7	GUIDE	722873464	7.30	2502	0.186	0.045	0.095	0.157	172.661543	-13.050266	-1979.34	663.04

2.4 Star Slots

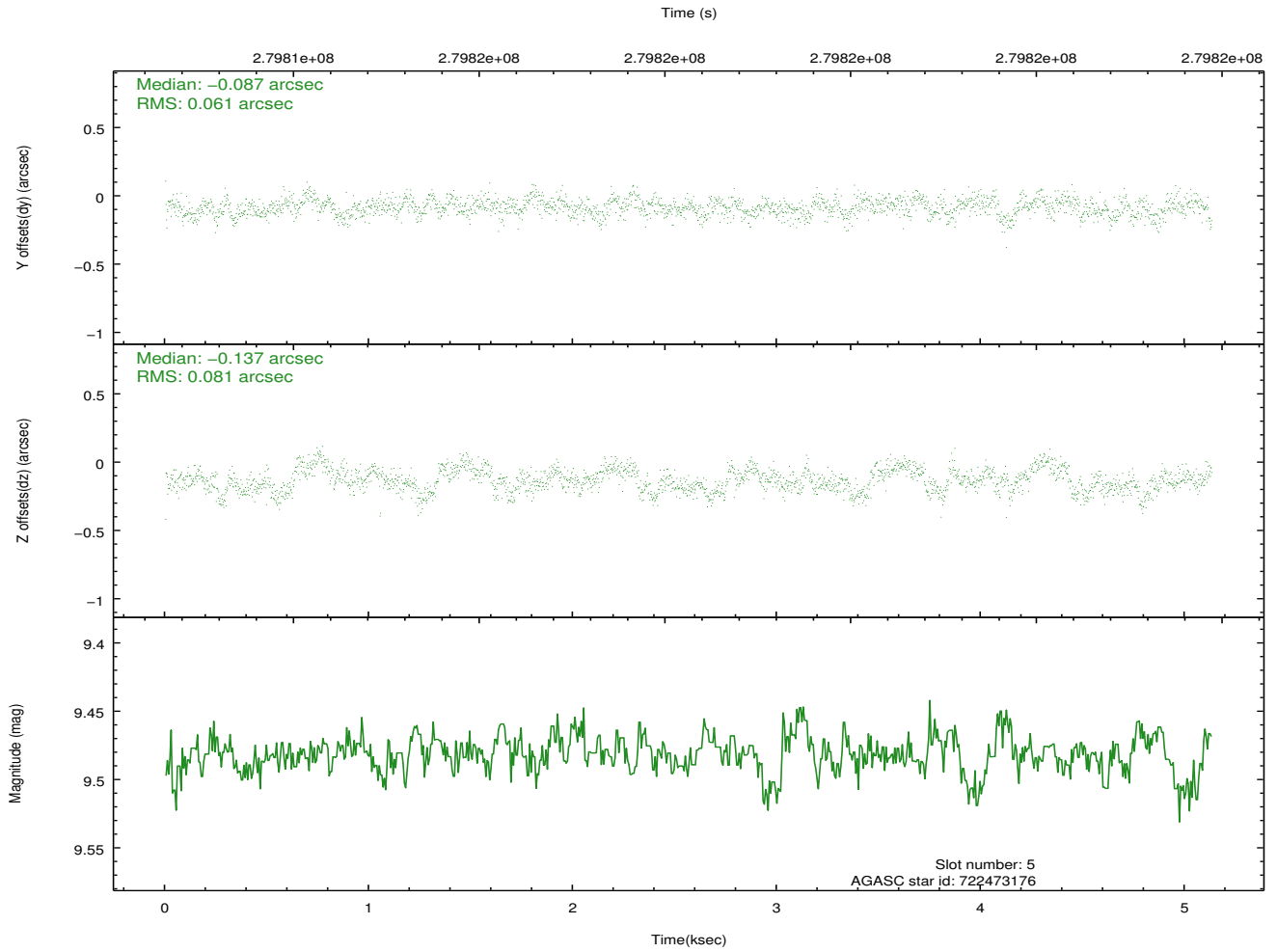
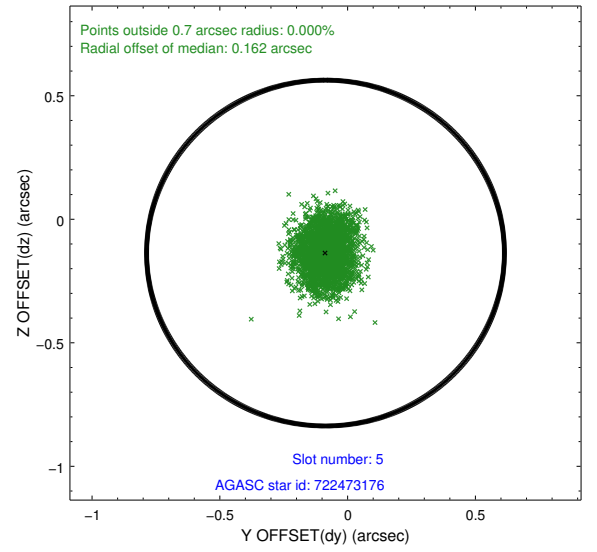
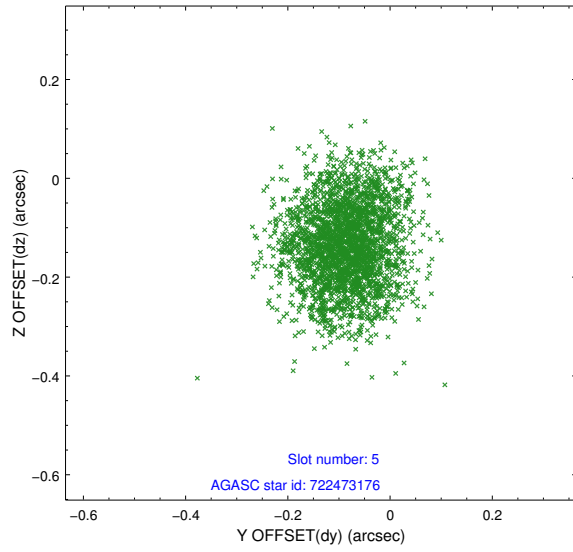
2.4.1 Slot 3



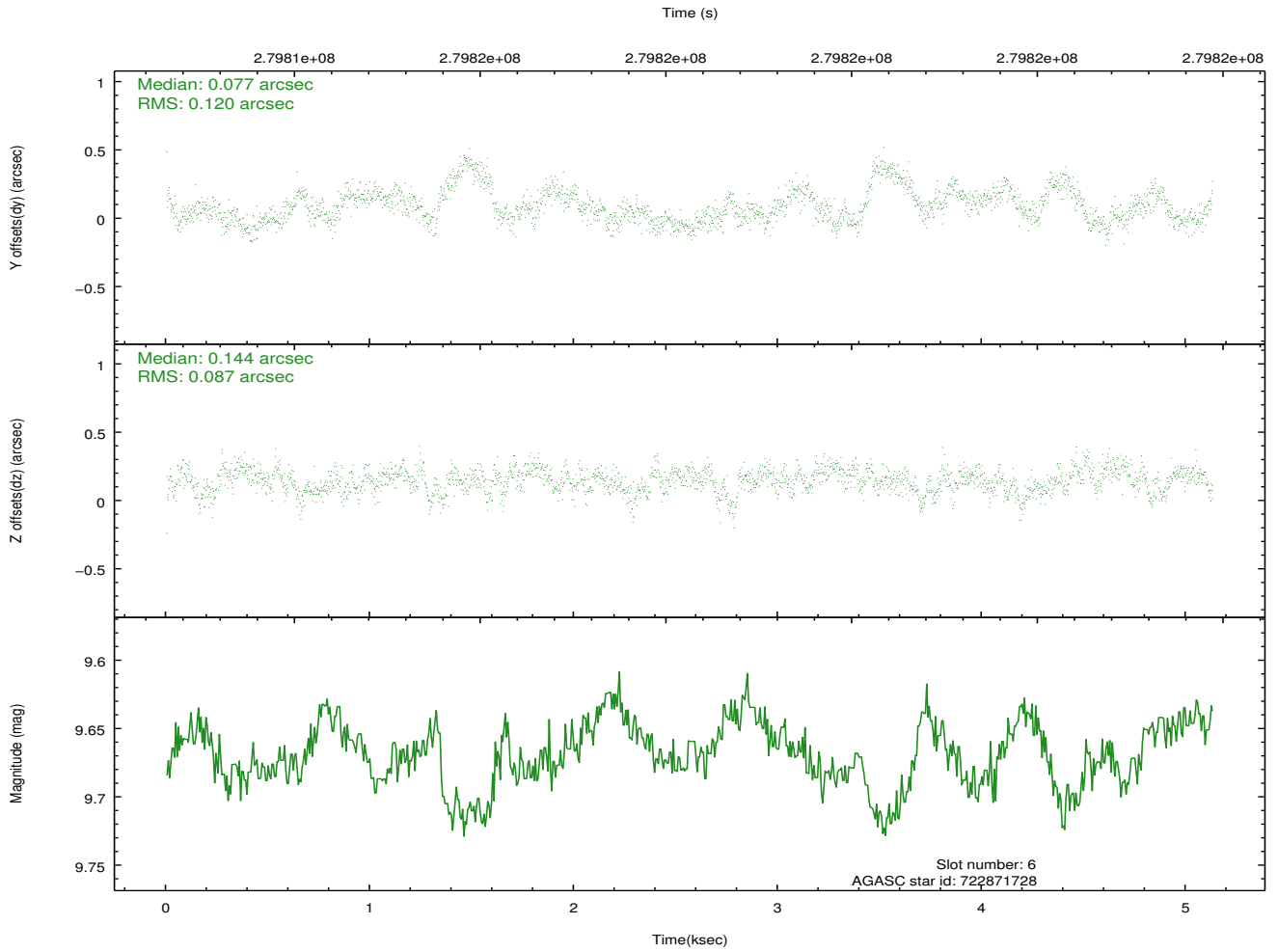
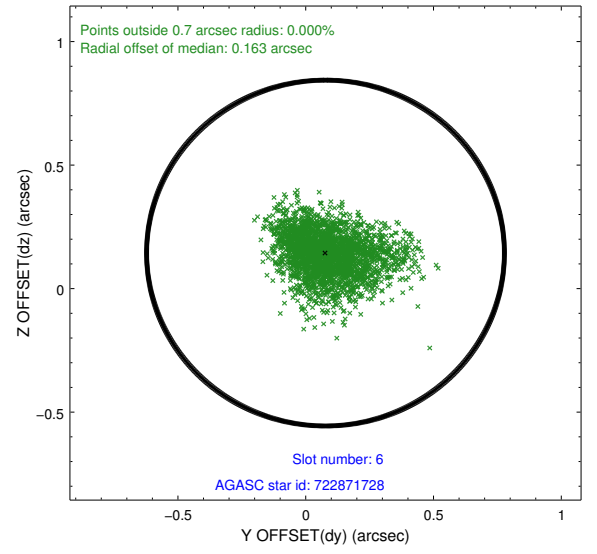
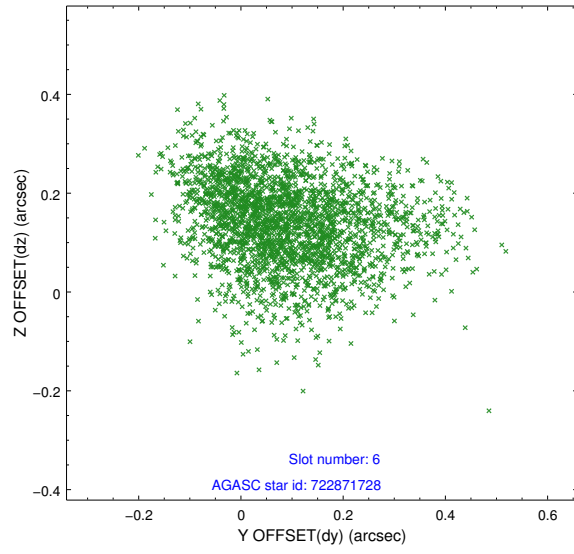
2.4.2 Slot 4



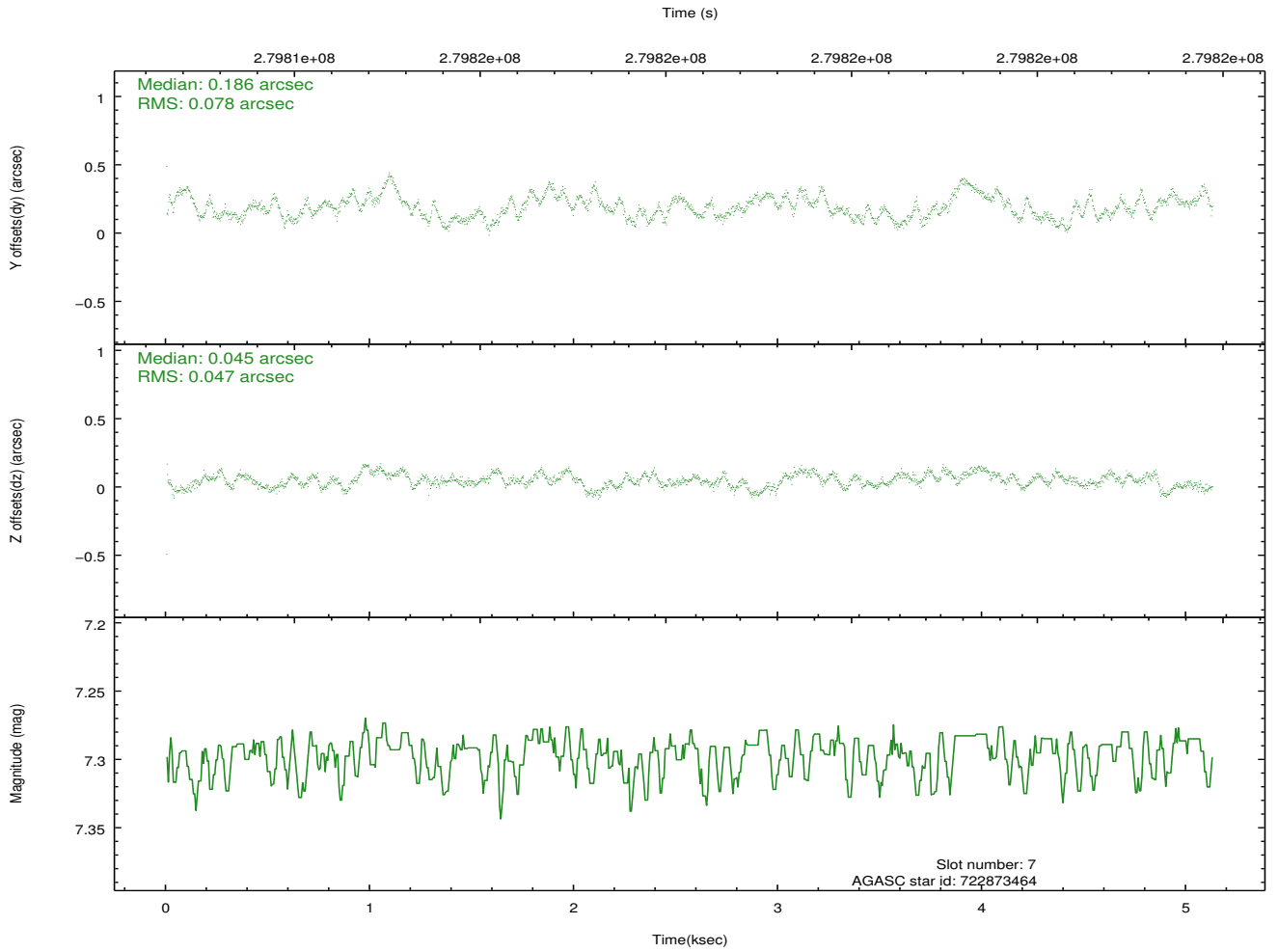
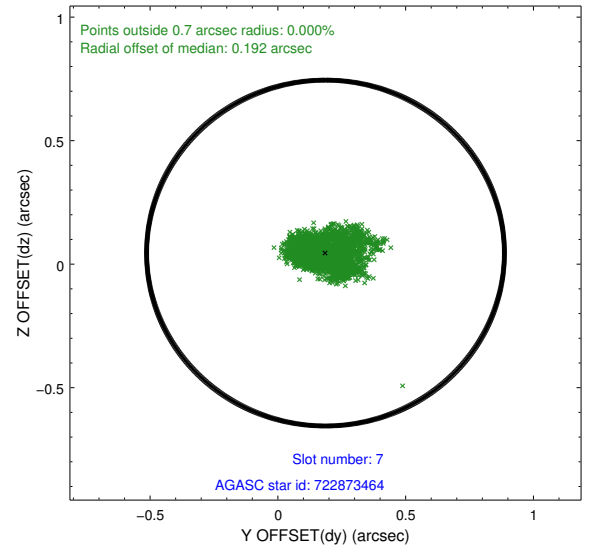
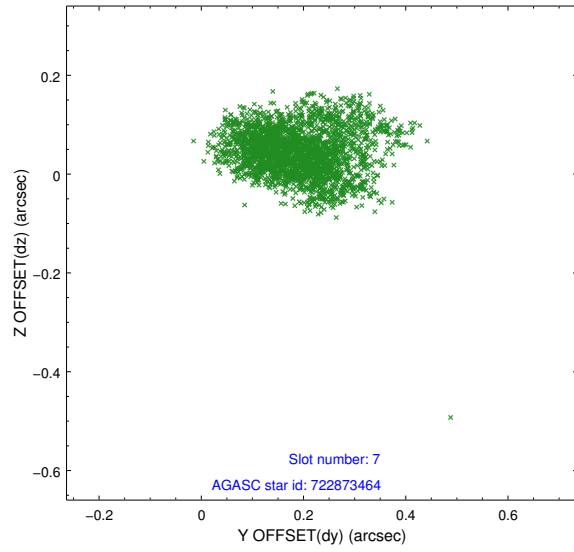
2.4.3 Slot 5



2.4.4 Slot 6

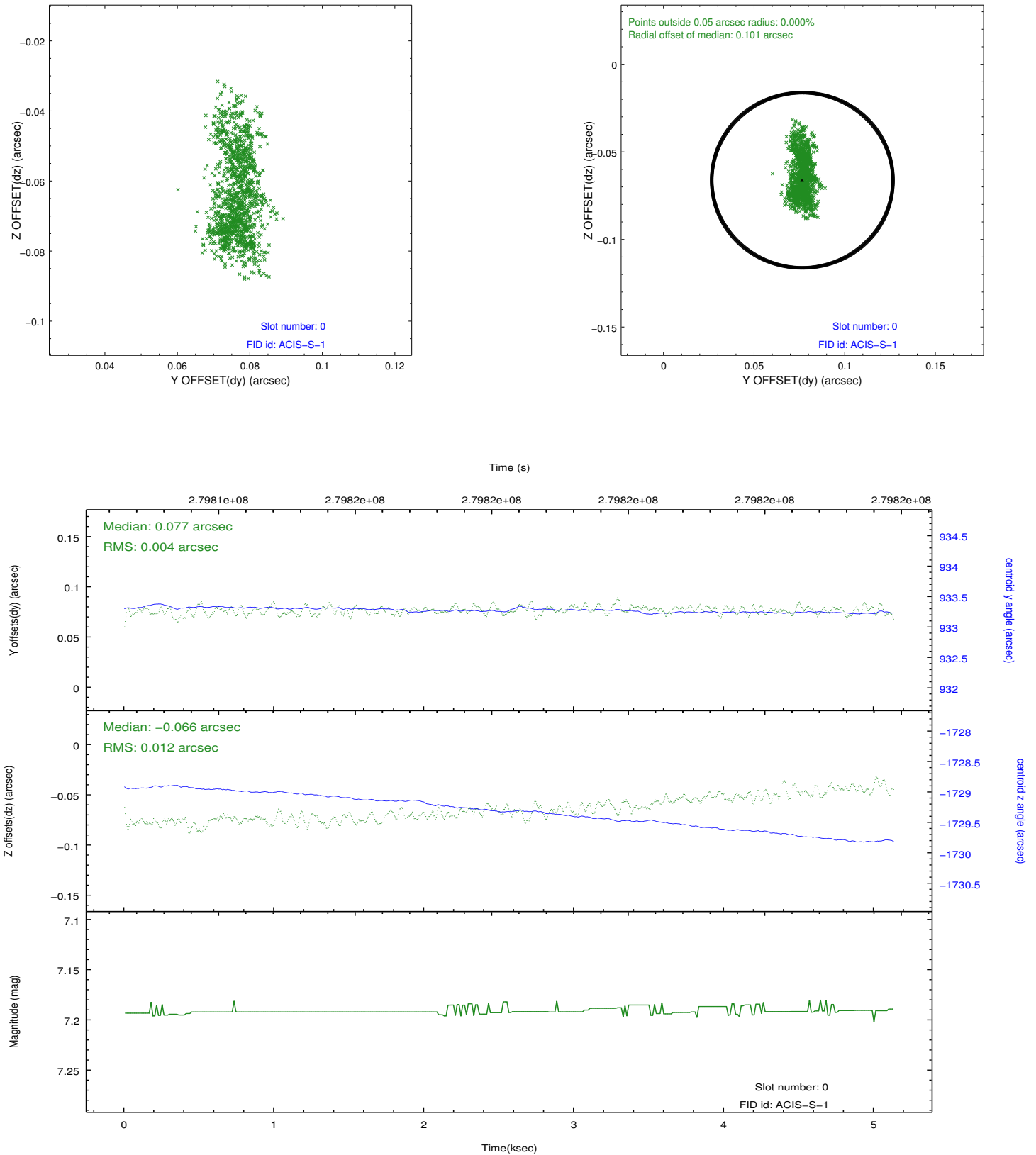


2.4.5 Slot 7

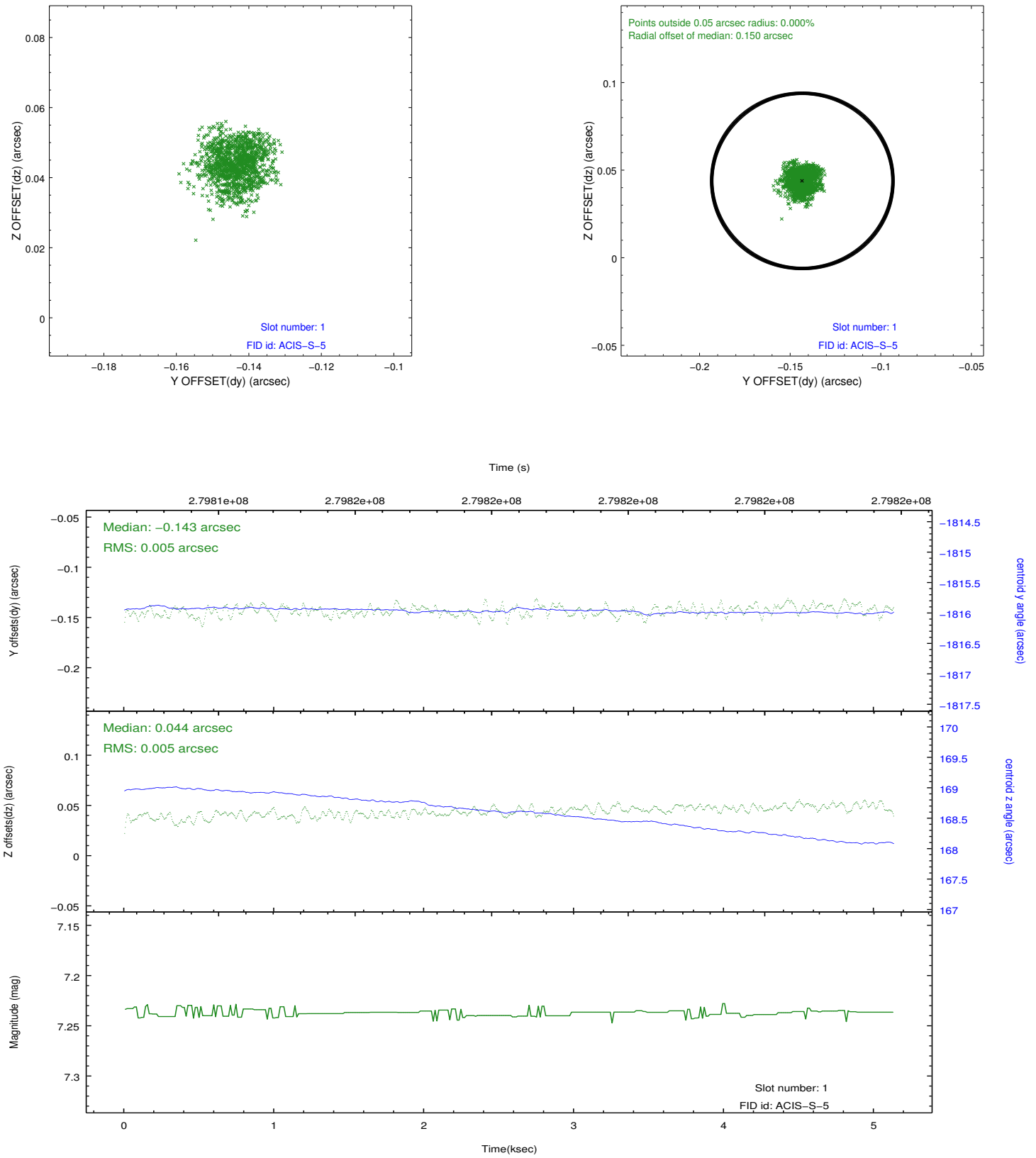


2.5 FID Slots

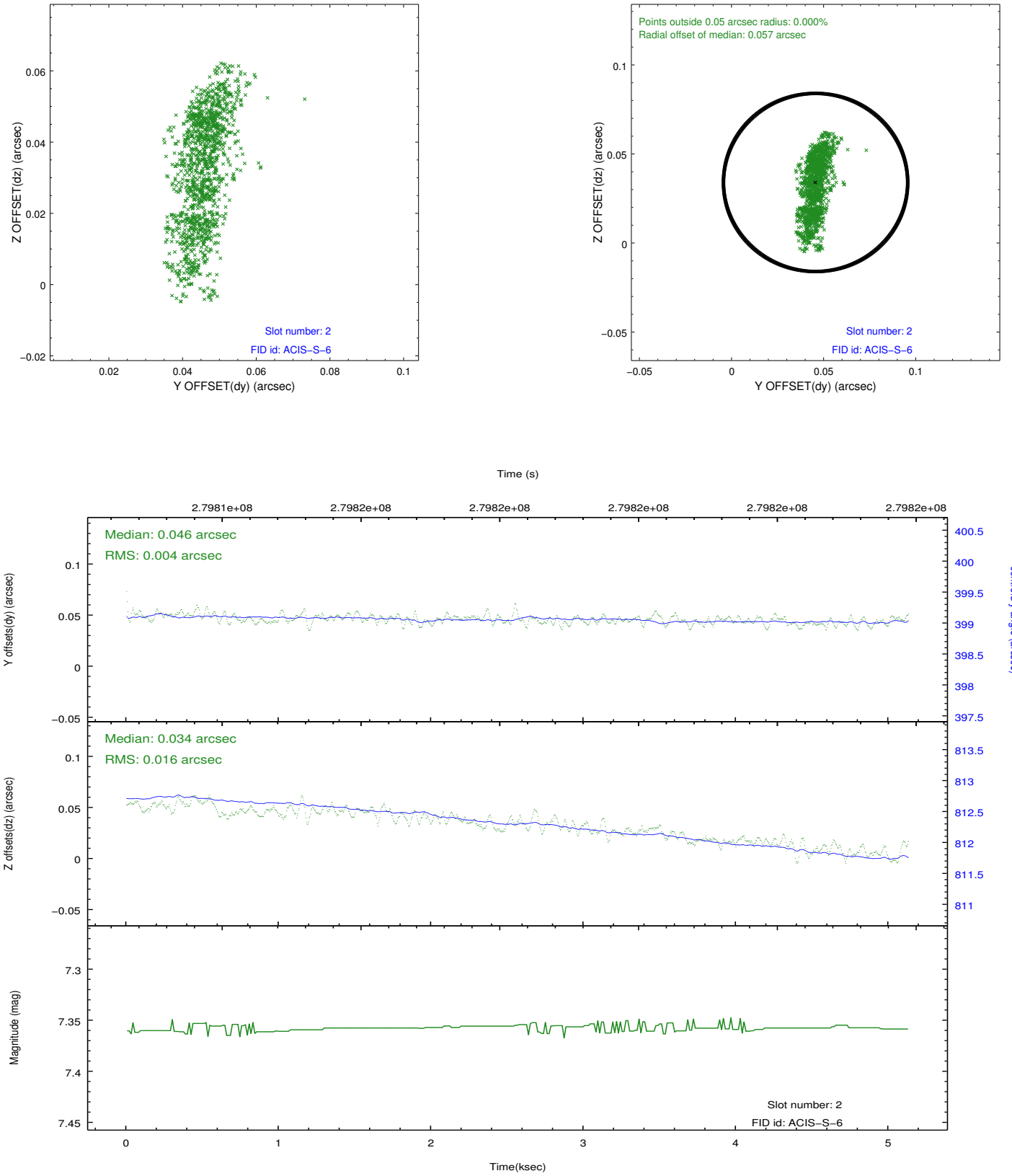
2.5.1 Slot 0



2.5.2 Slot 1



2.5.3 Slot 2



A Summary

A.1 Status

V&V Scientist	Beth Sundheim
V&V Date (YYYY-MM-DD)	2012.04.16
V&V Edition	1
V&V Disposition and Status	OK
V&V Charge Time	5.12679991

A.2 Comments