

# V&V Reference Report

## L2 ASCDS Version : 8.4.3

Observation 6806 - L2 Version 2  
Chandra X-Ray Center

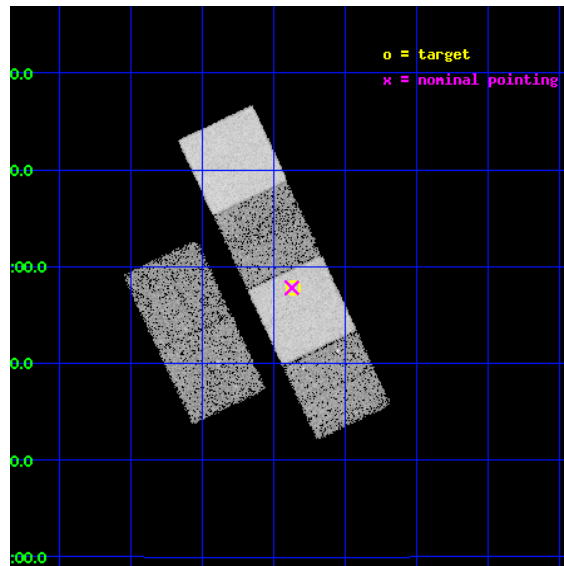
L2 Processing Date : Mar 24 2012

## Contents

<b>1</b>	<b>Front</b>	<b>2</b>
<b>2</b>	<b>OBI</b>	<b>3</b>
2.1	OBI . . . . .	3
2.1.1	Images . . . . .	3
2.1.2	Bias . . . . .	3
2.1.3	Parameters . . . . .	4
2.1.4	Events . . . . .	4
2.2	Compared Parameters . . . . .	5
2.3	Aspect . . . . .	6
2.4	Star Slots . . . . .	9
2.4.1	Slot 3 . . . . .	9
2.4.2	Slot 4 . . . . .	10
2.4.3	Slot 5 . . . . .	11
2.4.4	Slot 6 . . . . .	12
2.4.5	Slot 7 . . . . .	13
2.5	FID Slots . . . . .	14
2.5.1	Slot 0 . . . . .	14
2.5.2	Slot 1 . . . . .	15
2.5.3	Slot 2 . . . . .	16
<b>A</b>	<b>Summary</b>	<b>17</b>
A.1	Status . . . . .	17
A.2	Comments . . . . .	17

# 1 Front

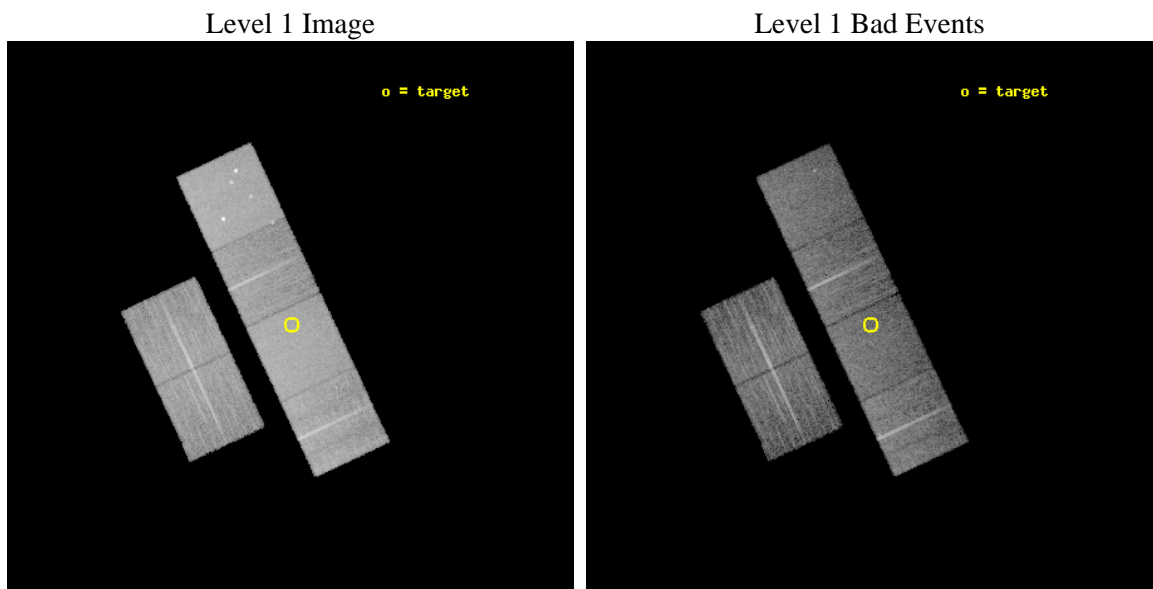
seq_num	701224	Sequence number
obs_id	6806	Observation id
title	X-ray Observations of Optically-Selected Type II Quasars	Proposal
observer	Prof. Michael Strauss	Principal investigator
object	SDSSJ1106+0357	Source name
dtcycle	0	&#160
cycle	P	events from which exps? Prim/Second/Both
ra_targ	166.591667	Observer's specified target RA [deg]
dec_targ	3.963083	Observer's specified target Dec [deg]
ra_nom	166.59368256909	Nominal RA [deg]
dec_nom	3.9635230253063	Nominal Dec [deg]
roll_nom	64.867083766441	Nominal Roll [deg]
revision	2	Processing version of data
ontime	10159.999962151	Sum of GTIs [s]
livetime	10031.347925013	Livetime [s]
ontime2	10159.999962151	Sum of GTIs [s]
ontime3	10159.999962151	Sum of GTIs [s]
ontime5	10159.999962151	Sum of GTIs [s]
ontime6	10159.999962151	Sum of GTIs [s]
ontime7	10159.999962151	Sum of GTIs [s]
ontime8	10159.999962151	Sum of GTIs [s]
l2events	137926	Number of level 2 events



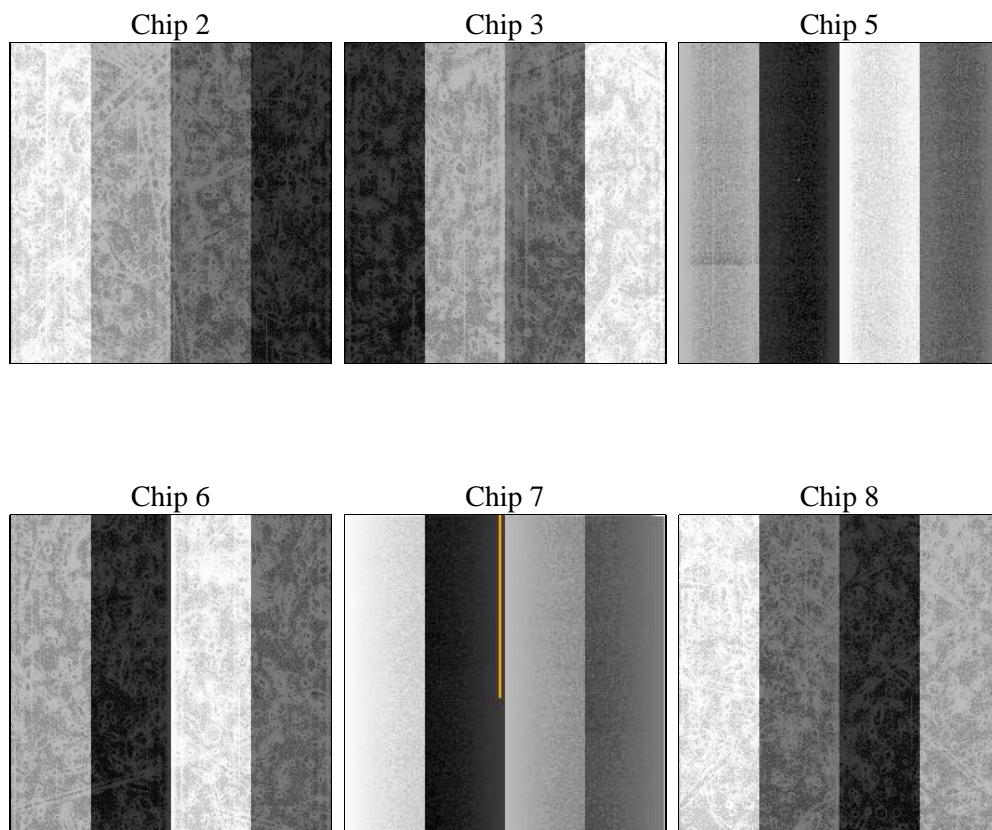
## 2 OBI

### 2.1 OBI

#### 2.1.1 Images



#### 2.1.2 Bias



### 2.1.3 Parameters

obi_num	0	Obi number	sched_exp_time	10000.000000	[s] Scheduled observation exposure time
ascdsver	8.4.3	Processing system revision	ontime	10159.999962151	Sum of GTIs [s]
caldsver	4.4.8	&#160	ontime2	10159.999962151	Sum of GTIs [s]
date	2012-03-24T23:51:05	Date and time of file creation	ontime3	10159.999962151	Sum of GTIs [s]
revision	2	Processing version of data	ontime5	10159.999962151	Sum of GTIs [s]
			ontime6	10159.999962151	Sum of GTIs [s]
			ontime7	10159.999962151	Sum of GTIs [s]
			ontime8	10159.999962151	Sum of GTIs [s]
			l1events	626548	Number of level 1 events

### 2.1.4 Events

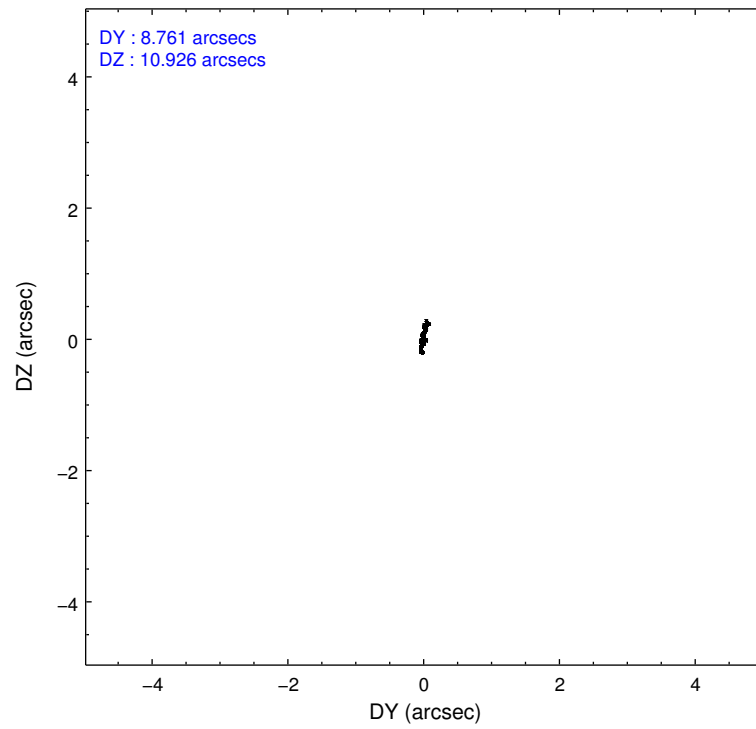
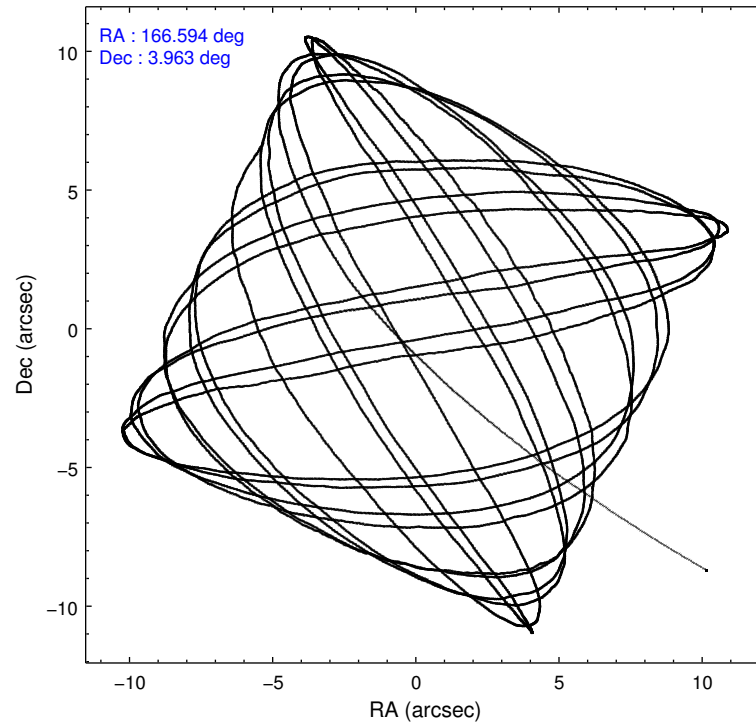
	ccd 2	ccd 3	ccd 5	ccd 6	ccd 7	ccd 8		ccd 2	ccd 3	ccd 5	ccd 6	ccd 7	ccd 8
level 1 events	92177	82831	135648	86702	119601	109589	grade 0 events	4354	4333	9740	4012	4403	7380
rejected events	82233	73101	72959	76603	71660	86734		4%	5%	7%	4%	3%	6%
rejected %	89%	88%	53%	88%	59%	79%	grade 1 events	45	55	405	58	129	80
								0%	0%	0%	0%	0%	0%
							grade 2 events	2106	1920	18251	2196	9857	5404
								2%	2%	13%	2%	8%	4%
							grade 3 events	930	990	2259	951	4123	2282
								1%	1%	1%	1%	3%	2%
							grade 4 events	1017	1012	2185	1018	4222	2287
								1%	1%	1%	1%	3%	2%
							grade 5 events	3444	4008	9583	4021	11317	5399
								3%	4%	7%	4%	9%	4%
							grade 6 events	1762	1707	31700	2165	26484	5979
								1%	2%	23%	2%	22%	5%
							grade 7 events	78519	68806	61525	72281	59066	80778
								85%	83%	45%	83%	49%	73%

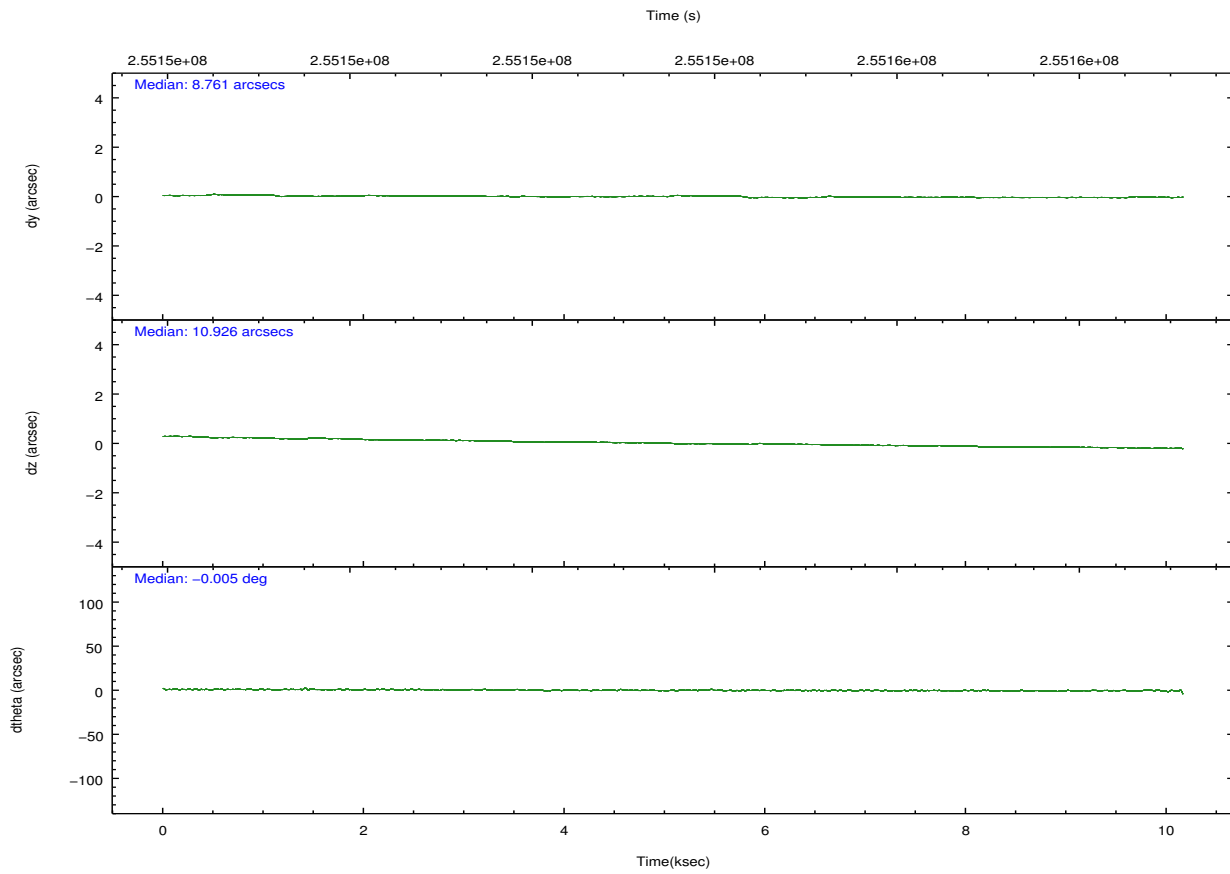
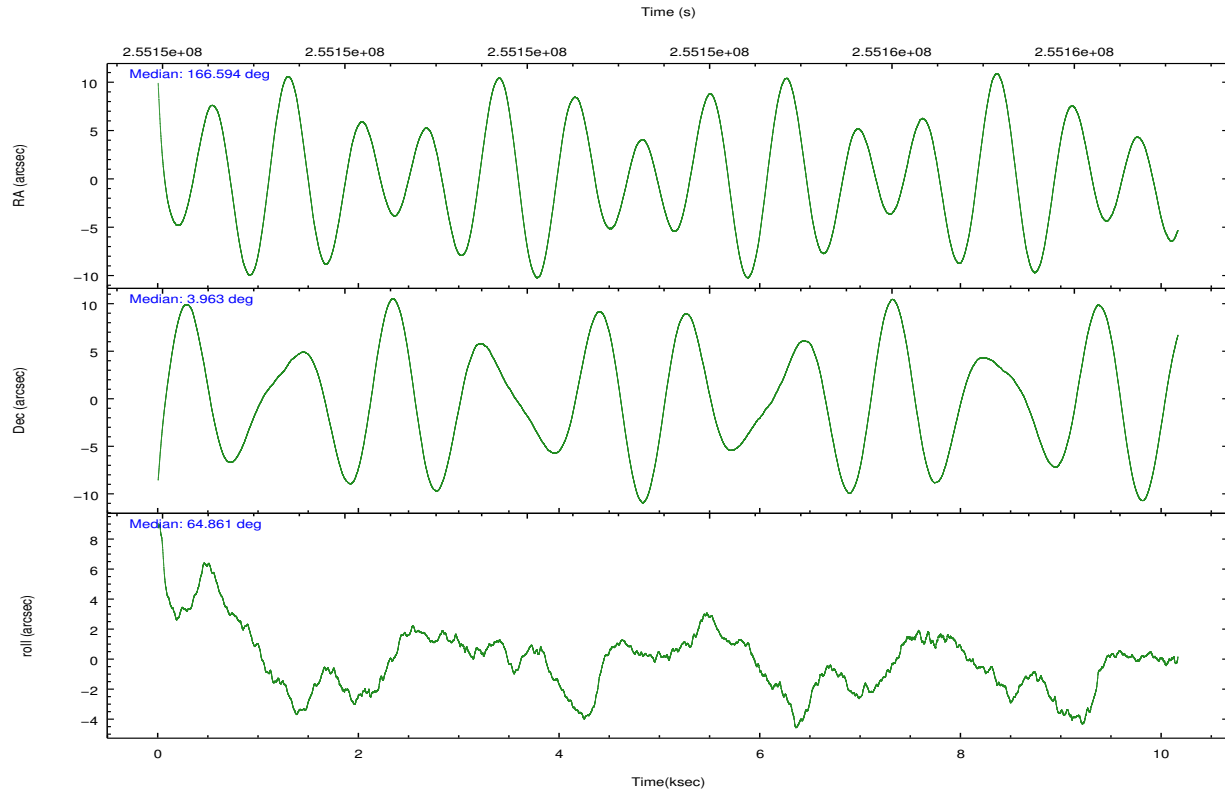


## 2.2 Compared Parameters

Parameter	Planned	Actual	Parameter	Planned	Actual
Instrument	ACIS	ACIS	Obspar format version number	7	7
Detector	ACIS-235678	ACIS-235678	Obspar file type	PREDICTED	ACTUAL
Grating	NONE	NONE	Obspar update status	NONE	UPDATED
Data mode	FAINT	FAINT	Number of optional ACIS chips dropped	0	0
Observation mode	POINTING	POINTING	On-chip summing requested	N	N
[deg] Pointing RA	166.596405	166.5936825690859	Subarray requested	NONE	NONE
[deg] Pointing Dec	3.936398	3.963523025306266	Alternating exposures requested	N	N
[deg] Pointing Roll	64.710255	64.86708376644094	[s] Primary exposure time	0.000000	3.2
[mm] SIM focus pos	-0.684267	-0.6828225247311905			
[mm] SIM defocus	0	0.001444936568705701			
[mm] SIM translation stage pos	-190.132523	-190.1425803651734			
[mm] SIM translation stage offset	0	0.01005778216563158			
[s] Observation start time (MET)	255148632.184000	255147455.54048			
Observation start date	2006-02-01T02:36:07	2006-02-01T02:17:35			
[s] Observation end time (MET)	255158632.184000	255159447.01604			
Observation end date	2006-02-01T05:22:47	2006-02-01T05:37:27			
Read mode	TIMED	TIMED			

## 2.3 Aspect



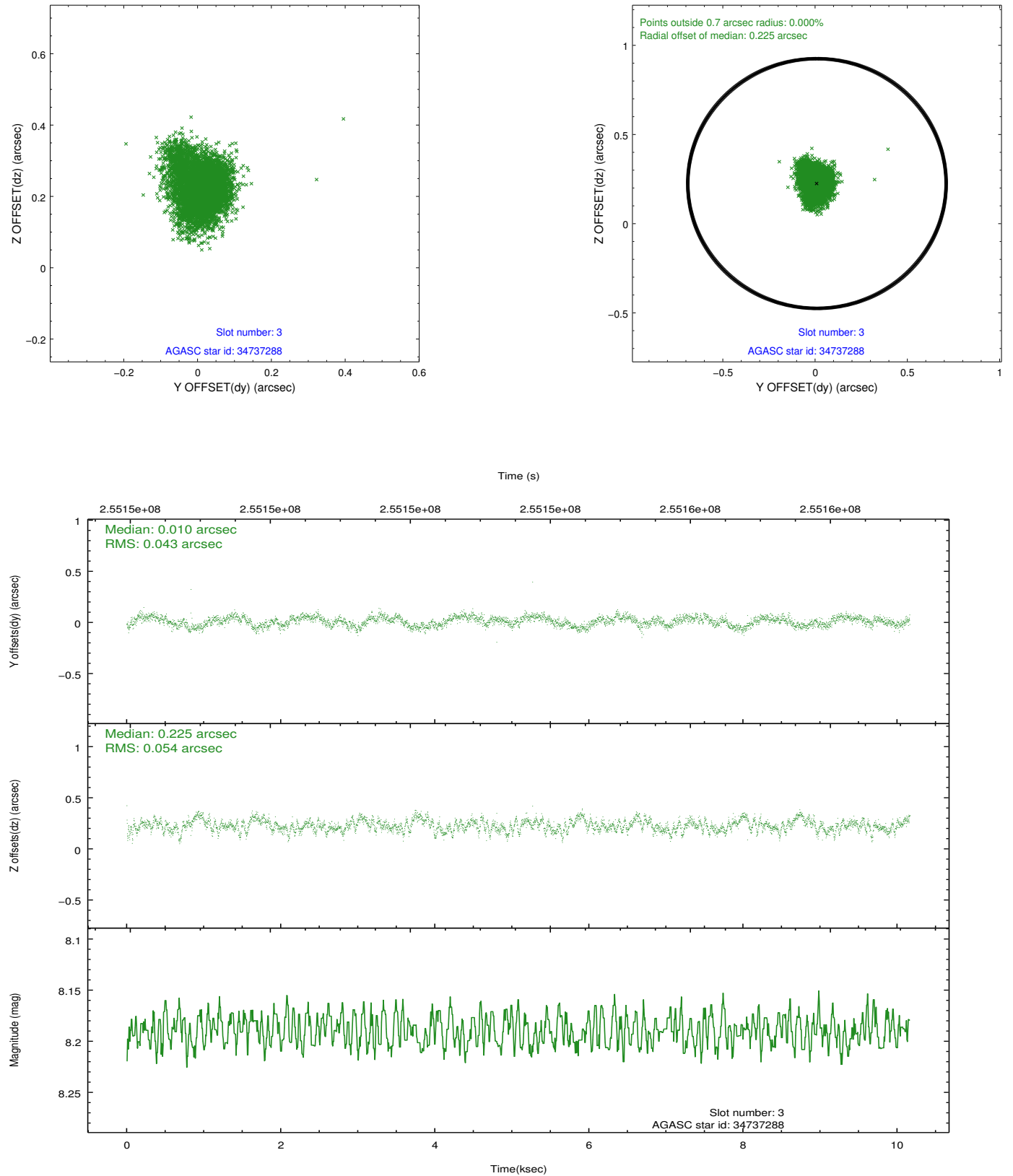


### Slot Statistics

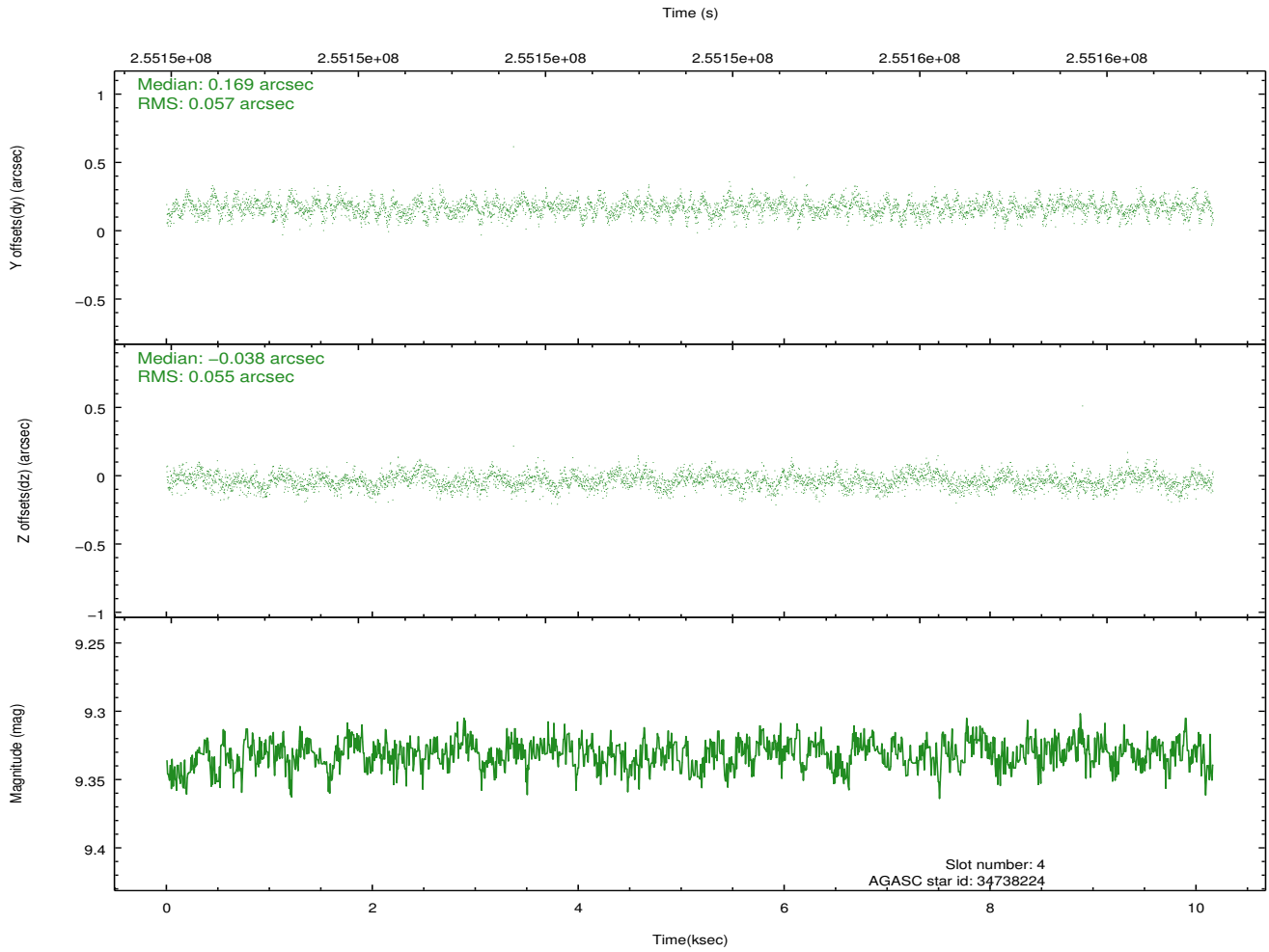
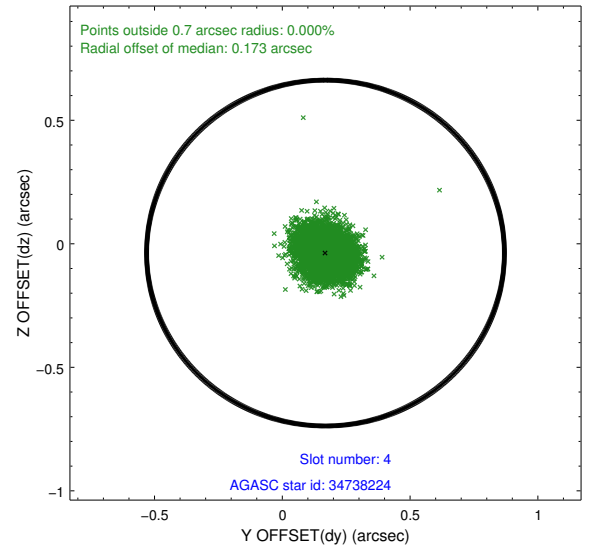
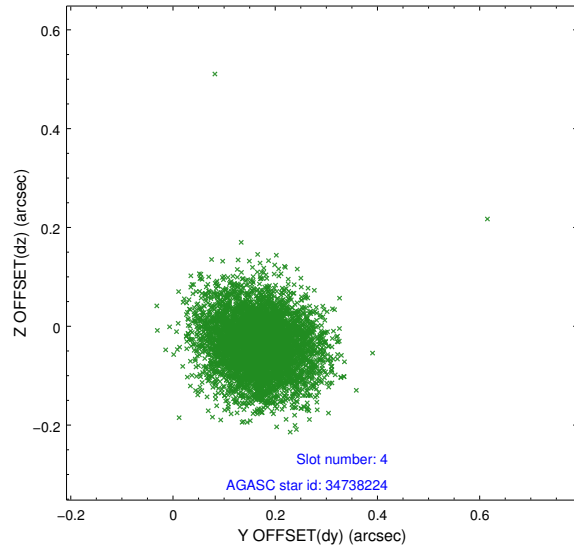
slot	status	id	mag	n_pts	med_dy	med_dz	dr1	dr2	ra	dec	mean_y	mean_z
0	FID	ACIS-S-2	7.11	2479	-0.039	-0.017	0.007	0.011	0.000000	0.000000	-761.56	-1732.20
1	FID	ACIS-S-4	7.21	2479	0.139	0.024	0.005	0.010	0.000000	0.000000	2151.62	175.85
2	FID	ACIS-S-5	7.23	2480	-0.131	0.002	0.006	0.011	0.000000	0.000000	-1813.87	170.01
3	GUIDE	34737288	8.19	4959	0.010	0.225	0.073	0.121	167.057112	3.533369	-603.85	-2116.14
4	GUIDE	34738224	9.33	4955	0.169	-0.038	0.085	0.136	166.021842	3.789522	-1359.11	1639.89
5	GUIDE	34739080	9.98	4953	-0.147	-0.164	0.123	0.201	166.214718	4.459197	1116.35	2043.19
6	GUIDE	34740624	9.37	4956	0.142	-0.077	0.090	0.145	166.274508	3.645237	-1441.16	598.11
7	GUIDE	34736064	9.91	4942	-0.165	0.045	0.135	0.225	166.740532	4.594355	2362.31	544.79

## 2.4 Star Slots

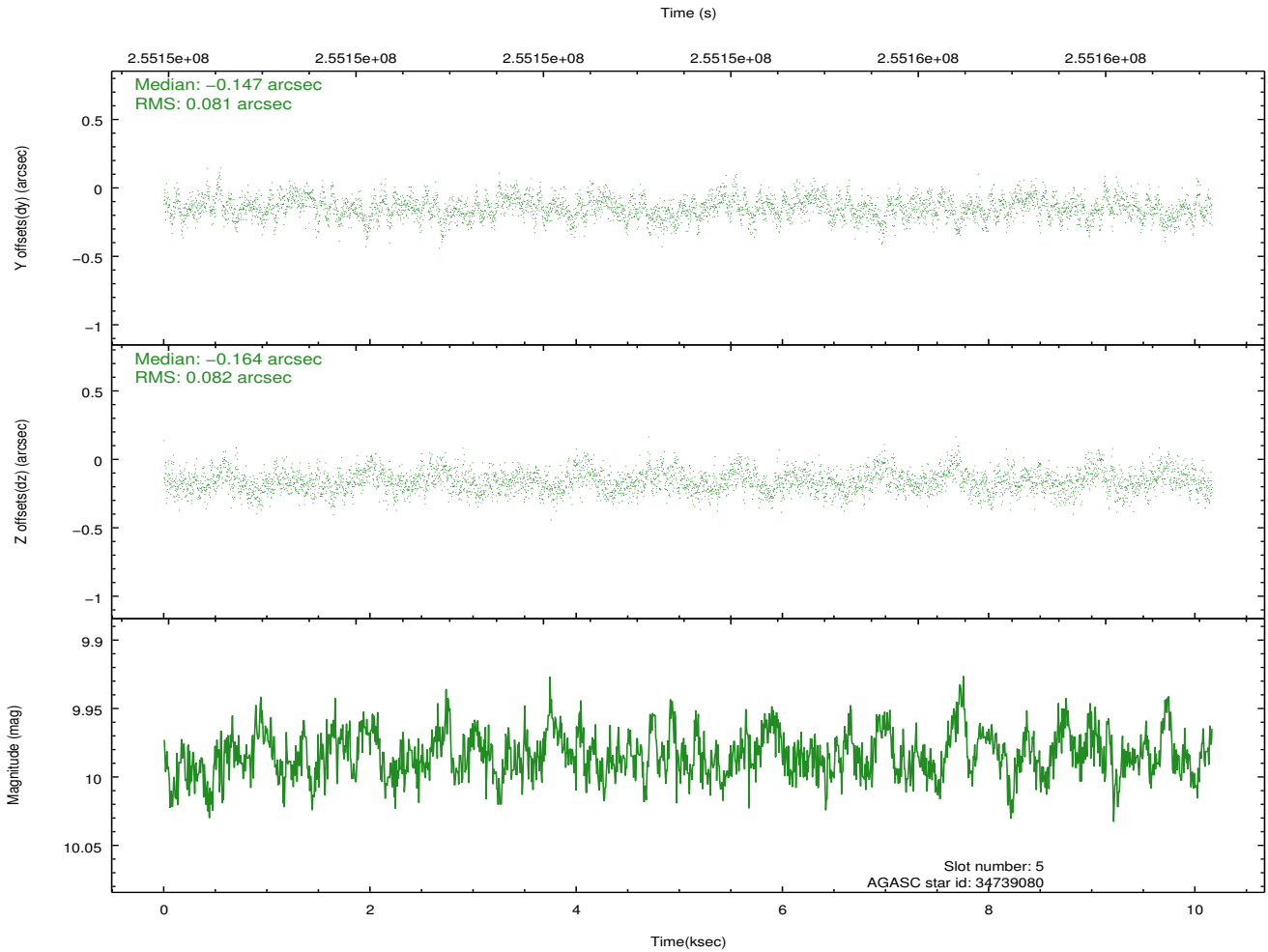
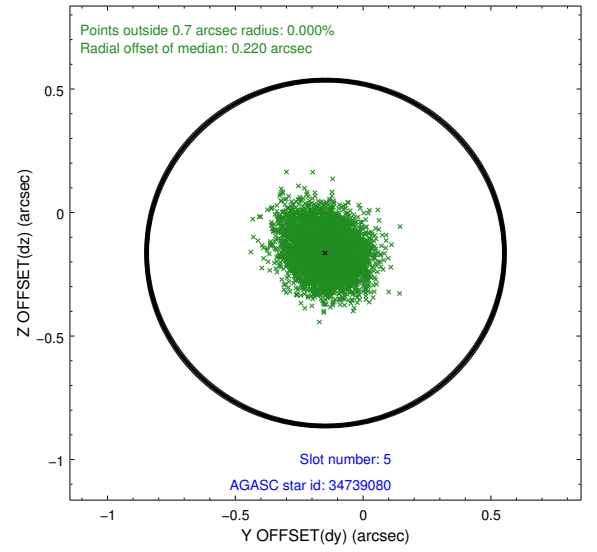
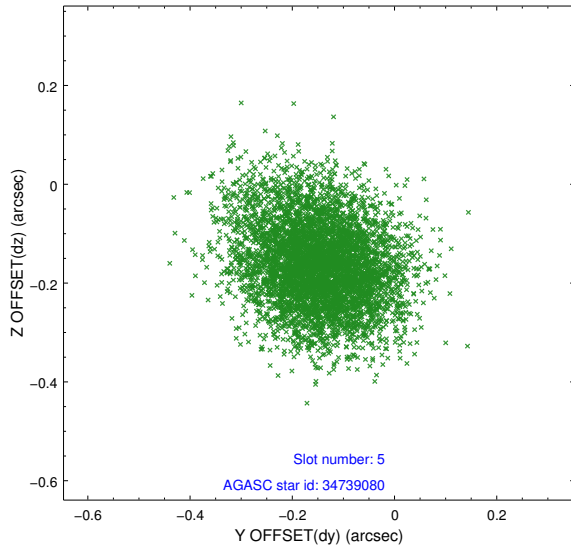
### 2.4.1 Slot 3



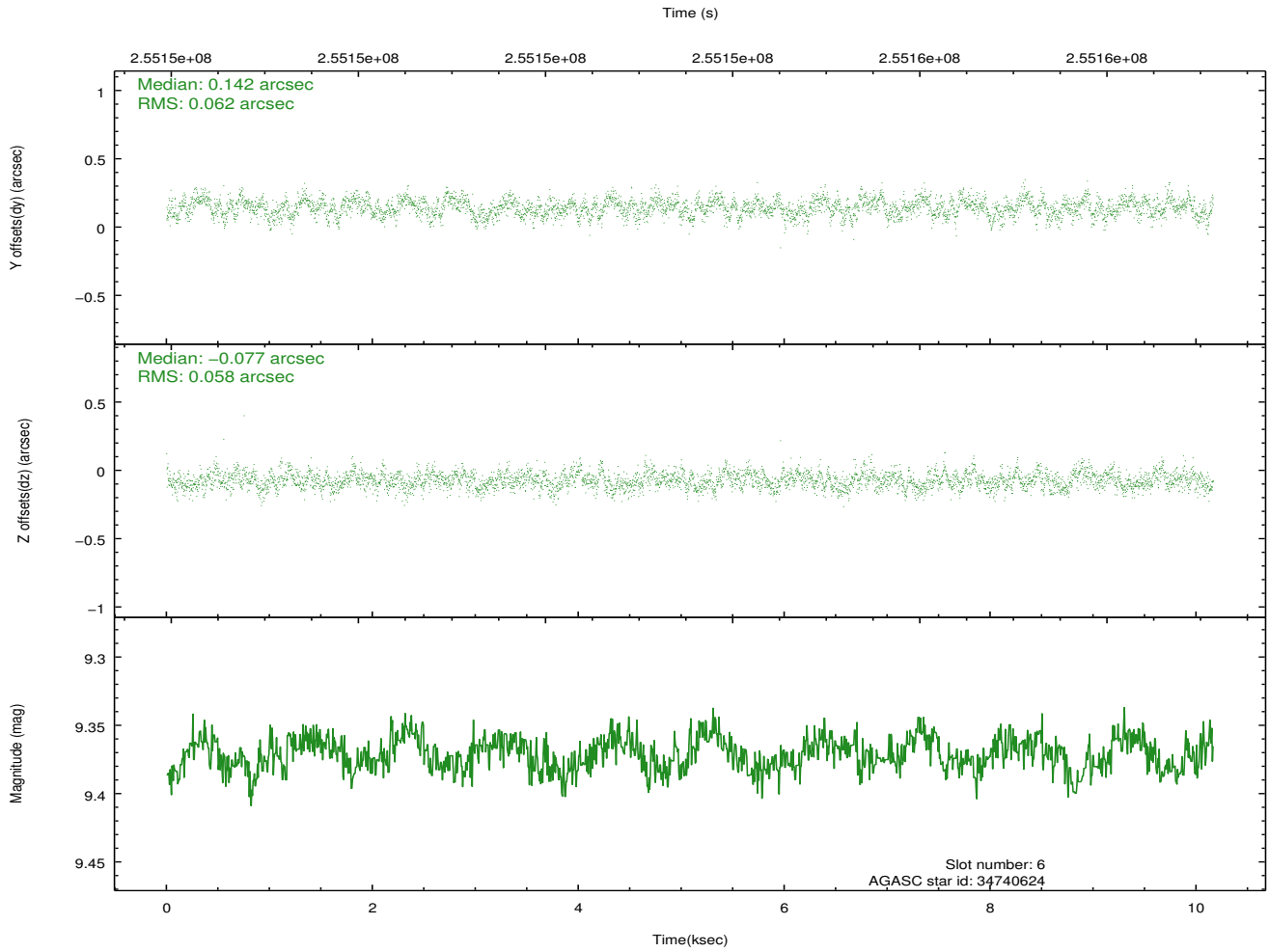
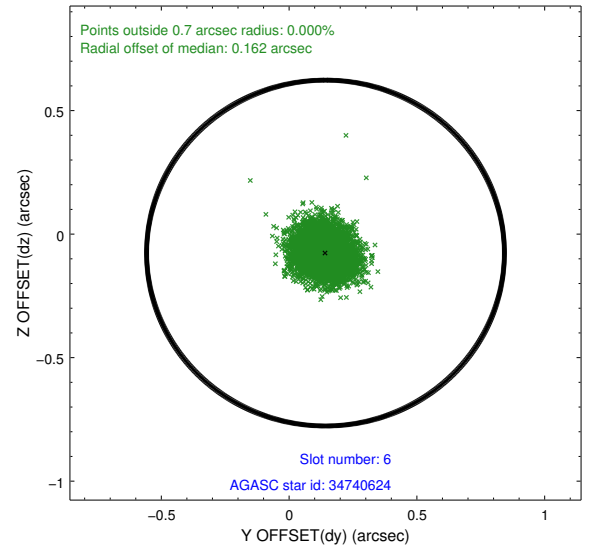
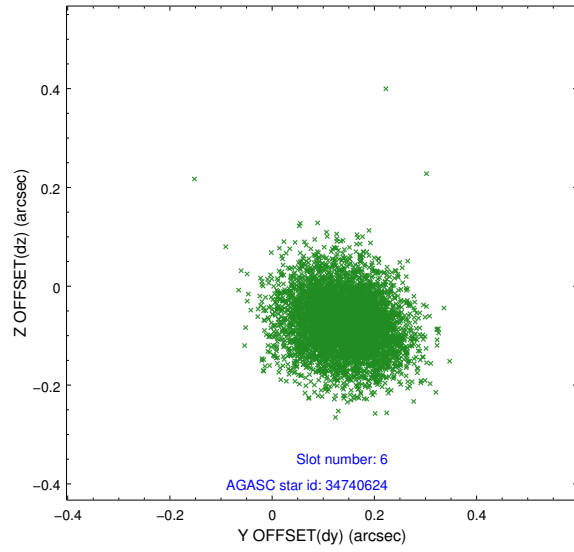
## 2.4.2 Slot 4



### 2.4.3 Slot 5

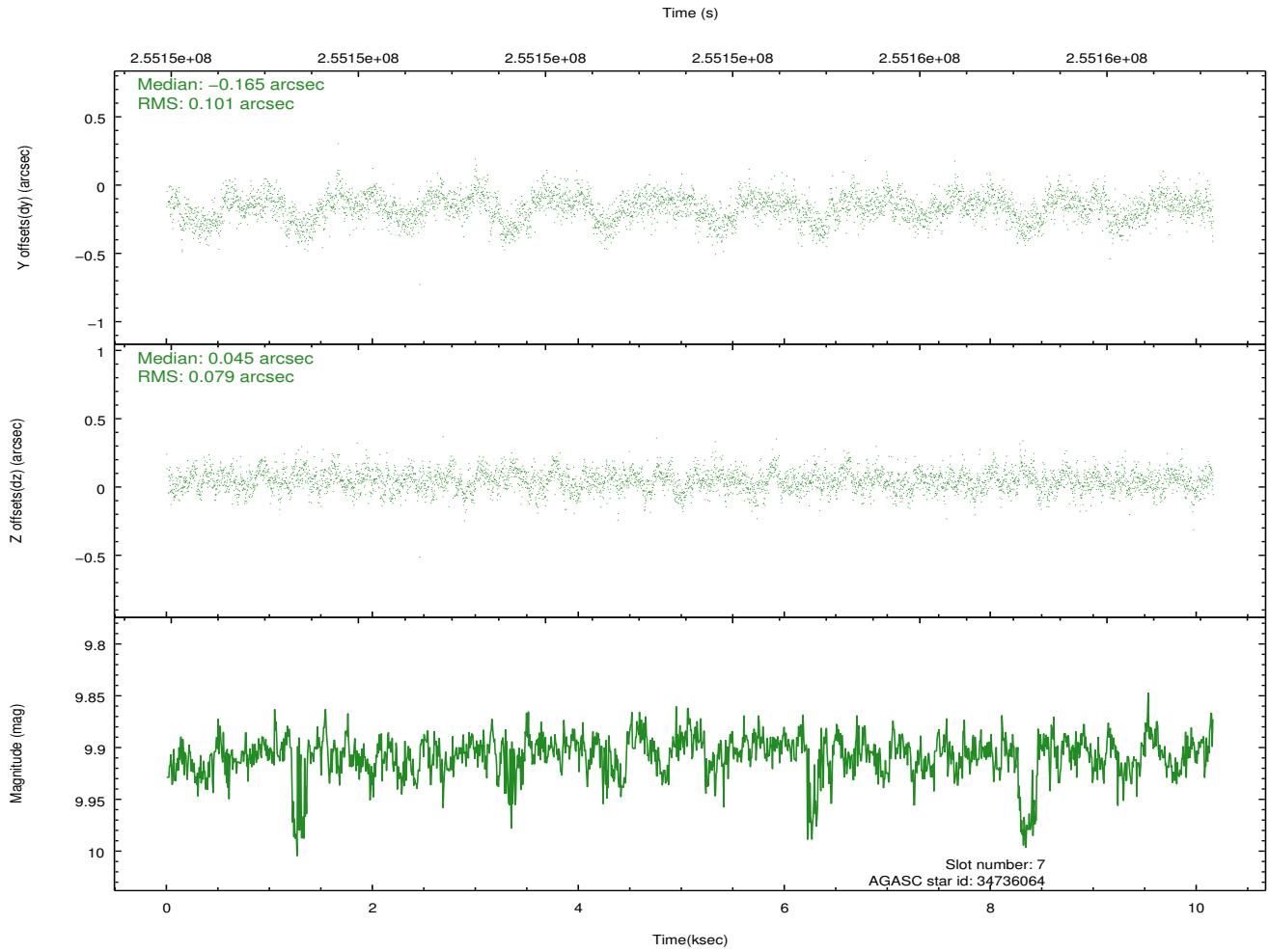
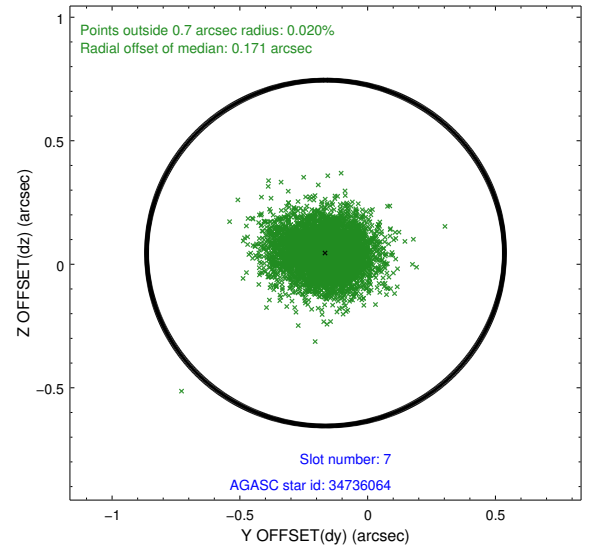
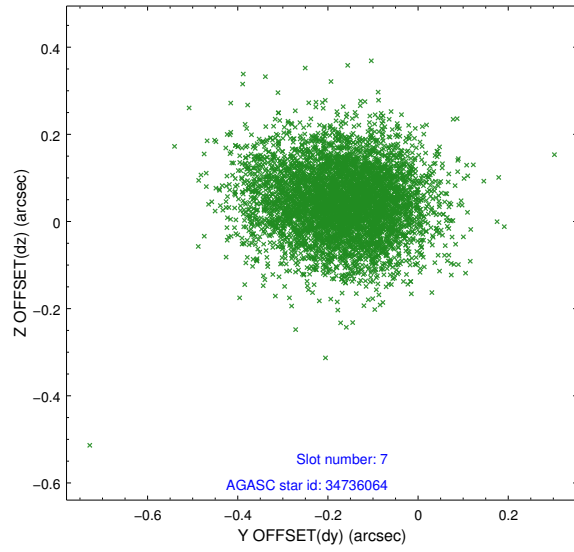


## 2.4.4 Slot 6



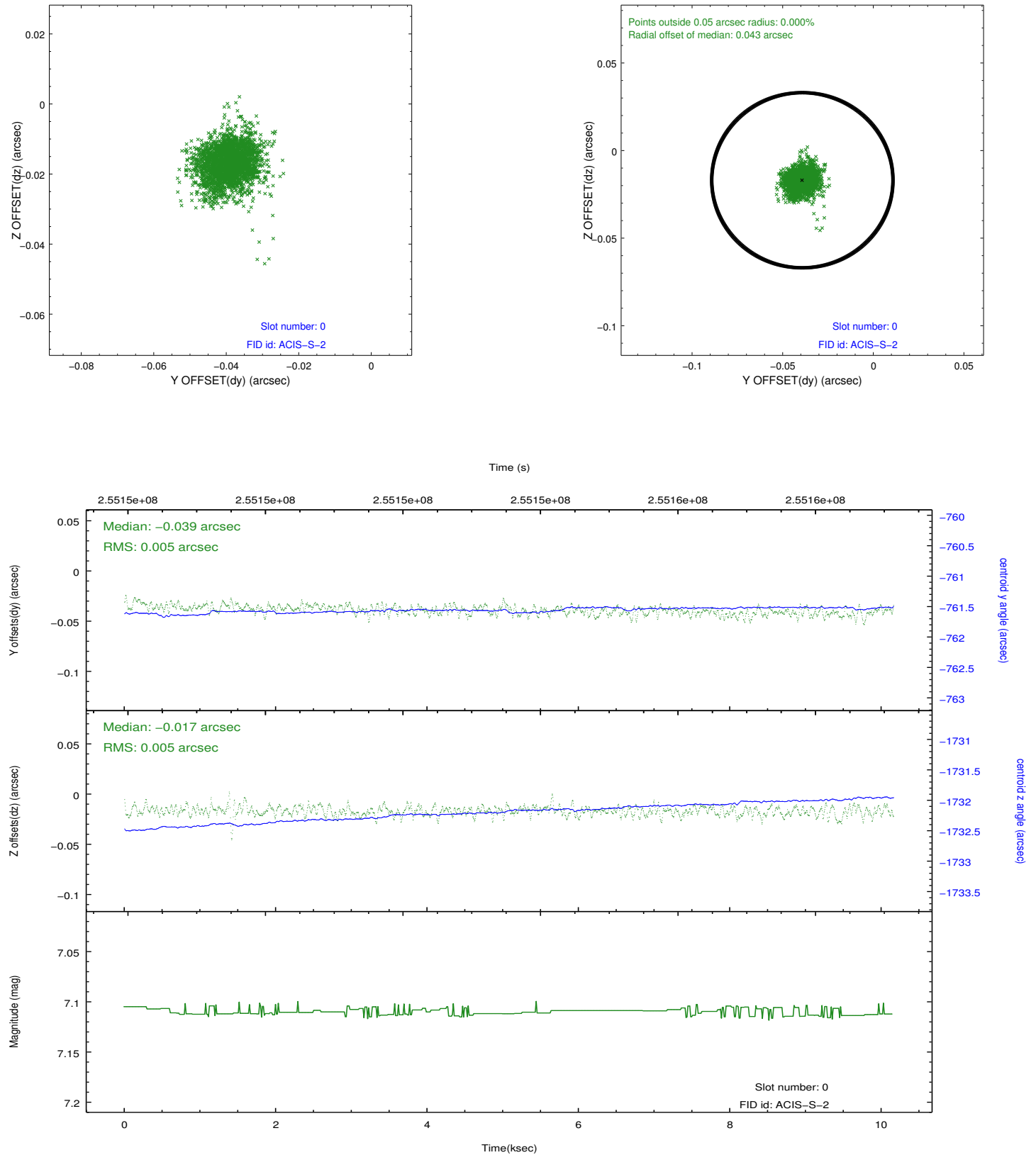


## 2.4.5 Slot 7

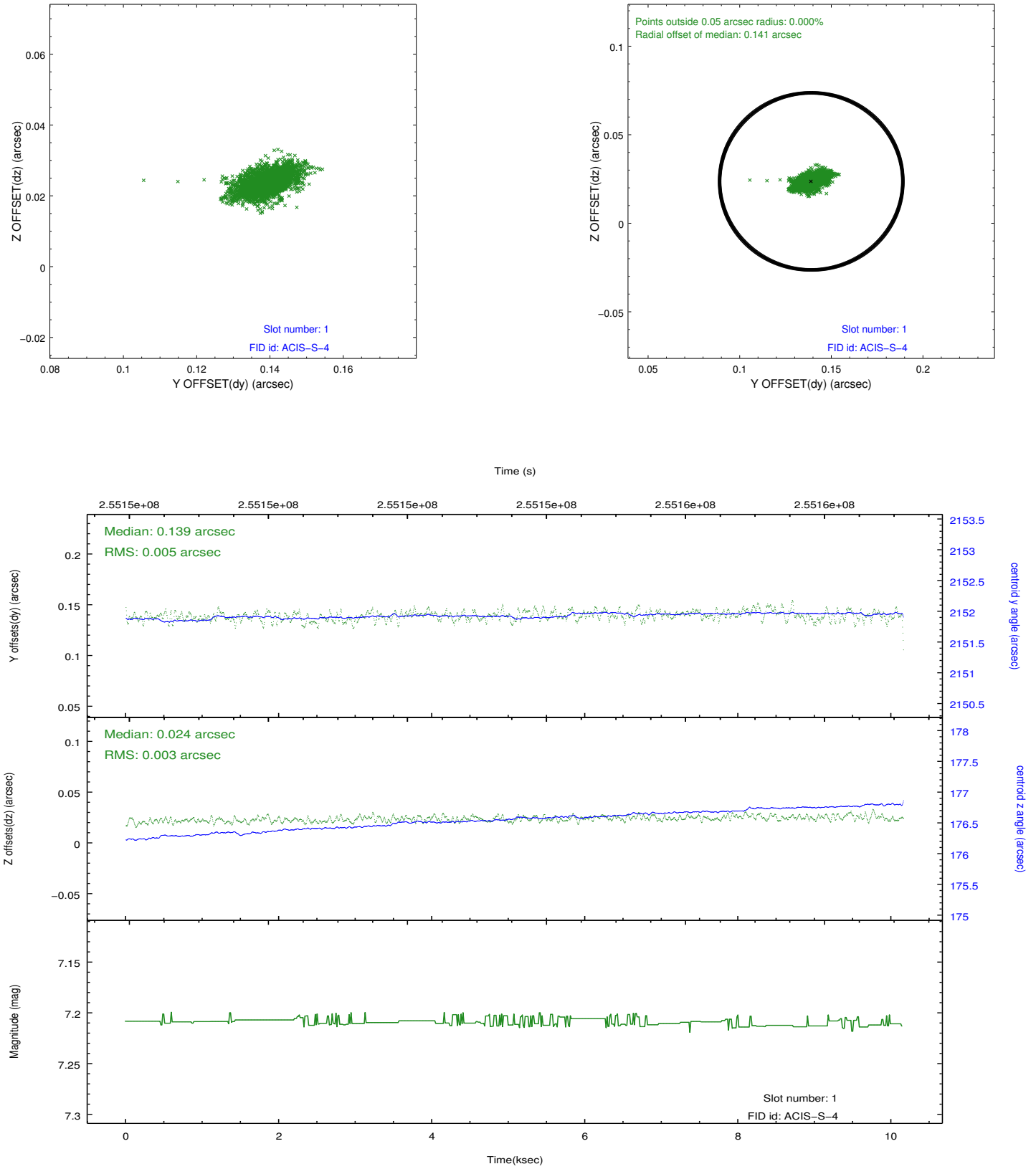


## 2.5 FID Slots

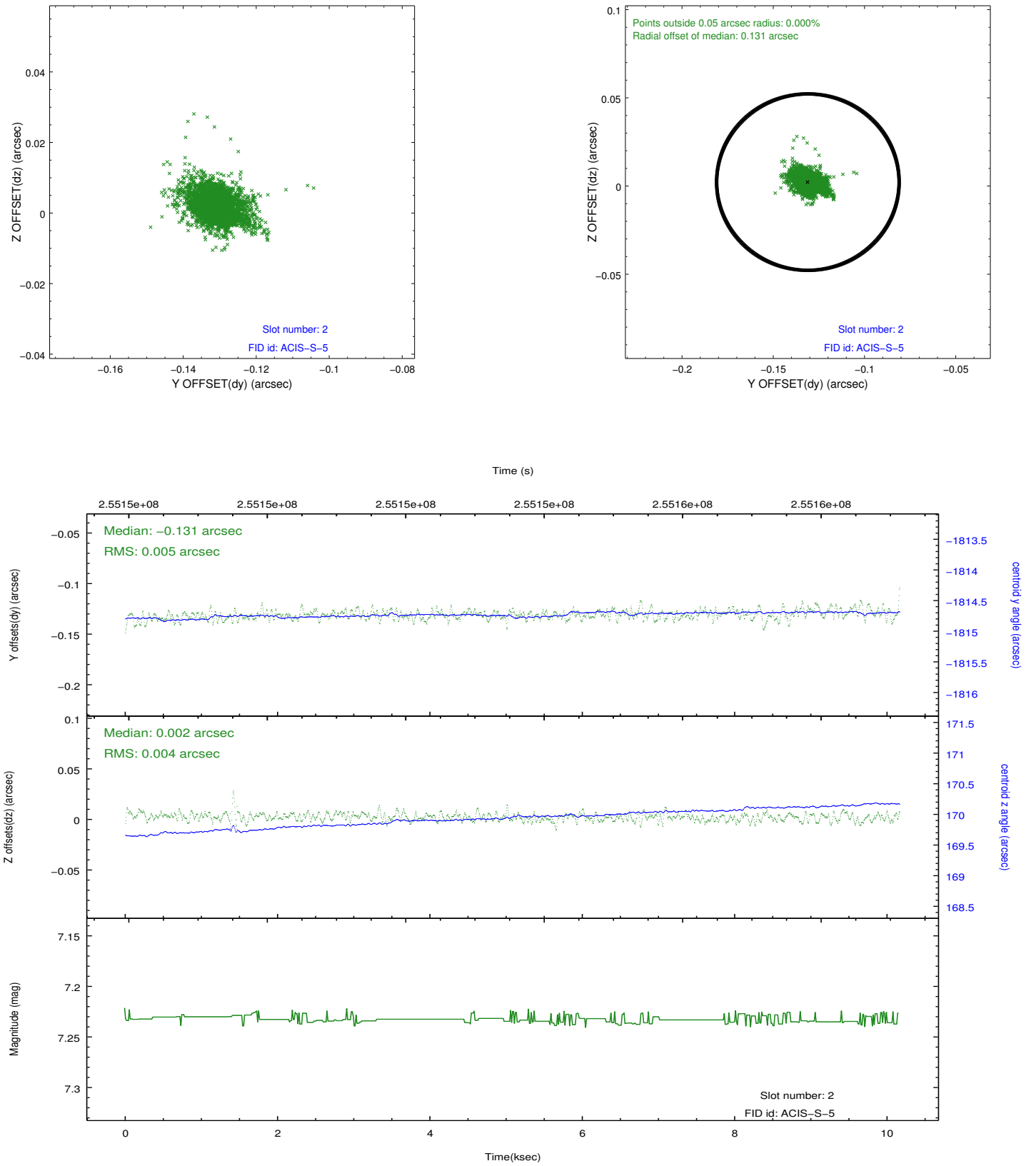
### 2.5.1 Slot 0



## 2.5.2 Slot 1



### 2.5.3 Slot 2



## A Summary

### A.1 Status

V&V Scientist	Jen Lauer
V&V Date (YYYY-MM-DD)	2012.03.27
V&V Edition	1
V&V Disposition and Status	OK
V&V Charge Time	10.1599999

### A.2 Comments