

# V&V Reference Report

## L2 ASCDS Version : 8.4.3.1

Observation 6576 - L2 Version 2  
Chandra X-Ray Center

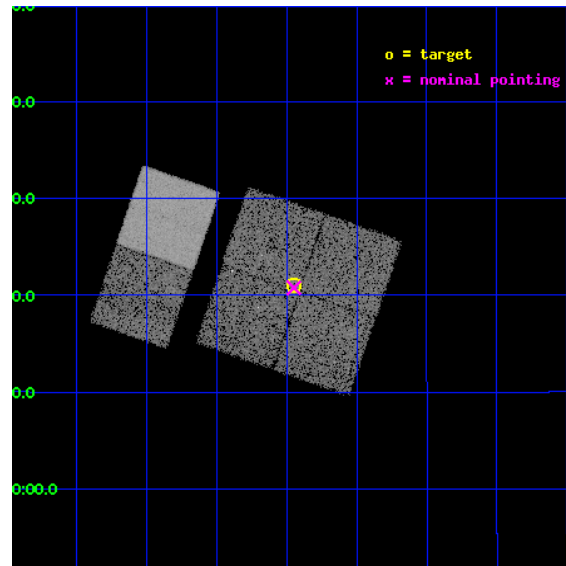
L2 Processing Date : Mar 24 2012

## Contents

<b>1</b>	<b>Front</b>	<b>2</b>
<b>2</b>	<b>OBI</b>	<b>3</b>
2.1	OBI . . . . .	3
2.1.1	Images . . . . .	3
2.1.2	Bias . . . . .	3
2.1.3	Parameters . . . . .	4
2.1.4	Events . . . . .	4
2.2	Compared Parameters . . . . .	5
2.3	Aspect . . . . .	6
2.4	Star Slots . . . . .	9
2.4.1	Slot 3 . . . . .	9
2.4.2	Slot 4 . . . . .	10
2.4.3	Slot 5 . . . . .	11
2.4.4	Slot 6 . . . . .	12
2.4.5	Slot 7 . . . . .	13
2.5	FID Slots . . . . .	14
2.5.1	Slot 0 . . . . .	14
2.5.2	Slot 1 . . . . .	15
2.5.3	Slot 2 . . . . .	16
<b>A</b>	<b>Summary</b>	<b>17</b>
A.1	Status . . . . .	17
A.2	Comments . . . . .	17

# 1 Front

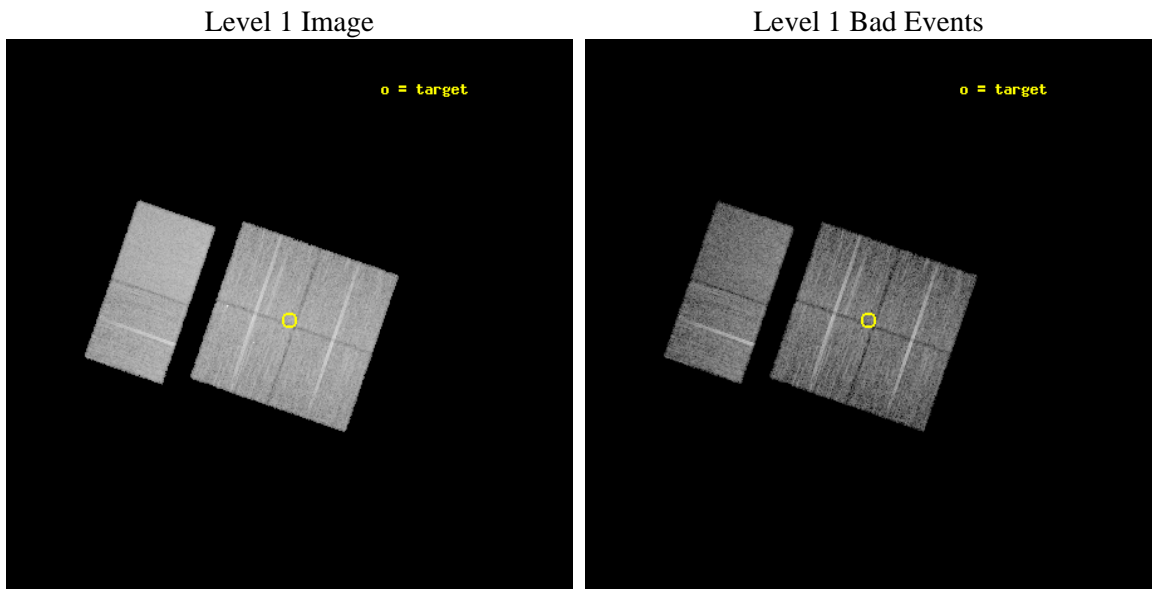
seq_num	400481	Sequence number
obs_id	6576	Observation id
title	X-ray Emission from Candidate Massive Star Clusters	Proposal title
observer	Professor Gordon Garmire	Principal investigator
object	Sh2-271	Source name
dtcycle	0	&#160
cycle	P	events from which exps? Prim/Second/Both
ra_targ	93.7375	Observer's specified target RA [deg]
dec_targ	12.350833	Observer's specified target Dec [deg]
ra_nom	93.737192466888	Nominal RA [deg]
dec_nom	12.346263969589	Nominal Dec [deg]
roll_nom	289.06742685179	Nominal Roll [deg]
revision	2	Processing version of data
ontime	9957.6195324659	Sum of GTIs [s]
livetime	9831.5301581872	Livetime [s]
ontime0	9957.4964124858	Sum of GTIs [s]
ontime1	9957.5374524593	Sum of GTIs [s]
ontime2	9957.5784924626	Sum of GTIs [s]
ontime3	9957.6195324659	Sum of GTIs [s]
ontime6	9957.7016124725	Sum of GTIs [s]
ontime7	9957.6605724692	Sum of GTIs [s]
l2events	87289	Number of level 2 events



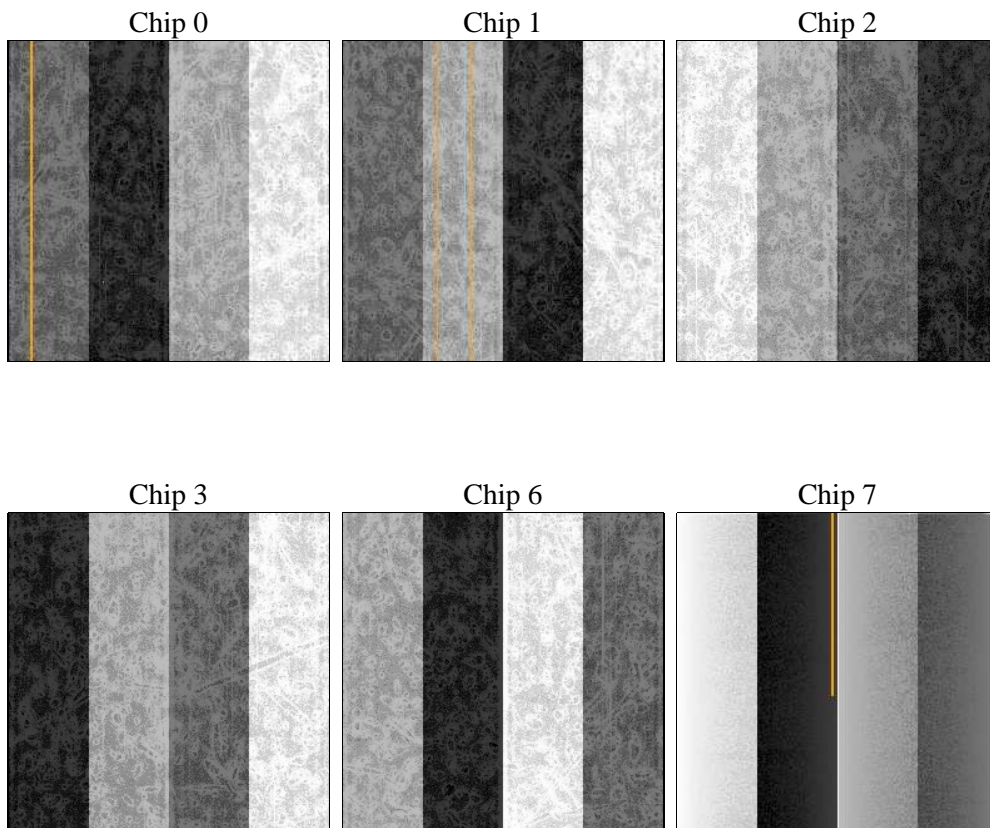
## 2 OBI

### 2.1 OBI

#### 2.1.1 Images



#### 2.1.2 Bias



### 2.1.3 Parameters

obi_num	0	Obi number	sched_exp_time	10000.000000	[s] Scheduled observation exposure time
ascdsver	8.4.3.1	Processing system revision	ontime	9957.6195324659	Sum of GTIs [s]
caldbver	4.4.8	&#160	ontime0	9957.4964124858	Sum of GTIs [s]
date	2012-03-24T05:55:45	Date and time of file creation	ontime1	9957.5374524593	Sum of GTIs [s]
revision	2	Processing version of data	ontime2	9957.5784924626	Sum of GTIs [s]
			ontime3	9957.6195324659	Sum of GTIs [s]
			ontime6	9957.7016124725	Sum of GTIs [s]
			ontime7	9957.6605724692	Sum of GTIs [s]
			l1events	504783	Number of level 1 events

### 2.1.4 Events

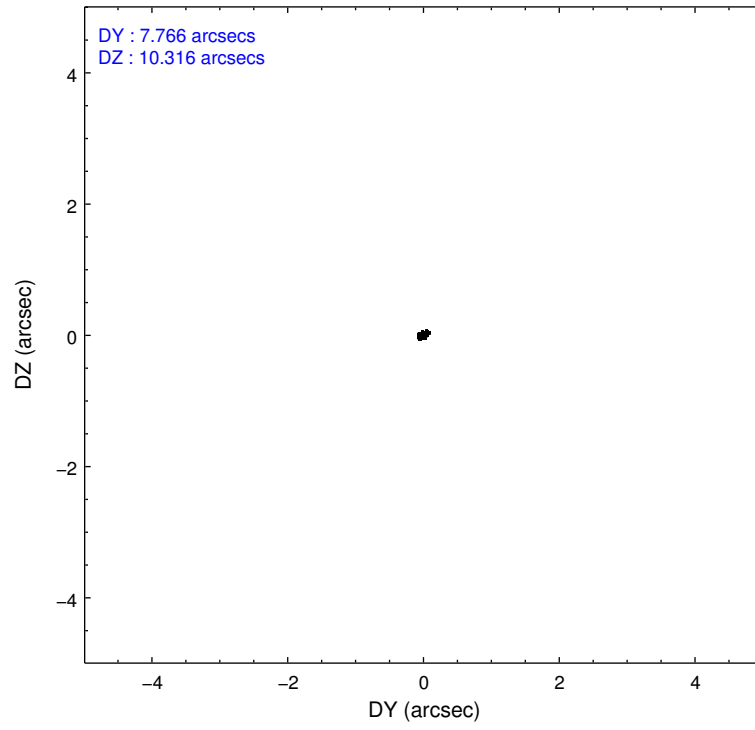
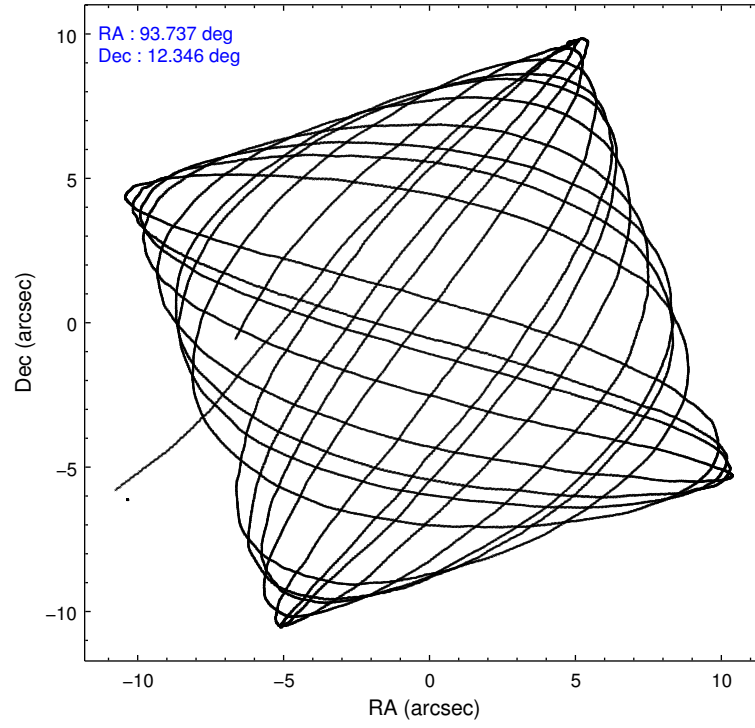
	ccd 0	ccd 1	ccd 2	ccd 3	ccd 6	ccd 7		ccd 0	ccd 1	ccd 2	ccd 3	ccd 6	ccd 7
level 1 events	72351	75049	81687	80502	84338	110856	grade 0 events	4347	3947	4739	4130	3580	3904
rejected events	62315	64789	71524	70942	74700	65329		6%	5%	5%	5%	4%	3%
rejected %	86%	86%	87%	88%	88%	58%	grade 1 events	60	32	51	55	38	105
								0%	0%	0%	0%	0%	0%
							grade 2 events	2164	2299	2065	1939	2127	8963
								2%	3%	2%	2%	2%	8%
							grade 3 events	959	983	828	921	995	3961
								1%	1%	1%	1%	1%	3%
							grade 4 events	891	989	951	906	912	3811
								1%	1%	1%	1%	1%	3%
							grade 5 events	3183	3459	3144	3790	3881	10392
								4%	4%	3%	4%	4%	9%
							grade 6 events	1681	2049	1588	1670	2026	24918
								2%	2%	1%	2%	2%	22%
							grade 7 events	59066	61291	68321	67091	70779	54802
								81%	81%	83%	83%	83%	49%

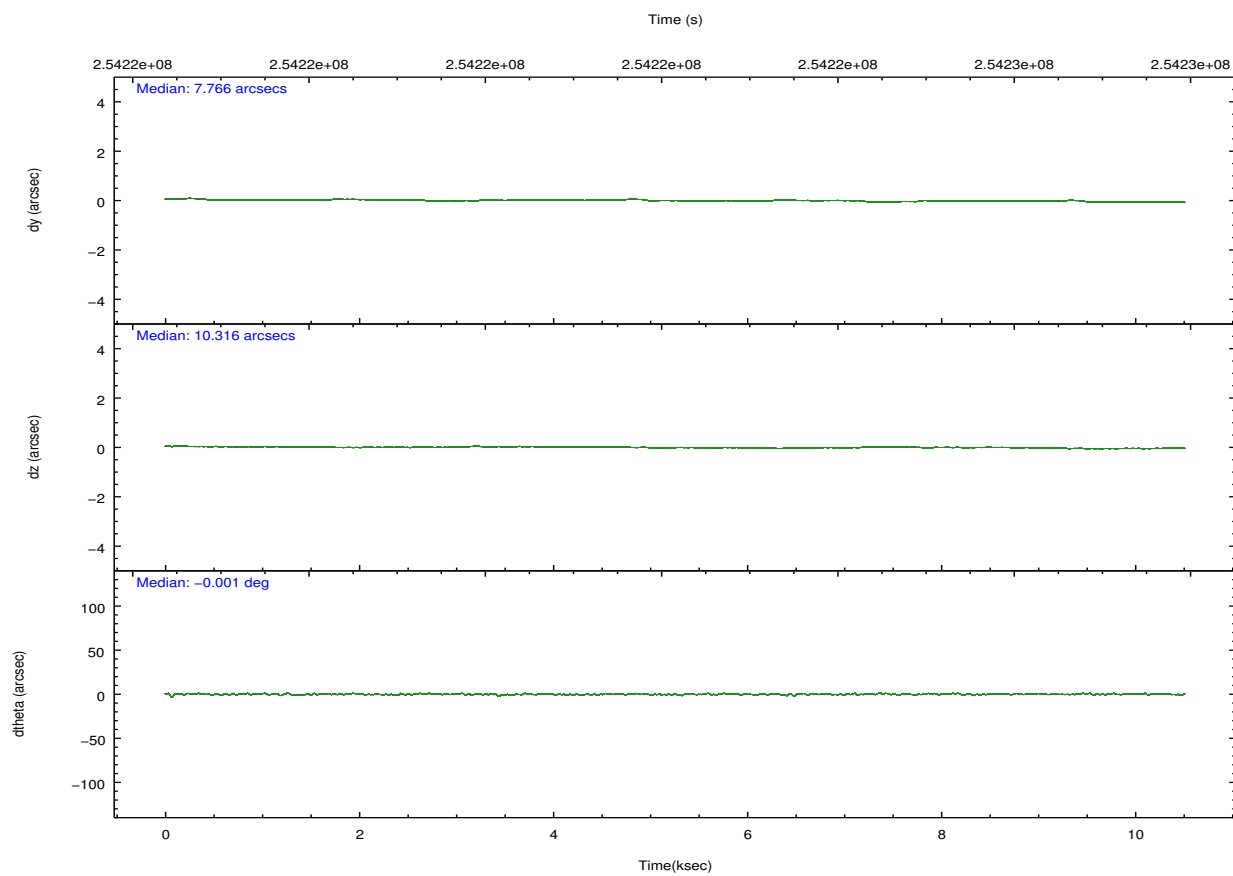
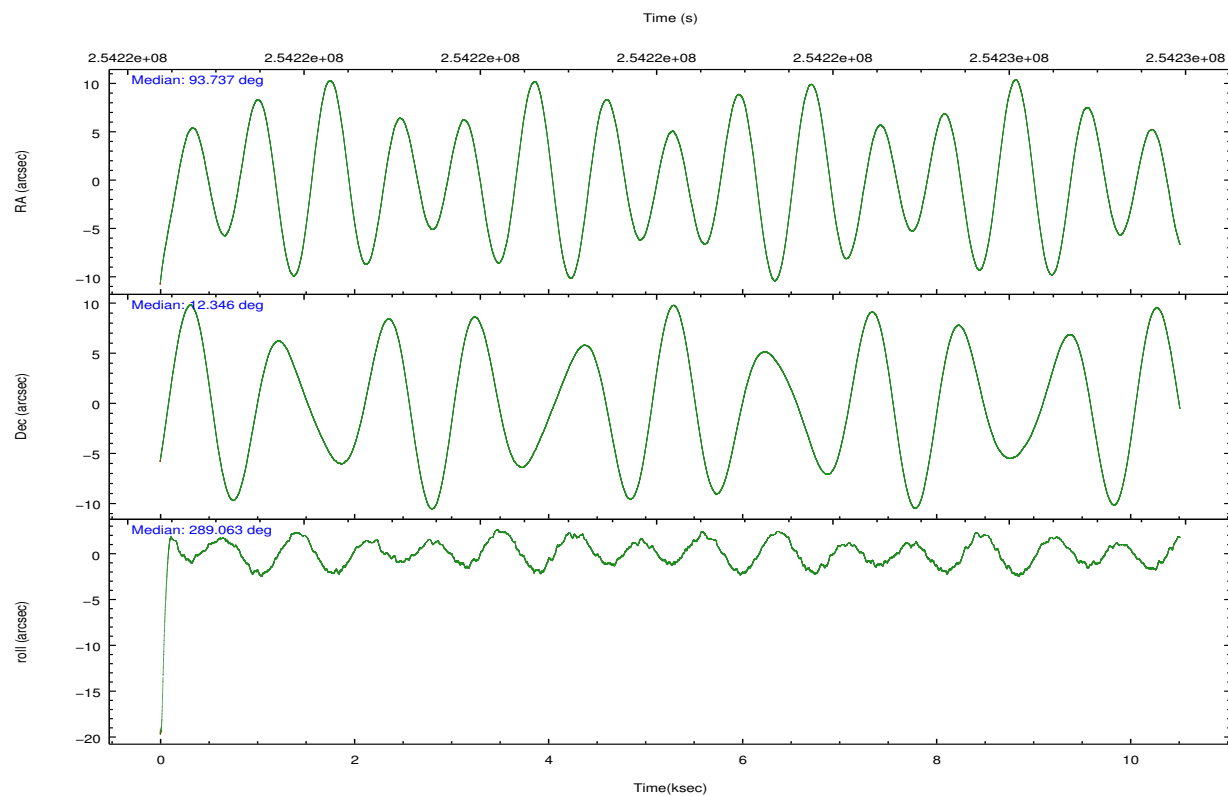


## 2.2 Compared Parameters

Parameter	Planned	Actual	Parameter	Planned	Actual
Instrument	ACIS	ACIS	Obspar format version number	7	7
Detector	ACIS-012367	ACIS-012367	Obspar file type	PREDICTED	ACTUAL
Grating	NONE	NONE	Obspar update status	NONE	UPDATED
Data mode	FAINT	FAINT	Number of optional ACIS chips dropped	0	0
Observation mode	POINTING	POINTING	On-chip summing requested	N	N
[deg] Pointing RA	93.715924	93.7371924668882	Subarray requested	NONE	NONE
[deg] Pointing Dec	12.364066	12.34626396958917	Alternating exposures requested	N	N
[deg] Pointing Roll	288.863317	289.0674268517877	[s] Primary exposure time	0.000000	3.2
[mm] SIM focus pos	-0.782348	-0.7809083437167272			
[mm] SIM defocus	0	0.001439871863259334			
[mm] SIM translation stage pos	-233.592463	-233.5874344608287			
[mm] SIM translation stage offset	0	-0.005018542100998502			
[s] Observation start time (MET)	254217406.184000	254216278.8723			
Observation start date	2006-01-21T07:55:41	2006-01-21T07:37:58			
[s] Observation end time (MET)	254227406.184000	254228510.19787			
Observation end date	2006-01-21T10:42:21	2006-01-21T11:01:50			
Read mode	TIMED	TIMED			

## 2.3 Aspect



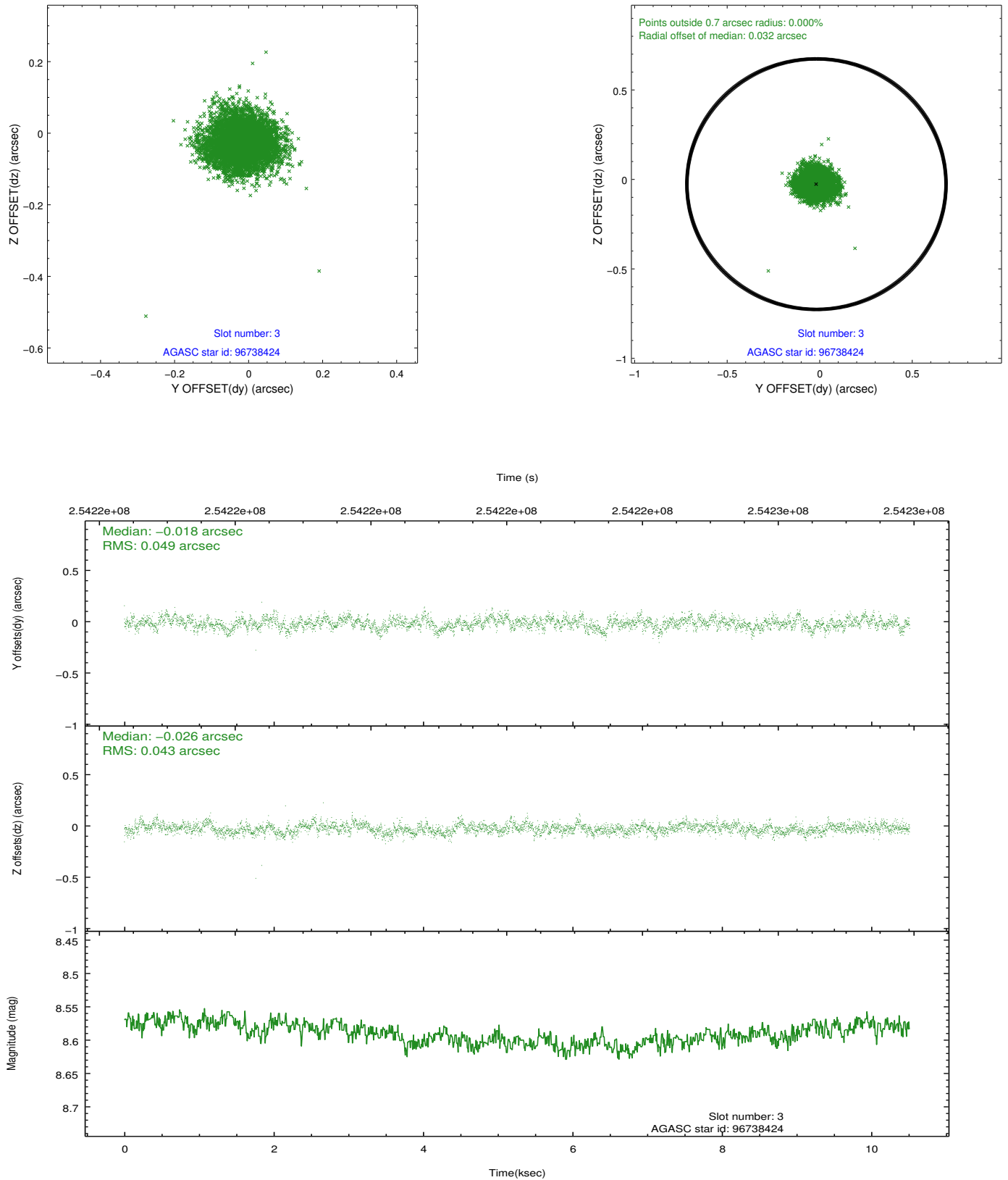


### Slot Statistics

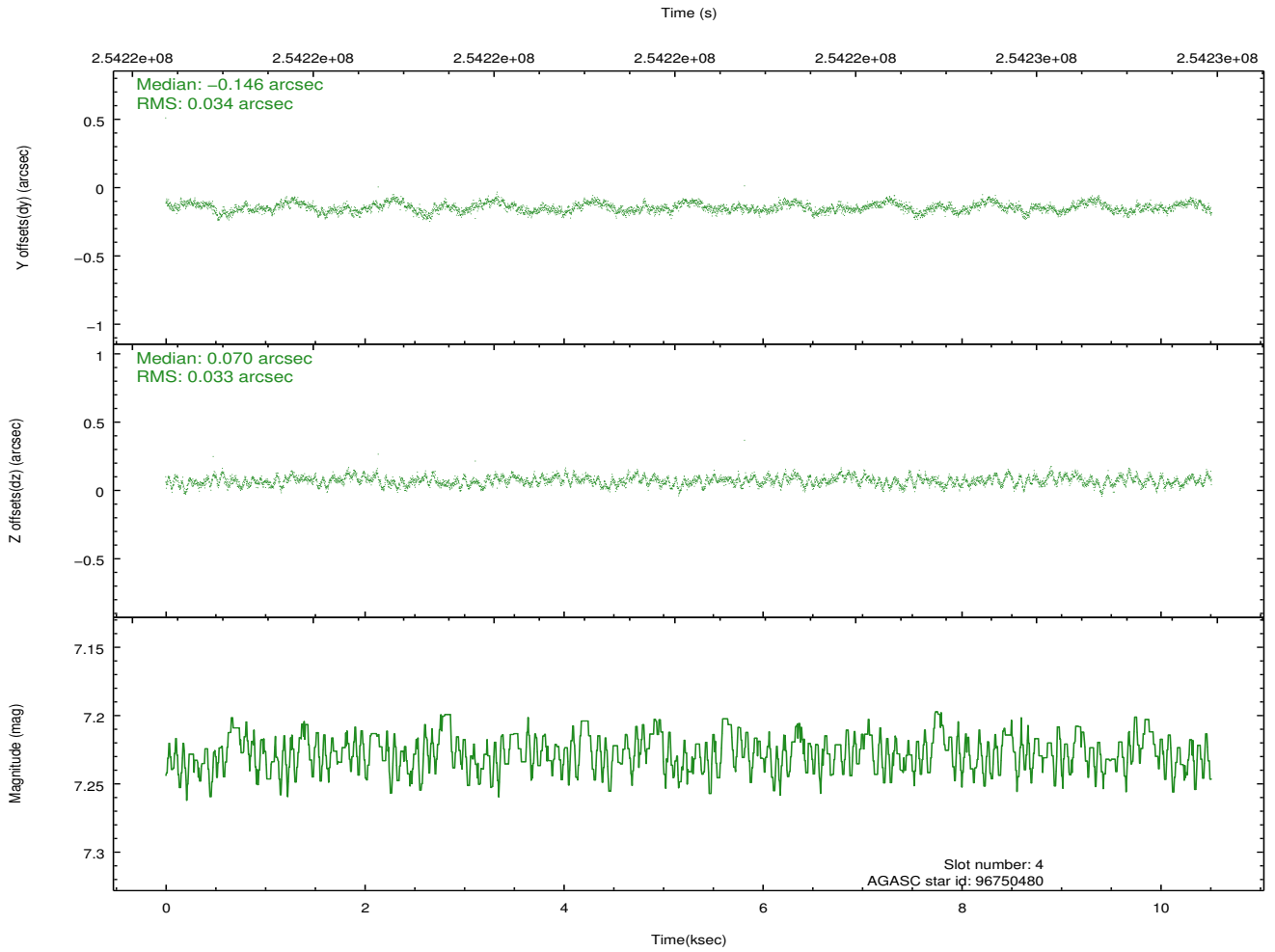
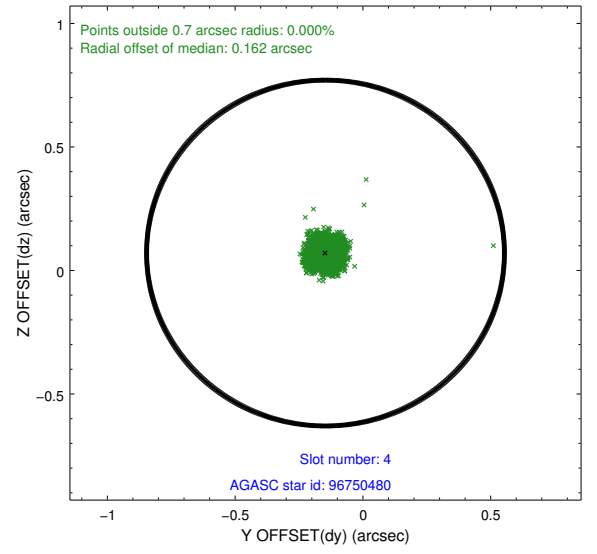
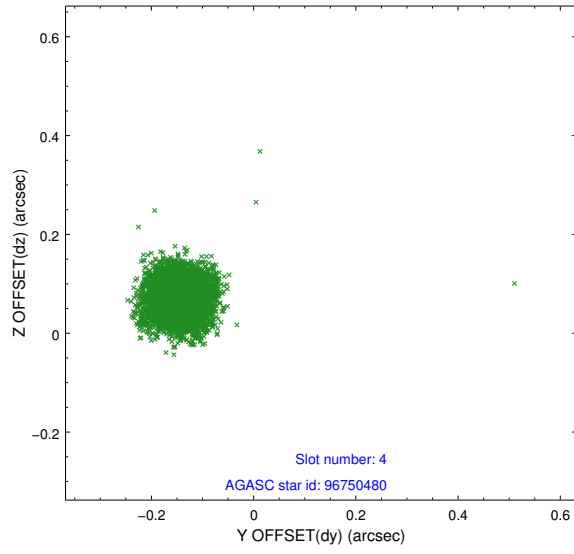
slot	status	id	mag	n_pts	med_dy	med_dz	dr1	dr2	ra	dec	mean_y	mean_z
0	FID	ACIS-I-1	7.24	2565	-0.017	-0.006	0.009	0.016	0.000000	0.000000	931.87	-833.81
1	FID	ACIS-I-4	7.17	2565	0.164	0.036	0.008	0.013	0.000000	0.000000	2152.39	1065.78
2	FID	ACIS-I-5	7.22	2564	-0.245	0.041	0.007	0.013	0.000000	0.000000	-1815.70	1064.24
3	GUIDE	96738424	8.59	5126	-0.018	-0.026	0.070	0.113	93.788870	13.046251	-2241.01	1036.09
4	GUIDE	96750480	7.23	5128	-0.146	0.070	0.050	0.078	92.965478	12.470629	-1219.44	-2370.66
5	GUIDE	96874304	8.25	5129	-0.046	-0.100	0.065	0.103	94.193275	12.867194	-1173.87	2170.96
6	GUIDE	96875112	8.04	5128	0.113	-0.063	0.053	0.085	94.026405	11.948184	1769.88	551.47
7	GUIDE	96733056	7.03	5128	0.095	0.124	0.059	0.090	93.629727	11.796936	1834.76	-947.09

## 2.4 Star Slots

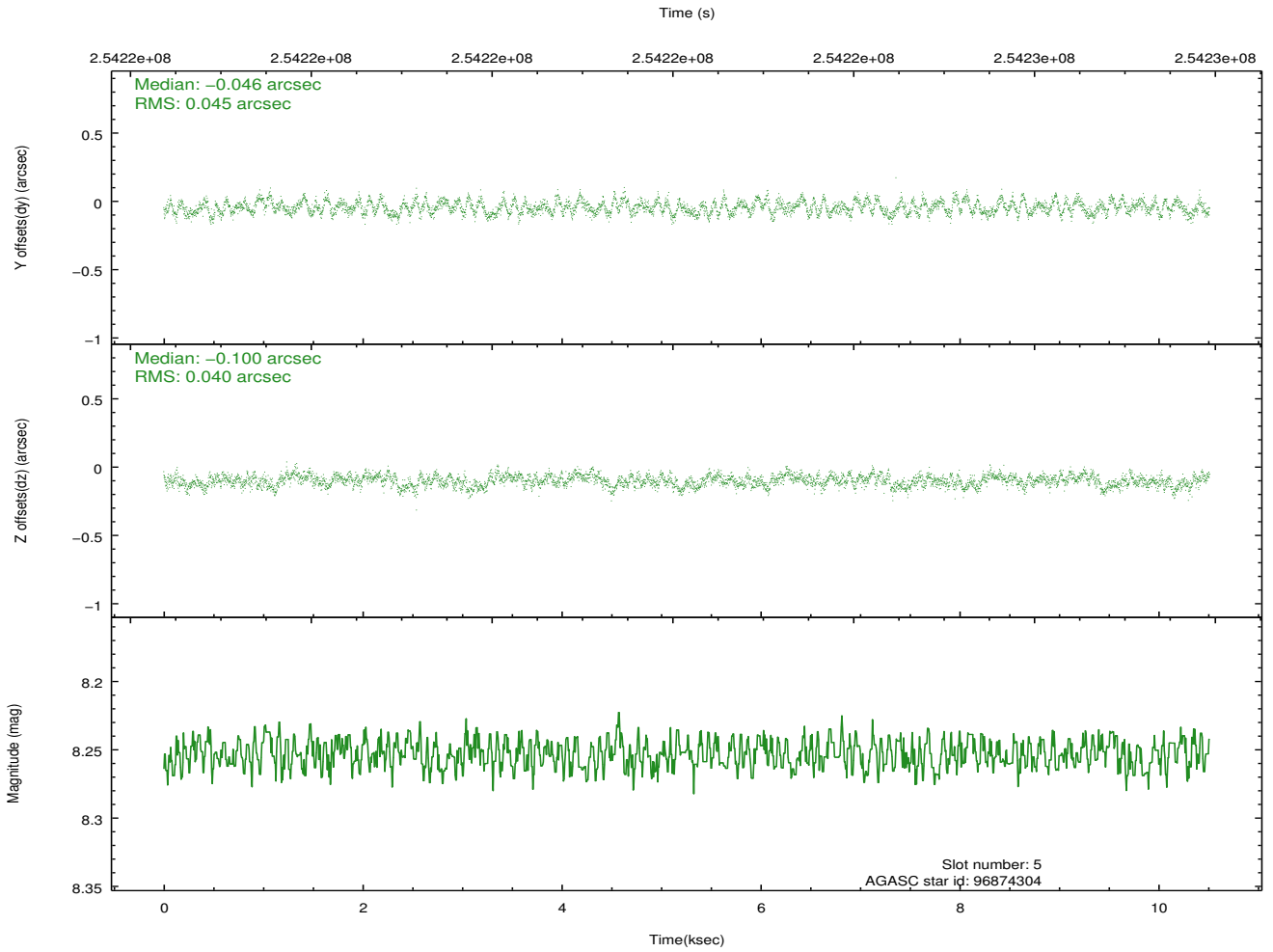
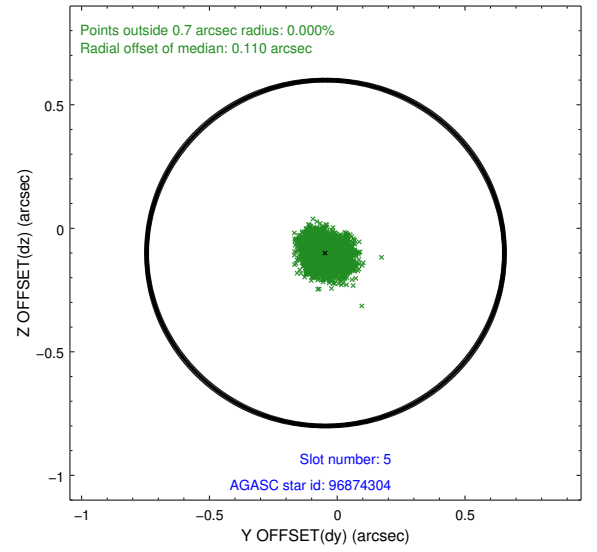
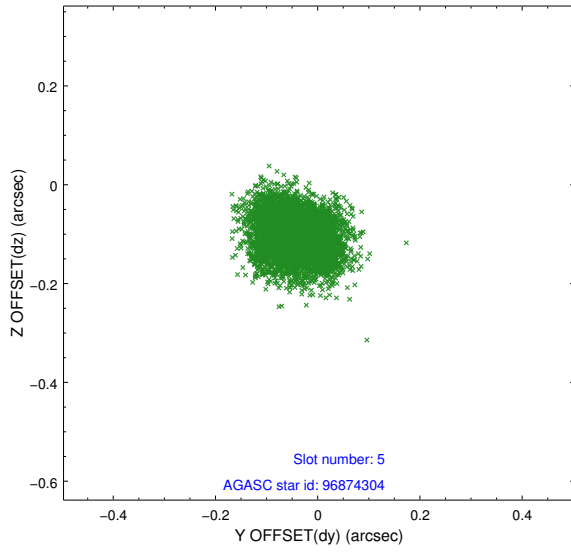
### 2.4.1 Slot 3



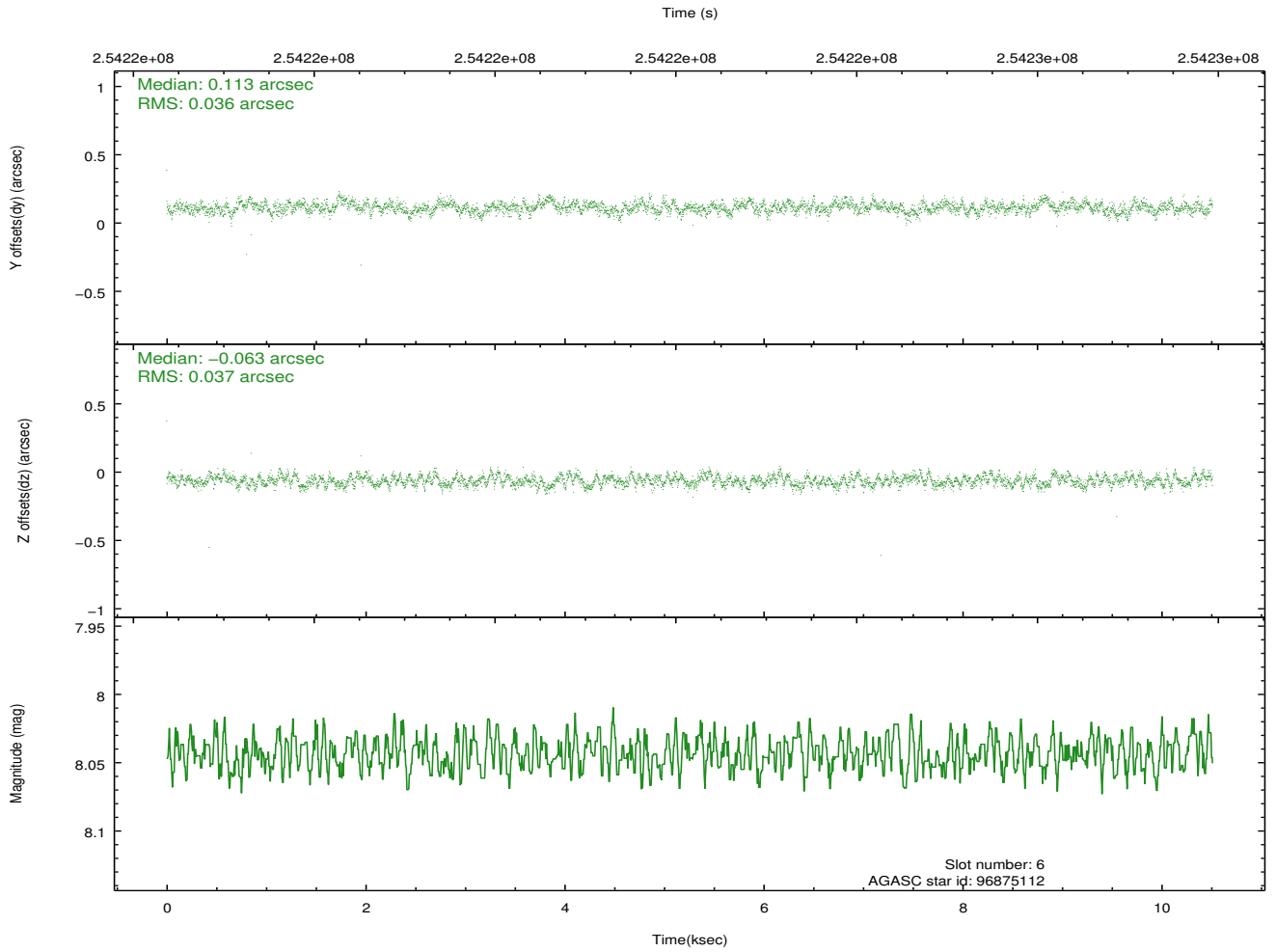
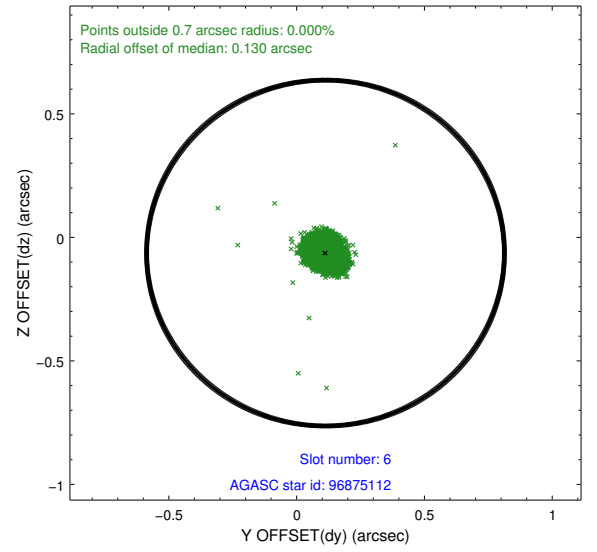
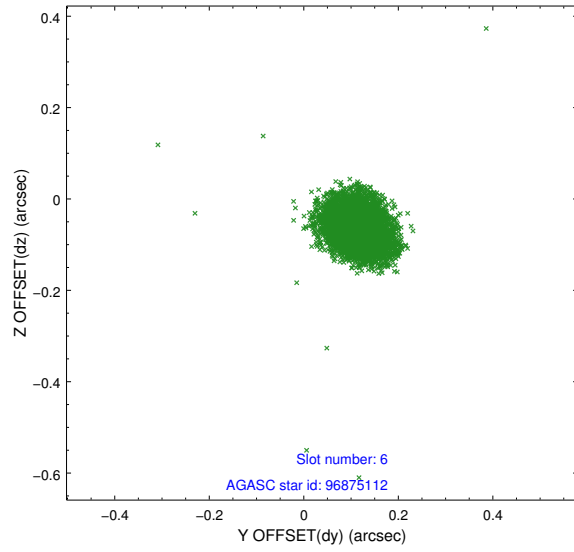
## 2.4.2 Slot 4



### 2.4.3 Slot 5

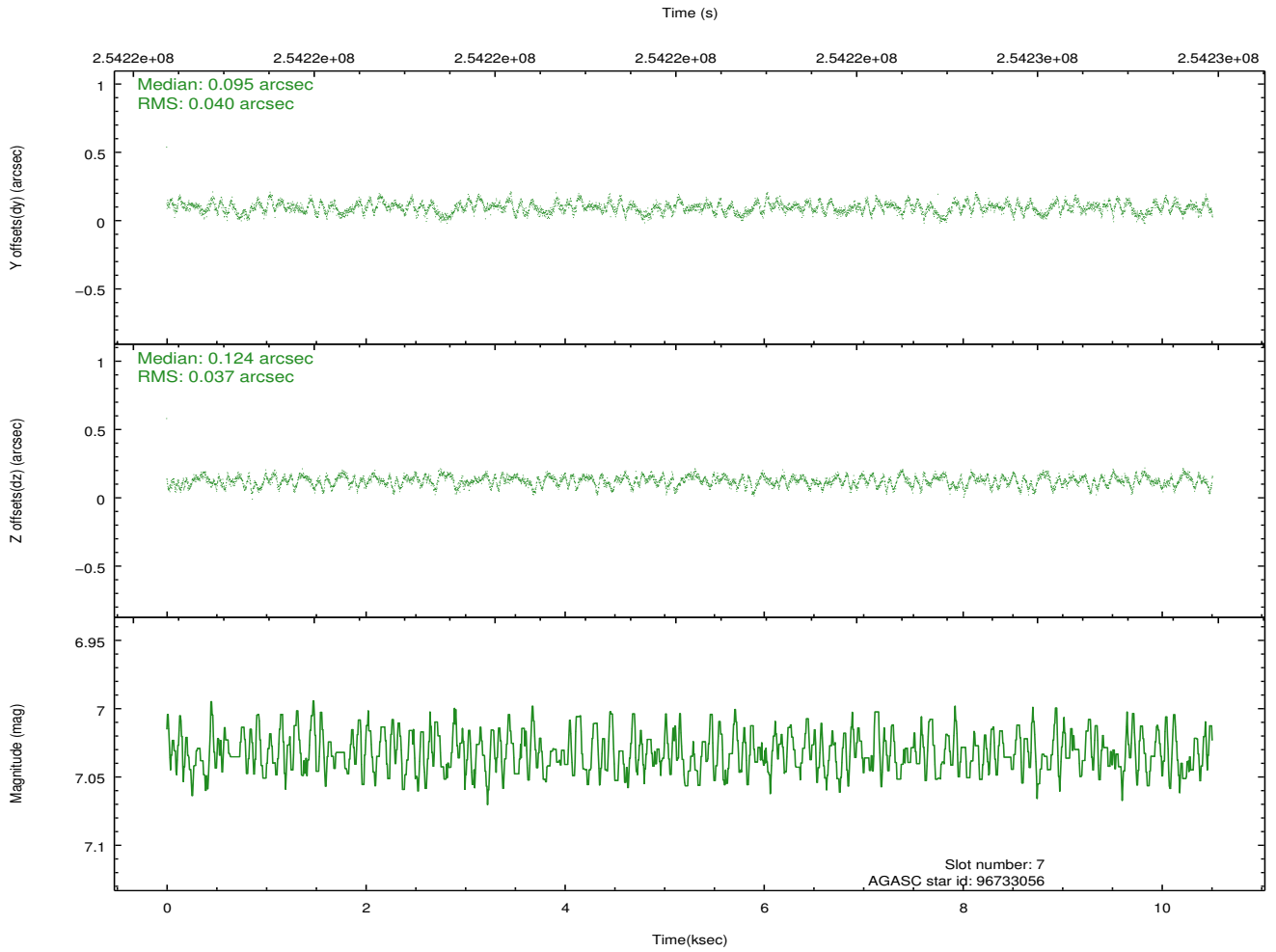
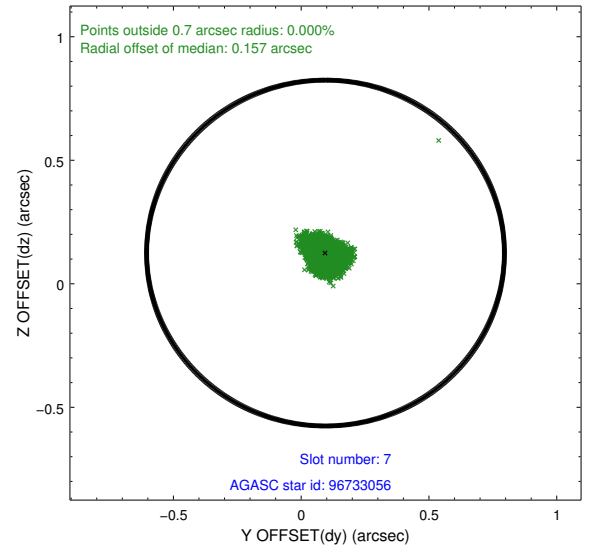
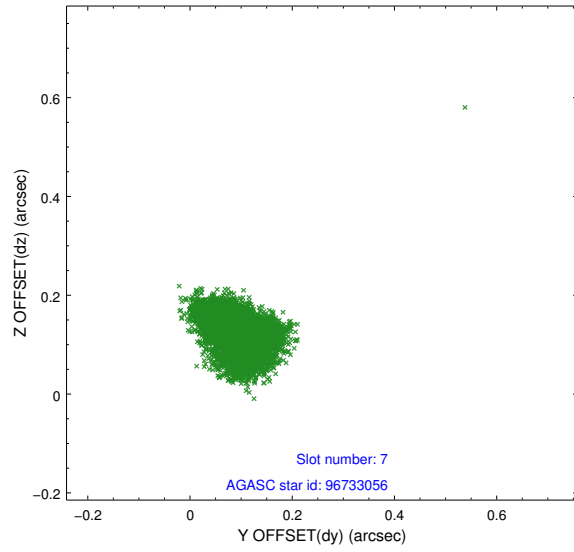


## 2.4.4 Slot 6



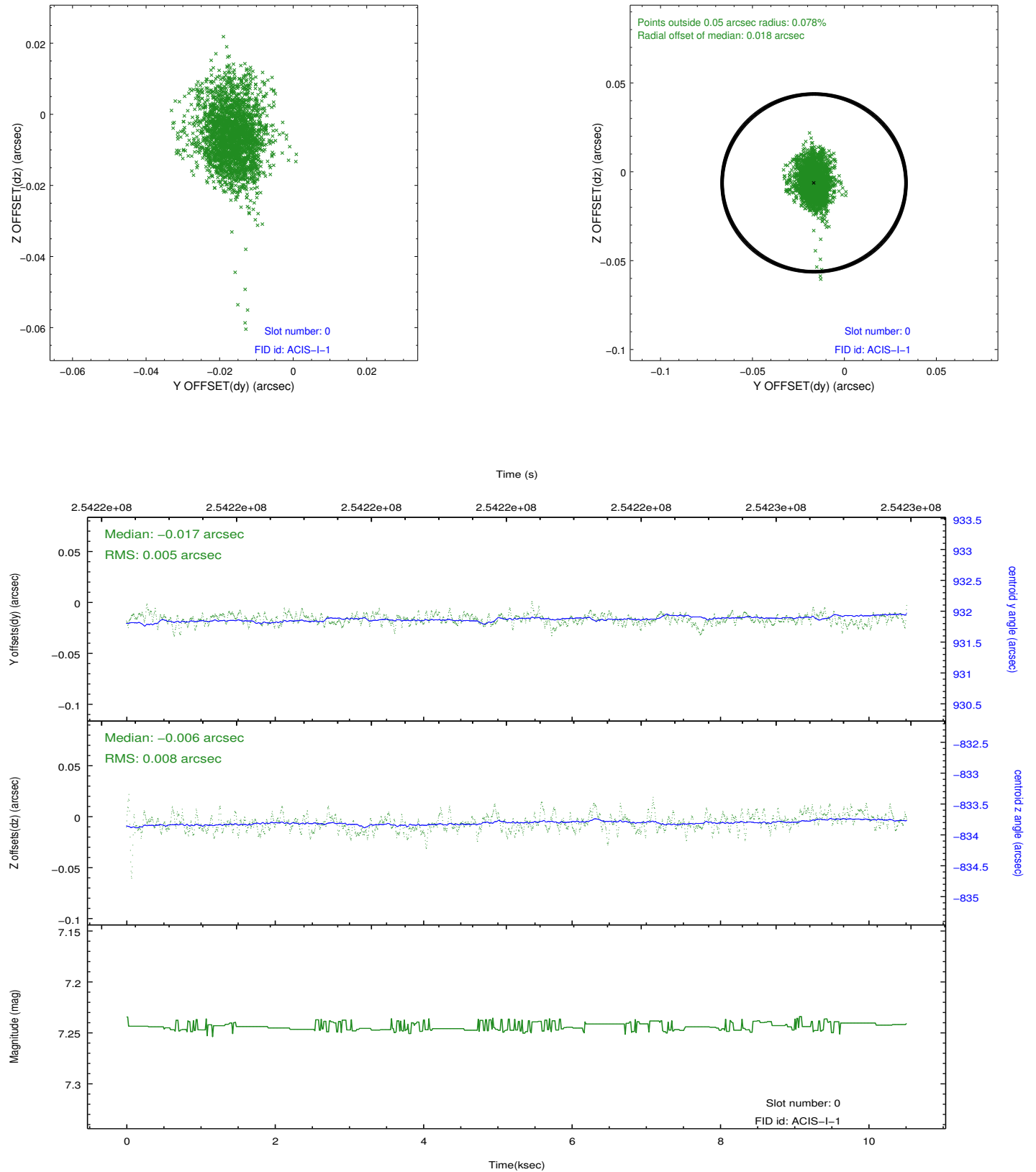


## 2.4.5 Slot 7

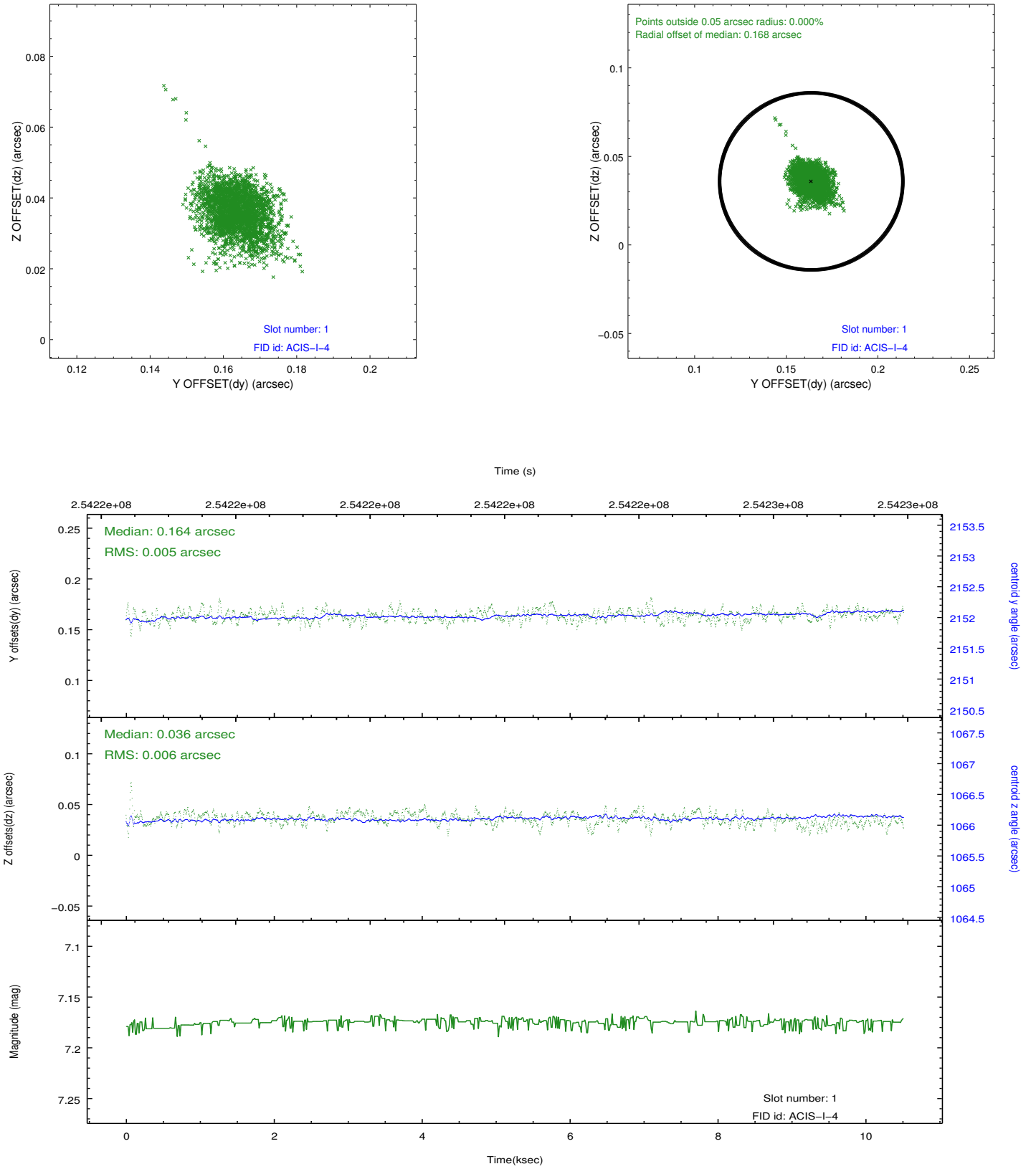


## 2.5 FID Slots

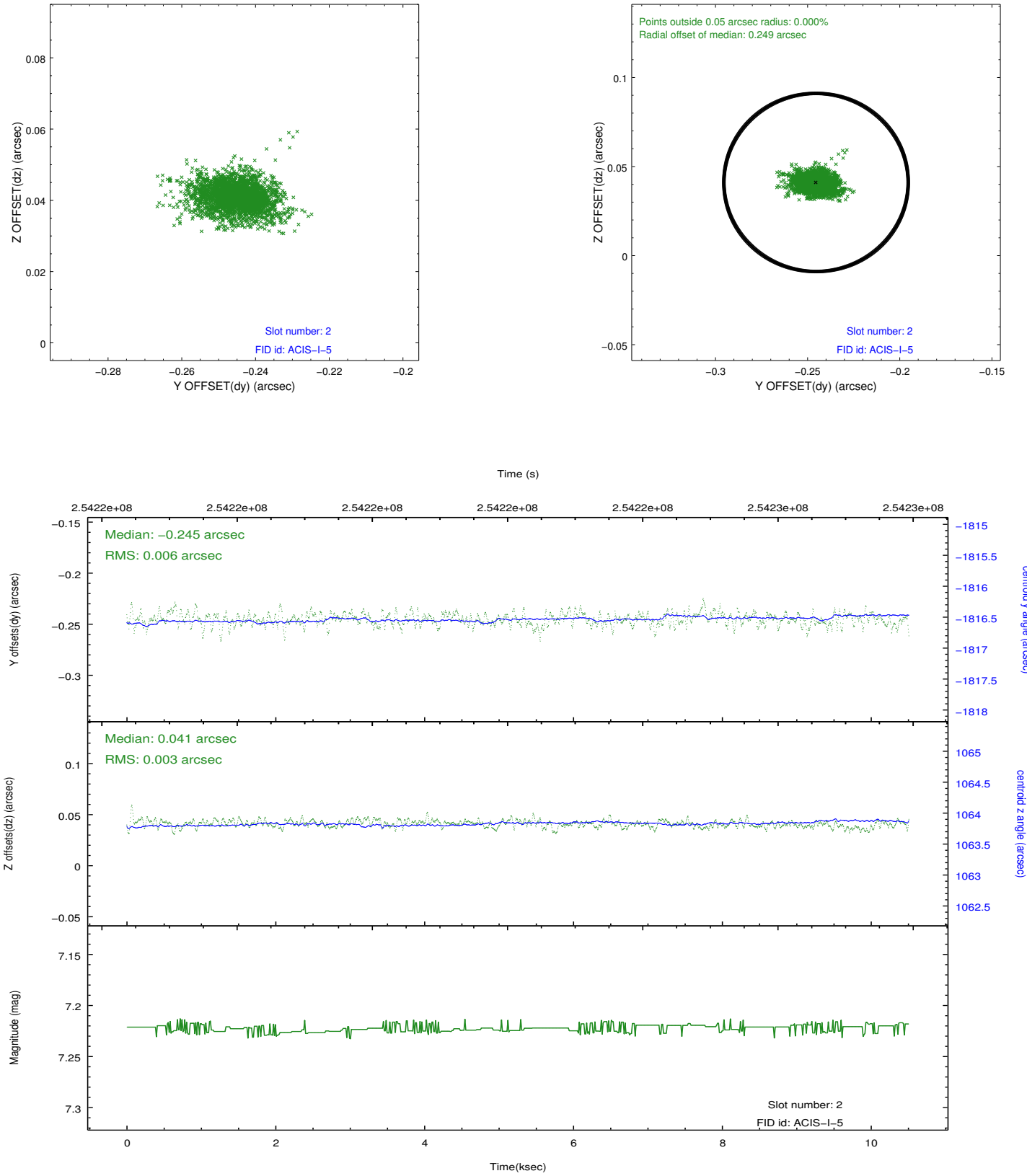
### 2.5.1 Slot 0



## 2.5.2 Slot 1



### 2.5.3 Slot 2



## A Summary

### A.1 Status

V&V Scientist	Jen Lauer
V&V Date (YYYY-MM-DD)	2012.03.26
V&V Edition	1
V&V Disposition and Status	OK
V&V Charge Time	9.95839996

### A.2 Comments