

# V&V Reference Report

## L2 ASCDS Version : 7.6.11.2

Observation 62896 - L2 Version 2  
Chandra X-Ray Center

L2 Processing Date : Nov 2 2007

## Contents

<b>1</b>	<b>Front</b>	<b>2</b>
<b>2</b>	<b>OBI</b>	<b>3</b>
2.1	OBI . . . . .	3
2.1.1	Images . . . . .	3
2.1.2	Bias . . . . .	3
2.1.3	Parameters . . . . .	4
2.1.4	Events . . . . .	4
2.2	Compared Parameters . . . . .	5
2.3	Star Slots . . . . .	6
2.4	FID Slots . . . . .	6
<b>A</b>	<b>Summary</b>	<b>7</b>
A.1	Status . . . . .	7
A.2	Comments . . . . .	7

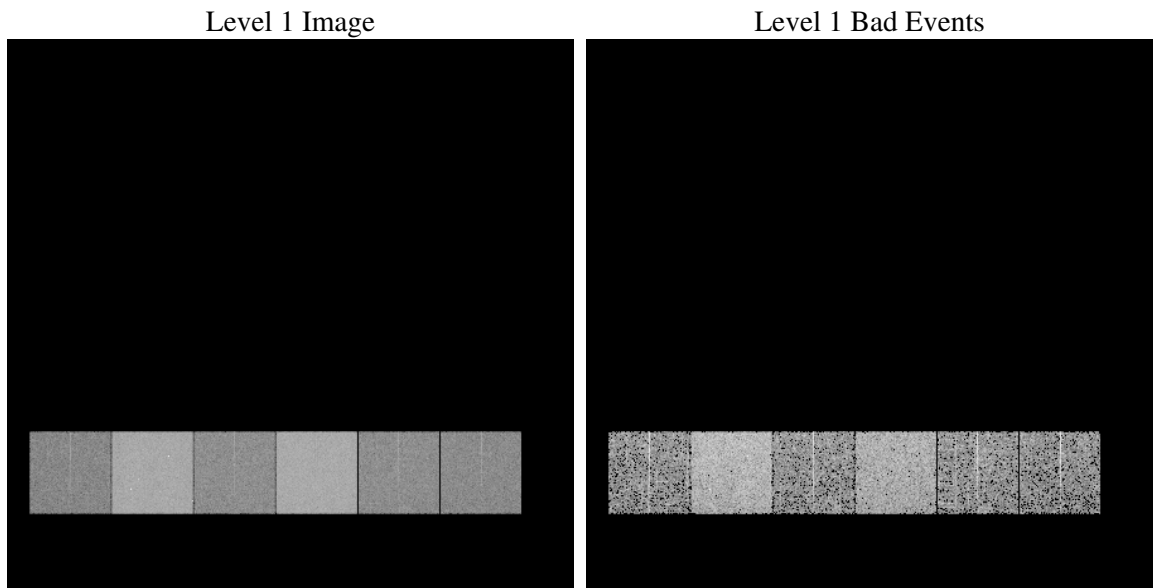
# 1 Front

seq_num	&#160
obs_id	62896
title	ACIS-456789 diagnostics; interrupted by Feb2000 safemode
observer	CHANDRA engineering request/realtime commanding
object	&#160
dtcycle	0
cycle	P
ra_targ	0.0
dec_targ	0.0
ra_nom	105.66756166492
dec_nom	-25.703723291461
roll_nom	306.06945582433
revision	2
ontime	1742.7559094429
livetime	1720.6880847559
ontime4	697.46502706409
ontime5	1862.7138343453
ontime6	809.42316772044
ontime7	1742.7559094429
ontime8	790.05900777876
ontime9	763.92543798685
l2events	563110

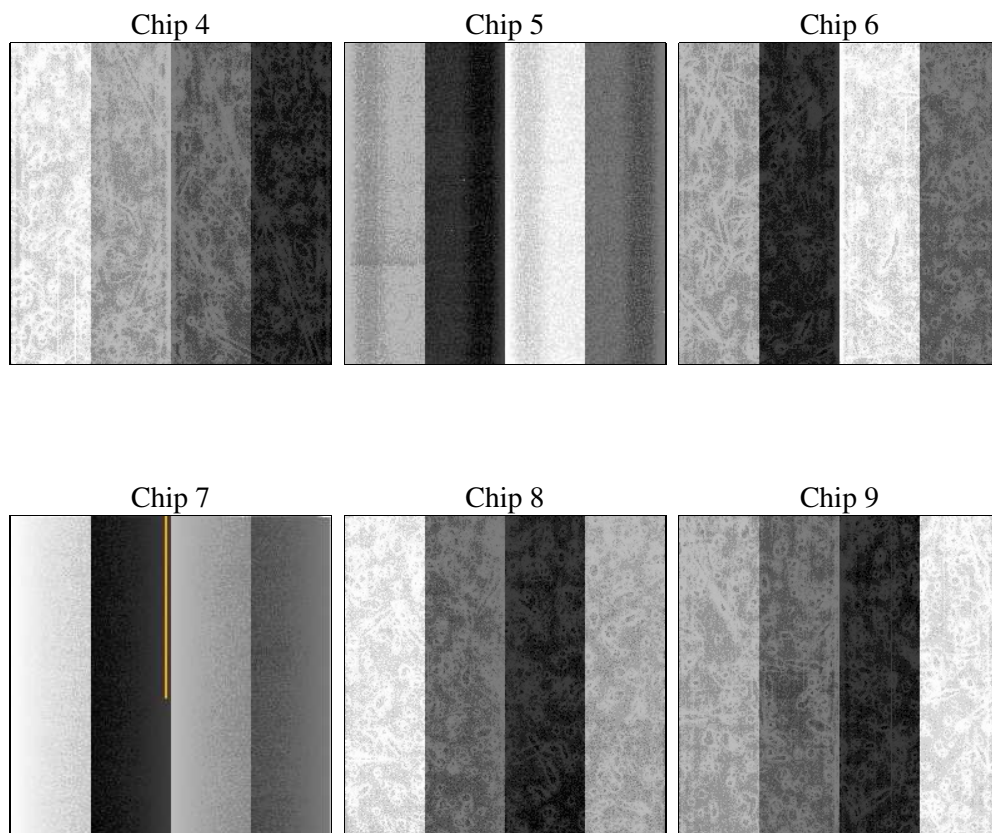
## 2 OBI

### 2.1 OBI

#### 2.1.1 Images



#### 2.1.2 Bias



### 2.1.3 Parameters

obi_num	0
ascdsver	7.6.11.2
caldbver	3.4.1
date	2007-11-02T12:57:06
revision	2

sched_exp_time	0.0
ontime	1742.7559094429
ontime4	697.46502706409
ontime5	1862.7138343453
ontime6	809.42316772044
ontime7	1742.7559094429
ontime8	790.05900777876
ontime9	763.92543798685
llevents	683581

### 2.1.4 Events

	ccd 4	ccd 5	ccd 6	ccd 7	ccd 8	ccd 9
level 1 events	72568	176020	87576	181652	86247	79518
rejected events	12375	26104	12618	21204	13085	11413
rejected %	17%	14%	14%	11%	15%	14%

	ccd 4	ccd 5	ccd 6	ccd 7	ccd 8	ccd 9
grade 0 events	36407	41635	43231	43946	42545	39191
	50%	23%	49%	24%	49%	49%
grade 1 events	216	164	242	110	235	246
	0%	0%	0%	0%	0%	0%
grade 2 events	11245	54735	13916	38202	13680	12537
	15%	31%	15%	21%	15%	15%
grade 3 events	4080	11084	5043	17599	4891	4434
	5%	6%	5%	9%	5%	5%
grade 4 events	3814	11040	4860	17648	4801	4559
	5%	6%	5%	9%	5%	5%
grade 5 events	567	3376	631	2465	721	664
	0%	1%	0%	1%	0%	0%
grade 6 events	8505	41401	12353	53742	11435	10873
	11%	23%	14%	29%	13%	13%
grade 7 events	7734	12585	7300	7940	7939	7014
	10%	7%	8%	4%	9%	8%

## 2.2 Compared Parameters

Parameter	Planned	Actual	Parameter	Planned	Actual
Instrument	ACIS	ACIS	Obspar format version number	6	6
Detector	ACIS-456789	ACIS-456789	Obspar file type	PREDICTED	ACTUAL
Grating	NONE	NONE	Obspar update status	NONE	UPDATED
Data mode	FAINT	FAINT	On-chip summing requested	N	N
Observation mode	SECONDARY	SECONDARY	Subarray requested	NONE	NONE
Pointing RA	0	105.6675616649189	Alternating exposures requested	N	N
Pointing Dec	0	-25.7037232914611	Primary exposure time	0.000000	3.2
Pointing Roll	0.0	306.069455824327			
SIM focus pos (mm)	-0.684267	-0.6828225247311905			
SIM defocus (mm)	0	0.8505141146731063			
SIM translation stage pos (mm)	-190.132523	250.466033080201			
SIM translation stage offset (mm)	0	-0.01005468664627074			
Observation start time	67156875.977	67156875.20892499			
Observation start date	2000-02-17T06:41:16	2000-02-17T06:41:15			
Observation end time	67162214.79700001	67162216.07819			
Observation end date	2000-02-17T08:10:15	2000-02-17T08:10:16			
Read mode	TIMED	TIMED			

## **2.3 Star Slots**

## **2.4 FID Slots**

# A Summary

## A.1 Status

V&V Scientist	Jen Lauer
V&V Date (YYYY-MM-DD)	2007.11.13
V&V Edition	1
V&V Disposition and Status	OK
V&V Charge Time	1.7427559

## A.2 Comments

The charge time is based on CCD\_ID=7. All six chips have dropped frames

due to telemetry saturation because of high radiation, and their effective exposures range from 0.7 - 1.8 ksec.

Chandra went into safe mode at 2007:048:08:08:53.4, prior to an ACA CAL dark current calibration.