

V&V Reference Report

L2 ASCDS Version : 7.6.7.1

Observation 62836 - L2 Version 001
Chandra X-Ray Center

L2 Processing Date : Apr 13 2006

Contents

1	Front	2
2	OBI	3
2.1	OBI	3
2.1.1	Images	3
2.1.2	Bias	3
2.1.3	Parameters	4
2.1.4	Events	4
2.2	Compared Parameters	5
2.3	Aspect	6
2.4	Star Slots	8
2.5	FID Slots	8
A	Summary	9
A.1	Status	9
A.2	Comments	9

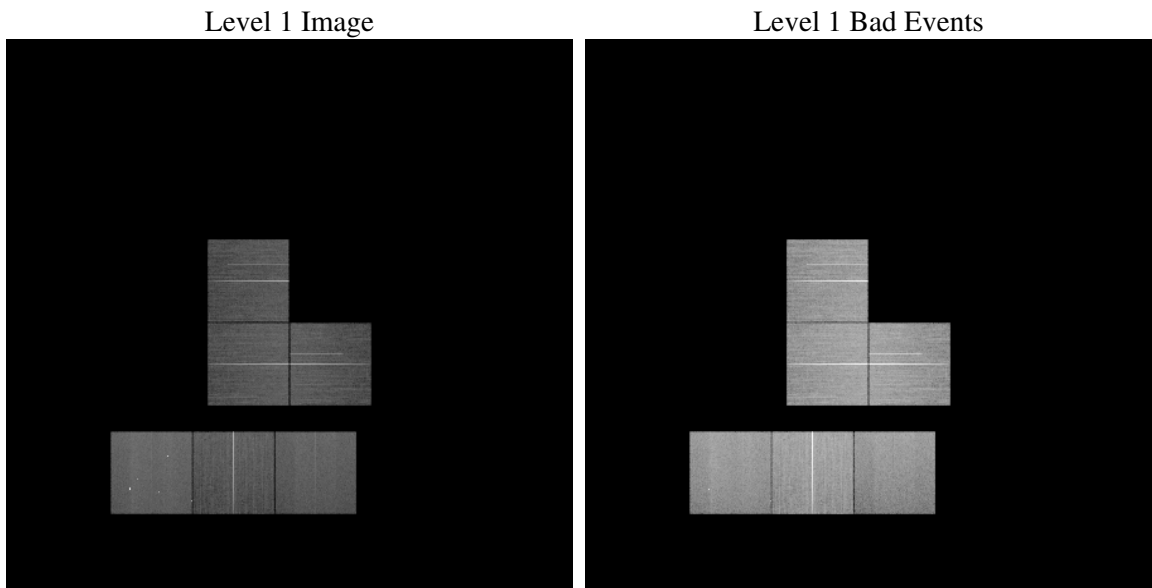
1 Front

seq_num	
obs_id	62836
title	ACIS-023567 diagnostics
observer	CHANDRA engineering request/realtime commanding
object	
dtcycle	0
cycle	P
ra_targ	0.0
dec_targ	0.0
ra_nom	283.67917509017
dec_nom	-37.696404784918
roll_nom	266.72891825926
revision	2
ontime	47219.199824095
livetime	46621.281883933
ontime0	47212.717923403
ontime2	47212.717873573
ontime3	47206.236092508
ontime5	47219.199824095
ontime6	47212.717943341
ontime7	47219.199824095
l2events	410763

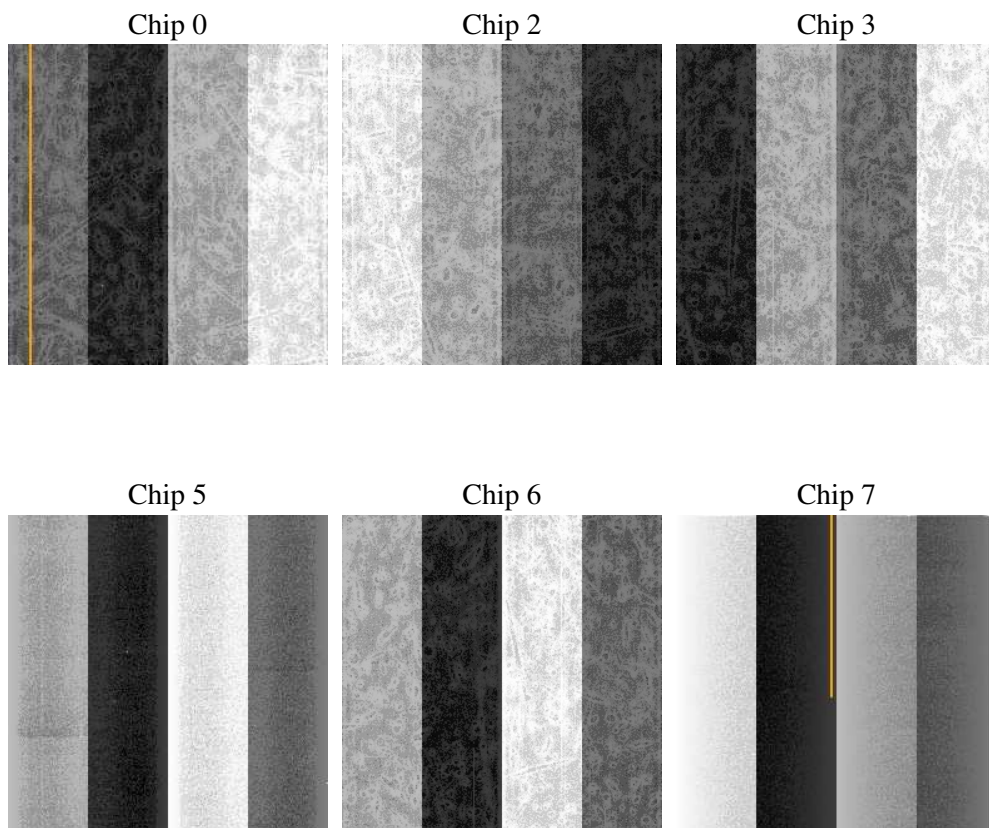
2 OBI

2.1 OBI

2.1.1 Images



2.1.2 Bias



2.1.3 Parameters

obi_num	0
ascdsver	7.6.7.1
caldbver	3.2.1
date	2006-04-13T20:31:36
revision	2

sched_exp_time	0.0
ontime	47221.3705571
ontime0	47214.888656408
ontime2	47214.888606578
ontime3	47208.406825513
ontime5	47221.3705571
ontime6	47214.888676345
ontime7	47221.3705571
l1events	1973787

2.1.4 Events

	ccd 0	ccd 2	ccd 3	ccd 5	ccd 6	ccd 7
level 1 events	288226	320316	303927	412548	315893	332877
rejected events	259422	292719	277245	213427	285610	194255
rejected %	90%	91%	91%	51%	90%	58%

	ccd 0	ccd 2	ccd 3	ccd 5	ccd 6	ccd 7
grade 0 events	9137	9036	8583	13269	9540	7403
	3%	2%	2%	3%	3%	2%
grade 1 events	146	147	155	670	127	197
	0%	0%	0%	0%	0%	0%
grade 2 events	7016	6720	5921	64724	6877	33819
	2%	2%	1%	15%	2%	10%
grade 3 events	3552	3280	3342	4930	3567	7921
	1%	1%	1%	1%	1%	2%
grade 4 events	3176	3179	3300	4623	3349	7888
	1%	0%	1%	1%	1%	2%
grade 5 events	10775	9978	11875	21795	12550	25802
	3%	3%	3%	5%	3%	7%
grade 6 events	5923	5382	5536	111575	6950	81591
	2%	1%	1%	27%	2%	24%
grade 7 events	248501	282594	265215	190962	272933	168256
	86%	88%	87%	46%	86%	50%

2.2 Compared Parameters

Parameter	Planned	Actual	Parameter	Planned	Actual
Instrument	ACIS	ACIS	Obspar format version number	6	6
Detector	ACIS-023567	ACIS-023567	Obspar file type	PREDICTED	ACTUAL
Grating	NONE	NONE	Obspar update status	NONE	UPDATED
Data mode	VFAINT	VFAINT	On-chip summing requested	N	N
Observation mode	SECONDARY	SECONDARY	Subarray requested	NONE	NONE
Pointing RA	0	283.6791750901681	Alternating exposures requested	N	N
Pointing Dec	0	-37.69640478491802	Primary exposure time	3.2	3.2
Pointing Roll	0.0	266.7289182592605			
SIM focus pos (mm)	-0.684267	-1.038866356238299			
SIM defocus (mm)	0	0.001426264420575141			
SIM translation stage pos (mm)	-190.132523	51.9960404362608			
SIM translation stage offset (mm)	0	74.98944845534076			
Observation start time	215959145.863803	215959144.83878			
Observation start date	2004-11-04T12:39:06	2004-11-04T12:39:04			
Observation end time	216008151.116004	216008150.09098			
Observation end date	2004-11-05T02:15:51	2004-11-05T02:15:50			
Read mode	TIMED	TIMED			

2.3 Aspect

2.4 Star Slots

2.5 FID Slots

A Summary

A.1 Status

V&V Scientist	Jen Lauer
V&V Date (YYYY-MM-DD)	2006.04.14
V&V Edition	1
V&V Disposition and Status	OK
V&V Charge Time	47.2191998

A.2 Comments