

V&V Reference Report

L2 ASCDS Version : 8.4.5

Observation 626 - L2 Version 5
Chandra X-Ray Center

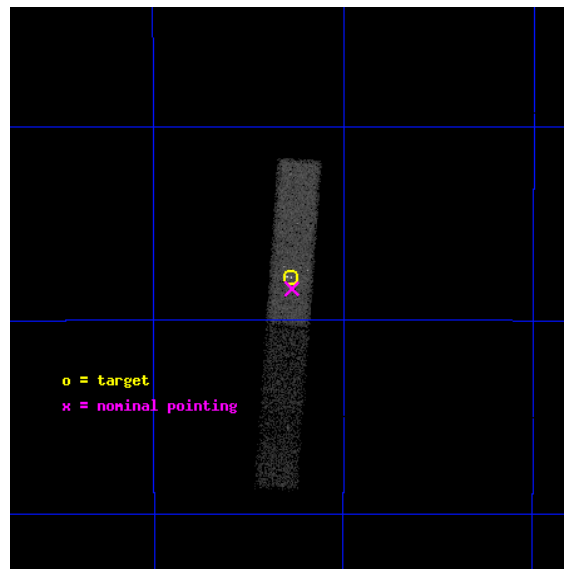
L2 Processing Date : Aug 28 2012

Contents

1	Front	2
2	OBI	3
2.1	OBI	3
2.1.1	Images	3
2.1.2	Bias	3
2.1.3	Parameters	4
2.1.4	Events	4
2.2	Compared Parameters	5
2.3	Aspect	6
2.4	Star Slots	9
2.4.1	Slot 3	9
2.4.2	Slot 4	10
2.4.3	Slot 5	11
2.4.4	Slot 6	12
2.4.5	Slot 7	13
2.5	FID Slots	14
2.5.1	Slot 0	14
2.5.2	Slot 1	15
2.5.3	Slot 2	16
A	Summary	17
A.1	Status	17
A.2	Comments	17

1 Front

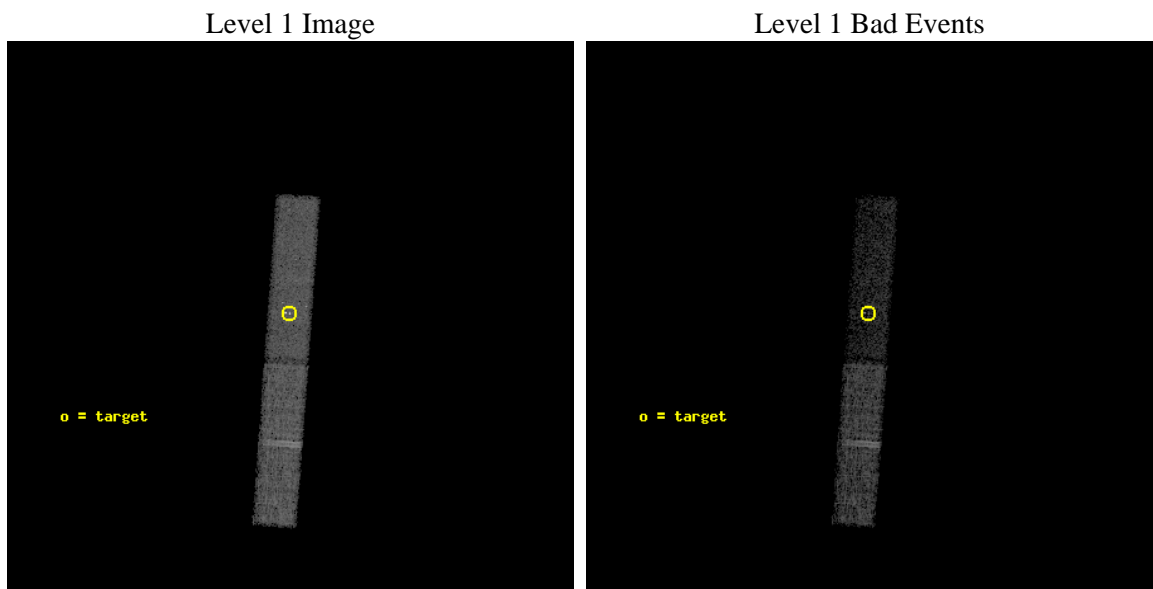
seq_num	200051	Sequence number
obs_id	626	Observation id
title	A COMPREHENSIVE INVESTIGATION OF X-RAY EMISSION FROM INTERMEDIATE MASS STARS	Proposal title
observer	Dr. Jeffrey Linsky	Principal investigator
object	HD 113703	Source name
dtcycle	0	
cycle	P	events from which exps? Prim/Second/Both
ra_targ	196.569583	Observer's specified target RA [deg]
dec_targ	-48.463278	Observer's specified target Dec [deg]
ra_nom	196.56792123672	Nominal RA [deg]
dec_nom	-48.47315898218	Nominal Dec [deg]
roll_nom	274.18165301509	Nominal Roll [deg]
revision	5	Processing version of data
ontime	12739.50008437	Sum of GTIs [s]
livetime	12183.913623155	Livetime [s]
ontime6	12739.50008437	Sum of GTIs [s]
ontime7	12739.50008437	Sum of GTIs [s]
l2events	26750	Number of level 2 events



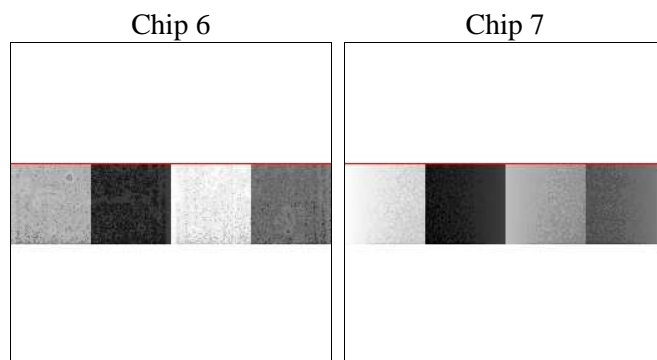
2 OBI

2.1 OBI

2.1.1 Images



2.1.2 Bias



2.1.3 Parameters

obi_num	1	Obi number	sched_exp_time	12500.000000	[s] Scheduled observation exposure time
ascdsver	8.4.5	Processing system revision	ontime	12739.50008437	Sum of GTIs [s]
caldsver	4.5.1.1	 	ontime6	12739.50008437	Sum of GTIs [s]
date	2012-08-28T22:43:44	Date and time of file creation	ontime7	12739.50008437	Sum of GTIs [s]
revision	5	Processing version of data	l1events	76094	Number of level 1 events

2.1.4 Events

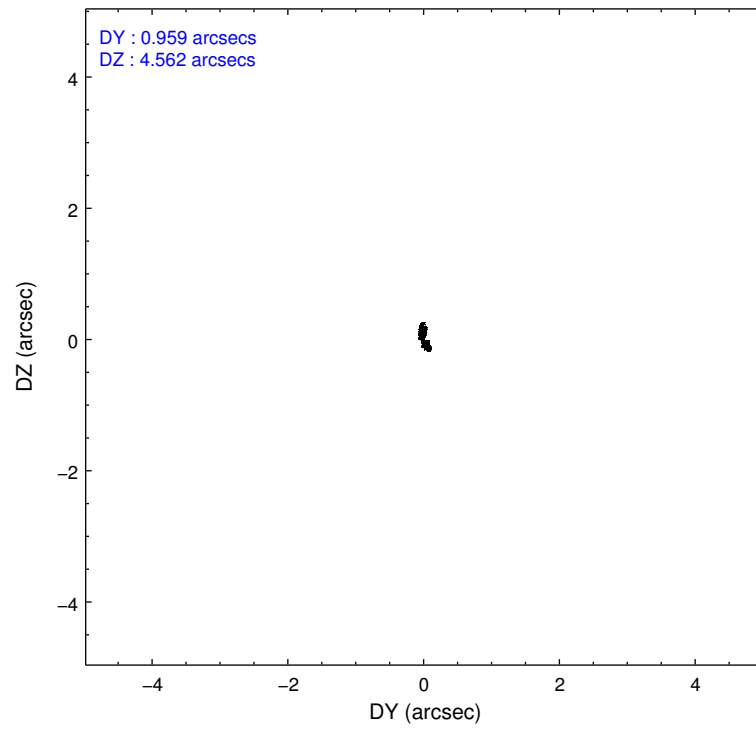
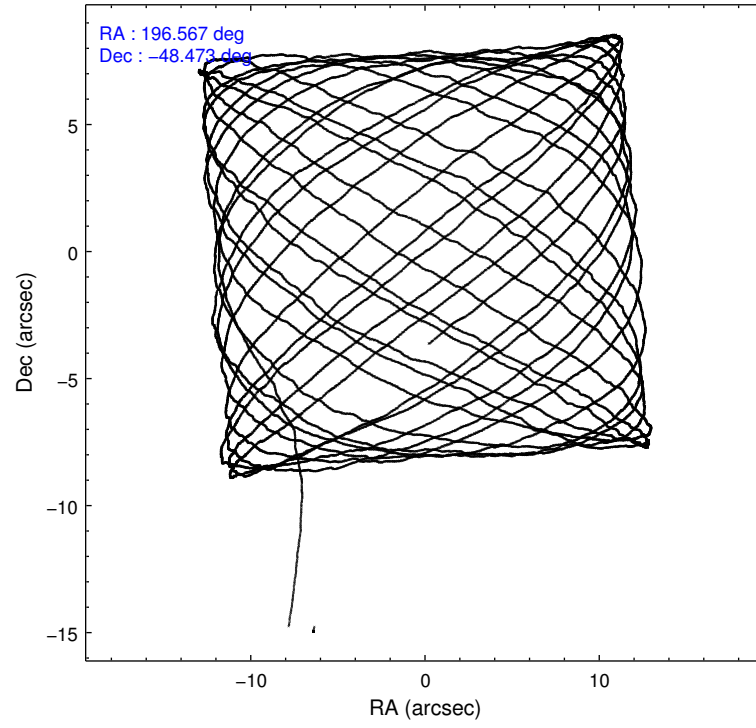
	ccd 6	ccd 7
level 1 events	37691	38403
rejected events	32935	14929
rejected %	87%	38%

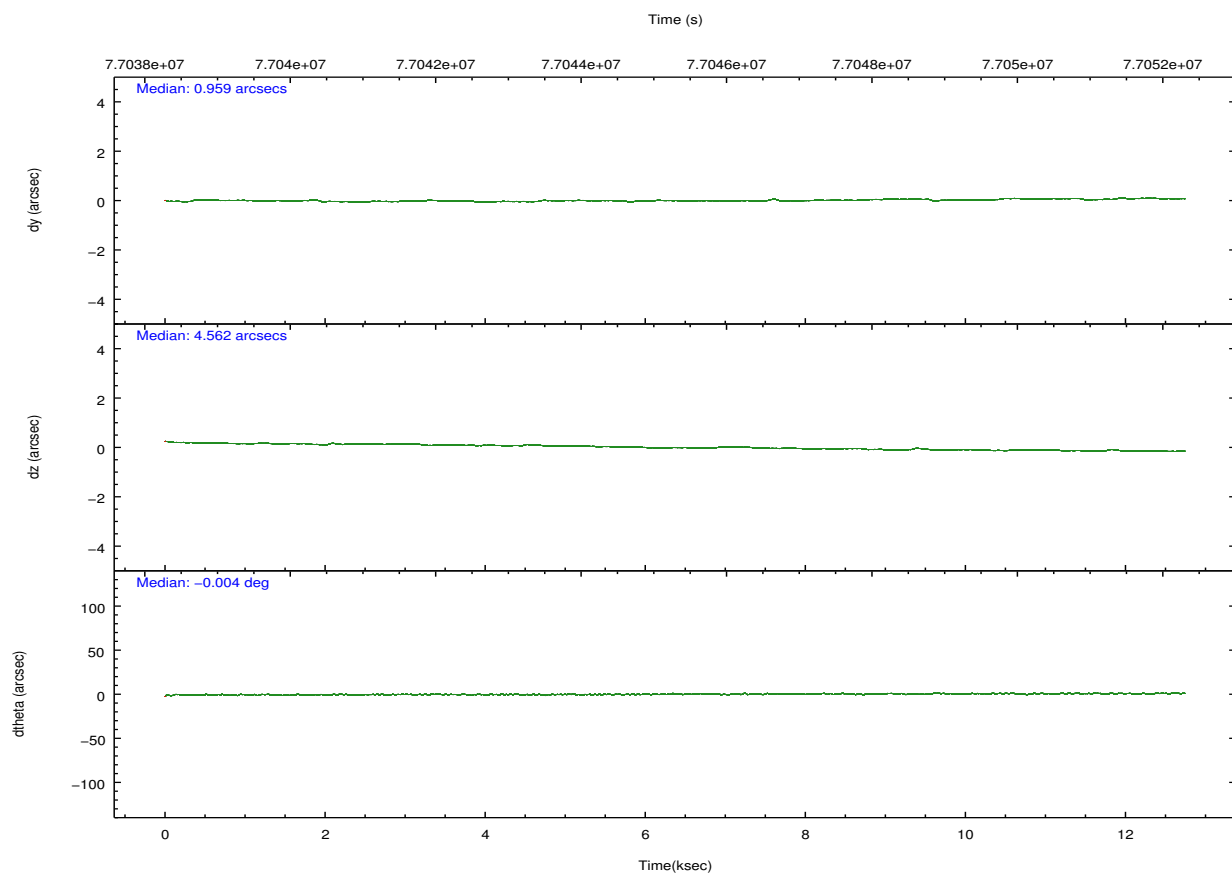
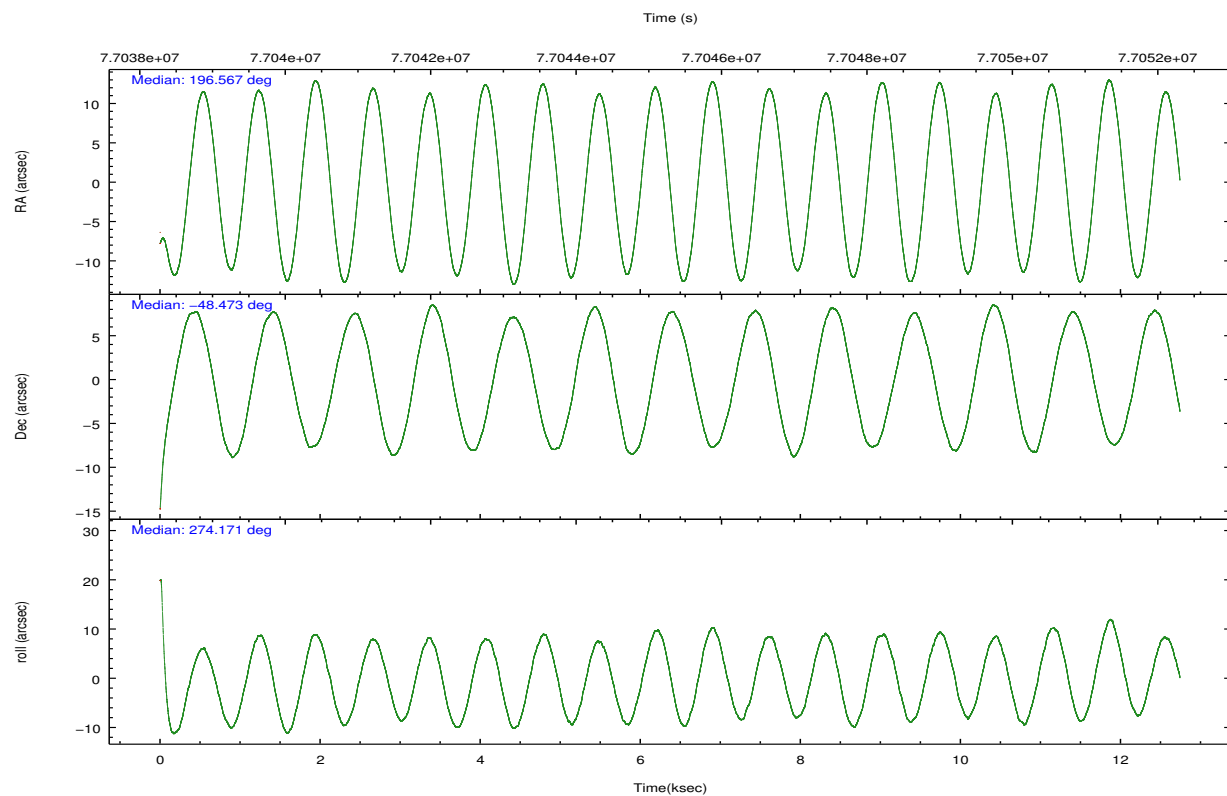
	ccd 6	ccd 7
grade 0 events	2284	4261
	6%	11%
grade 1 events	11	69
	0%	0%
grade 2 events	764	5364
	2%	13%
grade 3 events	614	2568
	1%	6%
grade 4 events	590	2430
	1%	6%
grade 5 events	724	2565
	1%	6%
grade 6 events	656	9647
	1%	25%
grade 7 events	32048	11499
	85%	29%

2.2 Compared Parameters

Parameter	Planned	Actual	Parameter	Planned	Actual
Instrument	ACIS	ACIS	Obspar format version number	7	7
Detector	ACIS-67	ACIS-67	Obspar file type	PREDICTED	ACTUAL
Grating	NONE	NONE	Obspar update status	NONE	UPDATED
Data mode	VFAINT	VFAINT	Number of optional ACIS chips dropped	0	0
Observation mode	POINTING	POINTING	On-chip summing requested	N	N
[deg] Pointing RA	196.544555	196.5679212367209	Subarray requested	CUSTOM	1/4
[deg] Pointing Dec	-48.450577	-48.47315898217978	Subarray start row	383	383
[deg] Pointing Roll	274.007511	274.1816530150912	Subarray row count	256	256
[mm] SIM focus pos	-0.684267	-0.6828225247311905	Alternating exposures requested	N	N
[mm] SIM defocus	0	0.001444936568705701	[s] Primary exposure time	0.000000	0.9
[mm] SIM translation stage pos	-190.132523	-190.1400660498719			
[mm] SIM translation stage offset	0	0.00754346686406393			
[s] Observation start time (MET)	77039163.184000	77038181.07493401			
Observation start date	2000-06-10T15:44:59	2000-06-10T15:29:41			
[s] Observation end time (MET)	77051663.184000	77052082.12544601			
Observation end date	2000-06-10T19:13:19	2000-06-10T19:21:22			
Read mode	TIMED	TIMED			

2.3 Aspect



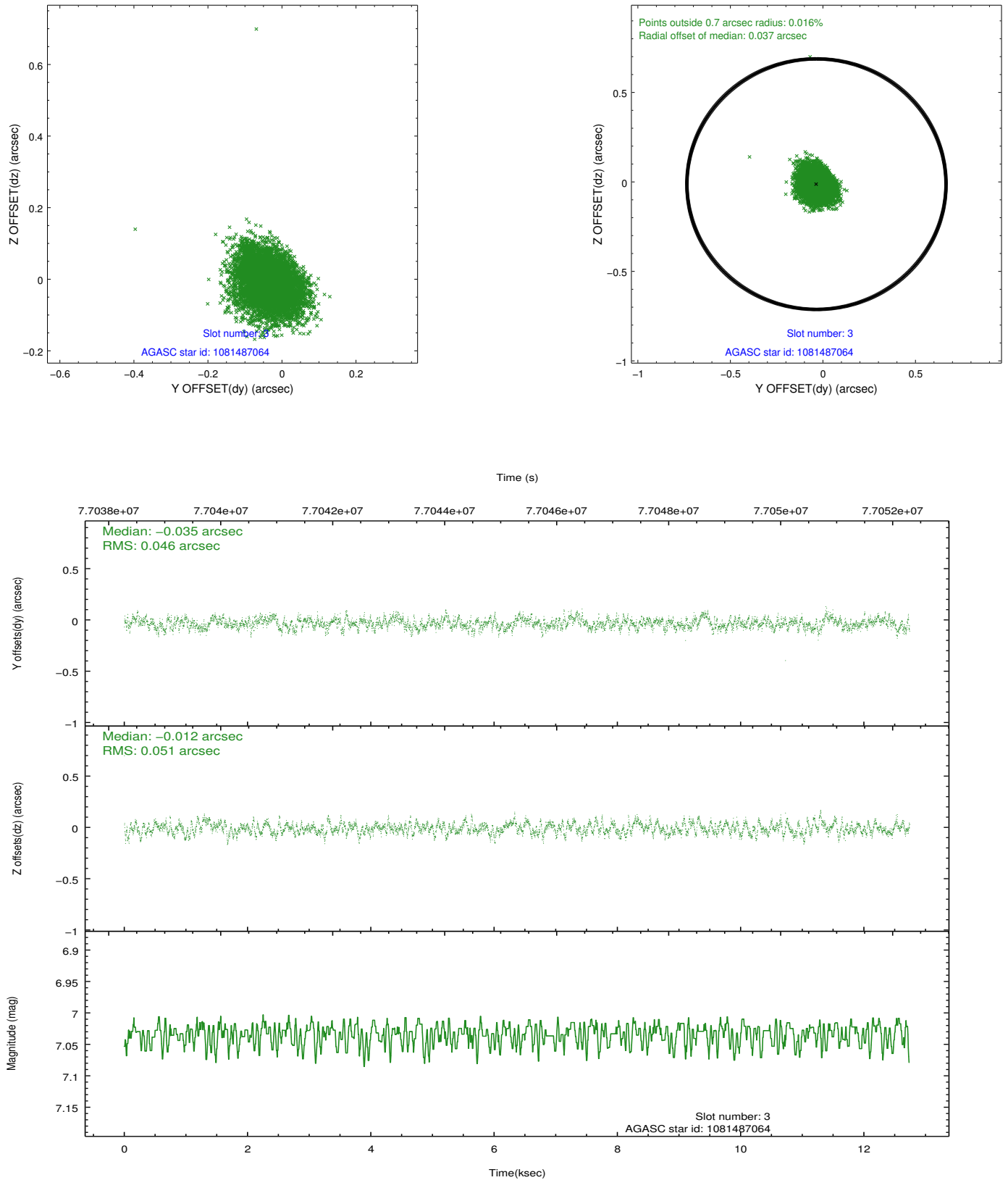


Slot Statistics

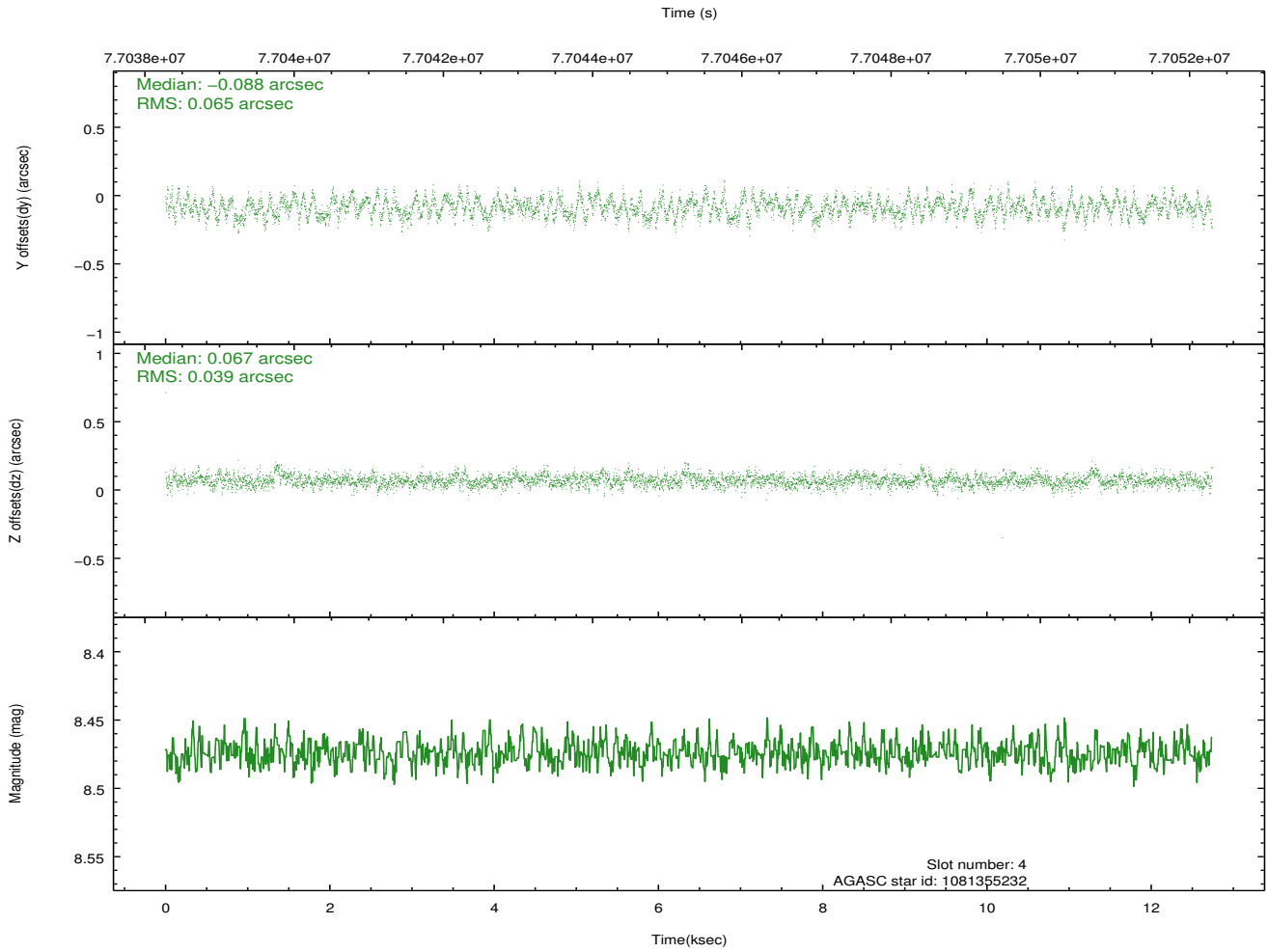
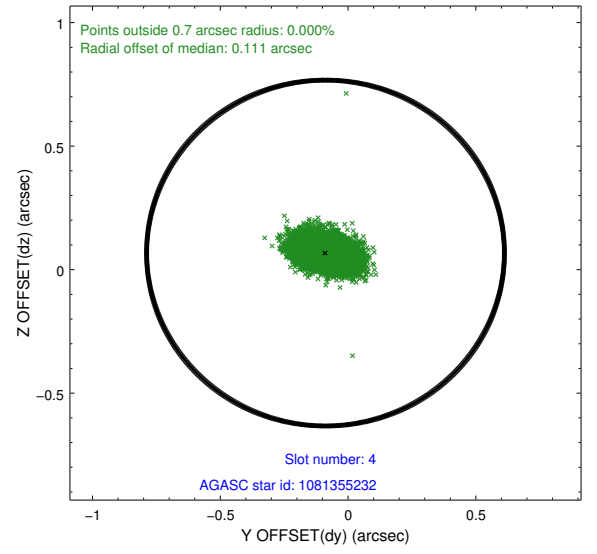
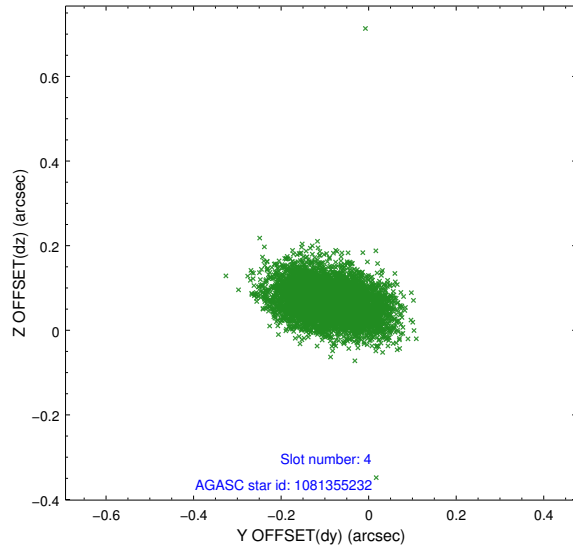
slot	status	id	mag	n_pts	med_dy	med_dz	dr1	dr2	ra	dec	mean_y	mean_z
0	FID	ACIS-S-2	7.11	3106	-0.026	-0.005	0.007	0.012	0.000000	0.000000	-753.59	-1725.67
1	FID	ACIS-S-4	7.21	3108	-0.002	0.014	0.005	0.010	0.000000	0.000000	2159.55	182.42
2	FID	ACIS-S-5	7.23	3108	-0.003	0.000	0.007	0.012	0.000000	0.000000	-1805.91	176.53
3	GUIDE	1081487064	7.03	6216	-0.035	-0.012	0.073	0.117	197.364851	-48.524652	412.93	1932.96
4	GUIDE	1081355232	8.47	6215	-0.088	0.067	0.079	0.132	196.854164	-48.050665	-1382.64	845.19
5	GUIDE	1081481096	9.31	6214	0.046	0.047	0.088	0.146	196.925933	-48.188810	-874.05	980.11
6	GUIDE	1081485688	9.46	6196	-0.026	0.046	0.084	0.140	197.012566	-48.481968	193.99	1107.44
7	GUIDE	1081880896	9.90	6209	0.098	-0.144	0.131	0.238	195.688077	-48.908068	1513.34	-2135.95

2.4 Star Slots

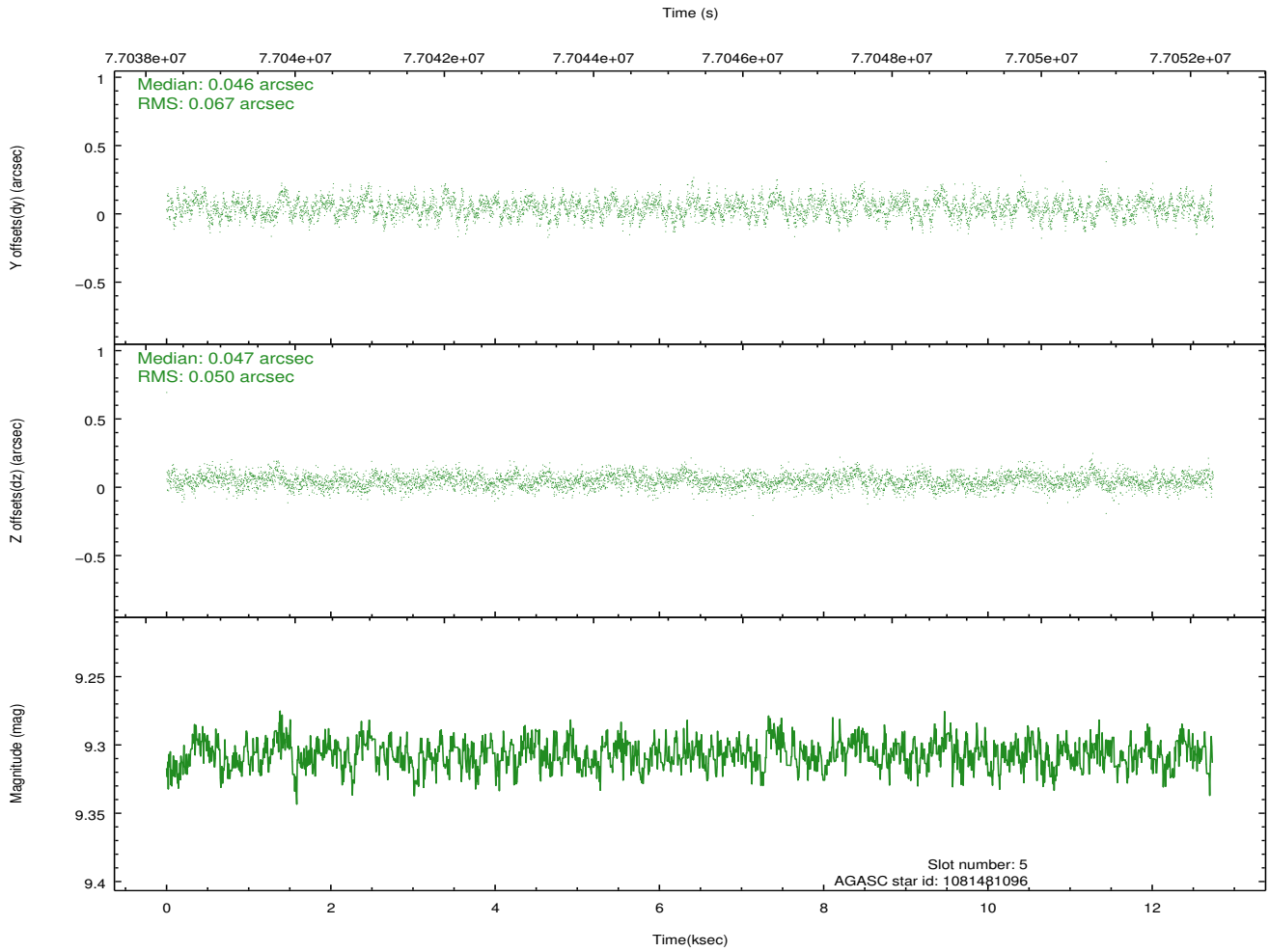
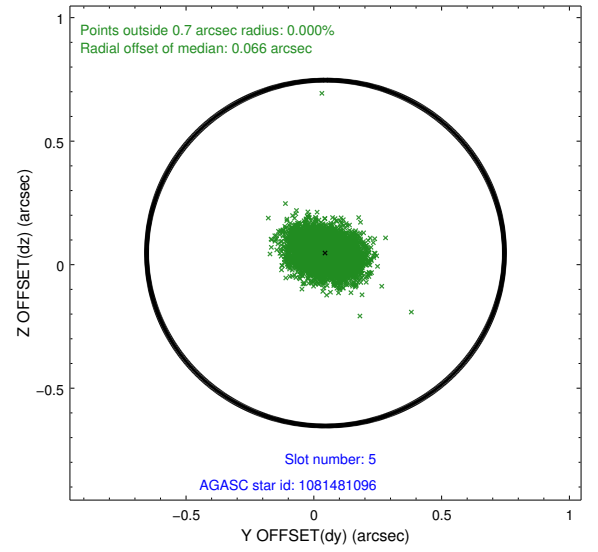
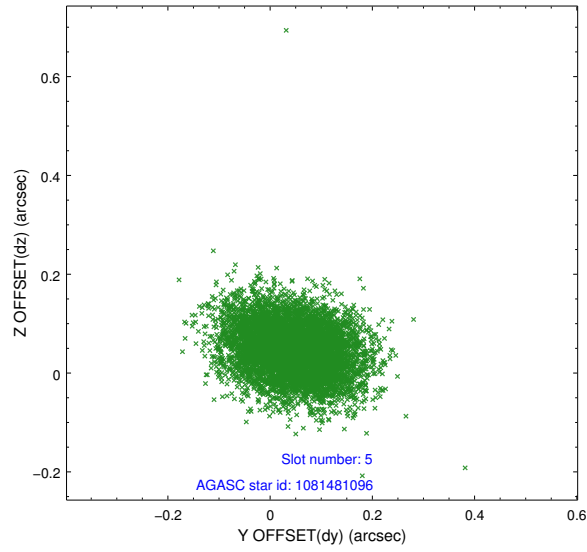
2.4.1 Slot 3



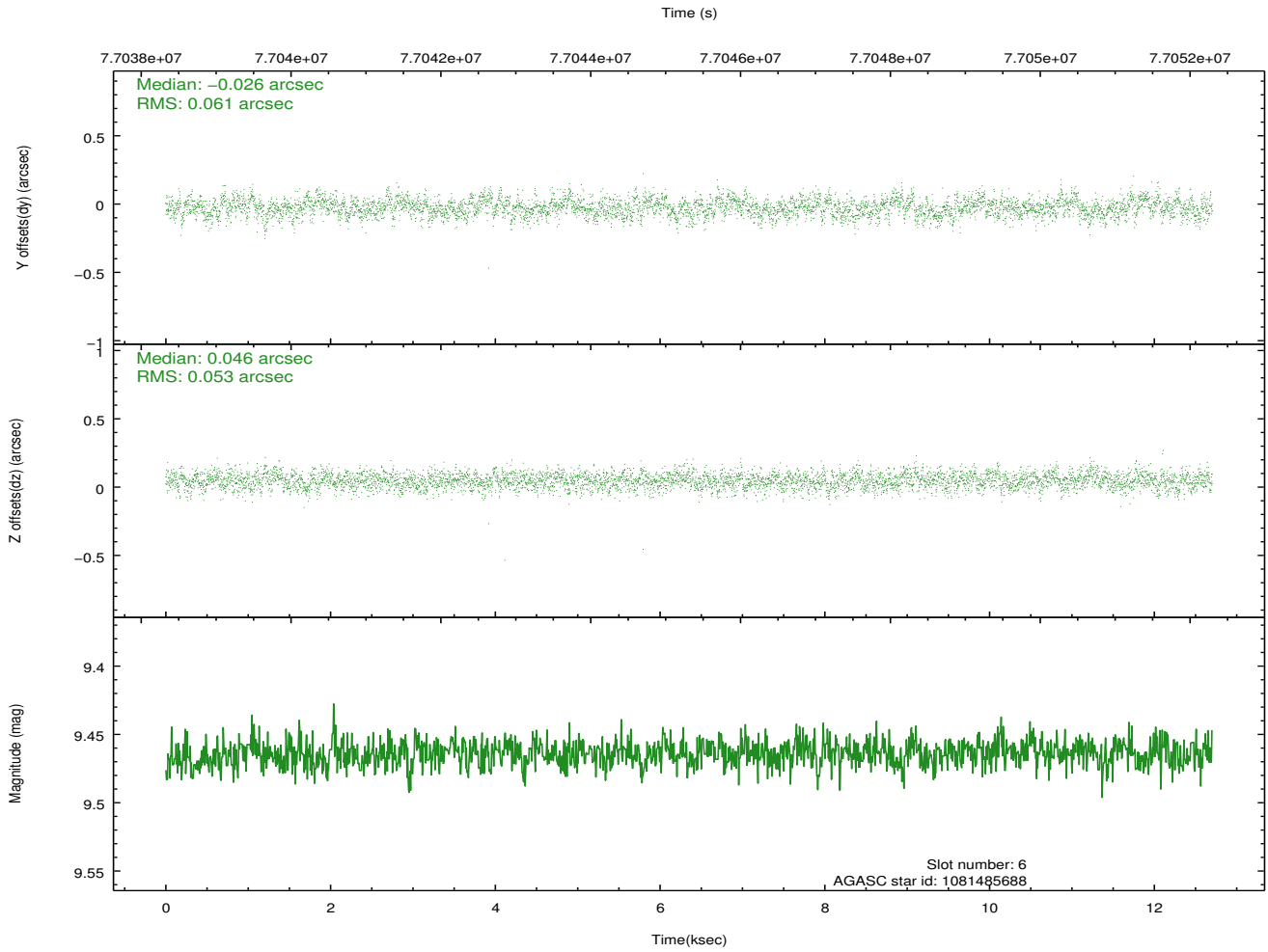
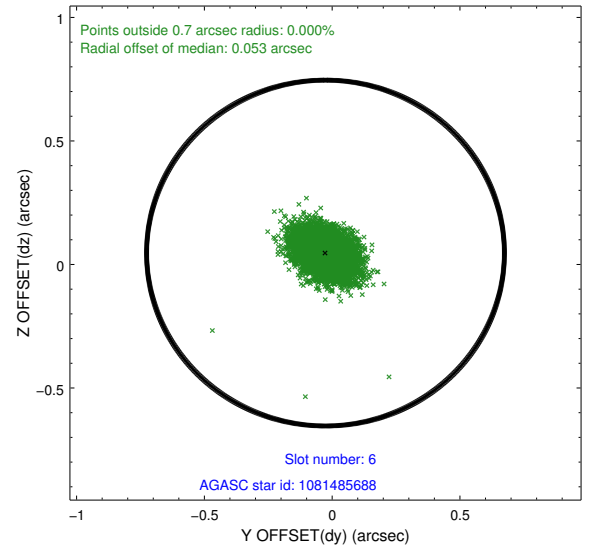
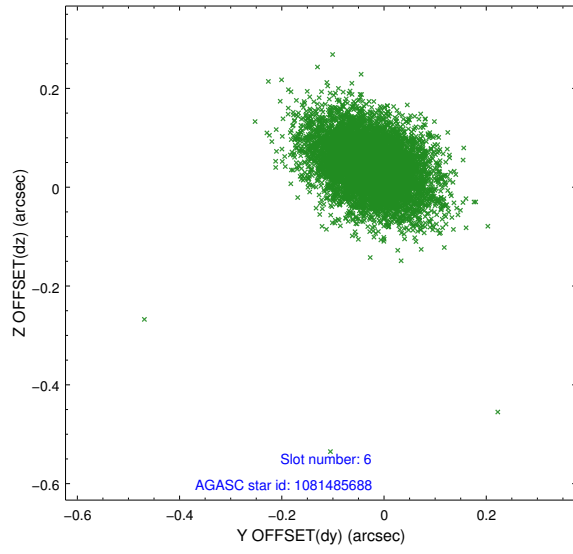
2.4.2 Slot 4



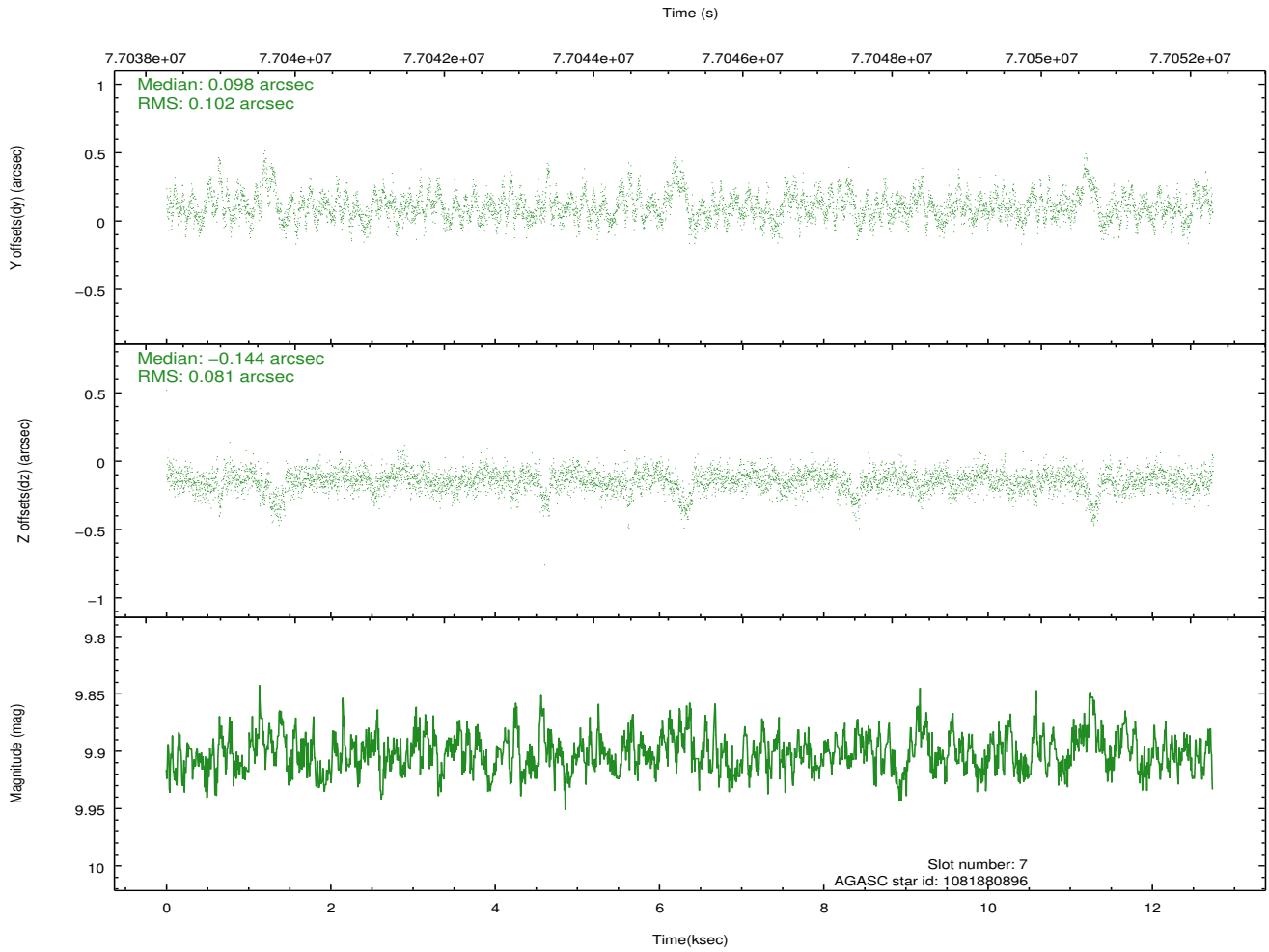
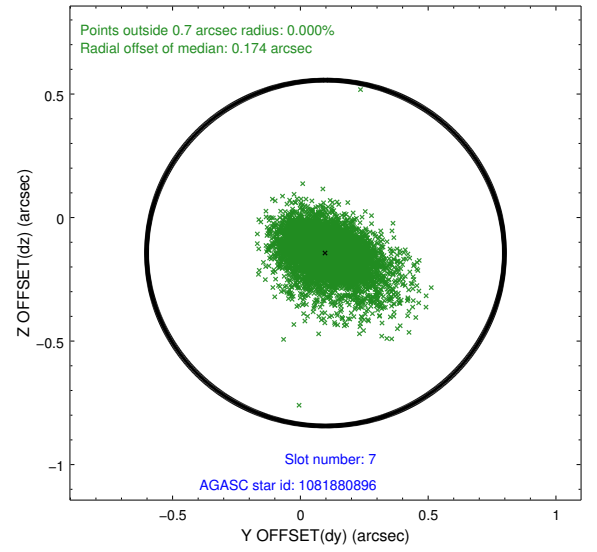
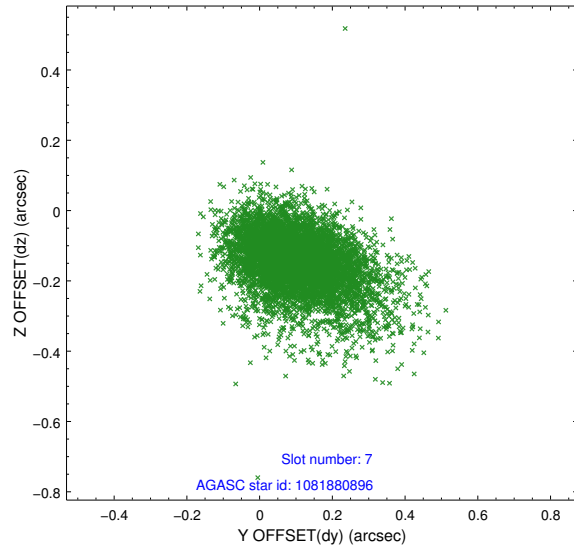
2.4.3 Slot 5



2.4.4 Slot 6

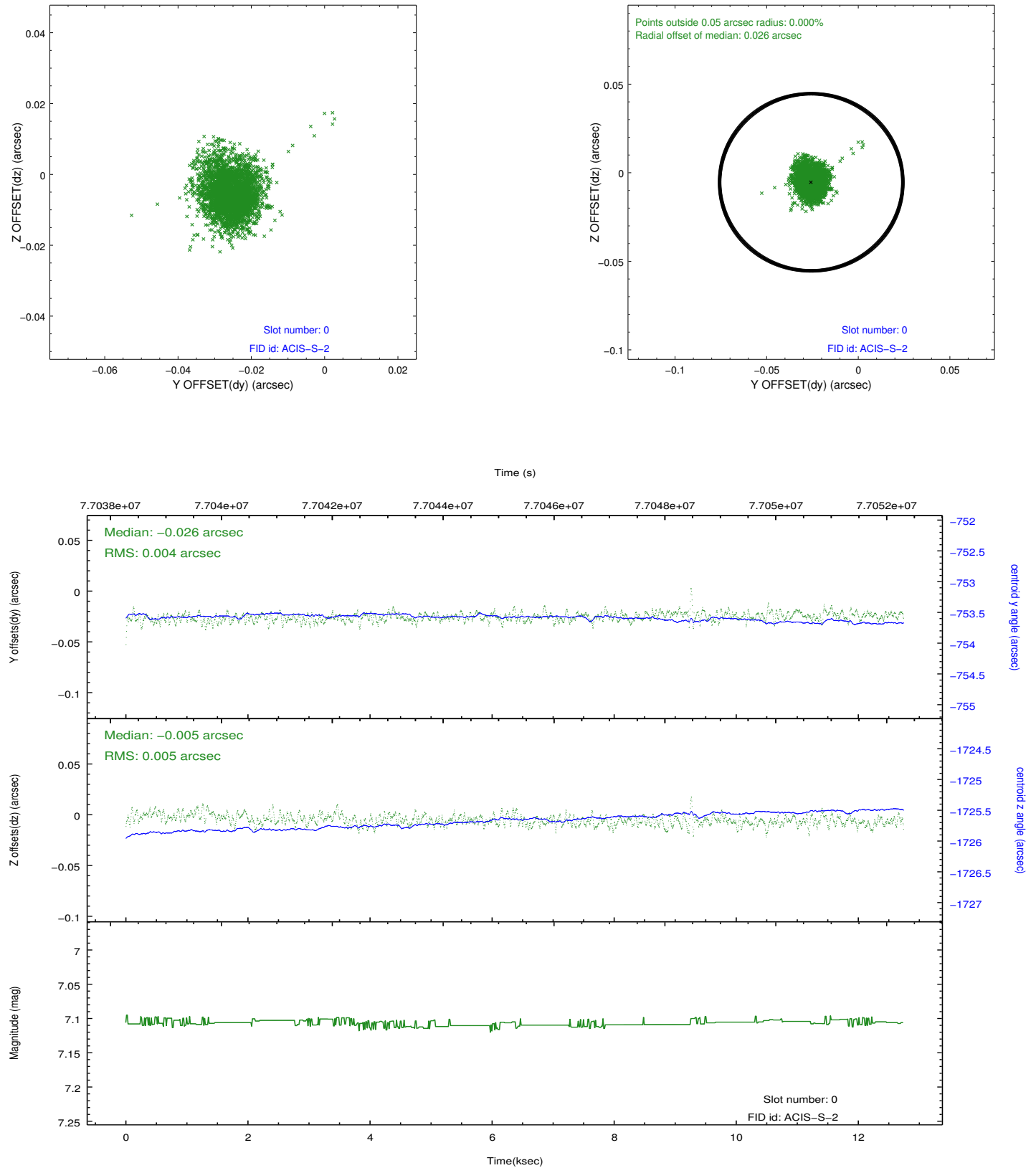


2.4.5 Slot 7

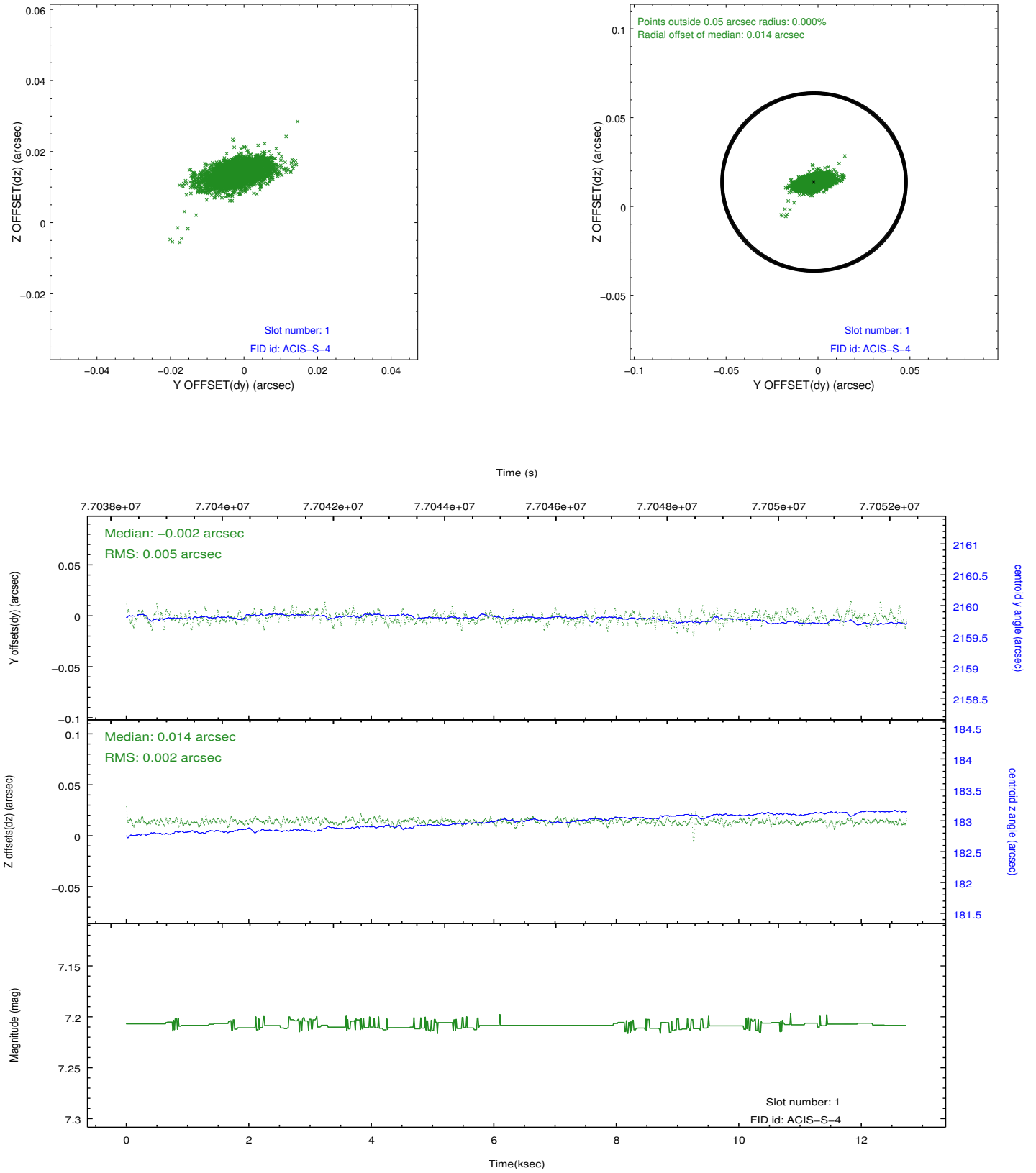


2.5 FID Slots

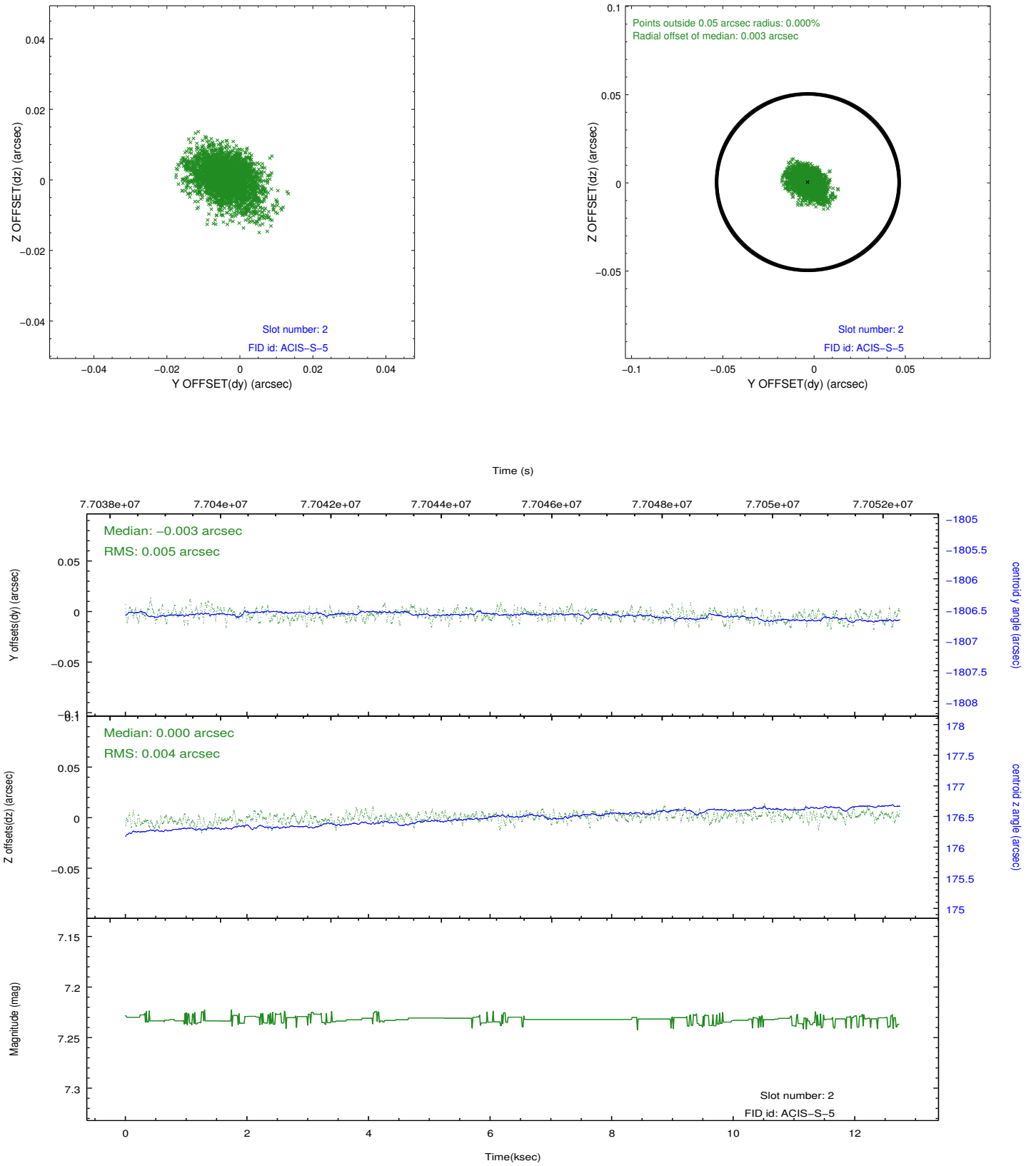
2.5.1 Slot 0



2.5.2 Slot 1



2.5.3 Slot 2



A Summary

A.1 Status

V&V Scientist	Jen Lauer
V&V Date (YYYY-MM-DD)	2012.08.31
V&V Edition	1
V&V Disposition and Status	OK
V&V Charge Time	12.702

A.2 Comments

Charge time for this ObsId remains at previous value of 12.702 ks although with the current processing the charge time would have been 12.74 ksec.