

V&V Reference Report

L2 ASCDS Version : 8.4.5

Observation 62176 - L2 Version 4
Chandra X-Ray Center

L2 Processing Date : Aug 22 2012

Contents

1	Front	2
2	OBI	3
2.1	OBI	3
2.1.1	Images	3
2.1.2	Bias	3
2.1.3	Parameters	4
2.1.4	Events	4
2.2	Compared Parameters	5
2.3	Star Slots	6
2.4	FID Slots	6
A	Summary	7
A.1	Status	7
A.2	Comments	7

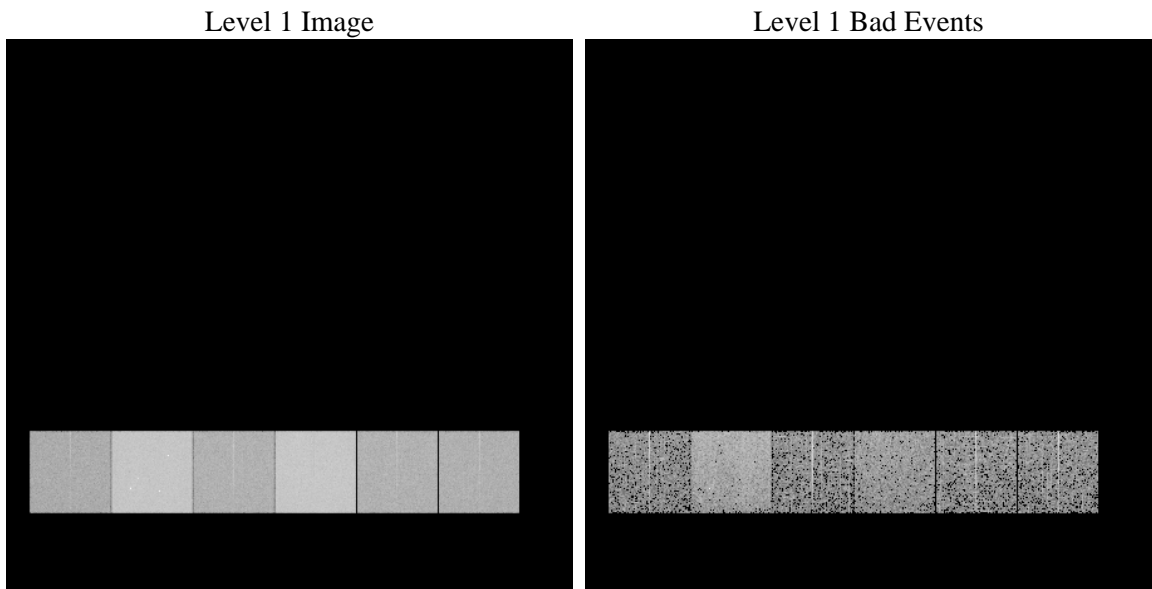
1 Front

seq_num	 	Sequence number
obs_id	62176	Observation id
title	ACIS-456789 diagnostics	Proposal title
observer	CHANDRA engineering request/realtime commanding	Principal investig
object	 	Source name
dtcycle	0	
cycle	P	events from which exps? Prim/Second/Both
ra_targ	0.0	Observer's specified target RA [deg]
dec_targ	0.0	Observer's specified target Dec [deg]
ra_nom	201.33319494335	Nominal RA [deg]
dec_nom	-38.384698730512	Nominal Dec [deg]
roll_nom	57.185930450138	Nominal Roll [deg]
revision	4	Processing version of data
ontime	2903.9527628347	Sum of GTIs [s]
livetime	2867.1811644013	Livetime [s]
ontime4	1150.5677959025	Sum of GTIs [s]
ontime5	3114.6273879483	Sum of GTIs [s]
ontime6	1302.8967360556	Sum of GTIs [s]
ontime7	2903.9527628347	Sum of GTIs [s]
ontime8	1315.8608062938	Sum of GTIs [s]
ontime9	1273.9392092898	Sum of GTIs [s]
l2events	931623	Number of level 2 events

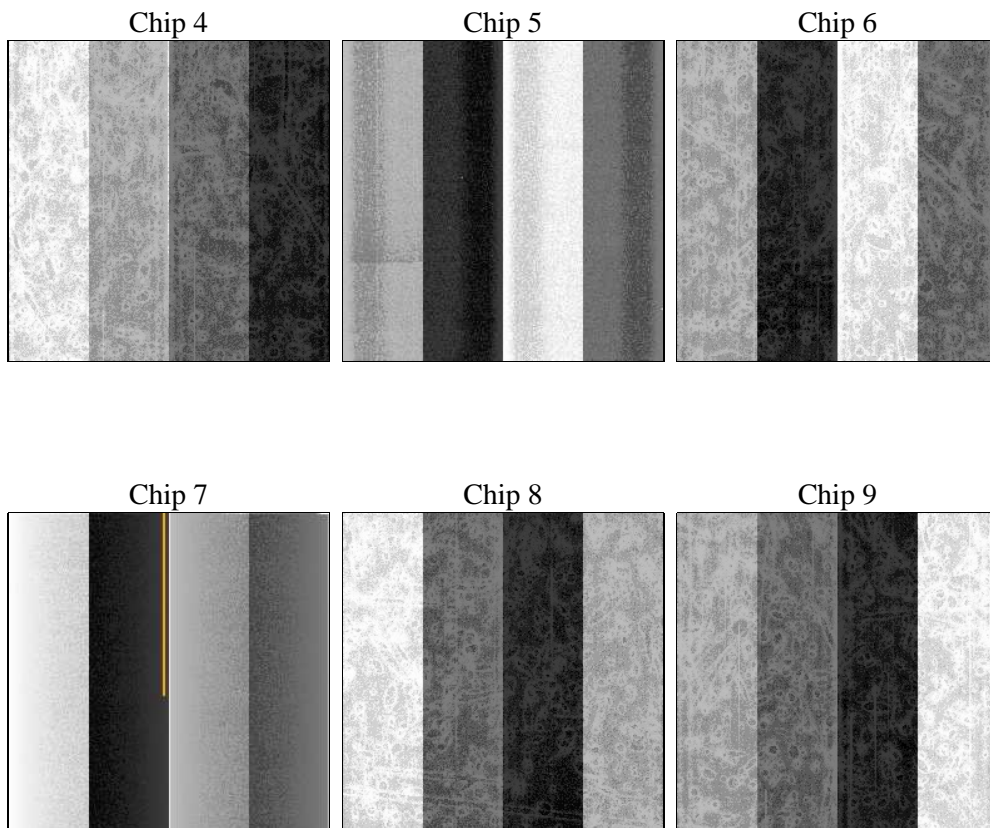
2 OBI

2.1 OBI

2.1.1 Images



2.1.2 Bias



2.1.3 Parameters

obi_num	1	Obi number	sched_exp_time	0.0	[s] Scheduled observation exposure time
ascdsver	8.4.5	Processing system revision	ontime	2903.9527628347	Sum of GTIs [s]
caldsver	4.5.1.1	 	ontime4	1150.5677959025	Sum of GTIs [s]
date	2012-08-22T14:32:46	Date and time of file creation	ontime5	3114.6273879483	Sum of GTIs [s]
revision	4	Processing version of data	ontime6	1302.8967360556	Sum of GTIs [s]
			ontime7	2903.9527628347	Sum of GTIs [s]
			ontime8	1315.8608062938	Sum of GTIs [s]
			ontime9	1273.9392092898	Sum of GTIs [s]
			l1events	1064033	Number of level 1 events

2.1.4 Events

	ccd 4	ccd 5	ccd 6	ccd 7	ccd 8	ccd 9		ccd 4	ccd 5	ccd 6	ccd 7	ccd 8	ccd 9
level 1 events	110873	273598	134167	283027	135657	126711	grade 0 events	56322	63284	66005	68536	67139	62466
rejected events	11938	25422	12700	16065	13611	12800		50%	23%	49%	24%	49%	49%
rejected %	10%	9%	9%	5%	10%	10%	grade 1 events	362	214	397	195	369	385
								0%	0%	0%	0%	0%	0%
							grade 2 events	17156	86725	21098	58941	21626	20222
								15%	31%	15%	20%	15%	15%
							grade 3 events	6055	16649	7536	27272	7716	6947
								5%	6%	5%	9%	5%	5%
							grade 4 events	5996	16434	7545	27007	7664	7093
								5%	6%	5%	9%	5%	5%
							grade 5 events	876	5300	993	3750	1061	986
								0%	1%	0%	1%	0%	0%
							grade 6 events	13406	65084	19283	85206	17901	17485
								12%	23%	14%	30%	13%	13%
							grade 7 events	10700	19908	11310	12120	12181	11127
								9%	7%	8%	4%	8%	8%

2.2 Compared Parameters

Parameter	Planned	Actual	Parameter	Planned	Actual
Instrument	ACIS	ACIS	Obspar format version number	7	7
Detector	ACIS-456789	ACIS-456789	Obspar file type	PREDICTED	ACTUAL
Grating	NONE	NONE	Obspar update status	NONE	UPDATED
Data mode	FAINT	FAINT	On-chip summing requested	N	N
Observation mode	SECONDARY	SECONDARY	Subarray requested	NONE	NONE
[deg] Pointing RA	0	201.3331949433538	Alternating exposures requested	N	N
[deg] Pointing Dec	0	-38.38469873051208	[s] Primary exposure time	3.2	3.2
[deg] Pointing Roll	0.0	57.18593045013816			
[mm] SIM focus pos	-0.684267	-1.038866356238299			
[mm] SIM defocus	0	0.4944702831659975			
[mm] SIM translation stage pos	-190.132523	250.466033080201			
[mm] SIM translation stage offset	0	-0.01005468664627074			
[s] Observation start time (MET)	66741699.712255	66741698.943784			
Observation start date	2000-02-12T11:21:40	2000-02-12T11:21:38			
[s] Observation end time (MET)	66748999.762521	66748998.99405			
Observation end date	2000-02-12T13:23:20	2000-02-12T13:23:18			
Read mode	TIMED	TIMED			

2.3 Star Slots

2.4 FID Slots

A Summary

A.1 Status

V&V Scientist	Jen Lauer
V&V Date (YYYY-MM-DD)	2012.08.23
V&V Edition	1
V&V Disposition and Status	OK
V&V Charge Time	2.9039527628347

A.2 Comments