

V&V Reference Report

L2 ASCDS Version : 8.4.5

Observation 62036 - L2 Version 5
Chandra X-Ray Center

L2 Processing Date : Aug 28 2012

Contents

1	Front	2
2	OBI	3
2.1	OBI	3
2.1.1	Images	3
2.1.2	Bias	3
2.1.3	Parameters	4
2.1.4	Events	4
2.2	Compared Parameters	5
2.3	Star Slots	6
2.4	FID Slots	6
A	Summary	7
A.1	Status	7
A.2	Comments	7

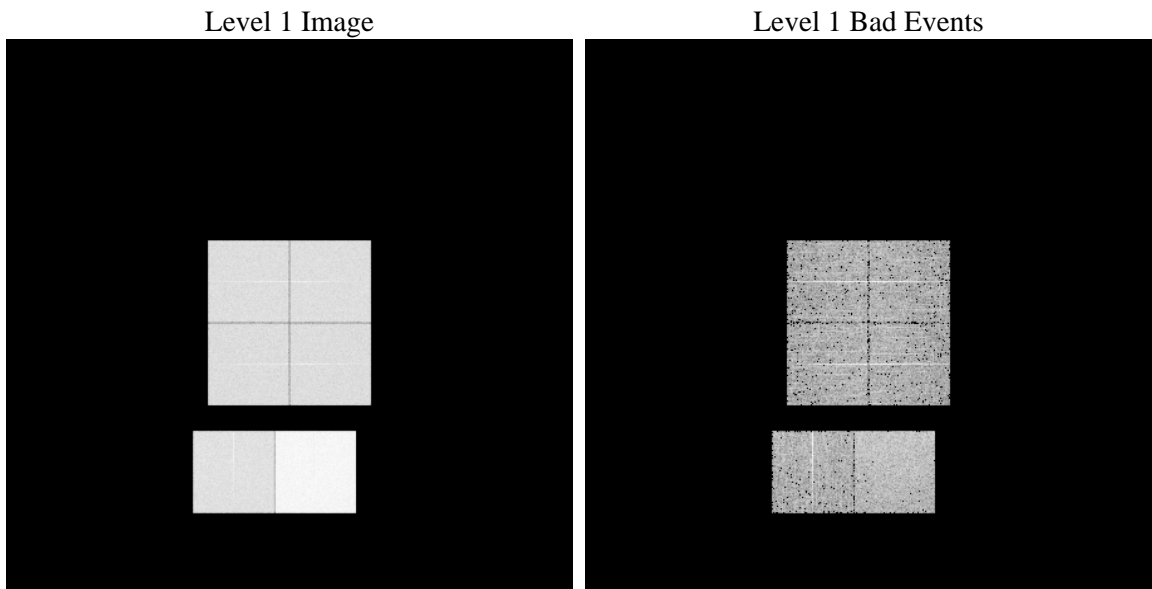
1 Front

seq_num	 	Sequence number
obs_id	62036	Observation id
title	ACIS-012367 diagnostics	Proposal title
observer	CHANDRA engineering request/realtime commanding	Principal investig
object	 	Source name
dtcycle	0	
cycle	P	events from which exps? Prim/Second/Both
ra_targ	0.0	Observer's specified target RA [deg]
dec_targ	0.0	Observer's specified target Dec [deg]
ra_nom	37.538230148403	Nominal RA [deg]
dec_nom	-66.340798091344	Nominal Dec [deg]
roll_nom	149.49579685836	Nominal Roll [deg]
revision	5	Processing version of data
ontime	5369.9266931117	Sum of GTIs [s]
livetime	5301.9294479418	Livetime [s]
ontime0	2287.7733285129	Sum of GTIs [s]
ontime1	2284.573448211	Sum of GTIs [s]
ontime2	2145.2497585714	Sum of GTIs [s]
ontime3	2145.0856783241	Sum of GTIs [s]
ontime6	2414.2969583571	Sum of GTIs [s]
ontime7	5369.9266931117	Sum of GTIs [s]
l2events	1337826	Number of level 2 events

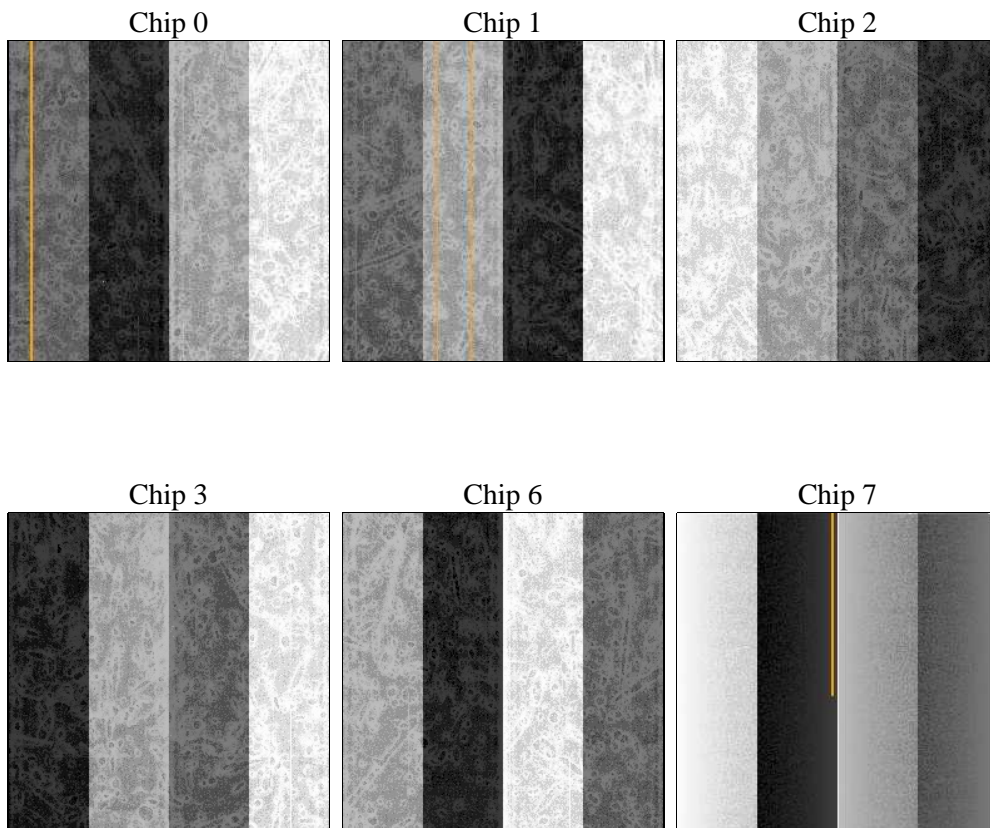
2 OBI

2.1 OBI

2.1.1 Images



2.1.2 Bias



2.1.3 Parameters

obi_num	0	Obi number	sched_exp_time	0.0	[s] Scheduled observation exposure time
ascdsver	8.4.5	Processing system revision	ontime	5369.9266931117	Sum of GTIs [s]
caldsver	4.5.1.1	 	ontime0	2287.7733285129	Sum of GTIs [s]
date	2012-08-28T18:52:23	Date and time of file creation	ontime1	2284.573448211	Sum of GTIs [s]
revision	5	Processing version of data	ontime2	2145.2497585714	Sum of GTIs [s]
			ontime3	2145.0856783241	Sum of GTIs [s]
			ontime6	2414.2969583571	Sum of GTIs [s]
			ontime7	5369.9266931117	Sum of GTIs [s]
			l1events	1527678	Number of level 1 events

2.1.4 Events

	ccd 0	ccd 1	ccd 2	ccd 3	ccd 6	ccd 7		ccd 0	ccd 1	ccd 2	ccd 3	ccd 6	ccd 7
level 1 events	206128	207830	198777	199188	229805	485950	grade 0 events	102809	103667	99239	100220	113473	117943
rejected events	20045	20337	21358	20526	21923	30091		49%	49%	49%	50%	49%	24%
rejected %	9%	9%	10%	10%	9%	6%	grade 1 events	610	605	615	625	577	301
								0%	0%	0%	0%	0%	0%
							grade 2 events	32708	33341	30930	31177	36175	101362
								15%	16%	15%	15%	15%	20%
							grade 3 events	12045	12072	11341	11367	12852	47267
								5%	5%	5%	5%	5%	9%
							grade 4 events	11841	11962	11239	11366	12985	46346
								5%	5%	5%	5%	5%	9%
							grade 5 events	1451	1429	1361	1409	1635	6564
								0%	0%	0%	0%	0%	1%
							grade 6 events	27510	27247	25498	25071	33253	144826
								13%	13%	12%	12%	14%	29%
							grade 7 events	17154	17507	18554	17953	18855	21341
								8%	8%	9%	9%	8%	4%

2.2 Compared Parameters

Parameter	Planned	Actual	Parameter	Planned	Actual
Instrument	ACIS	ACIS	Obspar format version number	7	7
Detector	ACIS-012367	ACIS-012367	Obspar file type	PREDICTED	ACTUAL
Grating	NONE	NONE	Obspar update status	NONE	UPDATED
Data mode	FAINT	FAINT	On-chip summing requested	N	N
Observation mode	SECONDARY	SECONDARY	Subarray requested	NONE	NONE
[deg] Pointing RA	0	37.53823014840329	Alternating exposures requested	N	N
[deg] Pointing Dec	0	-66.34079809134437	[s] Primary exposure time	3.2	3.2
[deg] Pointing Roll	0.0	149.495796858356			
[mm] SIM focus pos	-0.782348	-0.6828225247311905			
[mm] SIM defocus	0	0.8505141146731063			
[mm] SIM translation stage pos	-233.592463	250.466033080201			
[mm] SIM translation stage offset	0	-0.01005468664627074			
[s] Observation start time (MET)	76341790.667766	76341789.899299			
Observation start date	2000-06-02T14:03:11	2000-06-02T14:03:09			
[s] Observation end time (MET)	76352321.518154	76352320.749687			
Observation end date	2000-06-02T16:58:42	2000-06-02T16:58:40			
Read mode	TIMED	TIMED			

2.3 Star Slots

2.4 FID Slots

A Summary

A.1 Status

V&V Scientist	Jen Lauer
V&V Date (YYYY-MM-DD)	2012.08.31
V&V Edition	1
V&V Disposition and Status	OK
V&V Charge Time	5.3699266931117

A.2 Comments