

V&V Reference Report

L2 ASCDS Version : 8.4.5

Observation 61996 - L2 Version 5
Chandra X-Ray Center

L2 Processing Date : Aug 30 2012

Contents

1	Front	2
2	OBI	3
2.1	OBI	3
2.1.1	Images	3
2.1.2	Bias	3
2.1.3	Parameters	4
2.1.4	Events	4
2.2	Compared Parameters	5
2.3	Star Slots	6
2.4	FID Slots	6
A	Summary	7
A.1	Status	7
A.2	Comments	7

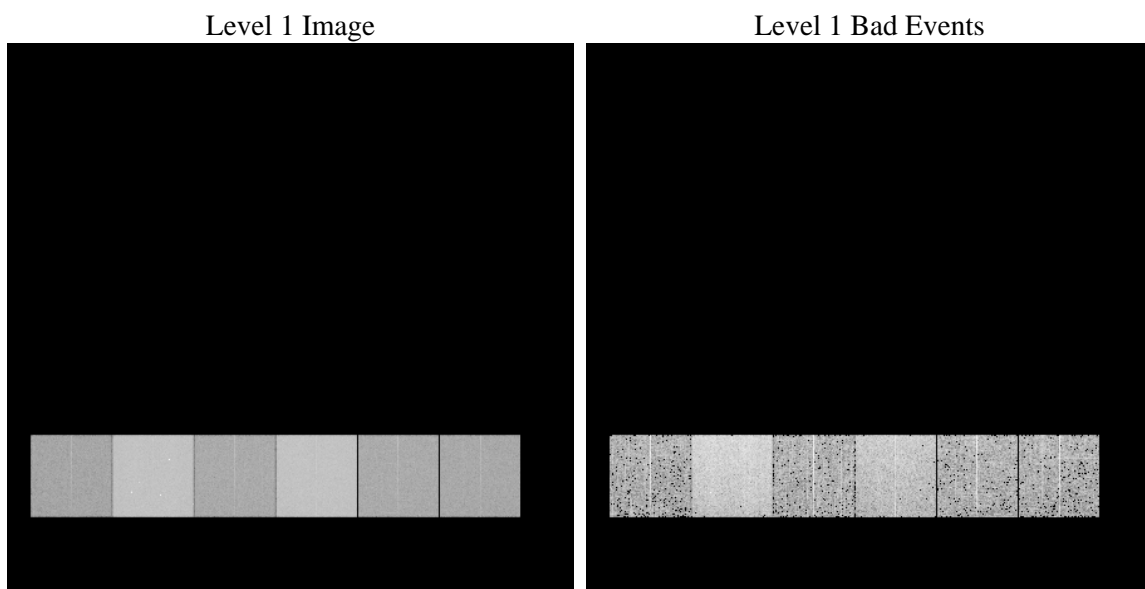
1 Front

seq_num	 	Sequence number
obs_id	61996	Observation id
title	ACIS-456789 diagnostics	Proposal title
observer	CHANDRA engineering request/realtime commanding	Principal investig
object	 	Source name
dtcycle	0	
cycle	P	events from which exps? Prim/Second/Both
ra_targ	0.0	Observer's specified target RA [deg]
dec_targ	0.0	Observer's specified target Dec [deg]
ra_nom	325.38246922852	Nominal RA [deg]
dec_nom	60.098372156891	Nominal Dec [deg]
roll_nom	151.0014536154	Nominal Roll [deg]
revision	5	Processing version of data
ontime	4140.9770084471	Sum of GTIs [s]
livetime	4088.5414641691	Livetime [s]
ontime4	1635.7906425297	Sum of GTIs [s]
ontime5	4430.2611672431	Sum of GTIs [s]
ontime6	1807.5247819126	Sum of GTIs [s]
ontime7	4140.9770084471	Sum of GTIs [s]
ontime8	1820.5709620416	Sum of GTIs [s]
ontime9	1749.9406860918	Sum of GTIs [s]
l2events	1214689	Number of level 2 events

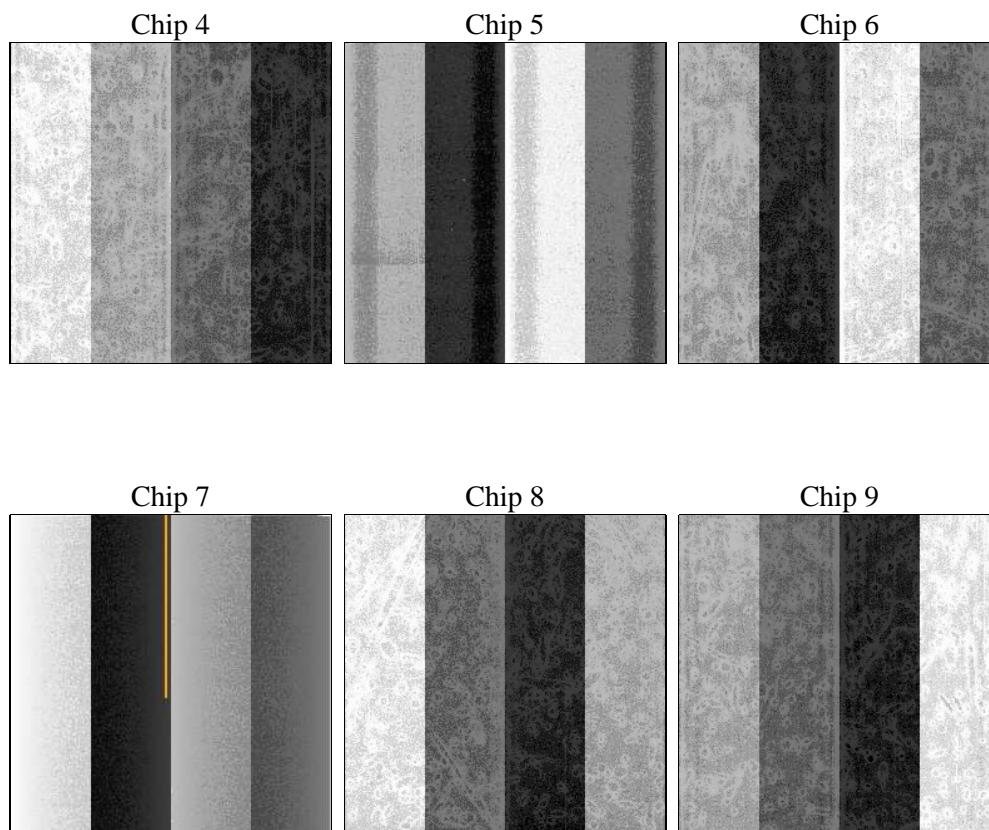
2 OBI

2.1 OBI

2.1.1 Images



2.1.2 Bias



2.1.3 Parameters

obi_num	0	Obi number	sched_exp_time	0.0	[s] Scheduled observation exposure time
ascdsver	8.4.5	Processing system revision	ontime	4140.9770084471	Sum of GTIs [s]
caldsver	4.5.1.1	 	ontime4	1635.7906425297	Sum of GTIs [s]
date	2012-08-30T18:17:38	Date and time of file creation	ontime5	4430.2611672431	Sum of GTIs [s]
revision	5	Processing version of data	ontime6	1807.5247819126	Sum of GTIs [s]
			ontime7	4140.9770084471	Sum of GTIs [s]
			ontime8	1820.5709620416	Sum of GTIs [s]
			ontime9	1749.9406860918	Sum of GTIs [s]
			l1events	1423867	Number of level 1 events

2.1.4 Events

	ccd 4	ccd 5	ccd 6	ccd 7	ccd 8	ccd 9		ccd 4	ccd 5	ccd 6	ccd 7	ccd 8	ccd 9
level 1 events	142092	391641	169124	393288	170200	157522	grade 0 events	70247	88931	81330	90547	82596	76032
rejected events	18089	47458	20402	32615	20379	19002		49%	22%	48%	23%	48%	48%
rejected %	12%	12%	12%	8%	11%	12%	grade 1 events	407	460	503	353	455	486
								0%	0%	0%	0%	0%	0%
							grade 2 events	21657	115417	25867	80883	26155	24477
								15%	29%	15%	20%	15%	15%
							grade 3 events	7678	23666	9179	36884	9461	8502
								5%	6%	5%	9%	5%	5%
							grade 4 events	7453	23851	9050	36513	9704	8531
								5%	6%	5%	9%	5%	5%
							grade 5 events	1103	9307	1272	7116	1344	1264
								0%	2%	0%	1%	0%	0%
							grade 6 events	16968	92569	23296	115888	21905	20984
								11%	23%	13%	29%	12%	13%
							grade 7 events	16579	37440	18627	25104	18580	17246
								11%	9%	11%	6%	10%	10%

2.2 Compared Parameters

Parameter	Planned	Actual	Parameter	Planned	Actual
Instrument	ACIS	ACIS	Obspar format version number	7	7
Detector	ACIS-456789	ACIS-456789	Obspar file type	PREDICTED	ACTUAL
Grating	NONE	NONE	Obspar update status	NONE	UPDATED
Data mode	FAINT	FAINT	On-chip summing requested	N	N
Observation mode	SECONDARY	SECONDARY	Subarray requested	NONE	NONE
[deg] Pointing RA	0	325.382469228516	Alternating exposures requested	N	N
[deg] Pointing Dec	0	60.09837215689139	[s] Primary exposure time	3.2	3.2
[deg] Pointing Roll	0.0	151.0014536153975			
[mm] SIM focus pos	-0.684267	-0.6828225247311905			
[mm] SIM defocus	0	0.8505141146731063			
[mm] SIM translation stage pos	-190.132523	250.466033080201			
[mm] SIM translation stage offset	0	-0.01005468664627074			
[s] Observation start time (MET)	79950141.350705	79950140.582261			
Observation start date	2000-07-14T08:22:21	2000-07-14T08:22:20			
[s] Observation end time (MET)	79993531.652321	79993530.883865			
Observation end date	2000-07-14T20:25:32	2000-07-14T20:25:30			
Read mode	TIMED	TIMED			

2.3 Star Slots

2.4 FID Slots

A Summary

A.1 Status

V&V Scientist	Jen Lauer
V&V Date (YYYY-MM-DD)	2012.09.05
V&V Edition	1
V&V Disposition and Status	OK
V&V Charge Time	4.1409770084471

A.2 Comments