

# V&V Reference Report

## L2 ASCDS Version : 7.6.9

Observation 61626 - L2 Version 001  
Chandra X-Ray Center

L2 Processing Date : Dec 19 2006

## Contents

<b>1</b>	<b>Front</b>	<b>2</b>
<b>2</b>	<b>OBI</b>	<b>3</b>
2.1	OBI . . . . .	3
2.1.1	Images . . . . .	3
2.1.2	Bias . . . . .	3
2.1.3	Parameters . . . . .	4
2.1.4	Events . . . . .	4
2.2	Compared Parameters . . . . .	5
2.3	Aspect . . . . .	6
2.4	Star Slots . . . . .	8
2.5	FID Slots . . . . .	8
<b>A</b>	<b>Summary</b>	<b>9</b>
A.1	Status . . . . .	9
A.2	Comments . . . . .	9

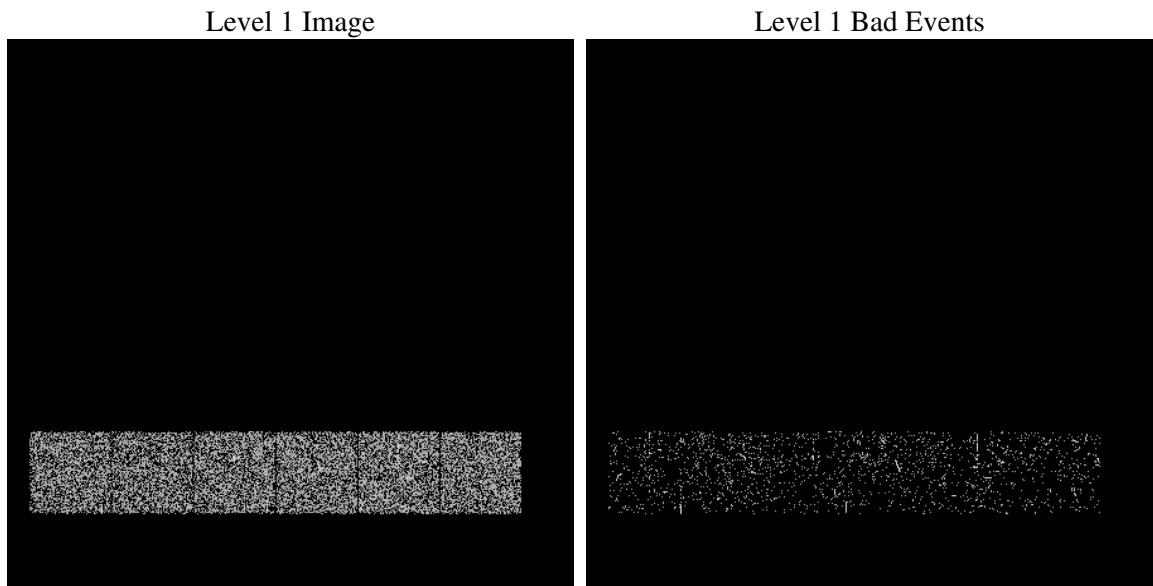
# 1 Front

seq_num	&#160
obs_id	61626
title	ACIS-456789 diagnostics
observer	CHANDRA engineering request/realtime commanding
object	&#160
dtcycle	0
cycle	P
ra_targ	0.0
dec_targ	0.0
ra_nom	259.97764882646
dec_nom	-14.981064923213
roll_nom	106.13137571768
revision	3
ontime	51.200000047684
livetime	50.551674818141
ontime4	51.200000047684
ontime5	51.200000047684
ontime6	51.200000047684
ontime7	51.200000047684
ontime8	51.200000047684
ontime9	51.200000047684
l2events	18470

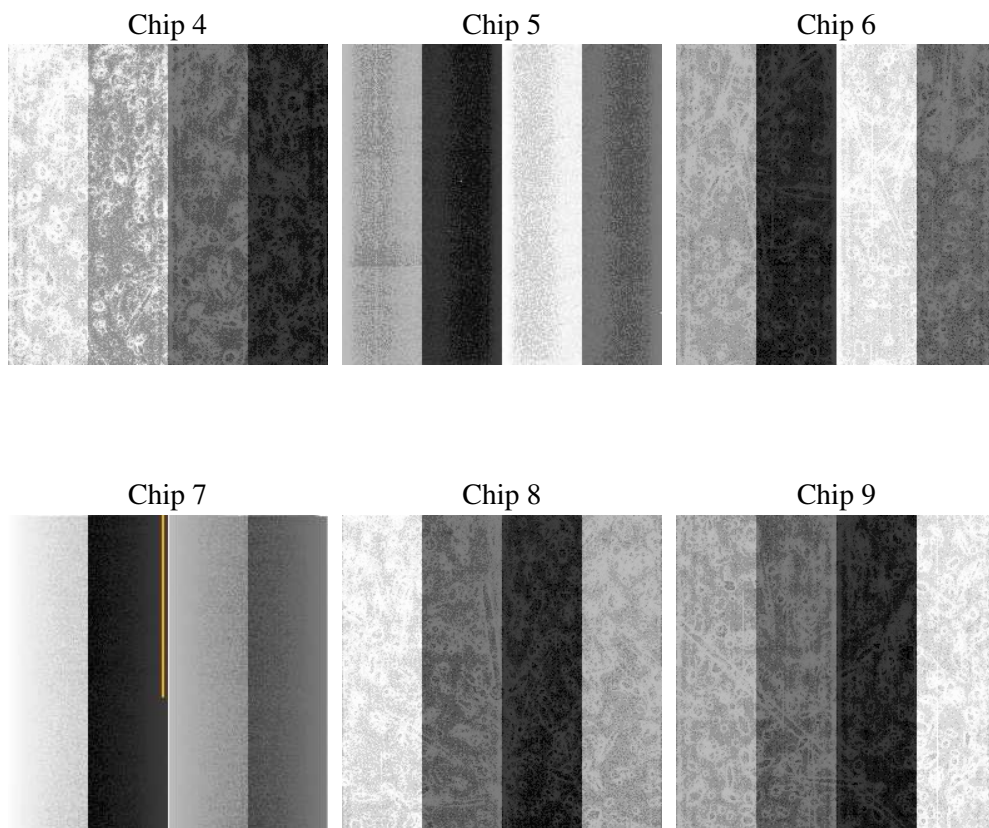
## 2 OBI

### 2.1 OBI

#### 2.1.1 Images



#### 2.1.2 Bias



### 2.1.3 Parameters

obi_num	0
ascdsver	7.6.9
caldbver	3.2.4
date	2006-12-19T04:48:01
revision	3

sched_exp_time	0.0
ontime	51.856041833758
ontime4	51.856041833758
ontime5	51.856041833758
ontime6	51.856041833758
ontime7	51.856041833758
ontime8	51.856041833758
ontime9	51.856041833758
l1events	22130

### 2.1.4 Events

	ccd 4	ccd 5	ccd 6	ccd 7	ccd 8	ccd 9
level 1 events	3591	3449	3741	3731	3879	3739
rejected events	438	509	379	427	456	355
rejected %	12%	14%	10%	11%	11%	9%

	ccd 4	ccd 5	ccd 6	ccd 7	ccd 8	ccd 9
grade 0 events	1815	379	1774	634	1867	1800
	50%	10%	47%	16%	48%	48%
grade 1 events	11	2	13	0	8	5
	0%	0%	0%	0%	0%	0%
grade 2 events	551	1407	636	956	590	582
	15%	40%	17%	25%	15%	15%
grade 3 events	198	91	196	251	213	254
	5%	2%	5%	6%	5%	6%
grade 4 events	189	99	212	252	216	209
	5%	2%	5%	6%	5%	5%
grade 5 events	28	63	36	48	39	30
	0%	1%	0%	1%	1%	0%
grade 6 events	400	964	544	1211	537	539
	11%	27%	14%	32%	13%	14%
grade 7 events	399	444	330	379	409	320
	11%	12%	8%	10%	10%	8%

## 2.2 Compared Parameters

Parameter	Planned	Actual	Parameter	Planned	Actual
Instrument	ACIS	ACIS	Obspar format version number	6	6
Detector	ACIS-456789	ACIS-456789	Obspar file type	PREDICTED	ACTUAL
Grating	NONE	NONE	Obspar update status	NONE	UPDATED
Data mode	FAINT	FAINT	On-chip summing requested	N	N
Observation mode	SECONDARY	SECONDARY	Subarray requested	NONE	NONE
Pointing RA	0	259.9776488264551	Alternating exposures requested	N	N
Pointing Dec	0	-14.98106492321337	Primary exposure time	0.000000	3.2
Pointing Roll	0.0	106.1313757176803			
SIM focus pos (mm)	-0.684267	-0.7809083437167272			
SIM defocus (mm)	0	0.7524282956875696			
SIM translation stage pos (mm)	-190.132523	250.466033080201			
SIM translation stage offset (mm)	0	-0.01005468664627074			
Observation start time	106712488.522	106712487.75308			
Observation start date	2001-05-20T02:21:29	2001-05-20T02:21:27			
Observation end time	106726772.922	106726772.15363			
Observation end date	2001-05-20T06:19:33	2001-05-20T06:19:32			
Read mode	TIMED	TIMED			

## 2.3 Aspect



## 2.4 Star Slots

## 2.5 FID Slots



## A Summary

### A.1 Status

V&V Scientist	Beth Sundheim
V&V Date (YYYY-MM-DD)	2006.12.19
V&V Edition	1
V&V Disposition and Status	OK
V&V Charge Time	0.0512

### A.2 Comments