

# V&V Reference Report

## L2 ASCDS Version : 7.6.9

Observation 61596 - L2 Version 001  
Chandra X-Ray Center

L2 Processing Date : Nov 28 2006

## Contents

<b>1</b>	<b>Front</b>	<b>2</b>
<b>2</b>	<b>OBI</b>	<b>3</b>
2.1	OBI . . . . .	3
2.1.1	Images . . . . .	3
2.1.2	Bias . . . . .	3
2.1.3	Parameters . . . . .	4
2.1.4	Events . . . . .	4
2.2	Compared Parameters . . . . .	5
2.3	Aspect . . . . .	6
2.4	Star Slots . . . . .	8
2.5	FID Slots . . . . .	8
<b>A</b>	<b>Summary</b>	<b>9</b>
A.1	Status . . . . .	9
A.2	Comments . . . . .	9

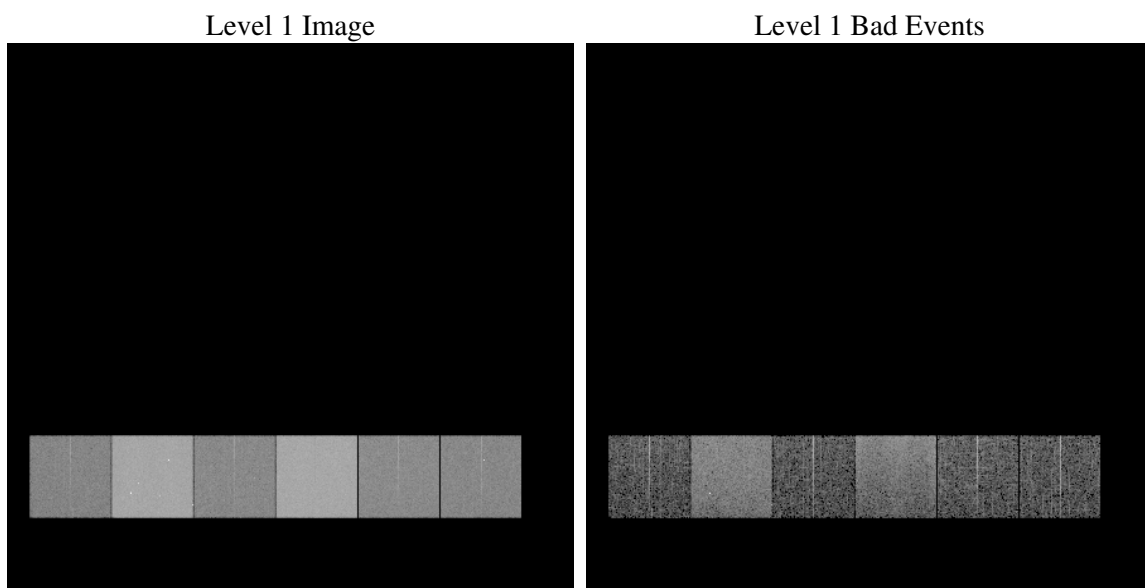
# 1 Front

seq_num	&#160
obs_id	61596
title	ACIS-456789 diagnostics
observer	CHANDRA engineering request/realtime commanding
object	&#160
dtcycle	0
cycle	P
ra_targ	0.0
dec_targ	0.0
ra_nom	252.48113806497
dec_nom	-5.0217159828606
roll_nom	196.38223234123
revision	2
ontime	5045.5366700292
livetime	4981.6470466558
ontime4	1956.9794567376
ontime5	5434.4937679023
ontime6	2089.8210364729
ontime7	5045.5366700292
ontime8	2167.6880464405
ontime9	2067.0106664449
l2events	1205595

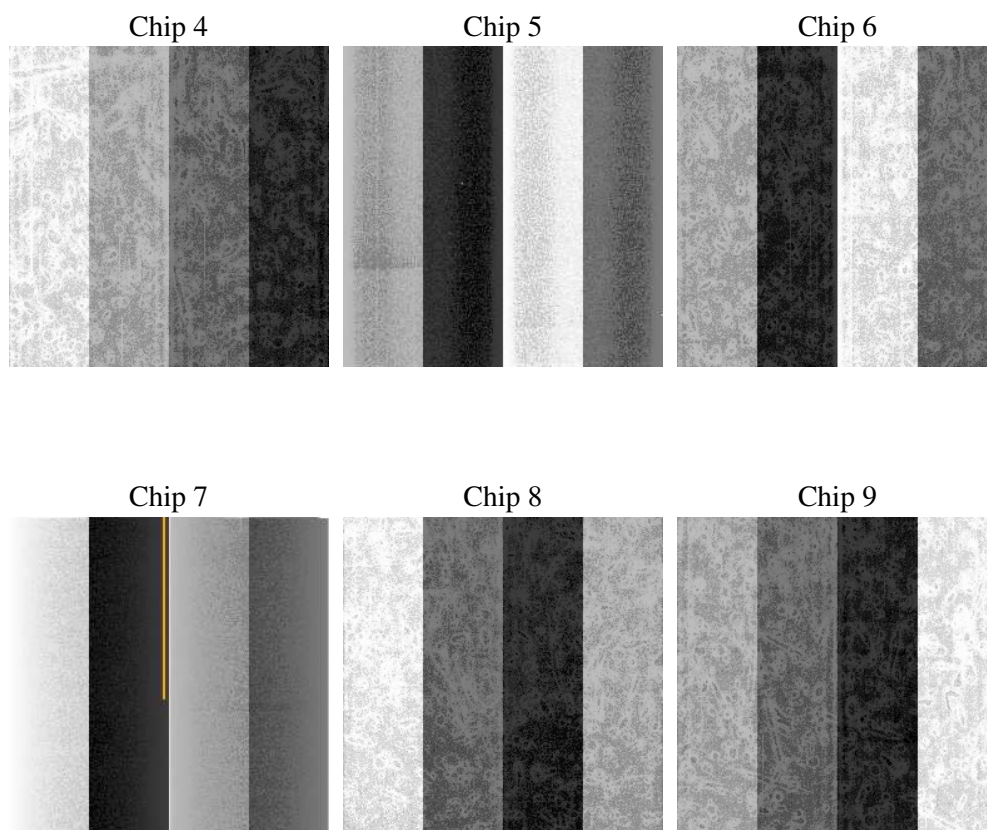
## 2 OBI

### 2.1 OBI

#### 2.1.1 Images



#### 2.1.2 Bias



### 2.1.3 Parameters

obi_num	0
ascdsver	7.6.9
caldbver	3.2.4
date	2006-11-28T07:37:52
revision	2

sched_exp_time	0.0
ontime	5046.2664747238
ontime4	1957.5861414373
ontime5	5435.1825325936
ontime6	2090.4687611759
ontime7	5046.2664747238
ontime8	2168.2536911368
ontime9	2067.7815111428
l1events	1430602

### 2.1.4 Events

	ccd 4	ccd 5	ccd 6	ccd 7	ccd 8	ccd 9
level 1 events	151200	377445	169843	387928	179188	164998
rejected events	19324	51262	18866	39993	21810	19824
rejected %	12%	13%	11%	10%	12%	12%

	ccd 4	ccd 5	ccd 6	ccd 7	ccd 8	ccd 9
grade 0 events	73460	41864	81157	65528	85397	78472
	48%	11%	47%	16%	47%	47%
grade 1 events	495	136	552	156	527	546
	0%	0%	0%	0%	0%	0%
grade 2 events	22983	155146	26313	104552	27360	25505
	15%	41%	15%	26%	15%	15%
grade 3 events	8180	11541	9190	25874	9928	8957
	5%	3%	5%	6%	5%	5%
grade 4 events	8100	11430	9328	25762	10046	9010
	5%	3%	5%	6%	5%	5%
grade 5 events	1210	6247	1444	5535	1584	1447
	0%	1%	0%	1%	0%	0%
grade 6 events	19153	106202	24989	126219	24647	23230
	12%	28%	14%	32%	13%	14%
grade 7 events	17619	44879	16870	34302	19699	17831
	11%	11%	9%	8%	10%	10%

## 2.2 Compared Parameters

Parameter	Planned	Actual	Parameter	Planned	Actual
Instrument	ACIS	ACIS	Obspar format version number	6	6
Detector	ACIS-456789	ACIS-456789	Obspar file type	PREDICTED	ACTUAL
Grating	NONE	NONE	Obspar update status	NONE	UPDATED
Data mode	FAINT	FAINT	On-chip summing requested	N	N
Observation mode	SECONDARY	SECONDARY	Subarray requested	NONE	NONE
Pointing RA	0	252.4811380649718	Alternating exposures requested	N	N
Pointing Dec	0	-5.021715982860579	Primary exposure time	3.2	3.2
Pointing Roll	0.0	196.3822323412282			
SIM focus pos (mm)	-0.684267	-0.7809083437167272			
SIM defocus (mm)	0	0.7524282956875696			
SIM translation stage pos (mm)	-190.132523	250.466033080201			
SIM translation stage offset (mm)	0	-0.01005468664627074			
Observation start time	108508641.191494	108508640.42302			
Observation start date	2001-06-09T21:17:21	2001-06-09T21:17:20			
Observation end time	108519791.141928	108519790.37345			
Observation end date	2001-06-10T00:23:11	2001-06-10T00:23:10			
Read mode	TIMED	TIMED			

## 2.3 Aspect



## 2.4 Star Slots

## 2.5 FID Slots



## A Summary

### A.1 Status

V&V Scientist	Jen Lauer
V&V Date (YYYY-MM-DD)	2006.11.28
V&V Edition	1
V&V Disposition and Status	OK
V&V Charge Time	5.04553667

### A.2 Comments