

V&V Reference Report

L2 ASCDS Version : 8.4.5

Observation 61346 - L2 Version 3
Chandra X-Ray Center

L2 Processing Date : Oct 1 2012

Contents

1	Front	2
2	OBI	3
2.1	OBI	3
2.1.1	Images	3
2.1.2	Bias	3
2.1.3	Parameters	4
2.1.4	Events	4
2.2	Compared Parameters	5
2.3	Star Slots	6
2.4	FID Slots	6
A	Summary	7
A.1	Status	7
A.2	Comments	7

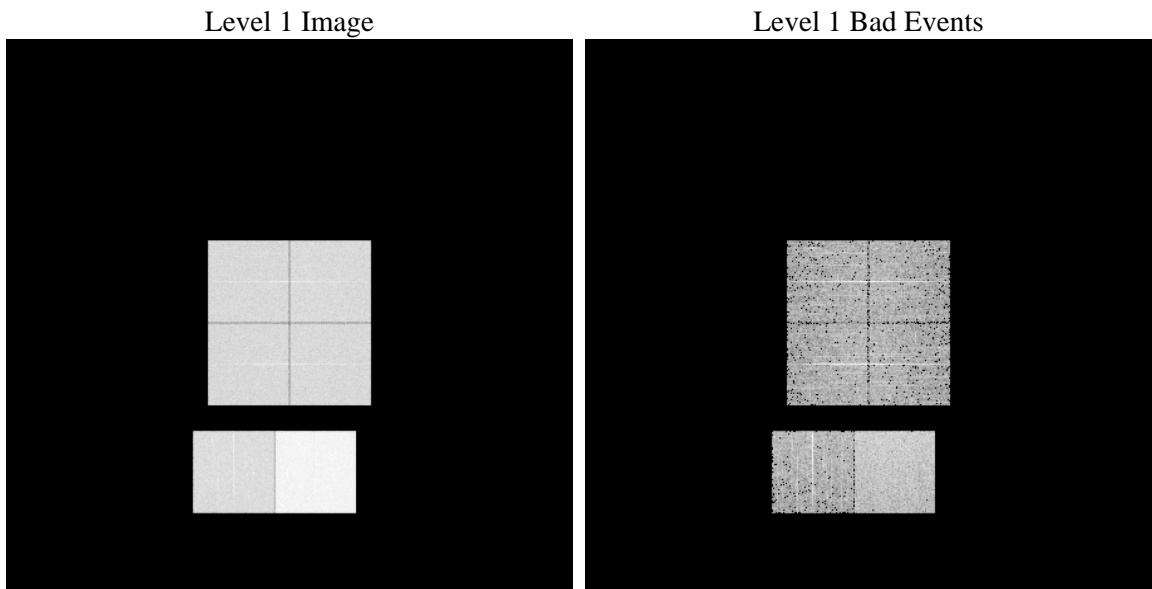
1 Front

seq_num	 	Sequence number
obs_id	61346	Observation id
title	ACIS-012367 diagnostics	Proposal title
observer	CHANDRA engineering request/realtime commanding	Principal investig
object	 	Source name
dtcycle	0	
cycle	P	events from which exps? Prim/Second/Both
ra_targ	0.0	Observer's specified target RA [deg]
dec_targ	0.0	Observer's specified target Dec [deg]
ra_nom	177.99701068631	Nominal RA [deg]
dec_nom	-5.9715327165594	Nominal Dec [deg]
roll_nom	63.25880873322	Nominal Roll [deg]
revision	3	Processing version of data
ontime	7621.8368166238	Sum of GTIs [s]
livetime	7525.3245295326	Livetime [s]
ontime0	2965.5474065542	Sum of GTIs [s]
ontime1	3098.429169178	Sum of GTIs [s]
ontime2	2889.5871310979	Sum of GTIs [s]
ontime3	2935.3834867924	Sum of GTIs [s]
ontime6	3207.4241312444	Sum of GTIs [s]
ontime7	7621.8368166238	Sum of GTIs [s]
l2events	1218376	Number of level 2 events

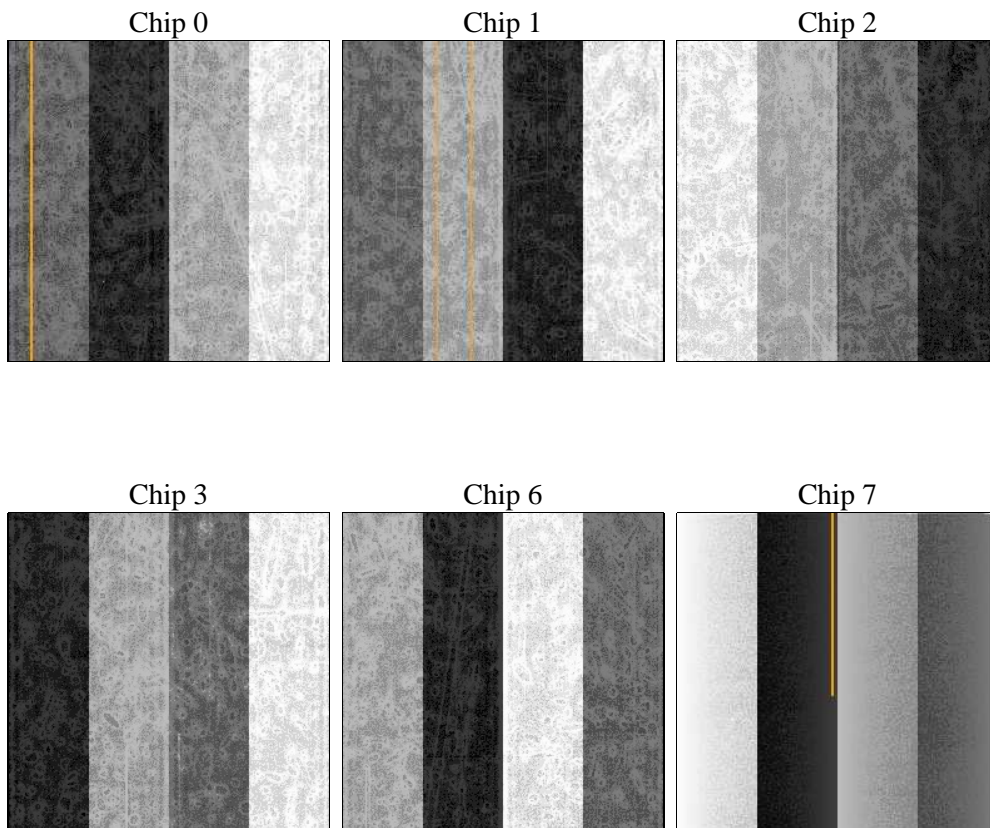
2 OBI

2.1 OBI

2.1.1 Images



2.1.2 Bias



2.1.3 Parameters

obi_num	0	Obi number	sched_exp_time	0.0	[s] Scheduled observation exposure time
ascdsver	8.4.5	Processing system revision	ontime	7621.8368166238	Sum of GTIs [s]
caldsver	4.5.2	 	ontime0	2965.5474065542	Sum of GTIs [s]
date	2012-10-01T05:05:49	Date and time of file creation	ontime1	3098.429169178	Sum of GTIs [s]
revision	3	Processing version of data	ontime2	2889.5871310979	Sum of GTIs [s]
			ontime3	2935.3834867924	Sum of GTIs [s]
			ontime6	3207.4241312444	Sum of GTIs [s]
			ontime7	7621.8368166238	Sum of GTIs [s]
			l1events	1416529	Number of level 1 events

2.1.4 Events

	ccd 0	ccd 1	ccd 2	ccd 3	ccd 6	ccd 7		ccd 0	ccd 1	ccd 2	ccd 3	ccd 6	ccd 7
level 1 events	182083	189330	181212	183706	207819	472379	grade 0 events	88723	93053	88496	90827	100466	109923
rejected events	20890	20428	21836	21133	23313	39632		48%	49%	48%	49%	48%	23%
rejected %	11%	10%	12%	11%	11%	8%	grade 1 events	472	496	435	474	458	291
								0%	0%	0%	0%	0%	0%
							grade 2 events	28653	30081	27899	28675	32065	95893
								15%	15%	15%	15%	15%	20%
							grade 3 events	10068	10574	10056	10334	11491	44231
								5%	5%	5%	5%	5%	9%
							grade 4 events	10134	10603	10258	10257	11397	43904
								5%	5%	5%	5%	5%	9%
							grade 5 events	1458	1532	1398	1450	1761	8038
								0%	0%	0%	0%	0%	1%
							grade 6 events	23790	24591	22667	22480	29087	138949
								13%	12%	12%	12%	13%	29%
							grade 7 events	18785	18400	20003	19209	21094	31150
								10%	9%	11%	10%	10%	6%

2.2 Compared Parameters

Parameter	Planned	Actual	Parameter	Planned	Actual
Instrument	ACIS	ACIS	Obspar format version number	7	7
Detector	ACIS-012367	ACIS-012367	Obspar file type	PREDICTED	ACTUAL
Grating	NONE	NONE	Obspar update status	NONE	UPDATED
Data mode	FAINT	FAINT	On-chip summing requested	N	N
Observation mode	SECONDARY	SECONDARY	Subarray requested	NONE	NONE
[deg] Pointing RA	0	177.9970106863121	Alternating exposures requested	N	N
[deg] Pointing Dec	0	-5.971532716559416	[s] Primary exposure time	0.000000	3.2
[deg] Pointing Roll	0.0	63.25880873322024			
[mm] SIM focus pos	-0.782348	-0.6828225247311905			
[mm] SIM defocus	0	0.8505141146731063			
[mm] SIM translation stage pos	-233.592463	250.466033080201			
[mm] SIM translation stage offset	0	-0.01005468664627074			
[s] Observation start time (MET)	127704936.252	127704935.48362			
Observation start date	2002-01-18T01:35:36	2002-01-18T01:35:35			
[s] Observation end time (MET)	127734886.753	127734885.98483			
Observation end date	2002-01-18T09:54:47	2002-01-18T09:54:45			
Read mode	TIMED	TIMED			

2.3 Star Slots

2.4 FID Slots

A Summary

A.1 Status

V&V Scientist	Jen Lauer
V&V Date (YYYY-MM-DD)	2012.10.03
V&V Edition	1
V&V Disposition and Status	OK
V&V Charge Time	7.6218368166238

A.2 Comments