

V&V Reference Report

L2 ASCDS Version : 7.6.8.1

Observation 61336 - L2 Version 001
Chandra X-Ray Center

L2 Processing Date : Aug 29 2006

Contents

1	Front	2
2	OBI	3
2.1	OBI	3
2.1.1	Images	3
2.1.2	Bias	3
2.1.3	Parameters	4
2.1.4	Events	4
2.2	Compared Parameters	5
2.3	Aspect	6
2.4	Star Slots	8
2.5	FID Slots	8
A	Summary	9
A.1	Status	9
A.2	Comments	9

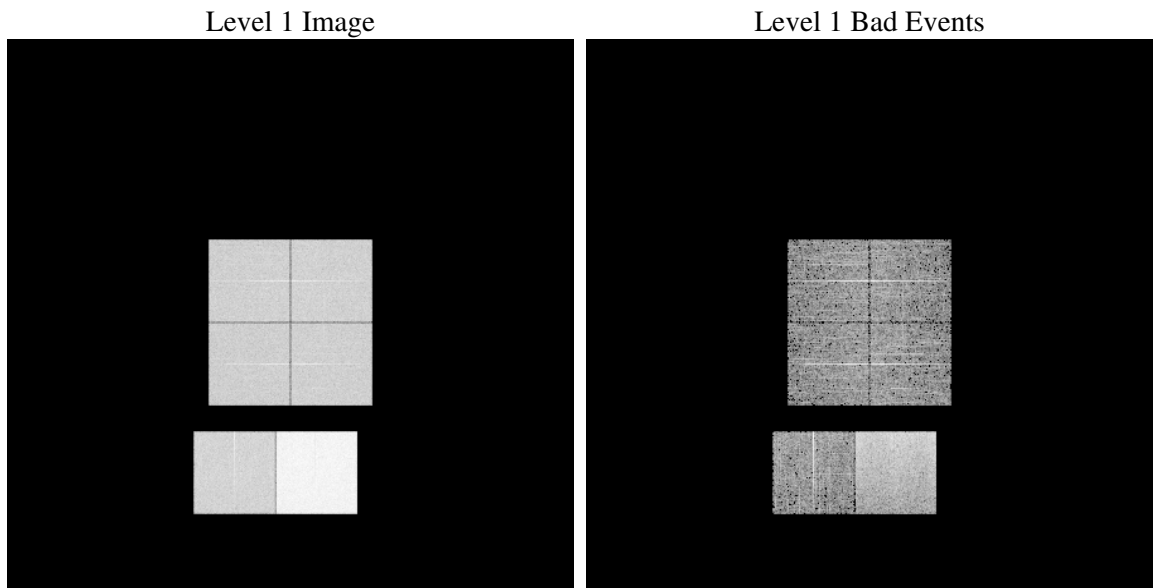
1 Front

seq_num	
obs_id	61336
title	ACIS-012367 diagnostics
observer	CHANDRA engineering request/realtime commanding
object	
dtcycle	0
cycle	P
ra_targ	0.0
dec_targ	0.0
ra_nom	350.03692829045
dec_nom	39.995570229936
roll_nom	318.28719043915
revision	2
ontime	8294.5408060253
livetime	8189.5103359665
ontime0	3280.797119841
ontime1	3358.6228404492
ontime2	3109.1051366329
ontime3	3177.002338022
ontime6	3436.143393591
ontime7	8294.5408060253
l2events	1297575

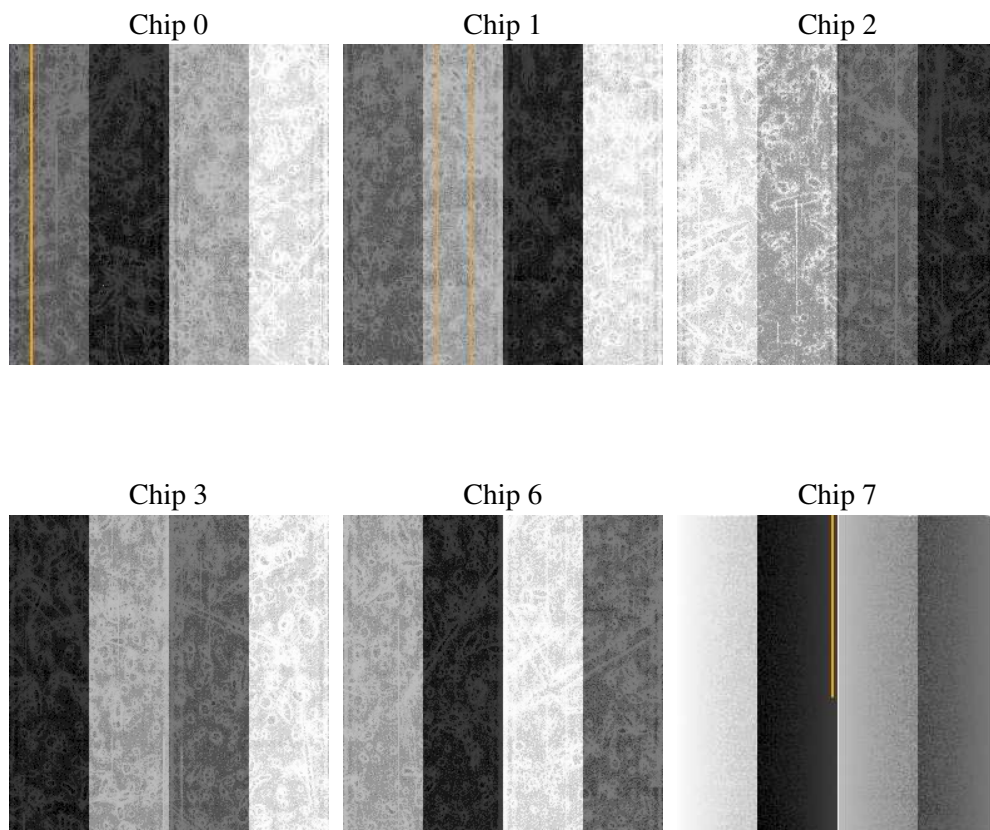
2 OBI

2.1 OBI

2.1.1 Images



2.1.2 Bias



2.1.3 Parameters

obi_num	1
ascdsver	7.6.8.1
caldbver	3.2.3
date	2006-08-30T00:08:16
revision	2

sched_exp_time	0.0
ontime	8296.9531441182
ontime0	3283.1684179306
ontime1	3360.9530985504
ontime2	3111.3943547308
ontime3	3179.4557161182
ontime6	3438.7375400811
ontime7	8296.9531441182
l1events	1535249

2.1.4 Events

	ccd 0	ccd 1	ccd 2	ccd 3	ccd 6	ccd 7
level 1 events	200950	205572	193843	199283	222404	513197
rejected events	24112	23552	23844	24873	26313	60018
rejected %	11%	11%	12%	12%	11%	11%

	ccd 0	ccd 1	ccd 2	ccd 3	ccd 6	ccd 7
grade 0 events	97514	100451	94532	97405	107156	83898
	48%	48%	48%	48%	48%	16%
grade 1 events	495	495	490	532	554	173
	0%	0%	0%	0%	0%	0%
grade 2 events	31127	32149	29910	30787	33956	136075
	15%	15%	15%	15%	15%	26%
grade 3 events	11414	11529	10657	11197	12271	34481
	5%	5%	5%	5%	5%	6%
grade 4 events	11206	11501	10697	11040	11977	33679
	5%	5%	5%	5%	5%	6%
grade 5 events	1723	1641	1529	1669	1892	8279
	0%	0%	0%	0%	0%	1%
grade 6 events	25765	26561	24400	24143	30916	165216
	12%	12%	12%	12%	13%	32%
grade 7 events	21706	21245	21628	22510	23682	51396
	10%	10%	11%	11%	10%	10%

2.2 Compared Parameters

Parameter	Planned	Actual	Parameter	Planned	Actual
Instrument	ACIS	ACIS	Obspar format version number	6	6
Detector	ACIS-012367	ACIS-012367	Obspar file type	PREDICTED	ACTUAL
Grating	NONE	NONE	Obspar update status	NONE	UPDATED
Data mode	FAINT	FAINT	On-chip summing requested	N	N
Observation mode	SECONDARY	SECONDARY	Subarray requested	NONE	NONE
Pointing RA	0	350.036928290445	Alternating exposures requested	N	N
Pointing Dec	0	39.99557022993555	Primary exposure time	0.000000	3.2
Pointing Roll	0.0	318.2871904391483			
SIM focus pos (mm)	-0.782348	-1.428180813131781			
SIM defocus (mm)	0	0.1051558262725154			
SIM translation stage pos (mm)	-233.592463	250.466033080201			
SIM translation stage offset (mm)	0	-0.01005468664627074			
Observation start time	128419027.131	128419026.36238			
Observation start date	2002-01-26T07:57:07	2002-01-26T07:57:06			
Observation end time	128441175.332	128441174.56328			
Observation end date	2002-01-26T14:06:15	2002-01-26T14:06:14			
Read mode	TIMED	TIMED			

2.3 Aspect

2.4 Star Slots

2.5 FID Slots

A Summary

A.1 Status

V&V Scientist	Jen Lauer
V&V Date (YYYY-MM-DD)	2006.08.30
V&V Edition	1
V&V Disposition and Status	OK
V&V Charge Time	8.2945408

A.2 Comments