

V&V Reference Report

L2 ASCDS Version : 8.4.5

Observation 61236 - L2 Version 3
Chandra X-Ray Center

L2 Processing Date : Oct 5 2012

Contents

1	Front	2
2	OBI	3
2.1	OBI	3
2.1.1	Images	3
2.1.2	Bias	3
2.1.3	Parameters	4
2.1.4	Events	4
2.2	Compared Parameters	5
2.3	Star Slots	6
2.4	FID Slots	6
A	Summary	7
A.1	Status	7
A.2	Comments	7

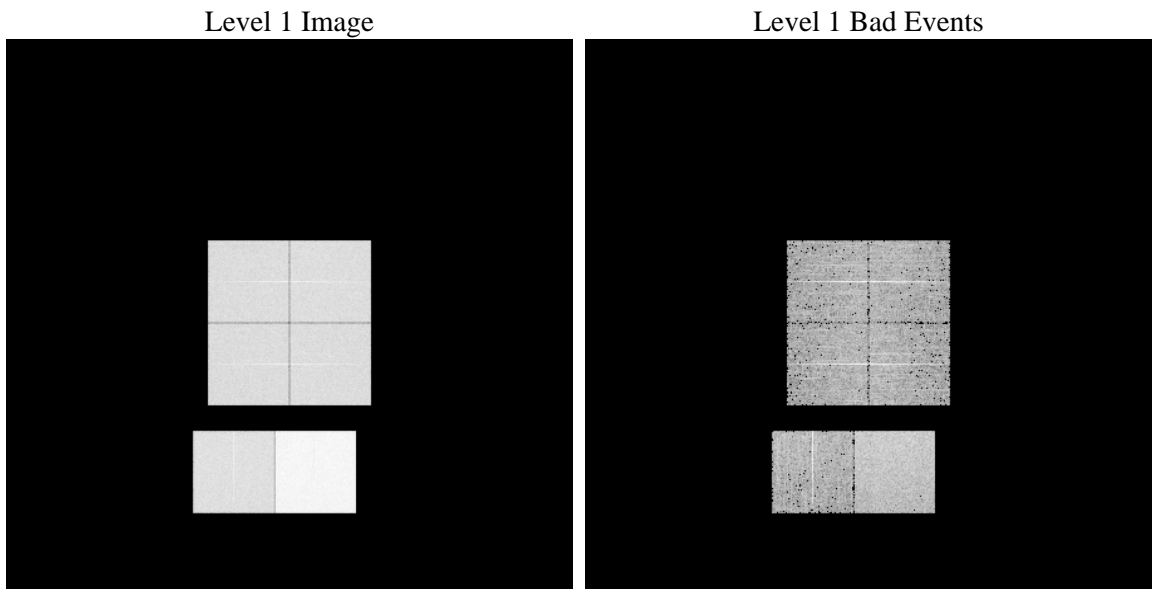
1 Front

seq_num	 	Sequence number
obs_id	61236	Observation id
title	ACIS-012367 diagnostics	Proposal title
observer	CHANDRA engineering request/realtime commanding	Principal investig
object	 	Source name
dtcycle	0	
cycle	P	events from which exps? Prim/Second/Both
ra_targ	0.0	Observer's specified target RA [deg]
dec_targ	0.0	Observer's specified target Dec [deg]
ra_nom	251.73150619606	Nominal RA [deg]
dec_nom	-3.4781406141242	Nominal Dec [deg]
roll_nom	97.389769943123	Nominal Roll [deg]
revision	3	Processing version of data
ontime	8463.9999684691	Sum of GTIs [s]
livetime	8356.8237044595	Livetime [s]
ontime0	3509.5115244389	Sum of GTIs [s]
ontime1	3658.6394277811	Sum of GTIs [s]
ontime2	3386.4341843724	Sum of GTIs [s]
ontime3	3446.964076221	Sum of GTIs [s]
ontime6	3762.433024019	Sum of GTIs [s]
ontime7	8463.9999684691	Sum of GTIs [s]
l2events	1329452	Number of level 2 events

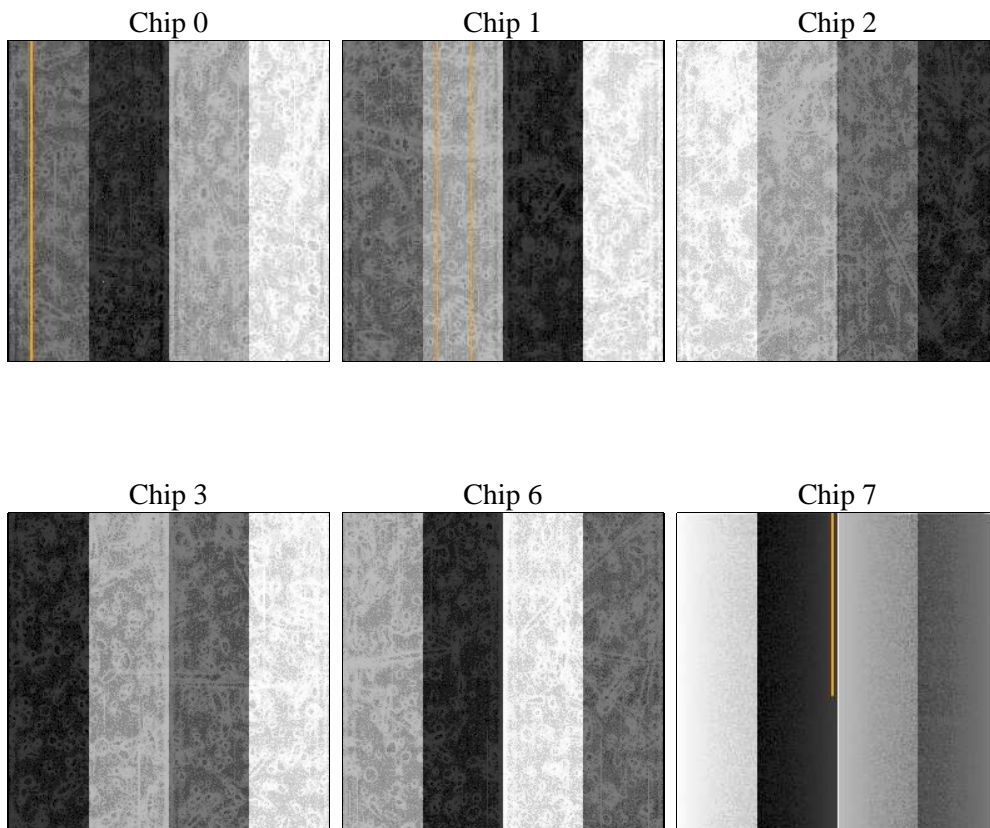
2 OBI

2.1 OBI

2.1.1 Images



2.1.2 Bias



2.1.3 Parameters

obi_num	2	Obi number	sched_exp_time	0.0	[s] Scheduled observation exposure time
ascdsver	8.4.5	Processing system revision	ontime	8463.9999684691	Sum of GTIs [s]
caldbver	4.5.2	 	ontime0	3509.5115244389	Sum of GTIs [s]
date	2012-10-05T03:10:39	Date and time of file creation	ontime1	3658.6394277811	Sum of GTIs [s]
revision	3	Processing version of data	ontime2	3386.4341843724	Sum of GTIs [s]
			ontime3	3446.964076221	Sum of GTIs [s]
			ontime6	3762.433024019	Sum of GTIs [s]
			ontime7	8463.9999684691	Sum of GTIs [s]
			l1events	1561381	Number of level 1 events

2.1.4 Events

	ccd 0	ccd 1	ccd 2	ccd 3	ccd 6	ccd 7		ccd 0	ccd 1	ccd 2	ccd 3	ccd 6	ccd 7
level 1 events	205785	213696	202364	206203	231862	501471	grade 0 events	99814	103456	98291	100374	111282	115438
rejected events	25246	25283	25466	25749	27960	45467		48%	48%	48%	48%	47%	23%
rejected %	12%	11%	12%	12%	12%	9%	grade 1 events	529	532	513	488	553	315
								0%	0%	0%	0%	0%	0%
							grade 2 events	31675	33596	31224	31858	35199	100410
								15%	15%	15%	15%	15%	20%
							grade 3 events	11438	12084	11067	11353	12664	46675
								5%	5%	5%	5%	5%	9%
							grade 4 events	11393	12082	11122	11504	12529	45737
								5%	5%	5%	5%	5%	9%
							grade 5 events	1765	1805	1625	1821	2135	9163
								0%	0%	0%	0%	0%	1%
							grade 6 events	26219	27195	25194	25365	32228	147744
								12%	12%	12%	12%	13%	29%
							grade 7 events	22952	22946	23328	23440	25272	35989
								11%	10%	11%	11%	10%	7%

2.2 Compared Parameters

Parameter	Planned	Actual	Parameter	Planned	Actual
Instrument	ACIS	ACIS	Obspar format version number	7	7
Detector	ACIS-012367	ACIS-012367	Obspar file type	PREDICTED	ACTUAL
Grating	NONE	NONE	Obspar update status	NONE	UPDATED
Data mode	FAINT	FAINT	On-chip summing requested	N	N
Observation mode	SECONDARY	SECONDARY	Subarray requested	NONE	NONE
[deg] Pointing RA	0	251.731506196061	Alternating exposures requested	N	N
[deg] Pointing Dec	0	-3.478140614124174	[s] Primary exposure time	0.000000	3.2
[deg] Pointing Roll	0.0	97.38976994312289			
[mm] SIM focus pos	-0.782348	-0.6828225247311905			
[mm] SIM defocus	0	0.8505141146731063			
[mm] SIM translation stage pos	-233.592463	250.466033080201			
[mm] SIM translation stage offset	0	-0.01005468664627074			
[s] Observation start time (MET)	134819059.996	134819058.97123			
Observation start date	2002-04-10T09:44:20	2002-04-10T09:44:18			
[s] Observation end time (MET)	134842331.597	134842330.57218			
Observation end date	2002-04-10T16:12:12	2002-04-10T16:12:10			
Read mode	TIMED	TIMED			

2.3 Star Slots

2.4 FID Slots

A Summary

A.1 Status

V&V Scientist	Beth Sundheim
V&V Date (YYYY-MM-DD)	2012.10.10
V&V Edition	1
V&V Disposition and Status	OK
V&V Charge Time	8.4639999684691

A.2 Comments