

V&V Reference Report

L2 ASCDS Version : 8.4.5

Observation 61216 - L2 Version 3
Chandra X-Ray Center

L2 Processing Date : Oct 7 2012

Contents

1	Front	2
2	OBI	3
2.1	OBI	3
2.1.1	Images	3
2.1.2	Bias	3
2.1.3	Parameters	4
2.1.4	Events	4
2.2	Compared Parameters	5
2.3	Star Slots	6
2.4	FID Slots	6
A	Summary	7
A.1	Status	7
A.2	Comments	7

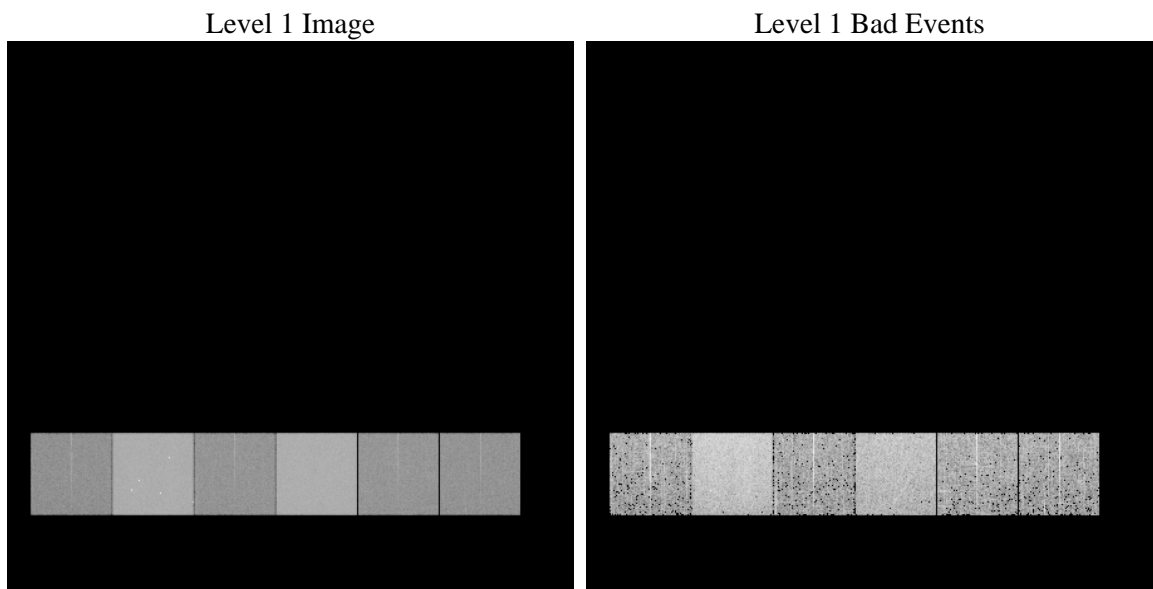
1 Front

seq_num	 	Sequence number
obs_id	61216	Observation id
title	ACIS-456789 diagnostics	Proposal title
observer	CHANDRA engineering request/realtime commanding	Principal investig
object	 	Source name
dtcycle	0	
cycle	P	events from which exps? Prim/Second/Both
ra_targ	0.0	Observer's specified target RA [deg]
dec_targ	0.0	Observer's specified target Dec [deg]
ra_nom	200.02022509978	Nominal RA [deg]
dec_nom	-20.021411171282	Nominal Dec [deg]
roll_nom	278.73384332294	Nominal Roll [deg]
revision	3	Processing version of data
ontime	6861.8848635852	Sum of GTIs [s]
livetime	6774.9955457115	Livetime [s]
ontime4	2504.5472978055	Sum of GTIs [s]
ontime5	7357.7520547211	Sum of GTIs [s]
ontime6	2715.1735185385	Sum of GTIs [s]
ontime7	6861.8848635852	Sum of GTIs [s]
ontime8	2776.83496961	Sum of GTIs [s]
ontime9	2672.9169782698	Sum of GTIs [s]
l2events	1215524	Number of level 2 events

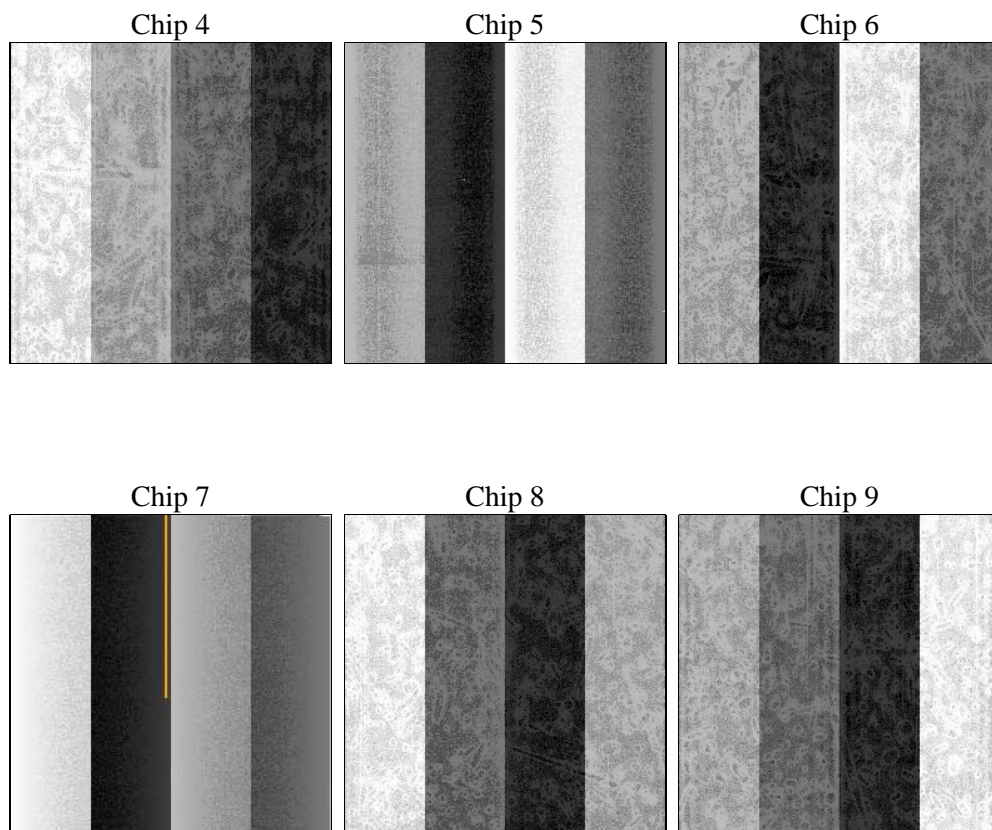
2 OBI

2.1 OBI

2.1.1 Images



2.1.2 Bias



2.1.3 Parameters

obi_num	0	Obi number	sched_exp_time	0.0	[s] Scheduled observation exposure time
ascdsver	8.4.5	Processing system revision	ontime	6861.8848635852	Sum of GTIs [s]
caldsver	4.5.2	 	ontime4	2504.5472978055	Sum of GTIs [s]
date	2012-10-07T12:06:19	Date and time of file creation	ontime5	7357.7520547211	Sum of GTIs [s]
revision	3	Processing version of data	ontime6	2715.1735185385	Sum of GTIs [s]
			ontime7	6861.8848635852	Sum of GTIs [s]
			ontime8	2776.83496961	Sum of GTIs [s]
			ontime9	2672.9169782698	Sum of GTIs [s]
			l1events	1447067	Number of level 1 events

2.1.4 Events

	ccd 4	ccd 5	ccd 6	ccd 7	ccd 8	ccd 9		ccd 4	ccd 5	ccd 6	ccd 7	ccd 8	ccd 9
level 1 events	145432	399214	166677	405337	172581	157826	grade 0 events	69808	86083	79650	92903	82035	75500
rejected events	21528	51981	20854	38025	23279	20837		48%	21%	47%	22%	47%	47%
rejected %	14%	13%	12%	9%	13%	13%	grade 1 events	384	286	352	258	413	364
								0%	0%	0%	0%	0%	0%
							grade 2 events	22040	121835	25233	81565	26300	23950
								15%	30%	15%	20%	15%	15%
							grade 3 events	7552	22430	9028	37504	9470	8339
								5%	5%	5%	9%	5%	5%
							grade 4 events	7639	22050	9027	37036	9430	8477
								5%	5%	5%	9%	5%	5%
							grade 5 events	1247	9222	1538	7407	1708	1507
								0%	2%	0%	1%	0%	0%
							grade 6 events	16865	94963	22885	118464	22067	20723
								11%	23%	13%	29%	12%	13%
							grade 7 events	19897	42345	18964	30200	21158	18966
								13%	10%	11%	7%	12%	12%

2.2 Compared Parameters

Parameter	Planned	Actual	Parameter	Planned	Actual
Instrument	ACIS	ACIS	Obspar format version number	7	7
Detector	ACIS-456789	ACIS-456789	Obspar file type	PREDICTED	ACTUAL
Grating	NONE	NONE	Obspar update status	NONE	UPDATED
Data mode	FAINT	FAINT	On-chip summing requested	N	N
Observation mode	SECONDARY	SECONDARY	Subarray requested	NONE	NONE
[deg] Pointing RA	0	200.0202250997845	Alternating exposures requested	N	N
[deg] Pointing Dec	0	-20.02141117128177	[s] Primary exposure time	3.2	3.2
[deg] Pointing Roll	0.0	278.7338433229443			
[mm] SIM focus pos	-0.684267	-0.7809083437167272			
[mm] SIM defocus	0	0.7524282956875696			
[mm] SIM translation stage pos	-190.132523	250.466033080201			
[mm] SIM translation stage offset	0	-0.01005468664627074			
[s] Observation start time (MET)	136843793.828386	136843792.80366			
Observation start date	2002-05-03T20:09:54	2002-05-03T20:09:52			
[s] Observation end time (MET)	136867038.779335	136867037.7546			
Observation end date	2002-05-04T02:37:19	2002-05-04T02:37:17			
Read mode	TIMED	TIMED			

2.3 Star Slots

2.4 FID Slots

A Summary

A.1 Status

V&V Scientist	Beth Sundheim
V&V Date (YYYY-MM-DD)	2012.10.11
V&V Edition	1
V&V Disposition and Status	OK
V&V Charge Time	6.8618848635852

A.2 Comments