

# V&V Reference Report

## L2 ASCDS Version : 7.6.9

Observation 61106 - L2 Version 001  
Chandra X-Ray Center

L2 Processing Date : Sep 26 2006

## Contents

<b>1</b>	<b>Front</b>	<b>2</b>
<b>2</b>	<b>OBI</b>	<b>3</b>
2.1	OBI . . . . .	3
2.1.1	Images . . . . .	3
2.1.2	Bias . . . . .	3
2.1.3	Parameters . . . . .	4
2.1.4	Events . . . . .	4
2.2	Compared Parameters . . . . .	5
2.3	Aspect . . . . .	6
2.4	Star Slots . . . . .	8
2.5	FID Slots . . . . .	8
<b>A</b>	<b>Summary</b>	<b>9</b>
A.1	Status . . . . .	9
A.2	Comments . . . . .	9

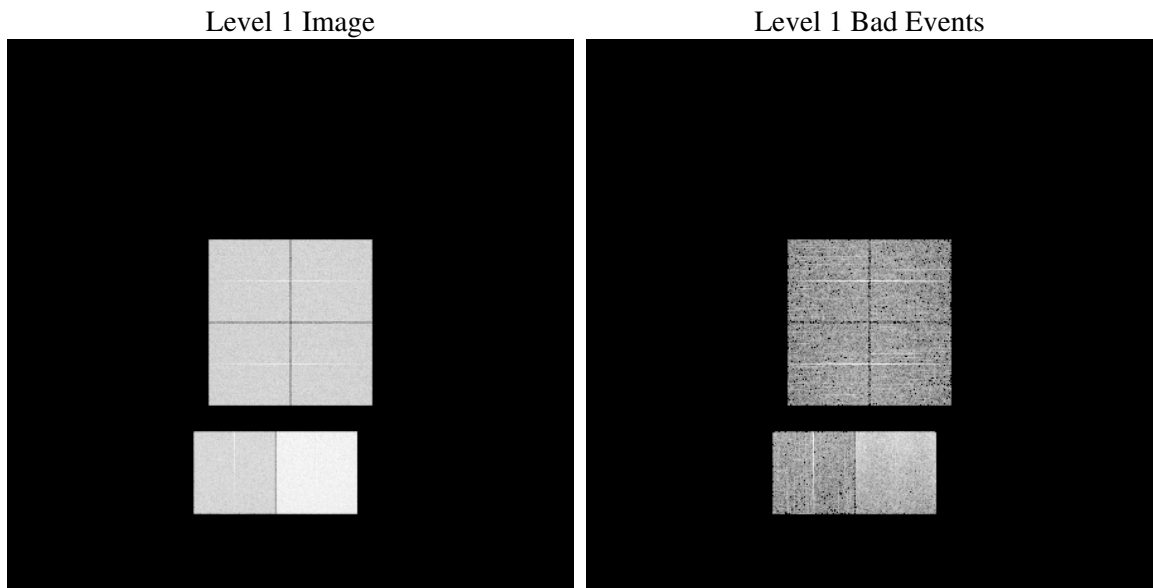
# 1 Front

seq_num	&#160
obs_id	61106
title	ACIS-012367 diagnostics
observer	CHANDRA engineering request/realtime commanding
object	&#160
dtcycle	0
cycle	P
ra_targ	0.0
dec_targ	0.0
ra_nom	353.97428567632
dec_nom	7.0129879178834
roll_nom	120.22678020576
revision	2
ontime	7793.2588334084
livetime	7694.5758975226
ontime0	3479.5620022714
ontime1	3546.281784296
ontime2	3419.8829877079
ontime3	3414.659730345
ontime6	3690.350390017
ontime7	7793.2588334084
l2events	1211730

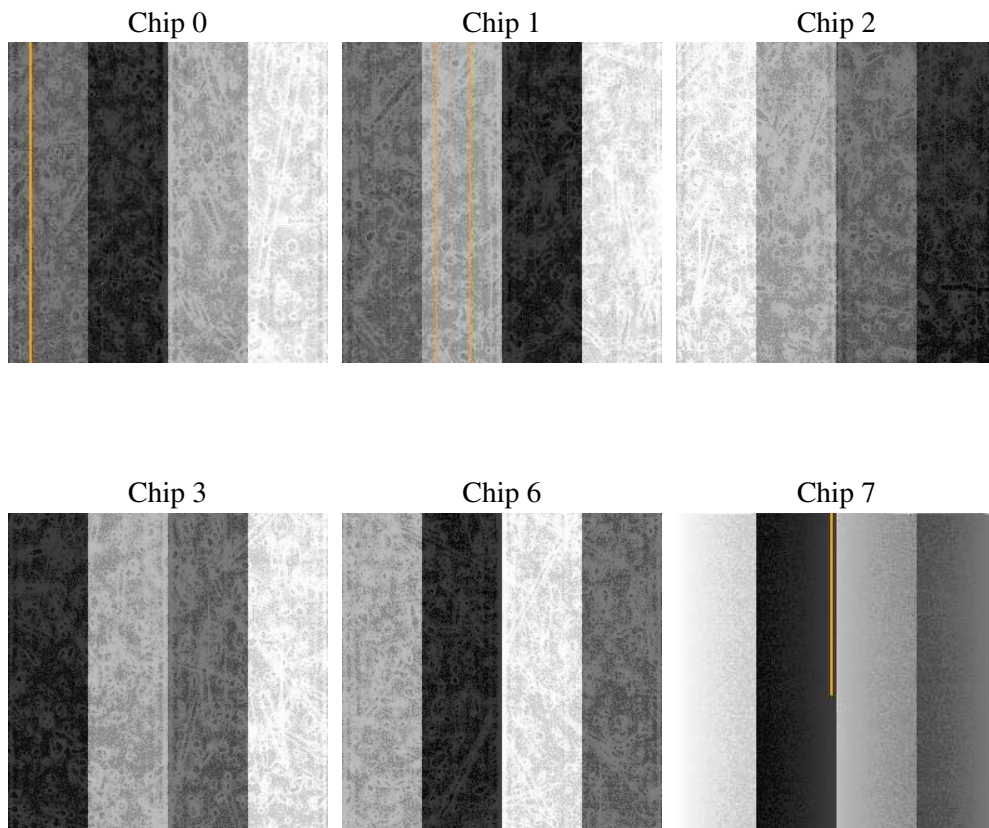
## 2 OBI

### 2.1 OBI

#### 2.1.1 Images



#### 2.1.2 Bias



### 2.1.3 Parameters

obi_num	0
ascdsver	7.6.9
caldbver	3.2.3
date	2006-09-26T21:33:02
revision	2

sched_exp_time	0.0
ontime	7794.6068603396
ontime0	3480.8689891994
ontime1	3548.929663837
ontime2	3422.5308672488
ontime3	3416.0487972796
ontime6	3691.5342569649
ontime7	7794.6068603396
l1events	1437179

### 2.1.4 Events

	ccd 0	ccd 1	ccd 2	ccd 3	ccd 6	ccd 7
level 1 events	193950	197466	194077	194685	217528	439473
rejected events	23150	22733	23879	24245	25703	52676
rejected %	11%	11%	12%	12%	11%	11%

	ccd 0	ccd 1	ccd 2	ccd 3	ccd 6	ccd 7
grade 0 events	93727	95656	94501	95003	104154	72336
	48%	48%	48%	48%	47%	16%
grade 1 events	471	457	437	469	477	168
	0%	0%	0%	0%	0%	0%
grade 2 events	30148	31010	29780	29844	33433	115882
	15%	15%	15%	15%	15%	26%
grade 3 events	10911	10999	10755	10725	11648	29105
	5%	5%	5%	5%	5%	6%
grade 4 events	10862	10996	10636	10727	11818	28680
	5%	5%	5%	5%	5%	6%
grade 5 events	1654	1744	1621	1639	1917	6928
	0%	0%	0%	0%	0%	1%
grade 6 events	25152	26072	24526	24141	30772	140794
	12%	13%	12%	12%	14%	32%
grade 7 events	21025	20532	21821	22137	23309	45580
	10%	10%	11%	11%	10%	10%

## 2.2 Compared Parameters

Parameter	Planned	Actual	Parameter	Planned	Actual
Instrument	ACIS	ACIS	Obspar format version number	6	6
Detector	ACIS-012367	ACIS-012367	Obspar file type	PREDICTED	ACTUAL
Grating	NONE	NONE	Obspar update status	NONE	UPDATED
Data mode	FAINT	FAINT	On-chip summing requested	N	N
Observation mode	SECONDARY	SECONDARY	Subarray requested	NONE	NONE
Pointing RA	0	353.9742856763227	Alternating exposures requested	N	N
Pointing Dec	0	7.012987917883375	Primary exposure time	0.000000	3.2
Pointing Roll	0.0	120.2267802057568			
SIM focus pos (mm)	-0.782348	-0.6828225247311905			
SIM defocus (mm)	0	0.8505141146731063			
SIM translation stage pos (mm)	-233.592463	250.466033080201			
SIM translation stage offset (mm)	0	-0.01005468664627074			
Observation start time	144155432.778	144155431.75287			
Observation start date	2002-07-27T11:10:33	2002-07-27T11:10:31			
Observation end time	144185383.279	144185382.25411			
Observation end date	2002-07-27T19:29:43	2002-07-27T19:29:42			
Read mode	TIMED	TIMED			

## 2.3 Aspect



## **2.4 Star Slots**

## **2.5 FID Slots**



## A Summary

### A.1 Status

V&V Scientist	Jen Lauer
V&V Date (YYYY-MM-DD)	2006.09.27
V&V Edition	1
V&V Disposition and Status	OK
V&V Charge Time	7.79325883

### A.2 Comments