

V&V Reference Report

L2 ASCDS Version : 7.6.9

Observation 61036 - L2 Version 001
Chandra X-Ray Center

L2 Processing Date : Oct 4 2006

Contents

1	Front	2
2	OBI	3
2.1	OBI	3
2.1.1	Images	3
2.1.2	Bias	3
2.1.3	Parameters	4
2.1.4	Events	4
2.2	Compared Parameters	5
2.3	Aspect	6
2.4	Star Slots	8
2.5	FID Slots	8
A	Summary	9
A.1	Status	9
A.2	Comments	9

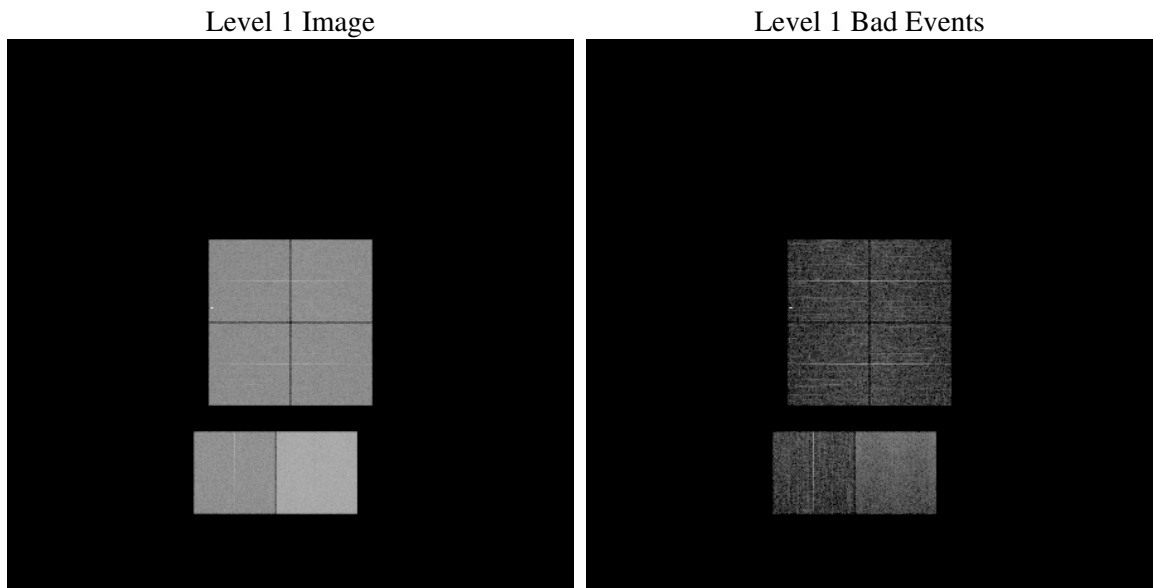
1 Front

seq_num	
obs_id	61036
title	ACIS-012367 diagnostics
observer	CHANDRA engineering request/realtime commanding
object	
dtcycle	0
cycle	P
ra_targ	0.0
dec_targ	0.0
ra_nom	282.08413842874
dec_nom	-2.4448423366525
roll_nom	266.76316530793
revision	2
ontime	7795.1999709606
livetime	7696.4924552224
ontime0	3565.7278892398
ontime1	3831.4901599288
ontime2	3569.9716356099
ontime3	3601.3785223067
ontime6	3903.8349822462
ontime7	7795.1999709606
l2events	1201029

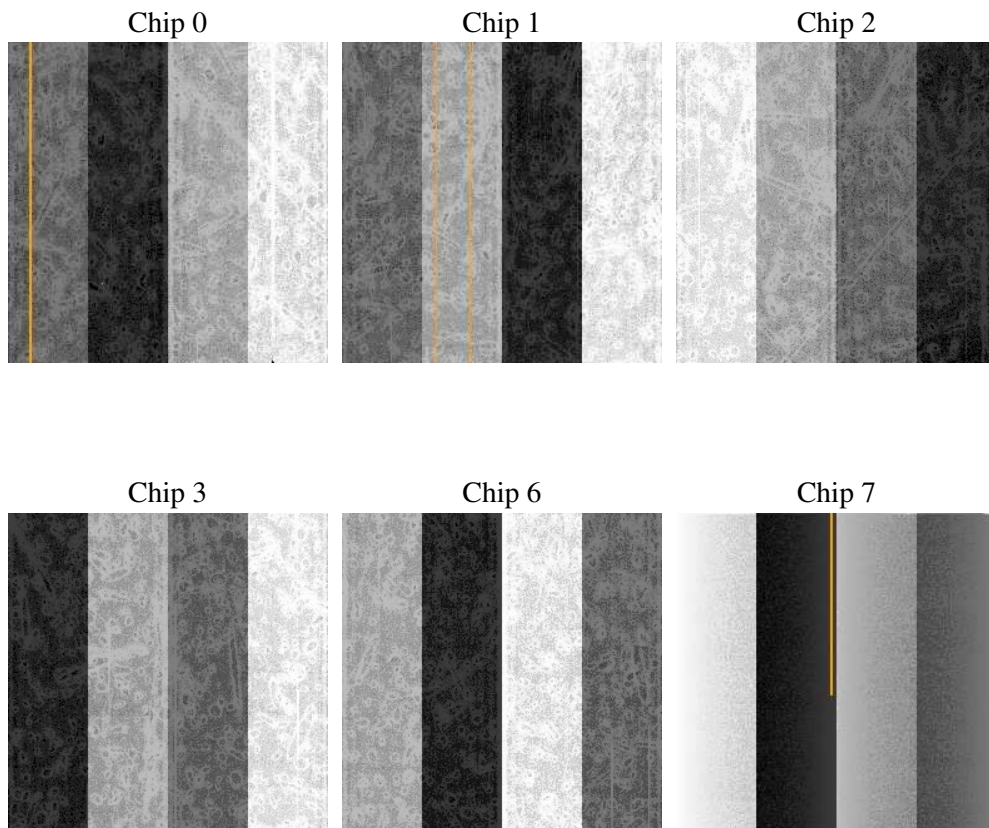
2 OBI

2.1 OBI

2.1.1 Images



2.1.2 Bias



2.1.3 Parameters

obi_num	1
ascdsver	7.6.9
caldsver	3.2.3
date	2006-10-04T18:46:42
revision	2

sched_exp_time	0.0
ontime	7797.8490320146
ontime0	3568.3769502938
ontime1	3834.1392209828
ontime2	3571.6176117063
ontime3	3604.0275833607
ontime6	3905.4399183691
ontime7	7797.8490320146
l1events	1435302

2.1.4 Events

	ccd 0	ccd 1	ccd 2	ccd 3	ccd 6	ccd 7
level 1 events	193602	204550	195062	197660	219717	424711
rejected events	26361	24500	24703	25615	26492	53803
rejected %	13%	11%	12%	12%	12%	12%

	ccd 0	ccd 1	ccd 2	ccd 3	ccd 6	ccd 7
grade 0 events	92480	98789	95544	96787	105424	68218
	47%	48%	48%	48%	47%	16%
grade 1 events	537	456	559	557	551	168
	0%	0%	0%	0%	0%	0%
grade 2 events	29068	31871	28915	29349	33099	111565
	15%	15%	14%	14%	15%	26%
grade 3 events	10911	11571	11112	11131	11851	27870
	5%	5%	5%	5%	5%	6%
grade 4 events	10543	11311	10838	11249	11844	27299
	5%	5%	5%	5%	5%	6%
grade 5 events	1668	1755	1605	1765	1935	7081
	0%	0%	0%	0%	0%	1%
grade 6 events	24402	26640	24105	23677	31007	136109
	12%	13%	12%	11%	14%	32%
grade 7 events	23993	22157	22384	23145	24006	46401
	12%	10%	11%	11%	10%	10%

2.2 Compared Parameters

Parameter	Planned	Actual	Parameter	Planned	Actual
Instrument	ACIS	ACIS	Obspar format version number	6	6
Detector	ACIS-012367	ACIS-012367	Obspar file type	PREDICTED	ACTUAL
Grating	NONE	NONE	Obspar update status	NONE	UPDATED
Data mode	FAINT	FAINT	On-chip summing requested	N	N
Observation mode	SECONDARY	SECONDARY	Subarray requested	NONE	NONE
Pointing RA	0	282.084138428737	Alternating exposures requested	N	N
Pointing Dec	0	-2.444842336652497	Primary exposure time	3.2	3.2
Pointing Roll	0.0	266.7631653079335			
SIM focus pos (mm)	-0.782348	-0.6828225247311905			
SIM defocus (mm)	0	0.8505141146731063			
SIM translation stage pos (mm)	-233.592463	250.466033080201			
SIM translation stage offset (mm)	0	-0.01005468664627074			
Observation start time	148261607.546844	148261606.52212			
Observation start date	2002-09-12T23:46:48	2002-09-12T23:46:46			
Observation end time	148271217.947241	148271216.92252			
Observation end date	2002-09-13T02:26:58	2002-09-13T02:26:56			
Read mode	TIMED	TIMED			

2.3 Aspect

2.4 Star Slots

2.5 FID Slots

A Summary

A.1 Status

V&V Scientist	Jen Lauer
V&V Date (YYYY-MM-DD)	2006.10.05
V&V Edition	1
V&V Disposition and Status	OK
V&V Charge Time	7.79519997

A.2 Comments