

V&V Reference Report

L2 ASCDS Version : 7.6.9

Observation 60956 - L2 Version 001
Chandra X-Ray Center

L2 Processing Date : Oct 9 2006

Contents

1	Front	2
2	OBI	3
2.1	OBI	3
2.1.1	Images	3
2.1.2	Bias	3
2.1.3	Parameters	4
2.1.4	Events	4
2.2	Compared Parameters	5
2.3	Aspect	6
2.4	Star Slots	8
2.5	FID Slots	8
A	Summary	9
A.1	Status	9
A.2	Comments	9

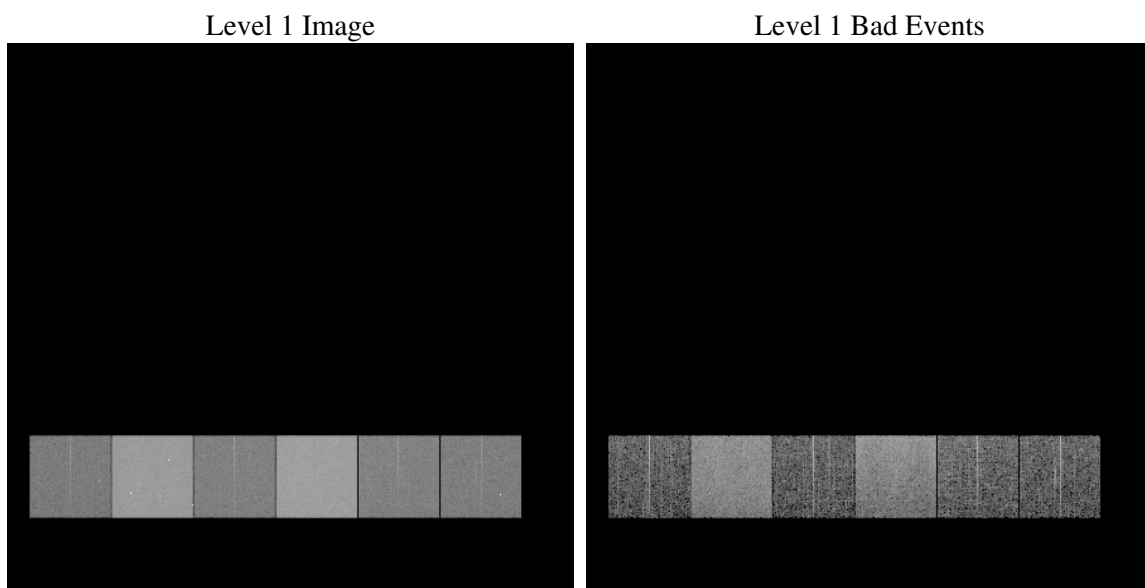
1 Front

seq_num	
obs_id	60956
title	ACIS-456789 diagnostics
observer	CHANDRA engineering request/realtime commanding
object	
dtcycle	0
cycle	P
ra_targ	0.0
dec_targ	0.0
ra_nom	1.4250045616143
dec_nom	-6.114126777726
roll_nom	297.59864507201
revision	2
ontime	8364.7999688387
livetime	8258.8798349554
ontime4	3231.0841104686
ontime5	8364.7999688387
ontime6	3503.329557091
ontime7	8364.7999688387
ontime8	3524.6849304736
ontime9	3386.652924329
l2events	1262628

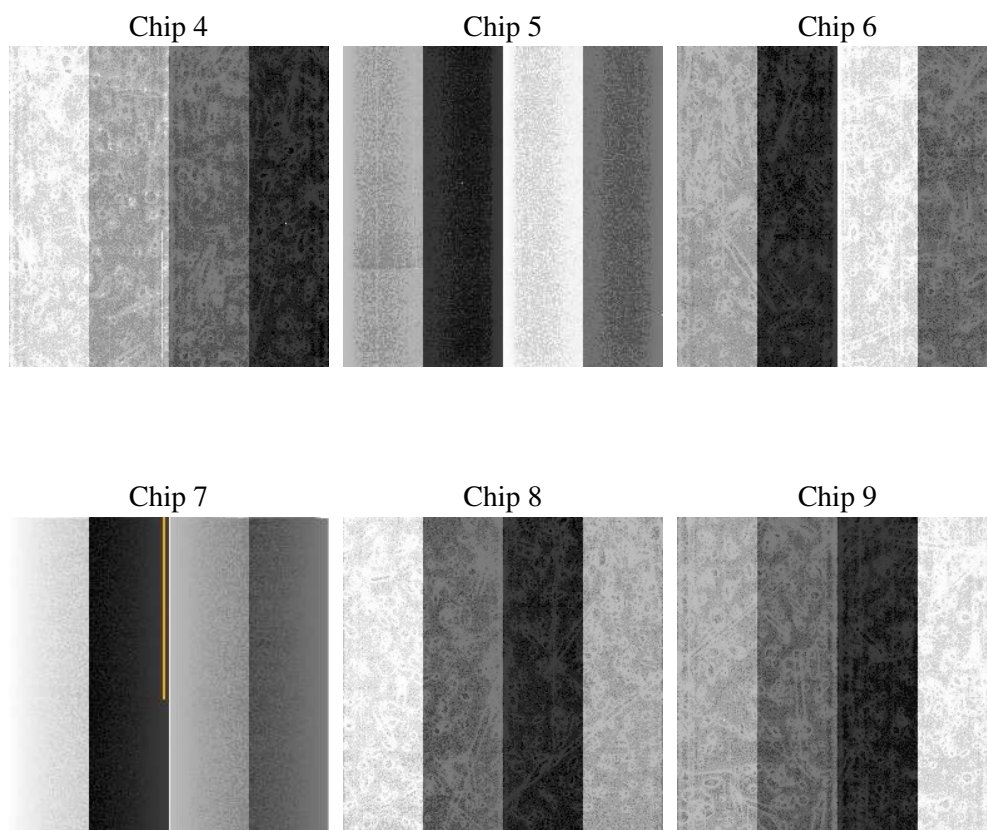
2 OBI

2.1 OBI

2.1.1 Images



2.1.2 Bias



2.1.3 Parameters

obi_num	0
ascdsver	7.6.9
caldsver	3.2.3
date	2006-10-09T19:37:50
revision	2

sched_exp_time	0.0
ontime	8433.0889607966
ontime4	3260.4813297093
ontime5	8433.0889607966
ontime6	3526.2446963489
ontime7	8433.0889607966
ontime8	3548.9319165349
ontime9	3416.0501435697
l1events	1541511

2.1.4 Events

	ccd 4	ccd 5	ccd 6	ccd 7	ccd 8	ccd 9
level 1 events	163629	391631	187612	430836	191932	175871
rejected events	23605	63836	24237	57287	26979	23303
rejected %	14%	16%	12%	13%	14%	13%

	ccd 4	ccd 5	ccd 6	ccd 7	ccd 8	ccd 9
grade 0 events	81934	39322	90011	69194	91792	85986
	50%	10%	47%	16%	47%	48%
grade 1 events	583	142	402	168	452	438
	0%	0%	0%	0%	0%	0%
grade 2 events	22826	159231	28516	113941	28901	26170
	13%	40%	15%	26%	15%	14%
grade 3 events	9400	10706	10247	28275	10660	9593
	5%	2%	5%	6%	5%	5%
grade 4 events	9435	10451	10075	27666	10471	9739
	5%	2%	5%	6%	5%	5%
grade 5 events	1466	6897	1640	7258	1892	1669
	0%	1%	0%	1%	0%	0%
grade 6 events	17703	110809	25751	137622	24247	22510
	10%	28%	13%	31%	12%	12%
grade 7 events	20282	54073	20970	46712	23517	19766
	12%	13%	11%	10%	12%	11%

2.2 Compared Parameters

Parameter	Planned	Actual	Parameter	Planned	Actual
Instrument	ACIS	ACIS	Obspar format version number	6	6
Detector	ACIS-456789	ACIS-456789	Obspar file type	PREDICTED	ACTUAL
Grating	NONE	NONE	Obspar update status	NONE	UPDATED
Data mode	FAINT	FAINT	On-chip summing requested	N	N
Observation mode	SECONDARY	SECONDARY	Subarray requested	NONE	NONE
Pointing RA	0	1.425004561614282	Alternating exposures requested	N	N
Pointing Dec	0	-6.114126777726011	Primary exposure time	3.2	3.2
Pointing Roll	0.0	297.5986450720085			
SIM focus pos (mm)	-0.684267	-0.6828225247311905			
SIM defocus (mm)	0	0.8505141146731063			
SIM translation stage pos (mm)	-190.132523	250.466033080201			
SIM translation stage offset (mm)	0	-0.01005468664627074			
Observation start time	154007977.135235	154007976.11051			
Observation start date	2002-11-18T11:59:37	2002-11-18T11:59:36			
Observation end time	154031654.63622	154031653.6115			
Observation end date	2002-11-18T18:34:15	2002-11-18T18:34:13			
Read mode	TIMED	TIMED			

2.3 Aspect

2.4 Star Slots

2.5 FID Slots

A Summary

A.1 Status

V&V Scientist	Jen Lauer
V&V Date (YYYY-MM-DD)	2006.10.10
V&V Edition	1
V&V Disposition and Status	OK
V&V Charge Time	8.36479996

A.2 Comments