

V&V Reference Report

L2 ASCDS Version : 8.4.5

Observation 60896 - L2 Version 3
Chandra X-Ray Center

L2 Processing Date : Oct 20 2012

Contents

1	Front	2
2	OBI	3
2.1	OBI	3
2.1.1	Images	3
2.1.2	Bias	3
2.1.3	Parameters	4
2.1.4	Events	4
2.2	Compared Parameters	5
2.3	Star Slots	6
2.4	FID Slots	6
A	Summary	7
A.1	Status	7
A.2	Comments	7

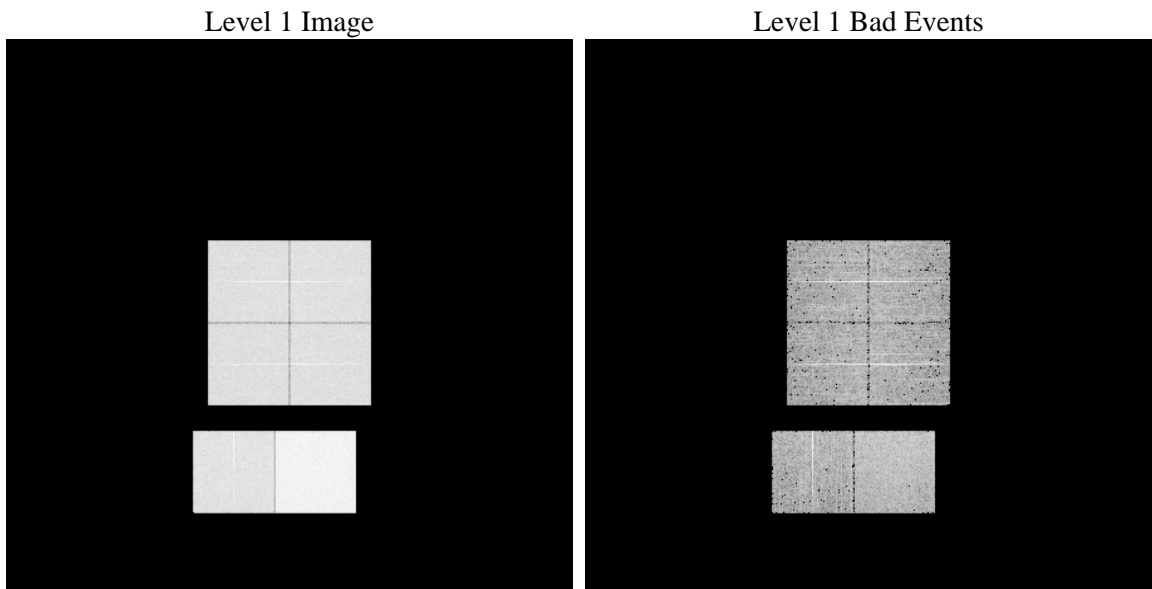
1 Front

seq_num	 	Sequence number
obs_id	60896	Observation id
title	ACIS-012367 diagnostics	Proposal title
observer	CHANDRA engineering request/realtime commanding	Principal investig
object	 	Source name
dtcycle	0	
cycle	P	events from which exps? Prim/Second/Both
ra_targ	0.0	Observer's specified target RA [deg]
dec_targ	0.0	Observer's specified target Dec [deg]
ra_nom	81.924222863866	Nominal RA [deg]
dec_nom	15.583453935539	Nominal Dec [deg]
roll_nom	291.72615713498	Nominal Roll [deg]
revision	3	Processing version of data
ontime	7794.8516830504	Sum of GTIs [s]
livetime	7696.1485775434	Livetime [s]
ontime0	4090.3653149605	Sum of GTIs [s]
ontime1	4200.3742803037	Sum of GTIs [s]
ontime2	3934.6115994155	Sum of GTIs [s]
ontime3	3996.4586687982	Sum of GTIs [s]
ontime6	4385.1738087237	Sum of GTIs [s]
ontime7	7794.8516830504	Sum of GTIs [s]
l2events	1190049	Number of level 2 events

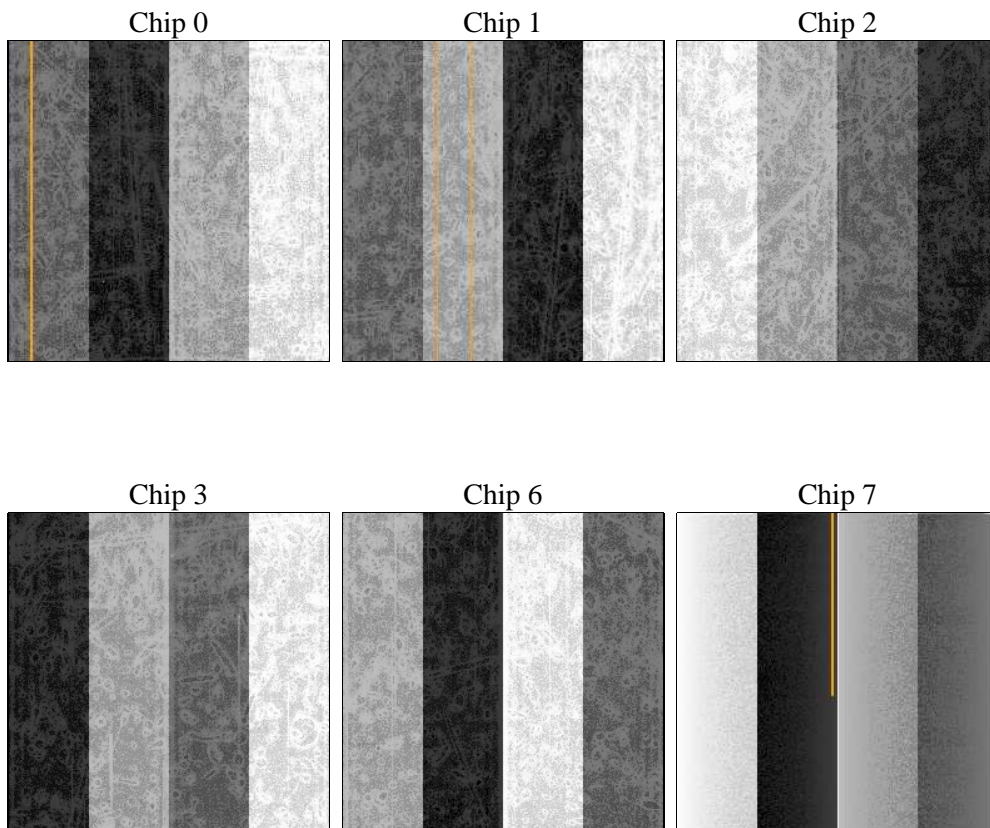
2 OBI

2.1 OBI

2.1.1 Images



2.1.2 Bias



2.1.3 Parameters

obi_num	1	Obi number	sched_exp_time	0.0	[s] Scheduled observation exposure time
ascdsver	8.4.5	Processing system revision	ontime	7794.8516830504	Sum of GTIs [s]
caldsver	4.5.2	 	ontime0	4090.3653149605	Sum of GTIs [s]
date	2012-10-20T13:43:49	Date and time of file creation	ontime1	4200.3742803037	Sum of GTIs [s]
revision	3	Processing version of data	ontime2	3934.6115994155	Sum of GTIs [s]
			ontime3	3996.4586687982	Sum of GTIs [s]
			ontime6	4385.1738087237	Sum of GTIs [s]
			ontime7	7794.8516830504	Sum of GTIs [s]
			l1events	1427813	Number of level 1 events

2.1.4 Events

	ccd 0	ccd 1	ccd 2	ccd 3	ccd 6	ccd 7		ccd 0	ccd 1	ccd 2	ccd 3	ccd 6	ccd 7
level 1 events	203403	208317	197332	201652	226101	391008	grade 0 events	97040	99332	95560	98137	107138	86757
rejected events	28294	28690	27510	28041	29973	41445		47%	47%	48%	48%	47%	22%
rejected %	13%	13%	13%	13%	13%	10%	grade 1 events	529	464	540	538	491	275
								0%	0%	0%	0%	0%	0%
							grade 2 events	30752	31641	28643	29581	33742	77130
								15%	15%	14%	14%	14%	19%
							grade 3 events	11200	11329	11175	11395	12110	34872
								5%	5%	5%	5%	5%	8%
							grade 4 events	11187	11482	10954	11089	12070	34552
								5%	5%	5%	5%	5%	8%
							grade 5 events	1909	1944	1801	1904	2151	8004
								0%	0%	0%	0%	0%	2%
							grade 6 events	25065	25843	23490	23558	31200	116381
								12%	12%	11%	11%	13%	29%
							grade 7 events	25721	26282	25169	25450	27199	33037
								12%	12%	12%	12%	12%	8%

2.2 Compared Parameters

Parameter	Planned	Actual	Parameter	Planned	Actual
Instrument	ACIS	ACIS	Obspar format version number	7	7
Detector	ACIS-012367	ACIS-012367	Obspar file type	PREDICTED	ACTUAL
Grating	NONE	NONE	Obspar update status	NONE	UPDATED
Data mode	FAINT	FAINT	On-chip summing requested	N	N
Observation mode	SECONDARY	SECONDARY	Subarray requested	NONE	NONE
[deg] Pointing RA	0	81.92422286386577	Alternating exposures requested	N	N
[deg] Pointing Dec	0	15.58345393553916	[s] Primary exposure time	3.2	3.2
[deg] Pointing Roll	0.0	291.7261571349812			
[mm] SIM focus pos	-0.782348	-0.7809083437167272			
[mm] SIM defocus	0	0.7524282956875696			
[mm] SIM translation stage pos	-233.592463	250.466033080201			
[mm] SIM translation stage offset	0	-0.01005468664627074			
[s] Observation start time (MET)	158085671.255344	158085670.23063			
Observation start date	2003-01-04T16:41:11	2003-01-04T16:41:10			
[s] Observation end time (MET)	158095482.555754	158095481.53104			
Observation end date	2003-01-04T19:24:43	2003-01-04T19:24:41			
Read mode	TIMED	TIMED			

2.3 Star Slots

2.4 FID Slots

A Summary

A.1 Status

V&V Scientist	Beth Sundheim
V&V Date (YYYY-MM-DD)	2012.11.26
V&V Edition	1
V&V Disposition and Status	OK
V&V Charge Time	7.7948516830504

A.2 Comments