

V&V Reference Report

L2 ASCDS Version : 8.4.5

Observation 60836 - L2 Version 3
Chandra X-Ray Center

L2 Processing Date : Oct 23 2012

Contents

1	Front	2
2	OBI	3
2.1	OBI	3
2.1.1	Images	3
2.1.2	Bias	3
2.1.3	Parameters	4
2.1.4	Events	4
2.2	Compared Parameters	5
2.3	Star Slots	6
2.4	FID Slots	6
A	Summary	7
A.1	Status	7
A.2	Comments	7

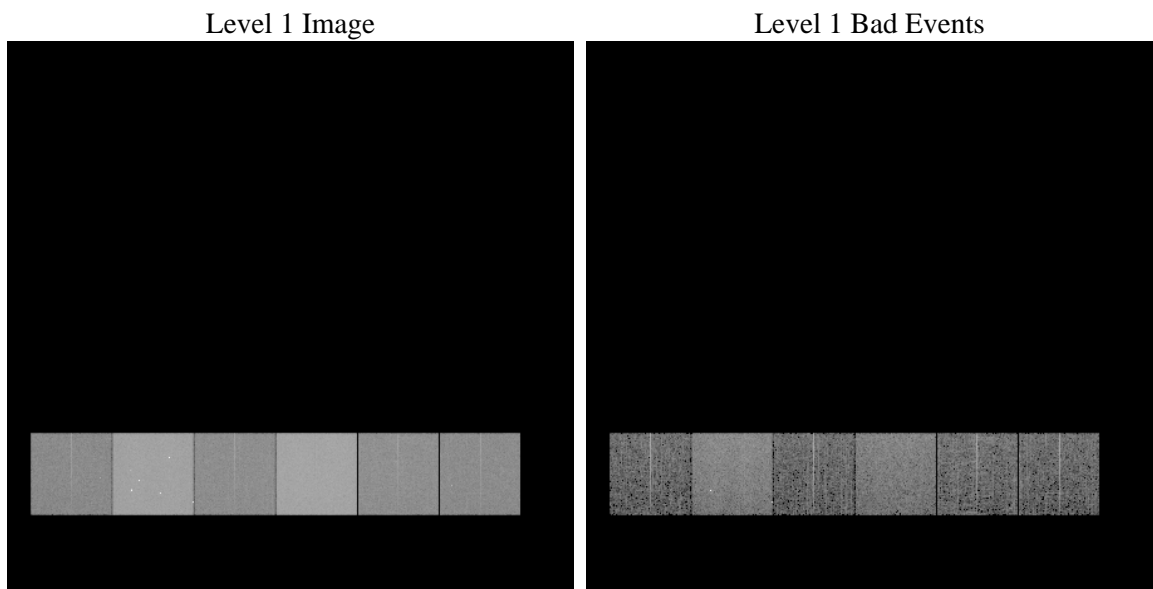
1 Front

seq_num	 	Sequence number
obs_id	60836	Observation id
title	ACIS-456789 diagnostics	Proposal title
observer	CHANDRA engineering request/realtime commanding	Principal investig
object	 	Source name
dtcycle	0	
cycle	P	events from which exps? Prim/Second/Both
ra_targ	0.0	Observer's specified target RA [deg]
dec_targ	0.0	Observer's specified target Dec [deg]
ra_nom	99.017830942996	Nominal RA [deg]
dec_nom	10.377377803225	Nominal Dec [deg]
roll_nom	274.92063104535	Nominal Roll [deg]
revision	3	Processing version of data
ontime	7791.9999709725	Sum of GTIs [s]
livetime	7693.332975561	Livetime [s]
ontime4	3108.7770758271	Sum of GTIs [s]
ontime5	7791.9999709725	Sum of GTIs [s]
ontime6	3374.540533334	Sum of GTIs [s]
ontime7	7791.9999709725	Sum of GTIs [s]
ontime8	3473.0934706926	Sum of GTIs [s]
ontime9	3233.0523367822	Sum of GTIs [s]
l2events	1170729	Number of level 2 events

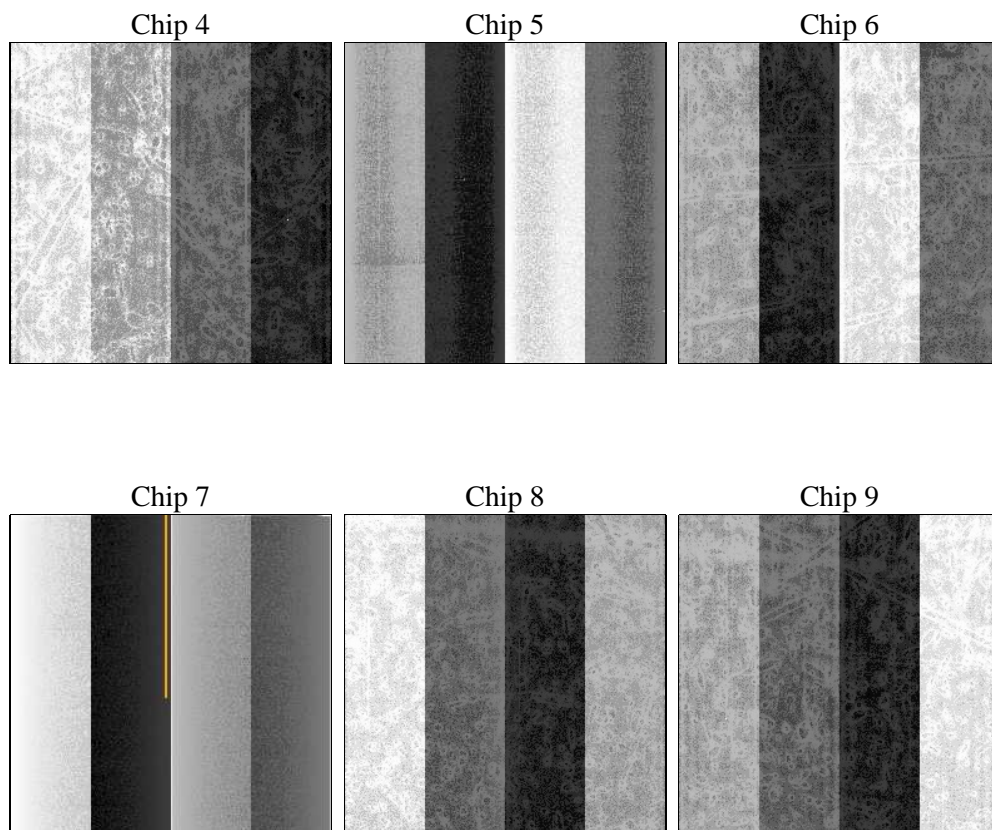
2 OBI

2.1 OBI

2.1.1 Images



2.1.2 Bias



2.1.3 Parameters

obi_num	0	Obi number	sched_exp_time	0.0	[s] Scheduled observation exposure time
ascdsver	8.4.5	Processing system revision	ontime	7791.9999709725	Sum of GTIs [s]
caldbver	4.5.2	 	ontime4	3108.7770758271	Sum of GTIs [s]
date	2012-10-23T08:47:32	Date and time of file creation	ontime5	7791.9999709725	Sum of GTIs [s]
revision	3	Processing version of data	ontime6	3374.540533334	Sum of GTIs [s]
			ontime7	7791.9999709725	Sum of GTIs [s]
			ontime8	3473.0934706926	Sum of GTIs [s]
			ontime9	3233.0523367822	Sum of GTIs [s]
			l1events	1425106	Number of level 1 events

2.1.4 Events

	ccd 4	ccd 5	ccd 6	ccd 7	ccd 8	ccd 9		ccd 4	ccd 5	ccd 6	ccd 7	ccd 8	ccd 9
level 1 events	151840	363448	174453	390107	183248	162010	grade 0 events	74137	73902	81652	87981	85706	76609
rejected events	23896	53638	24018	41092	27198	23737		48%	20%	46%	22%	46%	47%
rejected %	15%	14%	13%	10%	14%	14%	grade 1 events	530	425	422	210	437	419
								0%	0%	0%	0%	0%	0%
							grade 2 events	20220	112100	25856	76827	26913	23589
								13%	30%	14%	19%	14%	14%
							grade 3 events	8516	18627	9266	35171	10102	8696
								5%	5%	5%	9%	5%	5%
							grade 4 events	8488	18218	9195	34857	9804	8752
								5%	5%	5%	8%	5%	5%
							grade 5 events	1527	9566	1669	8026	1889	1664
								1%	2%	0%	2%	1%	1%
							grade 6 events	16583	86963	24466	114179	23525	20627
								10%	23%	14%	29%	12%	12%
							grade 7 events	21839	43647	21927	32856	24872	21654
								14%	12%	12%	8%	13%	13%

2.2 Compared Parameters

Parameter	Planned	Actual	Parameter	Planned	Actual
Instrument	ACIS	ACIS	Obspar format version number	7	7
Detector	ACIS-456789	ACIS-456789	Obspar file type	PREDICTED	ACTUAL
Grating	NONE	NONE	Obspar update status	NONE	UPDATED
Data mode	FAINT	FAINT	On-chip summing requested	N	N
Observation mode	SECONDARY	SECONDARY	Subarray requested	NONE	NONE
[deg] Pointing RA	0	99.01783094299577	Alternating exposures requested	N	N
[deg] Pointing Dec	0	10.37737780322513	[s] Primary exposure time	3.2	3.2
[deg] Pointing Roll	0.0	274.9206310453514			
[mm] SIM focus pos	-0.684267	-0.6828225247311905			
[mm] SIM defocus	0	0.8505141146731063			
[mm] SIM translation stage pos	-190.132523	250.466033080201			
[mm] SIM translation stage offset	0	-0.01005468664627074			
[s] Observation start time (MET)	162434186.787667	162434185.76297			
Observation start date	2003-02-24T00:36:27	2003-02-24T00:36:25			
[s] Observation end time (MET)	162445541.738144	162445540.71345			
Observation end date	2003-02-24T03:45:42	2003-02-24T03:45:40			
Read mode	TIMED	TIMED			

2.3 Star Slots

2.4 FID Slots

A Summary

A.1 Status

V&V Scientist	Beth Sundheim
V&V Date (YYYY-MM-DD)	2012.11.29
V&V Edition	1
V&V Disposition and Status	OK
V&V Charge Time	7.7919999709725

A.2 Comments