

# V&V Reference Report

## L2 ASCDS Version : 8.4.5

Observation 60816 - L2 Version 4  
Chandra X-Ray Center

L2 Processing Date : Oct 24 2012

## Contents

<b>1</b>	<b>Front</b>	<b>2</b>
<b>2</b>	<b>OBI</b>	<b>3</b>
2.1	OBI . . . . .	3
2.1.1	Images . . . . .	3
2.1.2	Bias . . . . .	3
2.1.3	Parameters . . . . .	4
2.1.4	Events . . . . .	4
2.2	Compared Parameters . . . . .	5
2.3	Star Slots . . . . .	6
2.4	FID Slots . . . . .	6
<b>A</b>	<b>Summary</b>	<b>7</b>
A.1	Status . . . . .	7
A.2	Comments . . . . .	7

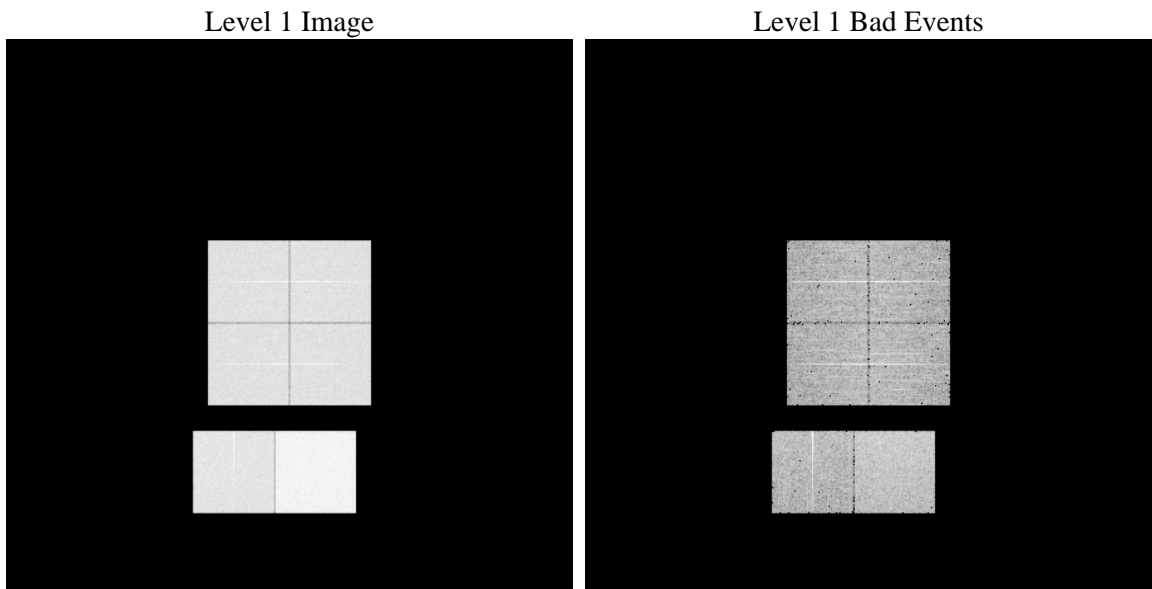
# 1 Front

seq_num	&#160	Sequence number
obs_id	60816	Observation id
title	ACIS-012367 diagnostics	Proposal title
observer	CHANDRA engineering request/realtime commanding	Principal investig
object	&#160	Source name
dtcycle	0	&#160
cycle	P	events from which exps? Prim/Second/Both
ra_targ	0.0	Observer's specified target RA [deg]
dec_targ	0.0	Observer's specified target Dec [deg]
ra_nom	161.25186342775	Nominal RA [deg]
dec_nom	64.979868520783	Nominal Dec [deg]
roll_nom	191.80559768149	Nominal Roll [deg]
revision	4	Processing version of data
ontime	7564.7999718189	Sum of GTIs [s]
livetime	7469.0099196001	Livetime [s]
ontime0	4161.0906094909	Sum of GTIs [s]
ontime1	4174.0953118205	Sum of GTIs [s]
ontime2	4058.0686726272	Sum of GTIs [s]
ontime3	4019.1765612662	Sum of GTIs [s]
ontime6	4449.6620162427	Sum of GTIs [s]
ontime7	7564.7999718189	Sum of GTIs [s]
l2events	1149692	Number of level 2 events

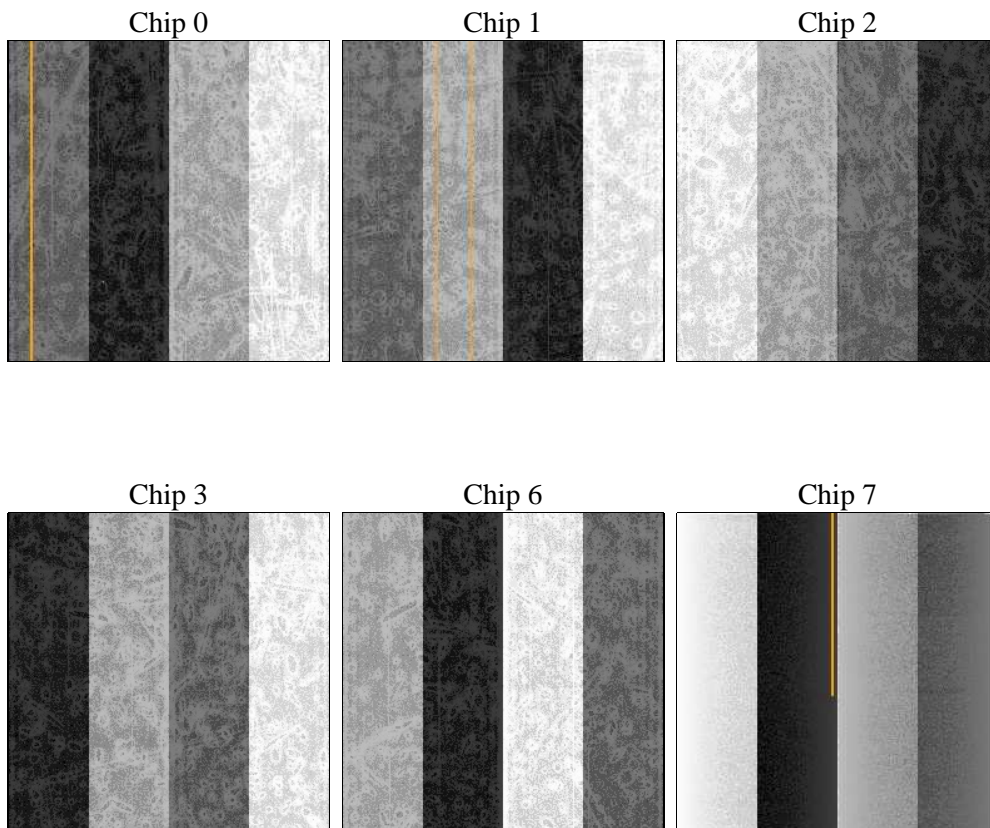
## 2 OBI

### 2.1 OBI

#### 2.1.1 Images



#### 2.1.2 Bias



### 2.1.3 Parameters

obi_num	0	Obi number	sched_exp_time	8100	[s] Scheduled observation exposure time
ascdsver	8.4.5	Processing system revision	ontime	7564.7999718189	Sum of GTIs [s]
caldsver	4.5.2	&#160	ontime0	4161.0906094909	Sum of GTIs [s]
date	2012-10-24T14:52:01	Date and time of file creation	ontime1	4174.0953118205	Sum of GTIs [s]
revision	4	Processing version of data	ontime2	4058.0686726272	Sum of GTIs [s]
			ontime3	4019.1765612662	Sum of GTIs [s]
			ontime6	4449.6620162427	Sum of GTIs [s]
			ontime7	7564.7999718189	Sum of GTIs [s]
			l1events	1425503	Number of level 1 events

### 2.1.4 Events

	ccd 0	ccd 1	ccd 2	ccd 3	ccd 6	ccd 7		ccd 0	ccd 1	ccd 2	ccd 3	ccd 6	ccd 7
level 1 events	204629	205554	202405	203453	229424	380038	grade 0 events	97054	97481	98056	97368	108402	84361
rejected events	33246	33306	32908	35589	36759	51948		47%	47%	48%	47%	47%	22%
rejected %	16%	16%	16%	17%	16%	13%	grade 1 events	553	480	579	615	486	229
								0%	0%	0%	0%	0%	0%
							grade 2 events	31101	31520	29208	29565	34455	74705
								15%	15%	14%	14%	15%	19%
							grade 3 events	11299	11164	11401	11265	12248	34555
								5%	5%	5%	5%	5%	9%
							grade 4 events	11393	11303	11370	11041	12432	33525
								5%	5%	5%	5%	5%	8%
							grade 5 events	1909	1932	1971	1982	2294	8047
								0%	0%	0%	0%	0%	2%
							grade 6 events	25343	25747	24068	23899	31344	110926
								12%	12%	11%	11%	13%	29%
							grade 7 events	25977	25927	25752	27718	27763	33690
								12%	12%	12%	13%	12%	8%

## 2.2 Compared Parameters

Parameter	Planned	Actual
Instrument	ACIS	ACIS
Detector	ACIS-012367	ACIS-012367
Grating	NONE	NONE
Data mode	FAINT	FAINT
Observation mode	SECONDARY	SECONDARY
[deg] Pointing RA	161.2518634277532	161.251863427753
[deg] Pointing Dec	64.97986852078301	64.97986852078294
[deg] Pointing Roll	191.8055976814928	191.8055976814928
[mm] SIM focus pos	-0.78090834371673	-0.78090834371673
[mm] SIM defocus	0.7524282194390134	0.7524282194390134
[mm] SIM translation stage pos	250.4660330802	250.4660330802
[mm] SIM translation stage offset	-0.01005726120527584	-0.01005726120527584
[s] Observation start time (MET)	163804995.195337	163804995.195337
Observation start date	2003-03-11T21:46:00	2003-03-11T21:23:15
[s] Observation end time (MET)	163814333.39633	163814333.39633
Observation end date	2003-03-12T00:01:00	2003-03-11T23:58:53
Read mode	TIMED	TIMED

Parameter	Planned	Actual
Obspar format version number	7	7
Obspar file type	PREDICTED	ACTUAL
Obspar update status	OVERRIDE	OVERRIDE
Number of optional ACIS chips dropped	0	0
On-chip summing requested	N	N
Subarray requested	NONE	NONE
Alternating exposures requested	N	N
[s] Primary exposure time	3.2	3.2

## 2.3 Star Slots

## 2.4 FID Slots

## A Summary

### A.1 Status

V&V Scientist	Beth Sundheim
V&V Date (YYYY-MM-DD)	2013.02.06
V&V Edition	1
V&V Disposition and Status	OK
V&V Charge Time	7.5647999718189

### A.2 Comments