

V&V Reference Report

L2 ASCDS Version : 7.6.8

Observation 60806 - L2 Version 001
Chandra X-Ray Center

L2 Processing Date : Jul 26 2006

Contents

1	Front	2
2	OBI	3
2.1	OBI	3
2.1.1	Images	3
2.1.2	Bias	3
2.1.3	Parameters	4
2.1.4	Events	4
2.2	Compared Parameters	5
2.3	Aspect	6
2.4	Star Slots	8
2.5	FID Slots	8
A	Summary	9
A.1	Status	9
A.2	Comments	9

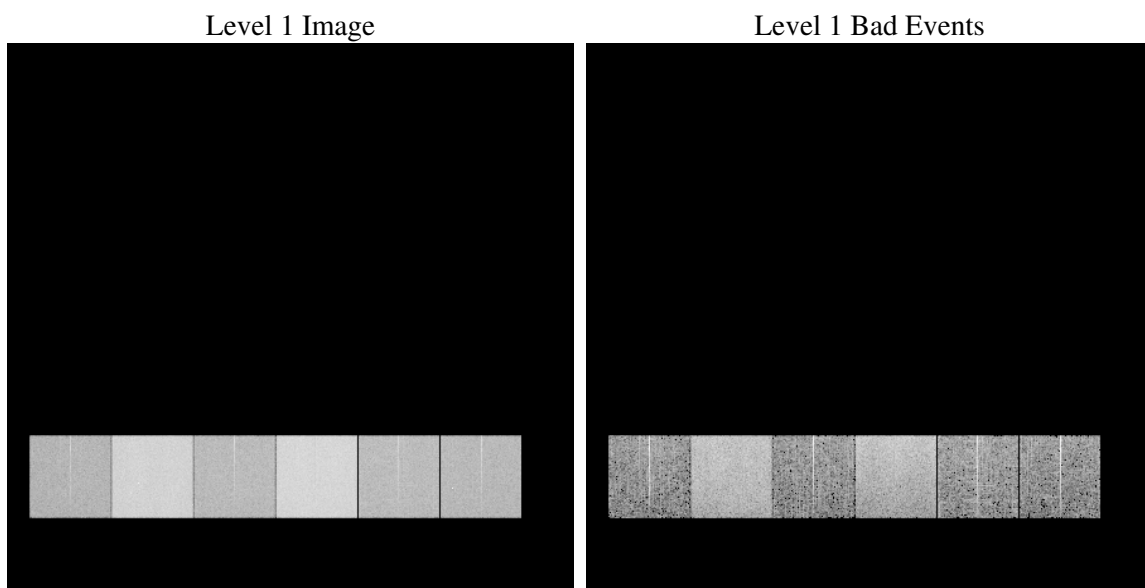
1 Front

seq_num	
obs_id	60806
title	ACIS-456789 diagnostics
observer	CHANDRA engineering request/realtime commanding
object	
dtcycle	0
cycle	P
ra_targ	0.0
dec_targ	0.0
ra_nom	159.72391072401
dec_nom	-8.2160353360676
roll_nom	292.96610495824
revision	2
ontime	8463.9999684691
livetime	8356.8237044595
ontime4	3628.4543347359
ontime5	8463.9999684691
ontime6	4010.8938362896
ontime7	8463.9999684691
ontime8	4069.2319582105
ontime9	3946.0675702691
l2events	1252815

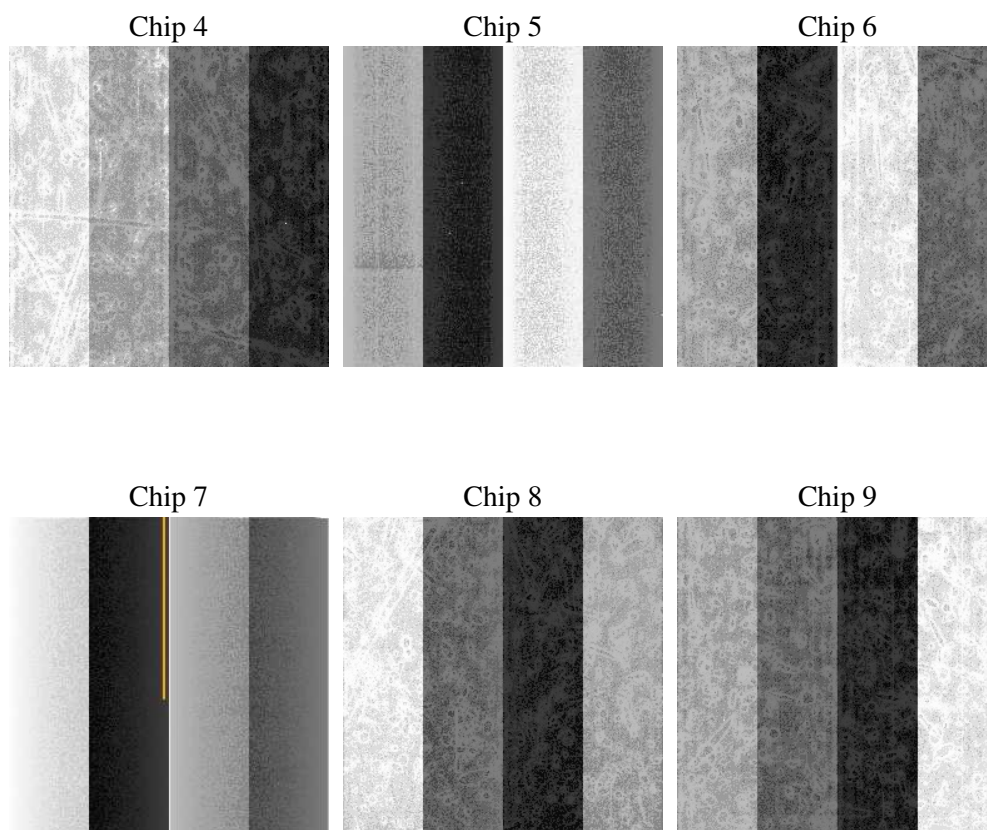
2 OBI

2.1 OBI

2.1.1 Images



2.1.2 Bias



2.1.3 Parameters

obi_num	0
ascdsver	7.6.8
caldsver	3.2.2
date	2006-07-26T05:13:45
revision	2

sched_exp_time	0.0
ontime	8465.5023566186
ontime4	3629.9567228854
ontime5	8465.5023566186
ontime6	4012.3962244391
ontime7	8465.5023566186
ontime8	4070.73434636
ontime9	3947.5763110816
l1events	1542057

2.1.4 Events

	ccd 4	ccd 5	ccd 6	ccd 7	ccd 8	ccd 9
level 1 events	170090	370991	198273	407849	206150	188704
rejected events	26574	63882	26568	56811	30648	25978
rejected %	15%	17%	13%	13%	14%	13%

	ccd 4	ccd 5	ccd 6	ccd 7	ccd 8	ccd 9
grade 0 events	83662	34996	93644	62922	96515	90136
	49%	9%	47%	15%	46%	47%
grade 1 events	555	111	423	148	486	494
	0%	0%	0%	0%	0%	0%
grade 2 events	22848	147292	29622	105965	30512	27919
	13%	39%	14%	25%	14%	14%
grade 3 events	9384	10047	10702	25497	11475	10439
	5%	2%	5%	6%	5%	5%
grade 4 events	9457	9888	10590	25727	11422	10241
	5%	2%	5%	6%	5%	5%
grade 5 events	1681	6945	1915	7362	2251	1888
	0%	1%	0%	1%	1%	1%
grade 6 events	18165	104886	27147	130927	25578	23991
	10%	28%	13%	32%	12%	12%
grade 7 events	24338	56826	24230	49301	27911	23596
	14%	15%	12%	12%	13%	12%

2.2 Compared Parameters

Parameter	Planned	Actual	Parameter	Planned	Actual
Instrument	ACIS	ACIS	Obspar format version number	6	6
Detector	ACIS-456789	ACIS-456789	Obspar file type	PREDICTED	ACTUAL
Grating	NONE	NONE	Obspar update status	NONE	UPDATED
Data mode	FAINT	FAINT	On-chip summing requested	N	N
Observation mode	SECONDARY	SECONDARY	Subarray requested	NONE	NONE
Pointing RA	0	159.7239107240059	Alternating exposures requested	N	N
Pointing Dec	0	-8.216035336067623	Primary exposure time	0.000000	3.2
Pointing Roll	0.0	292.9661049582405			
SIM focus pos (mm)	-0.684267	-0.6828225247311905			
SIM defocus (mm)	0	0.8505141146731063			
SIM translation stage pos (mm)	-190.132523	250.466033080201			
SIM translation stage offset (mm)	0	-0.01005468664627074			
Observation start time	164516794.175347	164516793.15062			
Observation start date	2003-03-20T03:06:34	2003-03-20T03:06:33			
Observation end time	164542316.676425	164542315.65169			
Observation end date	2003-03-20T10:11:57	2003-03-20T10:11:55			
Read mode	TIMED	TIMED			

2.3 Aspect

2.4 Star Slots

2.5 FID Slots

A Summary

A.1 Status

V&V Scientist	Jen Lauer
V&V Date (YYYY-MM-DD)	2006.07.26
V&V Edition	1
V&V Disposition and Status	OK
V&V Charge Time	8.46399996

A.2 Comments