

V&V Reference Report

L2 ASCDS Version : 7.6.8.1

Observation 60776 - L2 Version 001
Chandra X-Ray Center

L2 Processing Date : Aug 5 2006

Contents

1	Front	2
2	OBI	3
2.1	OBI	3
2.1.1	Images	3
2.1.2	Bias	3
2.1.3	Parameters	4
2.1.4	Events	4
2.2	Compared Parameters	5
2.3	Aspect	6
2.4	Star Slots	8
2.5	FID Slots	8
A	Summary	9
A.1	Status	9
A.2	Comments	9

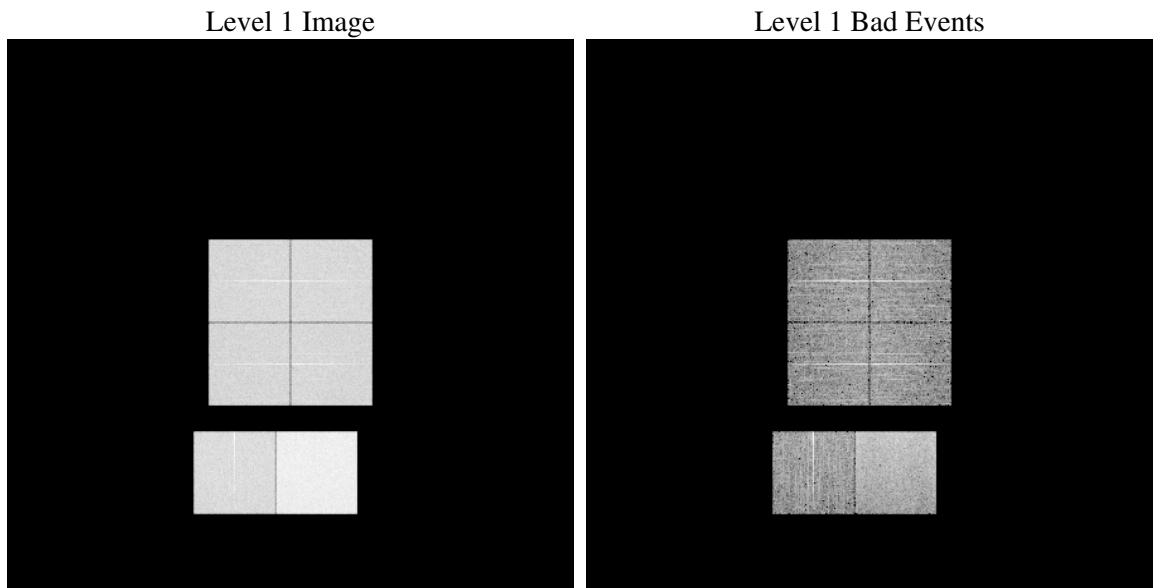
1 Front

seq_num	
obs_id	60776
title	ACIS-012367 diagnostics
observer	CHANDRA engineering request/realtime commanding
object	
dtcycle	0
cycle	P
ra_targ	0.0
dec_targ	0.0
ra_nom	86.117284117301
dec_nom	22.356278400092
roll_nom	271.04994919596
revision	2
ontime	8383.9999687672
livetime	8277.8367129239
ontime0	4834.1026767492
ontime1	4898.9626520872
ontime2	4536.0135125518
ontime3	4639.560429275
ontime6	5065.2536147237
ontime7	8383.9999687672
l2events	1256529

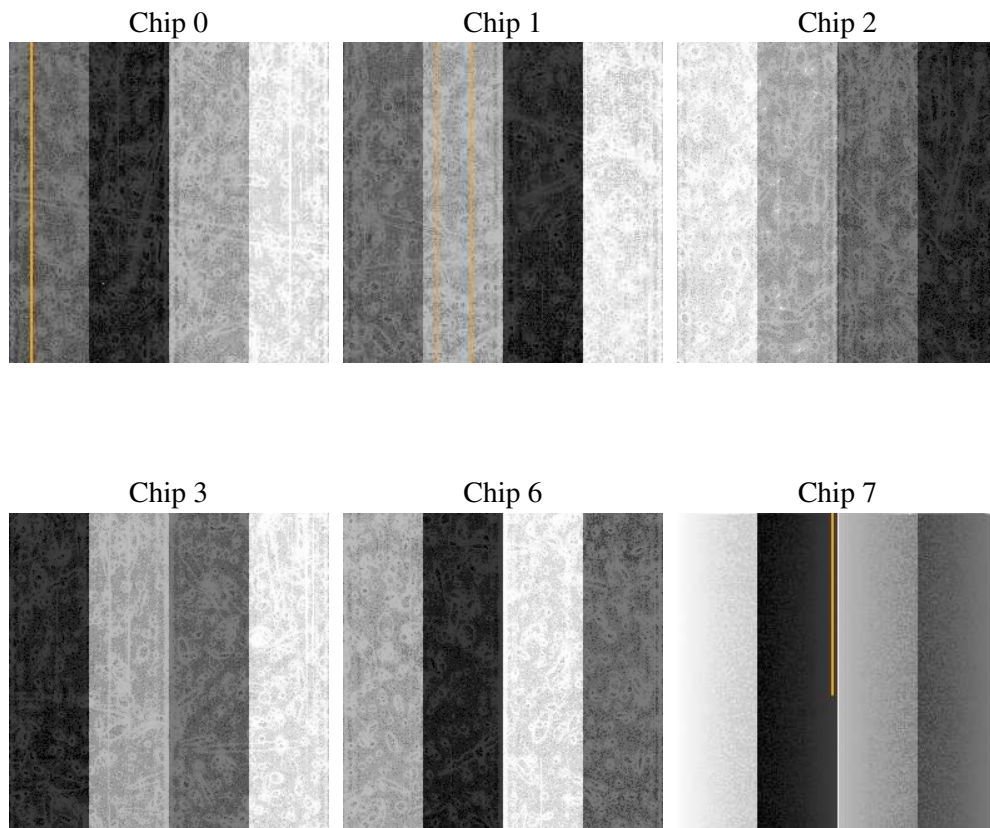
2 OBI

2.1 OBI

2.1.1 Images



2.1.2 Bias



2.1.3 Parameters

obi_num	0
ascdsver	7.6.8.1
caldbver	3.2.2
date	2006-08-05T04:28:59
revision	2

sched_exp_time	0.0
ontime	8468.7278476655
ontime0	4880.9811837971
ontime1	4945.8000593483
ontime2	4573.0868096054
ontime3	4680.0389960706
ontime6	5107.8489105701
ontime7	8468.7278476655
l1events	1542500

2.1.4 Events

	ccd 0	ccd 1	ccd 2	ccd 3	ccd 6	ccd 7
level 1 events	226013	229426	215240	220138	249847	401836
rejected events	32895	32737	31740	32787	36245	61078
rejected %	14%	14%	14%	14%	14%	15%

	ccd 0	ccd 1	ccd 2	ccd 3	ccd 6	ccd 7
grade 0 events	107652	108863	103703	106006	117207	61612
	47%	47%	48%	48%	46%	15%
grade 1 events	566	590	600	604	546	166
	0%	0%	0%	0%	0%	0%
grade 2 events	33987	35193	31146	32347	37001	104124
	15%	15%	14%	14%	14%	25%
grade 3 events	12694	12756	12081	12222	13560	25280
	5%	5%	5%	5%	5%	6%
grade 4 events	12479	12538	12007	12384	13259	24895
	5%	5%	5%	5%	5%	6%
grade 5 events	2150	2192	2021	2110	2471	7350
	0%	0%	0%	0%	0%	1%
grade 6 events	28115	29139	25949	25898	34309	128264
	12%	12%	12%	11%	13%	31%
grade 7 events	28370	28155	27733	28567	31494	50145
	12%	12%	12%	12%	12%	12%

2.2 Compared Parameters

Parameter	Planned	Actual	Parameter	Planned	Actual
Instrument	ACIS	ACIS	Obspar format version number	6	6
Detector	ACIS-012367	ACIS-012367	Obspar file type	PREDICTED	ACTUAL
Grating	NONE	NONE	Obspar update status	NONE	UPDATED
Data mode	FAINT	FAINT	On-chip summing requested	N	N
Observation mode	SECONDARY	SECONDARY	Subarray requested	NONE	NONE
Pointing RA	0	86.11728411730135	Alternating exposures requested	N	N
Pointing Dec	0	22.35627840009223	Primary exposure time	0.000000	3.2
Pointing Roll	0.0	271.0499491959565			
SIM focus pos (mm)	-0.782348	-0.6828225247311905			
SIM defocus (mm)	0	0.8505141146731063			
SIM translation stage pos (mm)	-233.592463	250.466033080201			
SIM translation stage offset (mm)	0	-0.01005468664627074			
Observation start time	166807757.421968	166807756.39726			
Observation start date	2003-04-15T15:29:17	2003-04-15T15:29:16			
Observation end time	166829069.222867	166829068.19816			
Observation end date	2003-04-15T21:24:29	2003-04-15T21:24:28			
Read mode	TIMED	TIMED			

2.3 Aspect

2.4 Star Slots

2.5 FID Slots

A Summary

A.1 Status

V&V Scientist	Beth Sundheim
V&V Date (YYYY-MM-DD)	2006.08.06
V&V Edition	1
V&V Disposition and Status	OK
V&V Charge Time	8.38399996

A.2 Comments