

V&V Reference Report

L2 ASCDS Version : 7.6.8.1

Observation 60736 - L2 Version 001
Chandra X-Ray Center

L2 Processing Date : Aug 12 2006

Contents

1	Front	2
2	OBI	3
2.1	OBI	3
2.1.1	Images	3
2.1.2	Bias	3
2.1.3	Parameters	4
2.1.4	Events	4
2.2	Compared Parameters	5
2.3	Aspect	6
2.4	Star Slots	8
2.5	FID Slots	8
A	Summary	9
A.1	Status	9
A.2	Comments	9

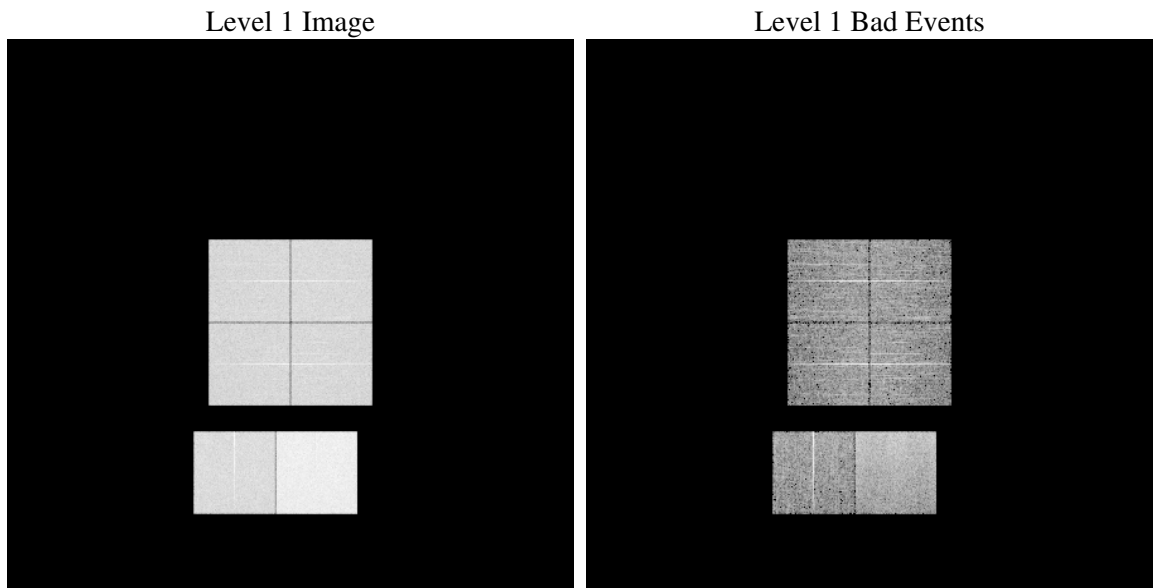
1 Front

seq_num	
obs_id	60736
title	ACIS-012367 diagnostics
observer	CHANDRA engineering request/realtime commanding
object	
dtcycle	0
cycle	P
ra_targ	0.0
dec_targ	0.0
ra_nom	229.03978022362
dec_nom	-48.988333912686
roll_nom	351.17822655092
revision	2
ontime	8463.9999684691
livetime	8356.8237044595
ontime0	4934.5795603096
ontime1	5070.701367557
ontime2	4762.8070598841
ontime3	4824.8768408298
ontime6	5197.7962619066
ontime7	8463.9999684691
l2events	1263258

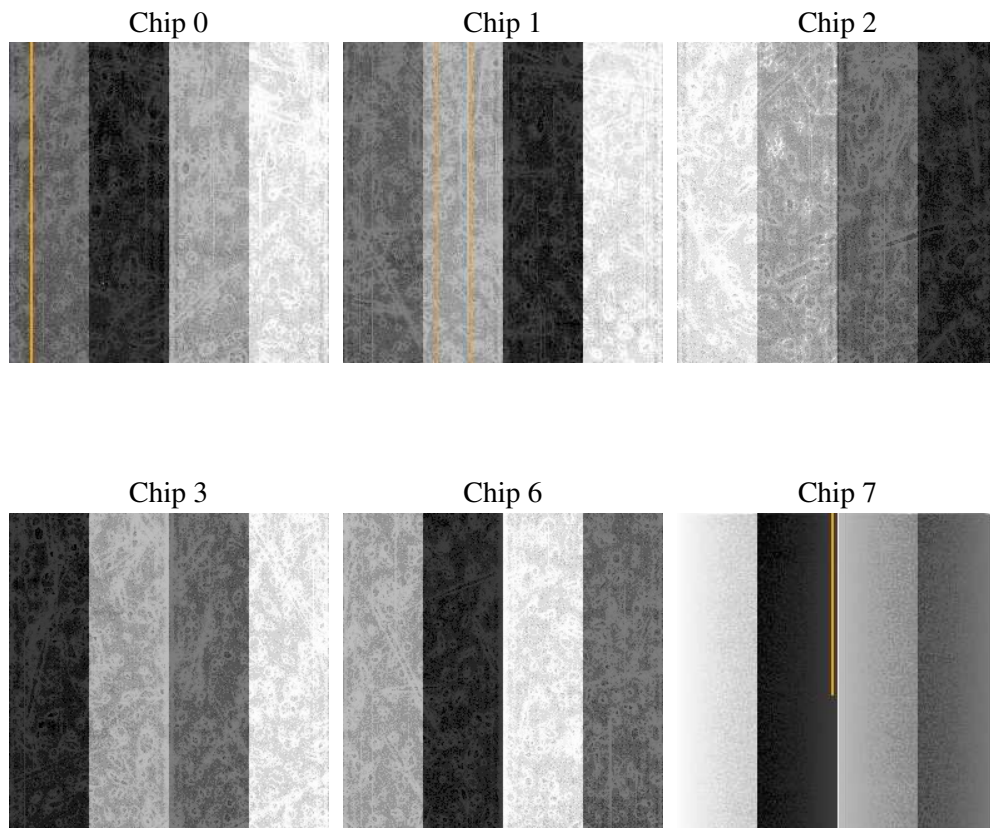
2 OBI

2.1 OBI

2.1.1 Images



2.1.2 Bias



2.1.3 Parameters

obi_num	1
ascdsver	7.6.8.1
caldbver	3.2.3
date	2006-08-12T11:22:34
revision	2

sched_exp_time	0.0
ontime	8465.5008084774
ontime0	4936.0804003179
ontime1	5072.2022075653
ontime2	4764.3078998923
ontime3	4825.8865640759
ontime6	5198.600785166
ontime7	8465.5008084774
l1events	1542208

2.1.4 Events

	ccd 0	ccd 1	ccd 2	ccd 3	ccd 6	ccd 7
level 1 events	224701	230396	219441	224188	248785	394697
rejected events	31748	32253	31108	32759	34460	57250
rejected %	14%	13%	14%	14%	13%	14%

	ccd 0	ccd 1	ccd 2	ccd 3	ccd 6	ccd 7
grade 0 events	106911	108887	106050	107737	116635	59888
	47%	47%	48%	48%	46%	15%
grade 1 events	579	519	585	603	533	156
	0%	0%	0%	0%	0%	0%
grade 2 events	33468	35014	31853	32393	36921	102130
	14%	15%	14%	14%	14%	25%
grade 3 events	12578	12468	12170	12678	13431	24851
	5%	5%	5%	5%	5%	6%
grade 4 events	12565	12695	12124	12488	13211	24314
	5%	5%	5%	5%	5%	6%
grade 5 events	2106	2281	2080	2299	2466	7306
	0%	0%	0%	1%	0%	1%
grade 6 events	27431	29079	26136	26133	34127	126264
	12%	12%	11%	11%	13%	31%
grade 7 events	29063	29453	28443	29857	31461	49788
	12%	12%	12%	13%	12%	12%

2.2 Compared Parameters

Parameter	Planned	Actual	Parameter	Planned	Actual
Instrument	ACIS	ACIS	Obspar format version number	6	6
Detector	ACIS-012367	ACIS-012367	Obspar file type	PREDICTED	ACTUAL
Grating	NONE	NONE	Obspar update status	NONE	UPDATED
Data mode	FAINT	FAINT	On-chip summing requested	N	N
Observation mode	SECONDARY	SECONDARY	Subarray requested	NONE	NONE
Pointing RA	0	229.0397802236193	Alternating exposures requested	N	N
Pointing Dec	0	-48.98833391268614	Primary exposure time	0.000000	3.2
Pointing Roll	0.0	351.1782265509162			
SIM focus pos (mm)	-0.782348	-0.6828225247311905			
SIM defocus (mm)	0	0.8505141146731063			
SIM translation stage pos (mm)	-233.592463	250.466033080201			
SIM translation stage offset (mm)	0	-0.01005468664627074			
Observation start time	169548794.087884	169548793.06317			
Observation start date	2003-05-17T08:53:14	2003-05-17T08:53:13			
Observation end time	169571803.288858	169571802.26415			
Observation end date	2003-05-17T15:16:43	2003-05-17T15:16:42			
Read mode	TIMED	TIMED			

2.3 Aspect

2.4 Star Slots

2.5 FID Slots

A Summary

A.1 Status

V&V Scientist	Jen Lauer
V&V Date (YYYY-MM-DD)	2006.08.13
V&V Edition	1
V&V Disposition and Status	OK
V&V Charge Time	8.46399996

A.2 Comments