

# V&V Reference Report

## L2 ASCDS Version : 7.6.7.2

Observation 60276 - L2 Version 001  
Chandra X-Ray Center

L2 Processing Date : May 25 2006

## Contents

<b>1</b>	<b>Front</b>	<b>2</b>
<b>2</b>	<b>OBI</b>	<b>3</b>
2.1	OBI . . . . .	3
2.1.1	Images . . . . .	3
2.1.2	Bias . . . . .	3
2.1.3	Parameters . . . . .	4
2.1.4	Events . . . . .	4
2.2	Compared Parameters . . . . .	5
2.3	Aspect . . . . .	6
2.4	Star Slots . . . . .	8
2.5	FID Slots . . . . .	8
<b>A</b>	<b>Summary</b>	<b>9</b>
A.1	Status . . . . .	9
A.2	Comments . . . . .	9

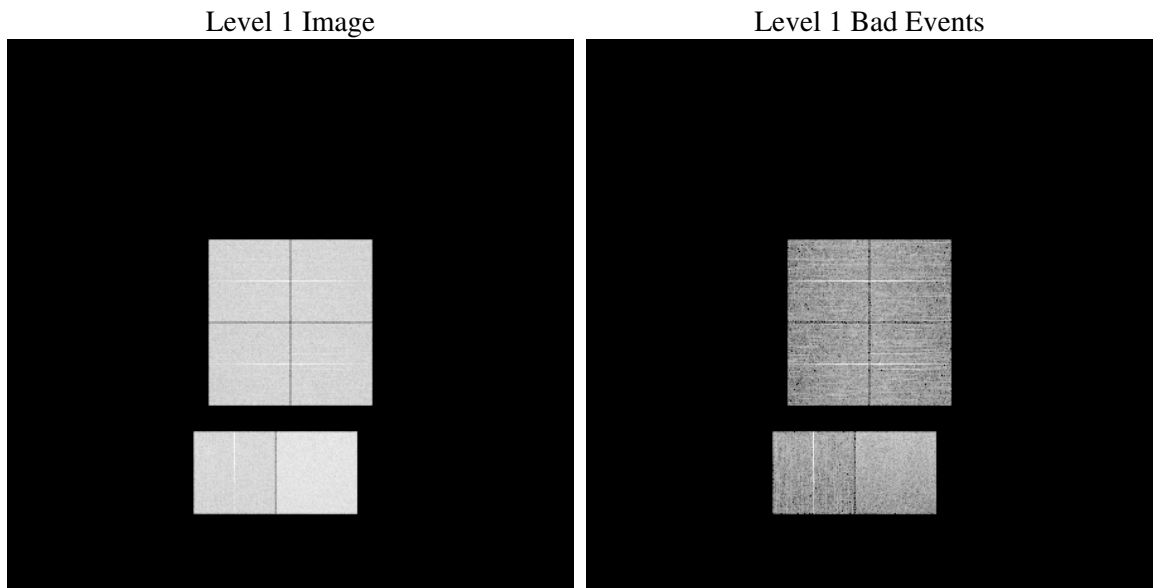
# 1 Front

seq_num	&#160
obs_id	60276
title	ACIS-012367 diagnostics
observer	CHANDRA engineering request/realtime commanding
object	&#160
dtcycle	0
cycle	P
ra_targ	0.0
dec_targ	0.0
ra_nom	215.97078204847
dec_nom	14.995341232717
roll_nom	156.48010271015
revision	2
ontime	7801.5999709368
livetime	7702.8114145452
ontime0	5610.7055346668
ontime1	5594.5004633963
ontime2	5306.0551959276
ontime3	5390.320153743
ontime6	5656.0772343576
ontime7	7801.5999709368
l2events	1100792

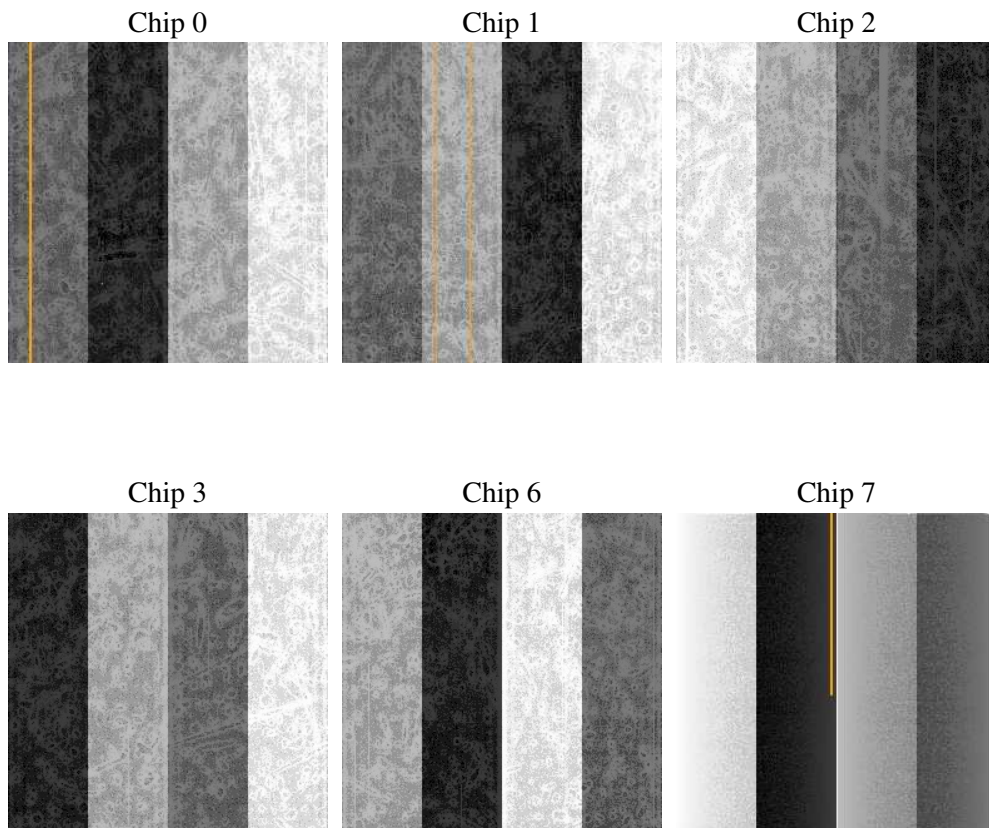
## 2 OBI

### 2.1 OBI

#### 2.1.1 Images



#### 2.1.2 Bias



### 2.1.3 Parameters

obi_num	0
ascdsver	7.6.7.2
caldbver	3.2.2
date	2006-05-25T18:49:33
revision	2

sched_exp_time	0.0
ontime	7804.3318035603
ontime0	5613.4373672903
ontime1	5597.2322960198
ontime2	5308.7870285511
ontime3	5393.0519863665
ontime6	5658.8090669811
ontime7	7804.3318035603
l1events	1416209

### 2.1.4 Events

	ccd 0	ccd 1	ccd 2	ccd 3	ccd 6	ccd 7
level 1 events	219419	219835	210581	216135	232054	318185
rejected events	40495	40319	39280	42449	42170	56457
rejected %	18%	18%	18%	19%	18%	17%

	ccd 0	ccd 1	ccd 2	ccd 3	ccd 6	ccd 7
grade 0 events	98364	98184	95598	96898	102767	46165
	44%	44%	45%	44%	44%	14%
grade 1 events	557	493	617	597	503	109
	0%	0%	0%	0%	0%	0%
grade 2 events	31245	31823	29039	29752	32814	78903
	14%	14%	13%	13%	14%	24%
grade 3 events	11699	11406	11040	11448	11817	19054
	5%	5%	5%	5%	5%	5%
grade 4 events	11448	11388	11251	11435	11962	18477
	5%	5%	5%	5%	5%	5%
grade 5 events	2496	2640	2397	2701	2843	7079
	1%	1%	1%	1%	1%	2%
grade 6 events	26276	26812	24489	24251	30524	99243
	11%	12%	11%	11%	13%	31%
grade 7 events	37334	37089	36150	39053	38824	49155
	17%	16%	17%	18%	16%	15%

## 2.2 Compared Parameters

Parameter	Planned	Actual	Parameter	Planned	Actual
Instrument	ACIS	ACIS	Obspar format version number	6	6
Detector	ACIS-012367	ACIS-012367	Obspar file type	PREDICTED	ACTUAL
Grating	NONE	NONE	Obspar update status	NONE	UPDATED
Data mode	FAINT	FAINT	On-chip summing requested	N	N
Observation mode	SECONDARY	SECONDARY	Subarray requested	NONE	NONE
Pointing RA	0	215.9707820484663	Alternating exposures requested	N	N
Pointing Dec	0	14.99534123271658	Primary exposure time	0.000000	3.2
Pointing Roll	0.0	156.480102710152			
SIM focus pos (mm)	-0.782348	-0.6828225247311905			
SIM defocus (mm)	0	0.8505141146731063			
SIM translation stage pos (mm)	-233.592463	250.466033080201			
SIM translation stage offset (mm)	0	-0.01005468664627074			
Observation start time	198527857.739335	198527856.71434			
Observation start date	2004-04-16T18:37:38	2004-04-16T18:37:36			
Observation end time	198542088.839961	198542087.81496			
Observation end date	2004-04-16T22:34:49	2004-04-16T22:34:47			
Read mode	TIMED	TIMED			

## 2.3 Aspect



## **2.4 Star Slots**

## **2.5 FID Slots**



## A Summary

### A.1 Status

V&V Scientist	Jen Lauer
V&V Date (YYYY-MM-DD)	2006.05.25
V&V Edition	1
V&V Disposition and Status	OK
V&V Charge Time	7.80159997

### A.2 Comments