

# V&V Reference Report

## L2 ASCDS Version : 8.4.5

Observation 60196 - L2 Version 3  
Chandra X-Ray Center

L2 Processing Date : Dec 3 2012

## Contents

<b>1</b>	<b>Front</b>	<b>2</b>
<b>2</b>	<b>OBI</b>	<b>3</b>
2.1	OBI . . . . .	3
2.1.1	Images . . . . .	3
2.1.2	Bias . . . . .	3
2.1.3	Parameters . . . . .	4
2.1.4	Events . . . . .	4
2.2	Compared Parameters . . . . .	5
2.3	Star Slots . . . . .	6
2.4	FID Slots . . . . .	6
<b>A</b>	<b>Summary</b>	<b>7</b>
A.1	Status . . . . .	7
A.2	Comments . . . . .	7

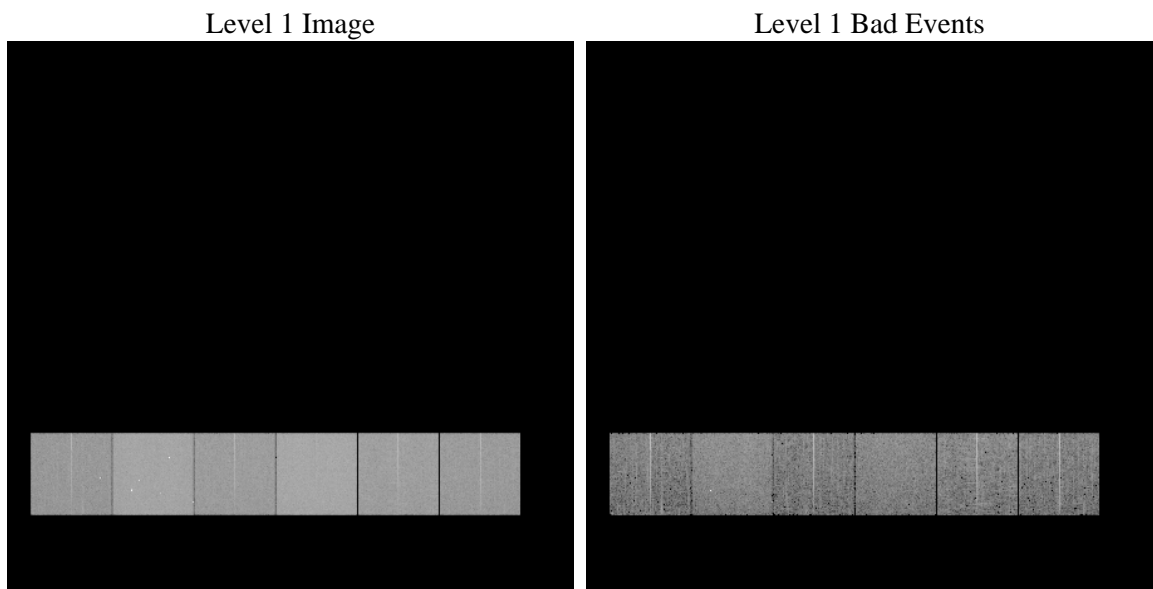
# 1 Front

seq_num	&#160	Sequence number
obs_id	60196	Observation id
title	ACIS-456789 diagnostics	Proposal title
observer	CHANDRA engineering request/realtime commanding	Principal investig
object	&#160	Source name
dtcycle	0	&#160
cycle	P	events from which exps? Prim/Second/Both
ra_targ	0.0	Observer's specified target RA [deg]
dec_targ	0.0	Observer's specified target Dec [deg]
ra_nom	236.00354310955	Nominal RA [deg]
dec_nom	-13.028410175878	Nominal Dec [deg]
roll_nom	244.14090852903	Nominal Roll [deg]
revision	3	Processing version of data
ontime	7266.7866574824	Sum of GTIs [s]
livetime	7174.7702292917	Livetime [s]
ontime4	4534.1918360293	Sum of GTIs [s]
ontime5	7266.7456174791	Sum of GTIs [s]
ontime6	5108.2123536766	Sum of GTIs [s]
ontime7	7266.7866574824	Sum of GTIs [s]
ontime8	5269.8958908617	Sum of GTIs [s]
ontime9	4845.8155839443	Sum of GTIs [s]
l2events	1008236	Number of level 2 events

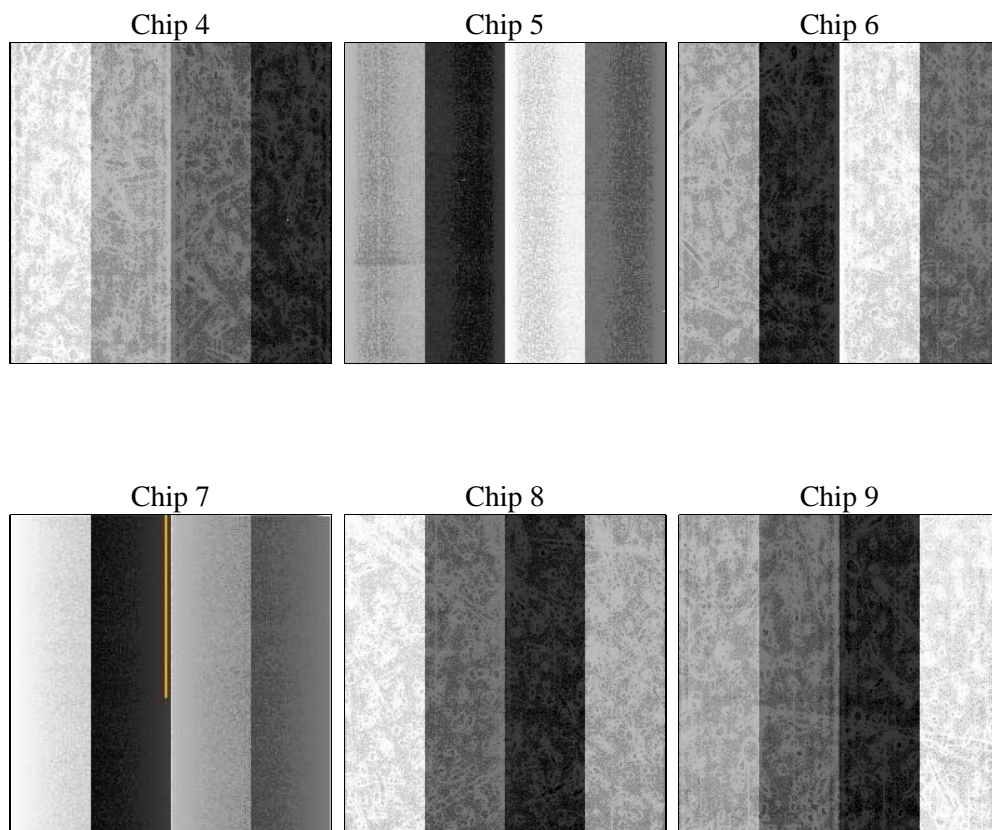
## 2 OBI

### 2.1 OBI

#### 2.1.1 Images



#### 2.1.2 Bias



### 2.1.3 Parameters

obi_num	0	Obi number	sched_exp_time	0.0	[s] Scheduled observation exposure time
ascdsver	8.4.5	Processing system revision	ontime	7266.7866574824	Sum of GTIs [s]
caldsver	4.5.2	&#160	ontime4	4534.1918360293	Sum of GTIs [s]
date	2012-12-03T08:49:24	Date and time of file creation	ontime5	7266.7456174791	Sum of GTIs [s]
revision	3	Processing version of data	ontime6	5108.2123536766	Sum of GTIs [s]
			ontime7	7266.7866574824	Sum of GTIs [s]
			ontime8	5269.8958908617	Sum of GTIs [s]
			ontime9	4845.8155839443	Sum of GTIs [s]
			l1events	1318806	Number of level 1 events

### 2.1.4 Events

	ccd 4	ccd 5	ccd 6	ccd 7	ccd 8	ccd 9		ccd 4	ccd 5	ccd 6	ccd 7	ccd 8	ccd 9
level 1 events	170248	267730	198181	284176	214453	184018	grade 0 events	77480	48367	87824	58428	92803	80654
rejected events	37296	51837	36764	43634	44135	37403		45%	18%	44%	20%	43%	43%
rejected %	21%	19%	18%	15%	20%	20%	grade 1 events	637	242	430	196	507	485
								0%	0%	0%	0%	0%	0%
							grade 2 events	20843	78107	27880	52948	29784	25416
								12%	29%	14%	18%	13%	13%
							grade 3 events	8773	12819	10161	23903	10921	9290
								5%	4%	5%	8%	5%	5%
							grade 4 events	8950	12546	10278	24133	11223	9450
								5%	4%	5%	8%	5%	5%
							grade 5 events	2221	8505	2665	7946	3018	2585
								1%	3%	1%	2%	1%	1%
							grade 6 events	16906	64148	25361	81235	25587	21879
								9%	23%	12%	28%	11%	11%
							grade 7 events	34438	42996	33582	35387	40610	34259
								20%	16%	16%	12%	18%	18%

## 2.2 Compared Parameters

Parameter	Planned	Actual	Parameter	Planned	Actual
Instrument	ACIS	ACIS	Obspar format version number	7	7
Detector	ACIS-456789	ACIS-456789	Obspar file type	PREDICTED	ACTUAL
Grating	NONE	NONE	Obspar update status	NONE	UPDATED
Data mode	FAINT	FAINT	On-chip summing requested	N	N
Observation mode	SECONDARY	SECONDARY	Subarray requested	NONE	NONE
[deg] Pointing RA	0	236.0035431095546	Alternating exposures requested	N	N
[deg] Pointing Dec	0	-13.0284101758784	[s] Primary exposure time	0.000000	3.2
[deg] Pointing Roll	0.0	244.1409085290256			
[mm] SIM focus pos	-0.684267	-0.6828225247311905			
[mm] SIM defocus	0	0.8505141146731063			
[mm] SIM translation stage pos	-190.132523	250.466033080201			
[mm] SIM translation stage offset	0	-0.01005468664627074			
[s] Observation start time (MET)	203554542.011232	203554540.98622			
Observation start date	2004-06-13T22:55:42	2004-06-13T22:55:40			
[s] Observation end time (MET)	203567973.611827	203567972.58682			
Observation end date	2004-06-14T02:39:34	2004-06-14T02:39:32			
Read mode	TIMED	TIMED			

## **2.3 Star Slots**

## **2.4 FID Slots**

## A Summary

### A.1 Status

V&V Scientist	Jen Lauer
V&V Date (YYYY-MM-DD)	2012.12.18
V&V Edition	1
V&V Disposition and Status	OK
V&V Charge Time	7.2667866574824

### A.2 Comments