

# V&V Reference Report

## L2 ASCDS Version : 7.6.7.1

Observation 60076 - L2 Version <sub>e</sub>1  
Chandra X-Ray Center

L2 Processing Date : Apr 19 2006

## Contents

<b>1</b>	<b>Front</b>	<b>2</b>
<b>2</b>	<b>OBI Primary</b>	<b>3</b>
2.1	OBI . . . . .	3
2.1.1	Images . . . . .	3
2.1.2	Bias . . . . .	3
2.1.3	Parameters . . . . .	4
2.1.4	Events . . . . .	4
2.2	Compared Parameters . . . . .	5
2.3	Aspect . . . . .	6
2.4	Star Slots . . . . .	8
2.5	FID Slots . . . . .	8
<b>3</b>	<b>OBI Secondary</b>	<b>8</b>
3.1	OBI . . . . .	8
3.1.1	Images . . . . .	8
3.1.2	Bias . . . . .	8
3.1.3	Parameters . . . . .	9
3.1.4	Events . . . . .	9
<b>A</b>	<b>Summary</b>	<b>10</b>
A.1	Status . . . . .	10
A.2	Comments . . . . .	10

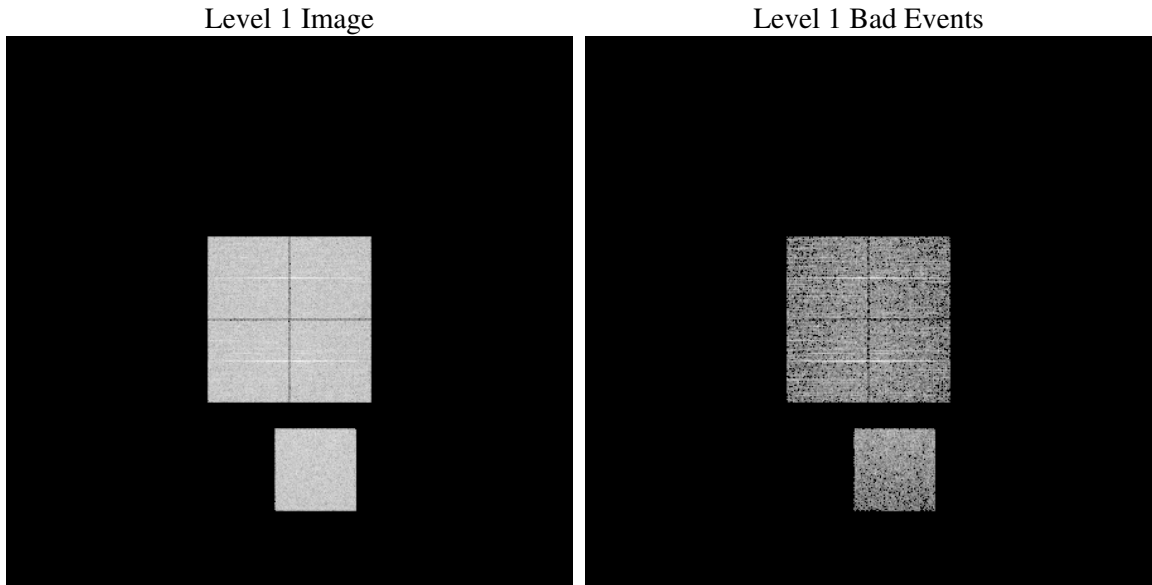
# 1 Front

seq_num	&#160
obs_id	60076
title	ACIS-01237 diagnostics
observer	CHANDRA engineering request/realtime commanding
object	&#160
dtcycle	0
cycle	P
ra_targ	0.0
dec_targ	0.0
ra_nom	280.01232735685
dec_nom	-1.5296322531971
roll_nom	260.2973745498
revision	2
ontime	4895.021419853
livetime	2158.2073333108
ontime0	4895.1855798662
ontime1	4895.1445398629
ontime2	4895.1034799516
ontime3	4895.0624598563
ontime7	4895.021419853
l2events	304751

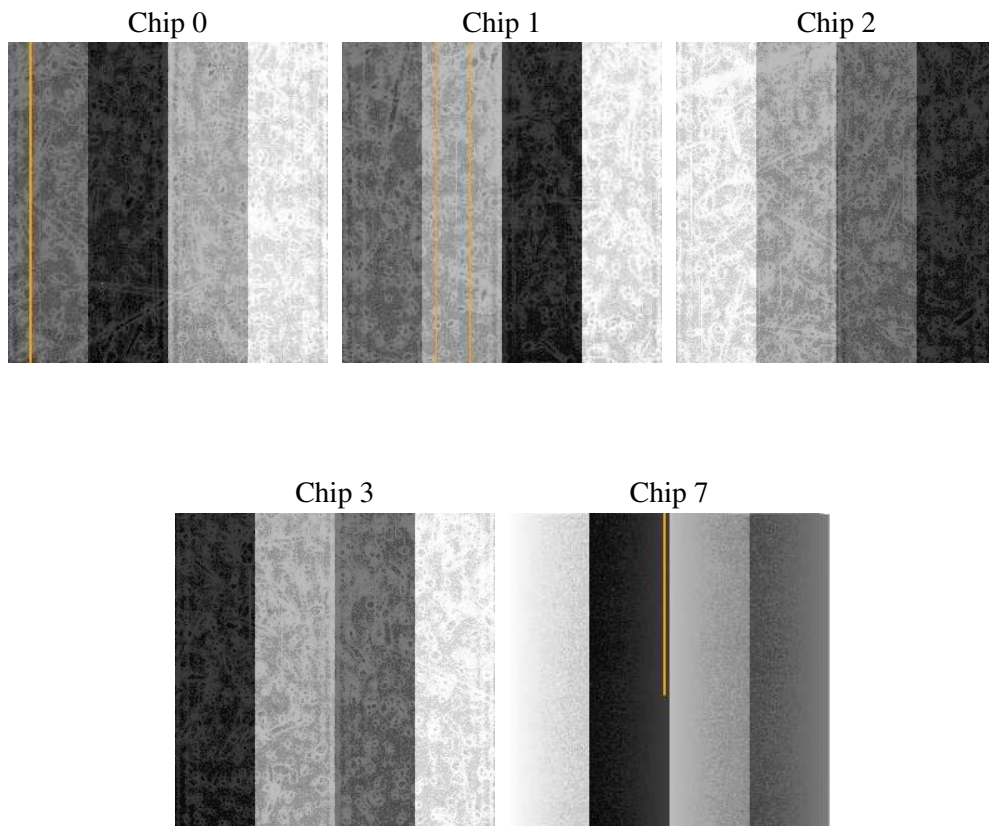
## 2 OBI Primary

### 2.1 OBI

#### 2.1.1 Images



#### 2.1.2 Bias



### 2.1.3 Parameters

obi_num	0
ascdsver	7.6.7.1
caldbver	3.2.1
date	2006-04-19T17:43:33
revision	2

sched_exp_time	0.0
ontime	4899.0873727798
ontime0	4899.0873727798
ontime1	4899.0873727798
ontime2	4899.0873727798
ontime3	4899.0873727798
ontime7	4899.0873727798
llevents	410325

### 2.1.4 Events

	ccd 0	ccd 1	ccd 2	ccd 3	ccd 7
level 1 events	80708	80508	82882	82131	84096
rejected events	17942	16974	19103	18352	17017
rejected %	22%	21%	23%	22%	20%

	ccd 0	ccd 1	ccd 2	ccd 3	ccd 7
grade 0 events	34437	34699	35666	35699	12103
	42%	43%	43%	43%	14%
grade 1 events	178	168	215	175	32
	0%	0%	0%	0%	0%
grade 2 events	10930	11314	10780	10900	20210
	13%	14%	13%	13%	24%
grade 3 events	4134	4075	4224	4220	5020
	5%	5%	5%	5%	5%
grade 4 events	4086	4147	4102	4317	4833
	5%	5%	4%	5%	5%
grade 5 events	998	1011	984	1020	1976
	1%	1%	1%	1%	2%
grade 6 events	9179	9299	9007	8643	24913
	11%	11%	10%	10%	29%
grade 7 events	16766	15795	17904	17157	15009
	20%	19%	21%	20%	17%

## 2.2 Compared Parameters

Parameter	Planned	Actual	Parameter	Planned	Actual
Instrument	ACIS	ACIS	Obspar format version number	6	6
Detector	ACIS-01237	ACIS-01237	Obspar file type	PREDICTED	ACTUAL
Grating	NONE	NONE	Obspar update status	NONE	UPDATED
Data mode	FAINT	FAINT	On-chip summing requested	N	N
Observation mode	SECONDARY	SECONDARY	Subarray requested	NONE	NONE
Pointing RA	0	280.0123273568503	Alternating exposures requested	Y	Y
Pointing Dec	0	-1.529632253197079	Primary exposure time	2.5	2.5
Pointing Roll	0.0	260.2973745498011	Secondary exposure time	3.2	3.2
SIM focus pos (mm)	-0.782348	-1.428180813131781	Duty cycle	1	1
SIM defocus (mm)	0	0.1051558262725154			
SIM translation stage pos (mm)	-233.592463	250.466033080201			
SIM translation stage offset (mm)	0	-0.01005468664627074			
Observation start time	210179250.555409	210179249.53044			
Observation start date	2004-08-29T15:07:31	2004-08-29T15:07:29			
Observation end time	210194547.65609	210194546.63112			
Observation end date	2004-08-29T19:22:28	2004-08-29T19:22:26			
Read mode	TIMED	TIMED			

## 2.3 Aspect



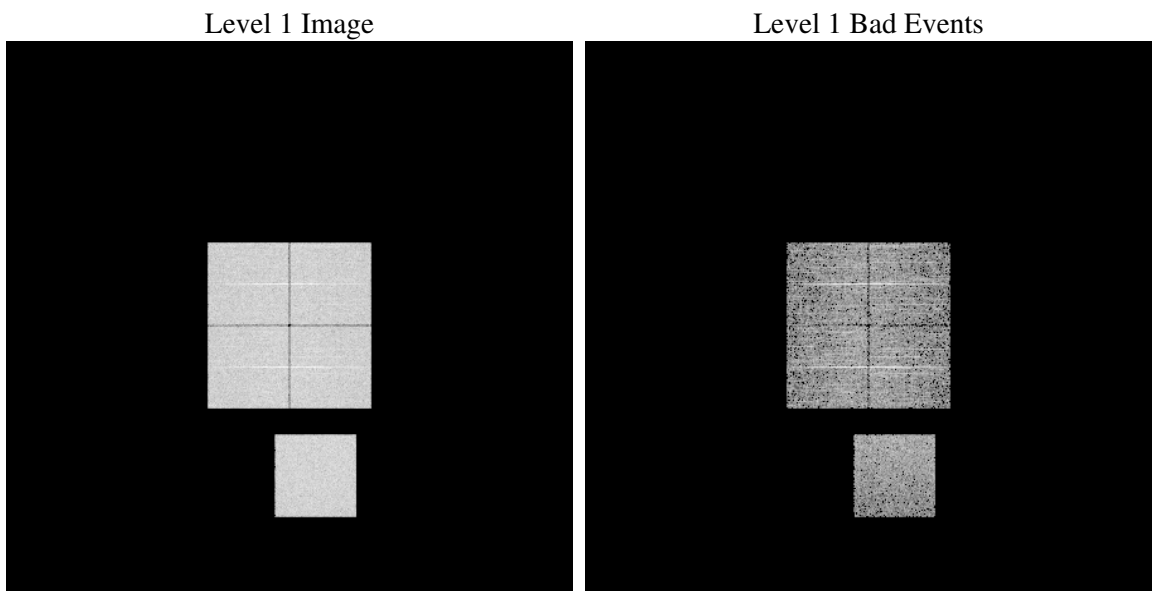
## 2.4 Star Slots

## 2.5 FID Slots

# 3 OBI Secondary

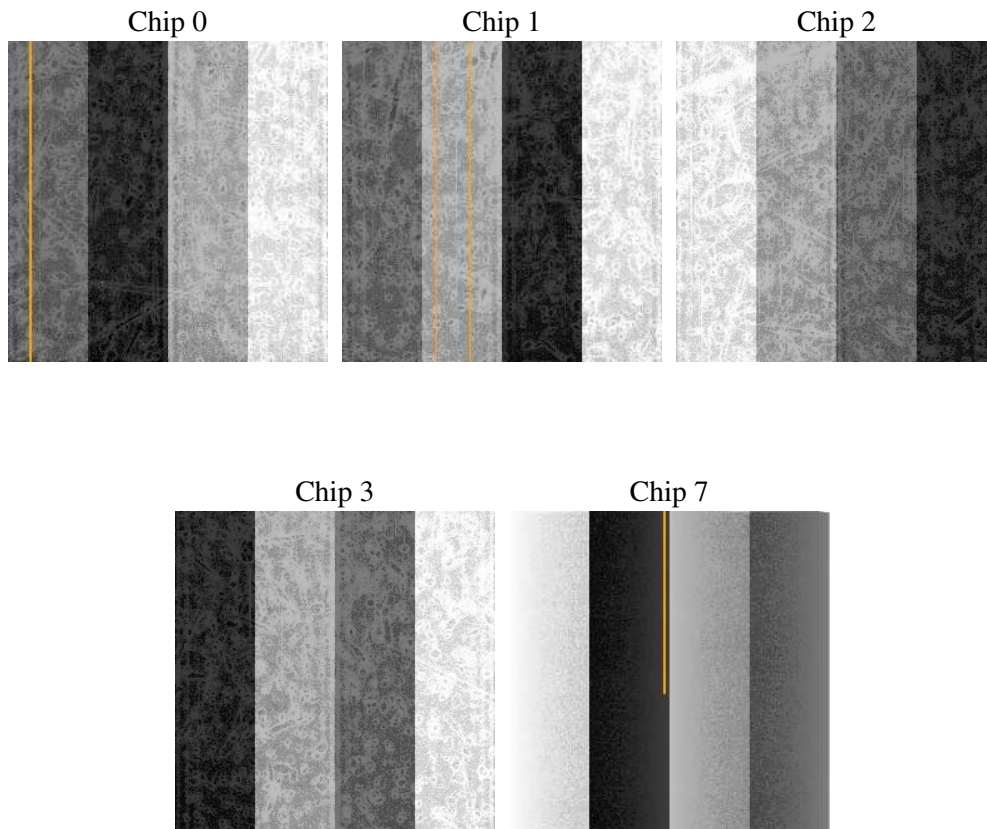
## 3.1 OBI

### 3.1.1 Images



### 3.1.2 Bias





### 3.1.3 Parameters

obi_num	0
ascdsver	7.6.7.1
caldsver	3.2.1
date	2006-04-19T17:45:38
revision	2

sched_exp_time	0.0
ontime	2800.2585525513
ontime0	2800.2585525513
ontime1	2800.2585525513
ontime2	2800.2585525513
ontime3	2800.2585525513
ontime7	2800.2585525513
l1events	508398

### 3.1.4 Events

	ccd 0	ccd 1	ccd 2	ccd 3	ccd 7
level 1 events	99292	99455	101708	101960	105983
rejected events	19539	19692	21698	21148	20491
rejected %	19%	19%	21%	20%	19%

	ccd 0	ccd 1	ccd 2	ccd 3	ccd 7
grade 0 events	43751	43474	44924	45309	14885
	44%	43%	44%	44%	14%
grade 1 events	241	220	277	272	48
	0%	0%	0%	0%	0%
grade 2 events	14095	14229	13534	13857	25693
	14%	14%	13%	13%	24%
grade 3 events	5242	5344	5133	5323	6212
	5%	5%	5%	5%	5%
grade 4 events	5264	5076	5283	5330	6231
	5%	5%	5%	5%	5%
grade 5 events	1250	1273	1220	1360	2563
	1%	1%	1%	1%	2%
grade 6 events	11494	11736	11213	11078	32585
	11%	11%	11%	10%	30%
grade 7 events	17955	18103	20124	19431	17766
	18%	18%	19%	19%	16%

## A Summary

### A.1 Status

V&V Scientist	Beth Sundheim
V&V Date (YYYY-MM-DD)	2006.04.19
V&V Edition	1
V&V Disposition and Status	OK
V&V Charge Time	7.69168111

### A.2 Comments