

V&V Reference Report

L2 ASCDS Version : 8.5

Observation 60006 - L2 Version 3
Chandra X-Ray Center

L2 Processing Date : Dec 9 2012

Contents

1	Front	2
2	OBI	3
2.1	OBI	3
2.1.1	Images	3
2.1.2	Bias	3
2.1.3	Parameters	4
2.1.4	Events	4
2.2	Compared Parameters	5
2.3	Star Slots	6
2.4	FID Slots	6
A	Summary	7
A.1	Status	7
A.2	Comments	7

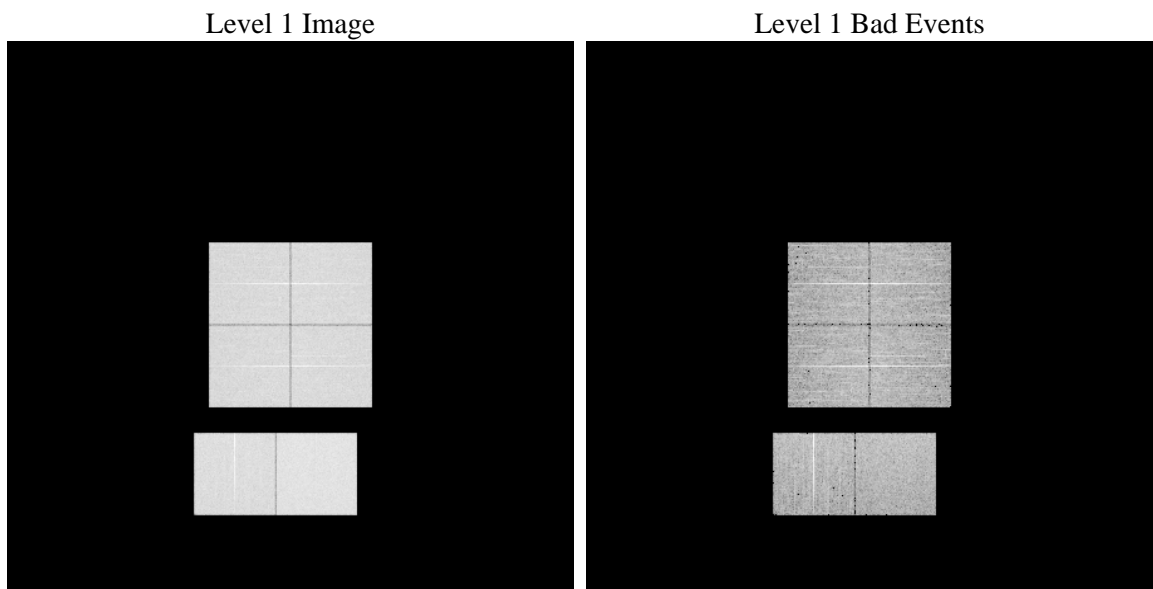
1 Front

seq_num	 	Sequence number
obs_id	60006	Observation id
title	ACIS-012367 diagnostics	Proposal title
observer	CHANDRA engineering request/realtime commanding	Principal investig
object	 	Source name
dtcycle	0	
cycle	P	events from which exps? Prim/Second/Both
ra_targ	0.0	Observer's specified target RA [deg]
dec_targ	0.0	Observer's specified target Dec [deg]
ra_nom	0.032959304284908	Nominal RA [deg]
dec_nom	-24.997457093858	Nominal Dec [deg]
roll_nom	328.49337951934	Nominal Roll [deg]
revision	3	Processing version of data
ontime	7800.6955395639	Sum of GTIs [s]
livetime	7701.918435627	Livetime [s]
ontime0	6206.1734178364	Sum of GTIs [s]
ontime1	6377.9870401621	Sum of GTIs [s]
ontime2	6048.2287653983	Sum of GTIs [s]
ontime3	6202.8509460688	Sum of GTIs [s]
ontime6	6699.6664717495	Sum of GTIs [s]
ontime7	7800.6955395639	Sum of GTIs [s]
l2events	1071199	Number of level 2 events

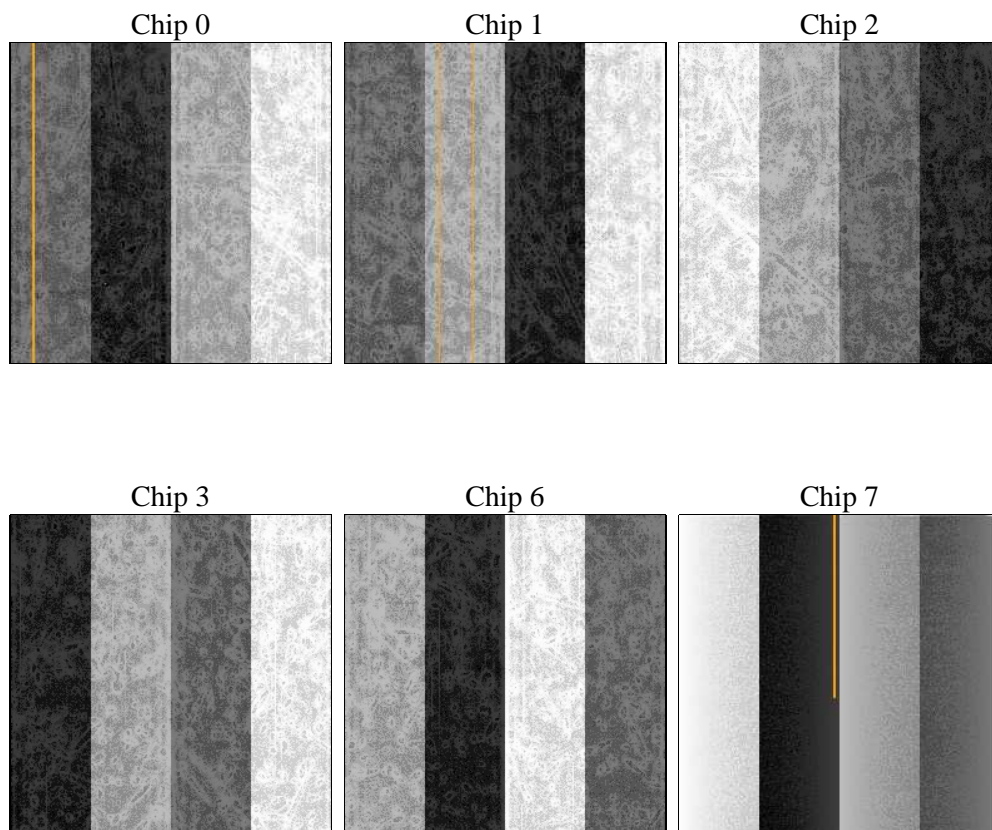
2 OBI

2.1 OBI

2.1.1 Images



2.1.2 Bias



2.1.3 Parameters

obi_num	0	Obi number	sched_exp_time	0.0	[s] Scheduled observation exposure time
ascdsver	8.5	Processing system revision	ontime	7800.6955395639	Sum of GTIs [s]
caldsver	4.5.4	 	ontime0	6206.1734178364	Sum of GTIs [s]
date	2012-12-10T01:40:08	Date and time of file creation	ontime1	6377.9870401621	Sum of GTIs [s]
revision	3	Processing version of data	ontime2	6048.2287653983	Sum of GTIs [s]
			ontime3	6202.8509460688	Sum of GTIs [s]
			ontime6	6699.6664717495	Sum of GTIs [s]
			ontime7	7800.6955395639	Sum of GTIs [s]
			l1events	1412235	Number of level 1 events

2.1.4 Events

	ccd 0	ccd 1	ccd 2	ccd 3	ccd 6	ccd 7		ccd 0	ccd 1	ccd 2	ccd 3	ccd 6	ccd 7
level 1 events	215814	222677	215741	221605	246472	289926	grade 0 events	93915	96318	94195	97594	105521	58204
rejected events	45042	46524	47126	47808	51937	49237		43%	43%	43%	44%	42%	20%
rejected %	20%	20%	21%	21%	21%	16%	grade 1 events	602	543	586	603	566	190
								0%	0%	0%	0%	0%	0%
							grade 2 events	30008	31491	28762	29654	33888	52640
								13%	14%	13%	13%	13%	18%
							grade 3 events	11069	11333	10946	11283	12122	24214
								5%	5%	5%	5%	4%	8%
							grade 4 events	11168	11285	11127	11350	12193	24105
								5%	5%	5%	5%	4%	8%
							grade 5 events	2816	2963	2648	2941	3344	8875
								1%	1%	1%	1%	1%	3%
							grade 6 events	24612	25726	23664	23916	30928	81526
								11%	11%	10%	10%	12%	28%
							grade 7 events	41624	43018	43813	44264	47910	40172
								19%	19%	20%	19%	19%	13%

2.2 Compared Parameters

Parameter	Planned	Actual	Parameter	Planned	Actual
Instrument	ACIS	ACIS	Obspar format version number	7	7
Detector	ACIS-012367	ACIS-012367	Obspar file type	PREDICTED	ACTUAL
Grating	NONE	NONE	Obspar update status	NONE	UPDATED
Data mode	FAINT	FAINT	On-chip summing requested	N	N
Observation mode	SECONDARY	SECONDARY	Subarray requested	NONE	NONE
[deg] Pointing RA	0	0.03295930428490834	Alternating exposures requested	N	N
[deg] Pointing Dec	0	-24.99745709385847	[s] Primary exposure time	3.2	3.2
[deg] Pointing Roll	0.0	328.4933795193397			
[mm] SIM focus pos	-0.782348	-0.6828225247311905			
[mm] SIM defocus	0	0.8505141146731063			
[mm] SIM translation stage pos	-233.592463	250.4635187648994			
[mm] SIM translation stage offset	0	-0.007540371344731511			
[s] Observation start time (MET)	214063111.028867	214063110.00387			
Observation start date	2004-10-13T13:58:31	2004-10-13T13:58:30			
[s] Observation end time (MET)	214102579.680632	214102578.65563			
Observation end date	2004-10-14T00:56:20	2004-10-14T00:56:18			
Read mode	TIMED	TIMED			

2.3 Star Slots

2.4 FID Slots

A Summary

A.1 Status

V&V Scientist	Beth Sundheim
V&V Date (YYYY-MM-DD)	2013.01.02
V&V Edition	1
V&V Disposition and Status	OK
V&V Charge Time	7.8006955395639

A.2 Comments