

V&V Reference Report

L2 ASCDS Version : 7.6.7.1

Observation 60006 - L2 Version 001
Chandra X-Ray Center

L2 Processing Date : Apr 15 2006

Contents

1	Front	2
2	OBI	3
2.1	OBI	3
2.1.1	Images	3
2.1.2	Bias	3
2.1.3	Parameters	4
2.1.4	Events	4
2.2	Compared Parameters	5
2.3	Aspect	6
2.4	Star Slots	8
2.5	FID Slots	8
A	Summary	9
A.1	Status	9
A.2	Comments	9

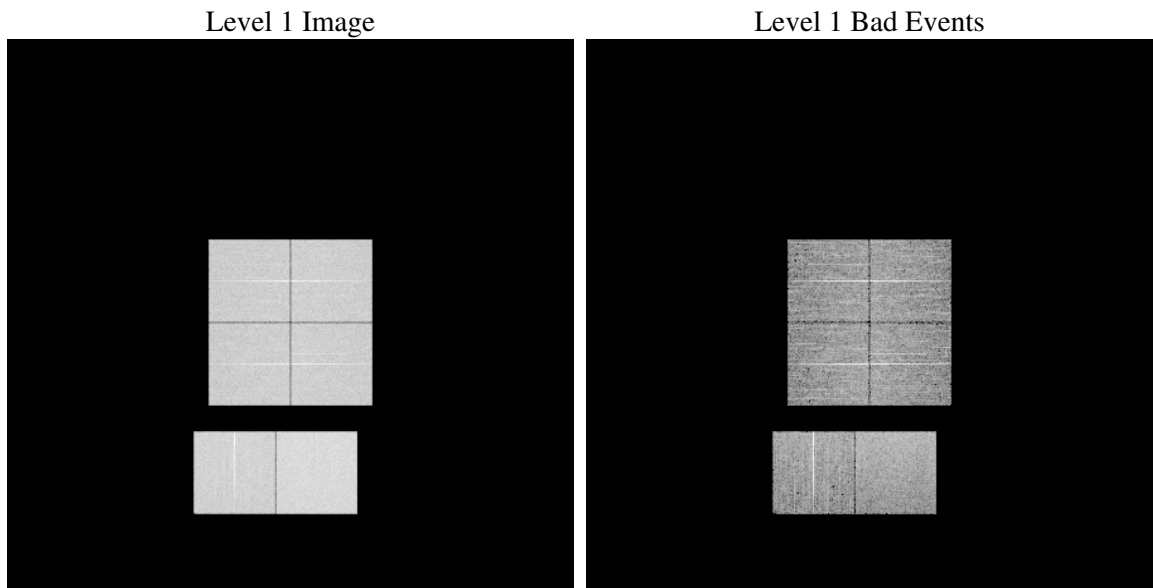
1 Front

seq_num	
obs_id	60006
title	ACIS-012367 diagnostics
observer	CHANDRA engineering request/realtime commanding
object	
dtcycle	0
cycle	P
ra_targ	0.0
dec_targ	0.0
ra_nom	0.032933111334227
dec_nom	-24.997442656112
roll_nom	328.49336878802
revision	2
ontime	7799.0955395699
livetime	7700.3386957963
ontime0	6204.5734178424
ontime1	6376.387040168
ontime2	6048.2287653983
ontime3	6201.2509460747
ontime6	6699.6664717495
ontime7	7799.0955395699
l2events	1061987

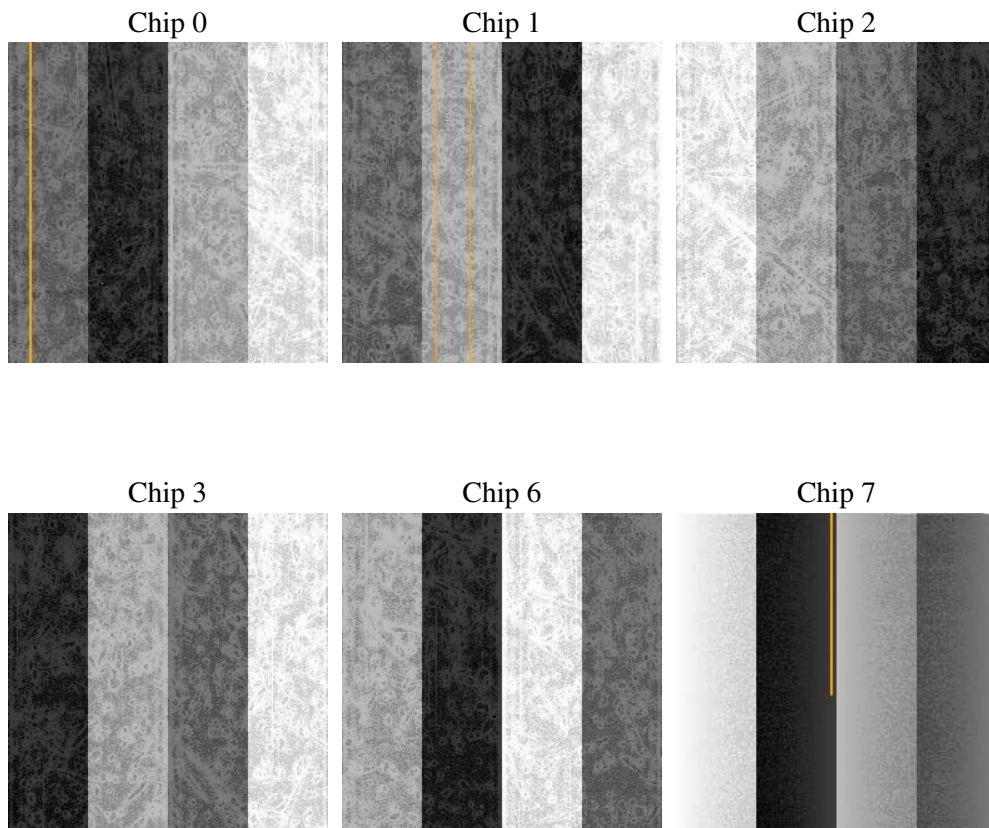
2 OBI

2.1 OBI

2.1.1 Images



2.1.2 Bias



2.1.3 Parameters

obi_num	0
ascdsver	7.6.7.1
caldbver	3.2.1
date	2006-04-15T16:26:17
revision	2

sched_exp_time	0.0
ontime	7801.110878706
ontime0	6206.5477169752
ontime1	6378.3202992976
ontime2	6050.9806932509
ontime3	6203.3073252141
ontime6	6702.4183996022
ontime7	7801.110878706
l1events	1412235

2.1.4 Events

	ccd 0	ccd 1	ccd 2	ccd 3	ccd 6	ccd 7
level 1 events	215814	222677	215741	221605	246472	289926
rejected events	45132	46625	47142	47895	51929	58368
rejected %	20%	20%	21%	21%	21%	20%

	ccd 0	ccd 1	ccd 2	ccd 3	ccd 6	ccd 7
grade 0 events	93905	96306	94186	97582	105492	40383
	43%	43%	43%	44%	42%	13%
grade 1 events	602	542	585	599	566	119
	0%	0%	0%	0%	0%	0%
grade 2 events	30018	31503	28771	29666	33917	69155
	13%	14%	13%	13%	13%	23%
grade 3 events	11067	11328	10941	11277	12117	16875
	5%	5%	5%	5%	4%	5%
grade 4 events	11164	11280	11122	11345	12186	16725
	5%	5%	5%	5%	4%	5%
grade 5 events	2815	2961	2649	2943	3339	7108
	1%	1%	1%	1%	1%	2%
grade 6 events	24617	25733	23673	23927	30934	88510
	11%	11%	10%	10%	12%	30%
grade 7 events	41626	43024	43814	44266	47921	51051
	19%	19%	20%	19%	19%	17%

2.2 Compared Parameters

Parameter	Planned	Actual	Parameter	Planned	Actual
Instrument	ACIS	ACIS	Obspar format version number	6	6
Detector	ACIS-012367	ACIS-012367	Obspar file type	PREDICTED	ACTUAL
Grating	NONE	NONE	Obspar update status	NONE	UPDATED
Data mode	FAINT	FAINT	On-chip summing requested	N	N
Observation mode	SECONDARY	SECONDARY	Subarray requested	NONE	NONE
Pointing RA	0	0.03293311133422683	Alternating exposures requested	N	N
Pointing Dec	0	-24.99744265611209	Primary exposure time	3.2	3.2
Pointing Roll	0.0	328.4933687880242			
SIM focus pos (mm)	-0.782348	-0.6828225247311905			
SIM defocus (mm)	0	0.8505141146731063			
SIM translation stage pos (mm)	-233.592463	250.4635187648994			
SIM translation stage offset (mm)	0	-0.007540371344731511			
Observation start time	214063111.028867	214063110.00387			
Observation start date	2004-10-13T13:58:31	2004-10-13T13:58:30			
Observation end time	214102579.680632	214102578.65563			
Observation end date	2004-10-14T00:56:20	2004-10-14T00:56:18			
Read mode	TIMED	TIMED			

2.3 Aspect

2.4 Star Slots

2.5 FID Slots

A Summary

A.1 Status

V&V Scientist	Beth Sundheim
V&V Date (YYYY-MM-DD)	2006.04.16
V&V Edition	1
V&V Disposition and Status	OK
V&V Charge Time	7.79909553

A.2 Comments