

V&V Reference Report

L2 ASCDS Version : 7.6.7.1

Observation 59966 - L2 Version 001
Chandra X-Ray Center

L2 Processing Date : Apr 12 2006

Contents

| | | |
|----------|-------------------------------|----------|
| 1 | Front | 2 |
| 2 | OBI | 3 |
| 2.1 | OBI | 3 |
| 2.1.1 | Images | 3 |
| 2.1.2 | Bias | 3 |
| 2.1.3 | Parameters | 4 |
| 2.1.4 | Events | 4 |
| 2.2 | Compared Parameters | 5 |
| 2.3 | Aspect | 6 |
| 2.4 | Star Slots | 8 |
| 2.5 | FID Slots | 8 |
| A | Summary | 9 |
| A.1 | Status | 9 |
| A.2 | Comments | 9 |

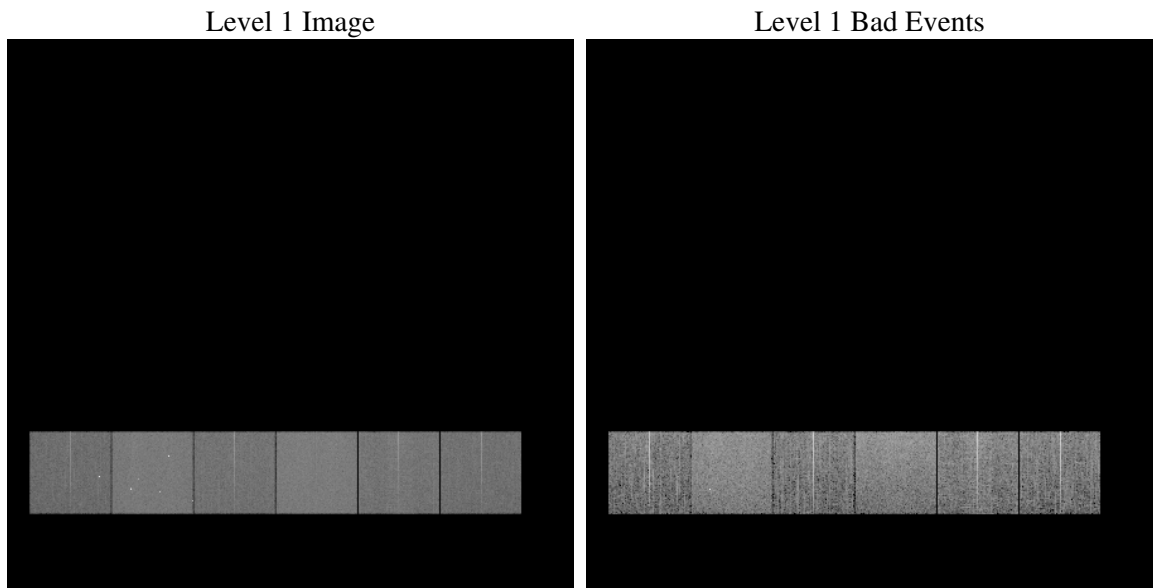
1 Front

| | |
|----------|---|
| seq_num | |
| obs_id | 59966 |
| title | ACIS-456789 diagnostics |
| observer | CHANDRA engineering request/realtime commanding |
| object | |
| dtcycle | 0 |
| cycle | P |
| ra_targ | 0.0 |
| dec_targ | 0.0 |
| ra_nom | 51.027142637539 |
| dec_nom | 12.01065710884 |
| roll_nom | 348.99093135916 |
| revision | 2 |
| ontime | 7800.7694277465 |
| livetime | 7701.991388193 |
| ontime4 | 5597.0250857174 |
| ontime5 | 7800.8104677498 |
| ontime6 | 6154.4329545796 |
| ontime7 | 7800.7694277465 |
| ontime8 | 6293.8778527975 |
| ontime9 | 5985.7789983451 |
| l2events | 1038657 |

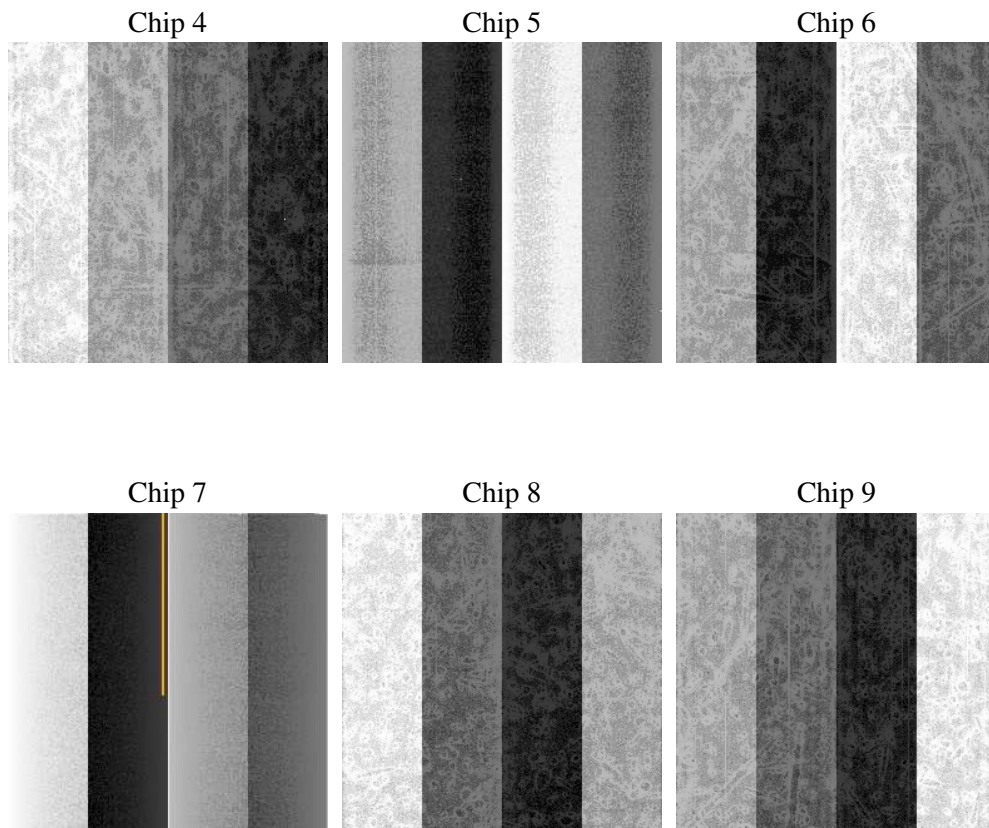
2 OBI

2.1 OBI

2.1.1 Images



2.1.2 Bias



2.1.3 Parameters

| | |
|----------|---------------------|
| obi_num | 2 |
| ascdsver | 7.6.7.1 |
| caldbver | 3.2.1 |
| date | 2006-04-12T09:37:02 |
| revision | 2 |

| | |
|----------------|-----------------|
| sched_exp_time | 0.0 |
| ontime | 7801.1089797318 |
| ontime4 | 5597.2415176928 |
| ontime5 | 7801.1089797318 |
| ontime6 | 6154.6904265583 |
| ontime7 | 7801.1089797318 |
| ontime8 | 6294.0532447994 |
| ontime9 | 5986.1595903337 |
| l1events | 1411414 |

2.1.4 Events

| | ccd 4 | ccd 5 | ccd 6 | ccd 7 | ccd 8 | ccd 9 |
|-----------------|--------|--------|--------|--------|--------|--------|
| level 1 events | 192344 | 268841 | 222179 | 282849 | 235759 | 209442 |
| rejected events | 43306 | 60997 | 46351 | 57783 | 51460 | 45782 |
| rejected % | 22% | 22% | 20% | 20% | 21% | 21% |

| | ccd 4 | ccd 5 | ccd 6 | ccd 7 | ccd 8 | ccd 9 |
|----------------|-------|-------|-------|-------|--------|-------|
| grade 0 events | 86669 | 24498 | 95602 | 38139 | 100046 | 89890 |
| | 45% | 9% | 43% | 13% | 42% | 42% |
| grade 1 events | 649 | 114 | 450 | 104 | 559 | 486 |
| | 0% | 0% | 0% | 0% | 0% | 0% |
| grade 2 events | 23479 | 96825 | 30622 | 68151 | 32205 | 28078 |
| | 12% | 36% | 13% | 24% | 13% | 13% |
| grade 3 events | 9979 | 6534 | 10863 | 16059 | 11982 | 10286 |
| | 5% | 2% | 4% | 5% | 5% | 4% |
| grade 4 events | 9723 | 6295 | 10913 | 15671 | 12163 | 10425 |
| | 5% | 2% | 4% | 5% | 5% | 4% |
| grade 5 events | 2526 | 6041 | 3009 | 6815 | 3570 | 3111 |
| | 1% | 2% | 1% | 2% | 1% | 1% |
| grade 6 events | 19188 | 73692 | 27828 | 87046 | 27903 | 24981 |
| | 9% | 27% | 12% | 30% | 11% | 11% |
| grade 7 events | 40131 | 54842 | 42892 | 50864 | 47331 | 42185 |
| | 20% | 20% | 19% | 17% | 20% | 20% |

2.2 Compared Parameters

| Parameter | Planned | Actual | Parameter | Planned | Actual |
|-----------------------------------|---------------------|----------------------|---------------------------------|-----------|---------|
| Instrument | ACIS | ACIS | Obspar format version number | 6 | 6 |
| Detector | ACIS-456789 | ACIS-456789 | Obspar file type | PREDICTED | ACTUAL |
| Grating | NONE | NONE | Obspar update status | NONE | UPDATED |
| Data mode | FAINT | FAINT | On-chip summing requested | N | N |
| Observation mode | SECONDARY | SECONDARY | Subarray requested | NONE | NONE |
| Pointing RA | 0 | 51.02714263753922 | Alternating exposures requested | N | N |
| Pointing Dec | 0 | 12.0106571088398 | Primary exposure time | 3.2 | 3.2 |
| Pointing Roll | 0.0 | 348.990931359156 | | | |
| SIM focus pos (mm) | -0.684267 | -0.7809083437167272 | | | |
| SIM defocus (mm) | 0 | 0.7524282956875696 | | | |
| SIM translation stage pos (mm) | -190.132523 | 250.466033080201 | | | |
| SIM translation stage offset (mm) | 0 | -0.01005468664627074 | | | |
| Observation start time | 217028512.011737 | 217028510.98673 | | | |
| Observation start date | 2004-11-16T21:41:52 | 2004-11-16T21:41:50 | | | |
| Observation end time | 217047609.812595 | 217047608.78759 | | | |
| Observation end date | 2004-11-17T03:00:10 | 2004-11-17T03:00:08 | | | |
| Read mode | TIMED | TIMED | | | |

2.3 Aspect

2.4 Star Slots

2.5 FID Slots

A Summary

A.1 Status

| | |
|----------------------------|------------|
| V&V Scientist | Jen Lauer |
| V&V Date (YYYY-MM-DD) | 2006.04.12 |
| V&V Edition | 1 |
| V&V Disposition and Status | OK |
| V&V Charge Time | 7.80076942 |

A.2 Comments