

V&V Reference Report

L2 ASCDS Version : 7.6.7.1

Observation 59626 - L2 Version 002
Chandra X-Ray Center

L2 Processing Date : Mar 10 2006

Contents

1	Front	2
2	OBI	3
2.1	OBI	3
2.1.1	Images	3
2.1.2	Bias	3
2.1.3	Parameters	4
2.1.4	Events	4
2.2	Compared Parameters	5
2.3	Aspect	6
2.4	Star Slots	8
2.5	FID Slots	8
A	Summary	9
A.1	Status	9
A.2	Comments	9

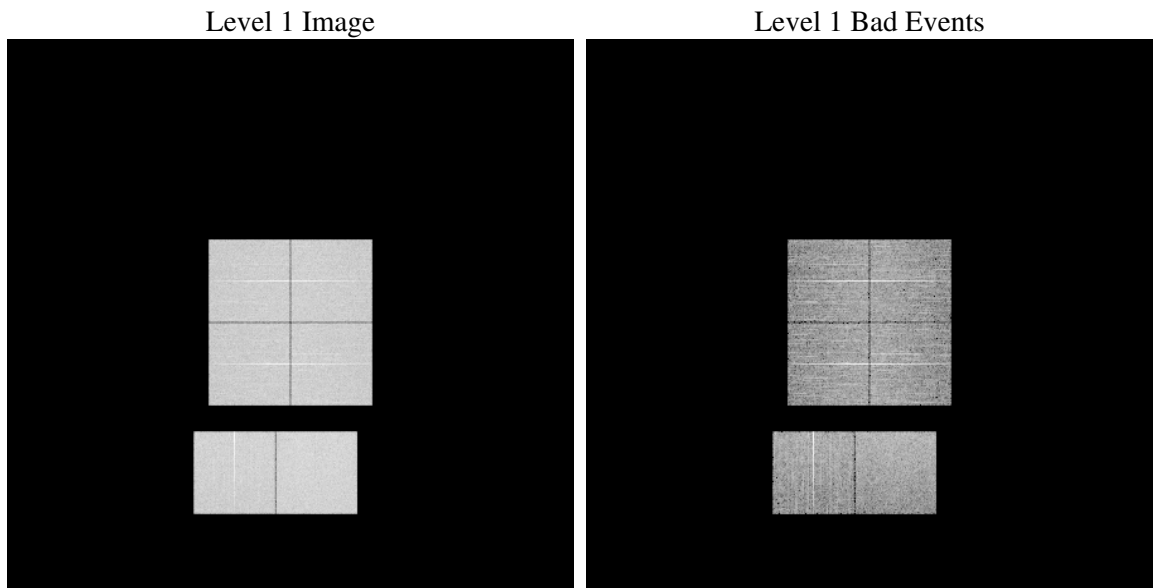
1 Front

seq_num	
obs_id	59626
title	ACIS-012367 diagnostics
observer	CHANDRA engineering request/realtime commanding
object	
dtcycle	0
cycle	P
ra_targ	0.0
dec_targ	0.0
ra_nom	234.98612100971
dec_nom	15.97471374099
roll_nom	209.31454358128
revision	2
ontime	7801.4465803504
livetime	7702.6599662828
ontime0	7127.3629584312
ontime1	7221.3923978806
ontime2	6894.0939280093
ontime3	7052.7382304072
ontime6	7412.6819151044
ontime7	7801.4465803504
l2events	1032912

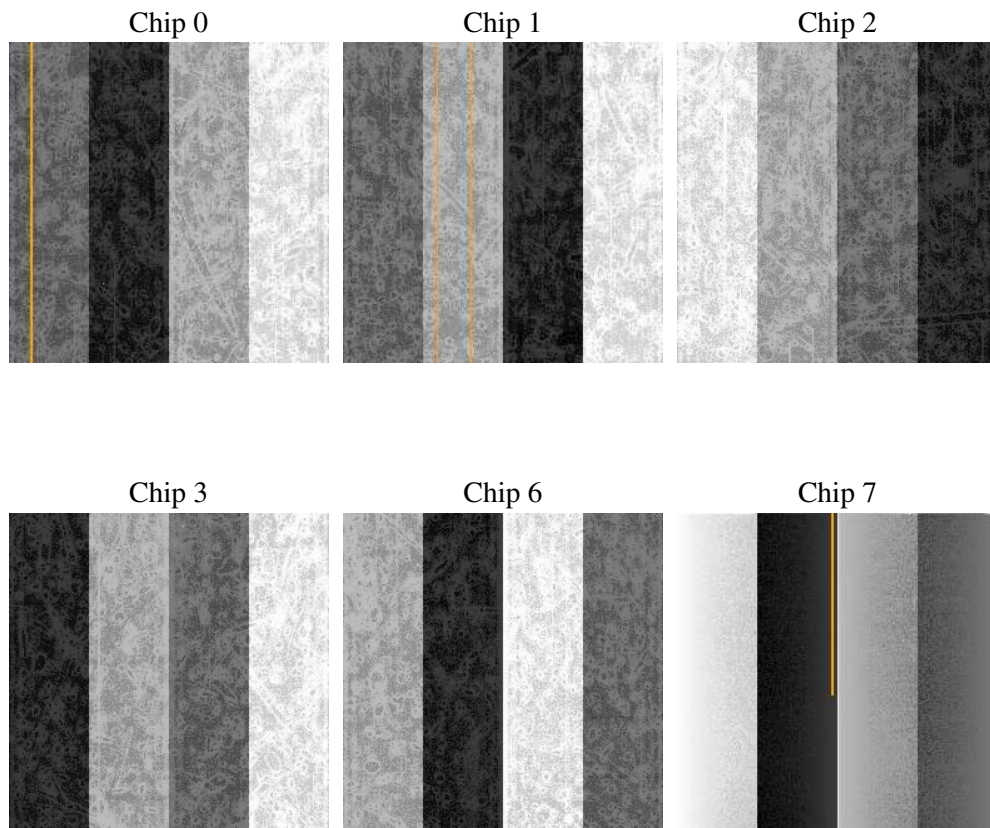
2 OBI

2.1 OBI

2.1.1 Images



2.1.2 Bias



2.1.3 Parameters

obi_num	0
ascdsver	7.6.7.1
caldsver	3.2.1
date	2006-03-10T16:52:09
revision	2

sched_exp_time	0.0
ontime	7804.3560960591
ontime0	7130.2314341366
ontime1	7224.2198335826
ontime2	6896.8803237081
ontime3	7055.6887861192
ontime6	7415.4380402267
ontime7	7804.3560960591
l1events	1406091

2.1.4 Events

	ccd 0	ccd 1	ccd 2	ccd 3	ccd 6	ccd 7
level 1 events	223179	227215	221192	227537	244766	262202
rejected events	50029	50647	52067	52871	55725	58460
rejected %	22%	22%	23%	23%	22%	22%

	ccd 0	ccd 1	ccd 2	ccd 3	ccd 6	ccd 7
grade 0 events	94678	96212	94114	97353	101500	33334
	42%	42%	42%	42%	41%	12%
grade 1 events	556	488	576	665	557	97
	0%	0%	0%	0%	0%	0%
grade 2 events	30185	31616	28952	29902	33216	62329
	13%	13%	13%	13%	13%	23%
grade 3 events	11358	11325	11099	11528	11816	13845
	5%	4%	5%	5%	4%	5%
grade 4 events	11160	11304	11019	11452	11876	13872
	5%	4%	4%	5%	4%	5%
grade 5 events	3133	3226	2897	3333	3580	6755
	1%	1%	1%	1%	1%	2%
grade 6 events	25843	26183	24036	24518	30716	80454
	11%	11%	10%	10%	12%	30%
grade 7 events	46266	46861	48499	48786	51505	51516
	20%	20%	21%	21%	21%	19%

2.2 Compared Parameters

Parameter	Planned	Actual	Parameter	Planned	Actual
Instrument	ACIS	ACIS	Obspar format version number	6	6
Detector	ACIS-012367	ACIS-012367	Obspar file type	PREDICTED	ACTUAL
Grating	NONE	NONE	Obspar update status	NONE	UPDATED
Data mode	FAINT	FAINT	On-chip summing requested	N	N
Observation mode	SECONDARY	SECONDARY	Subarray requested	NONE	NONE
Pointing RA	0	234.9861210097079	Alternating exposures requested	N	N
Pointing Dec	0	15.97471374099009	Primary exposure time	3.2	3.2
Pointing Roll	0.0	209.3145435812757			
SIM focus pos (mm)	-0.782348	-0.7809083437167272			
SIM defocus (mm)	0	0.7524282956875696			
SIM translation stage pos (mm)	-233.592463	250.4635187648994			
SIM translation stage offset (mm)	0	-0.007540371344731511			
Observation start time	234624860.008455	234624858.98345			
Observation start date	2005-06-08T13:34:20	2005-06-08T13:34:18			
Observation end time	234639683.559132	234639682.53413			
Observation end date	2005-06-08T17:41:24	2005-06-08T17:41:22			
Read mode	TIMED	TIMED			

2.3 Aspect

2.4 Star Slots

2.5 FID Slots

A Summary

A.1 Status

V&V Scientist	Jen Lauer
V&V Date (YYYY-MM-DD)	2006.03.10
V&V Edition	1
V&V Disposition and Status	OK
V&V Charge Time	7.80144658

A.2 Comments