

# V&V Reference Report

## L2 ASCDS Version : 8.5.1.1

Observation 5956 - L2 Version 3  
Chandra X-Ray Center

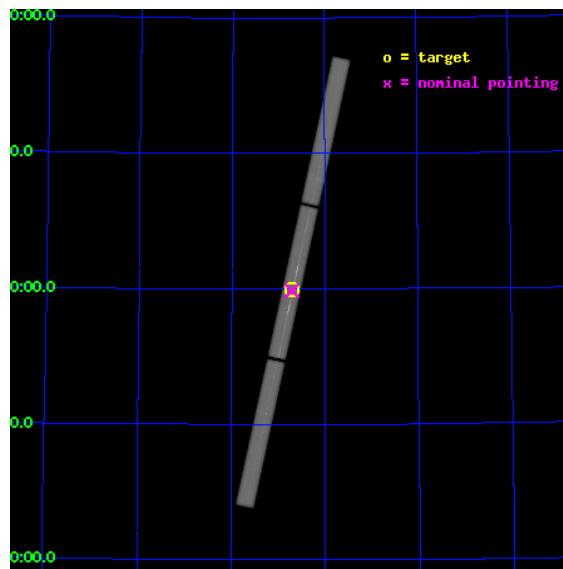
L2 Processing Date : Dec 21 2012

## Contents

<b>1</b>	<b>Front</b>	<b>2</b>
<b>2</b>	<b>OBI</b>	<b>3</b>
2.1	OBI . . . . .	3
2.1.1	Images . . . . .	3
2.1.2	Parameters . . . . .	4
2.1.3	Events . . . . .	4
2.2	Compared Parameters . . . . .	5
2.3	Aspect . . . . .	6
2.4	Star Slots . . . . .	9
2.4.1	Slot 3 . . . . .	9
2.4.2	Slot 4 . . . . .	10
2.4.3	Slot 5 . . . . .	11
2.4.4	Slot 6 . . . . .	12
2.4.5	Slot 7 . . . . .	13
2.5	FID Slots . . . . .	14
2.5.1	Slot 0 . . . . .	14
2.5.2	Slot 1 . . . . .	15
2.5.3	Slot 2 . . . . .	16
<b>3</b>	<b>Gratings</b>	<b>17</b>
3.1	LETG Arm . . . . .	17
<b>A</b>	<b>Summary</b>	<b>19</b>
A.1	Status . . . . .	19
A.2	Comments . . . . .	19

# 1 Front

seq_num	290448	Sequence number
obs_id	5956	Observation id
title	AO6 Calibration Observations of Capella	Proposal title
observer	Dr. CXC Calibration	Principal investigator
object	Capella	Source name
ra_targ	79.17625	Observer's specified target RA [deg]
dec_targ	45.997889	Observer's specified target Dec [deg]
ra_nom	79.177475585493	Nominal RA [deg]
dec_nom	45.993301529175	Nominal Dec [deg]
roll_nom	282.29015007523	Nominal Roll [deg]
revision	3	Processing version of data
ontime	30173.1826199	[s]
livetime	29927.532879082	Ontime multiplied by DTCOR
l2events	2147144	Number of level 2 events

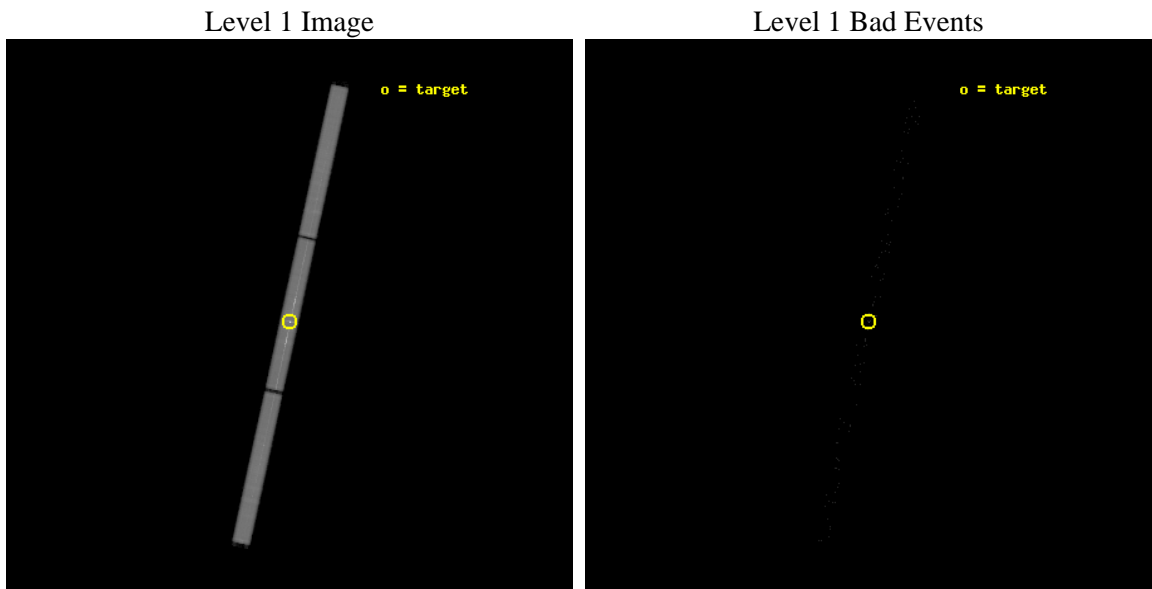




## 2 OBI

### 2.1 OBI

#### 2.1.1 Images



### 2.1.2 Parameters

obi_num	0	Obi number	sched_exp_time	30000.000000	[s] Scheduled observation exposure time
ascdsver	8.5.1.1	Processing system revision	ontime	30173.1826199	[s]
caldsver	4.5.5	&#160	l1events	2843717	Number of level 1 events
date	2012-12-21T16:18:27	Date and time of file creation			
revision	3	Processing version of data			

### 2.1.3 Events

Level 1 Events

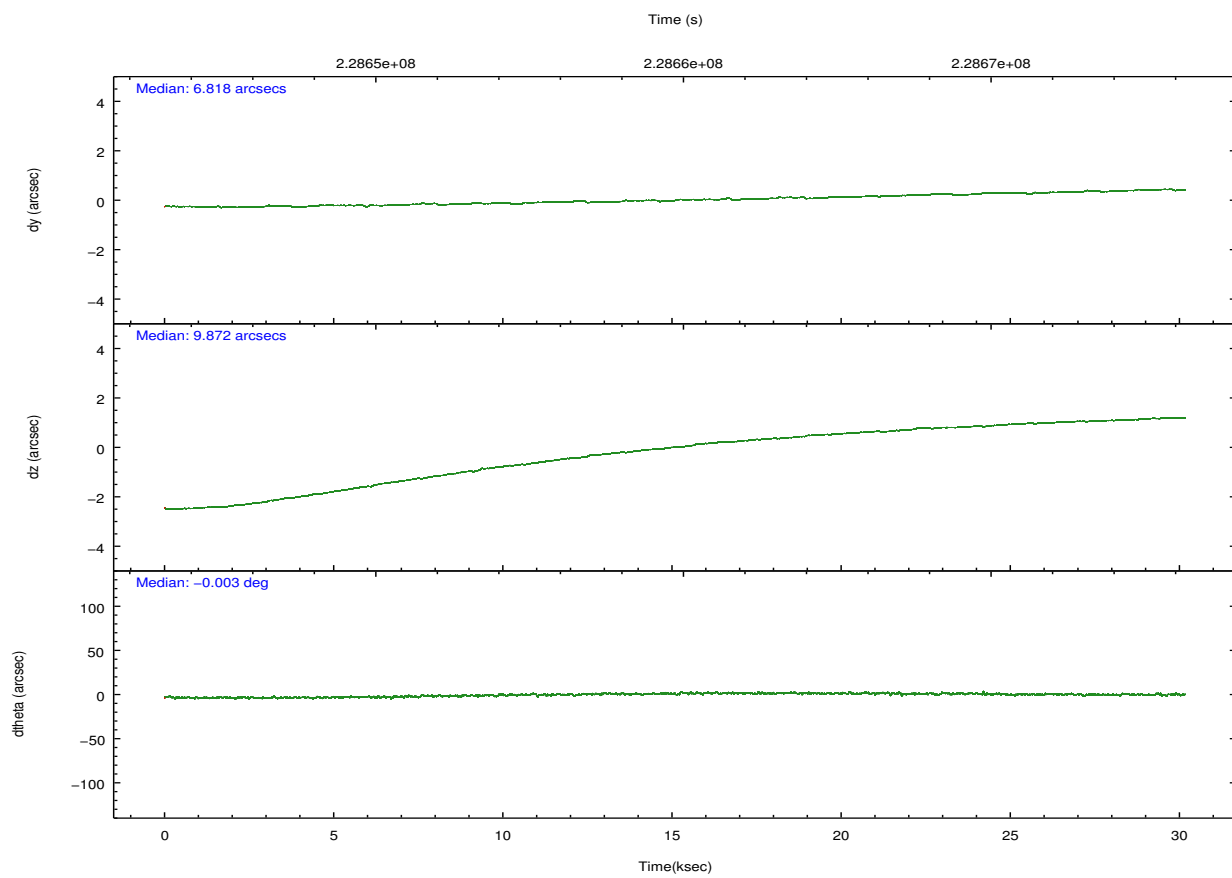
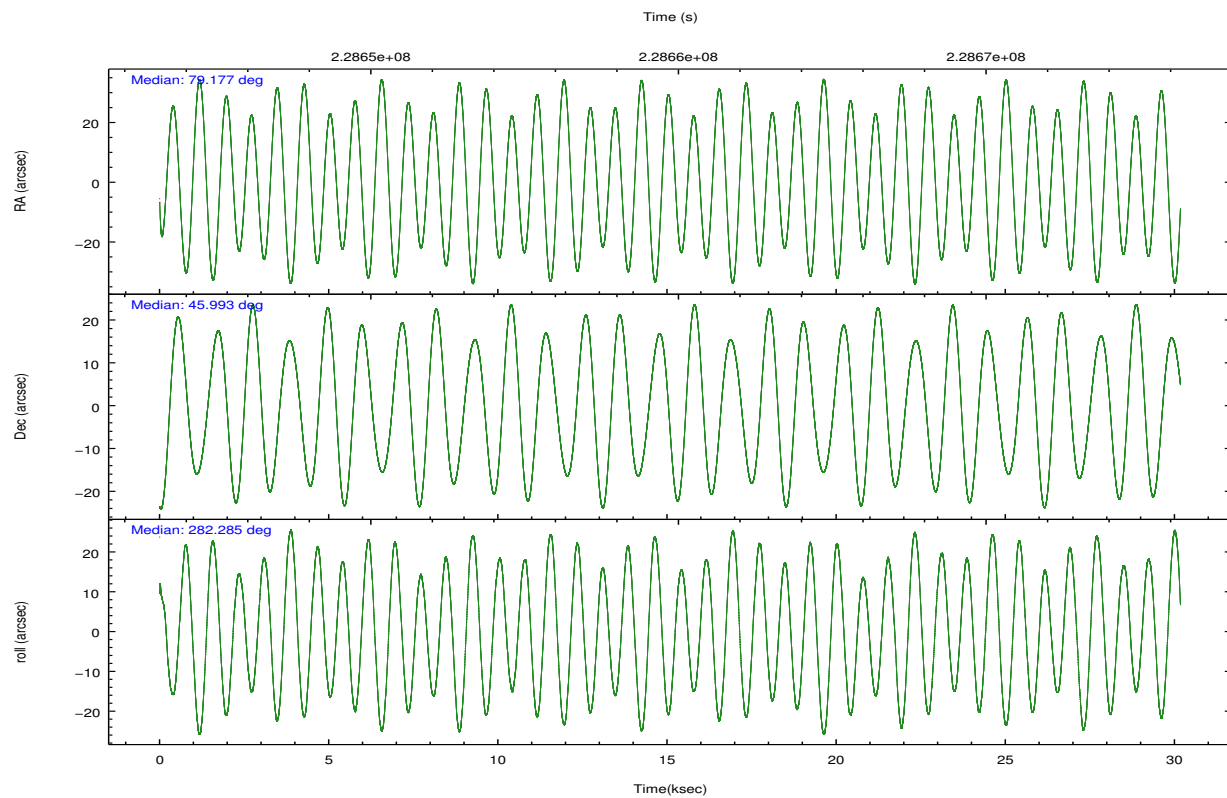
	segment 1	segment 2	segment 3
level 1 events	908929	1041924	892864
rejected events	23512	23506	23333
rejected %	2%	2%	2%

## 2.2 Compared Parameters

Parameter	Planned	Actual
Instrument	HRC	HRC
Detector	HRC-S	HRC-S
Grating	LETG	LETG
Data mode	OBSERVING	OBSERVING
Observation mode	POINTING	POINTING
[deg] Pointing RA	79.148309	79.17747558549335
[deg] Pointing Dec	46.013459	45.99330152917477
[deg] Pointing Roll	282.243796	282.2901500752328
[s] Window start time (MET)	227232064.184000	227232064.184000
[s] Window stop time (MET)	241833664.184000	241833664.184000
[mm] SIM focus pos	-1.429586	-1.428180813131781
[mm] SIM defocus	0.1037507710433287	0.1051558262725154
[mm] SIM translation stage pos	250.455976	250.466033080201
[mm] SIM translation stage offset	0	-0.01005468664627074
[s] Observation start time (MET)	228644820.184000	228643793.06118
Observation start date	2005-03-31T08:25:56	2005-03-31T08:09:53
[s] Observation end time (MET)	228674820.184000	228675798.17514
Observation end date	2005-03-31T16:45:56	2005-03-31T17:03:18

Parameter	Planned	Actual
Obspar format version number	7	7
Obspar file type	PREDICTED	ACTUAL
Obspar update status	NONE	UPDATED

## 2.3 Aspect

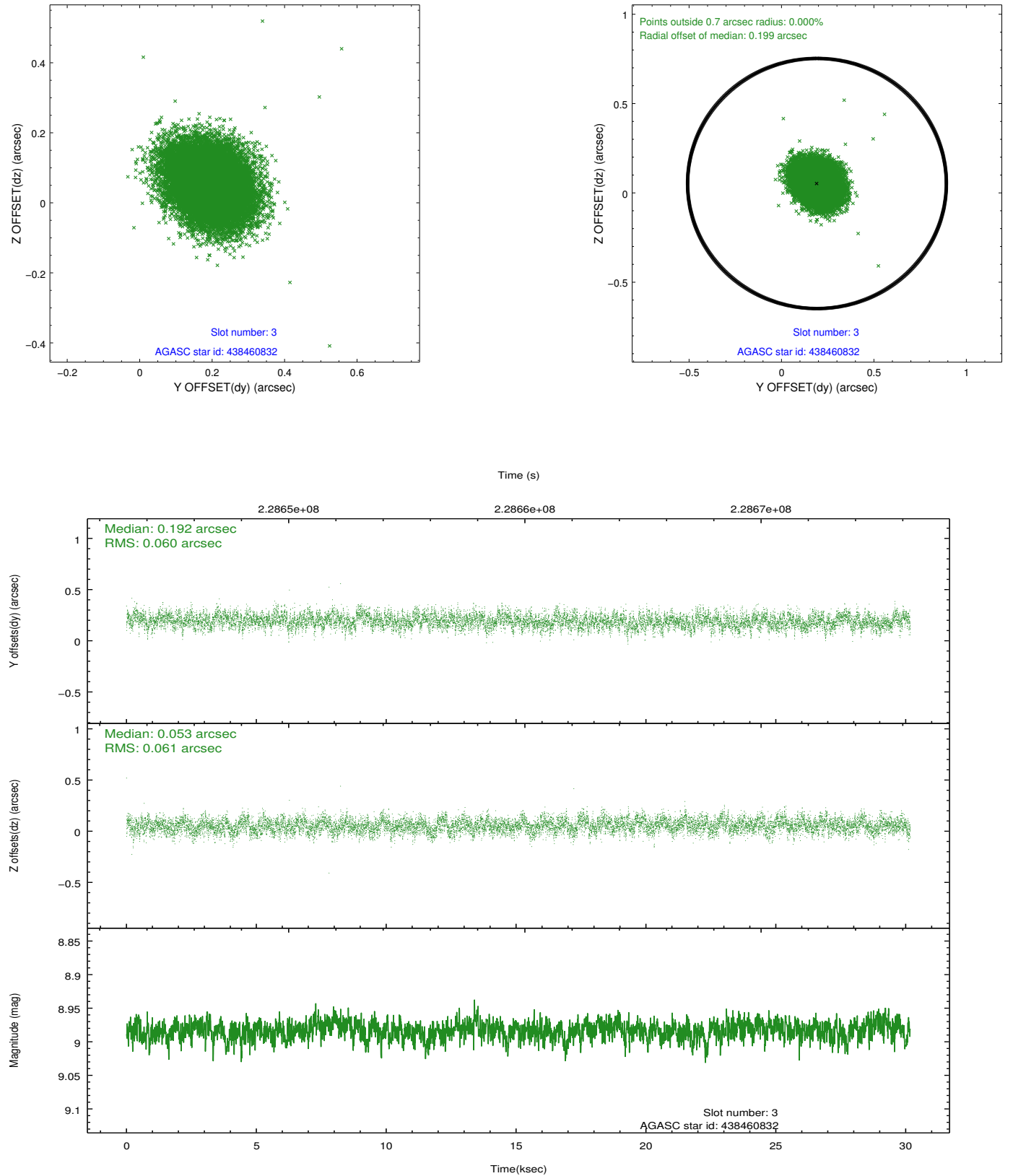


### Slot Statistics

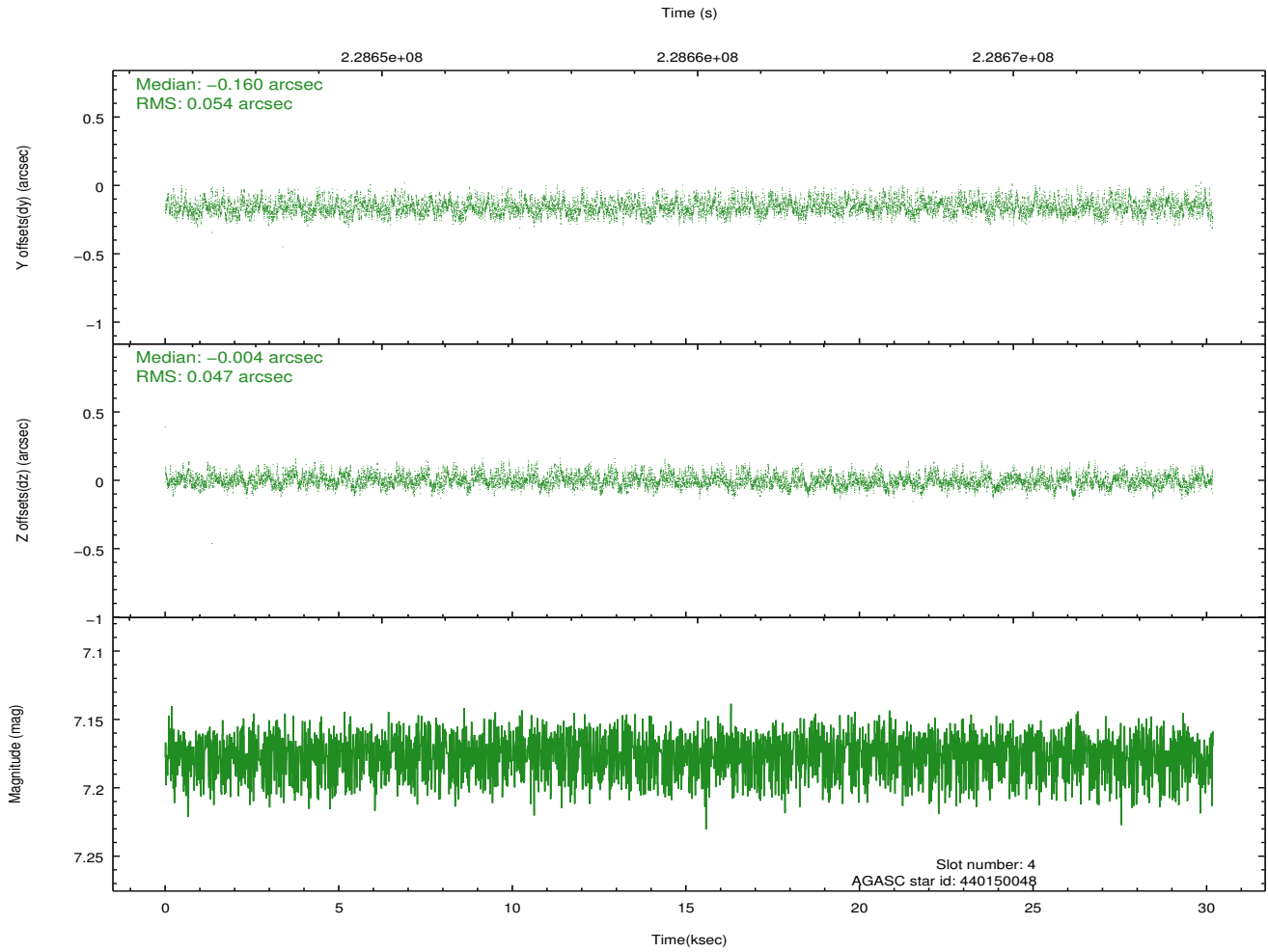
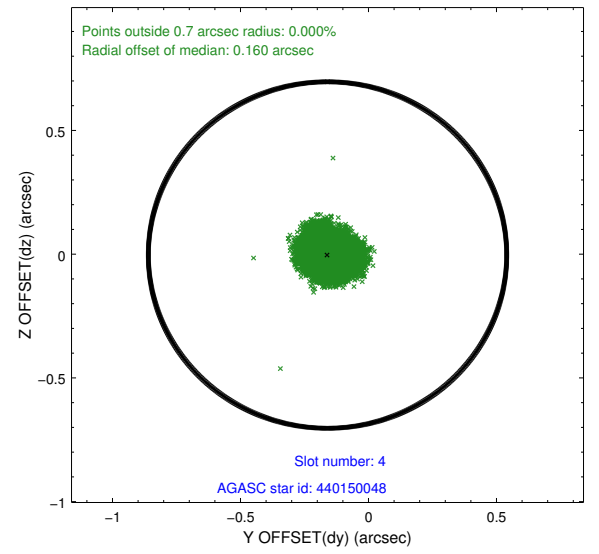
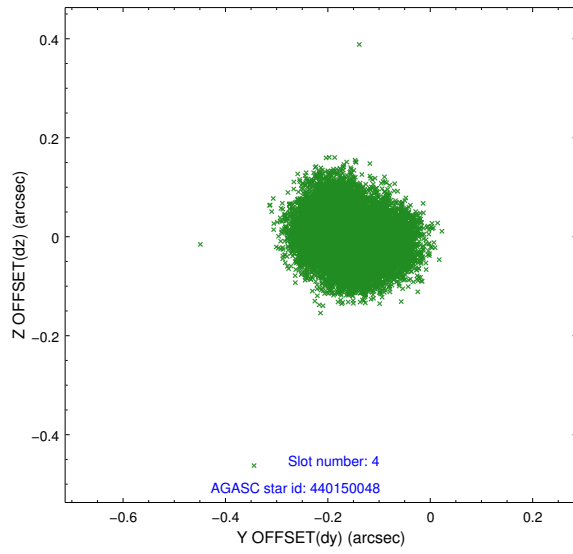
slot	status	id	mag	n_pts	med_dy	med_dz	dr1	dr2	ra	dec	mean_y	mean_z
0	FID	HRC-S-1	6.99	7359	0.112	-0.160	0.026	0.059	0.000000	0.000000	-1161.00	-458.25
1	FID	HRC-S-2	6.98	7360	0.175	-0.112	0.009	0.015	0.000000	0.000000	1238.58	-450.91
2	FID	HRC-S-3	7.00	7360	0.103	-0.029	0.026	0.061	0.000000	0.000000	-1163.56	571.33
3	GUIDE	438460832	8.98	14708	0.192	0.053	0.091	0.146	78.414614	45.554782	1214.16	-2155.32
4	GUIDE	440150048	7.18	14719	-0.160	-0.004	0.077	0.118	79.112838	46.416060	-1434.77	221.40
5	GUIDE	440163960	8.88	14716	0.187	0.037	0.083	0.133	79.298370	45.827072	735.64	226.22
6	GUIDE	440164960	8.30	14716	0.049	-0.036	0.065	0.107	79.132526	46.140947	-456.06	59.13
7	GUIDE	438437960	8.50	14653	-0.272	-0.053	0.082	0.133	78.069023	46.438843	-2082.06	-2288.16

## 2.4 Star Slots

### 2.4.1 Slot 3

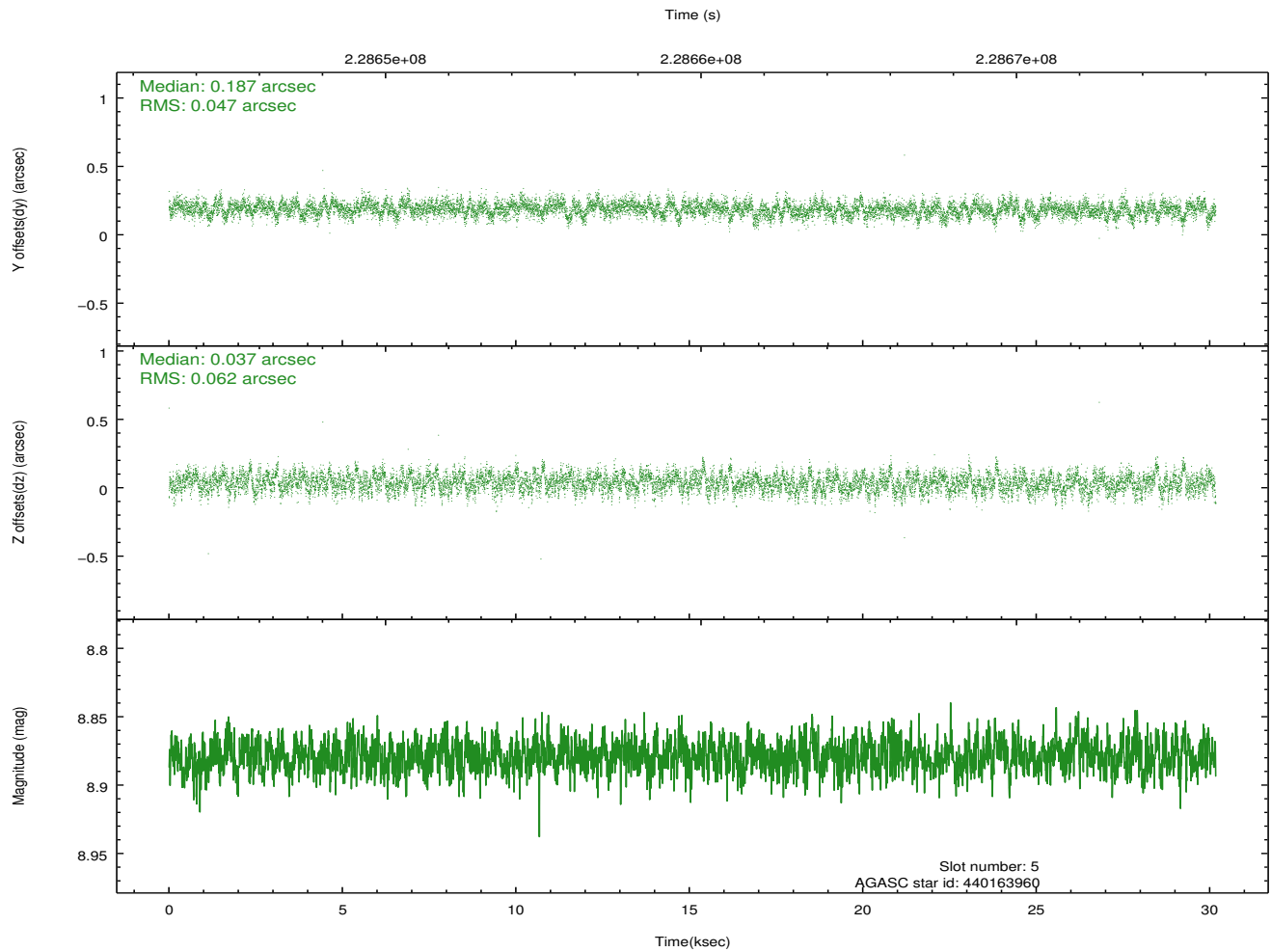
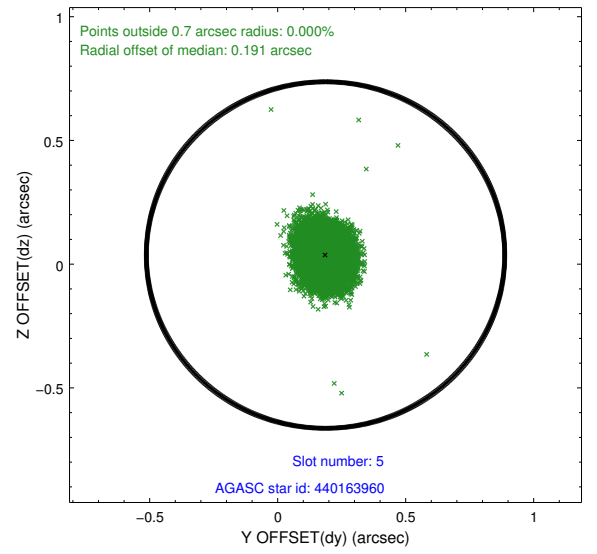
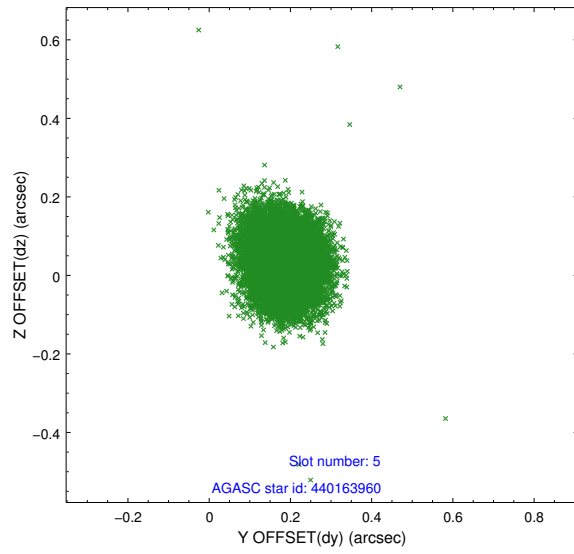


## 2.4.2 Slot 4

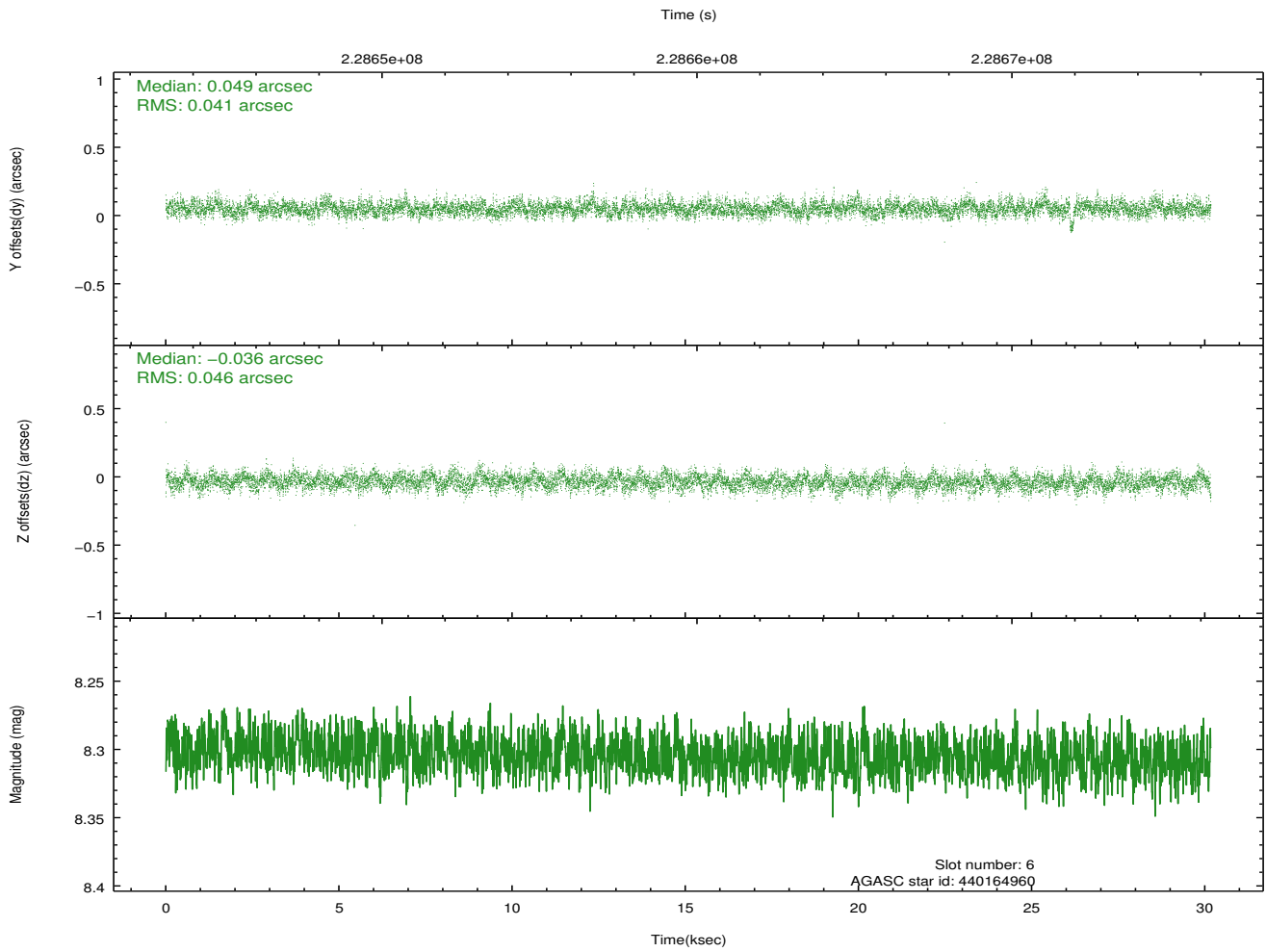
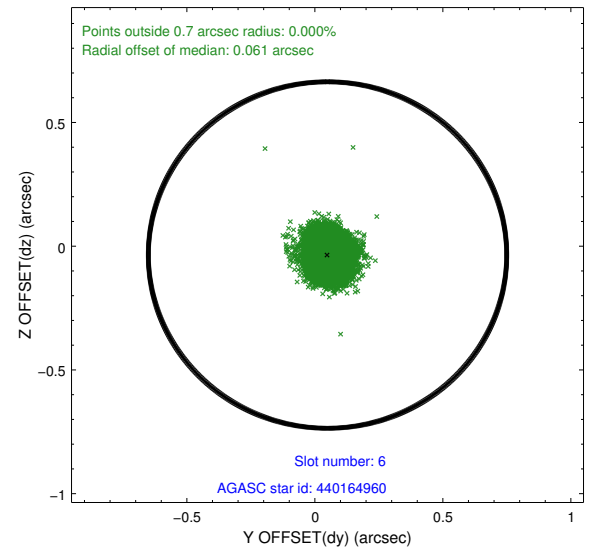
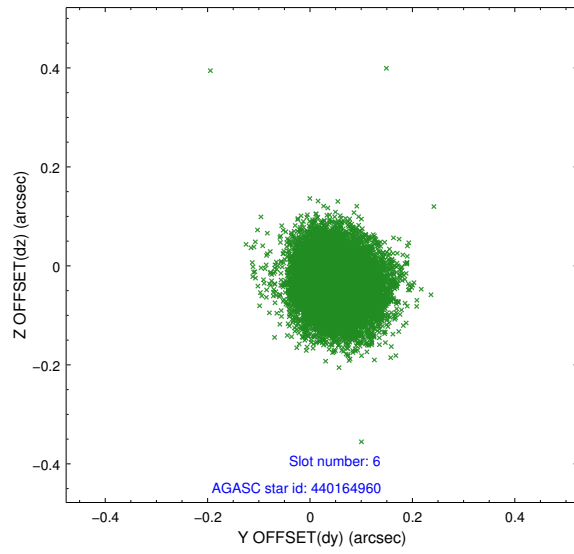




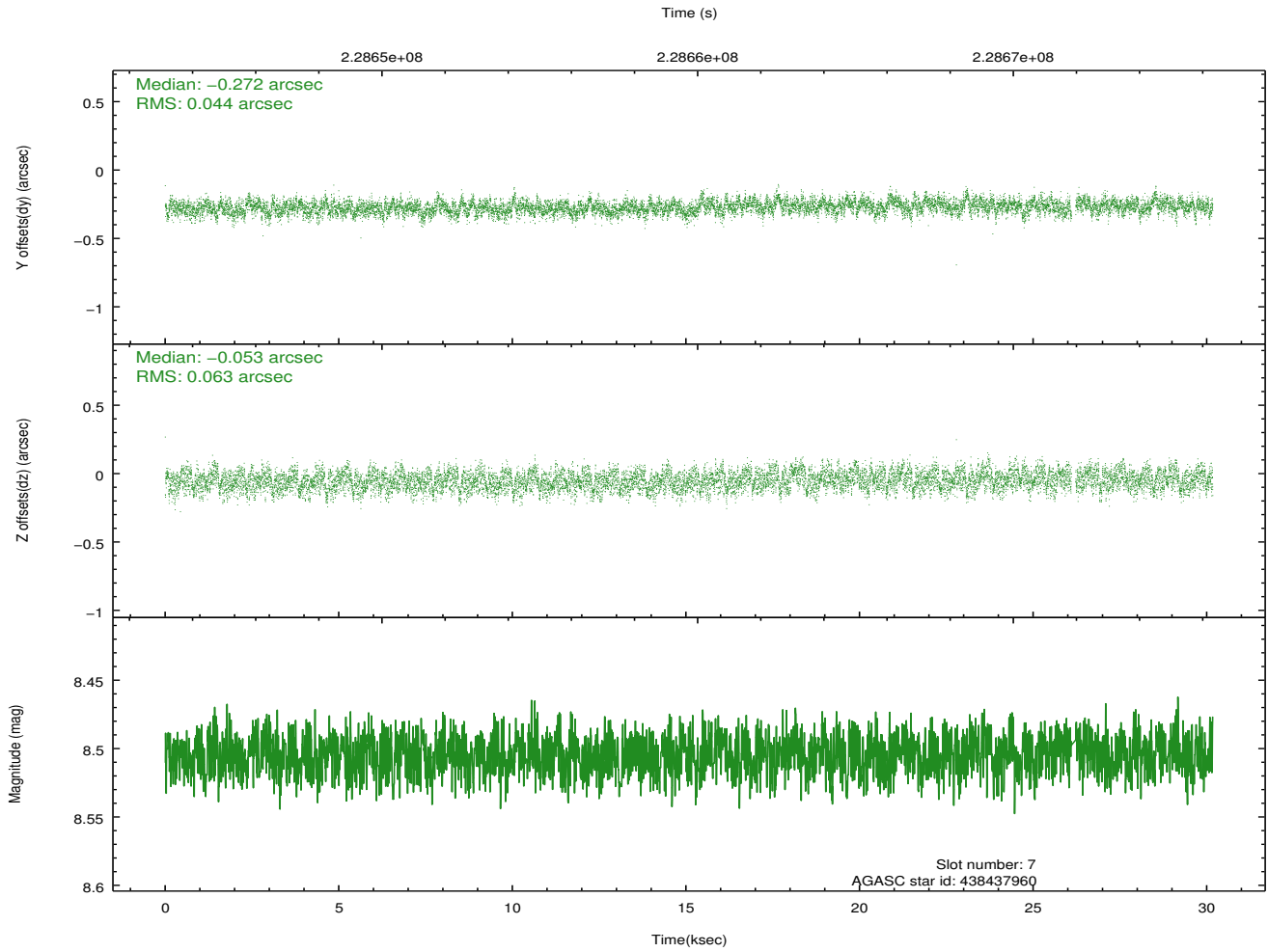
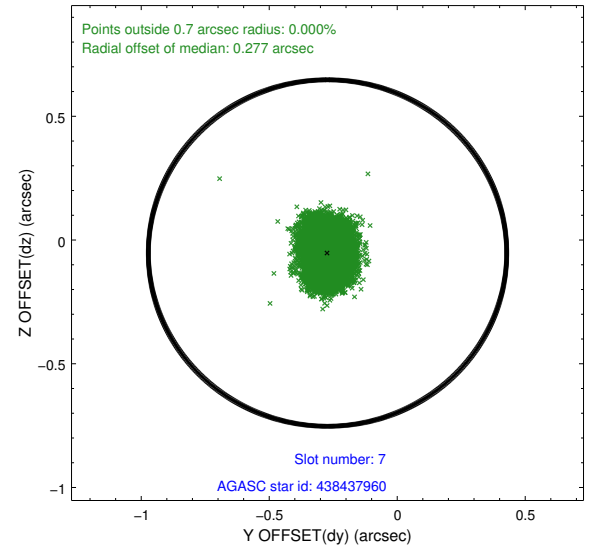
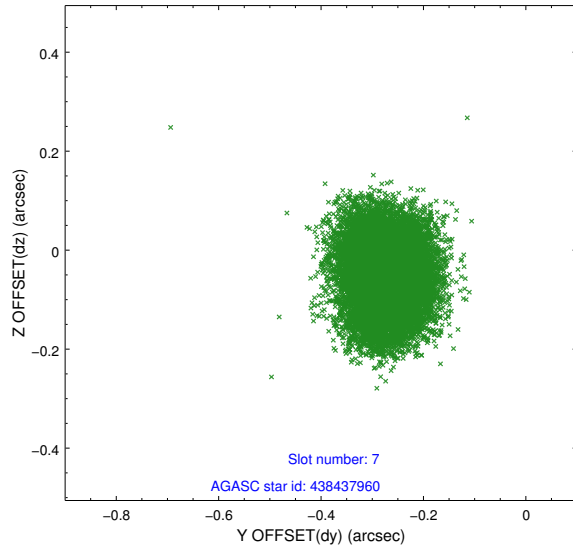
### 2.4.3 Slot 5



## 2.4.4 Slot 6

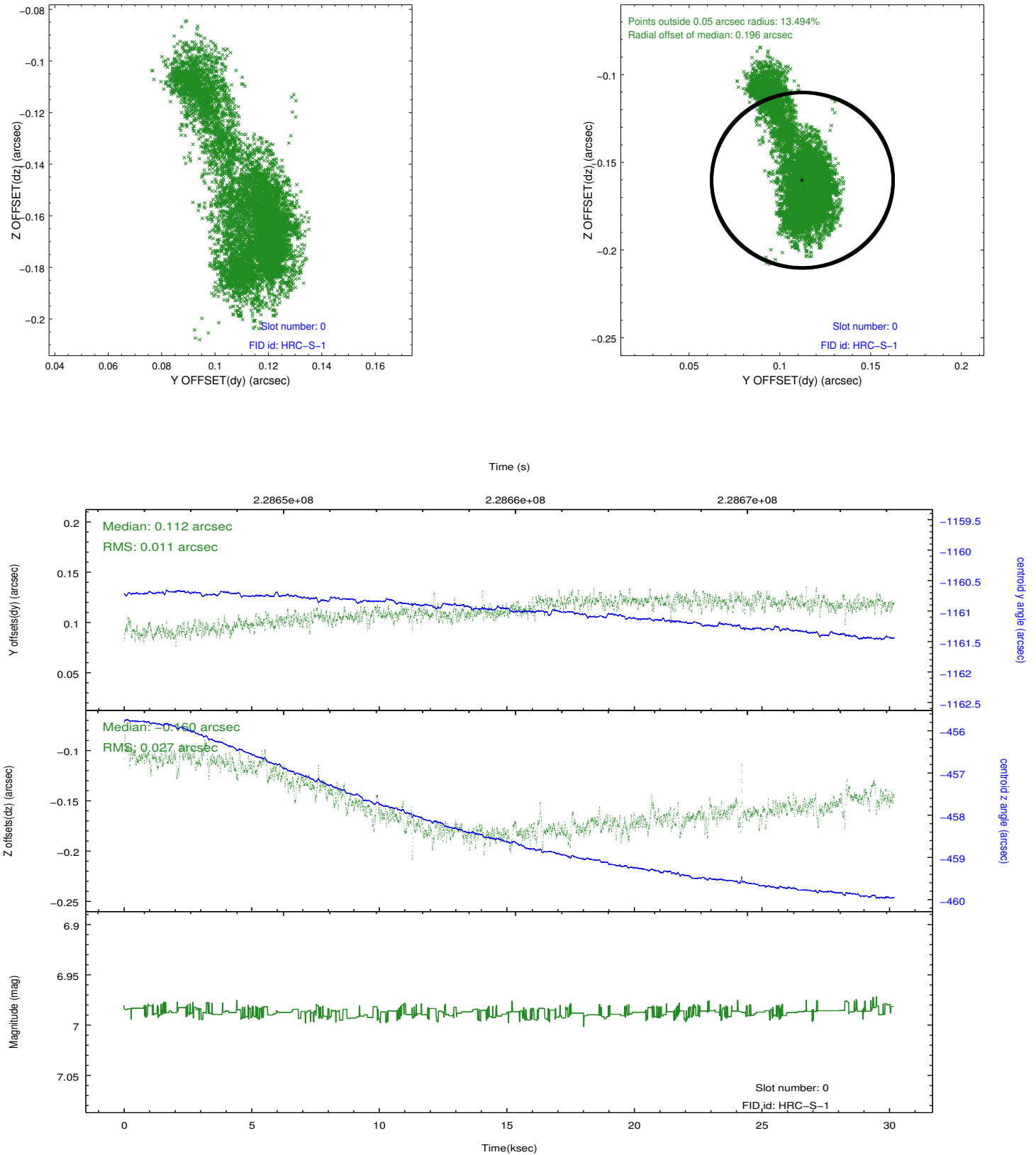


## 2.4.5 Slot 7

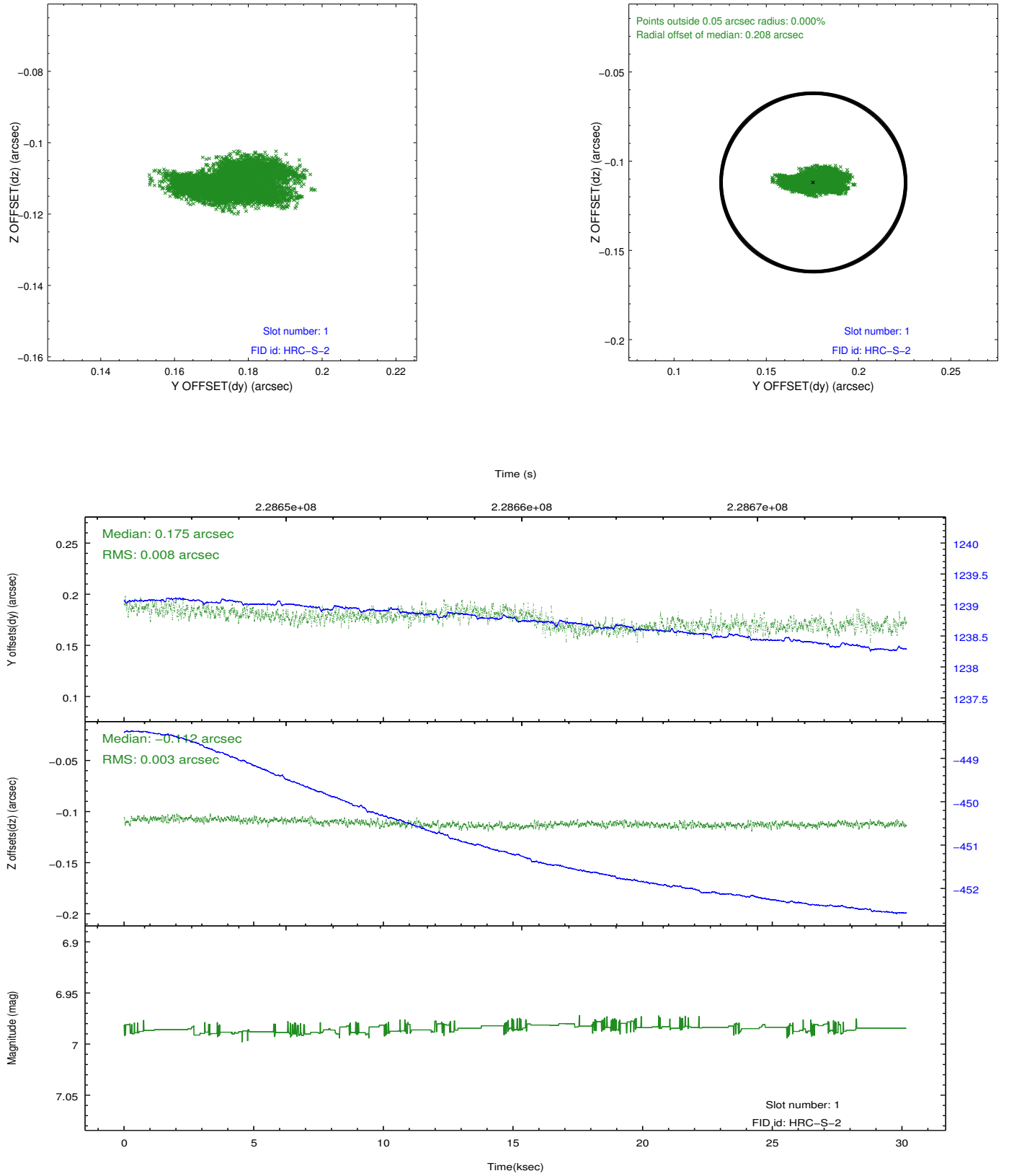


## 2.5 FID Slots

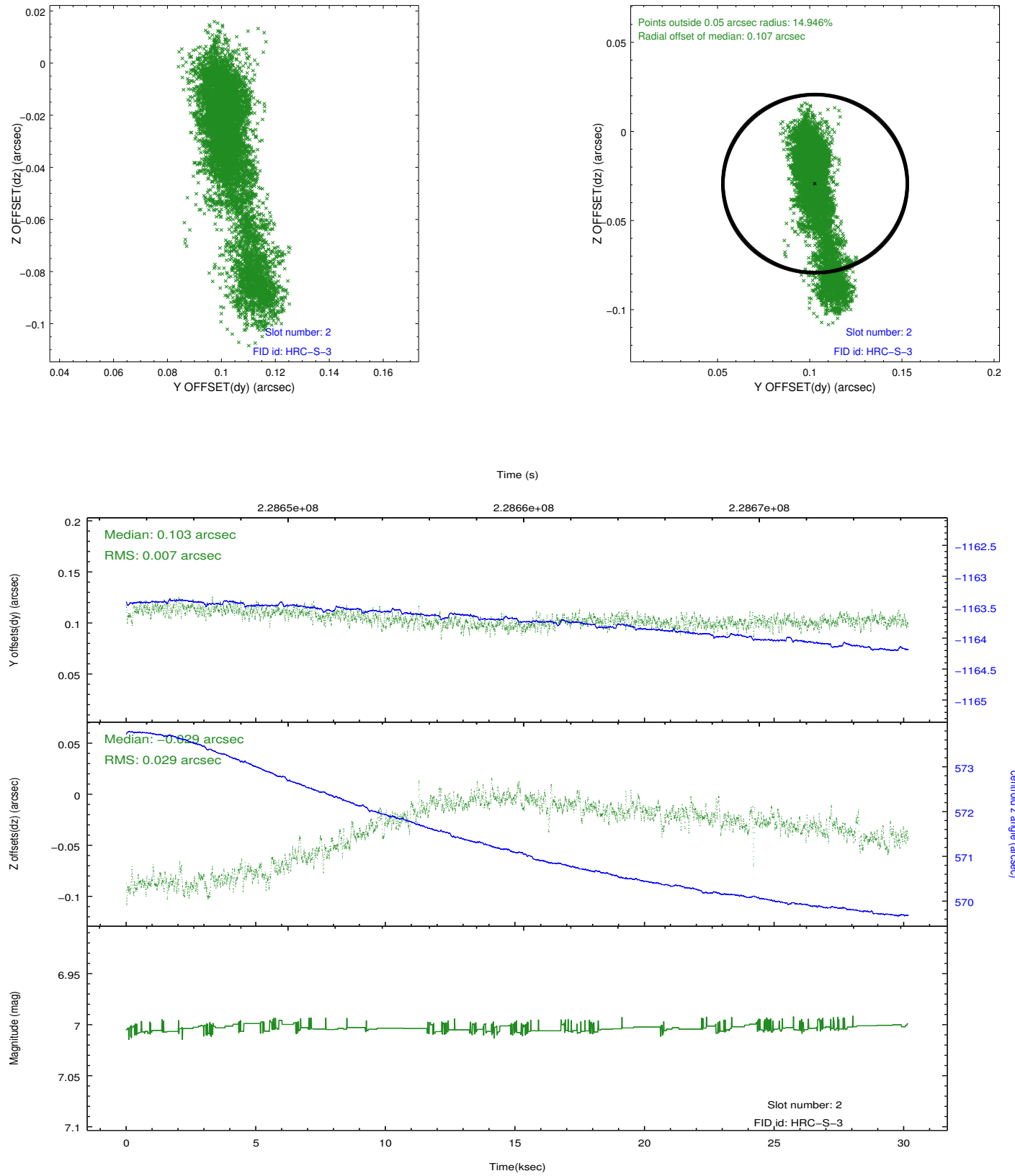
### 2.5.1 Slot 0



## 2.5.2 Slot 1

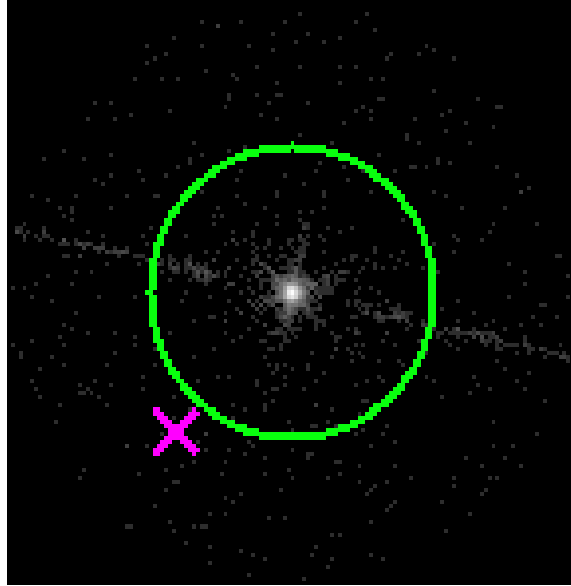


### 2.5.3 Slot 2

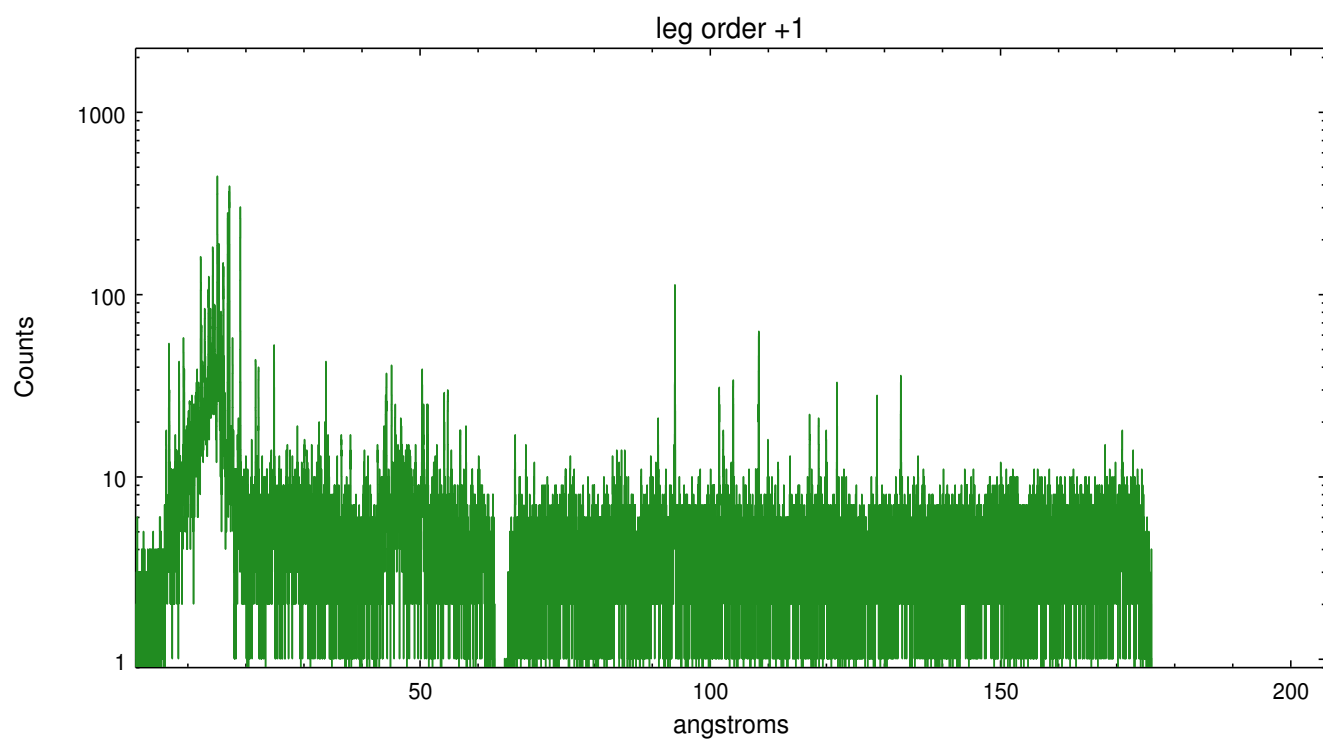
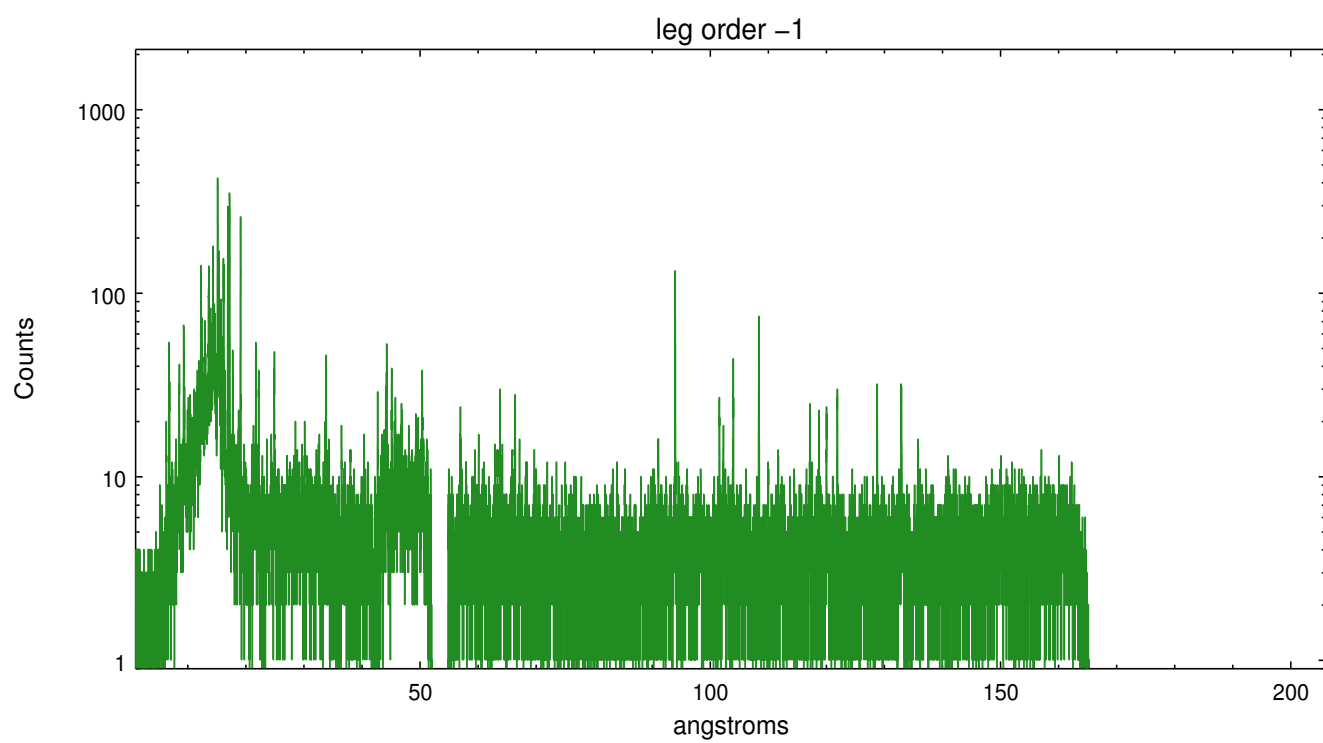


## 3 Gratings

### 3.1 LETG Arm



LETG Zero Order





## A Summary

### A.1 Status

V&V Scientist	Joy Nichols
V&V Date (YYYY-MM-DD)	2013.01.16
V&V Edition	1
V&V Disposition and Status	OK
V&V Charge Time	30.17318

### A.2 Comments

Aspect review determined that large SIM dz drift is just a thermal issue.