

V&V Reference Report

L2 ASCDS Version : 7.6.7.1

Observation 5956 - L2 Version 002
Chandra X-Ray Center

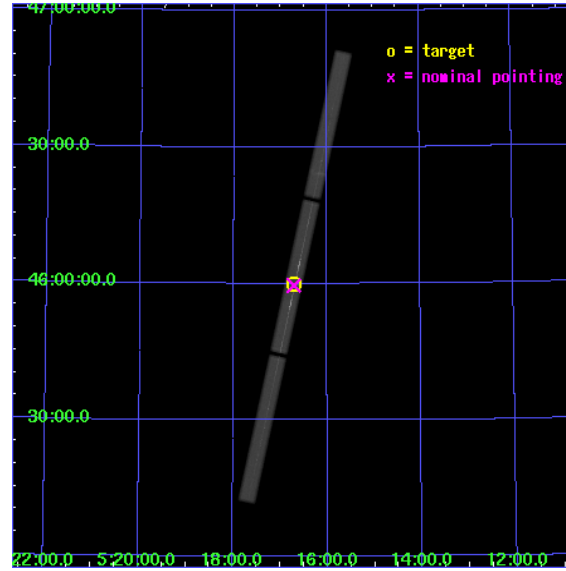
L2 Processing Date : Mar 17 2006

Contents

1	Front	2
2	OBI	3
2.1	OBI	3
2.1.1	Images	3
2.1.2	Parameters	4
2.1.3	Events	4
2.2	Compared Parameters	5
2.3	Aspect	6
2.4	Star Slots	9
2.4.1	Slot 3	9
2.4.2	Slot 4	10
2.4.3	Slot 5	11
2.4.4	Slot 6	12
2.4.5	Slot 7	13
2.5	FID Slots	14
2.5.1	Slot 0	14
2.5.2	Slot 1	15
2.5.3	Slot 2	16
3	Gratings	17
3.1	LETG Arm	17
A	Summary	19
A.1	Status	19
A.2	Comments	19

1 Front

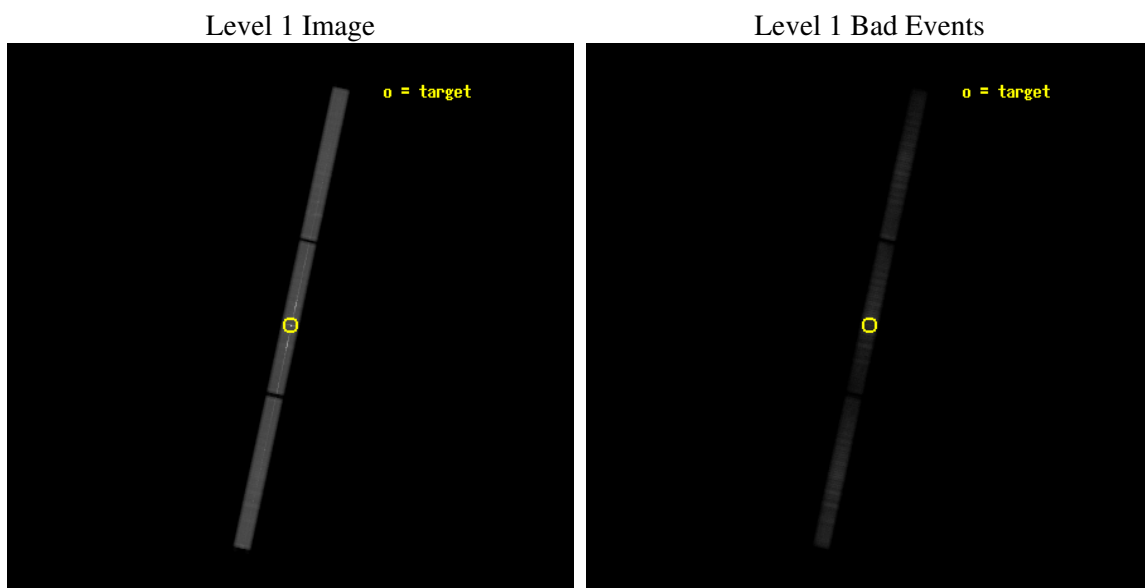
seq_num	290448
obs_id	5956
title	AO6 Calibration Observations of Capella
observer	Dr. CXC Calibration
object	Capella
ra_targ	79.17625
dec_targ	45.997889
ra_nom	79.177467154375
dec_nom	45.993328681464
roll_nom	282.29015613226
revision	2
ontime	30173.1826199
livetime	29955.852660434
l2events	2023978



2 OBI

2.1 OBI

2.1.1 Images



2.1.2 Parameters

obi_num	0
ascdsver	7.6.7.1
caldbver	3.2.1
date	2006-03-17T21:02:22
revision	2

sched_exp_time	30000.000000
ontime	30174.207619965
l1events	2843717

2.1.3 Events

Level 1 Events

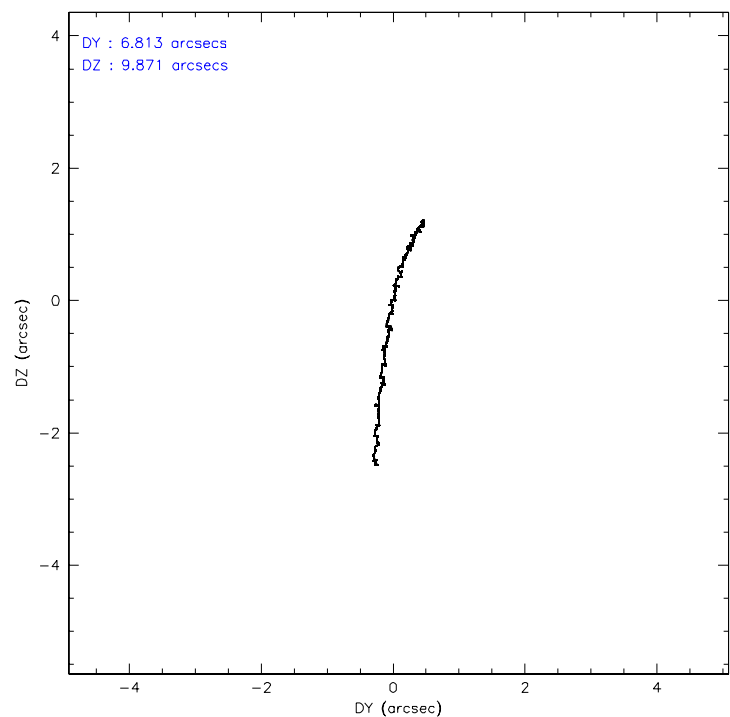
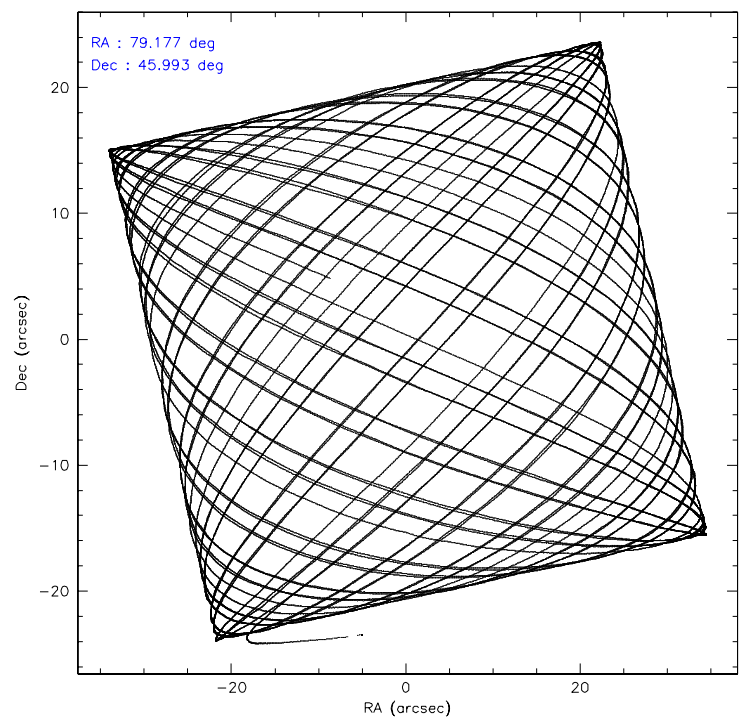
	segment 1	segment 2	segment 3
level 1 events	908929	1041924	892864
rejected events	178154	194872	214490
rejected %	19%	18%	24%

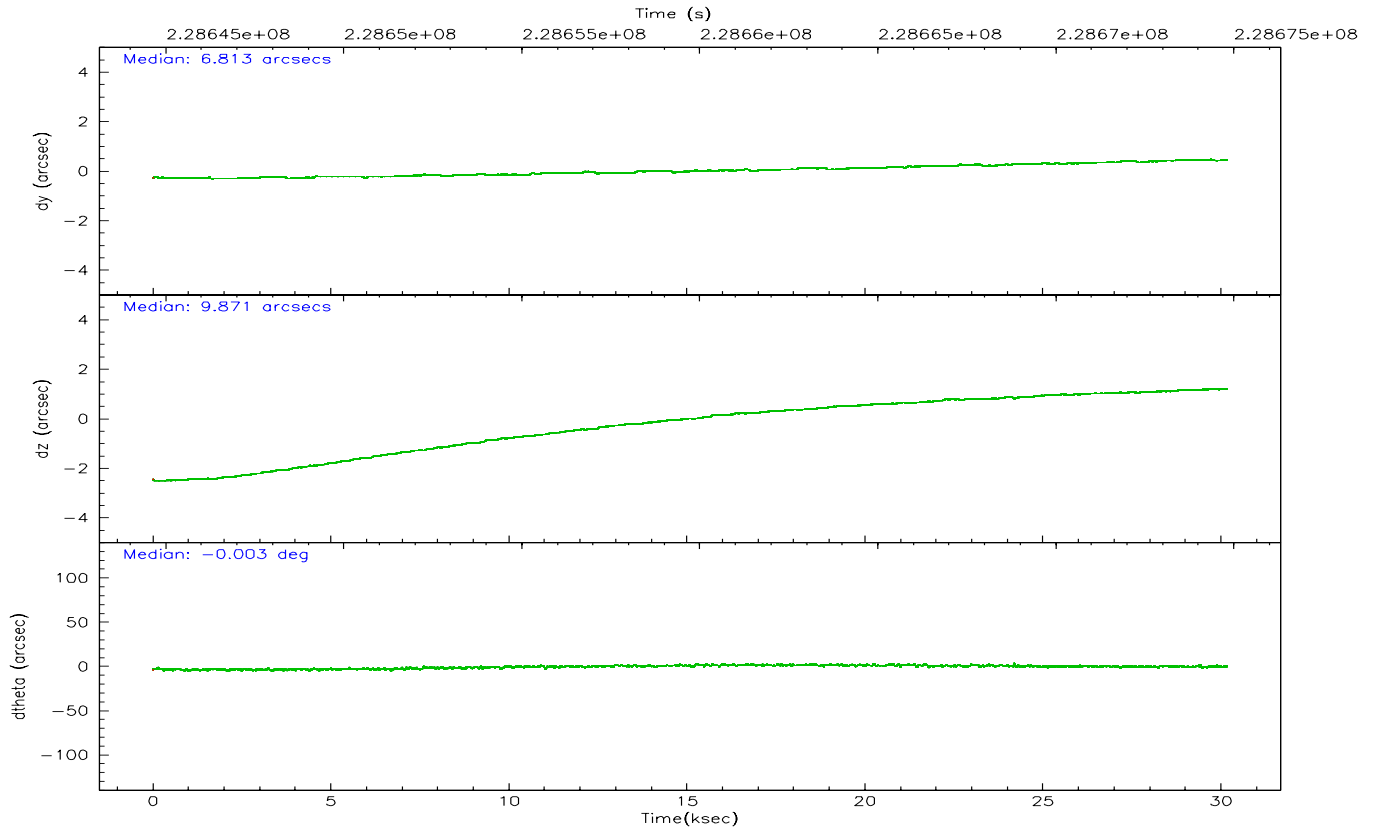
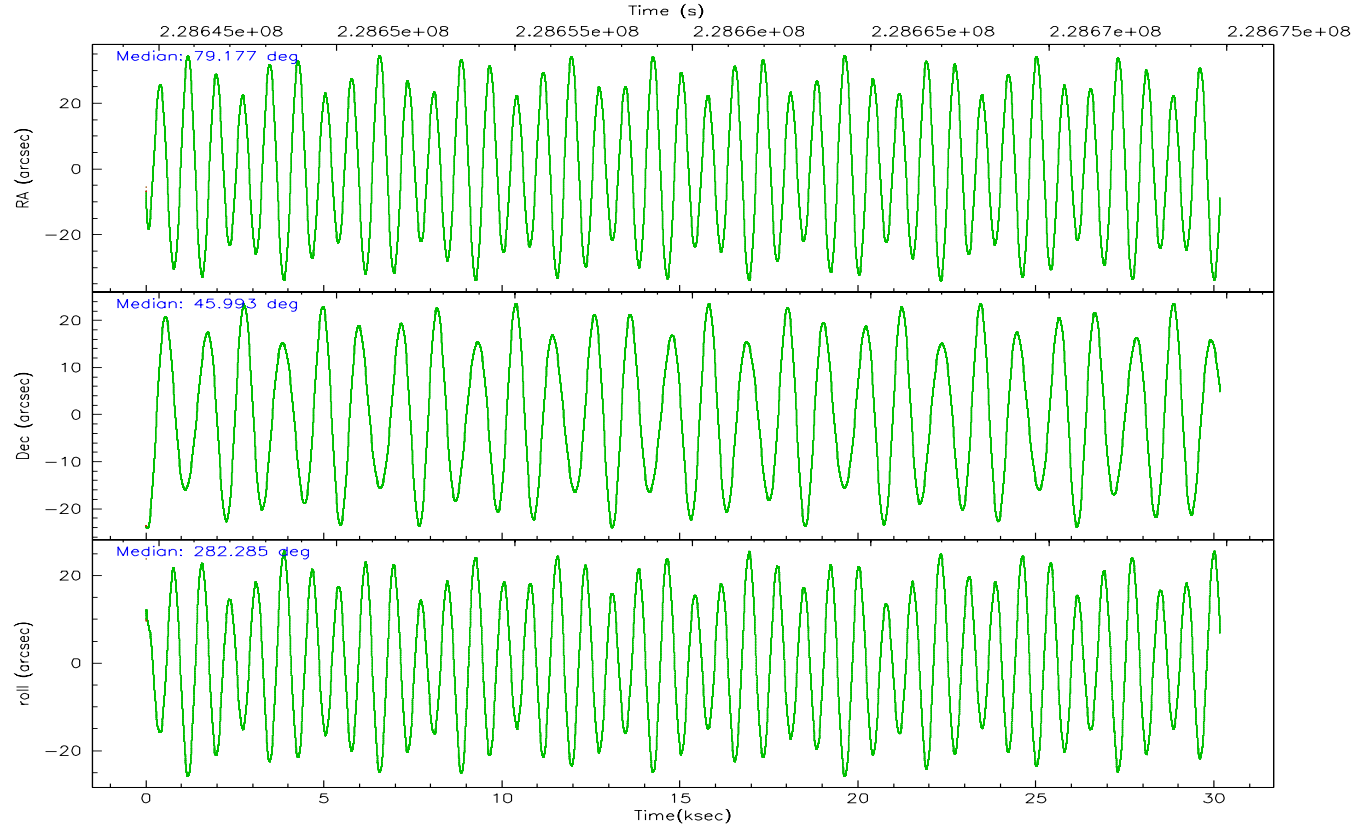
2.2 Compared Parameters

Parameter	Planned	Actual
Instrument	HRC	HRC
Detector	HRC-S	HRC-S
Grating	LETG	LETG
Data mode	OBSERVING	OBSERVING
Observation mode	POINTING	POINTING
Pointing RA	79.148309	79.17746715437531
Pointing Dec	46.013459	45.99332868146404
Pointing Roll	282.243796	282.2901561322613
Window start time	227232064.184000	227232064.184000
Window stop time	241833664.184000	241833664.184000
SIM focus pos (mm)	-1.429586	-1.428180813131781
SIM defocus (mm)	0.1037507710433287	0.1051558262725154
SIM translation stage pos (mm)	250.455976	250.466033080201
SIM translation stage offset (mm)	0	-0.01005468664627074
Observation start time	228644820.184000	228643793.06118
Observation start date	2005-03-31T08:25:56	2005-03-31T08:09:53
Observation end time	228674820.184000	228675798.17514
Observation end date	2005-03-31T16:45:56	2005-03-31T17:03:18

Parameter	Planned	Actual
Obspar format version number	6	6
Obspar file type	PREDICTED	ACTUAL
Obspar update status	NONE	UPDATED

2.3 Aspect



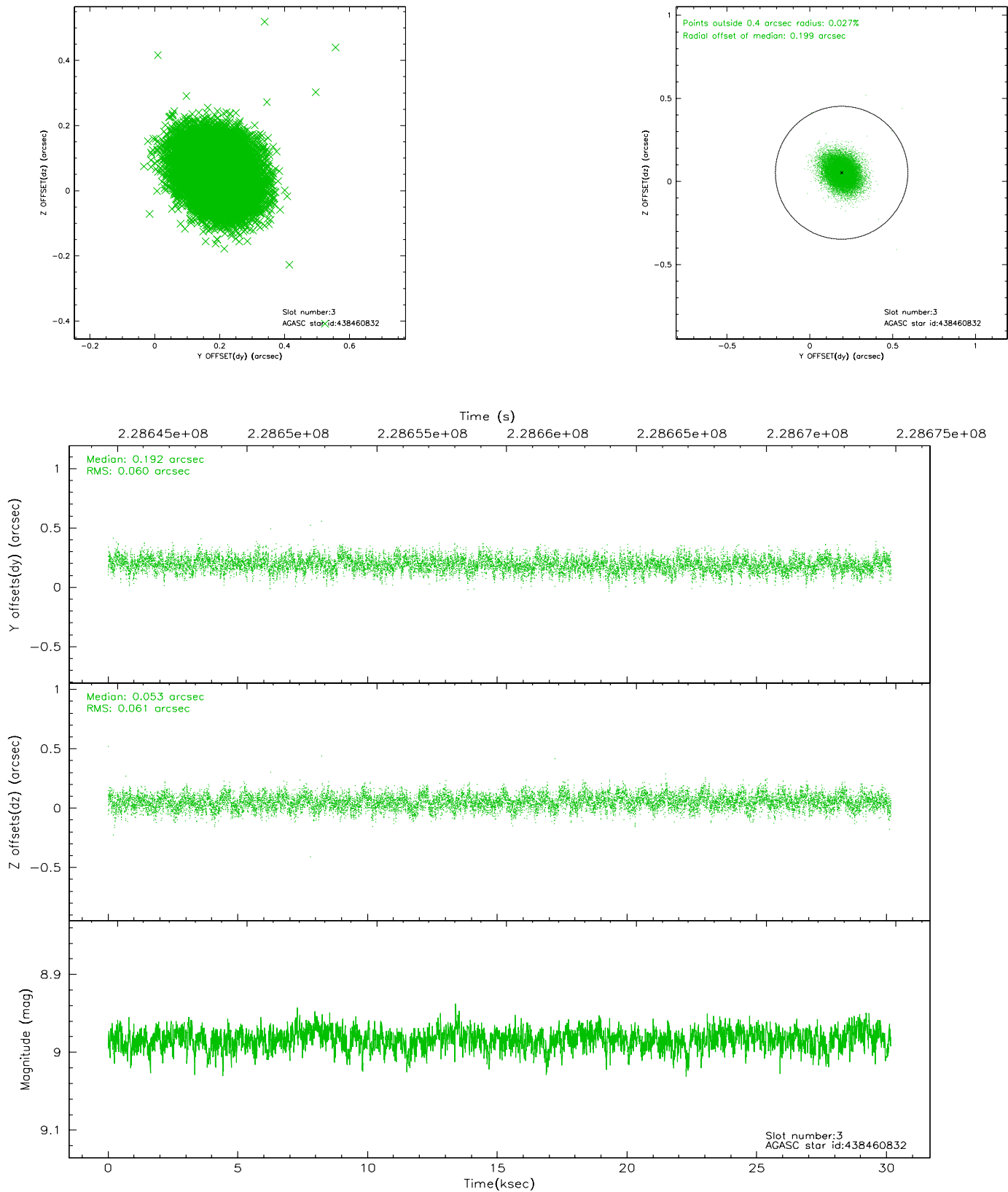


Slot Statistics

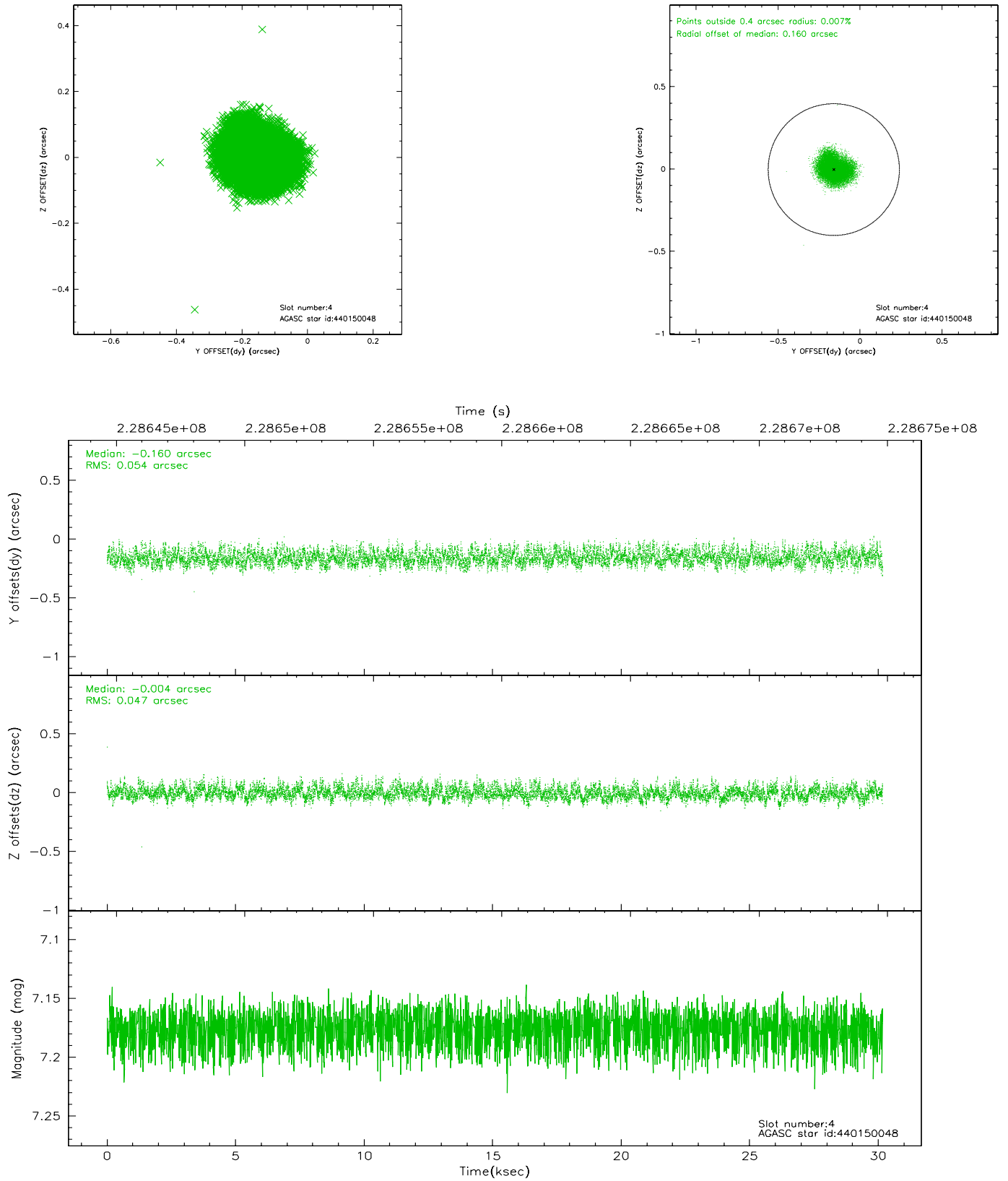
slot	status	id	mag	n_pts	med_dy	med_dz	dr1	dr2	ra	dec	mean_y	mean_z
0	FID	HRC-S-1	6.99	7359	0.112	-0.160	0.026	0.059	0.000000	0.000000	-1161.00	-458.25
1	FID	HRC-S-2	6.98	7360	0.175	-0.112	0.009	0.015	0.000000	0.000000	1238.58	-450.91
2	FID	HRC-S-3	7.00	7360	0.103	-0.029	0.026	0.061	0.000000	0.000000	-1163.56	571.33
3	GUIDE	438460832	8.98	14708	0.192	0.053	0.091	0.146	78.414614	45.554782	1214.16	-2155.32
4	GUIDE	440150048	7.18	14719	-0.160	-0.004	0.077	0.118	79.112838	46.416060	-1434.77	221.40
5	GUIDE	440163960	8.88	14716	0.187	0.037	0.083	0.133	79.298370	45.827072	735.64	226.22
6	GUIDE	440164960	8.30	14717	0.049	-0.036	0.065	0.107	79.132526	46.140947	-456.06	59.13
7	GUIDE	438437960	8.50	14654	-0.272	-0.053	0.082	0.133	78.069023	46.438843	-2082.06	-2288.16

2.4 Star Slots

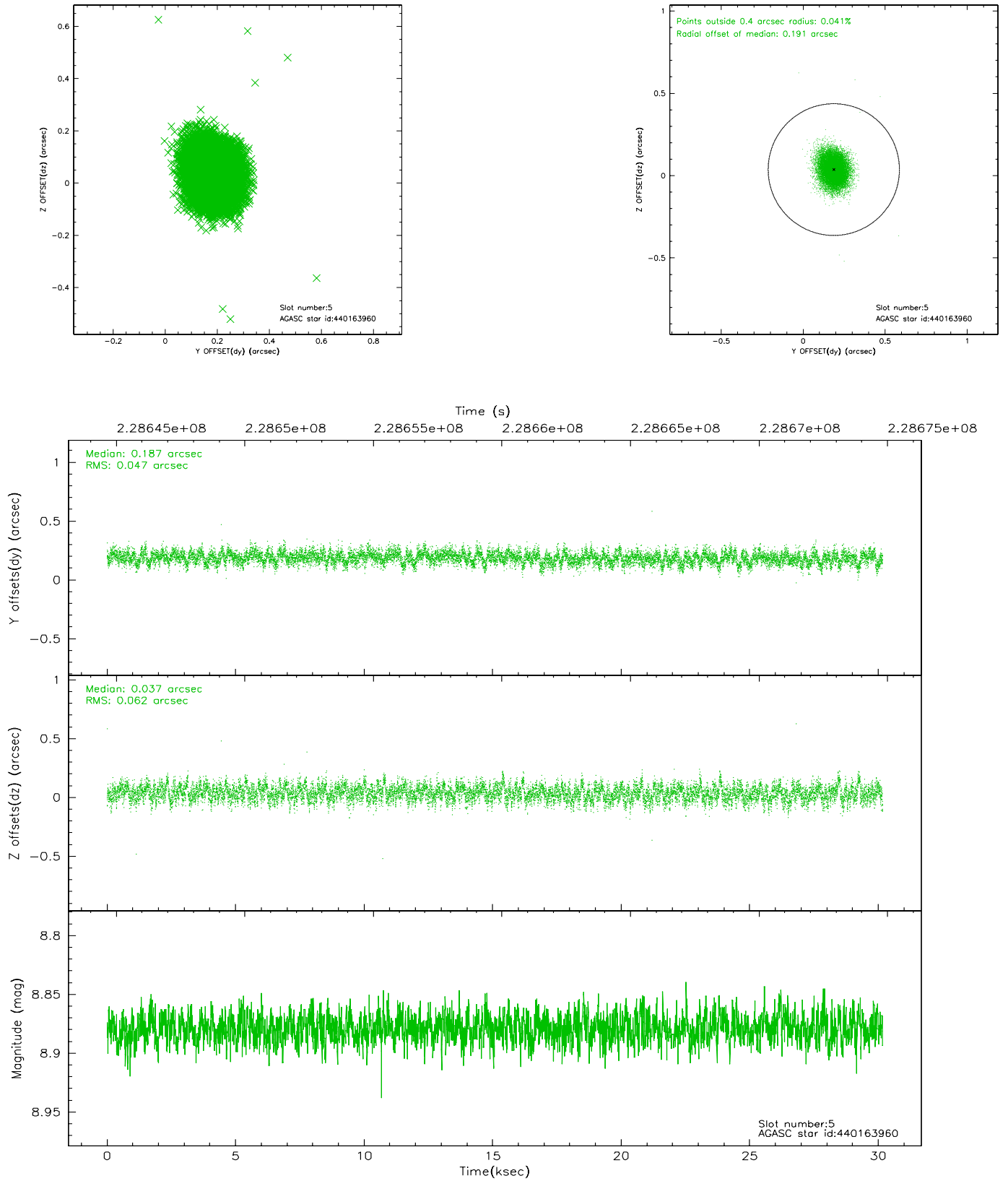
2.4.1 Slot 3



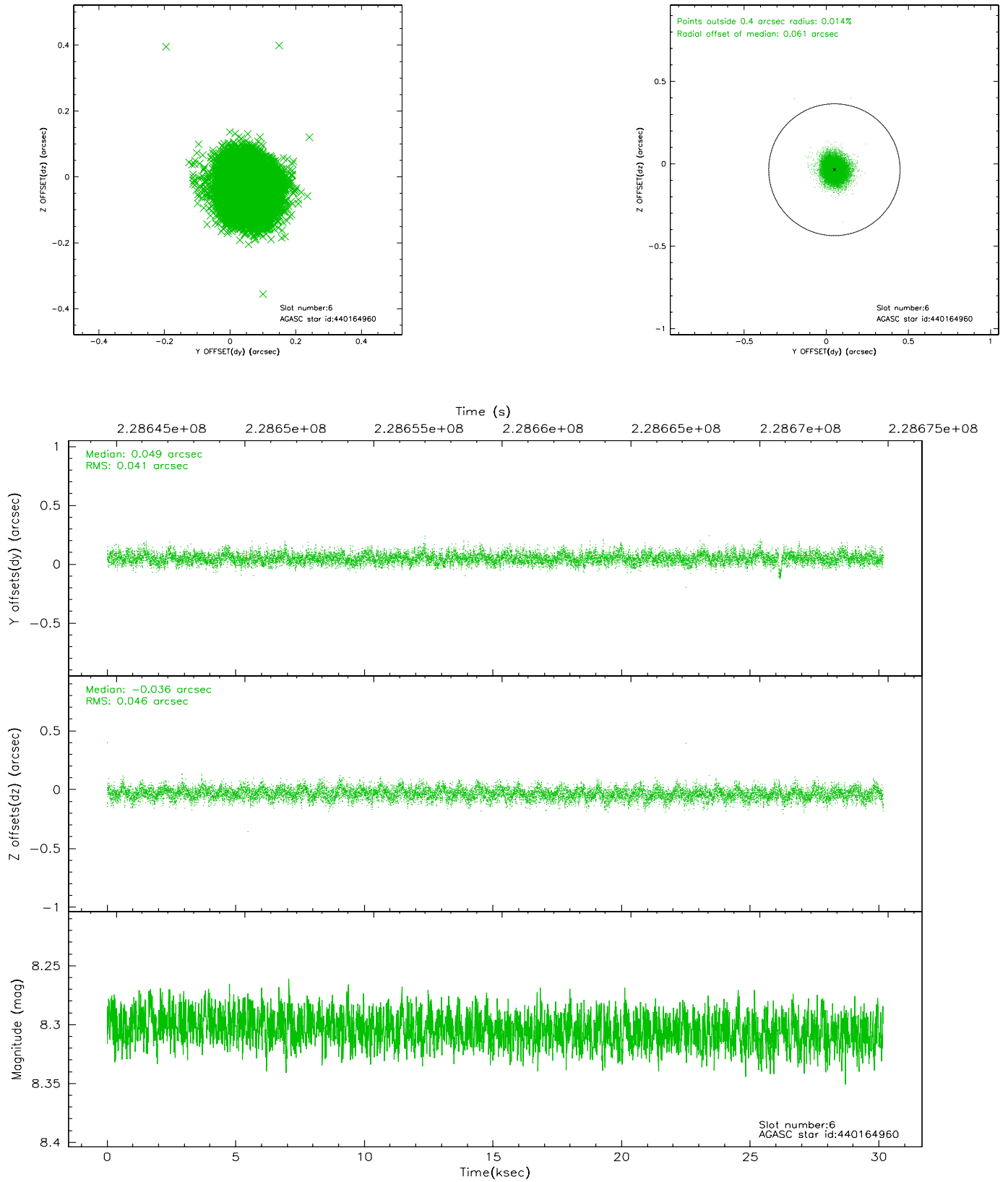
2.4.2 Slot 4



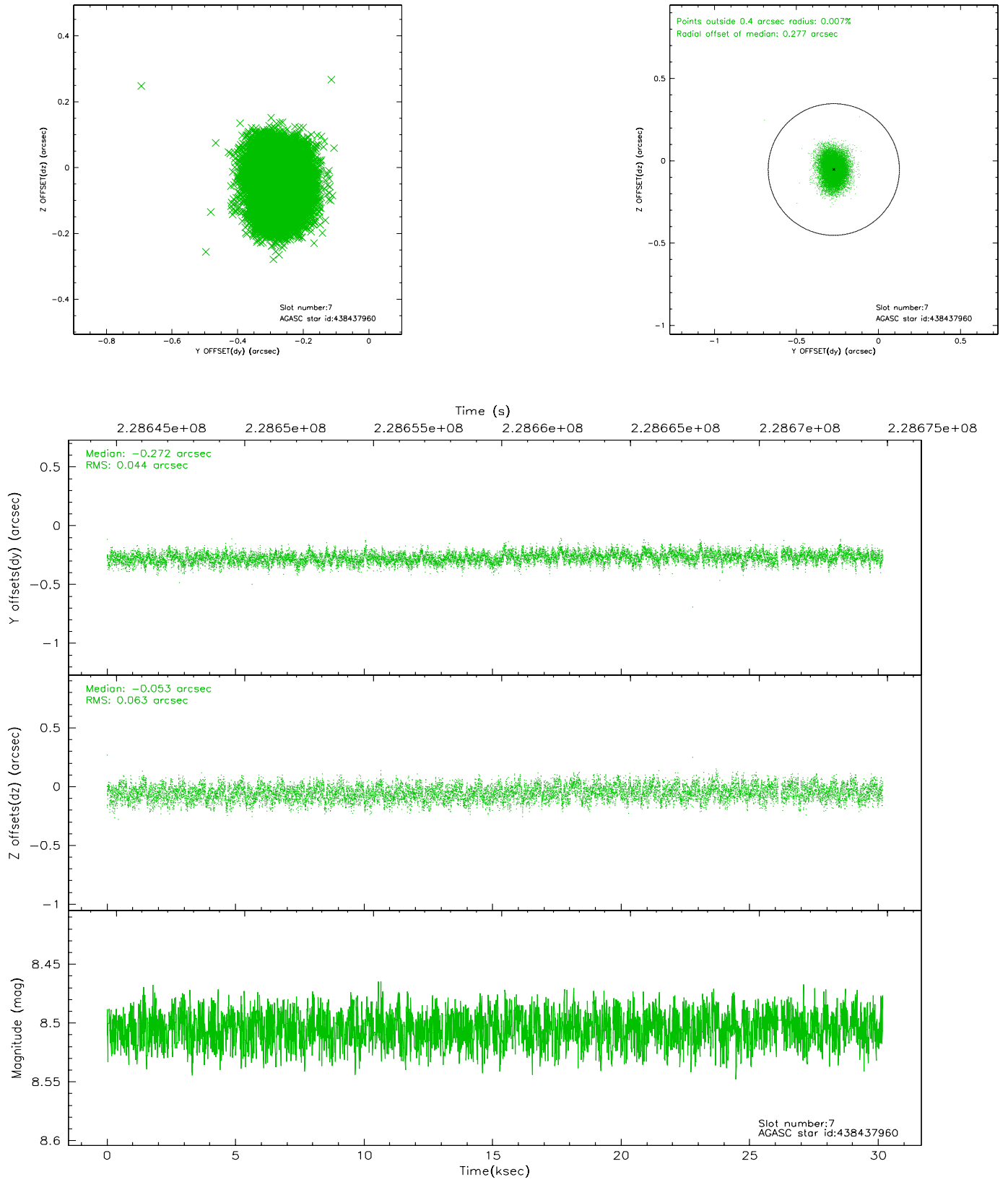
2.4.3 Slot 5



2.4.4 Slot 6

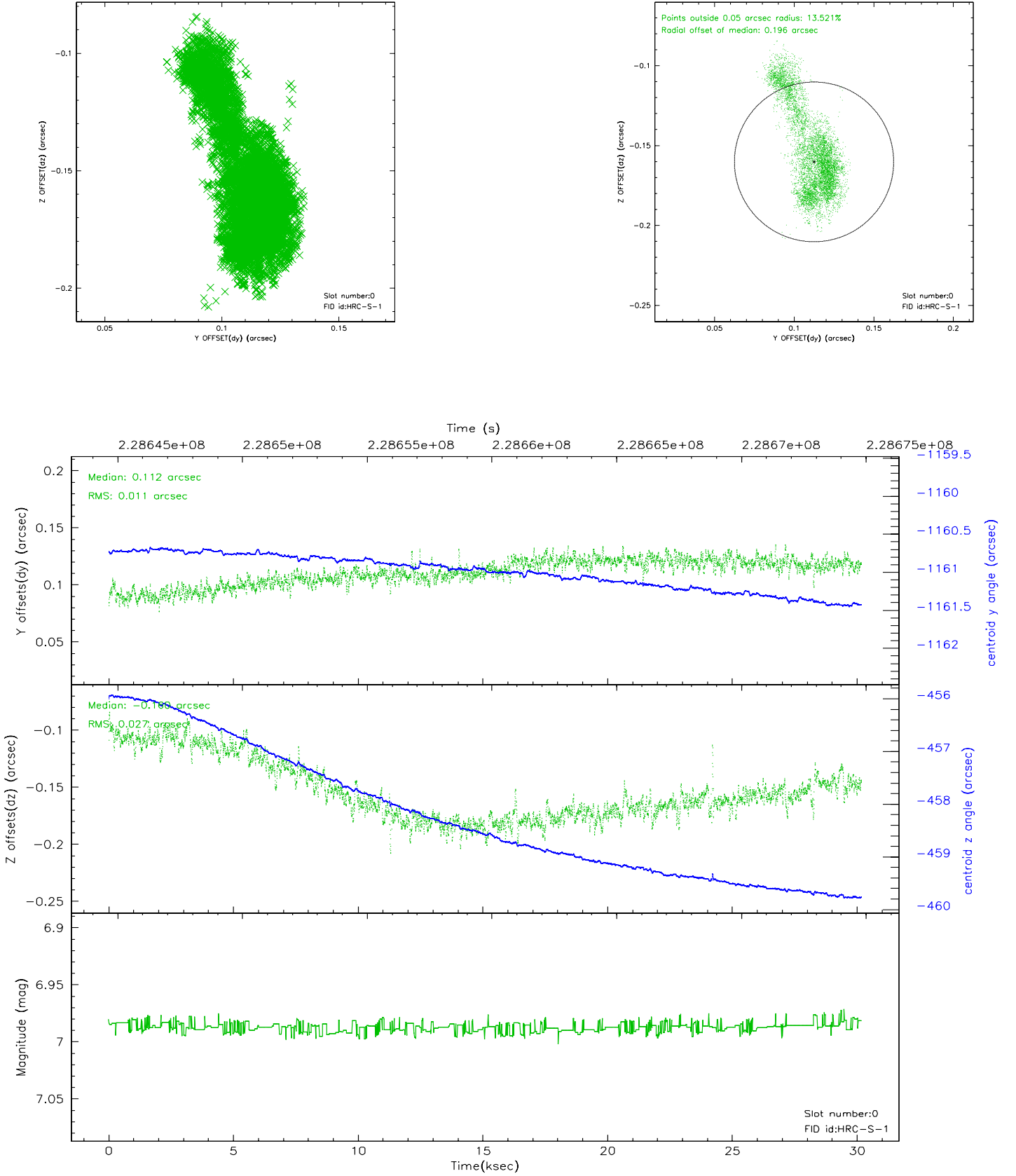


2.4.5 Slot 7

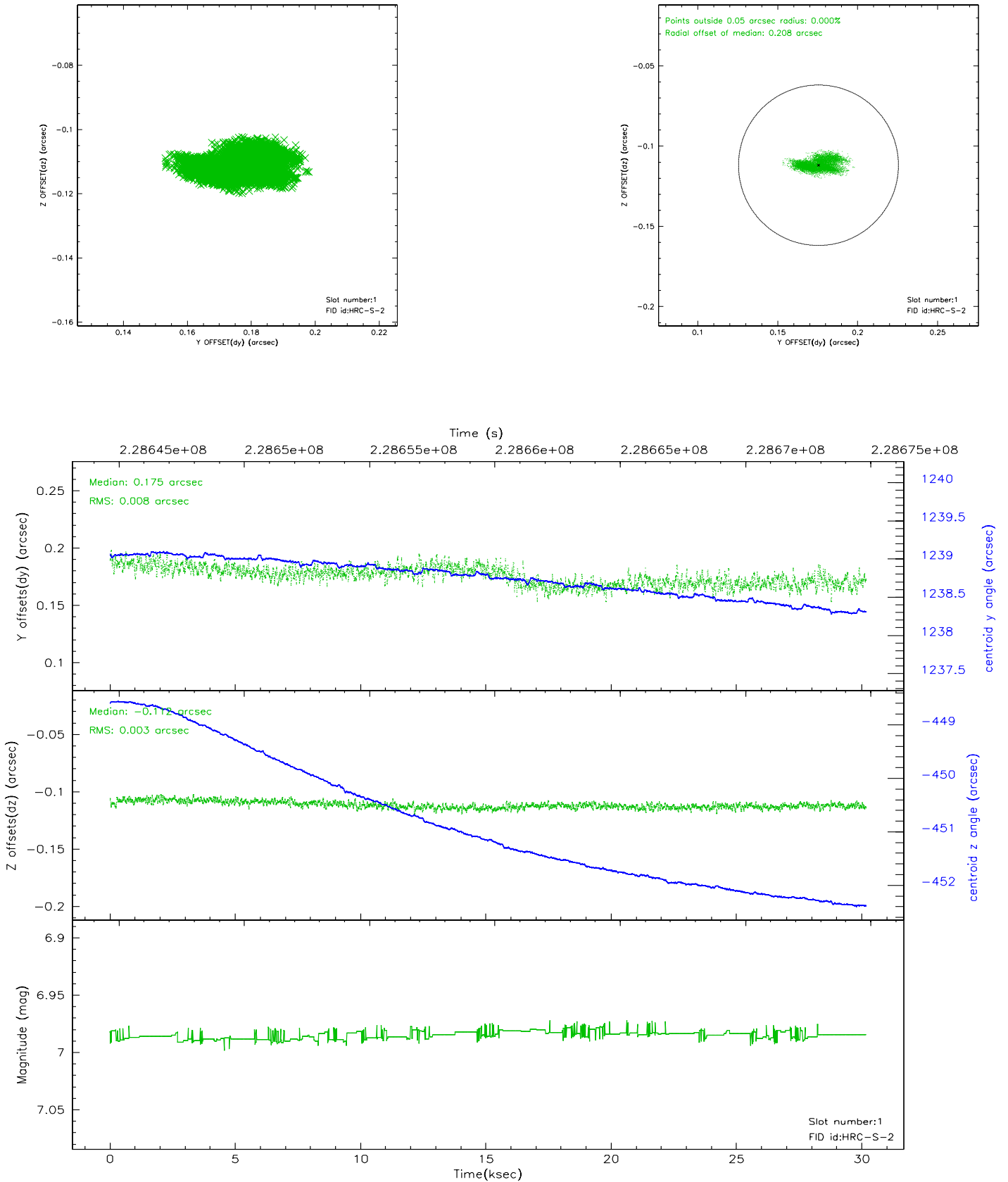


2.5 FID Slots

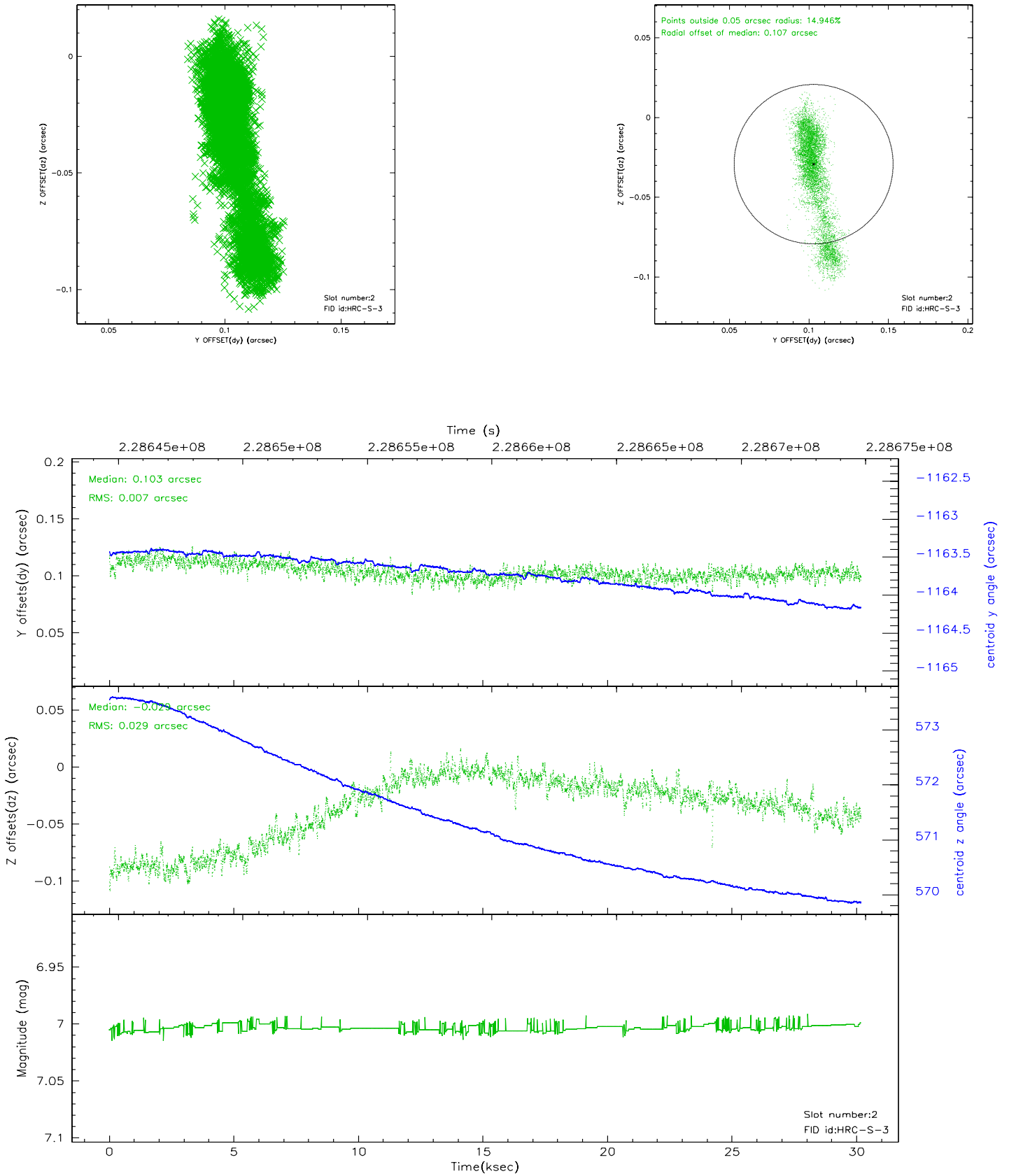
2.5.1 Slot 0



2.5.2 Slot 1

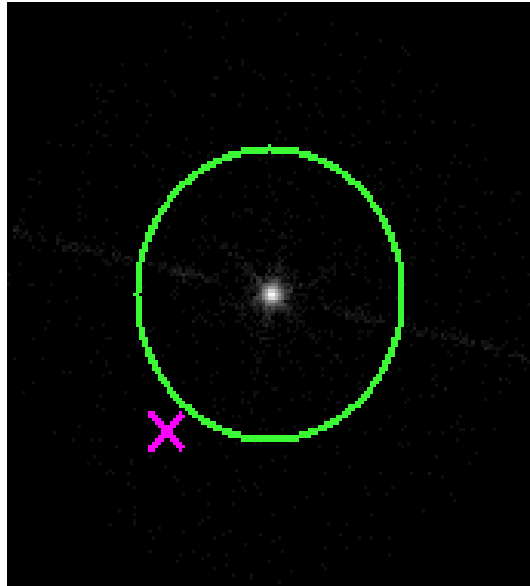


2.5.3 Slot 2



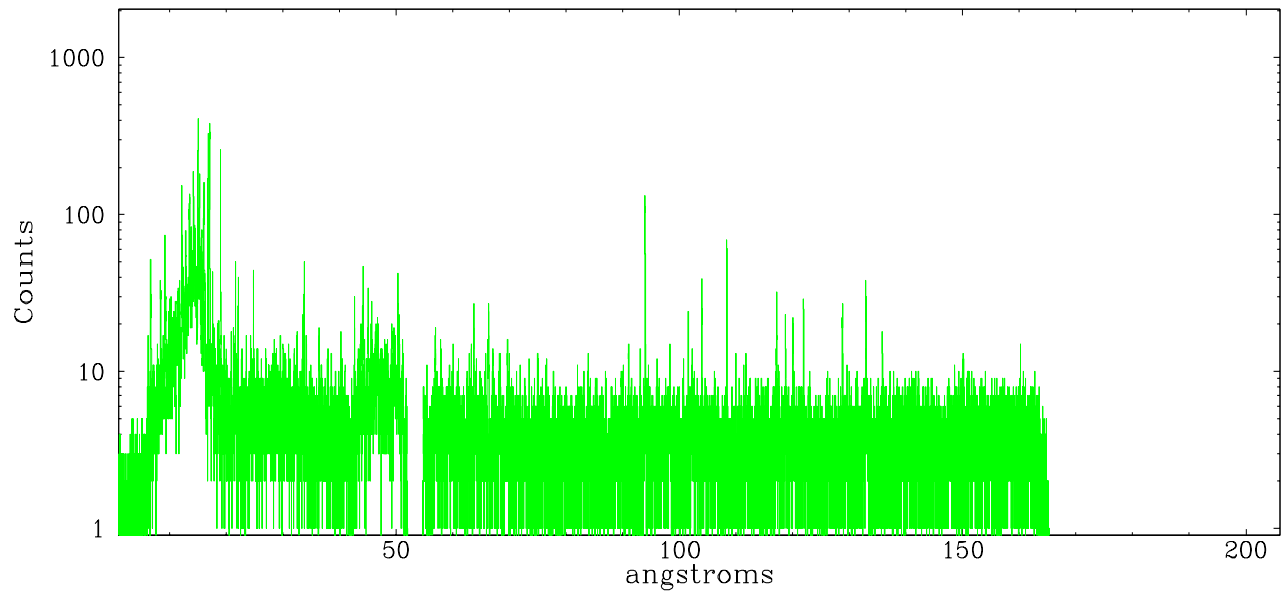
3 Gratings

3.1 LETG Arm

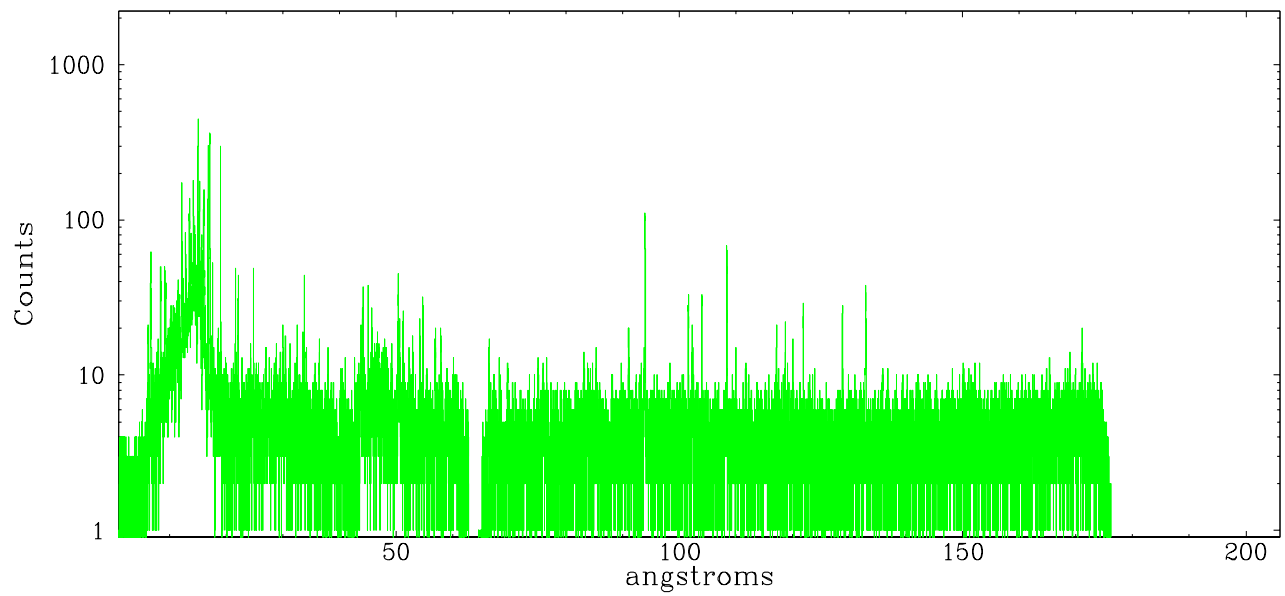


LETG Zero Order

leg order -1



leg order $+1$



A Summary

A.1 Status

V&V Scientist	Jen Lauer
V&V Date (YYYY-MM-DD)	2006.03.20
V&V Edition	1
V&V Disposition and Status	OK
V&V Charge Time	30.17318

A.2 Comments

Window constraint met.

Aspect review determined that large SIM dz drift is just a thermal issue.