

V&V Reference Report

L2 ASCDS Version : 7.6.7.1

Observation 59516 - L2 Version 002
Chandra X-Ray Center

L2 Processing Date : Mar 19 2006

Contents

1	Front	2
2	OBI	3
2.1	OBI	3
2.1.1	Images	3
2.1.2	Bias	3
2.1.3	Parameters	4
2.1.4	Events	4
2.2	Compared Parameters	5
2.3	Aspect	6
2.4	Star Slots	8
2.5	FID Slots	8
A	Summary	9
A.1	Status	9
A.2	Comments	9

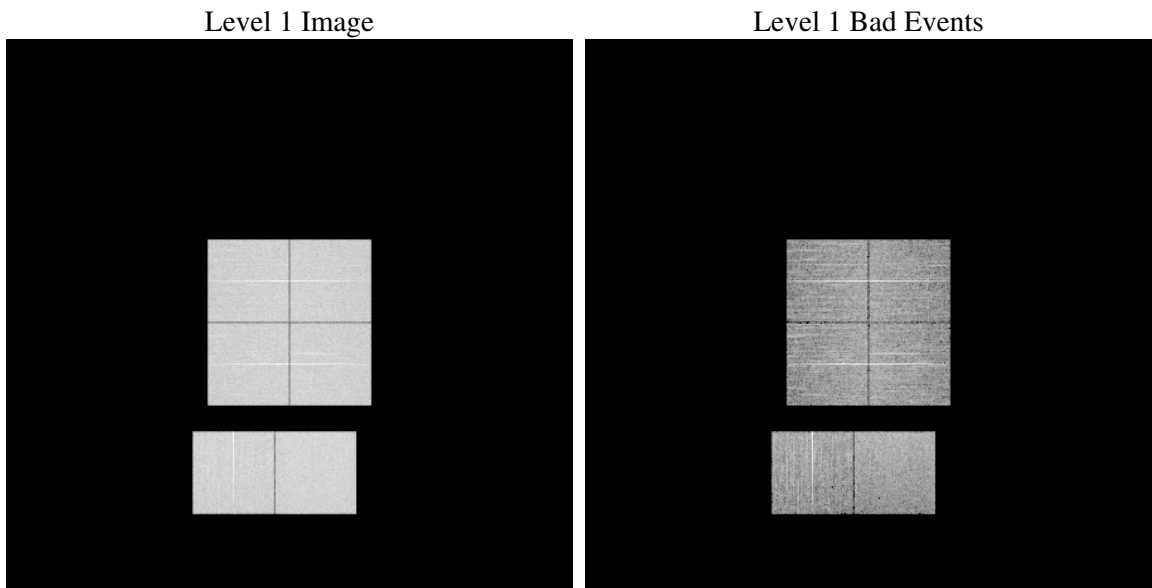
1 Front

seq_num	
obs_id	59516
title	ACIS-012367 diagnostics
observer	CHANDRA engineering request/realtime commanding
object	
dtcycle	0
cycle	P
ra_targ	0.0
dec_targ	0.0
ra_nom	348.98079116659
dec_nom	-16.977398923121
roll_nom	94.389827598127
revision	2
ontime	8198.3999694586
livetime	8094.5868925615
ontime0	8198.3999694586
ontime1	8198.3999694586
ontime2	8169.2311666608
ontime3	8130.2629106939
ontime6	8198.3999694586
ontime7	8198.3999694586
l2events	1068934

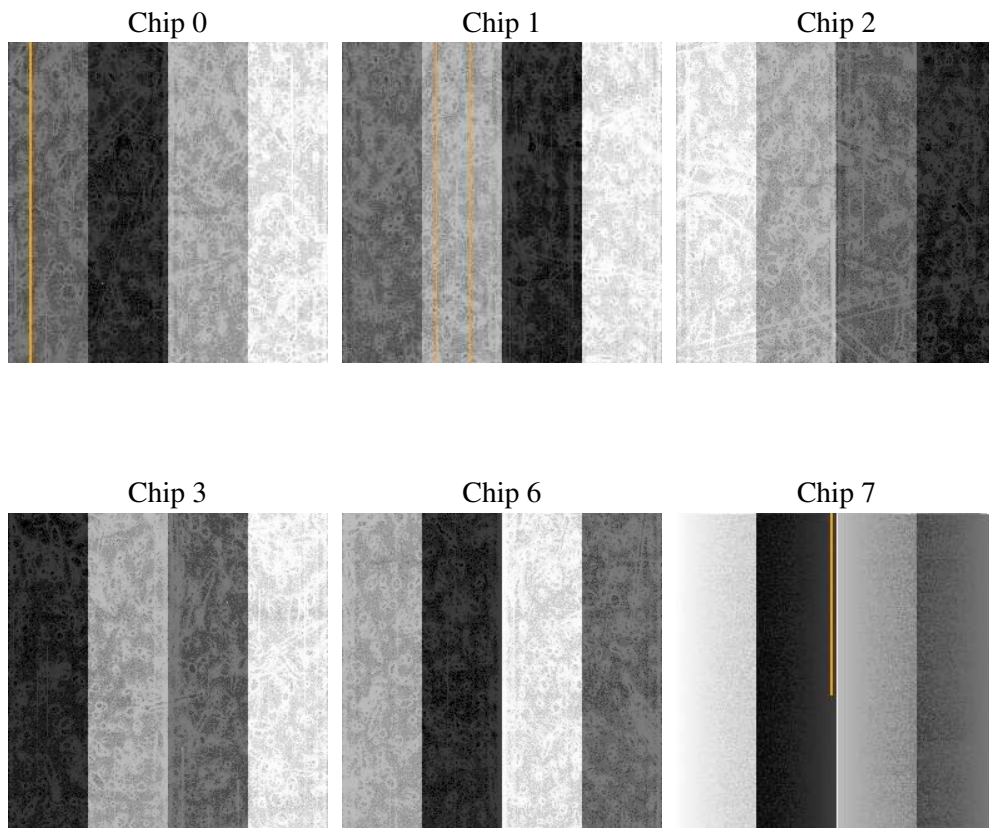
2 OBI

2.1 OBI

2.1.1 Images



2.1.2 Bias



2.1.3 Parameters

obi_num	1
ascdsver	7.6.7.1
caldbver	3.2.1
date	2006-03-19T14:13:58
revision	2

sched_exp_time	0.0
ontime	8284.0156193674
ontime0	8284.0156193674
ontime1	8284.0156193674
ontime2	8248.3648260832
ontime3	8212.7140130699
ontime6	8284.0156193674
ontime7	8284.0156193674
l1events	1480584

2.1.4 Events

	ccd 0	ccd 1	ccd 2	ccd 3	ccd 6	ccd 7
level 1 events	240510	239951	243885	245061	252056	259121
rejected events	57442	55779	59055	60121	60960	62483
rejected %	23%	23%	24%	24%	24%	24%

	ccd 0	ccd 1	ccd 2	ccd 3	ccd 6	ccd 7
grade 0 events	101948	100622	104959	105431	103590	29858
	42%	41%	43%	43%	41%	11%
grade 1 events	540	469	602	605	479	77
	0%	0%	0%	0%	0%	0%
grade 2 events	32253	34095	30632	31174	34911	62442
	13%	14%	12%	12%	13%	24%
grade 3 events	11964	11672	12254	12154	11738	12870
	4%	4%	5%	4%	4%	4%
grade 4 events	11698	11756	12293	12177	11677	12550
	4%	4%	5%	4%	4%	4%
grade 5 events	3307	3368	3260	3518	3500	6480
	1%	1%	1%	1%	1%	2%
grade 6 events	27141	27945	26478	25892	31186	80971
	11%	11%	10%	10%	12%	31%
grade 7 events	51659	50024	53407	54110	54975	53873
	21%	20%	21%	22%	21%	20%

2.2 Compared Parameters

Parameter	Planned	Actual	Parameter	Planned	Actual
Instrument	ACIS	ACIS	Obspar format version number	6	6
Detector	ACIS-012367	ACIS-012367	Obspar file type	PREDICTED	ACTUAL
Grating	NONE	NONE	Obspar update status	NONE	UPDATED
Data mode	FAINT	FAINT	On-chip summing requested	N	N
Observation mode	SECONDARY	SECONDARY	Subarray requested	NONE	NONE
Pointing RA	0	348.9807911665897	Alternating exposures requested	N	N
Pointing Dec	0	-16.97739892312104	Primary exposure time	3.2	3.2
Pointing Roll	0.0	94.38982759812737			
SIM focus pos (mm)	-0.782348	-0.7809083437167272			
SIM defocus (mm)	0	0.7524282956875696			
SIM translation stage pos (mm)	-233.592463	250.466033080201			
SIM translation stage offset (mm)	0	-0.01005468664627074			
Observation start time	239690846.890108	239690845.86511			
Observation start date	2005-08-06T04:47:27	2005-08-06T04:47:25			
Observation end time	239712870.041117	239712869.01612			
Observation end date	2005-08-06T10:54:30	2005-08-06T10:54:29			
Read mode	TIMED	TIMED			

2.3 Aspect

2.4 Star Slots

2.5 FID Slots

A Summary

A.1 Status

V&V Scientist	Doug Morgan
V&V Date (YYYY-MM-DD)	2006.03.20
V&V Edition	1
V&V Disposition and Status	OK
V&V Charge Time	8.19839996

A.2 Comments